

MaxJax™ Portable Mid-Rise Lift

Operation and Maintenance Manual

Manual P/N 5900268 — Manual Revision A — July 2021

Model:

- M6K



US Design Patent No. 8.256.577 B2
US Design Patent No. 9.150.395 B2

Designed and engineered by BendPak Inc. in Southern California, USA. Made in China.

 **DANGER**

Read the *entire contents* of this manual *before* using this product. Failure to follow the instructions and safety precautions in this manual can result in serious injury or death. Make sure all other operators also read this manual. Keep the manual near the product for future reference. *By proceeding with setup and operation, you agree that you fully understand the contents of this manual and assume full responsibility for product use.*

Manual. MaxJax™ Portable Mid-Rise Lift, *Installation and Operation Manual*, Manual Part Number 5900268, Manual Revision A, Released July 2021.

Copyright. Copyright © 2021 by BendPak Inc. All rights reserved. You may make copies of this document if you agree that: you will give full attribution to BendPak Inc., you will not make changes to the content, you do not gain any rights to this content, and you will not use the copies for commercial purposes.

Trademarks. MaxJax, the MaxJax logo, BendPak, and the BendPak logo are registered trademarks of BendPak Inc. All other company, product, and service names are used for identification only. All trademarks and registered trademarks mentioned in this manual are the property of their respective owners.

Limitations. Every effort has been made to ensure complete and accurate instructions are included in this manual. However, product updates, revisions, and/or changes may have occurred since this manual was published. BendPak reserves the right to change any information in this manual without incurring any obligation for equipment previously or subsequently sold. BendPak is not responsible for typographical errors in this manual. You can always find the latest version of the **Operation and Maintenance Manual for your product on the MaxJax website.**

Warranty. The MaxJax warranty is more than a commitment to you: it is also a commitment to the value of your new product. Contact your nearest BendPak dealer or visit www.maxjax.com/warranty for full warranty details.

Safety. Your product was designed and manufactured with safety in mind. However, your safety also depends on proper training and thoughtful operation. Do not install, operate, maintain, or repair the unit without reading and understanding this manual and the labels on the unit; **do not use your Lift unless you can do so safely!**

Owner Responsibility. In order to ensure operator safety and maintain your product properly, it is the responsibility of the product owner to read and follow these instructions:

- Follow all setup, operation, and maintenance instructions.
- Make sure product setup and use conforms to all applicable local, state, and federal codes, rules, and regulations, such as state and federal OSHA regulations and electrical codes.
- Read and follow all safety instructions. Keep them readily available for operators.
- Make sure all operators are properly trained, know how to safely operate the unit, and are properly supervised.
- Do not operate the product until you are certain all parts are in place and operating correctly.
- Carefully inspect the product on a regular basis and perform all maintenance as specified.
- Service and maintain the unit only with approved replacement parts.
- Keep all instructions permanently with the product and make sure all labels are clean and visible.
- **Only use the Lift if it can be used safely!**

Unit Information. Enter the Model Number, Serial Number, and the Date of Manufacture from the label on your unit. This information is required for part or warranty issues.

Model: _____

Serial: _____

Date of Manufacture: _____




MAXJAX		5240 Willis Rd. Mobile, AL 36682
Description		
Model No.	Lifting Capacity	
Date Code	Serial No.	
Voltage		
<input type="checkbox"/> 110-120V, 50-60 Hz, 1 Ph		
<input type="checkbox"/> 208-240V, 50-60 Hz, 1 Ph		
LPC		
Warranty void if this label is removed		
	DANGER! Disconnect Power Before Servicing	 
MADE IN CHINA	www.maxjaxusa.com	PN 5906036

Table of Contents

Introduction	3	Maintenance	12
Shipping Information	3	Troubleshooting	13
Safety Considerations	4	Labels	14
Specifications	6	Parts Drawings	16
Operation	7	ALI Store	19

Introduction

MaxJax is a portable Mid-Rise Lift with a small footprint designed for low-ceiling garages. MaxJax can raise Vehicles up to 6,000 lbs. (2,722 kg). ALI Certified and CE Approved.

This manual is mandatory reading for all MaxJax users, including anyone who sets up, operates, maintains, or repairs them. Keep this manual on or near the device so that anyone who uses or services it can read it.

⚠ DANGER Be very careful when setting up, operating, maintaining, or repairing this equipment; failure to do so could result in property damage, product damage, injury, or (in very rare cases) death. Make sure only authorized personnel operate this equipment. All repairs must be performed by an authorized technician. Do not make modifications to the unit; this voids the warranty and increases the chances of injury or property damage. Make sure to read and follow the instructions on the labels on the unit.

If you are having issues, refer to the **Troubleshooting** section of this manual for assistance.

Technical support and service is available from your dealer, on the Web at maxjax.com/support, by email at support@maxjax.com, or by phone at **(844) 629-5291**.

Shipping Information

Your equipment was carefully checked before shipping. Nevertheless, you should thoroughly inspect the shipment **before** you sign to acknowledge that you received it.


When you sign the bill of lading, it tells the carrier that the items on the invoice were received in good condition. ***Do not sign the bill of lading until after you have inspected the shipment.*** If any of the items listed on the bill of lading are missing or damaged, do not accept the shipment until the carrier makes a notation on the bill of lading that lists the missing and/or damaged goods.

If you discover missing or damaged goods **after** you receive the shipment and have signed the bill of lading, notify the carrier at once and request the carrier to make an inspection. If the carrier will not make an inspection, prepare a signed statement to the effect that you have notified the carrier (on a specific date) and that the carrier has failed to comply with your request.

It is difficult to collect for loss or damage after you have given the carrier a signed bill of lading. If this happens to you, file a claim with the carrier promptly. Support your claim with copies of the bill of lading, freight bill, invoice, and photographs. Our willingness to assist in helping you process your claim does not make us responsible for collection of claims or replacement of lost or damaged materials.

Safety Considerations

Read this manual carefully before using your new product. Do not set up or operate the product until you are familiar with all operating instructions and warnings. Do not allow anyone else to operate the product until they are also familiar with all operating instructions and warnings.

 **WARNING** **California Proposition 65:** This product contains chemicals known to the State of California to cause cancer and birth defects or other reproductive harm. For more information, visit www.p65warnings.ca.gov/.


General Safety Information


- The product is a Portable Mid-Rise Lift. **Use it only for its intended purpose.**
- Do not make any modifications to the Lift; this voids the warranty and increases the chances of injury or property damage.
- The product must only be operated by authorized personnel. Keep children and untrained personnel away from the Lift.
- MaxJax is portable, so you can move it around your workspace; however, when the Lift is in use, it **must** be anchored in place.
- Do not operate equipment with a damaged Power Cord or if the equipment has been dropped or damaged; do not use the equipment until it has been examined by a qualified service person.
- Make sure the Lift Controls are dry, clean, and free from grease and oil.
- Keep loads centered and balanced on the Lift.
- **Never** exceed the rated capacity of the Lift.
- Keep hair, loose clothing, fingers, and all parts of the body away from moving parts.
- Make sure all operators read and understand the *Operation and Maintenance Manual*. Keep the manual near the device at all times.
- Make a visual inspection of the product before using it. Check for damage or missing parts. Do not use the product if you find any issues. Instead, take it out of service, then contact your dealer, email support@maxjax.com, visit maxjax.com/support, or call **(844) 629-5291**.
- Make a thorough inspection at least once a year. Replace any damaged or severely worn parts, decals, or warning labels.

Symbols

Following are the symbols used in this manual:

 **DANGER** Calls attention to an immediate hazard that **will** result in injury or death.

 **WARNING** Calls attention to a hazard or unsafe practice that **could** result in injury or death.

 **CAUTION** Calls attention to a hazard or unsafe practice that could result in minor personal injury, product, or property damage.

NOTICE Calls attention to a situation that, if not avoided, could result in product or property damage.



Tip

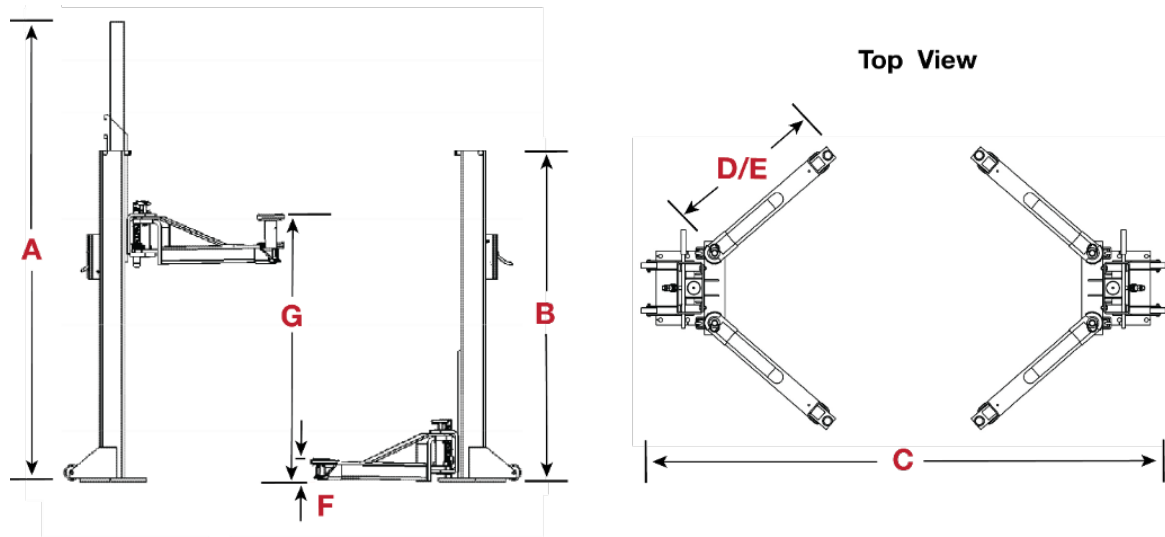
Calls attention to information that can help you use your product better.

Liability Information

BendPak Inc. assumes **no** liability for damages resulting from:

- Use of the product for purposes other than those described in this manual.
- Modifications to the equipment without prior, written permission from BendPak Inc.
- Injury or death caused by modifying, disabling, overriding, or removing safety features.
- Damage to the equipment from external influences.
- Incorrect operation of the equipment.

Specifications



Model	M6K
Lifting capacity	6,000 lbs. / 2,722 kg
Maximum capacity front axle	3,000 lbs. / 1,364 kg
Maximum capacity rear axle	3,000 lbs. / 1,364 kg
Max Load per Arm	1,500 lbs. / 682 kg
A Overall Height (Hydraulic Cylinders at full height)	89.5" / 2,273 mm
B Column Height	64" / 1,629 mm
C Typical Width (edge of Base Plates)	105" – 135" / 2,667 mm – 3,429 mm
D Arm Reach (min)	26" / 658 mm
E Arm Reach (max)	40" / 1,016 mm
F Maximum Lifting Height (with Pad)	47.25" / 1,204 mm
G Maximum Lifting Height (with Adapter)	50" / 1,270 mm
Minimum Pad Height	5.25" / 137 mm
Safety Locks	7
Post Weight	300 lbs. / 136 kg
Raising/Lowering Time*	45 seconds
Motor**	110/220 VAC, 50/60 Hz, 1 Ph

* Lowering is much slower with no Vehicle on the Lift.

** Must specify at time of purchase.

Specifications subject to change without notice.

Operation

This section describes how to operate your MaxJax.

⚠ DANGER Automotive Lifts are dangerous tools when used by inexperienced or impaired operators. When you even hear the words “Automotive Lift,” your brain should automatically remember that lifting a **Vehicle is a serious endeavor with life-threatening risks**. Focus on what you are doing.

Safety Considerations

⚠ WARNING Your safety is dependent on reading, understanding, and implementing these Safety Rules. **Do not skip over them—read them carefully and follow them; your life could literally depend on it!**

Do the following **before** you raise a Vehicle on your MaxJax, do the following each time:

- **Check the Lift.** Walk all the way around the Lift, checking for any missing, heavily worn, or damaged parts. Do not operate the Lift if you find any issues; instead, take it out of service, then contact your dealer, email support@maxjax.com, or call **(844) 629-5291**.
- **Check the area.** Keep the area around and under the Lift clean and free of obstructions; anything that could impact the raising or lowering of the Vehicle. Do not forget to check **above** the Lift. If you find an obstruction, move it out of the way. MaxJax is not intended for outdoor use and has an operating ambient temperature range of 41°–104°F (5° – 40°).
- **Check the operators.** Make sure everyone who is going to operate the Lift has been trained in its use, has read the labels on the unit, and has read the manual. Only the operator at the Controls should be within 30 feet of the Lift while it is moving. Do not allow children to operate the Lift. Do not allow anyone under the influence of drugs, alcohol, or medication to operate the Lift. Do not allow any unauthorized personnel to operate the Lift.
- **Check for safety.** Make sure everyone who is going to be walking near the Lift is aware of its presence and takes appropriate safety measures. Only put Vehicles on the Lift. When raising a Vehicle, do not leave it until it is **engaged** on a Safety Lock. When lowering the Lift, do not leave it until it is on the ground.
- **Check the Vehicle.** Never exceed the Lift’s weight rating. Do not allow people inside a Vehicle you are going to raise. Make sure the Vehicle is not overbalanced on either end or either side. You must use the factory-recommended Lifting Points for the Vehicle. Never raise just one side, one corner, or one end of a Vehicle.

Additional Operating Information

Keep the following in mind when operating your MaxJax:

- Use it only on a hard, flat surface. MaxJax is portable; if you move it to a new location, make sure the location has a hard, flat surface.
- Always verify that you have the proper overhead clearance.
- **Visually inspect the Lift before each use.** Do not use it if you find any damage or severe wear to the Lift components.
- Both Posts **must** be anchored in place when the Lift is in operation.
- Make sure the Anchor Bolts are securely tightened before each use; if any Anchor Bolts are loose, do not use the Lift until all Anchor Bolts are adjusted.
- Do not block, open, or override self-closing Lift Controls; they are designed to return to the “Off” or Neutral position when released.
- Always remain clear of the Lift when raising or lowering Vehicles.
- Do not attempt to lift a Vehicle in any way with less than all four Lift Arms.
- Do not remove or disable the Lift Arm Restraints.
- Do not rock the Vehicle or remove heavy components while on the Lift; removal of Vehicle components may alter the weight distribution.
- Do **not** begin working on the Vehicle until you have confirmed that both Safety Locks are securely engaged on a Lock position.
- Never go under a raised Vehicle without first confirming that both Safety Locks are secured on a locking position of the same height.
- Always remove tools, trays, and all other equipment before lowering the Lift.
- Never drive over the Lift Arms; make sure to move the Lift Arms to provide an unobstructed exit before moving the Vehicle from the Lift area.

Hydraulic System Warnings

 **WARNING** Failure to observe these precautions can result in serious personal injury, including, in rare cases, death.

- All Quick-Connect/Disconnect Hose ends must be inspected before any attempt is made to raise a Vehicle.
- All Hydraulic Hose connections must be correctly fastened together before using your MaxJax or applying pressure.
- Do not attempt to connect or disconnect Hydraulic Hoses while equipment is loaded or while the Hydraulic System is under pressure.
- Keep the Hydraulic System clean; keep the Quick-Connect Fittings free of debris.
- Keep bare hands away from Hydraulic Fluid; always wear gloves when handling Hydraulic Cylinders or Hydraulic Hoses.
- Before Lift operation, always check that any unused Cylinder Ports are plugged and securely tightened.
- When dealing with Hydraulic Fluid, observe the safety instructions from the manufacturer.

Raising a Vehicle

1. Check the items listed in **Safety Considerations**.
2. Make sure the Lift is fully lowered and the Lift Arms are out of the way.
3. Drive the Vehicle into the Lift and then stop.
4. Put the Vehicle in park, put on the parking brake, and turn off the Vehicle.
If the Vehicle is a manual transmission, put it into first gear before turning off the motor.
5. Position the Lifting Arms on the manufacturer's recommended Lifting Points of the Vehicle.

⚠ WARNING Do not 'eyeball' the best location for the Adapters. **You must use the manufacturer's recommended Lifting Points.** If you do not, the Vehicle could become unstable and fall, which could damage the Vehicle, damage the Lift, or injure or even kill anyone under the Vehicle.

6. Put the Lift Pads under the Vehicle so that they are **directly under** the Lifting Points for the Vehicle you are raising.
7. Press and hold the **Up** Button on the Power Unit to raise the Lift until **just before** the Adapters make contact with the Lifting Points, then release the **Up** Button.
8. Check the Arm Restraint Gears on all four Lift Arms to make sure they are engaged and that they will make solid contact with the Lifting Points when raised further.
9. Press the **Up** Button until the Tires of the Vehicle are a few inches off the ground.
If the Lift becomes unstable or the Vehicle starts moving, release the **Up** Button immediately.
10. Check to make sure the Lift Arms are making solid contact with the Lifting Points.
If any of the Lift Pads are **not** making solid contact with the Lifting Points, lower the Lift and adjust the Lift Pads so that they make better contact.
11. Rock the Vehicle to make sure the Vehicle is stable and balanced.

⚠ DANGER Do **not** raise the Lift further until you are certain the Vehicle on the Lift is both stable and balanced. If the Vehicle is **not** stable and balanced, it could fall, which could damage the Vehicle, damage the Lift, or injure or kill anyone under the Vehicle.

12. Raise the Lift until the Vehicle reaches the desired height, go up a bit further, then release the **Up** Button.
13. Press and hold the Lowering Handle briefly to move the Lift back down, which engages it on the most recently passed Safety Lock.
If you miss the desired Safety Lock, press and hold the **Up** Button again and go just past the desired Safety Lock. Release the **Up** Button, then hold the Lowering Handle again to lower the Lift onto the desired Safety Lock.

⚠ DANGER Do **not** go under the Vehicle until you have confirmed that the Lift is engaged on Safety Locks at the same height.

14. Begin work on the Vehicle.

Lowering a Vehicle

1. Check under and around the Vehicle to make sure the area is clear of all obstructions.
2. Press and hold the **Up** Button on the Power Unit for a few seconds.
3. On each Post, move the Release Cam to the disengaged position.
4. **Press** and *hold* the Lowering Handle on the Power Unit.

 **WARNING** Stay clear of the Lift as it comes down; obey the pinch points warning decals.

5. When the Lift is fully lowered, release the Lowering Handle.
6. Push the Lift Arms in towards the Frame.
This is so they are not in the way when the Vehicle is moved.
7. Carefully drive the Vehicle out of the Lift.

Moving the Lift


MaxJax is portable, which means you can move it around your work space.

To move the Lift:

1. Make sure the Lift is fully lowered and the Lift Arms have been removed.

 **WARNING** Do not connect or disconnect the Hoses with the Lift in an elevated position.

2. Press and hold the Lowering Handle for a few seconds to relieve any hydraulic pressure in the Hydraulic Hoses.
3. Unplug the Power Cord and wrap it around the Portable Stand.

 **DANGER** Do *not* perform any maintenance or reinstallation without first making sure that the Lift is **completely disconnected from the power source** and cannot be re-energized until all maintenance tasks are complete.

4. Put a clean rag under the hydraulic connections near the bottom of the Hydraulic Cylinder, then disconnect the Hydraulic Hose.

Make sure to clean any Hydraulic Fluid from the Hydraulic Hoses.

5. Loosen the five Anchor Bolts from the Base Plate; keep the Bolts handy for future use.

 **CAUTION** Be careful not to disturb the Post until you are ready to move it to your storage area.



Tip

We recommend that you mark or otherwise note the Shim locations used at each Anchor to help at the time of re-installation.


6. Insert an Anchor Plug (P/N 5530412) in each Anchor Sleeve in the ground, to prevent the Anchor Sleeves from filling with debris while the Posts are in storage.
7. Using a downward force, push the Post to raise it by the Wheels, and then carefully move the Post to the desired location.
8. Repeat Steps 4 through 7 for the other Post.

Re-installation


When you are ready, you can easily re-install your MaxJax using the Anchor Sleeves already in place.

To re-install your Lift:

1. Verify the installation area is clear of debris, tools, and equipment.
2. Clean the Anchor holes with compressed air or with a nylon brush.


 **WARNING** You must wear OSHA-approved (publication 3151) personal protective equipment at all times when installing, using, maintaining, or repairing the Lift: safety glasses, leather gloves, steel-toed boots, back belts, and hearing protection.

3. Make a visual inspection of all the Drop-in Anchors for damage or extreme wear.


 **WARNING** You must inspect all Drop-in Anchors for proper setting and or damage **each time the Lift is re-installed**. Do **not** use the Lift if the Drop-in Anchors are damaged, extremely worn, or if the Concrete is cracked or defective.

4. Align the Posts with the Anchor locations.
5. Make sure the Lift is level; install any needed Shims under the Base Plates.
6. Tighten all the Anchor Bolts in place.

Important: Do **not** use an impact wrench to tighten the Anchor Bolts.


 **DANGER** The Lift must be re-leveled, shimmed, and bled each time the Lift is re-installed. Failure to do so may result in damage to the Lift or serious injury.

Maintenance

 **DANGER** Before performing maintenance on your Lift, make sure it is disconnected from power. The Lift uses electrical energy; if your organization has Lockout/Tagout policies, make sure to implement them before performing any maintenance. If you come into contact with high voltage/current, you could be injured or killed.

To maintain your Lift:

- **Daily:** Keep the Lift clean. Wipe up any oil spills, clean any dirt.
- **Daily:** Make a visual inspection of all moving parts and check for damage or excessive wear. If you find any damaged or worn parts, take the Lift out of service until they are replaced.
- **Daily:** Make sure the Safety Locks are in good operating condition. If you find that the Safety Locks are damaged or excessively worn, take the Lift out of service until they are replaced. ***Do not use your Lift if the Safety Locks are damaged or excessively worn.***
- **Weekly:** Check all controls to make sure they are functioning normally.
- **Weekly:** Check all labels on the unit. Replace them if they are illegible or missing.
- **Monthly:** Lubricate the Posts. We recommend using white lithium grease or similar.
- **Monthly:** Make sure all pivot arm pins are properly secured.
- **Monthly:** Check the Power Unit's Hydraulic Fluid levels. Refill if low.

 **WARNING** Do not operate your Lift if you find maintenance issues; instead, take it out of service, then contact your dealer, email support@maxjax.com, visit maxjax.com/support, or call **(844) 629-5291**.

Troubleshooting

Note: If your Lift is not functioning correctly, you must take it out of service until it is fixed.

Important: All repair work **must** be done by qualified personnel.

⚠ WARNING The Lift uses electrical energy; if your organization has Lockout/Tagout policies, make sure to implement them before performing any Troubleshooting.

Issue	Action to Take
Lift does not go up or down.	Make sure there is sufficient Hydraulic Fluid in the Reservoir. Make sure the Power Unit is connected to an appropriate power source. Make sure there is no air in the Hydraulic System. Make sure none of the Hydraulic Hoses are pinched or leaking. If the Hydraulic Fluid is dirty, replace it with clean Fluid.
Arms move erratically or squeaks when in use.	Move the Arms up and down a few times, with a break between each; there could be residual air in the Hydraulic System.
Lift does not stay up.	Make sure to leave the Lift engaged on its Safety Locks. Check for Hydraulic Fluid leaks.
Vehicle on the Lift is not level.	Make sure Lift is engaged on Safety Locks at the same height. Make sure the Safety Locks in both Posts are engaged. If the Lift is not on a Safety Lock, carefully lower the Vehicle back down to the ground and raise it again.
Motor is not running.	Check connection to power source; make sure it is plugged in and the appropriate voltage. Check wiring diagram.
Lift make odd noises when in use.	Lubricate the Slide Blocks and hinge points using white lithium grease.

If you continue to have problems with your Lift, take the Lift out of service, then contact your dealer, visit maxjax.com/support, via email support@maxjax.com, or call **(844) 629-5291**.

Labels



WARNING

Safety in **LOCKED** Position Safety **NOT** Locked Safety Lock **DISENGAGED** (To Lower)

■ Safety Lock □ Release Cam ■ Safety Lock Blocks

ENGAGE SAFETY LOCKS

ALWAYS make sure the lift is lowered onto the safety locks and fully engaged before working on or near the vehicle. Failure to do so may result in **SERIOUS INJURY OR DEATH.**

IMPORTANT

OPERATION / MAINTENANCE - PLEASE READ

DANGER

DO NOT use the lift if the arm pads are more than 3 degrees or 1.5 inches out of level from side to side. If the lift is not raising or lowering evenly, **STOP USE IMMEDIATELY. FAILURE TO FOLLOW THESE INSTRUCTIONS CAN LEAD TO SERIOUS INJURY OR DEATH.**

CYLINDER BLEEDING INSTRUCTIONS

ALWAYS follow the bleeding procedure before using your lift for the first time and every five afterwards.

- Perform the following bleeding procedure with no weight on the lift.
- The lift should be fully lowered before proceeding.
- Carefully check around and under the lift for any obstructions. Clear obstructions before beginning the bleeding procedure.
- Connect the hydraulic hoses and make sure fluid reservoir is full. Refer to the manual for complete instructions, if necessary.
- Loosen, but do not remove the bleeder screws on the top of each hydraulic cylinder using a hex wrench.
- With no weight on the lift, raise the lift to maximum height and observe the bleeder screws looking for air bubbles or oil escaping as the lift is rising. Air will continue to exit from the loosened bleeder screws.
- After the lift reaches maximum height, keep pressing the **UP BUTTON** for three seconds only.
- Immediately return to the cylinders and re-tighten both bleeder screws.
- Lower the lift back down to the ground.
- Repeat this procedure until you have purged the air out and the lift maintains level lifting and lowering.
- If you require further assistance please contact the MaxJax service team at 1-866-963-5655.

LIFT OPERATION

TO RAISE LIFT

- Read Operating and Safety manuals before using lift.
- Always lift vehicle according to manufacturer's recommended lift points.
- Position vehicle between columns. Adjust swing arms so that vehicle is positioned with the center of gravity in dray between cars.
- Position lift contact pads at manufacturer's recommended lifting points.
- Use truck adapters as needed. Never exceed 6" of pad/adapted height.
- As lift is being raised, **RAISE BUTTON** on power unit until contact pads make contact with the underside of the vehicle.
- Check to make sure vehicle is secure.
- As set vehicle to desired working height, then press power unit **LOWERING HANDLE** until lift carriage rest onto nearest safety lock position.
- Maintain visual contact with vehicle and surrounding area at all times while raising lift.
- STOP IMMEDIATELY** if load shifts or becomes unlevel.
- Always ensure safety locks are engaged before any attempt is made to work on or near vehicle.
- Always ensure lift contact pads are making full contact with vehicle before any attempt is made to work on or near vehicle.

TO LOWER LIFT

- As set lift by pressing **RAISE BUTTON** on power unit. Extend lift at least two inches to allow adequate clearance to the pads to clear.
- Clear safety locks on both columns by lifting both **SAFETY LOCK RELEASE HANDLES** upward.
- Be sure tool trays, stands or personnel are removed from under vehicle.
- Lower vehicle by pressing power unit **LOWERING HANDLE** until lift has descended completely.
- Maintain visual contact with vehicle and surrounding area at all times while lowering lift.
- STOP IMMEDIATELY** if load shifts or becomes unlevel.
- After it is moving vehicle 12" or less, position lift arms to provide unobstructed exit.
- NEVER** on or over lift arms.

REQUIRED MONTHLY MAINTENANCE

- ALWAYS on lift operation manual for factory recommended maintenance.
- Check air restrictions for proper operation.
- Visually inspect all motor parts, belts, pins, hoses and fittings, and anchors.
- Visually inspect safety locks for proper operation.
- Visually inspect concrete floor. **DO NOT USE LIFT** if concrete foundation shows signs of deterioration.
- Inspect all anchor bolts and tighten if necessary.
- Check columns for square, plumb positioning.
- Inspect all arm pivot pins, making sure they are properly secured.
- Inspect all lift pads, rag or if necessary.
- Lift is equipped with overhead cut-off switch, check for proper operation.

WARNING

- WARNING:** If constant anchor bolts are loose or any component of the lift is found to be defective.
- DO NOT USE LIFT:**
- Never operate the lift with any person or equipment on it.
- Never exceed rated capacity.
- Never lift any vehicle in any manner with **FEWER** than 4) arms. Rated capacity on each lift arm is no greater than 1/4 of the overall lifting capacity.
- Always ensure safety locks are engaged before any attempt is made to work on or near vehicle.
- Never lower lift in an elevated position unless the safety locks are engaged.
- Do not permit electric motor to get wet! Motor damage caused by dampness is not covered under warranty.

WARNING

USE PROPER ADAPTERS

Do not attempt to lift trucks or other frame type vehicles with standard rubber contact pads. **NEVER** lift with missing or damaged rubber contact pads. **ALWAYS REPLACE** rubber contact pads when worn or damaged. Contact BendPak or your BendPak dealer for product information.

FRAME CRADLE ADAPTERS
SKU# 521574
(Set of 4)

Required for use when lifting trucks, vans or other frame vehicles that require additional stability.

SUV & VAN ADAPTERS

56 mm SKU# 521570 63 mm SKU# 521571 125 mm SKM 521572

Recommended for trucks, SUVs and vans that require additional lifting height.

TO PLACE ORDER

Visit www.maxjaxusa.com
or dial 1-866-963-5655

ATTENTION

MAXIMUM LIFTING CAPACITY
CAPACITÉ DE LEVAGE MAXIMUM

6000 Lbs.
2722 Kg.

CERTIFIED AUTOMOTIVE LIFT

ALI CERTIFIED

To the provisions of **ANSI/ALCTV-2017** SAFETY REQUIREMENTS FOR CONSTRUCTION, TESTING AND VALIDATION

Automotive Lift Institute, Inc. | Corland, NY 13045

MET LISTED
Conforms to **ANSI/UL 201** SAFETY STANDARDS FOR GARAGE EQUIPMENT

Certified to
CAN/CSA C22.2 NO.68 MOTOR OPERATED APPLIANCES (HOUSEHOLD & COMMERCIAL)

ALI MET LISTED

MET Laboratories, Inc. | 5411 McNeil, MO 21202

Certification Label Serial Number

AL00617000M

MAXJAX 5240 Willis Rd
Mobile, AL 36682

Description

Model No.	Lifting Capacity
Date Code	Serial No.
Voltage	UPC
<input type="checkbox"/> 110-120V, 50-60 Hz, 1 Ph	
<input type="checkbox"/> 208-240V, 50-60 Hz, 1 Ph	

DANGER! Disconnect Power Before Servicing

CE ENEC

MADE IN CHINA www.maxjaxusa.com P/N 5900268

NOTICE

If attachments, accessories, or configuration modifying components used on this lift are located in the load path and affect operation of the lift, affect the lift electrical listing, or affect intended vehicle accommodation; and if they are not certified for use on this lift, then the certification of this lift shall become null and void. Contact the participant for information pertaining to certified attachments, accessories, or configuration modifying components.

www.autolift.org ©2011 by ALI, Inc. ALI/WLSIA01

H

NOTICE	NOTICE
Read operating and safety manuals before using lift.	Proper maintenance and inspection is necessary for safe operation.
NOTICE	
Do not operate a damaged lift.	

The messages and photographs shown are generic in nature and are meant to generally represent hazards common to all automotive lifts regardless of specific style.

Funding for the development and validation of these labels was provided by the Automotive Lift Institute, PO Box 33116 Indialantic, FL 32903.

They are protected by copyright. Set of labels may be obtained from ALI or its member companies.

© 1993 by ALI, Inc. ALI/ML1974

CAUTION	CAUTION
Lift to be used by trained operator only.	Authorized personnel only in lift area.
CAUTION	CAUTION
Use vehicle manufacturer's lift points.	Always use safety stands when removing or installing heavy components.
CAUTION	CAUTION
Use height extenders when necessary to ensure good contact.	Auxiliary adapters may reduce load capacity.

The messages and photographs shown are generic in nature and are meant to generally represent hazards common to all automotive lifts regardless of specific style.

Funding for the development and validation of these labels was provided by the Automotive Lift Institute, PO Box 33116 Indialantic, FL 32903.

They are protected by copyright. Set of labels may be obtained from ALI or its member companies.

© 1993 by ALI, Inc. ALI/ML1974

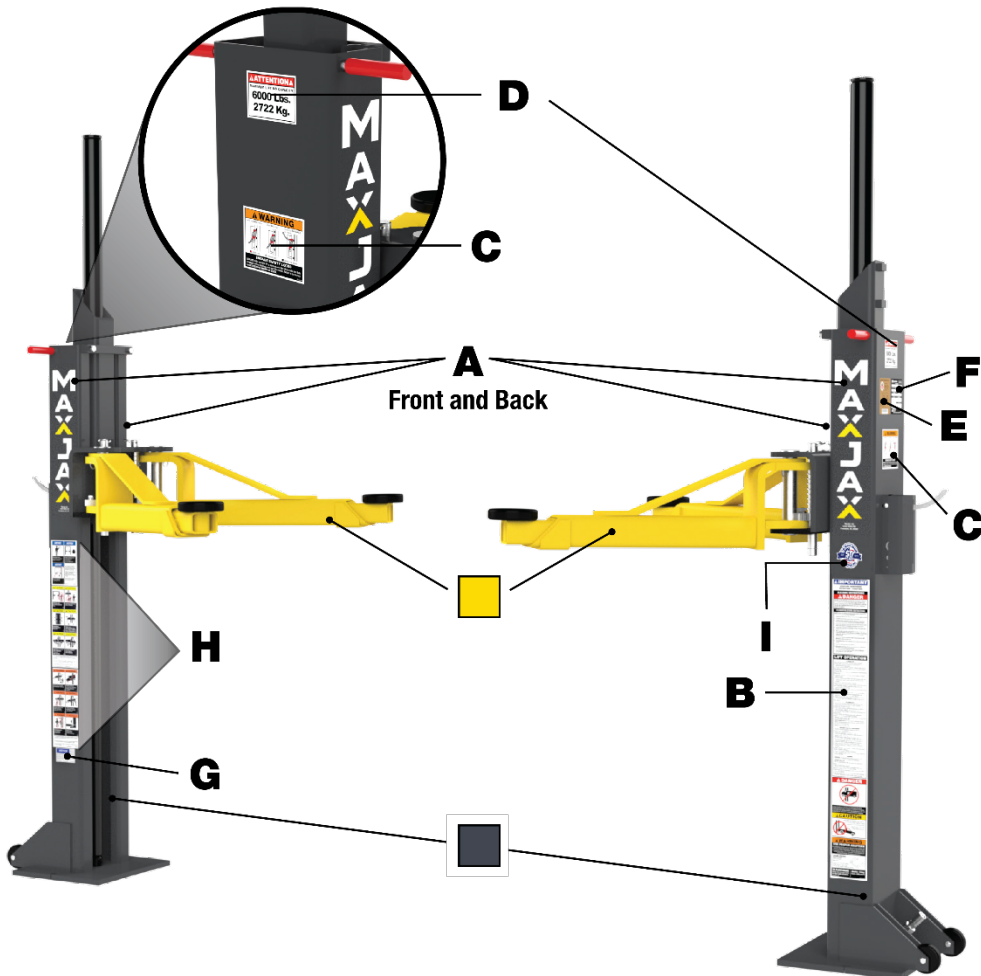
WARNING	WARNING
Clear area if vehicle is in danger of falling.	Position vehicle with center of gravity midway between adapters.
WARNING	WARNING
Remain clear of lift when raising or lowering vehicle.	Avoid excessive rocking of vehicle while on lift.
WARNING	WARNING
Do not override self-closing lift controls.	Keep feet clear of lift while lowering.

The messages and photographs shown are generic in nature and are meant to generally represent hazards common to all automotive lifts regardless of specific style.

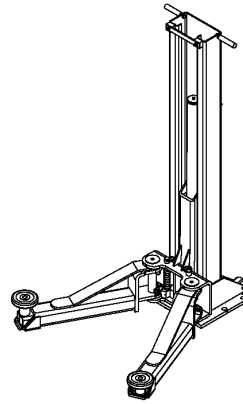
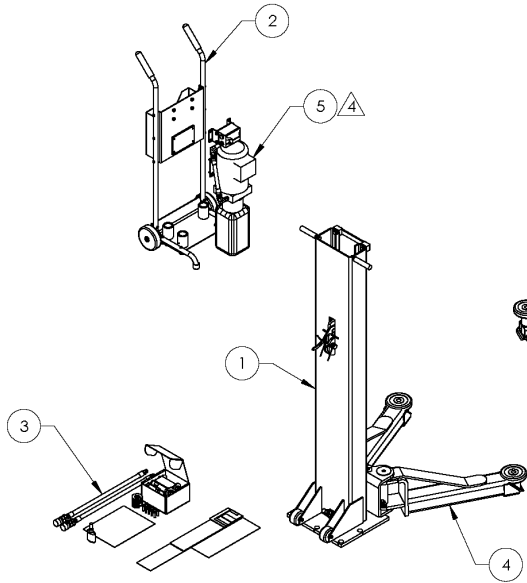
Funding for the development and validation of these labels was provided by the Automotive Lift Institute, PO Box 33116 Indialantic, FL 32903.

They are protected by copyright. Set of labels may be obtained from ALI or its member companies.

© 1993 by ALI, Inc. ALI/ML1974



Parts Drawings



ITEM NO	PART NUMBER	DESCRIPTION	QTY	REV
1	5215935	M6K POST ASSEMBLY	2	D
2	5215936	MAX JAX POWER UNIT STAND ASSEMBLY	1	B
3	5250293	M6K PARTS BOX	1	E
4	5215938	MAXJAX ARM ASSEMBLY	4	A
5	REF	M6K POWER UNIT, 220V	1	-
--	5906033	MAXJAX BRANDING LABEL	4	-
--	5906034	MAXJAX SAFETY LABEL	1	-
--	5906035	MAXJAX SAFETY LOCKS WARNING LABEL	2	-
--	5906005	MAX CAPACITY NTRL 6K LABEL, ENGLISH-FRENCH	1	-
--	5906036	SERIAL TAG F, MAX JAX	1	-
--	5905377	NOTICE LABEL, ALI/WLSIA01	1	-
--	5905109	WARNING ALI/WL 101	1	-
--	5905654	LABEL: ALI/ALCTV-2017 GOLD LABEL, CAN-US; MET LABS	1	-
--	5906044	AMERICAN OWNED LABEL	1	-

DO NOT SCALE DRAWING

NAME: _____ DATE: _____

DRAWN: CA 06/23/2021

CHECKED: OR 06/23/2021

THIRD ANGLE PROJECTION

SMILEY FACE

PROPRIETARY AND CONFIDENTIAL
THE INFORMATION CONTAINED IN THIS DRAWING IS THE SOLE PROPERTY OF BENDPAK INC. ANY REPRODUCTION OR TRANSMISSION OF THIS DRAWING WITHOUT THE WRITTEN PERMISSION OF BENDPAK INC. IS PROHIBITED.

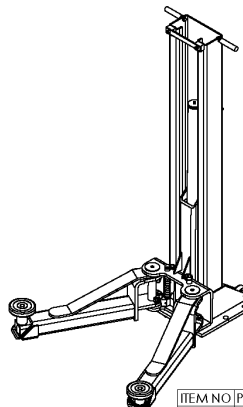
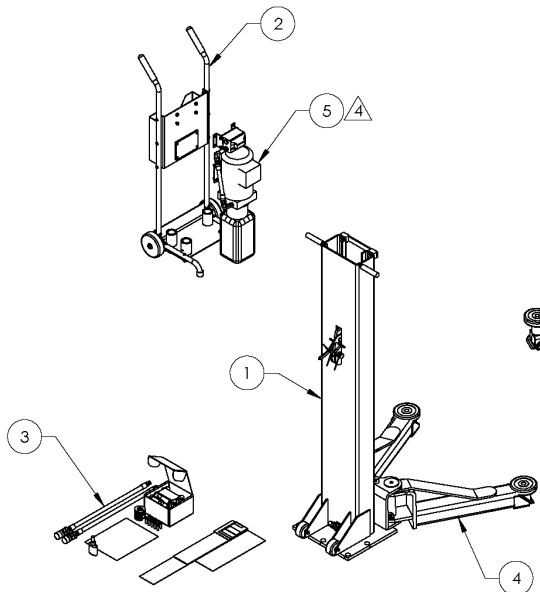
1645 LEMONWOOD DR.
SANTA PAULA, CA 93060

TITLE: M6K PRODUCTION LIFT, 220V

SIZE: A DWG. NO. 5260653 REV. A

SCALE: 1:22 SHEET 1 OF 3

△ 4. POWER UNIT REFERENCE ON PURCHASE ORDER



ITEM NO	PART NUMBER	DESCRIPTION	QTY	REV
1	5215935	M6K POST ASSEMBLY	2	D
2	5215936	MAX JAX POWER UNIT STAND ASSEMBLY	1	B
3	5250293	M6K PARTS BOX	1	E
4	5215938	MAXJAX ARM ASSEMBLY	4	A
5	REF	M6K POWER UNIT, 110V	1	-
--	5906033	MAXJAX BRANDING LABEL	4	-
--	5906034	MAXJAX SAFETY LABEL	1	-
--	5906035	MAXJAX SAFETY LOCKS WARNING LABEL	2	-
--	5906005	MAX CAPACITY NTRL 6K LABEL, ENGLISH-FRENCH	1	-
--	5906036	SERIAL TAG F, MAX JAX	1	-
--	5905377	NOTICE LABEL, ALI/WLSIA01	1	-
--	5905109	WARNING ALI/WL 101	1	-
--	5905654	LABEL: ALI/ALCTV-2017 GOLD LABEL, CAN-US; MET LABS	1	-
--	5906044	AMERICAN OWNED LABEL	1	-

DO NOT SCALE DRAWING

NAME: _____ DATE: _____

DRAWN: OR 05/29/2020

CHECKED: OR 06/23/2021

THIRD ANGLE PROJECTION

SMILEY FACE

PROPRIETARY AND CONFIDENTIAL
THE INFORMATION CONTAINED IN THIS DRAWING IS THE SOLE PROPERTY OF BENDPAK INC. ANY REPRODUCTION OR TRANSMISSION OF THIS DRAWING WITHOUT THE WRITTEN PERMISSION OF BENDPAK INC. IS PROHIBITED.

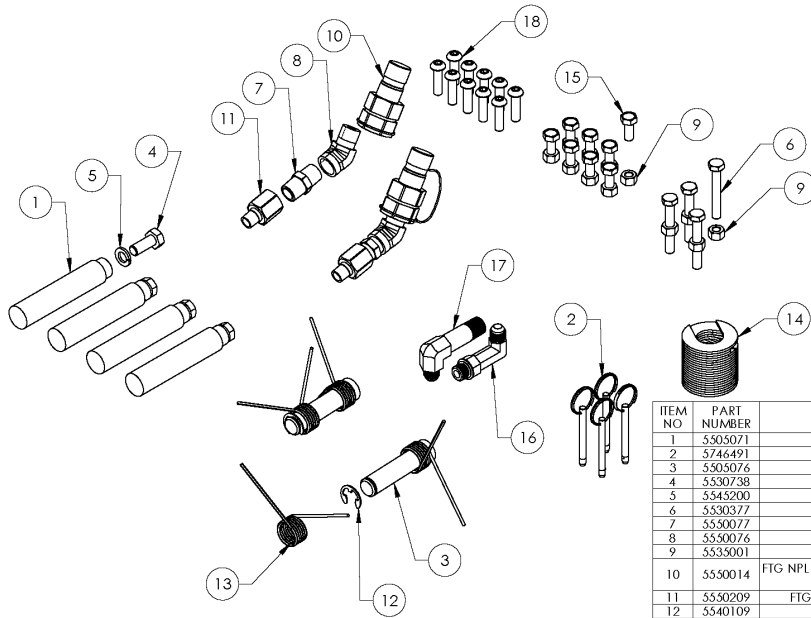
1645 LEMONWOOD DR.
SANTA PAULA, CA 93060

TITLE: M6K PRODUCTION LIFT, 110V

SIZE: A DWG. NO. 5260614 REV. J

SCALE: 1:22 SHEET 1 OF 3

△ 4. POWER UNIT REFERENCE ON PURCHASE ORDER



ITEM NO	PART NUMBER	DESCRIPTION	QTY	REV
1	5305071	M6K SAFETY PIN ASSEMBLY	4	B
2	5746491	MAXJAX LIFT HEAD RELEASE PIN	4	A
3	5305076	MAXJAX SAFETY CLEVIS PIN	2	A
4	5330738	HHB M10 x 1.5 x 25	4	-
5	5345200	WASHER M10 x Ø18 SL	4	-
6	5330377	HHB M8 x 1.25 x 55	4	-
7	5350077	FTG -06 NPTF x -06 NPTF, HEX NIPPLE	2	-
8	5350076	FTG 45° ELB -06 NPTF x -06 NPTF	2	-
9	5333001	NUT M8 x 1.25 NL	12	-
10	5350014	FTG NPL -06 NPTF x 3/8 QUICK-CONNECTOR COUPLER MALE; NON SPILL DESIGN	2	-
11	5350209	FTG -04 NPTF x -06 NPTF, STRAIGHT EXPANDER	2	-
12	5340109	E RING Ø16mm OD DIN 6799 0160	2	-
13	5340075	R.H., 2.5 WIRE DIA., Ø20.5 x 75 LG	4	-
14	5345335	C WASHER SHIM FOR LIFTS	21	-
15	5330304	HHB M8 x 1.25 x 20	8	-
16	5350074	FTG 90° ELB 3/8" JIC MALE x 3/8" ORB MALE, LONG	1	-
17	5350170	FTG 90° ELB 3/8" JIC MALE x 3/8" NPTF MALE, LONG	1	-
18	5330412	BH5K M8 x 1.25 x 30 CL10.9	10	-

DO NOT SCALE DRAWING

NAME: _____ DATE: _____

DRAWN OR 06/19/2020
 CHECKED OR 02/15/2021

DIMENSIONS ARE IN MM

THIRD ANGLE PROJECTION

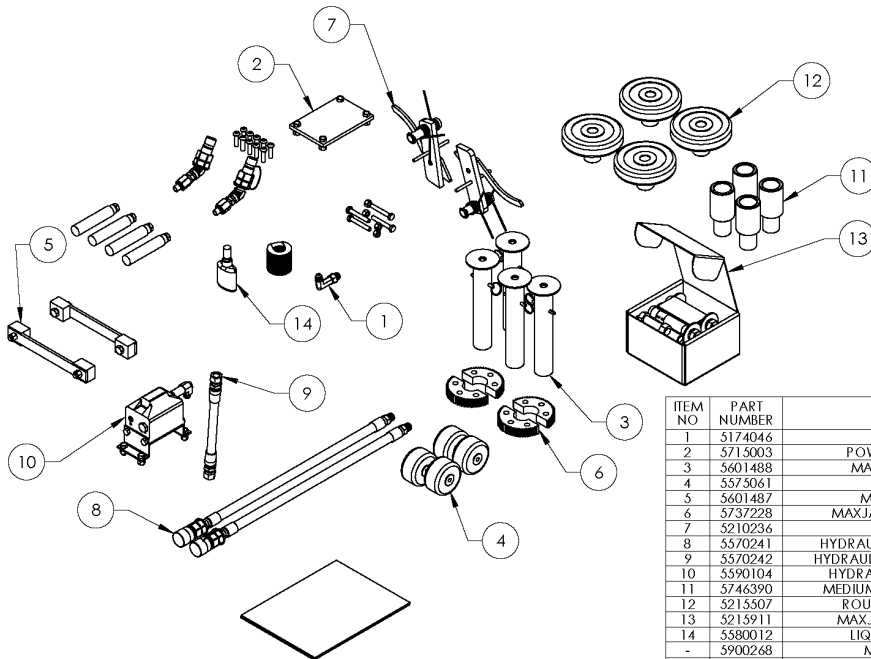
PROPRIETARY AND CONFIDENTIAL
 THE INFORMATION CONTAINED IN THIS DRAWING IS THE SOLE PROPERTY OF BENDPAK INC. ANY REPRODUCTION OR TRANSMISSION OF THIS DRAWING WITHOUT THE WRITTEN PERMISSION OF BENDPAK INC. IS PROHIBITED.

BP BendPak.
 1645 LEMONWOOD DR.
 SANTA PAULA, CA 93060

TITLE: **M6K PARTS BAG**

SEE DWG. NO. **A 5174046** REV **D**

SCALE: 1:4 SHEET 1 OF 1



ITEM NO	PART NUMBER	DESCRIPTION	QTY	REV
1	5174046	M6K PARTS BAG	1	D
2	5715003	POWER UNIT VIBRATION DAMPENER	1	B
3	5601488	MAXJAX LIFT HEAD PIN WELDMENT	4	B
4	5573061	M6K POST WHEEL	4	-
5	5601487	MAXJAX POST STRAP ASSEMBLY	2	A
6	5737228	MAXJAX BOLT ON ARM RESTRAINT GEAR	4	A
7	5210236	MAXJAX SAFETY WELDMENT	2	B
8	5370241	HYDRAULIC HOSE ASSEMBLY Ø10 x 4520mm	2	A
9	5370242	HYDRAULIC HOSE ASSEMBLY Ø10 x 295mm DS	1	C
10	5390104	HYDRAULIC FLOW DIVIDER CAST IRON; SI	1	-
11	5746390	MEDIUM LIFT PAD EXTENSION Ø35 x 113mm	4	E
12	5215507	ROUND LIFT PAD ADAPTER ASSEMBLY	4	G
13	5215911	MAXJAX STANDARD ANCHOR BOLT KIT	1	-
14	5380012	LIQUID PTFE THREAD SEALANT 50ml	1	-
-	5900268	MAXJAX OPERATION MANUAL	1	-
-	5900304	MAXJAX INSTALLATION MANUAL	1	-

DO NOT SCALE DRAWING

NAME: _____ DATE: _____

DRAWN OR 06/01/2020
 CHECKED OR 02/25/2021

DIMENSIONS ARE IN MM

THIRD ANGLE PROJECTION

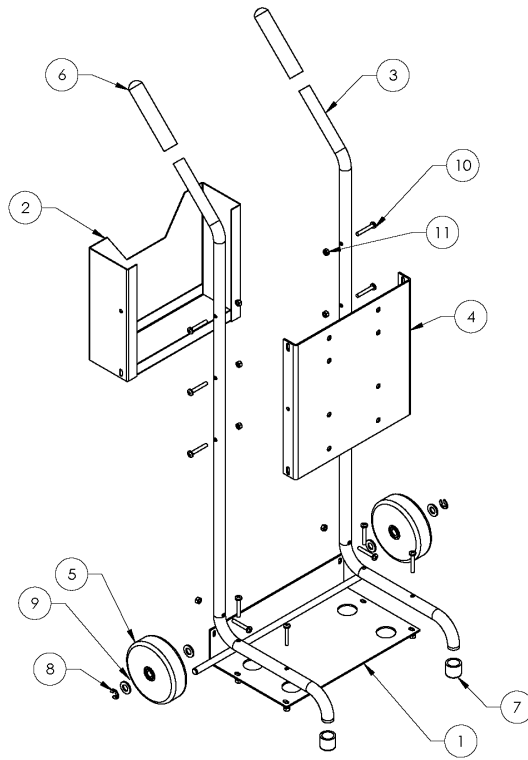
PROPRIETARY AND CONFIDENTIAL
 THE INFORMATION CONTAINED IN THIS DRAWING IS THE SOLE PROPERTY OF BENDPAK INC. ANY REPRODUCTION OR TRANSMISSION OF THIS DRAWING WITHOUT THE WRITTEN PERMISSION OF BENDPAK INC. IS PROHIBITED.

BP BendPak.
 1645 LEMONWOOD DR.
 SANTA PAULA, CA 93060

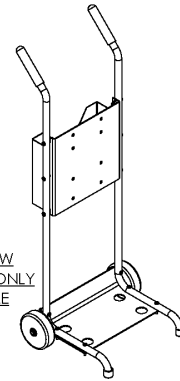
TITLE: **M6K PARTS BOX**

SEE DWG. NO. **A 5250293** REV **F**

SCALE: 1:25 SHEET 1 OF 1

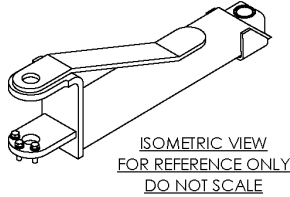


ISOMETRIC VIEW
FOR REFERENCE ONLY
DO NOT SCALE

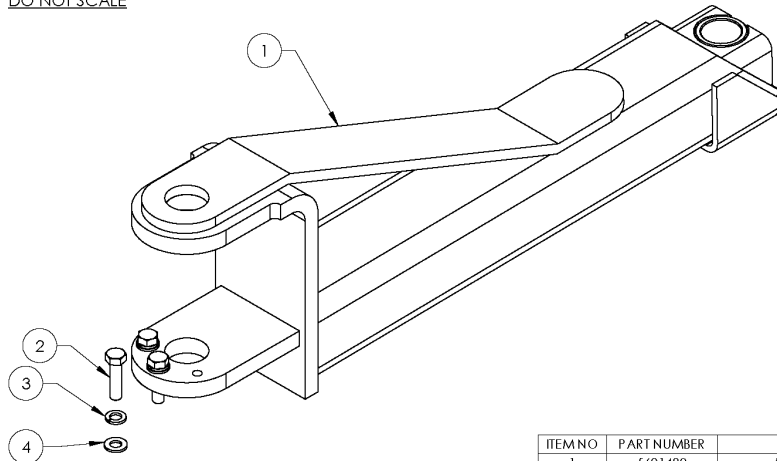


ITEM NO	PART NUMBER	DESCRIPTION	QTY	REV
1	5601535	MAX JAX BOTTOM PLATE WELDMENT, STAND	1	A
2	5601474	M&K HOSE STORAGE BOX WELDMENT	1	B
3	5755171	MAX JAX STAND HANDLE	2	B
4	5737162	MAX JAX STAND SUPPORT PLATE	1	A
5	5215970	MAX JAX HAND CART WHEEL ASSEMBLY	2	-
6	5715041	MAX JAX VINYL GRIP, Ø22 I.D.	2	A
7	5716056	MAX JAX VINYL CAP, Ø22 I.D.	2	B
8	5540113	E RING Ø1/2" OD TRUARC 5133-50	2	-
9	5545141	WASHER M12 x 24 FLAT CL 10,9	4	-
10	5530378	PHPS M6 x 1.0 x 40mm	12	-
11	5535357	NUT M6 x 1.0 NL	12	-

DO NOT SCALE DRAWING	NAME	DATE	BendPak 1645 LEMONWOOD DR. SANTA PAULA, CA 93060
	DRAWN OR	05/27/2020	
	CHECKED		
DIMENSIONS ARE IN MM	THIRD ANGLE PROJECTION	TITLE	REV
		MAX JAX POWER UNIT STAND ASSEMBLY	
<small>PROPRIETARY AND CONFIDENTIAL THE INFORMATION CONTAINED IN THIS DRAWING IS THE SOLE PROPERTY OF BENDPAK, INC. ANY REPRODUCTION IN PART OR AS A WHOLE WITHOUT THE WRITTEN PERMISSION OF BENDPAK, INC. IS PROHIBITED.</small>	SIZE	DWG. NO.	REV
	A	5215936	B
	SCALE: 1:8		SHEET 1 OF 1



ISOMETRIC VIEW
FOR REFERENCE ONLY
DO NOT SCALE



ITEM NO	PART NUMBER	DESCRIPTION	QTY	REV
1	5601489	MAX JAX ARM WELDMENT	1	A
2	5530302	HHB M10 x 1.5 x 40 FULLY THREAD	3	-
3	5545200	WASHER M10 x Ø18 SL	3	-
4	5545341	WASHER M10 x Ø20 FLAT	3	-

DO NOT SCALE DRAWING	NAME	DATE	BendPak 1645 LEMONWOOD DR. SANTA PAULA, CA 93060
	DRAWN OR	05/21/2020	
	CHECKED	07/20/2020	
DIMENSIONS ARE IN MM	THIRD ANGLE PROJECTION	TITLE	REV
		MAX JAX ARM ASSEMBLY	
<small>PROPRIETARY AND CONFIDENTIAL THE INFORMATION CONTAINED IN THIS DRAWING IS THE SOLE PROPERTY OF BENDPAK, INC. ANY REPRODUCTION IN PART OR AS A WHOLE WITHOUT THE WRITTEN PERMISSION OF BENDPAK, INC. IS PROHIBITED.</small>	SIZE	DWG. NO.	REV
	A	5215938	A
	SCALE: 1:4		SHEET 1 OF 2

Automotive Lift Institute (ALI) Store

You probably checked the **ALI's Directory of Certified Lifts** (www.autolift.org/ali-directory-of-certified-lifts/) before making your most recent Lift purchase, but did you know the **ALI Store** (www.autolift.org/ali-store/) offers a wide variety of professional, easy-to-use, and reasonably priced training and safety materials that will make your garage a safer place to work?

To find a Certified Lift Inspector in your local area, visit **Directory of ALI Certified Lift Inspection Providers** (www.autolift.org/find-a-certified-auto-lift-inspector/).

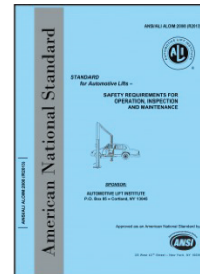
The ALI Store is your trusted source for workplace safety!



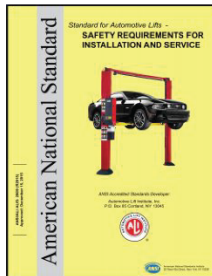
Lifting It Right Online Certificate Course. Make *sure* you and your people are lifting vehicles the right way.



ALI Lift Inspector Certification Program Registration. Become an ALI Certified Lift Inspector.



ANSI/ALI ALOIM Standard for Automotive Lifts. Safety Requirements for Operation, Inspection, and Maintenance.



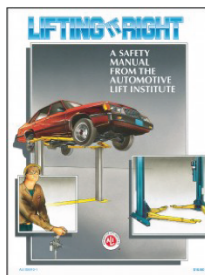
ANSI/ALI ALIS Standard. Safety Requirements for Installation and Service.



Guide to Hitting Vehicle Lifting Points for Frame-Engaging Lifts. Don't eyeball your lifting points, *know* where they are.



Lift Operator Safety Materials. Five safety documents in a single package.



Lifting It Right. A hardcopy version of the *Lifting It Right* safety manual from the Automotive Lift Institute.



Uniform Warning Labels and Placards for 2-Posts. Labels in Mandarin, French Canadian, and Spanish are also available.



Safety Tips Card. Reminds your people of 13 key safety tips to follow daily.

Visit today and get the training and materials you need to work safely:
www.autolift.org/ali-store/.

This page left blank intentionally