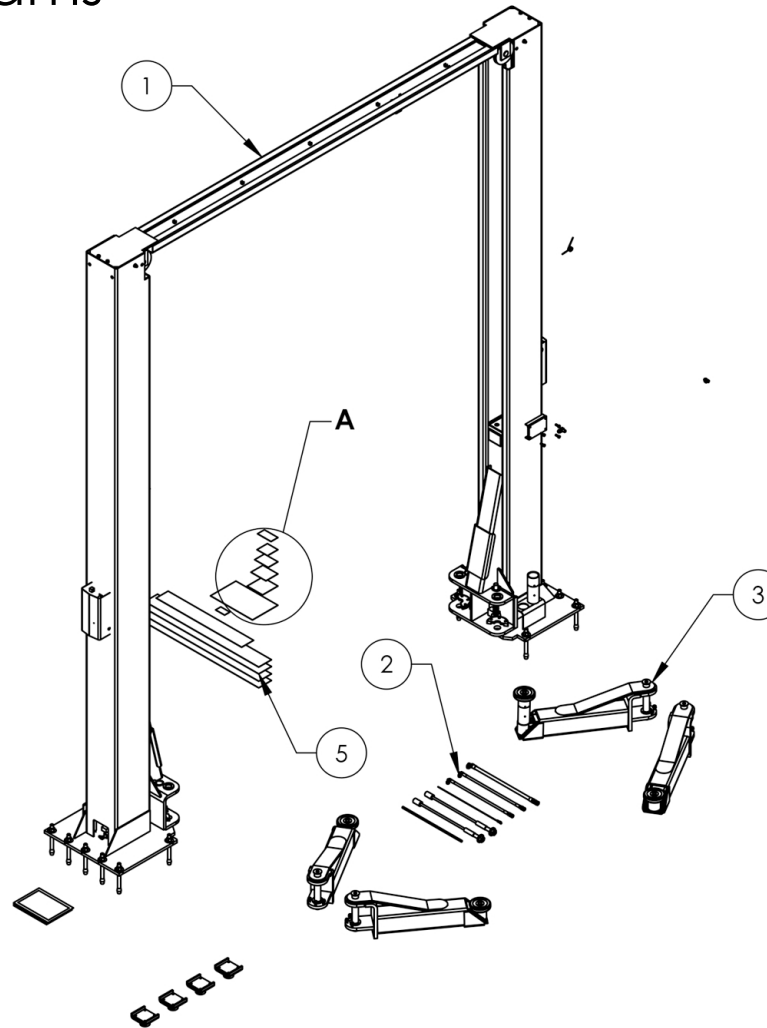


Service Manual

Service Parts & Diagrams

XPR-12CL

BendPak SKU 5260567
XPR-12CL Two-Post Car Lift
Version E
04/20/2016



This guide is a troubleshooting reference used for maintaining and servicing your BendPak product. It provides comprehensive information on identifying serviceable parts and components and assists in troubleshooting problems and performing assembly/disassembly procedures.



BendPak, Inc. Corporate Office

1645 Lemonwood Drive
Santa Paula, CA 93060 USA
Toll Free US/Canada: 1-800-253-2363
Fax: 1-805-933-9160
info@bendpak.com

Customer Service Desk / Warranty

Customer Service Representatives
Office Tel: 1-805-933-9970
Toll Free US/Canada: 1-800-253-2363
Fax: 1-805-933-9160
customerservice@bendpak.com

Parts Orders

Customer Service Representatives
Office Tel: 1-805-933-9970
Toll Free US/Canada: 1-800-253-2363
Fax: 1-805-933-9160
parts@bendpak.com

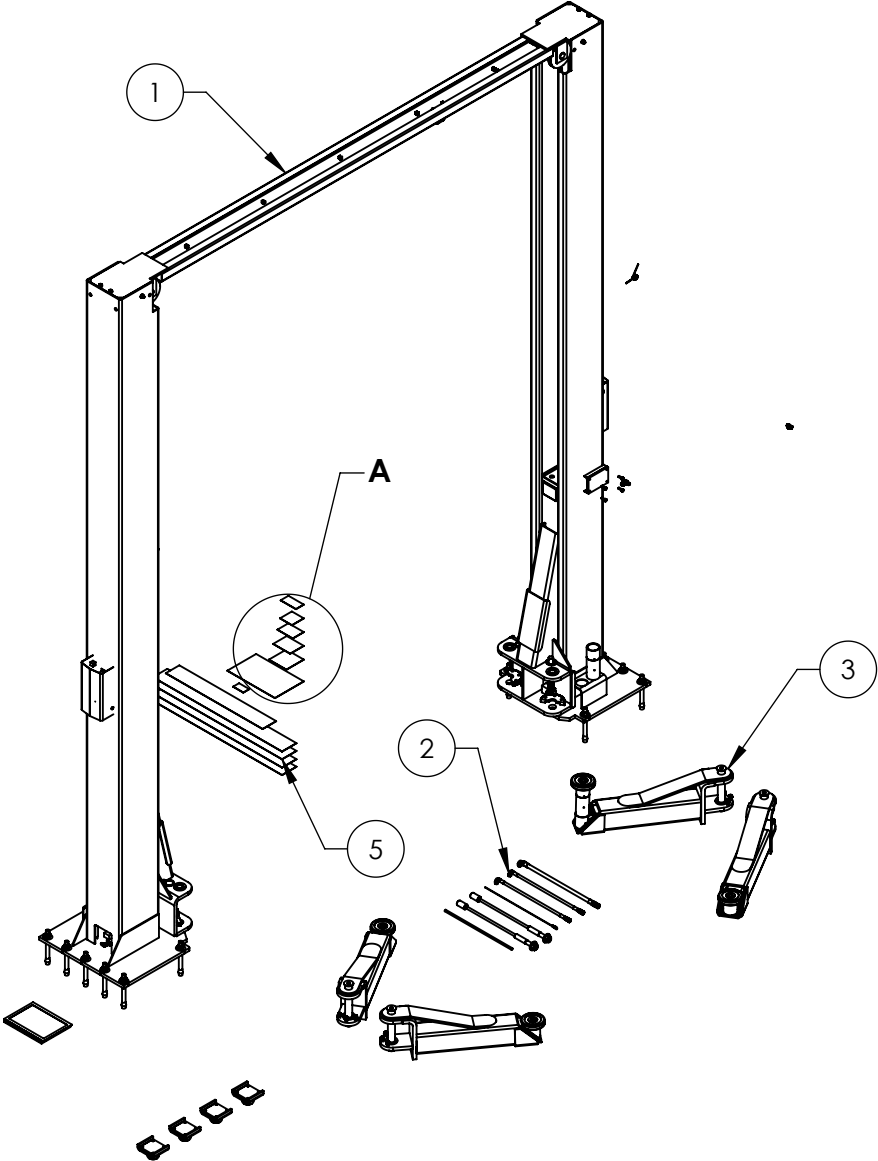
Domestic Sales & Service

USA Sales Representatives
Office Tel: 1-805-933-9970
Toll Free US/Canada: 1-800-253-2363
Fax: 1-805-933-9160
sales@bendpak.com

International Sales & Service

Office Tel: 1-805-933-9970
Exports Department: 1-805-933-9970 Ext. 192
Toll Free US/Canada: 1-800-253-2363
Fax: 1-805-933-9160
bpkexports@bendpak.com




| | | REVISION | | | |
|-----|--|------------|-----------|-------|--|
| REV | DESCRIPTION | DATE | EDITED BY | ECO# | |
| A | PRODUCTION RELEASE, DERIVED FROM 5260440 | 12/15/2015 | TM | 00738 | |
| B | UPDATED BOM REVISION | 03/22/2016 | TM | 00750 | |

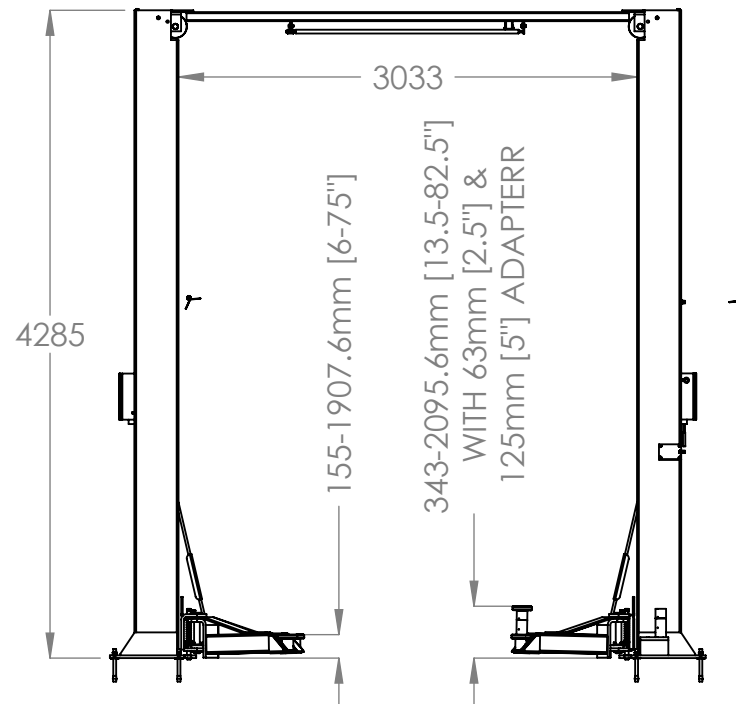
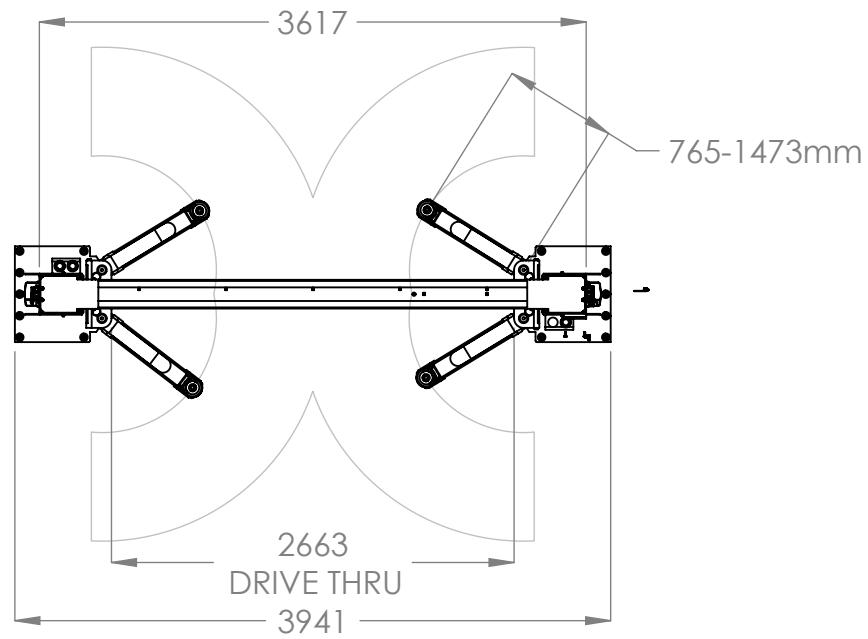



NOTE: UNLESS OTHERWISE SPECIFIED.

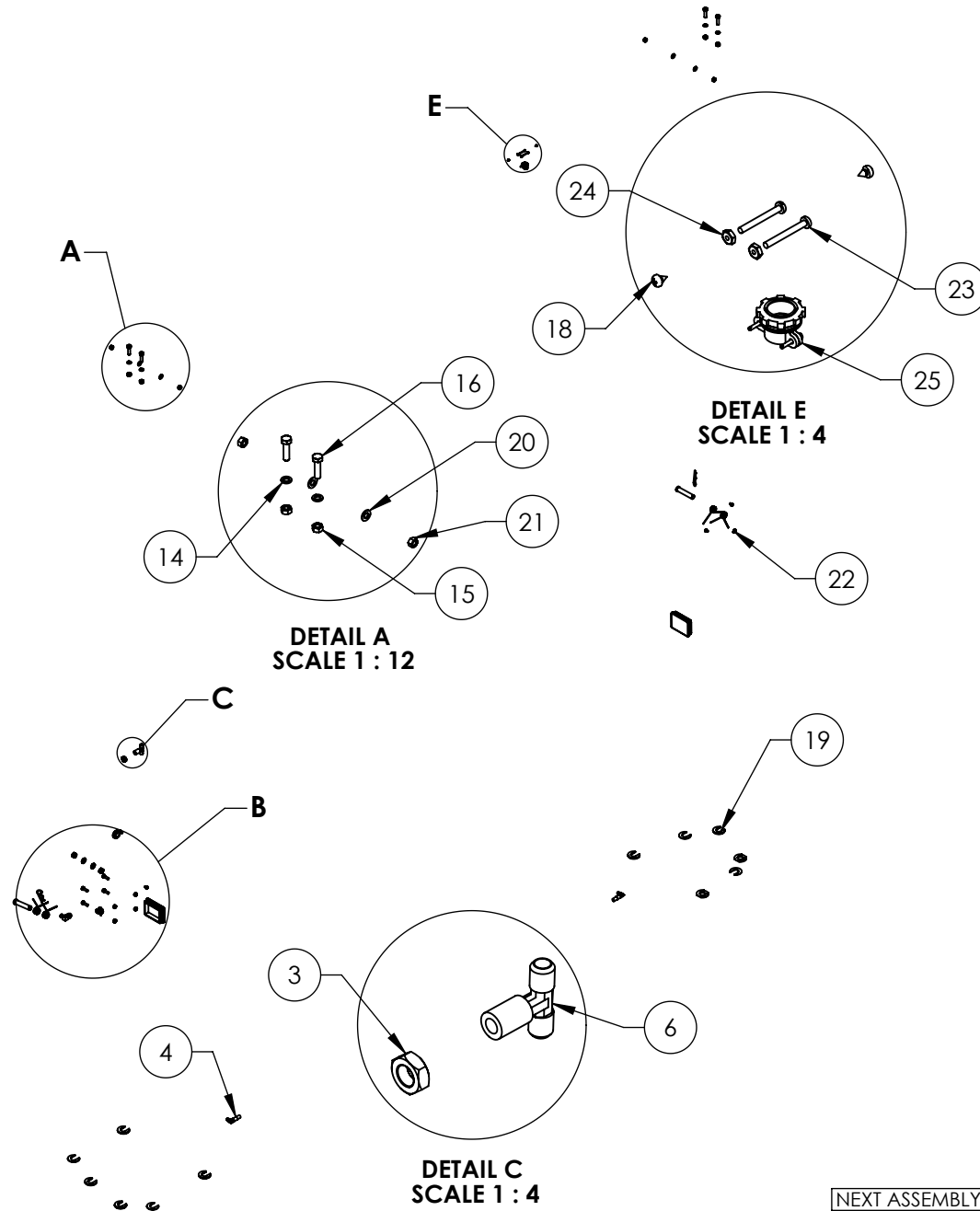
1. SEE SHIPPING INSTRUCTIONS FOR FINAL PACKAGING
2. ALL LABELS TO BE APPLIED TO POSTS AFTER PAINTING. SEE ATTACHED LABEL PLACEMENT SHEET.

| ITEM NO | PART NUMBER | DESCRIPTION | QTY | REV |
|---------|-------------|--|-----|-----|
| 1 | 5245138 | XPR-12C LIFT SUPERSTRUCTURE | 1 | W |
| 2 | 5250041 | XPR-12CL/12CL-LWB PARTS BOX | 1 | B |
| 3 | 5215283 | XPR-12CL/FDL TRIPLE TELESCOPING ARM ASSEMBLY | 4 | D |
| 4 | 5905109 | WARNING ALI/WL 101 | 1 | - |
| 5 | 5905131 | 2 POST DECAL KIT, LESS ALI | 1 | C |
| 6 | 5905404 | MAX CAP DANGER 12K | 1 | - |
| 7 | 5905465 | MANUFACTURER LABEL | 1 | - |
| 8 | 5905660 | MAX CAP NRTL DANGER 12K | 1 | - |
| 9 | 5905940 | PRODUCT DATA LABEL | 1 | - |
| 10 | 5905950 | 2015 SERIAL TAG-A-5905950 | 1 | - |

| | | | | | | |
|---|--|---|---------------|--|----------|--------------|
| DO NOT SCALE DRAWING | | NAME | DATE | <div>1645 LEMONWOOD DR. SANTA PAULA, CA 93060</div> | | |
| DIMENSIONS ARE IN MM | | DRAWN | TM 12/15/2015 | | | |
| | | CHECKED | | | | |
| | | THIRD ANGLE PROJECTION | | | | |
|  | |  | | TITLE: XPR-12CL PRODUCTION LIFT VER E | | |
| | | | | SIZE | DWG. NO. | REV |
| | | | | A | 5260567 | B |
| PROPRIETARY AND CONFIDENTIAL THE INFORMATION CONTAINED IN THIS DRAWING IS THE SOLE PROPERTY OF BENDPAK INC. ANY REPRODUCTION IN PART OR AS A WHOLE WITHOUT THE WRITTEN PERMISSION OF BENDPAK INC. IS PROHIBITED. | | | | SCALE: 1:40 | | SHEET 1 OF 2 |



| | | |
|---|----------------------------|---|
|  | | 1645 LEMONWOOD DR. SANTA PAULA, CA 93060 |
| TITLE: XPR-12CL PRODUCTION LIFT VER E | | |
| SIZE A | DWG. NO. 5260567 | REV B |
| SCALE: 1:50 | | SHEET 2 OF 2 |

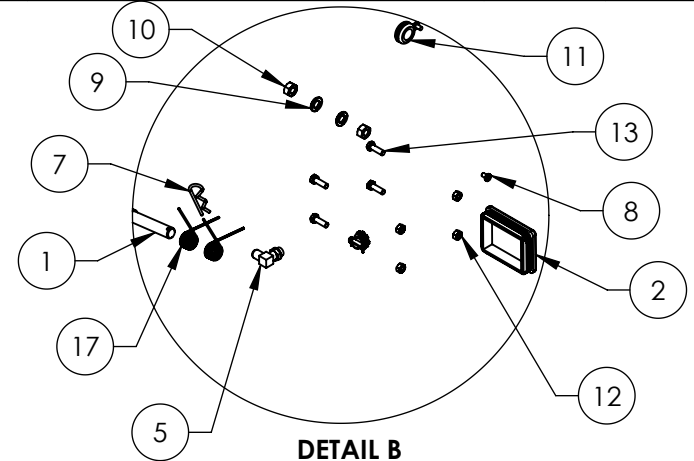


NOTE: UNLESS OTHERWISE SPECIFIED.

1. SEE SHIPPING INSTRUCTIONS FOR FINAL PACKAGING

| NEXT ASSEMBLY |
|---------------|
| 5250036 |
| 5250039 |
| 5250041 |
| 5250043 |
| 5250044 |
| 5250048 |

| REVISION | | | | |
|----------|--|------------|-----------|-------|
| REV | DESCRIPTION | DATE | EDITED BY | ECO# |
| G | ADDED (2) 5540075, REPLACED 5530314 WITH 5530261, REPLACED 5540001 WITH 5540075, UPDATED TITLE TO REFLECT WHERE USED, UPDATED BOM REVISION AND NEXT ASSEMBLIES | 06/17/2013 | TM | 00605 |
| H | UPDATED BOM REVISION | 06/02/2014 | TM | 00649 |
| J | REPLACED 5505113 WITH 5505001, UPDATED NEXT ASSEMBLY | 10/06/2014 | TM | 00663 |
| J-001 | UPDATED NEXT ASSEMBLY | 11/18/2015 | JM | 00732 |
| J-002 | UPDATED NEXT ASSEMBLIES | 12/15/2015 | TM | 00738 |



| ITEM NO | PART NUMBER | DESCRIPTION | QTY | REV |
|---------|-------------|---|-----|-----|
| 1 | 5505001 | GP-7/PI-6000/XPR SERIES SAFETY CLEVIS PIN | 2 | A |
| 2 | 5715196 | XPR PLASTIC COVER BLOCK 105 x 80 | 2 | C |
| 3 | 5535022 | NUT 9/16-18 JN | 1 | - |
| 4 | 5550113 | FTG ELB -04 NPT L x -04 JIC | 2 | - |
| 5 | 5550183 | FTG ELB -06 JIC -06L ORB | 1 | - |
| 6 | 5550003 | FTG TEE -04 JIC -04 JIC -06 JIC | 1 | - |
| 7 | 5505350 | MODEL #211 HAIR PIN/LARGE | 2 | - |
| 8 | 5530261 | PHPS M6 x 1 x 10 | 4 | - |
| 9 | 5545347 | WASHER M12 FLAT WASHER | 2 | - |
| 10 | 5535354 | NUT M12 x 1.75 | 2 | - |
| 11 | 5520001 | RUBBER GROMMET 3/4 I.D. | 1 | - |
| 12 | 5535001 | NUT M8 x 1.25 NL | 4 | - |
| 13 | 5530010 | HHB M8 x 1.25 x 25 | 4 | - |
| 14 | 5545200 | WASHER M10 x Ø18 SL | 4 | - |
| 15 | 5535298 | NUT M10 x 1.5 | 4 | - |
| 16 | 5530760 | HEX HEAD BOLT M10 x 1.25 x 35 | 4 | - |
| 17 | 5540075 | 2.5 WIRE DIA. Ø20.5 x 75 LG | 4 | A |
| 18 | 5530750 | SIS M4.2 x 1.7 x 6 | 2 | - |
| 19 | 5545535 | C WASHER SHIM FOR LIFTS | 20 | - |
| 20 | 5545341 | WASHER M10 x Ø20 FLAT | 4 | - |
| 21 | 5535013 | NUT M10 x 1.5 NL | 4 | - |
| 22 | 5505031 | ROTOR CLIP 12mm SS | 1 | - |
| 23 | 5530115 | BHS 6-32 x 1.25 | 2 | - |
| 24 | 5535190 | HN 6-32 | 2 | - |
| 25 | 5520140 | ROMEX CONNECTOR 3/8 #6623 | 2 | - |

DO NOT SCALE DRAWING

NAME DATE

DRAWN TM 02/11/2010

CHECKED CA 02/19/2016

DIMENSIONS ARE IN MM

THIRD ANGLE PROJECTION



PROPRIETARY AND CONFIDENTIAL
THE INFORMATION CONTAINED IN THIS DRAWING IS THE SOLE PROPERTY OF BENDPAK INC. ANY REPRODUCTION IN PART OR AS A WHOLE WITHOUT THE WRITTEN PERMISSION OF BENDPAK INC. IS PROHIBITED.

BendPak 1645 LEMONWOOD DR.
SANTA PAULA, CA 93060

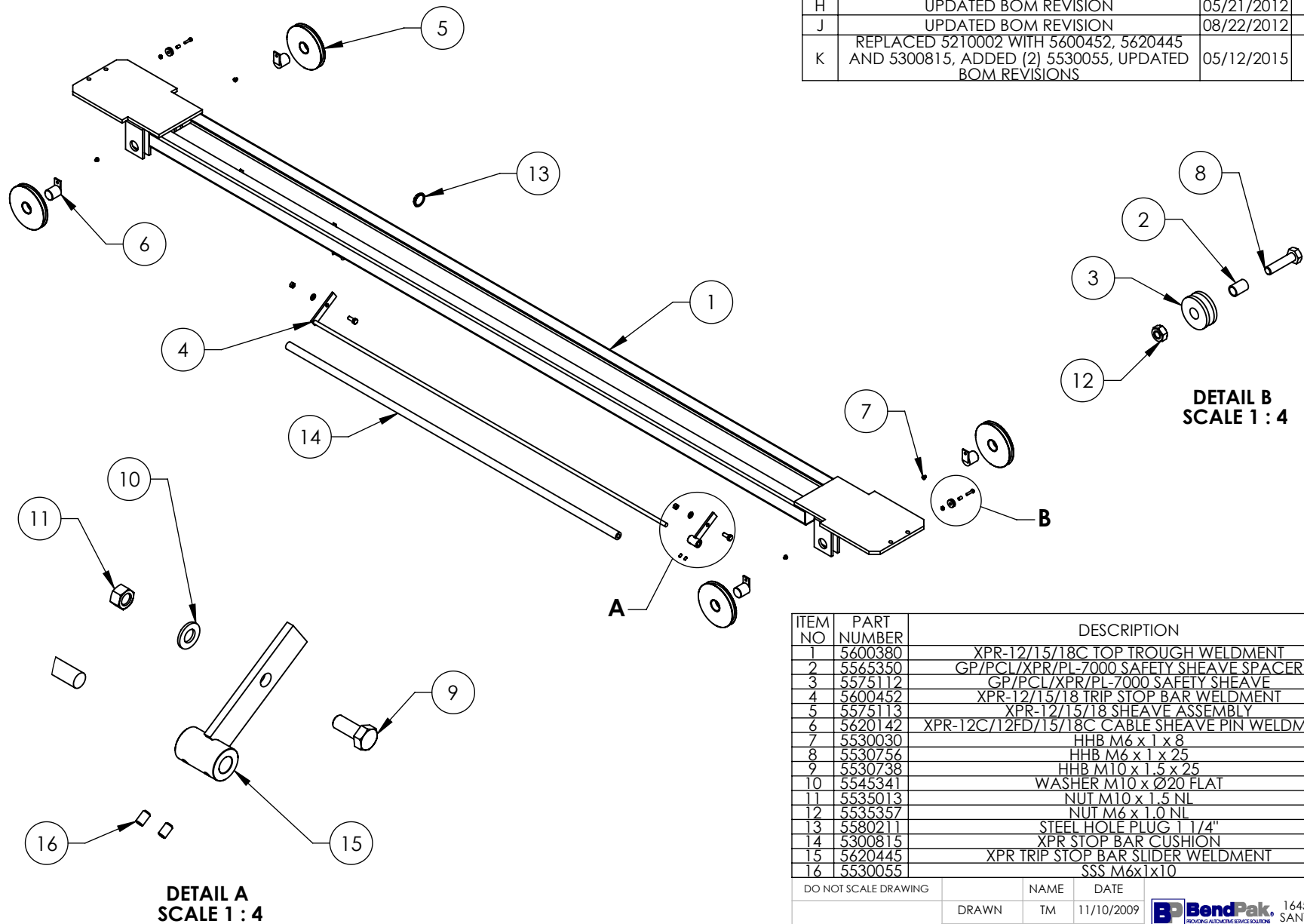
TITLE: XPR CLEARFLOOR
PARTS BAG

SIZE DWG. NO. REV
A 5174518 J

SCALE: 1:30

SHEET 1 OF 1

| REVISION | | | | |
|----------|--|------------|-----------|-------|
| REV | DESCRIPTION | DATE | EDITED BY | ECO# |
| H | UPDATED BOM REVISION | 05/21/2012 | TM | 00517 |
| J | UPDATED BOM REVISION | 08/22/2012 | TM | 00542 |
| K | REPLACED 5210002 WITH 5600452, 5620445 AND 5300815, ADDED (2) 5530055, UPDATED BOM REVISIONS | 05/12/2015 | TM | 00689 |



| ITEM NO | PART NUMBER | DESCRIPTION | QTY | REV |
|---------|-------------|---|-----|-----|
| 1 | 5600380 | XPR-12/15/18C TOP TROUGH WELDMENT | 1 | E |
| 2 | 5565350 | GP/PCL/XPR/PL-7000 SAFETY SHEAVE SPACER | 2 | C |
| 3 | 5575112 | GP/PCL/XPR/PL-7000 SAFETY SHEAVE | 2 | C |
| 4 | 5600452 | XPR-12/15/18 TRIP STOP BAR WELDMENT | 1 | A |
| 5 | 5575113 | XPR-12/15/18 SHEAVE ASSEMBLY | 4 | D |
| 6 | 5620142 | XPR-12C/12FD/15/18C CABLE SHEAVE PIN WELDMENT | 4 | A |
| 7 | 5530030 | HHB M6 x 1 x 8 | 4 | -- |
| 8 | 5530756 | HHB M6 x 1 x 25 | 2 | -- |
| 9 | 5530738 | HHB M10 x 1.5 x 25 | 2 | -- |
| 10 | 5545341 | WASHER M10 x Ø20 FLAT | 2 | -- |
| 11 | 5535013 | NUT M10 x 1.5 NL | 2 | -- |
| 12 | 5535357 | NUT M6 x 1.0 NL | 2 | -- |
| 13 | 5580211 | STEEL HOLE PLUG 1 1/4" | 1 | -- |
| 14 | 5300815 | XPR STOP BAR CUSHION | 1 | C |
| 15 | 5620445 | XPR TRIP STOP BAR SLIDER WELDMENT | 1 | C |
| 16 | 5530055 | SSS M6x1x10 | 2 | -- |

DO NOT SCALE DRAWING

DIMENSIONS ARE IN MM



NAME DATE

DRAWN TM 11/10/2009

CHECKED CA 08/04/2015

THIRD ANGLE PROJECTION

PROPRIETARY AND CONFIDENTIAL

THE INFORMATION CONTAINED IN THIS DRAWING IS THE SOLE PROPERTY OF BENDPAK INC. ANY REPRODUCTION IN PART OR AS A WHOLE WITHOUT THE WRITTEN PERMISSION OF BENDPAK INC. IS PROHIBITED.

BendPak 1645 LEMONWOOD DR.
SANTA PAULA, CA 93060

TITLE: XPR-12/15/18C TOP TROUGH ASSEMBLY

SIZE DWG. NO. REV
A 5210031 K

SCALE: 1:18

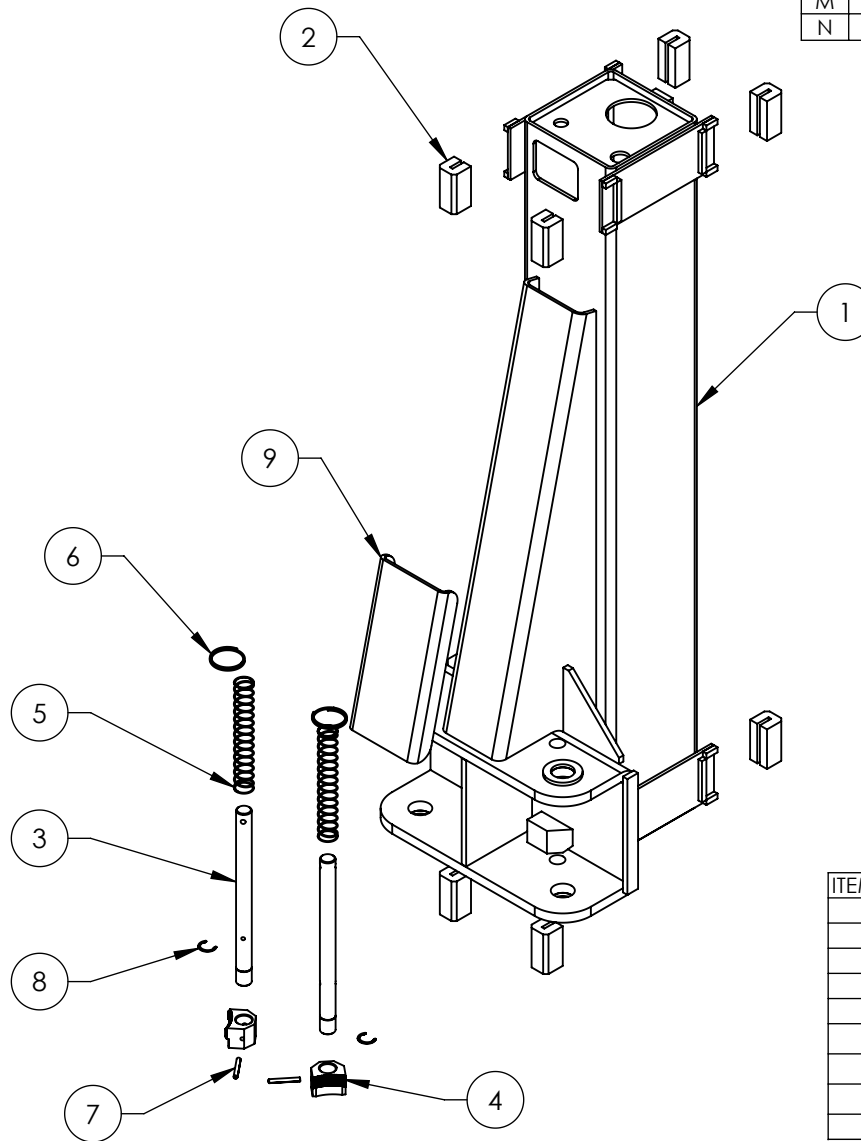
SHEET 1 OF 1

NOTE: UNLESS OTHERWISE SPECIFIED.

- SEE SHIPPING INSTRUCTIONS FOR FINAL PACKAGING
- ASSEMBLE ITEMS AS SHOWN

| |
|---------------|
| NEXT ASSEMBLY |
| 5245138 |
| 5245139 |

| REVISION | | | | |
|----------|----------------------|------------|-----------|-------|
| REV | DESCRIPTION | DATE | EDITED BY | ECO# |
| L | UPDATED BOM REVISION | 06/03/2014 | TM | 00649 |
| M | UPDATED BOM REVISION | 05/14/2105 | TM | 00689 |
| N | UPDATED BOM REVISION | 11/12/2015 | TM | 00738 |



| ITEM NO | PART NUMBER | DESCRIPTION | QTY | REV |
|---------|-------------|---|-----|-----|
| 1 | 5600392 | XPR-12C LIFT HEAD WELDMENT | 1 | K |
| 2 | 5716001 | PL-6000/7000, GP/XPR SERIES GUIDE BLOCK | 8 | E |
| 3 | 5746099 | XPR-12C/FD/15/18C Ø25mm LONG GEAR SHAFT | 2 | D |
| 4 | 5701052 | GP/RTL/XPR ARM INTERNAL GEAR STOP | 2 | E |
| 5 | 5540130 | XPR-12C/FD/15/18C LIFT HEAD SPRING | 2 | A |
| 6 | 5580219 | KEYRING 56mm x 3mm | 2 | - |
| 7 | 5505106 | SPRING PIN M6 x 50 | 2 | - |
| 8 | 5540006 | SNAP RING TRUARC 5103-100 | 2 | - |
| 9 | 5930184 | XPR-12/15/18 LIFT HEAD GUSSET COVER | 1 | C |

DO NOT SCALE DRAWING

NAME DATE

DRAWN TM 11/27/2009

CHECKED CA 02/19/2016

DIMENSIONS ARE IN MM

THIRD ANGLE PROJECTION



PROPRIETARY AND CONFIDENTIAL
THE INFORMATION CONTAINED IN THIS DRAWING IS
THE SOLE PROPERTY OF BENDPAK INC. ANY
REPRODUCTION IN PART OR AS A WHOLE WITHOUT
THE WRITTEN PERMISSION OF BENDPAK INC. IS
PROHIBITED.

BendPak 1645 LEMONWOOD DR.
SANTA PAULA, CA 93060

TITLE: XPR-12C LIFT
HEAD ASSEMBLY

SIZE DWG. NO.

A 5215269

REV

N

SCALE: 1:12

SHEET 1 OF 1

NOTE: UNLESS OTHERWISE SPECIFIED.

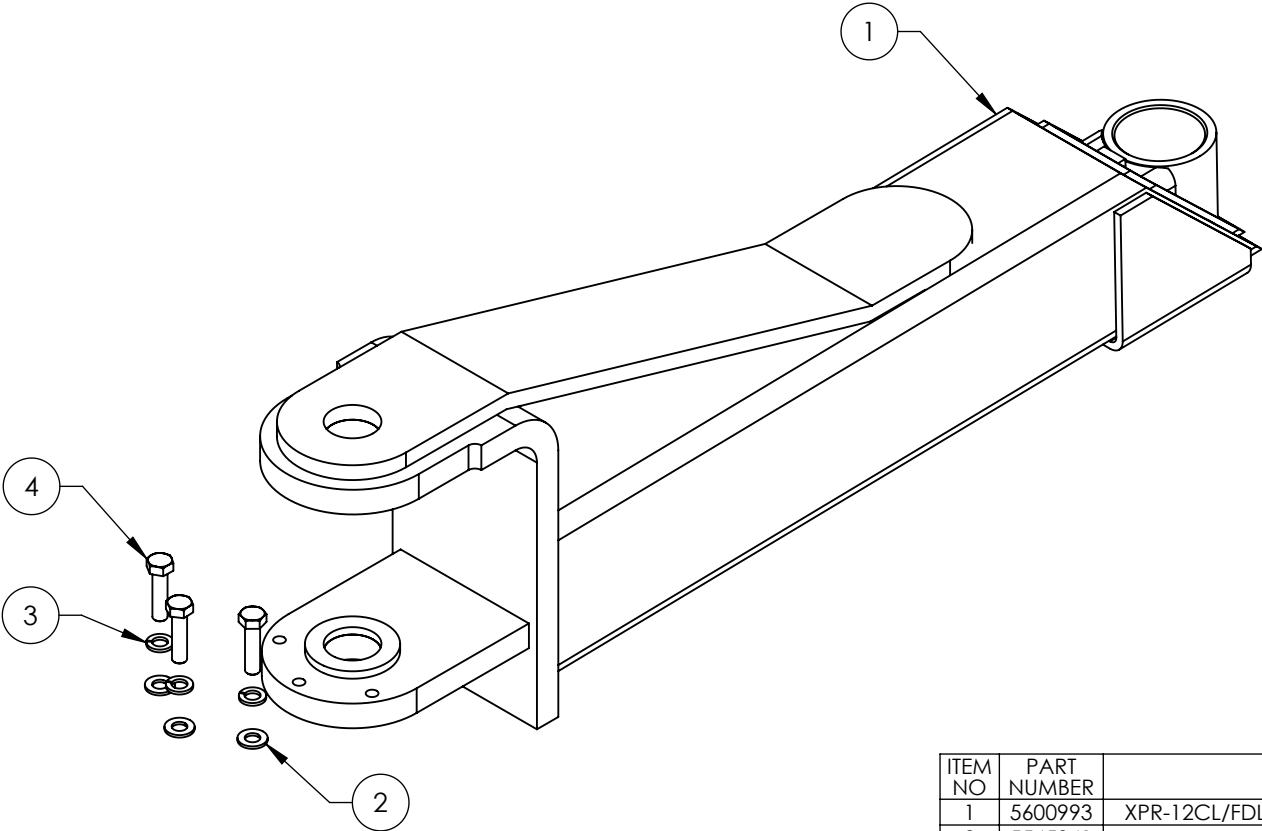
- SEE SHIPPING INSTRUCTIONS FOR FINAL PACKAGING
- ASSEMBLE ITEMS AS SHOWN

NEXT ASSEMBLY




5215292

5215293

| REVISION | | | | |
|----------|---|------------|-----------|-------|
| REV | DESCRIPTION | DATE | EDITED BY | ECO# |
| B | UPDATED BOM REVISION | 09/22/2015 | TM | 00729 |
| C | UPDATED TITLE TO REFLECT WHERE USED UPDATED BOM REVISION AND NEXT ASSEMBLIES | 11/25/2015 | TM | 00738 |
| D | UPDATED BOM REVISION | 02/19/2016 | TM | 00750 |



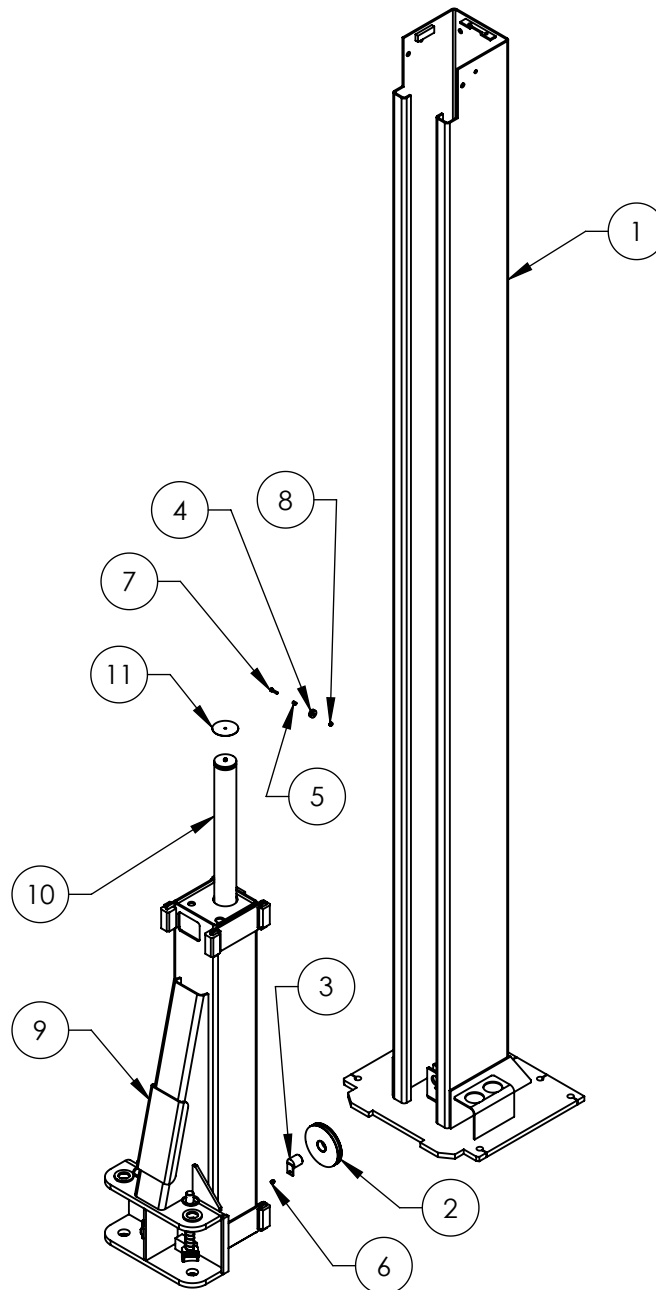
| ITEM NO | PART NUMBER | DESCRIPTION | QTY | REV |
|---------|-------------|--|-----|-----|
| 1 | 5600993 | XPR-12CL/FDL TRIPLE TELESCOPING ARM WELDMENT | 1 | D |
| 2 | 5545341 | WASHER M10 x Ø20 FLAT | 3 | - |
| 3 | 5545200 | WASHER M10 x Ø18 SL | 3 | - |
| 4 | 5530302 | HHB M10 x 1.5 x 40 | 3 | - |

| | | | | | | | | |
|--|--|---|--|------------|--|---|----------|-----|
| DO NOT SCALE DRAWING | | NAME | | DATE | | <div> 1645 LEMONWOOD DR. SANTA PAULA, CA 93060</div> | | |
| DRAWN | | JM | | 06/23/2015 | | | | |
| CHECKED | | | | | | | | |
| DIMENSIONS ARE IN MM | | THIRD ANGLE PROJECTION | | | | TITLE: XPR-12CL/FDL TRIPLE TELESCOPING ARM ASSEMBLY | | |
| <div></div> | | <div></div> | | | | SIZE | DWG. NO. | REV |
| | | | | | | A | 5215283 | D |
| | | | | | | SCALE: 1:5 | | |
| | | <div>PROPRIETARY AND CONFIDENTIAL THE INFORMATION CONTAINED IN THIS DRAWING IS THE SOLE PROPERTY OF BENDPAK INC. ANY REPRODUCTION IN PART OR AS A WHOLE WITHOUT THE WRITTEN PERMISSION OF BENDPAK INC. IS PROHIBITED.</div> | | | | | | |

NOTE: UNLESS OTHERWISE SPECIFIED.

- SEE SHIPPING INSTRUCTIONS FOR FINAL PACKAGING
- ASSEMBLE ITEMS AS SHOWN

| |
|---------------|
| NEXT ASSEMBLY |
| 5260563 |
| 5260567 |
| 5260568 |



NOTE: UNLESS OTHERWISE SPECIFIED.

1. SEE SHIPPING INSTRUCTIONS FOR FINAL PACKAGING
2. ASSEMBLE ITEMS AS SHOWN

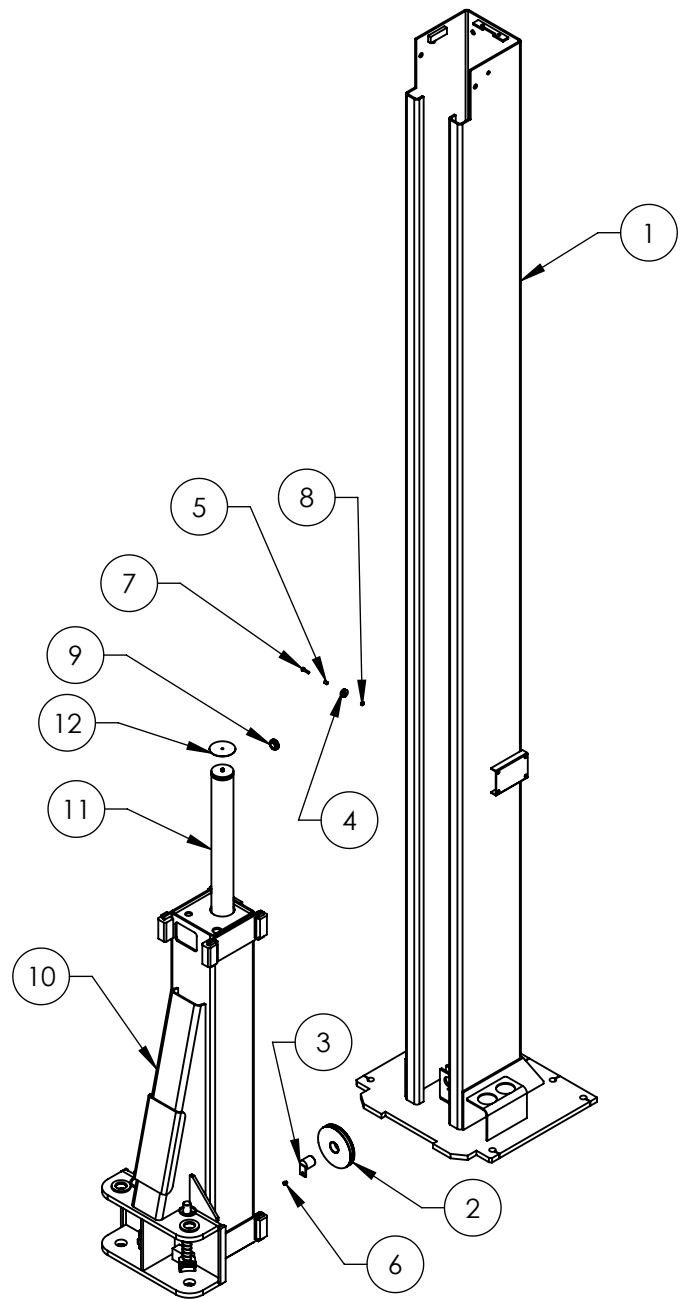
NEXT ASSEMBLY
5245138

| REVISION | | | | |
|----------|-----------------------|------------|-----------|-------|
| REV | DESCRIPTION | DATE | EDITED BY | ECO# |
| T | UPDATED BOM REVISION | 12/01/2014 | TM | 00673 |
| U | UPDATED BOM REVISION | 05/14/2015 | TM | 00689 |
| V | UPDATED BOM REVISIONS | 11/12/2015 | TM | 00738 |

| ITEM NO | PART NUMBER | DESCRIPTION | QTY | REV |
|---------|-------------|---|-----|-----|
| 1 | 5600404 | XPR-12C/15/18C OFF SIDE POST WELDMENT | 1 | F |
| 2 | 5575113 | XPR-12/15/18 SHEAVE ASSEMBLY | 1 | D |
| 3 | 5620142 | XPR-12C/12FD/15/18C CABLE SHEAVE PIN WELDMENT | 1 | A |
| 4 | 5575112 | GP/PCL/XPR/PL-7000 SAFETY SHEAVE | 1 | C |
| 5 | 5565350 | GP/PCL/XPR/PL-7000 SAFETY SHEAVE SPACER | 1 | C |
| 6 | 5530030 | HHB M6 x 1 x 8 | 1 | - |
| 7 | 5530756 | HHB M6 x 1 x 25 | 1 | - |
| 8 | 5535357 | NUT M6 x 1.0 NL | 1 | - |
| 9 | 5215269 | XPR-12C LIFT HEAD ASSEMBLY | 1 | N |
| 10 | 5502305 | CYLINDER ASSEMBLY Ø2.5 x 69 | 1 | E |
| 11 | 5701717 | XPR HEAVY DUTY CYLINDER STOPPER | 1 | A |

| | | | | |
|---|---------|------|------------|--|
| DO NOT SCALE DRAWING | | NAME | DATE | 1645 LEMONWOOD DR. SANTA PAULA, CA 93060 |
| DIMENSIONS ARE IN MM | DRAWN | TM | 01/05/2010 | |
| | CHECKED | CA | 02/18/2016 | |
| THIRD ANGLE PROJECTION | | | | TITLE: XPR-12C OFF SIDE POST ASSEMBLY SIZE DWG. NO. A 5215292 REV V |
| PROPRIETARY AND CONFIDENTIAL THE INFORMATION CONTAINED IN THIS DRAWING IS THE SOLE PROPERTY OF BENDPAK INC. ANY REPRODUCTION IN PART OR AS A WHOLE WITHOUT THE WRITTEN PERMISSION OF BENDPAK INC. IS PROHIBITED. | | | | SCALE: 1:25 SHEET 1 OF 1 |

| REVISION | | | | |
|----------|-----------------------|------------|-----------|-------|
| REV | DESCRIPTION | DATE | EDITED BY | ECO# |
| T | UPDATED BOM REVISION | 12/01/2014 | TM | 00673 |
| U | UPDATED BOM REVISION | 05/14/2015 | TM | 00689 |
| V | UPDATED BOM REVISIONS | 11/12/2015 | TM | 00738 |



| ITEM NO | PART NUMBER | DESCRIPTION | QTY | REV |
|---------|-------------|---|-----|-----|
| 1 | 5600399 | XPR-12C/15/18C POWER SIDE POST WELDMENT | 1 | G |
| 2 | 5575113 | XPR-12/15/18 SHEAVE ASSEMBLY | 1 | D |
| 3 | 5620142 | XPR-12C/12FD/15/18C CABLE SHEAVE PIN WELDMENT | 1 | A |
| 4 | 5575112 | GP/PCL/XPR/PL-7000 SAFETY SHEAVE | 1 | C |
| 5 | 5565350 | GP/PCL/XPR/PL-7000 SAFETY SHEAVE SPACER | 1 | C |
| 6 | 5530030 | HHB M6 x 1 x 8 | 1 | - |
| 7 | 5530756 | HHB M6 x 1 x 25 | 1 | - |
| 8 | 5535357 | NUT M6 x 1.0 NL | 1 | - |
| 9 | 5520001 | RUBBER GROMMET, 3/4 I.D. | 1 | - |
| 10 | 5215269 | XPR-12C LIFT HEAD ASSEMBLY | 1 | N |
| 11 | 5502305 | CYLINDER ASSEMBLY Ø2.5 x 69 | 1 | E |
| 12 | 5701717 | XPR HEAVY DUTY CYLINDER STOPPER | 1 | A |

DO NOT SCALE DRAWING

DIMENSIONS ARE IN MM



NAME DATE

DRAWN TM 01/05/2010

CHECKED CA 02/18/2016

THIRD ANGLE PROJECTION



PROPRIETARY AND CONFIDENTIAL
THE INFORMATION CONTAINED IN THIS DRAWING IS
THE SOLE PROPERTY OF BENDPAK INC. ANY
REPRODUCTION IN PART OR AS A WHOLE WITHOUT
THE WRITTEN PERMISSION OF BENDPAK INC. IS
PROHIBITED.

BendPak 1645 LEMONWOOD DR.
SANTA PAULA, CA 93060

TITLE: XPR-12C POWER
SIDE POST ASSEMBLY

SIZE DWG. NO. REV

A 5215293 V

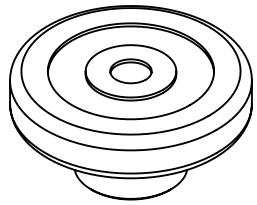
SCALE: 1:25

SHEET 1 OF 1

NOTE: UNLESS OTHERWISE SPECIFIED.

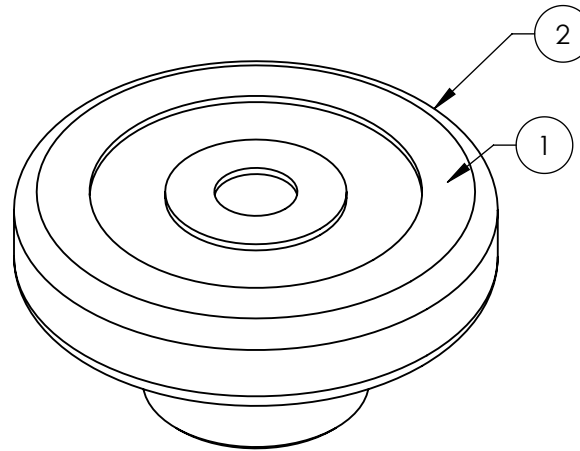
1. SEE SHIPPING INSTRUCTIONS FOR FINAL PACKAGING
2. ASSEMBLE ITEMS AS SHOWN

NEXT ASSEMBLY
5245138






ISOMETRIC VIEW
FOR REFERENCE ONLY
DO NOT SCALE

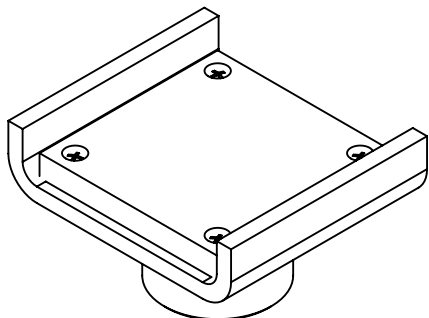
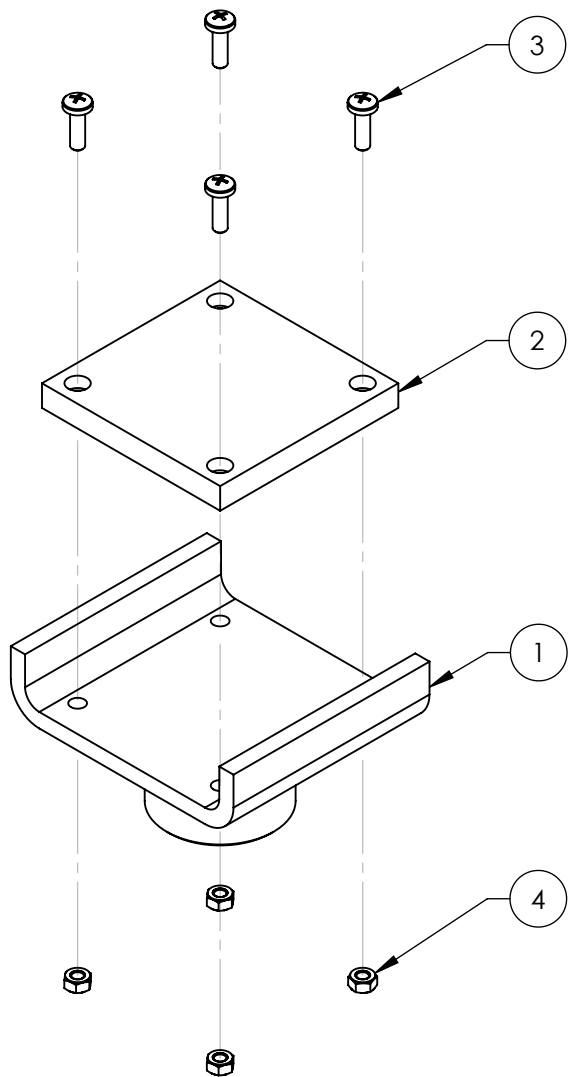
| REVISION | | | | |
|----------|--|------------|-----------|-------|
| REV | DESCRIPTION | DATE | EDITED BY | ECO# |
| A | PRODUCTION RELEASE, DERIVED FROM 5215507 | 06/26/2015 | JM | 00708 |
| A-001 | UPDATED NEXT ASSEMBLIES | 12/02/2015 | TM | 00738 |



NOTE: UNLESS OTHERWISE SPECIFIED.
1. SEE SHIPPING INSTRUCTIONS FOR FINAL PACKAGING
2. ASSEMBLE ITEMS AS SHOWN

| ITEM NO | | PART NUMBER | | DESCRIPTION | | QTY | REV |
|---|--|-------------|--|---|--|--------------|------------|
| 1 | | 5600999 | | ROUND LIFT PAD WELDMENT | | 1 | A |
| 2 | | 5715017 | | ROUND LIFT PAD ADAPTER RUBBER PAD | | 1 | D |
| DO NOT SCALE DRAWING | | | | NAME | | DATE | |
| DIMENSIONS ARE IN MM  | | | | DRAWN | | JM | 06/26/15 |
| | | | | CHECKED | | CA | 02/17/2016 |
| | | | | THIRD ANGLE PROJECTION  | | | |
| NEXT ASSEMBLY | | | | TITLE: ROUND LIFT PAD ADAPTER ASSEMBLY | | | |
| 5250038 | | | |  1645 LEMONWOOD DR. SANTA PAULA, CA 93060 | | | |
| 5250045 | | | | | | | |
| 5250046 | | | | | | | |
| 5250047 | | | | | | | |
| 5250080 | | | | | | | |
| 5250113 | | | | | | | |
| 5250041 | | | | | | | |
| 5250042 | | | | | | | |
| 5250043 | | | | | | | |
| 5250044 | | | | | | | |
| PROPRIETARY AND CONFIDENTIAL THE INFORMATION CONTAINED IN THIS DRAWING IS THE SOLE PROPERTY OF BENDPAK INC. ANY REPRODUCTION IN PART OR AS A WHOLE WITHOUT THE WRITTEN PERMISSION OF BENDPAK INC. IS PROHIBITED. | | | | SIZE DWG. NO. | | REV | |
| | | | | A 5215701 | | A | |
| SCALE: 1:2 | | | | | | SHEET 1 OF 1 | |

| REVISION | | | | |
|----------|--|------------|-----------|-------|
| REV | DESCRIPTION | DATE | EDITED BY | ECO# |
| A | PRODUCTION RELEASE, DERIVED FROM 5215506 | 06/24/15 | JM | 00708 |
| B | UPDATED TITLE TO REFLECT MARKETING, UPDATED BOM REVISION AND NEXT ASSEMBLIES | 12/03/2015 | TM | 00738 |



ISOMETRIC VIEW
FOR REFERENCE ONLY
DO NOT SCALE

| ITEM NO | PART NUMBER | DESCRIPTION | QTY | REV |
|---------|-------------|----------------------------------|-----|-----|
| 1 | 5601000 | CRADLE LIFT PAD WELDMENT | 1 | A |
| 2 | 5715020 | CRADLE LIFT PAD LARGE RUBBER PAD | 1 | B |
| 3 | 5530022 | BPHS M6 x 1 x 20 ZPL | 4 | -- |
| 4 | 5535357 | NUT M6 x 1.0 NL | 4 | -- |

DO NOT SCALE DRAWING

NAME DATE

DRAWN JM 06/24/2015

CHECKED CA 02/17/2016

BendPak 1645 LEMONWOOD DR.
SANTA PAULA, CA 93060

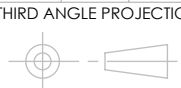
TITLE: CRADLE LIFT PAD
LARGE ADAPTER
ASSEMBLY

SIZE DWG. NO. REV
A 5215702 B

SCALE: 1:2 SHEET 1 OF 1

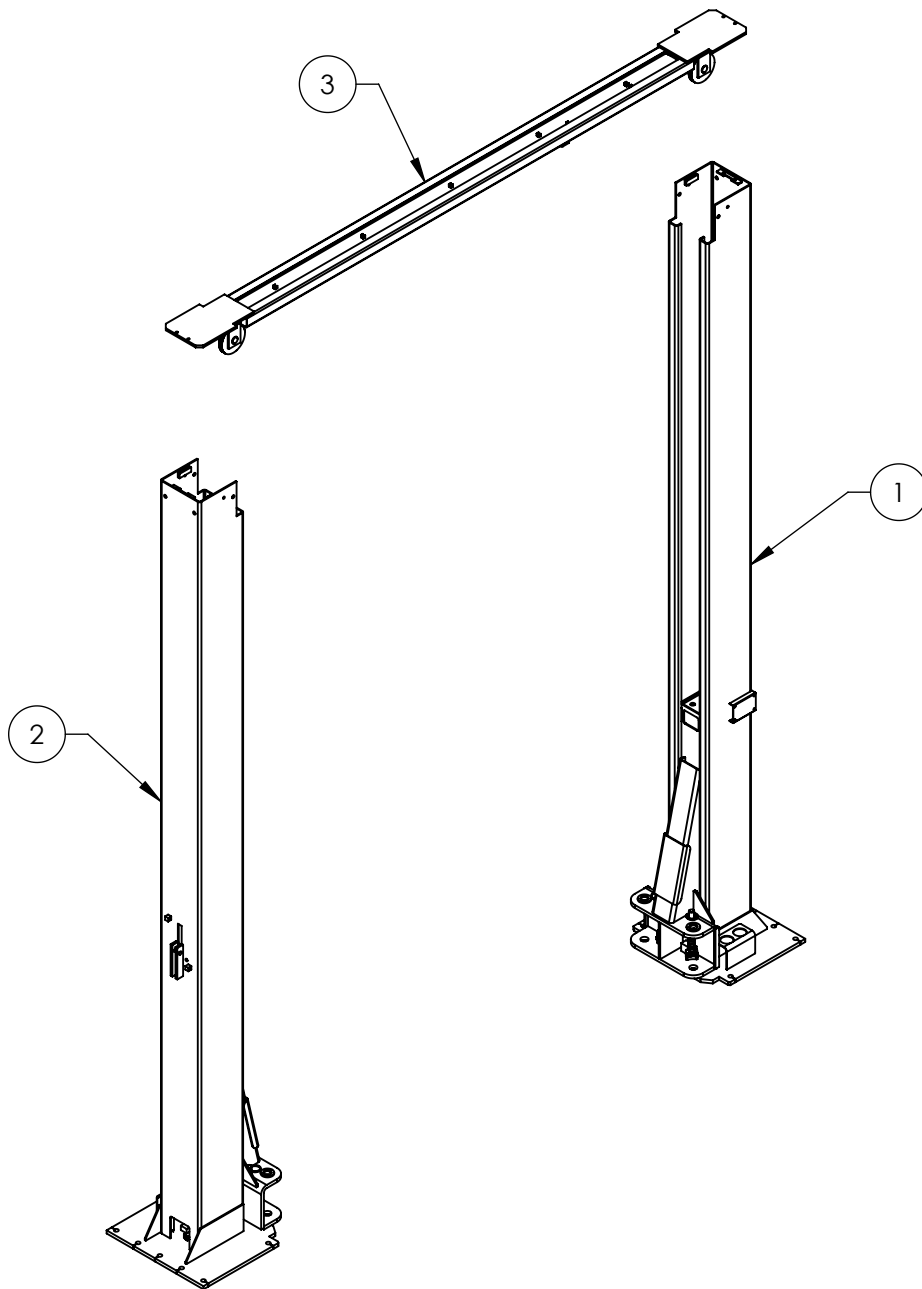
| NEXT ASSEMBLY |
|---------------|
| 5250041 |
| 5250042 |
| 5250043 |
| 5250044 |
| 5250045 |
| 5250046 |
| 5250047 |

DIMENSIONS ARE IN MM





PROPRIETARY AND CONFIDENTIAL
THE INFORMATION CONTAINED IN THIS DRAWING IS
THE SOLE PROPERTY OF BENDPAK INC. ANY
REPRODUCTION IN PART OR AS A WHOLE WITHOUT
THE WRITTEN PERMISSION OF BENDPAK INC. IS
PROHIBITED.

NOTE: UNLESS OTHERWISE SPECIFIED.
1. SEE SHIPPING INSTRUCTIONS FOR FINAL PACKAGING
2. ASSEMBLE ITEMS AS SHOWN



| REVISION | | | | |
|----------|---|------------|-----------|-------|
| REV | DESCRIPTION | DATE | EDITED BY | ECO# |
| U | UPDATED BOM REVISIONS | 12/01/2014 | TM | 00673 |
| V | UPDATED BOM REVISIONS | 05/12/2015 | TM | 00689 |
| W | UPDATED BOM REVISIONS AND NEXT ASSEMBLIES | 12/08/2015 | TM | 00738 |

| ITEM NO | PART NUMBER | DESCRIPTION | QTY | REV |
|---------|-------------|-----------------------------------|-----|-----|
| 1 | 5215293 | XPR-12C POWER SIDE POST ASSEMBLY | 1 | V |
| 2 | 5215292 | XPR-12C OFF SIDE POST ASSEMBLY | 1 | V |
| 3 | 5210031 | XPR-12/15/18C TOP TROUGH ASSEMBLY | 1 | K |

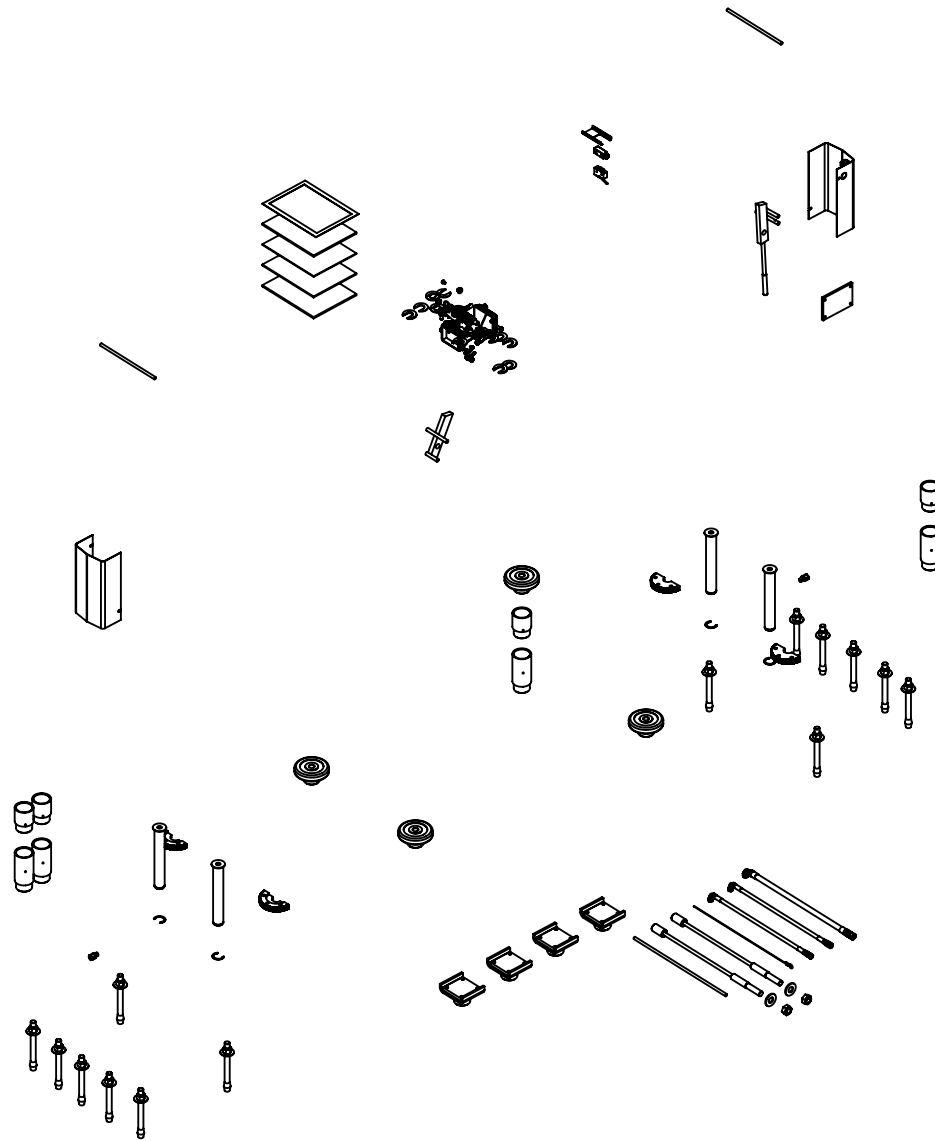
| | | | | | |
|----------------------|--|---|------------|---|--|
| DO NOT SCALE DRAWING | | NAME | DATE | <div> BendPak. <small>WORKING AUTOMAKE SERVICE SOURCE</small></div> <div>1645 LEMONWOOD DR. SANTA PAULA, CA 93060</div> | |
| DRAWN | | TM | 01/29/2010 | | |
| CHECKED | | CA | 02/23/2016 | | |
| DIMENSIONS ARE IN MM | | THIRD ANGLE PROJECTION | | TITLE: XPR-12C LIFT SUPERSTRUCTURE | |
| | |  | | SIZE DWG. NO. A 5245138 | |
| | | <p>PROPRIETARY AND CONFIDENTIAL</p> <p>THE INFORMATION CONTAINED IN THIS DRAWING IS THE SOLE PROPERTY OF BENDPAK INC. ANY REPRODUCTION IN PART OR AS A WHOLE WITHOUT THE WRITTEN PERMISSION OF BENDPAK INC. IS PROHIBITED.</p> | | REV W | |
| SCALE: 1:35 | | | | SHEET 1 OF 1 | |

NOTE: UNLESS OTHERWISE SPECIFIED.

1. SEE SHIPPING INSTRUCTIONS FOR FINAL PACKAGING

| |
|---------------|
| NEXT ASSEMBLY |
| 5260563 |
| 5260565 |
| 5260567 |
| 5260569 |

| REVISION | | | | |
|----------|--|------------|-----------|-------|
| REV | DESCRIPTION | DATE | EDITED BY | ECO# |
| A | PRODUCTION RELEASE, DERIVED FROM 5250041 | 12/15/2015 | TM | 00738 |
| B | UPDATED BOM REVISIONS | 03/23/2016 | TM | 00750 |



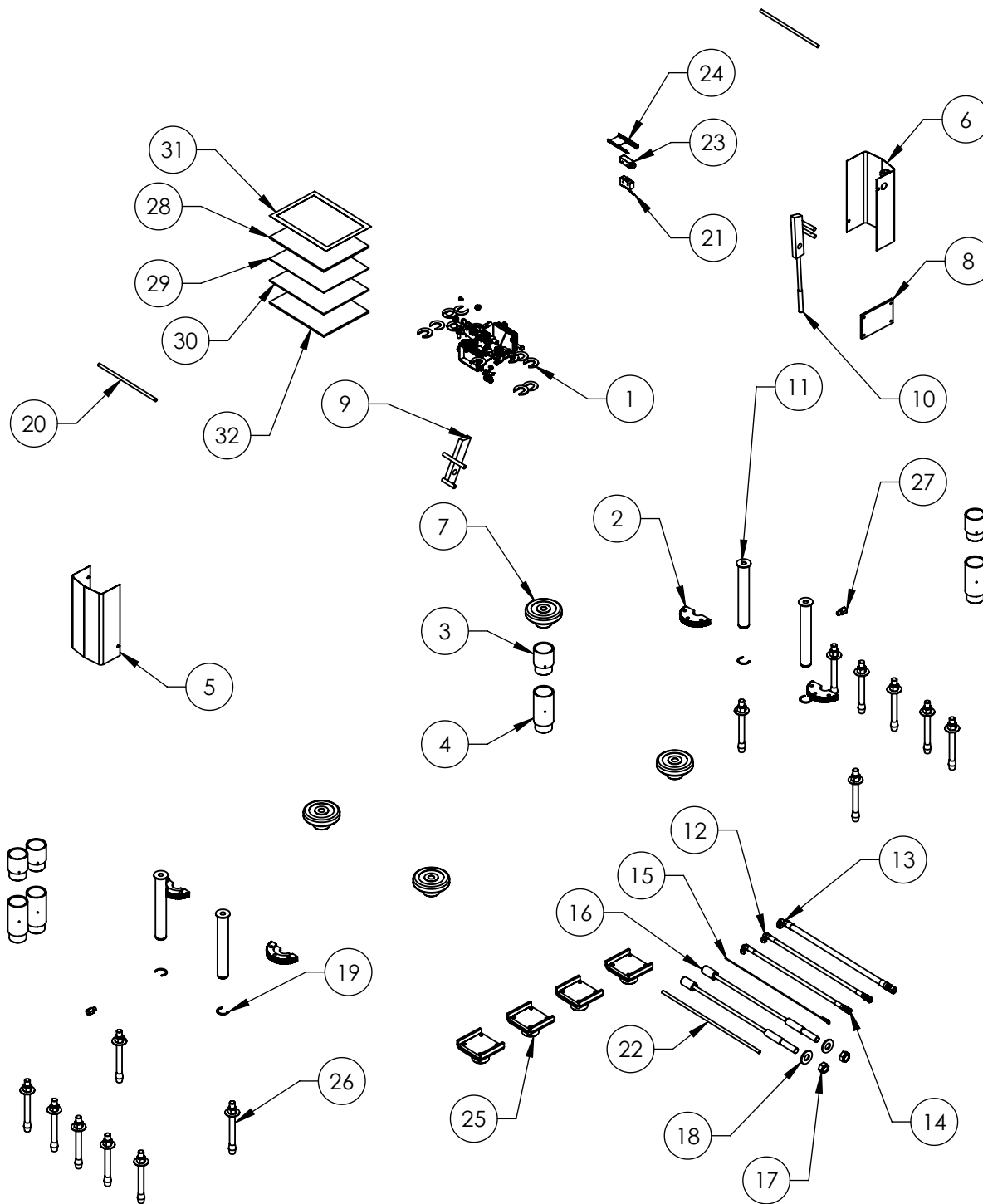
| ITEM NO | PART NUMBER | DESCRIPTION | QTY | REV |
|---------|-------------|---|---------|-----|
| 1 | 5174518 | XPR CLEARFLOOR PARTS BAG | 1 | J |
| 2 | 5736605 | XPR-12 BOLT ON ARM RESTRAINT GEAR | 4 | E |
| 3 | 5746192 | ARM ADAPTER, MEDIUM | 4 | D |
| 4 | 5746193 | ARM ADAPTER, LONG | 4 | C |
| 5 | 5210009 | XPR-9D/10/12/12FD/15/18C OFF SIDE SAFETY COVER | 1 | E |
| 6 | 5600163 | XPR CLEARFLOOR POWER SIDE SAFETY COVER | 1 | E |
| 7 | 5215701 | ROUND LIFT PAD ADAPTER ASSEMBLY | 4 | A |
| 8 | 5715003 | POWER UNIT VIBRATION DAMPENER | 1 | B |
| 9 | 5210010 | XPR OFF SIDE SAFETY WELDMENT | 1 | E |
| 10 | 5210007 | XPR POWER SIDE SAFETY ASSEMBLY | 1 | F |
| 11 | 5505346 | XPR-12C/ED LIFT HEAD PIN WELDMENT | 4 | B |
| 12 | 5570150 | XPR-12C/15/18C HYDRAULIC HOSE ASSY Ø6.35 x 9611mm SB | 1 | D |
| 13 | 5570017 | XPR HYDRAULIC HOSE ASSY Ø10 x 1219mm SB | 1 | C |
| 14 | 5570832 | XPR CLEARFLOOR HYDRAULIC HOSE ASSY Ø6.35 x 2299mm SB | 1 | E |
| 15 | 5595125 | XPR-12C/15/18C Ø2.4mm x 8900 SAFETY CABLE | 1 | B |
| 16 | 5595922 | XPR-12C/15/18C/ XPR-12C-LWB CABLE ASSY Ø12 x 10640mm ST | 2 | A |
| 17 | 5535011 | NUT M22 x 2.5 NL | 2 | - |
| 18 | 5545345 | WASHER M22 x 50mm FLAT | 2 | - |
| 19 | 5540281 | C RING Ø38mm OD 5103-150 | 4 | - |
| 20 | 5746166 | DOUBLE THREADED ROD M10 x 1.5 x 295 | 2 | B |
| 21 | 5525150 | SPDT MICRO SWITCH:25A@125VAC | 1 | - |
| 22 | 5520116 | 14-4 SJO UL 62 CABLE 300vac | 4275mm* | - |
| 23 | 5525112 | MICRO SWITCH COVER-5PA2 | 1 | - |
| 24 | 5716634 | XPR MICROSWITCH COVER, PLASTIC | 1 | A |
| 25 | 5215702 | CRADLE LIFT PAD LARGE ADAPTER ASSEMBLY | 4 | B |
| 26 | 5530308 | AB 3/4" x 7" | 14 | - |
| 27 | 5550112 | FTG NPL -04 NPT x -04 F NPT | 2 | - |
| 28 | 5900280 | ALI/LP FRAME ENGAGING LIFTS GUIDE | 1 | - |
| 29 | 5900152 | ALIGN OIM OPERATION INSPECTION & MAINTENANCE | 1 | - |
| 30 | 5900147 | SAFETY MANUAL ALI / SM 93-1 | 1 | - |
| 31 | 5905151 | SAFETY TIPS CARD ALI-ST 90 | 1 | - |
| 32 | 5900370 | XPR-12CL-18CL INSTALLATION MANUAL | 1 | - |

NOTE: UNLESS OTHERWISE SPECIFIED.

1. INSERT PARTS BAG INTO PARTS BOX FOR SHIPMENT
2. SEE SHIPPING INSTRUCTIONS FOR FINAL PACKAGING
3. THREAD 5535011 ONTO CABLES WITH 5545345 FOR SHIPMENT
4. FOR 5220116 SPECIFICATIONS REFER TO PART SPECIFICATION FORM
5. (*)5520116 QTY FOR REFERENCE ONLY

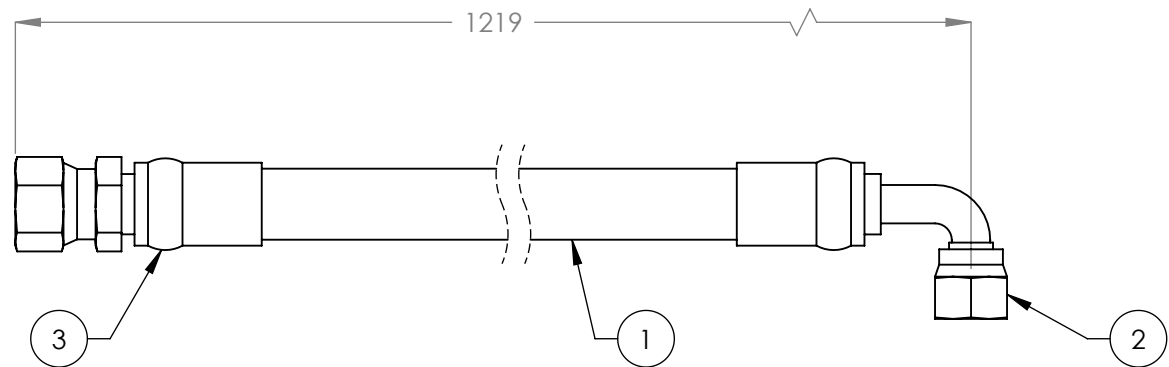
| |
|---------------|
| NEXT ASSEMBLY |
| 5260567 |
| 5260569 |

| | | | |
|---|------------------------------------|-----------------------------|--|
| DO NOT SCALE DRAWING | NAME | DATE | BendPak 1645 LEMONWOOD DR. SANTA PAULA, CA 93060 |
| DIMENSIONS ARE IN MM | DRAWN | TM 12/15/2015 | |
| | CHECKED | | |
| THIRD ANGLE PROJECTION | TITLE: XPR-12CL/12CL-LWB PARTS BOX | | |
| | SIZE DWG. NO. A 5250041 | | |
| | REV B | | |
| PROPRIETARY AND CONFIDENTIAL THE INFORMATION CONTAINED IN THIS DRAWING IS THE SOLE PROPERTY OF BENDPAK INC. ANY REPRODUCTION IN PART OR AS A WHOLE WITHOUT THE WRITTEN PERMISSION OF BENDPAK INC. IS PROHIBITED. | | SCALE: 1:28 SHEET 1 OF 2 | |





| | | | |
|---|-------------------------|---|--------------|
|  BendPak. PROVIDING AUTOMOTIVE SERVICE SOLUTIONS | | 1645 LEMONWOOD DR. SANTA PAULA, CA 93060 | |
| TITLE: XPR-12CL/12CL-LWB PARTS BOX | | | |
| SIZE A | DWG. NO. 5250041 | | REV B |
| SCALE: 1:22 | | | SHEET 2 OF 2 |

| REVISION | | | | |
|----------|---|------------|-----------|-------|
| REV | DESCRIPTION | DATE | EDITED BY | ECO# |
| A | PRODUCTION RELEASE, DERIVED FROM 800399 | 08/27/2009 | TM | 00293 |
| A-001 | UPDATED NEXT ASSEMBLY | 09/08/2010 | TM | 00396 |
| A-002 | UPDATED NEXT ASSEMBLY | 04/18/2011 | MT | 00454 |
| B | UPDATED TITLE TO REFLECT WHERE USED, UPDATED NEXT ASSEMBLIES | 01/12/2012 | TM | 00490 |
| C | UPDATED TITLE TO REFLECT WHERE USED, UPDATED NEXT ASSEMBLIES | 06/21/2013 | TM | 00605 |
| C-001 | UPDATED NEXT ASSEMBLIES | 10/16/2014 | TM | 00663 |
| C-002 | UPDATED NEXT ASSEMBLIES | 11/24/2015 | TM | 00738 |



| ITEM NO | PART NUMBER | DESCRIPTION | QTY | REV |
|---------|-------------|-----------------------------|---------|-----|
| 1 | 5570116 | Ø10 ID HYDRAULIC HOSE | 1144mm* | - |
| 2 | 5550337 | FTG ELB -06 CRIMP x -06 JIC | 1 | - |
| 3 | 5550336 | FTG NPL -06 CRIMP x -06 JIC | 1 | - |

| NEXT ASSEMBLY |
|---------------|
| 5250039 |
| 5250040 |
| 5250041 |
| 5250042 |
| 5250043 |
| 5250044 |
| 5250045 |
| 5250046 |
| 5250047 |
| 5250048 |
| 5250049 |

| | | | | | | |
|---|--|--|------|--|--------------|------------|
| DO NOT SCALE DRAWING | | NAME | DATE | <div> BendPak. <small>MOVING AUTOMOTIVE SERVICES</small></div> <div>1645 LEMONWOOD DR. SANTA PAULA, CA 93060</div> | | |
| DIMENSIONS ARE IN MM TOLERANCES: 0. = ±1.5 0.0 = ±1.0 0.00 = ±0.25 0.000 = ±0.13 ANGULAR: MACH ±2° SURFACE FINISH 1.6 ISO Ra µm FOR MACHINED SURFACES UNLESS OTHERWISE SPECIFIED | | DRAWN | TM | | | 08/27/2009 |
| | | CHECKED | CA | | | 02/22/2016 |
| | | THIRD ANGLE PROJECTION | | TITLE: | | |
| | |  | | XPR HYDRAULIC HOSE ASSY Ø10 x 1219mm SB | | |
| | | <div>PROPRIETARY AND CONFIDENTIAL THE INFORMATION CONTAINED IN THIS DRAWING IS THE SOLE PROPERTY OF BENDPAK INC. ANY REPRODUCTION IN PART OR AS A WHOLE WITHOUT THE WRITTEN PERMISSION OF BENDPAK INC. IS PROHIBITED.</div> | | SIZE | DWG. NO. | REV |
| | | | | A | 5570017 | C |
| | | | | SCALE: 1:2 | | |
| | | | | | SHEET 1 OF 1 | |

NOTE: UNLESS OTHERWISE SPECIFIED.

- FOR ITEM 1 SPECIFICATIONS REFER TO PART SPECIFICATION FORM
- (*)ITEM 1 QTY FOR REFERENCE ONLY

PART SPECIFICATION FORM

| | |
|-------------------------|--------------------------------|
| BENDPAK Number: | 5570129 |
| MRP Description: | 1/4" HYDRAULIC HOSE 31CL-0400X |
| Date: | 11/10/2015 |
| ECO : | 00734 |

1. Engineering Specification

Application:

1/4" HYDRAULIC HOSE

Detailed Description:

ONE or TWO BRAID STEEL WIRE HYDRAULIC HOSE

SIZE: 1/4" / 6.3mm I.D.
0.53" / 13.4mm O.D.

SPECS: 3000PSI OR 207 BAR WORKING PRESSURE
12000PSI OR 827 BAR MINIMUM BURST PRESSURE
2" / 50mm MIN BEND RADIUS

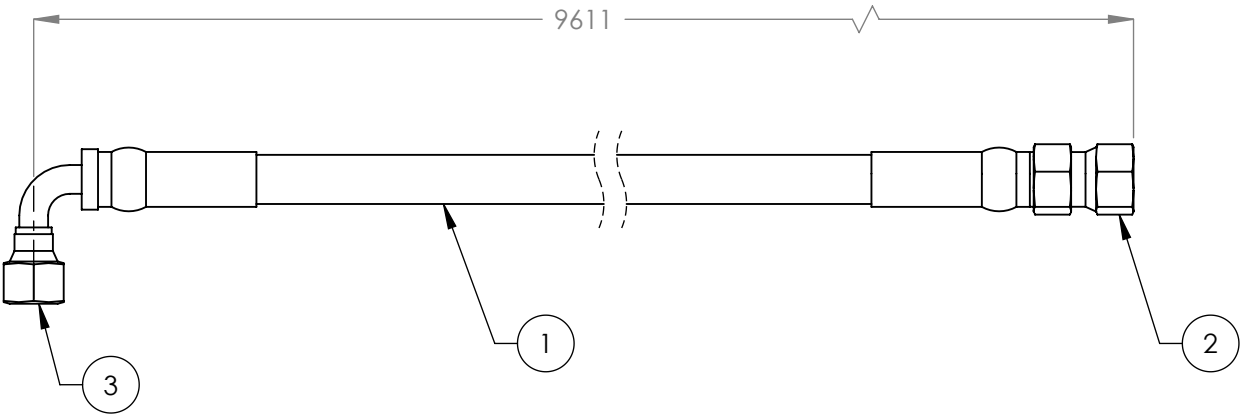
COLOR: BLACK





2. Vendor Information

| Approved Vendor | Vendor Part # | Contact # | Preferred Vendor |
|--|---------------|-------------|------------------|
| 1) PARKER | 387-4 | 02283962772 | |
| 2) | | | |
| OR BENDPAK ENGINEERING APPROVED EQUIVALENT | | | |

| REVISION | | | | |
|----------|---|------------|-----------|-------|
| REV | DESCRIPTION | DATE | EDITED BY | ECO# |
| B | UPDATED NEXT ASSEMBLY AND ADDED FITTING CALL OUT IN TITLE | 01/11/2010 | TM | 00293 |
| C | UPDATED TITLE TO REFLECT WHERE USED | 02/15/2012 | TM | 00490 |
| C-001 | UPDATED NEXT ASSEMBLIES | 07/02/2013 | TM | 00605 |
| D | REPLACED 5570110 WITH 5570129 | 12/01/2014 | TM | 00673 |
| D-001 | UPDATED NEXT ASSEMBLIES | 12/16/2015 | TM | 00738 |



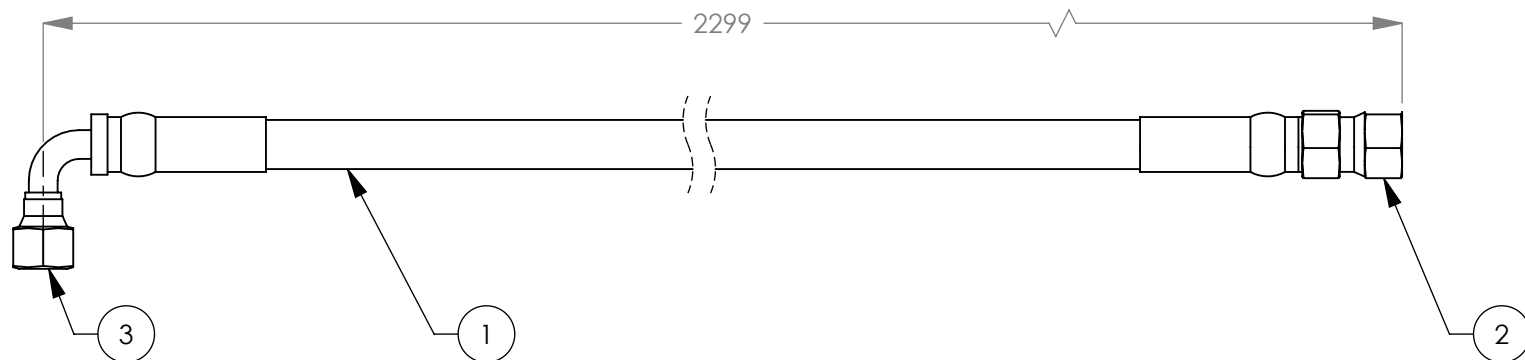
| ITEM NO | PART NUMBER | DESCRIPTION | QTY | REV |
|---------|-------------|------------------------------|---------|-----|
| 1 | 5570129 | Ø6.4 ID HYDRAULIC HOSE | 9551mm* | -- |
| 2 | 5550325 | FTG NPL Ø1/4 CRIMP x -04 JIC | 1 | -- |
| 3 | 5550345 | FTG ELB Ø1/4 CRIMP x -04 JIC | 1 | -- |

| | | | | | | |
|---|--|---|------|---|--|------------|
| DO NOT SCALE DRAWING | | NAME | DATE |  1645 LEMONWOOD DR. SANTA PAULA, CA 93060 | | |
| | | DRAWN | GJ | | | 10/20/2008 |
| | | CHECKED | CA | | | 02/22/2016 |
| DIMENSIONS ARE IN MM TOLERANCES: 0. = ±1.5 0.0 = ±1.0 0.00 = ±0.25 0.000 = ±0.13 | | THIRD ANGLE PROJECTION | | TITLE: XPR-12C/15/18C HYDRAULIC HOSE ASSY Ø6.35 x 9611mm SB | | |
| ANGULAR: MACH±2° SURFACE FINISH 1.6 ISO Ra µm FOR MACHINED SURFACES UNLESS OTHERWISE SPECIFIED | |  | | SIZE DWG. NO. A 5570150 | | |
| | | PROPRIETARY AND CONFIDENTIAL THE INFORMATION CONTAINED IN THIS DRAWING IS THE SOLE PROPERTY OF BENDPAK INC. ANY REPRODUCTION IN PART OR AS A WHOLE WITHOUT THE WRITTEN PERMISSION OF BENDPAK INC. IS PROHIBITED. | | REV D | | |
| | | | | SCALE: 1:2 | | |
| | | | | SHEET 1 OF 1 | | |

NOTE: UNLESS OTHERWISE SPECIFIED.

- FOR ITEM 1 SPECIFICATIONS REFER TO PART SPECIFICATION FORM
- (*)ITEM 1 QTY FOR REFERENCE ONLY

| REVISION | | DATE | EDITED BY | ECO# |
|----------|---|------------|-----------|-------|
| REV | DESCRIPTION | | | |
| C | UPDATED TITLE TO REFLECT WHERE USED, UPDATED NEXT ASSEMBLIES | 02/07/2012 | TM | 00490 |
| D | UPDATED TITLE TO REFLECT WHERE USED, UPDATED NEXT ASSEMBLIES | 06/27/2017 | TM | 00605 |
| D-001 | UPDATED NEXT ASSEMBLIES | 10/16/2014 | TM | 00663 |
| E | REPLACED 5570110 WITH 5570129 TO REFLECT INVENTORY | 11/20/2014 | TM | 00673 |
| E-001 | UPDATED NEXT ASSEMBLIES | 11/24/2015 | TM | 00738 |





NOTE: UNLESS OTHERWISE SPECIFIED.

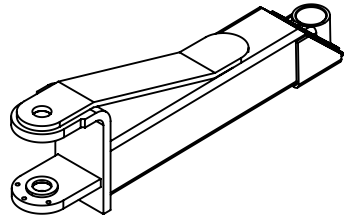
- FOR ITEM 1 SPECIFICATIONS REFER TO PART SPECIFICATION FORM
- (*)ITEM 1 QTY FOR REFERENCE ONLY

| ITEM NO | PART NUMBER | DESCRIPTION | QTY | REV |
|---------|-------------|------------------------------|---------|-----|
| 1 | 5570129 | Ø6.4 ID HYDRAULIC HOSE | 2249mm* | -- |
| 2 | 5550325 | FTG NPL Ø1/4 CRIMP x -04 JIC | 1 | -- |
| 3 | 5550345 | FTG ELB Ø1/4 CRIMP x -04 JIC | 1 | -- |

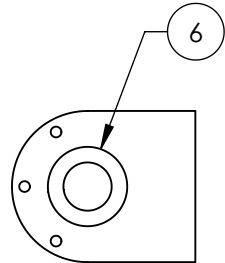
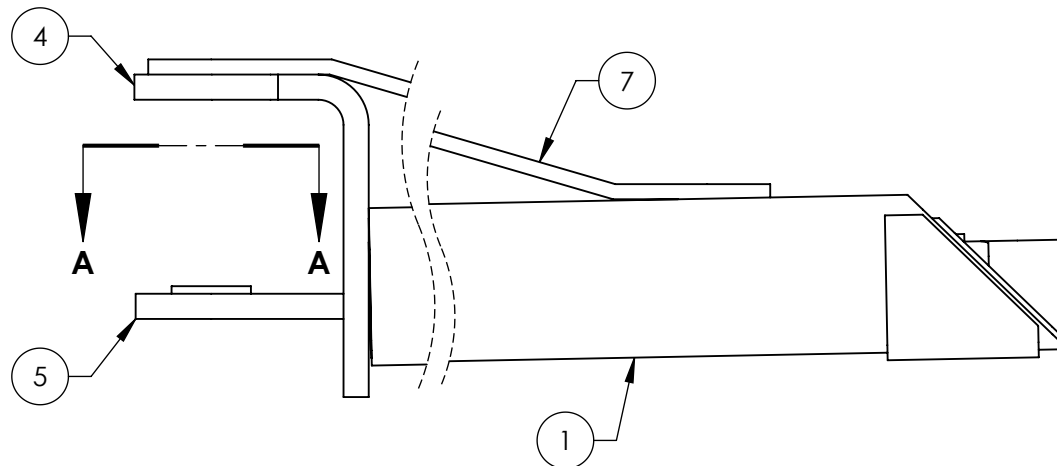
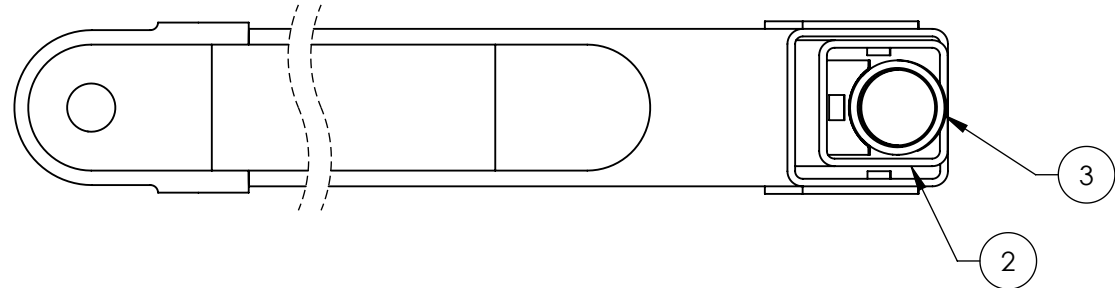
| NEXT ASSEMBLY |
|---------------|
| 5250039 |
| 5250040 |
| 5250041 |
| 5250042 |
| 5250043 |
| 5250044 |
| 5250045 |
| 5250046 |
| 5250047 |
| 5250048 |
| 5250049 |

| | | | |
|---|---------|------|--|
| DO NOT SCALE DRAWING | NAME | DATE |  BendPak <small>HYDRAULIC AUTOMOTIVE SERVICE EQUIPMENT</small> 1645 LEMONWOOD DR. SANTA PAULA, CA 93060 |
| DIMENSIONS ARE IN MM TOLERANCES: 0. = ±1.5 0.0 = ±1.0 0.00 = ±0.25 0.000 = ±0.13 ANGULAR: MACH±2° SURFACE FINISH 1.6 ISO Ra µm FOR MACHINED SURFACES UNLESS OTHERWISE SPECIFIED | DRAWN | GJ | 10/13/2008 |
| | CHECKED | CA | 02/22/2016 |
| THIRD ANGLE PROJECTION | | | |
|  | | | |
| PROPRIETARY AND CONFIDENTIAL THE INFORMATION CONTAINED IN THIS DRAWING IS THE SOLE PROPERTY OF BENDPAK INC. ANY REPRODUCTION IN PART OR AS A WHOLE WITHOUT THE WRITTEN PERMISSION OF BENDPAK INC. IS PROHIBITED. | | | |
| TITLE: | | | XPR CLEARFLOOR HYDRAULIC HOSE ASSY Ø6.35 x 2299mm SB |
| SIZE DWG. NO. | | | A 5570832 |
| REV | | | E |
| SCALE: 1:2 | | | SHEET 1 OF 1 |

| REVISION | | | | |
|----------|---|------------|-----------|-------|
| REV | DESCRIPTION | DATE | EDITED BY | ECO# |
| B | UPDATED BOM REVISION | 09/22/2015 | TM | 00729 |
| C | UPDATED BOM REVISION | 11/25/2015 | TM | 00738 |
| D | UPDATED TITLE TO REFLECT WHERE USED, UPDATED BOM REVISION | 02/19/2016 | TM | 00750 |





ISOMETRIC VIEW
FOR REFERENCE ONLY
DO NOT SCALE



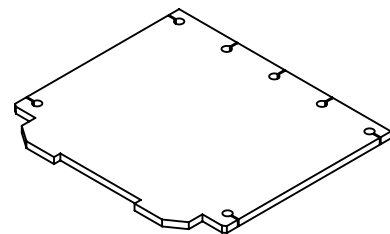
SECTION A-A

| ITEM NO | PART NUMBER | DESCRIPTION | QTY | REV |
|---------|-------------|--|-----|-----|
| 1 | 5620355 | XPR-12 TRIPLE ARM OUTER SQUARE TUBE WELDMENT 668mm | 1 | D |
| 2 | 5620356 | XPR-12 TRIPLE ARM MIDDLE SQUARE TUBE WELDMENT (668mm) | 1 | D |
| 3 | 5620323 | XPR-12 TRIPLE ARM INNER SQUARE TUBE WELDMENT (667.5mm) | 1 | C |
| 4 | 5701240 | XPR-12 ARM EAR | 1 | C |
| 5 | 5701070 | XPR-12C/FD BOLT ON ARM EAR | 1 | C |
| 6 | 5746564 | XPR-9/10/12 REINFORCING WASHER | 1 | E |
| 7 | 5736284 | XPR-12 ARM SUPPORT | 1 | D |

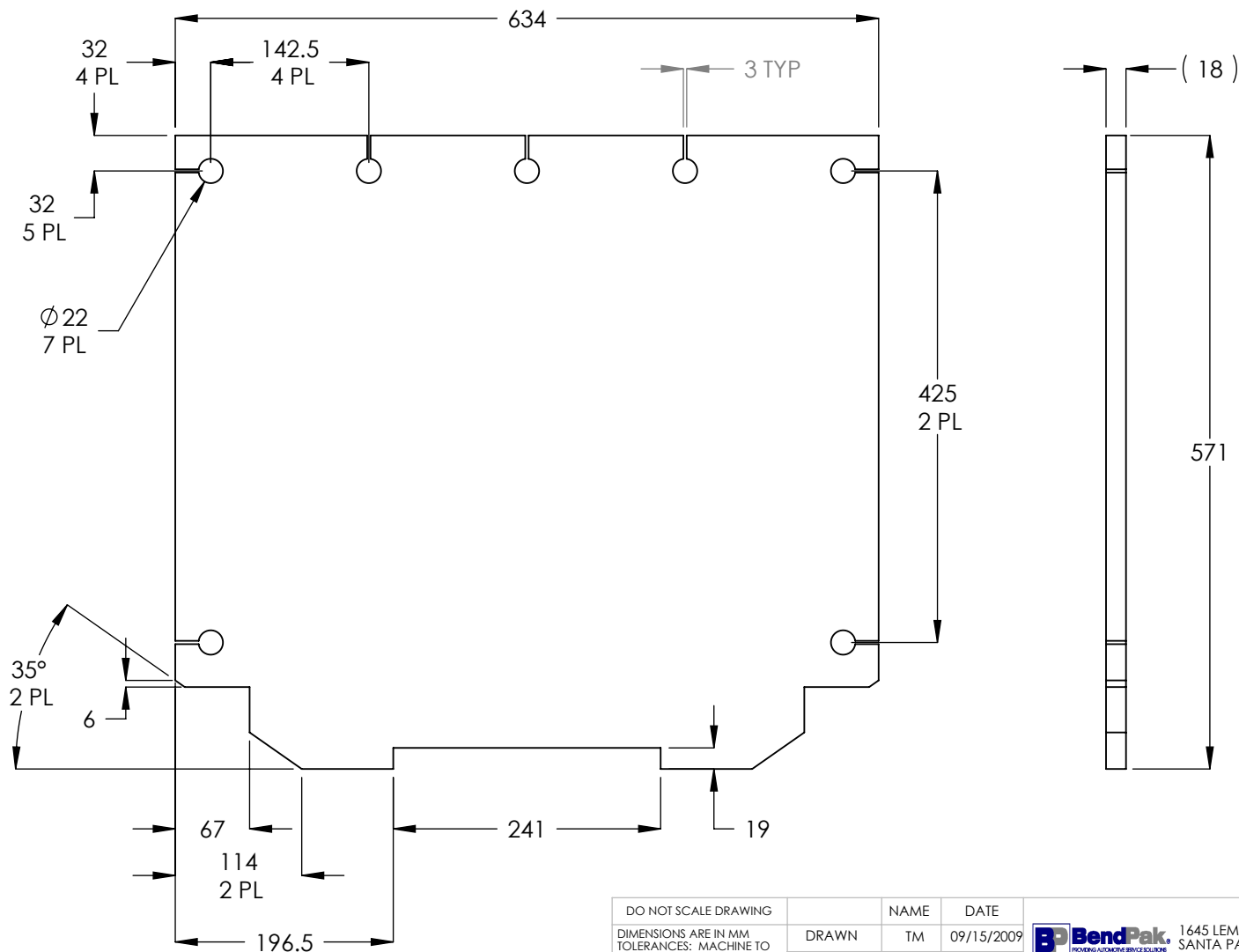
| | | | | | | | | |
|---|--|--|------|---|---|------------|-----|--|
| DO NOT SCALE DRAWING | | NAME | DATE | <div> BendPak POWERING AUTOMOTIVE SERVICE SOLUTIONS</div> <div>1645 LEMONWOOD DR. SANTA PAULA, CA 93060</div> | | | | |
| DIMENSIONS ARE IN MM TOLERANCES: MACHINE TO 0. = ±1.5 0.0 = ±0.5 0.00 = ±0.13 ANGULAR: MACHINE TO 0. = ±1/2° SURFACE FINISH 1.6 ISO Ra µm FOR MACHINED SURFACES UNLESS OTHERWISE SPECIFIED | | DRAWN | JM | | | 06/23/2015 | | |
| | | CHECKED | | | | | | |
| | | THIRD ANGLE PROJECTION | | | TITLE: | | | |
| | |  | | | XPR-12CL/FDL TRIPLE TELESCOPING ARM WELDMENT | | | |
| Y | | <div>PROPRIETARY AND CONFIDENTIAL</div> <div>THE INFORMATION CONTAINED IN THIS DRAWING IS THE SOLE PROPERTY OF BENDPAK INC. ANY REPRODUCTION IN PART OR AS A WHOLE WITHOUT THE WRITTEN PERMISSION OF BENDPAK INC. IS PROHIBITED.</div> | | | SIZE DWG. NO. | | REV | |
| | | | | | A 5600993 | | D | |
| | | SCALE: 1:6 | | | SHEET 1 OF 2 | | | |

NOTE: UNLESS OTHERWISE SPECIFIED.




- BREAK AND DEBURR ALL SHARP EDGES 0.3mm
- REMOVE ALL WELD SPLATTER
- DIMENSIONS SHOWN ARE AFTER PAINTING
- PAINT BENDPAK YELLOW
- 5620356 & 5620323 MUST SLIDE FREELY



ISOMETRIC VIEW
FOR REFERENCE ONLY
DO NOT SCALE



| REVISION | | | | |
|----------|---|------------|-----------|-------|
| REV | DESCRIPTION | DATE | EDITED BY | ECO# |
| A | PRODUCTION RELEASE, DERIVED FROM 800725 | 09/16/2009 | TM | 00293 |
| B | ADDED RECTANGULAR CUTS | 03/21/2011 | TM | 00449 |

| | | | | | |
|---|--|---|---------------|--|-----|
| DO NOT SCALE DRAWING | | NAME | DATE |  BendPak 1645 LEMONWOOD DR. SANTA PAULA, CA 93060 | |
| DIMENSIONS ARE IN MM TOLERANCES: MACHINE TO 0. = ±1.5 0.0 = ±0.5 0.00 = ±0.13 | | DRAWN | TM 09/15/2009 | | |
| ANGULAR: MACHINE TO 0. = ±½° | | CHECKED | MT 03/30/2011 | | |
| SURFACE FINISH 1.6 ISO Ra µm FOR MACHINED SURFACES UNLESS OTHERWISE SPECIFIED | | THIRD ANGLE PROJECTION | | TITLE: | |
| MATERIAL: HR ASTM A36 OR Q235 GB/T 700 | |  | | XPR-12C/FD/15/18C BASE PLATE | |
| SIZE: 18mm THICK | |  | | SIZE DWG. NO. | REV |
| THE INFORMATION CONTAINED IN THIS DRAWING IS THE SOLE PROPERTY OF BENDPAK INC. ANY REPRODUCTION IN PART OR AS A WHOLE WITHOUT THE WRITTEN PERMISSION OF BENDPAK INC. IS PROHIBITED. | | A 5736526 | | B | |
| | | SCALE: 1:6 | | SHEET 1 OF 1 | |

NOTE: UNLESS OTHERWISE SPECIFIED.

- BREAK AND DEBURR ALL SHARP EDGES 0.3mm

| |
|---------------|
| NEXT ASSEMBLY |
| 5620358 |
| 5620372 |
| 5620373 |

PART SPECIFICATION FORM

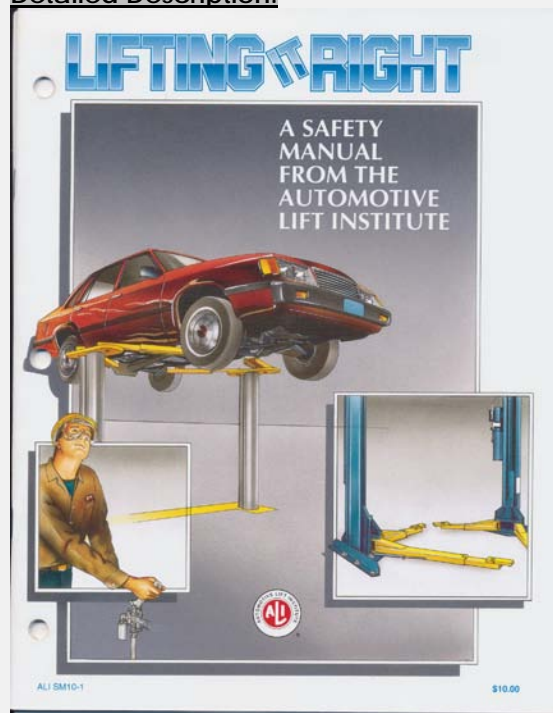
| | |
|-------------------------|-----------------------------|
| BENDPAK Number: | 5900147 |
| MRP Description: | SAFETY MANUAL ALI / SM 93-1 |
| Date: | 12/28/2010 |
| ECO : | 00431 |

1. Engineering Specification

Application:

ALI SAFETY MANUAL

Detailed Description:



2. Vendor Information

| Approved Vendor | Vendor Part # | Contact # | Preferred Vendor |
|-----------------|---------------|-----------|------------------|
| 1) | | | |

PART SPECIFICATION FORM

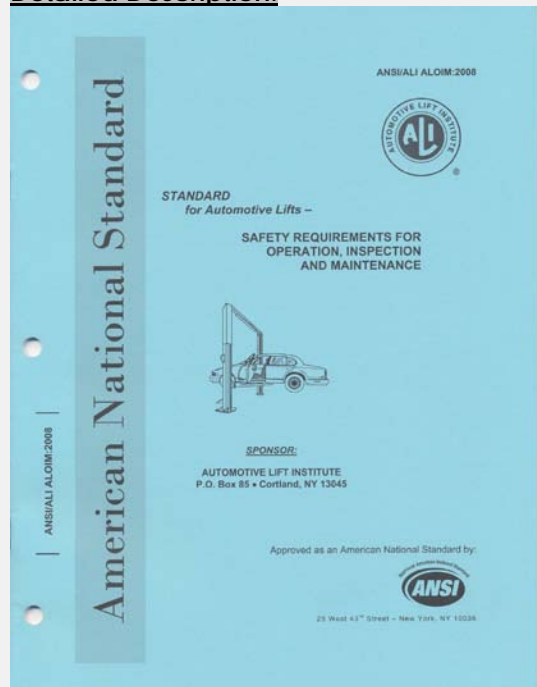
| | |
|-------------------------|--|
| BENDPAK Number: | 5900152 |
| MRP Description: | ALIGN OIM OPERATION INSPECTION & MAINTENANCE |
| Date: | 12/28/2010 |
| ECO : | 00431 |

1. Engineering Specification

Application:

ALI OPERATION INSPECTION & MAINTENANCE MANUAL

Detailed Description:



2. Vendor Information

| Approved Vendor | Vendor Part # | Contact # | Preferred Vendor |
|-----------------|---------------|-----------|------------------|
| 1) | | | |

PART SPECIFICATION FORM

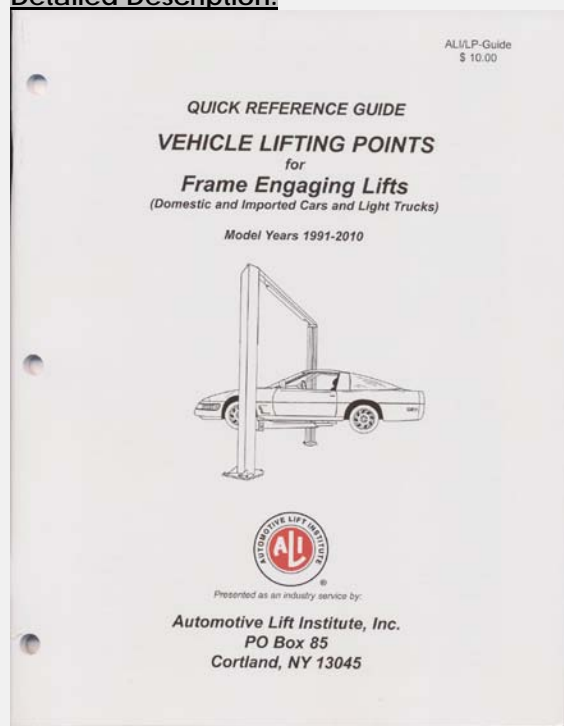
| | |
|-------------------------|-----------------------------------|
| BENDPAK Number: | 5900280 |
| MRP Description: | ALI/LP FRAME ENGAGING LIFTS GUIDE |
| Date: | 12/28/2010 |
| ECO : | 00431 |

1. Engineering Specification

Application:

ALI LIFTING GUIDE

Detailed Description:



2. Vendor Information

| Approved Vendor | Vendor Part # | Contact # | Preferred Vendor |
|-----------------|---------------|-----------|------------------|
| 1) | | | |

PART SPECIFICATION FORM

| | |
|-------------------------|-----------------------------------|
| BENDPAK Number: | 5900370 |
| MRP Description: | XPR-12CL-18CL INSTALLATION MANUAL |
| Date: | 03/15/2016 |
| ECO : | 00750 |

1. Engineering Specification

Application:

INSTALLATION MANUAL

Detailed Description:

WARNING

EUROPEAN USERS
400V 50Hz SUPPLY DETAILS ARE INCLUDED WITH ELECTRICAL CONTROL BOX. DISREGARD SUPPLY WIRING DETAILS IN THIS MANUAL.

IMPORTANT SAFETY INSTRUCTIONS SAVE THESE INSTRUCTIONS

PLEASE READ THE ENTIRE CONTENTS OF THIS MANUAL PRIOR TO INSTALLATION AND OPERATION. BY PROCEEDING WITH LIFT INSTALLATION AND OPERATION YOU AGREE THAT YOU FULLY UNDERSTAND AND COMPREHEND THE FULL CONTENTS OF THIS MANUAL. FORWARD THIS MANUAL TO ALL OPERATORS. FAILURE TO OPERATE THIS EQUIPMENT AS DIRECTED MAY CAUSE INJURY OR DEATH.
MAN REV A 03-01-2016
474-2000370

INSTALLATION AND OPERATION MANUAL

12,000 /15,000/18,000 POUND CAPACITY
SURFACE MOUNTED TWO-POST LIFTS

MODELS:

XPR-12CL
XPR-12CL-192
XPR-12CL-LWB
XPR-12CL-LWB-192
XPR-15CL
XPR-15CL-192
XPR-18CL
XPR-18CL-192



ORIGINAL INSTRUCTIONS IN
ENGLISH LANGUAGE

RECEIVING

The shipment should be thoroughly inspected as soon as it is received. The signed Bill of Lading is acknowledgement by the shipping carrier as receipt of this product as listed in your invoice as being in a good condition of shipment. If any of these goods listed on this Bill of Lading are missing or damaged, do not accept goods until the shipping carrier makes a notation on the freight bill of the missing or damaged goods. Do this for your own protection.

BE SAFE

Your new lift was designed and built with safety in mind. However, your overall safety can be increased with proper training and thoughtful operation on the part of the operator. DO NOT operate or repair this equipment without reading this manual and the important safety instructions shown inside. Keep this operation manual near the lift at all times. Make sure that ALL USERS read and understand this manual.

BP BendPak.

1645 Lemonwood Dr.
Santa Paula, CA. 93060, USA
Toll Free 1-800-253-2363
Tel: 1-805-933-9970
www.bendpak.com

2. Vendor Information

| Approved Vendor | Vendor Part # | Contact # | Preferred Vendor |
|-----------------|---------------|-----------|------------------|
| 1) | | | |

PART SPECIFICATION FORM

| | |
|------------------|--------------------|
| BENDPAK Number: | 5905109 |
| MRP Description: | WARNING ALI/WL 101 |
| Date: | 06/18/2013 |
| ECO : | 00605 |

1. Engineering Specification

Application:

ALI 2 POST SAFETY STICKER KIT

Detailed Description:

SIZE: 14" L x 8.5" W (356mm x 216mm)

Automotive Lift Institute, Inc
WL 101 Series
Label Kit

SAFETY INSTRUCTIONS

Read operating and safety manuals before using lift.

SAFETY INSTRUCTIONS

Proper maintenance and inspection is necessary for safe operation.

SAFETY INSTRUCTIONS

Do not operate a damaged lift.

The messages and pictographs shown are generic in nature and are meant to generally represent hazards common to all automotive lifts regardless of specific style.

Funding for the development and validation of these labels was provided by the Automotive Lift Institute, PO Box 33116 Indianapolis, IN 46233.

They are provided by copyright. Set of labels may be obtained from ALI or its member companies.

© 1992 by ALI, Inc. ALI/WL101

2. Vendor Information

| Approved Vendor | Vendor Part # | Contact # | Preferred Vendor |
|-----------------|---------------|-----------|------------------|
| 1) | | | |

PART SPECIFICATION FORM

| | |
|-------------------------|------------------------|
| BENDPAK Number: | 5905177 |
| MRP Description: | TO PROLONG LIFT OF TWO |
| Date: | 06/18/2013 |
| ECO : | 00605 |

1. Engineering Specification

Application:

RED CYLINDER WARNING

Detailed Description:

SIZE: 3" L x 1.75" W (76mm x 44mm)

PLEASE READ

Internal packing oil may cause the cylinders to bleed oil during start up. This is normal. To extend cylinder and seal life, raise the lift to full height at least once every day.

2. Vendor Information

| Approved Vendor | Vendor Part # | Contact # | Preferred Vendor |
|-----------------|---------------|-----------|------------------|
| 1) | | | |

PLEASE READ

Internal packing oil may cause the cylinders to bleed oil during start up. This is normal. To extend cylinder and seal life, raise the lift to full height at least once every day.

PART SPECIFICATION FORM

| | |
|-------------------------|----------------------------------|
| BENDPAK Number: | 5905311 |
| MRP Description: | BENDPAK LABEL; 4 x 38" WHITE INK |
| Date: | 05/13/2015 |
| ECO : | 00689 |

1. Engineering Specification

Application:

BENDPAK LABEL

Detailed Description:



SIZE: 38" L x 4.25" W (965mm x 108mm)

- Material: Yellow Represents Clear Adhesive PET
- Size: 4.25"W x 38"H
- Thickness: 4 Mil
- Finish: Polished
- Ink: U.V. protected, Opaque White
- Print Process: Silk Screen, 85 line-screen (Opaque White ink, clear adhesive PET will fill in blank areas.)
- Lamination: Clear-gloss over-laminate for abrasion, chemical, and ultra violet protection

2. Vendor Information

| Approved Vendor | Vendor Part # | Contact # | Preferred Vendor |
|-----------------|---------------|-----------|------------------|
| 1) | | | |

B

E

N

D

P

A

K

BendPak

ABOVE-GROUND LIFTS



BendPak®
PROVIDING AUTOMOTIVE SERVICE SOLUTIONS



1645 Lemonwood Drive
Santa Paula, CA 93060
U.S.A.
(805) 933-9970
www.bendpak.com

P/N 5905311

PART SPECIFICATION FORM

| | |
|-------------------------|--------------------|
| BENDPAK Number: | 5905404 |
| MRP Description: | MAX CAP DANGER 12K |
| Date: | 06/19/2013 |
| ECO : | 00605 |

1. Engineering Specification

Application:

LIFT CAPACITY STICKER

Detailed Description:



SIZE: 3.25" L x 4.5" W (82mm x 114mm)

P/N 5905404

2. Vendor Information

| Approved Vendor | Vendor Part # | Contact # | Preferred Vendor |
|-----------------|---------------|-----------|------------------|
| 1) | | | |

DANGER

THE MAXIMUM LIFTING CAPACITY FOR THIS LIFT IS DESCRIBED BELOW

Maximum Lifting Capacity

12,000 lbs. / 5443 kg

Max. Lifting Cap. / Front of Lift Center

6000 lbs. / 2722 kg

Max. Lifting Cap. / Rear of Lift Center

6000 lbs. / 2722 kg

Exceeding the weight capacity of this lift can damage lift and/or property and may cause personal harm, injury or death to operators and/or bystanders. All vehicles MUST be positioned on lift with CENTER OF GRAVITY midway between adapters and/or centered on runways. Damage to lift due to overloading or misuse IS NOT covered under warranty.

PART SPECIFICATION FORM

| | |
|-------------------------|---------------------|
| BENDPAK Number: | 5905555 |
| MRP Description: | 2-POST SAFETY DECAL |
| Date: | 06/18/2013 |
| ECO : | 00605 |

1. Engineering Specification

Application:

2-POST SAFETY DECAL

Detailed Description:



SIZE: 28.5" L x 4" W (724mm x 100mm)

2. Vendor Information

| Approved Vendor | Vendor Part # | Contact # | Preferred Vendor |
|-----------------|---------------|-----------|------------------|
| 1) | | | |

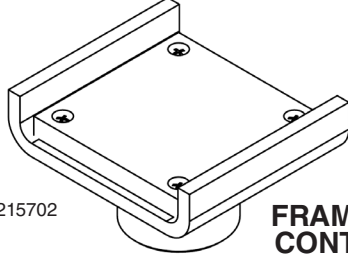
DANGER



Long wheelbase vehicles can damage lift and/or cause personal harm or injury to operators if loaded incorrectly.

All vehicles MUST be positioned on lift with CENTER OF GRAVITY midway between adapters.

DANGER



SKU# 5215702

**FRAME CRADLE
CONTACT PADS**

USE PROPER ADAPTERS

Do not attempt to lift trucks or other frame type vehicles with standard flat contact pads. Frame cradle contact pads are recommended for use when lifting trucks, vans, or other frame vehicles. NEVER use lift with missing or damaged rubber pads. ALWAYS REPLACE rubber contact pads when worn or damaged. Contact BendPak or your BendPak dealer for product information.

WARNING

WIRE ROPE INSPECTION AND MAINTENANCE

- Lifting cables should be replaced every (3) three years or when visible signs of damage are apparent. DO NOT USE LIFT WITH DEFECTIVE OR WORN CABLES.
- Wire rope should be maintained in a well-lubricated condition at all times. Wire rope is only fully protected when each wire strand is lubricated both internal and external. Excessive wear will shorten the life of the wire rope. The factory suggests wire rope lubricant that penetrates to the core of the rope and provides long-term lubrication between each individual strand. In order to make sure that the inner layers of the rope remain well lubricated, lubrication should be carried out at intervals not exceeding three (3) months during operation.
- All sheaves and guide rollers in contact with the moving wire rope should be given regular visual checks for surface wear and lubricated to make sure that they run freely. This operation should be carried out at appropriate intervals generally not exceeding three (3) months during operation. For all sheave axles, the factory recommends standard wheel bearing grease. For all sheaves and/or guide rollers, the factory recommends 90-WT gear oil or similar heavy lubricant applied by any method including pump/spray dispensing, brush, hand and/or swabbing.

Failure to read, understand and follow these instructions may cause death or serious injury. Read and understand these instructions before using lift.

IMPORTANT OPERATION / MAINTENANCE INSTRUCTIONS - PLEASE READ

TO RAISE LIFT

- ✓ Read Operating and Safety manuals before using lift.
- ✓ Always lift vehicle according to manufacturer's recommended lifting points.
- ✓ Position vehicle between columns. Adjust swing arms so that vehicle is positioned with the center of gravity midway between pads.
- ✓ Position lift contact pads at manufacturers recommended lifting points.
- ✓ Use lift adapters as needed. Never exceed 9" of pad/adaptor height.
- ✓ Raise lift by pressing RAISE BUTTON on power unit until contact pads make contact with the underside of the vehicle.
- ✓ Recheck to make sure vehicle is secure.
- ✓ Raise vehicle to desired working height then press power unit LOWERING HANDLE until lift carriages rest onto nearest safety lock position.
- ✓ Maintain visual contact with vehicle and surrounding area at all times while raising lift.
- ✓ **STOP IMMEDIATELY** if load shifts or becomes unlevel.
- ✓ Always ensure safety locks are engaged before any attempt is made to work on or near vehicle.
- ✓ Always ensure lift contact pads are making full contact with vehicle before any attempt is made to work on or near vehicle.

TO LOWER LIFT

- ✓ Raise lift by pressing RAISE BUTTON on power unit. Elevate lift at least two inches to allow adequate clearance for the locks to clear.
- ✓ Clear safety locks by maintaining pressure on SAFETY LOCK RELEASE HANDLE to its furthest travel.
- ✓ Be sure tool trays, stands or personnel are removed from under vehicle.
- ✓ Lower vehicle by pressing power unit lowering handle until lift has descended completely.
- ✓ Maintain visual contact with vehicle and surrounding area at all times while lowering lift.
- ✓ **STOP IMMEDIATELY** if load shifts or becomes unlevel.
- ✓ Before removing vehicle from lift area, position lift arms to provide unobstructed exit.
- ✓ NEVER, drive over lift arms.

REQUIRED MONTHLY MAINTENANCE

- ✓ ALWAYS consult operation manual for factory recommended maintenance.
- ✓ Check arm restraints for proper operation.
- ✓ Check all chain/cable connections, bolts and pins to insure proper mounting.
- ✓ Visually inspect safety locks for proper operation.
- ✓ Visually inspect concrete floor. DO NOT USE LIFT if concrete foundation shows signs of deterioration.
- ✓ Inspect all anchor bolts and retighten if necessary.
- ✓ Check columns for squareness and plumb.
- ✓ Inspect all pivot pins making sure they are properly secured.
- ✓ Check equalizer cable tension – cables must have equal tension - adjust if necessary.
- ✓ Inspect all lift pads, replace if necessary.
- ✓ If lift is equipped with overhead cut-off switch, check for proper operation.

WARNING!

1. **WARNING:** If cement anchor bolts are loose, or any component of the lift is found to be defective, **DO NOT USE LIFT!**
2. Never operate the lift with any person or equipment below.
3. Never exceed rated capacity.
4. Always insure safety locks are engaged before any attempt is made to work on or near vehicle.
5. Never leave lift in an elevated position unless the safety locks are engaged.
6. Do not permit electric motor to get wet! Motor damage caused by dampness is not covered under warranty.

CAUTION



NEVER LIFT ANY VEHICLE IN ANY MANNER WITH LESS THAN FOUR (4) ARMS. RATED CAPACITY OF EACH LIFT ARM IS NO GREATER THAN ONE FOURTH (1/4) OF THE OVERALL LIFTING CAPACITY.

PART SPECIFICATION FORM

| | |
|-------------------------|-------------------------|
| BENDPAK Number: | 5905660 |
| MRP Description: | MAX CAP NRTL DANGER 12K |
| Date: | 05/06/2013 |
| ECO : | 00593 |

1. Engineering Specification

Application:

LIFT CAPACITY STICKER FOR CE LIFTS

Detailed Description:



SIZE: 3.25" L x 4.5" W (82mm x 114mm)

2. Vendor Information

| Approved Vendor | Vendor Part # | Contact # | Preferred Vendor |
|-----------------|---------------|-----------|------------------|
| 1) | | | |

! ATTENTION !

MAXIMUM LIFTING CAPACITY

12000 Lbs.

5443 Kg.

PART SPECIFICATION FORM


| | |
|-------------------------|--------------------|
| BENDPAK Number: | 5905940 |
| MRP Description: | PRODUCT DATA LABEL |
| Date: | 05/06/2013 |
| ECO : | 00593 |

1. Engineering Specification

Application:

PRODUCT DATA LABEL

Detailed Description:



SANTA PAULA, CA USA
 WWW.BENDPAK.COM

LIFT TYPE: SURFACE MOUNT CAP: MED/HVY DTY MFG. BPK SEE DATA PLATE FOR PRODUCT DETAILS
 POWER: ELECTRIC/HYDRAULIC INSTALLATION - SEE OWNERS GUIDE OR CONTACT FACTORY

SAFETY INSTRUCTIONS: IF ATTACHMENTS, ACCESSORIES OR CONFIGURATION MODIFYING COMPONENTS THAT ARE LOCATED IN THE LOAD PATH, AFFECT OPERATION OF THE LIFT, AFFECT THE LIFT ELECTRICAL LISTING OR AFFECT INTENDED VEHICLE ACCOMMODATION ARE USED ON THIS LIFT AND, IF THEY ARE NOT CERTIFIED FOR USE ON THIS LIFT, THEN THE CERTIFICATION OF THIS LIFT SHALL BECOME NULL AND VOID. CONTACT THE PARTICIPANT FOR INFORMATION PERTAINING TO CERTIFIED ATTACHMENTS, ACCESSORIES OR CONFIGURATION MODIFYING COMPONENTS.

BENDPAK LIFTS ARE SUPPLIED WITH CONCRETE FASTENERS MEETING THE CRITERIA AS PRESCRIBED BY ASTM E488 - 96(2003). LIFT BUYERS ARE RESPONSIBLE FOR ANY SPECIAL REGIONAL STRUCTURAL AND/OR SEISMIC ANCHORING REQUIREMENTS SPECIFIED BY ANY OTHER AGENCIES AND/OR CODES SUCH AS THE UNIFORM BUILDING CODE (UBC) AND/OR INTERNATIONAL BUILDING CODE (IBC).

THE MANUFACTURE, USE, SALE OR IMPORT OF THIS PRODUCT MAY BE SUBJECT TO ONE OR MORE UNITED STATES PATENTS, OR PENDING APPLICATIONS, OWNED BY BENDPAK, INC.
 DO NOT REMOVE ENGINEERED BY BENDPAK INC. USA MADE IN CHINA

SIZE: 2.3" L x 4.5" W (58mm x 114mm)

2. Vendor Information

| Approved Vendor | Vendor Part # | Contact # | Preferred Vendor |
|-----------------|---------------|-----------|------------------|
| 1) | | | |



SANTA PAULA, CA USA
WWW.BENDPAK.COM
PN 5905940

LIFT TYPE: SURFACE MOUNT CAP: MED/HVY DTY MFG. BPK SEE DATA PLATE FOR PRODUCT DETAILS
POWER: ELECTRIC/HYDRAULIC INSTALLATION - SEE OWNERS GUIDE OR CONTACT FACTORY

SAFETY INSTRUCTIONS: IF ATTACHMENTS, ACCESSORIES OR CONFIGURATION MODIFYING COMPONENTS THAT ARE LOCATED IN THE LOAD PATH, AFFECT OPERATION OF THE LIFT, AFFECT THE LIFT ELECTRICAL LISTING OR AFFECT INTENDED VEHICLE ACCOMMODATION ARE USED ON THIS LIFT AND, IF THEY ARE NOT CERTIFIED FOR USE ON THIS LIFT, THEN THE CERTIFICATION OF THIS LIFT SHALL BECOME NULL AND VOID. CONTACT THE PARTICIPANT FOR INFORMATION PERTAINING TO CERTIFIED ATTACHMENTS, ACCESSORIES OR CONFIGURATION MODIFYING COMPONENTS.

BENDPAK LIFTS ARE SUPPLIED WITH CONCRETE FASTENERS MEETING THE CRITERIA AS PRESCRIBED BY ASTM E488 - 96(2003). LIFT BUYERS ARE RESPONSIBLE FOR ANY SPECIAL REGIONAL STRUCTURAL AND/OR SEISMIC ANCHORING REQUIREMENTS SPECIFIED BY ANY OTHER AGENCIES AND/OR CODES SUCH AS THE UNIFORM BUILDING CODE (UBC) AND/OR INTERNATIONAL BUILDING CODE (IBC).

THE MANUFACTURE, USE, SALE OR IMPORT OF THIS PRODUCT MAY BE SUBJECT TO ONE OR MORE UNITED STATES PATENTS, OR PENDING APPLICATIONS, OWNED BY BENDPAK, INC.

DO NOT REMOVE

ENGINEERED BY BENDPAK INC. USA

MADE IN CHINA

PART SPECIFICATION FORM

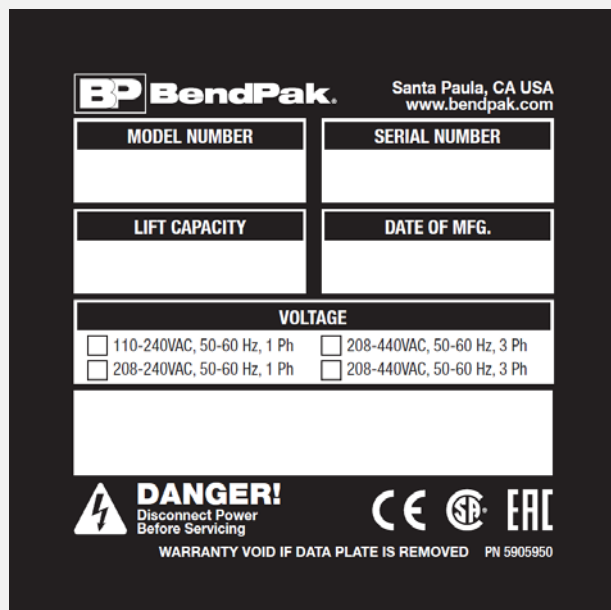
| | |
|-------------------------|---------------------------|
| BENDPAK Number: | 5905950 |
| MRP Description: | 2015_SERIAL_TAG-A-5905950 |
| Date: | 11/06/2015 |
| ECO : | 00738 |

1. Engineering Specification

Application:

DATA SERIAL TAG 2 POST CE

Detailed Description:



The image shows a template for a BendPak data plate. It includes the BendPak logo and company information at the top. Below this are fields for Model Number, Serial Number, Lift Capacity, and Date of Mfg. There is a section for Voltage with checkboxes for different configurations. At the bottom, there is a warning label 'DANGER! Disconnect Power Before Servicing' and a note 'WARRANTY VOID IF DATA PLATE IS REMOVED PN 5905950'.

SIZE: 3.48" L x 3.50" W
 (88.4mm x 88.9mm)

2. Vendor Information (Or for Reference)

| Approved Vendor | Vendor Part # | Contact # | Preferred Vendor |
|--|---------------|-----------|------------------|
| 1) | | | |
| 2) | | | |
| OR BENDPAK ENGINEERING APPROVED EQUIVALENT | | | |



Santa Paula, CA USA
www.bendpak.com

MODEL NUMBER

SERIAL NUMBER

LIFT CAPACITY

DESCRIPTION

VOLTAGE

☐ 110-240VAC, 50-60 Hz, 1 Ph

☐ 380-415VAC, 50-60 Hz, 3 Ph

☐ 208-240VAC, 50-60 Hz, 1 Ph

☐ 208-440VAC, 50-60 Hz, 3 Ph

DATE OF MFG.



DANGER!

Disconnect Power
Before Servicing



WARRANTY VOID IF DATA PLATE IS REMOVED PN 5905950



2016
2-Post Lifts
Colors & Graphics

XPR-9DS

XPR-10AS

XPR-9DTS

XPR-10AS-LP

XPR-9DS-LP

XPR-12FDL

XPR-10S

XPR-12CL

XPR-10S-LP

XPR-15CL

XPR-10TS

XPR-18CL

*** Does not include Models XPR-9, XPR-9TS & XPR-9-LP**

1/7/16

CONFIDENTIAL INFORMATION.

You may not disclose, print, copy or disseminate this information.
Unauthorized use is a violation of federal criminal law.

2-Post Lifts Product Decal Positioning



BPK Post Lift Decal.pdf

Material: Clear Adhesive PET

Size: 4.25"W x 38"H

Thickness: 4 Mil

Finish: Polished

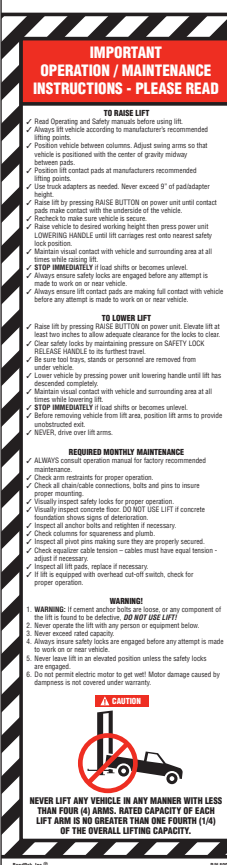
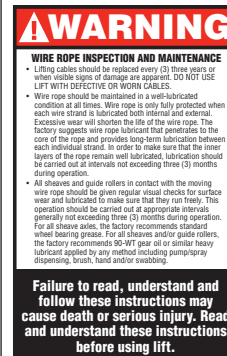
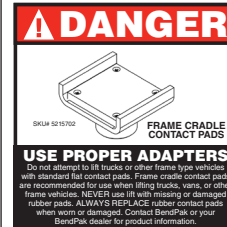
Ink: U.V. protected, Opaque White

Print Process: Silk Screen, 85 line-screen (Yellow color in file represents what should be clear PET material and SHOULD NOT print as Yellow ink. White area in file represents Opaque White ink.)

Lamination: Clear-gloss over-laminate for abrasion, chemical, and ultra violet protection

Total of 4

B



2-Post Safety Decal.pdf:

Size: 4"W x 28.75"H

Material: White Vinyl Pressure Sensitive Adhesive

Thickness: 4 Mil

Ink: U.V. protected CMYK 2/C Process

Finish: Polished

Print Process: Offset Lithography - 200 line-screen or 300 p.p.i. for digital

Lamination: Clear-gloss over-laminate for abrasion, chemical, and ultra violet protection

Place on BACK of Powerside Post

P/N 5905311

P/N 5905555

2-Post Lifts Product Decal Positioning

***C**

***Max. Cap. Danger.pdf:**
 Size: 4"W x 5"H
 Material: White Vinyl Pressure Sensitive Adhesive
 Thickness: 4 Mil
 Ink: U.V. protected CMYK 2/C Process
 Finish: Polished
 Print Process: Offset Lithography - 200 line-screen or 300 p.p.i. for digital
 Lamination: Clear-gloss over-laminate for abrasion, chemical, and ultra violet protection

P/N 5905401 - Max Cap. Danger 7k
 P/N 5905402 - Max Cap. Danger 9k
 P/N 5905403 - Max Cap. Danger 10k
 P/N 5905404 - Max Cap. Danger 12k
 P/N 5905405 - Max Cap. Danger 15k
 P/N 5905406 - Max Cap. Danger 18k

***D**

***Max. Cap. Attention.pdf:**
 Size: 4.5"W x 3.25"H
 Material: White Vinyl Pressure Sensitive Adhesive
 Thickness: 4 Mil
 Ink: U.V. protected CMYK 2/C Process
 Finish: Polished
 Print Process: Offset Lithography - 200 line-screen or 300 p.p.i. for digital
 Lamination: Clear-gloss over-laminate for abrasion, chemical, and ultra violet protection

P/N 5905645 - Max Cap. Attention 7k
 P/N 5905650 - Max Cap. Attention 9k
 P/N 5905655 - Max Cap. Attention 10k
 P/N 5905660 - Max Cap. Attention 12k
 P/N 5905670 - Max Cap. Attention 15k
 P/N 5905675 - Max Cap. Attention 18k

*DEPENDS ON LIFT MODEL AND CAPACITY

E

Product Data Label_5905940-New.pdf:
 Size: 4.5"W x 2.3"H
 Material: White Vinyl Pressure Sensitive Adhesive
 Thickness: 4 Mil
 Ink: U.V. protected CMYK 2/C Process
 Finish: Polished
 Print Process: Offset Lithography - 200 line-screen or 300 p.p.i. for digital
 Lamination: Clear-gloss over-laminate for abrasion, chemical, and ultra violet protection

P/N 5905940

F

ALI Blue

P/N 5905109
(As a set E, F & G)

G

ALI Yellow

H

ALI Orange

2-Post Lifts Product Decal Positioning

PLEASE READ

Internal packing oil may cause the cylinders to bleed oil during start up. This is normal. To extend cylinder and seal life, raise the lift to full height at least once every day.

P/N 5905177

Place on **BOTH** Posts

LR-60_Warning_Instructions_Label.pdf:

Size: 3"W x 1.75"H

Material: White Vinyl Pressure Sensitive Adhesive

Thickness: 4 Mil

Ink: U.V. protected CMYK 2/C Process

Finish: Polished

Print Process: Offset Lithography - 200 line-screen or 300 p.p.i. for digital

Lamination: Clear-gloss over-laminate for abrasion, chemical, and ultra violet protection



ALI-Gold-Label-5905326.pdf

P/N 5905326

***FOR ALI APPROVED LIFTS ONLY**

K

| | |
|---|---|
| BP BendPak Santa Paula, CA USA www.bendpak.com | |
| MODEL NUMBER | |
| SERIAL NUMBER | |
| LIFT CAPACITY | DESCRIPTION |
| VOLTAGE | |
| <input type="checkbox"/> 110-240VAC, 50-60 Hz, 1 Ph | <input type="checkbox"/> 380-415VAC, 50-60 Hz, 3 Ph |
| <input type="checkbox"/> 208-240VAC, 50-60 Hz, 1 Ph | <input type="checkbox"/> 208-440VAC, 50-60 Hz, 3 Ph |
| DATE OF MFG. | |
| DANGER! Disconnect Power Before Servicing WARRANTY VOID IF DATA PLATE IS REMOVED PN 5905950 | |
| CE SP EAC | |

2015_Serial_Tag-A-5905950.pdf:

Size: 3"W x 3"H

Material: 2 Mil. Gloss polyester thermal transfer label with a high performance permanent acrylic adhesive.

Ink: 1 Color-Black

***FOR CE APPROVED LIFTS ONLY**

P/N 5905950

L

| | |
|---|---|
| BP BendPak Santa Paula, CA USA www.bendpak.com | |
| MODEL NUMBER | |
| SERIAL NUMBER | |
| LIFT CAPACITY | DESCRIPTION |
| VOLTAGE | |
| <input type="checkbox"/> 110-240VAC, 50-60 Hz, 1 Ph | <input type="checkbox"/> 380-415VAC, 50-60 Hz, 3 Ph |
| <input type="checkbox"/> 208-240VAC, 50-60 Hz, 1 Ph | <input type="checkbox"/> 208-440VAC, 50-60 Hz, 3 Ph |
| DATE OF MFG. | |
| DANGER! Disconnect Power Before Servicing WARRANTY VOID IF DATA PLATE IS REMOVED PN 5905951 | |
| CE SP EAC | |

2015_Serial_Tag-B-5905951.pdf:

Size: 3"W x 3"H

Material: 2 Mil. Gloss polyester thermal transfer label with a high performance permanent acrylic adhesive.

Ink: 1 Color-Black

***FOR NON-CE APPROVED LIFTS ONLY**

P/N 5905951

2-Post Lifts Product Decal Positioning

**Depends if
CE-APPROVED
or NON-CE**

**K or
L**

Place labels on
back side next
to power unit.

J

D

E

F

G

H

Powerside Post

A

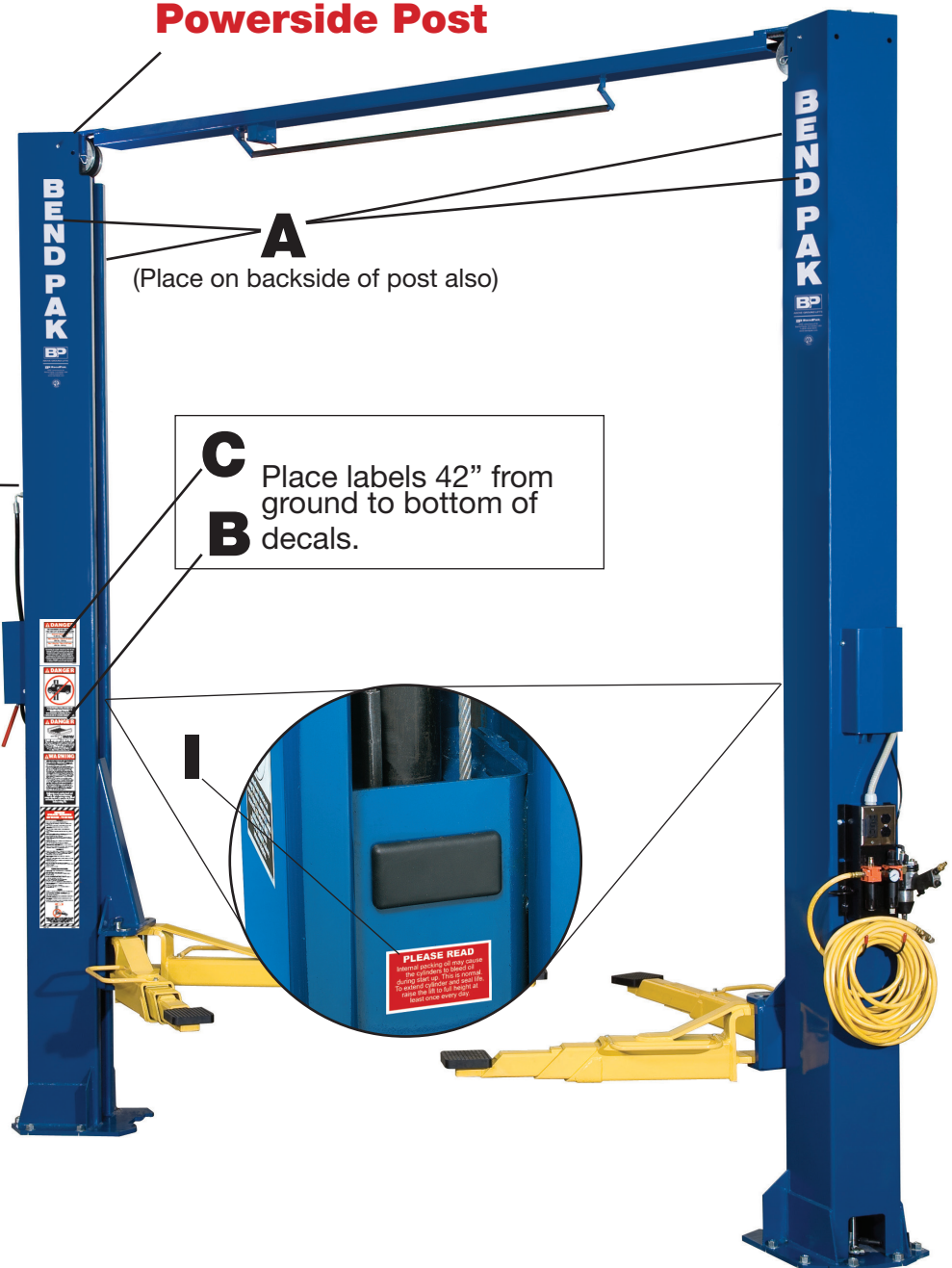
(Place on backside of post also)

C

Place labels 42" from
ground to bottom of
decals.

B

I



2 Post Lifts Packaging

| | |
|---|---------------|
| BP BendPak. Santa Paula, CA USA www.bendpak.com | |
| MODEL NUMBER | SERIAL NUMBER |
| | |
| | |
| PN 5905285 | |

Serial_Tag_New-2015_Peel_Off-5905285.jpg:

Size: 3"W x 3"H

Material:Material: 2 Mil. Matte Silver Polyester
(Flex-PSE)

Print using thermal transfer printer with resin ribbon

Ink: 1 Color-Black

| | |
|--|---------------|
| PEEL OFF INVENTORY LABEL | |
| MODEL NUMBER | SERIAL NUMBER |
| | |
| PN 5905285 | |
| Do not remove back sheet of this portion to prevent from sticking completely as shown in image. | |

