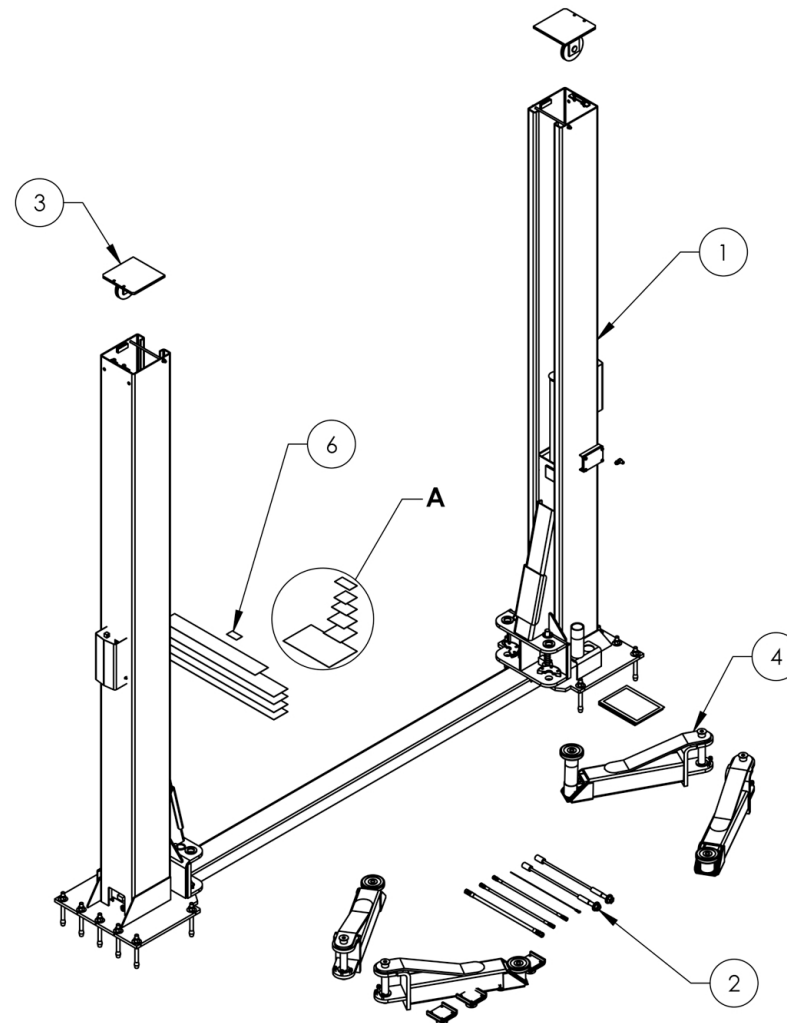


Service Manual

Service Parts & Diagrams

XPR-12FDL

BendPak SKU 5260568
XPR-12FDL Two-Post Car Lift
Version E
04/20/2016



This guide is a troubleshooting reference used for maintaining and servicing your BendPak product. It provides comprehensive information on identifying serviceable parts and components and assists in troubleshooting problems and performing assembly/disassembly procedures.



BendPak, Inc. Corporate Office

1645 Lemonwood Drive
Santa Paula, CA 93060 USA
Toll Free US/Canada: 1-800-253-2363
Fax: 1-805-933-9160
info@bendpak.com

Customer Service Desk / Warranty

Customer Service Representatives
Office Tel: 1-805-933-9970
Toll Free US/Canada: 1-800-253-2363
Fax: 1-805-933-9160
customerservice@bendpak.com

Parts Orders

Customer Service Representatives
Office Tel: 1-805-933-9970
Toll Free US/Canada: 1-800-253-2363
Fax: 1-805-933-9160
parts@bendpak.com

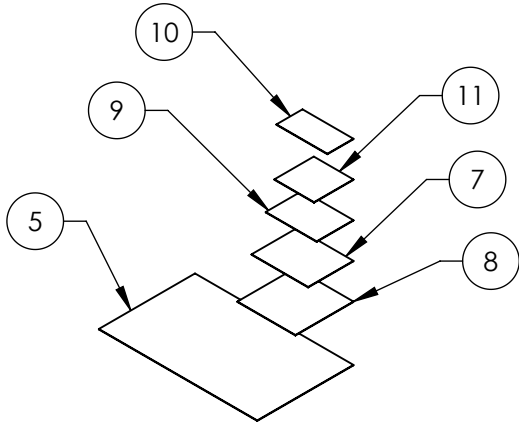
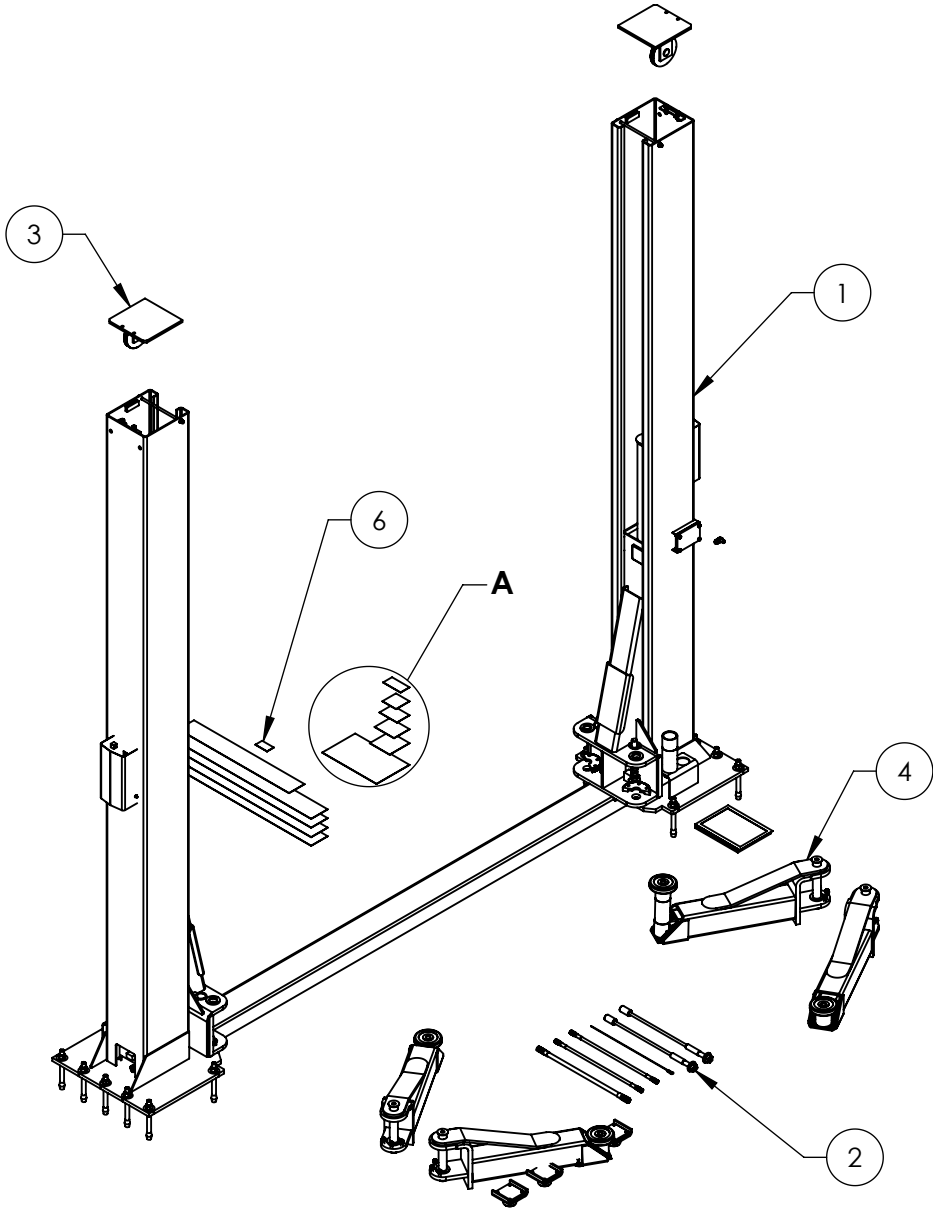
Domestic Sales & Service

USA Sales Representatives
Office Tel: 1-805-933-9970
Toll Free US/Canada: 1-800-253-2363
Fax: 1-805-933-9160
sales@bendpak.com

International Sales & Service

Office Tel: 1-805-933-9970
Exports Department: 1-805-933-9970 Ext. 192
Toll Free US/Canada: 1-800-253-2363
Fax: 1-805-933-9160
bpkexports@bendpak.com

		REVISION			
REV	DESCRIPTION	DATE	EDITED BY	ECO#	
A	PRODUCTION RELEASE, DERIVED FROM 5260441	12/15/2015	TM	00738	
B	UPDATED BOM REVISION	03/22/2016	TM	00750	



DETAIL A
SCALE 1 : 12

ITEM NO	PART NUMBER	DESCRIPTION	QTY	REV
1	5245137	XPR-12FDL LIFT SUPERSTRUCTURE	1	V
2	5250042	XPR-12FDL/12FDL-LWB PARTS BOX	1	B
3	5215376	XPR-12FDL TOP EQUALIZER PULLEY PLATE ASSEMBLY	2	F
4	5215283	XPR-12CL/FDL TRIPLE TELESCOPING ARM ASSEMBLY	4	D
5	5905109	WARNING ALI/WL 101	1	-
6	5905131	2 POST DECAL KIT, LESS ALI	1	C
7	5905404	MAX CAP DANGER 12K	1	-
8	5905465	MANUFACTURER LABEL	1	-
9	5905660	MAX CAP NRTL DANGER 12K	1	-
10	5905940	PRODUCT DATA LABEL	1	-
11	5905950	2015 SERIAL TAG-A-5905950	1	-

DO NOT SCALE DRAWING

NAME DATE

DRAWN TM 12/15/2015

CHECKED

THIRD ANGLE PROJECTION

DIMENSIONS ARE IN MM



PROPRIETARY AND CONFIDENTIAL
THE INFORMATION CONTAINED IN THIS DRAWING IS
THE SOLE PROPERTY OF BENDPAK INC. ANY
REPRODUCTION IN PART OR AS A WHOLE WITHOUT
THE WRITTEN PERMISSION OF BENDPAK INC. IS
PROHIBITED.

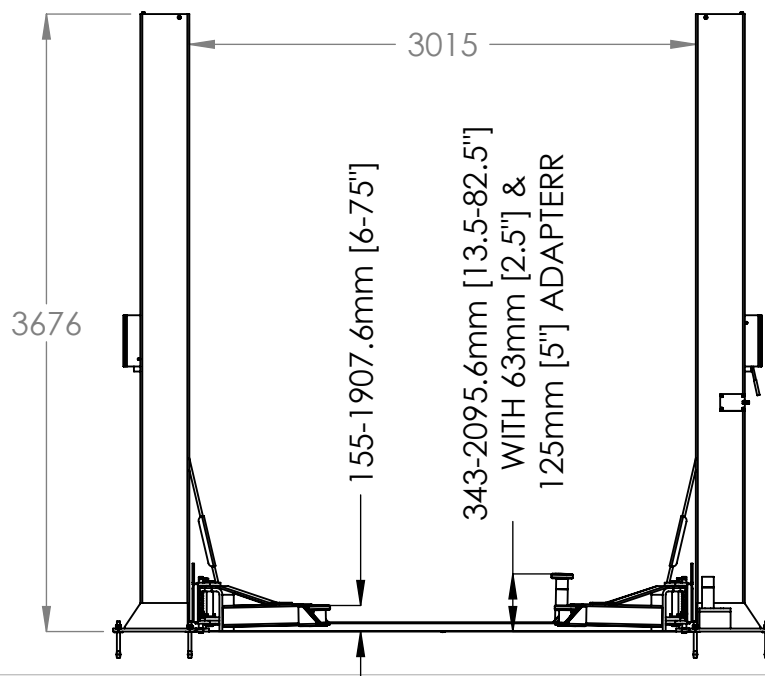
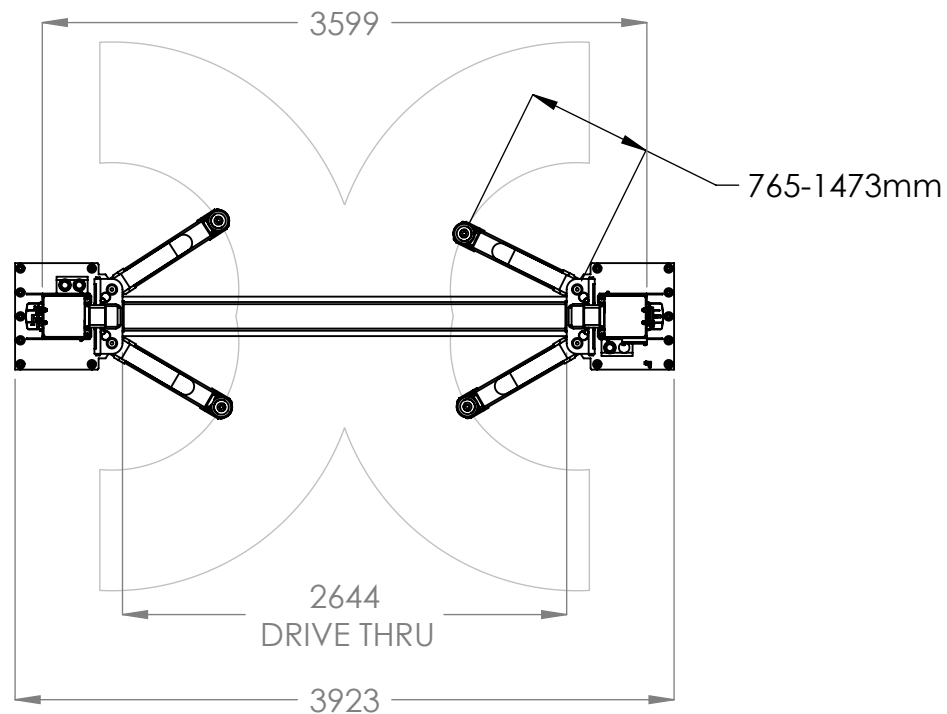
BendPak 1645 LEMONWOOD DR.
SANTA PAULA, CA 93060

TITLE: XPR-12FDL
PRODUCTION LIFT VER E

SIZE DWG. NO. REV
A 5260568 **B**

SCALE: 1:35 SHEET 1 OF 2

NOTE: UNLESS OTHERWISE SPECIFIED.
1. SEE SHIPPING INSTRUCTIONS FOR FINAL PACKAGING
2. ALL LABELS TO BE APPLIED TO POSTS AFTER PAINTING.
SEE ATTACHED LABEL PLACEMENT SHEET.



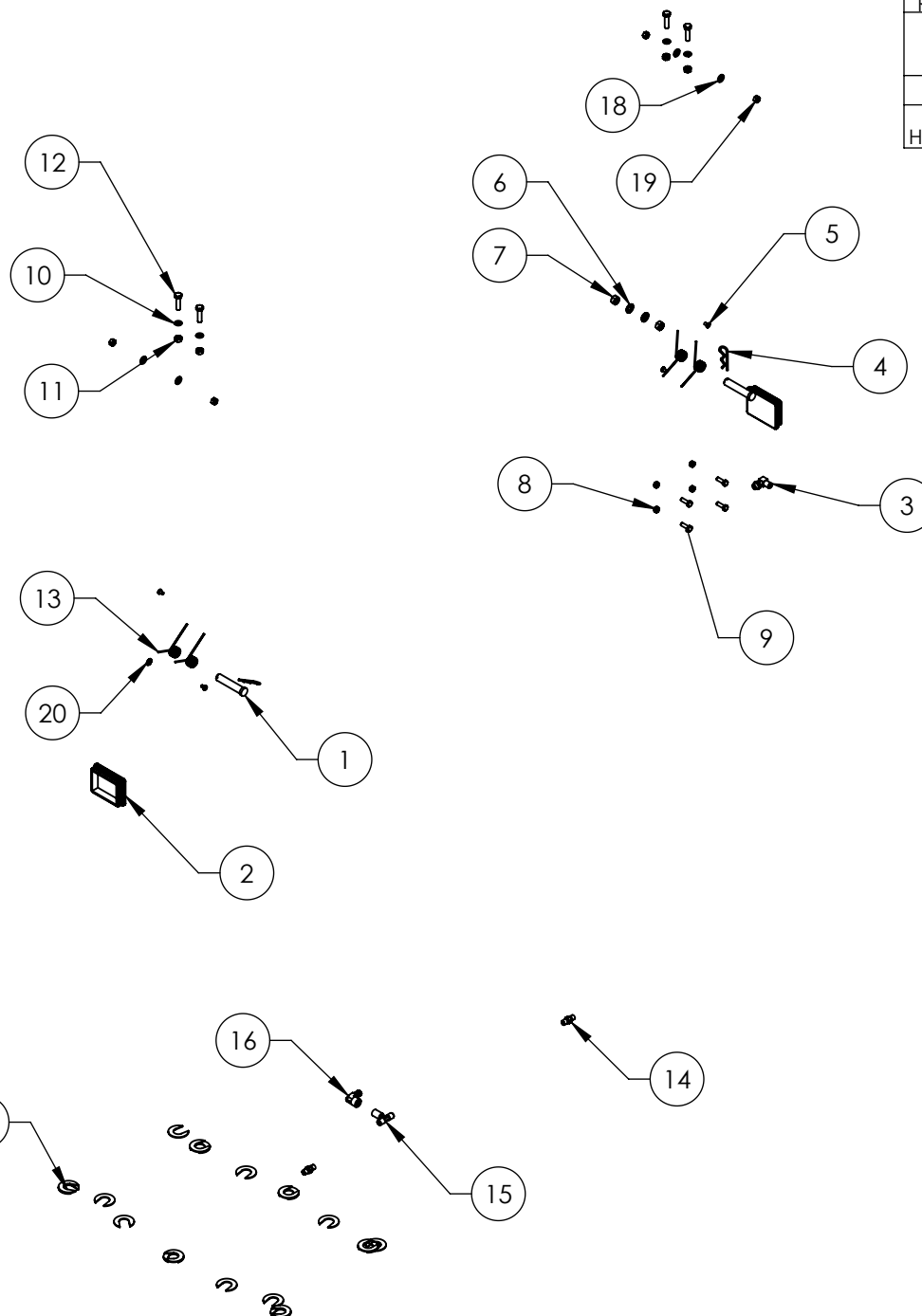
BendPak 1645 LEMONWOOD DR.
SANTA PAULA, CA 93060

TITLE: XPR-12FDL
PRODUCTION LIFT VER E

SIZE	DWG. NO.	REV
A	5260568	B

SCALE: 1:45

SHEET 2 OF 2





REVISION				
REV	DESCRIPTION	DATE	EDITED BY	ECO#
F	ADDED (2) 5540075, REPLACED 5530314 WITH 5530261, REPLACED 5540001 WITH 5540075, UPDATED BOM REVISION AND NEXT ASSEMBLIES	06/17/2013	TM	00605
G	UPDATED BOM REVISION	05/29/2014	TM	00649
H	REPLACED 5505113 WITH 5505001	10/06/2014	TM	00663
H-001	UPDATED NEXT ASSEMBLIES	12/17/2015	TM	00738

ITEM NO	PART NUMBER	DESCRIPTION	QTY	REV
1	5505001	GP-7/PL-6000/XPR SERIES SAFETY CLEVIS PIN	2	A
2	5715196	XPR PLASTIC COVER BLOCK 105 x 80	2	C
3	5550183	FTG ELB -06 JIC -06L ORB	1	-
4	5505350	MODEL #211 HAIR PIN/ LARGE	2	-
5	5530261	PHPS M6 x 1 x 10	4	-
6	5545347	WASHER M12 FLAT WASHER	2	-
7	5535354	NUT M12 x 1.75	2	-
8	5535001	NUT M8 x 1.25 NL	4	-
9	5530010	HHB M8 x 1.25 x 25	4	-
10	5545200	WASHER M10 x Ø18 SL	4	-
11	5535998	NUT M10 x 1.5	4	-
12	5530760	HEX HEAD BOLT M10x1.25x35	4	-
13	5540075	2.5 WIRE DIA., Ø20.5 x 75 LG	4	-
14	5550147	FTG NPL -04 JIC x -04 NPT	2	-
15	5550178	FTG TEE -04JIC -04JIC -06NPT	1	-
16	5550109	FTG ELB -06 JIC x -06 F NPT	1	-
17	5545535	C WASHER SHIM FOR LIFTS	20	-
18	5545341	WASHER M10 x Ø20 FLAT	4	-
19	5535013	NUT M10 x 1.5 NL	4	-
20	5505031	ROTOR CLIP 12mm SS	1	-

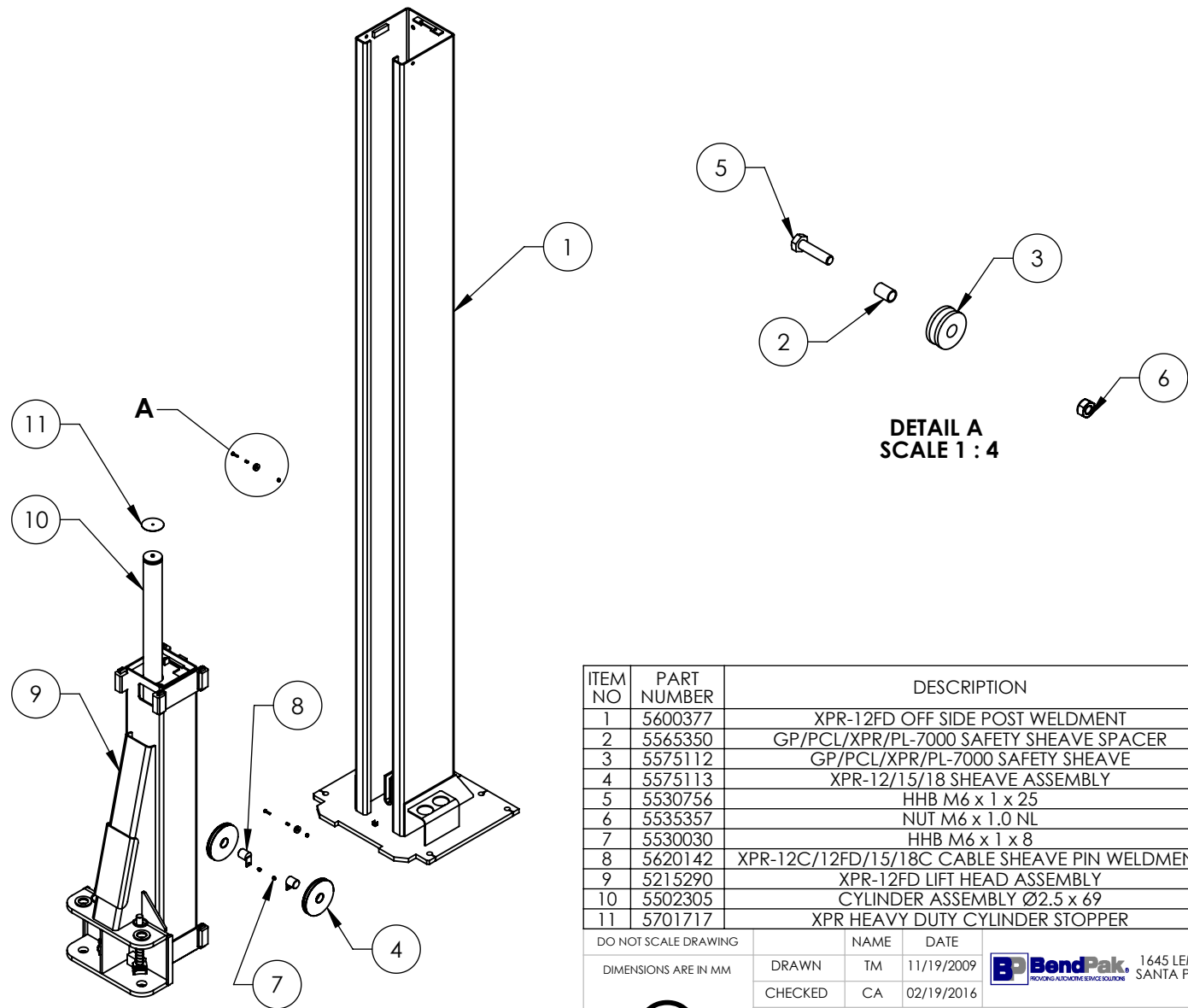
NOTE: UNLESS OTHERWISE SPECIFIED.

1. SEE SHIPPING INSTRUCTIONS FOR FINAL PACKAGING

NEXT ASSEMBLY
5250042
5250038

DO NOT SCALE DRAWING	NAME	DATE		
	DRAWN	TM	02/10/2010	 1645 LEMONWOOD DR. SANTA PAULA, CA 93060
	CHECKED	CA	02/19/2016	
DIMENSIONS ARE IN MM	THIRD ANGLE PROJECTION		TITLE: XPR-9D/12FD PARTS BAG	
	PROPRIETARY AND CONFIDENTIAL THE INFORMATION CONTAINED IN THIS DRAWING IS THE SOLE PROPERTY OF BENDPAK INC. ANY REPRODUCTION IN PART OR AS A WHOLE WITHOUT THE WRITTEN PERMISSION OF BENDPAK INC. IS PROHIBITED.		SIZE DWG. NO.	
			A 5174114	
		SCALE: 1:18		REV H
				SHEET 1 OF 1

REVISION				
REV	DESCRIPTION	DATE	EDITED BY	ECO#
R	UPDATED BOM REVISION	12/01/2014	TM	00673
T	UPDATED BOM REVISION	05/14/2015	TM	00689
U	UPDATED BOM REVISIONS	11/12/2015	TM	00738



ITEM NO	PART NUMBER	DESCRIPTION	QTY	REV
1	5600377	XPR-12FD OFF SIDE POST WELDMENT	1	F
2	5565350	GP/PCL/XPR/PL-7000 SAFETY SHEAVE SPACER	2	C
3	5575112	GP/PCL/XPR/PL-7000 SAFETY SHEAVE	2	C
4	5575113	XPR-12/15/18 SHEAVE ASSEMBLY	2	D
5	5530756	HHB M6 x 1 x 25	2	-
6	5535357	NUT M6 x 1.0 NL	2	-
7	5530030	HHB M6 x 1 x 8	2	-
8	5620142	XPR-12C/12FD/15/18C CABLE SHEAVE PIN WELDMENT	2	A
9	5215290	XPR-12FD LIFT HEAD ASSEMBLY	1	M
10	5502305	CYLINDER ASSEMBLY Ø2.5 x 69	1	E
11	5701717	XPR HEAVY DUTY CYLINDER STOPPER	1	A

DO NOT SCALE DRAWING

DIMENSIONS ARE IN MM



NAME	DATE
DRAWN TM	11/19/2009
CHECKED CA	02/19/2016

THIRD ANGLE PROJECTION



PROPRIETARY AND CONFIDENTIAL
THE INFORMATION CONTAINED IN THIS DRAWING IS THE SOLE PROPERTY OF BENDPAK INC. ANY REPRODUCTION IN PART OR AS A WHOLE WITHOUT THE WRITTEN PERMISSION OF BENDPAK INC. IS PROHIBITED.

BendPak 1645 LEMONWOOD DR.
SANTA PAULA, CA 93060

TITLE: XPR-12FD OFF SIDE POST ASSEMBLY

SIZE	DWG. NO.	REV
A	5215233	U

SCALE: 1:25

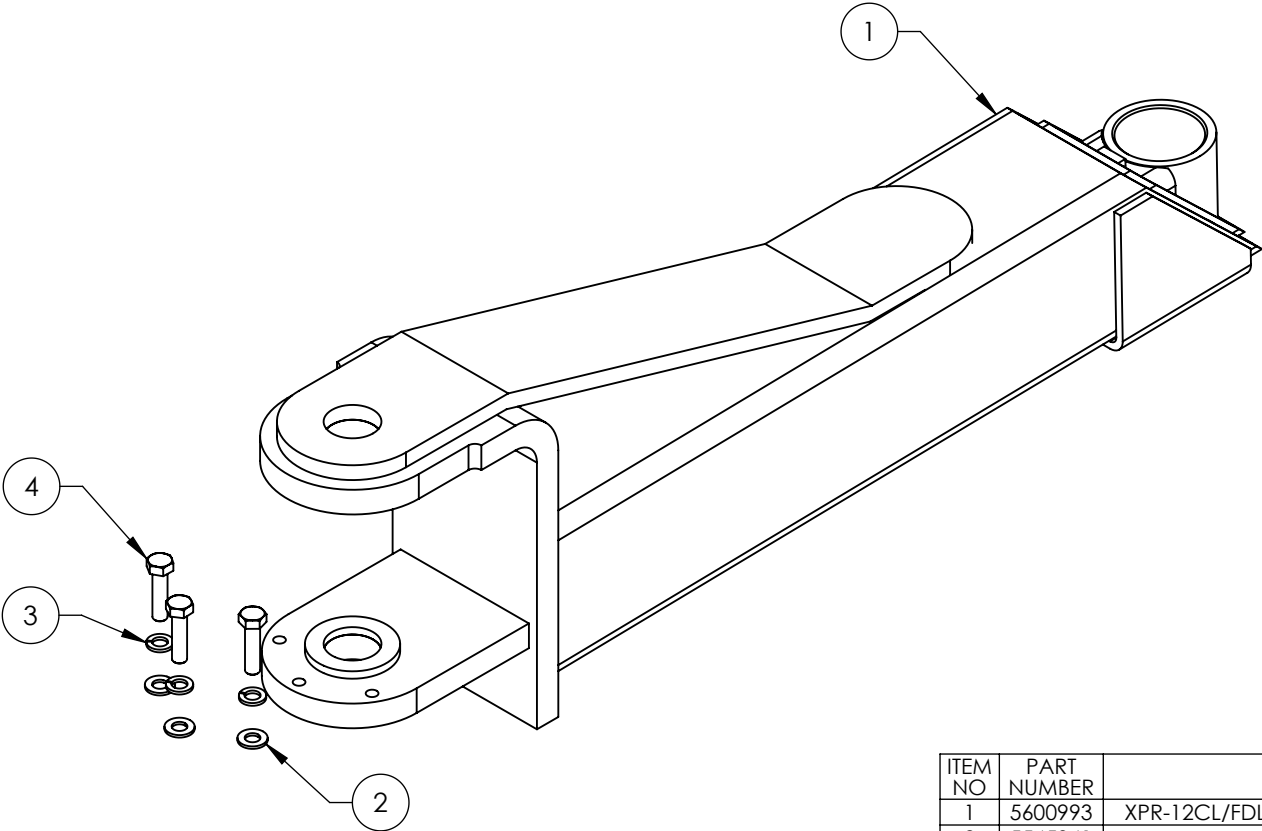
SHEET 1 OF 1

NOTE: UNLESS OTHERWISE SPECIFIED.




- SEE SHIPPING INSTRUCTIONS FOR FINAL PACKAGING
- ASSEMBLE ITEMS AS SHOWN

NEXT ASSEMBLY
5245137

REVISION				
REV	DESCRIPTION	DATE	EDITED BY	ECO#
B	UPDATED BOM REVISION	09/22/2015	TM	00729
C	UPDATED TITLE TO REFLECT WHERE USED UPDATED BOM REVISION AND NEXT ASSEMBLIES	11/25/2015	TM	00738
D	UPDATED BOM REVISION	02/19/2016	TM	00750



ITEM NO	PART NUMBER	DESCRIPTION	QTY	REV
1	5600993	XPR-12CL/FDL TRIPLE TELESCOPING ARM WELDMENT	1	D
2	5545341	WASHER M10 x Ø20 FLAT	3	-
3	5545200	WASHER M10 x Ø18 SL	3	-
4	5530302	HHB M10 x 1.5 x 40	3	-

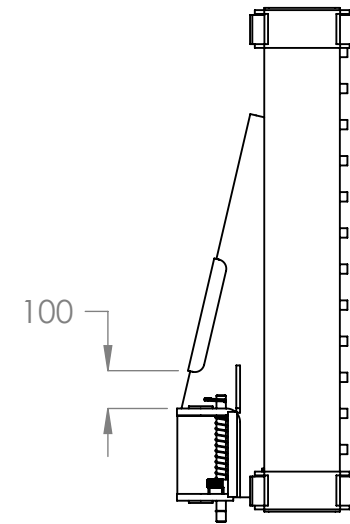
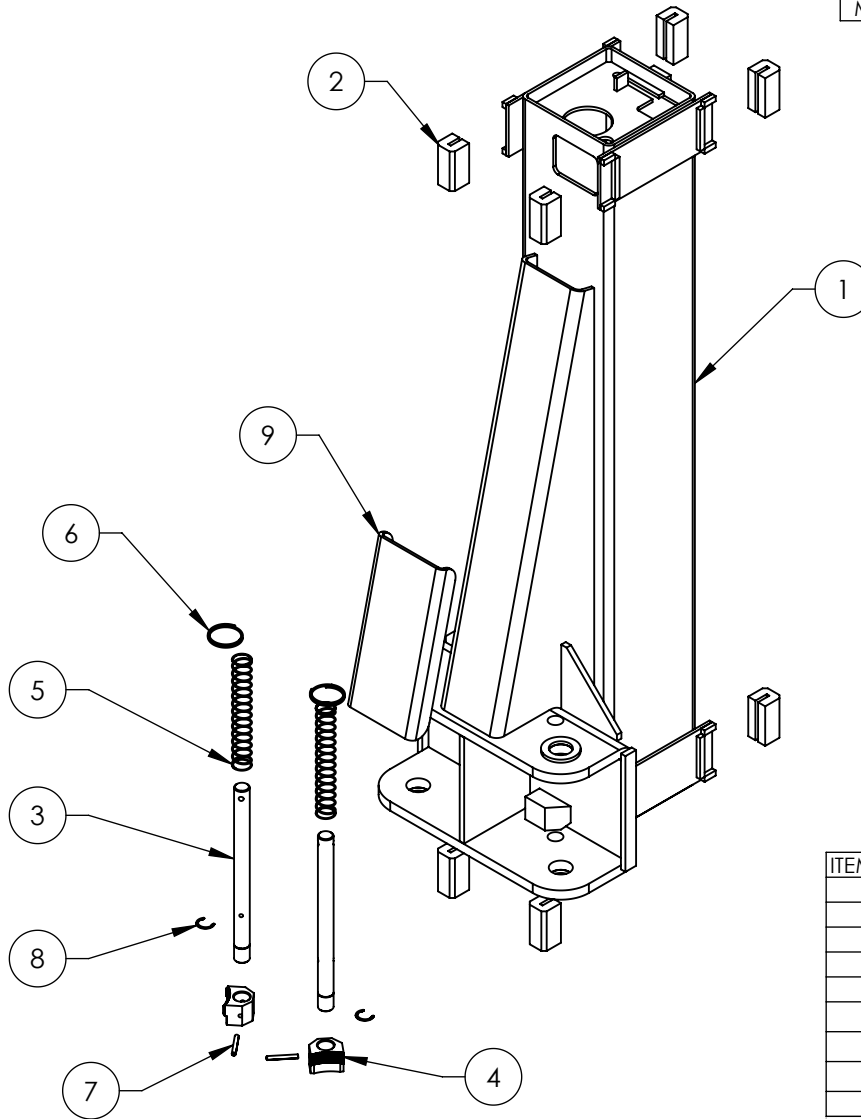
DO NOT SCALE DRAWING		NAME		DATE		<div> 1645 LEMONWOOD DR. SANTA PAULA, CA 93060</div>		
DIMENSIONS ARE IN MM		DRAWN		JM 06/23/2015				
		CHECKED						
<div></div>		THIRD ANGLE PROJECTION				TITLE: XPR-12CL/FDL TRIPLE TELESCOPING ARM ASSEMBLY		
		<div></div>				SIZE DWG. NO.		REV
		<div>PROPRIETARY AND CONFIDENTIAL THE INFORMATION CONTAINED IN THIS DRAWING IS THE SOLE PROPERTY OF BENDPAK INC. ANY REPRODUCTION IN PART OR AS A WHOLE WITHOUT THE WRITTEN PERMISSION OF BENDPAK INC. IS PROHIBITED.</div>				A 5215283		D
						SCALE: 1:5		SHEET 1 OF 1

NOTE: UNLESS OTHERWISE SPECIFIED.

- SEE SHIPPING INSTRUCTIONS FOR FINAL PACKAGING
- ASSEMBLE ITEMS AS SHOWN

NEXT ASSEMBLY
5260563
5260567
5260568

REVISION				
REV	DESCRIPTION	DATE	EDITED BY	ECO#
K	UPDATED BOM REVISION	06/03/2014	TM	00649
L	UPDATED BOM REVISION	05/14/2015	TM	00689
M	UPDATED BOM REVISION	11/12/2015	TM	00738



ITEM NO	PART NUMBER	DESCRIPTION	QTY	REV
1	5600393	XPR-12FD LIFT HEAD WELDMENT	1	J
2	5716001	PL-6000/7000, GP/XPR SERIES GUIDE BLOCK	8	E
3	5746099	XPR-12C/FD/15/18C Ø25mm LONG GEAR SHAFT	2	D
4	5701052	GP/RTL/XPR ARM INTERNAL GEAR STOP	2	E
5	5540130	XPR-12C/FD/15/18C LIFT HEAD SPRING	2	A
6	5580219	KEYRING 56mm x 3mm	2	-
7	5505106	SPRING PIN M6 x 50	2	-
8	5540006	SNAP RING TRUARC 5103-100	2	-
9	5930184	XPR-12/15/18 LIFT HEAD GUSSET COVER	1	C

DO NOT SCALE DRAWING

NAME DATE

DRAWN TM 11/27/2009

CHECKED CA 02/18/2016

DIMENSIONS ARE IN MM

THIRD ANGLE PROJECTION



PROPRIETARY AND CONFIDENTIAL
THE INFORMATION CONTAINED IN THIS DRAWING IS
THE SOLE PROPERTY OF BENDPAK INC. ANY
REPRODUCTION IN PART OR AS A WHOLE WITHOUT
THE WRITTEN PERMISSION OF BENDPAK INC. IS
PROHIBITED.

BendPak 1645 LEMONWOOD DR.
SANTA PAULA, CA 93060

TITLE: XPR-12FD LIFT
HEAD ASSEMBLY

SIZE DWG. NO. REV

A 5215290 M

SCALE: 1:12

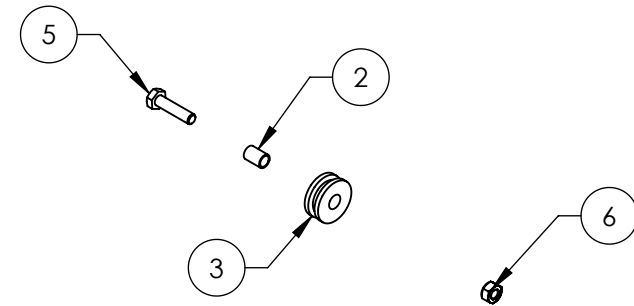
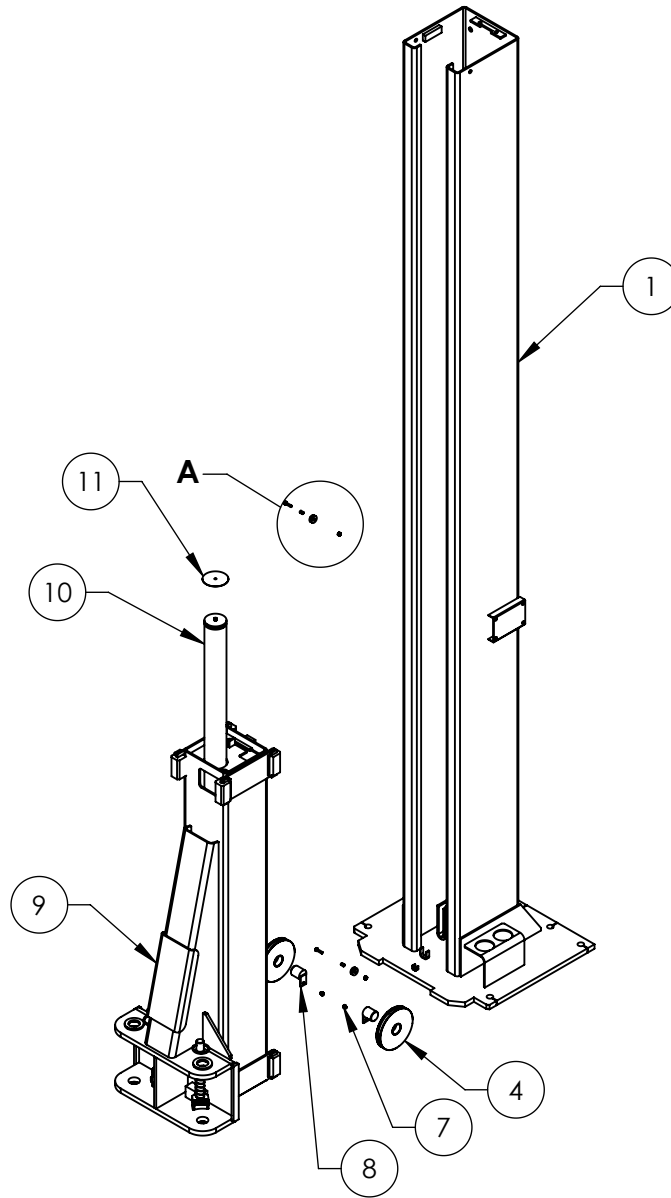
SHEET 1 OF 1

NOTE: UNLESS OTHERWISE SPECIFIED.

1. SEE SHIPPING INSTRUCTIONS FOR FINAL PACKAGING
2. ASSEMBLE ITEMS AS SHOWN

NEXT ASSEMBLY
5215233
5215356

REVISION				
REV	DESCRIPTION	DATE	EDITED BY	ECO#
T	UPDATED BOM REVISION	12/01/2014	TM	00673
U	UPDATED BOM REVISION	05/14/2015	TM	00689
V	UPDATED BOM REVISION	11/12/2015	TM	00738



DETAIL A
SCALE 1 : 4

ITEM NO	PART NUMBER	DESCRIPTION	QTY	REV
1	5600382	XPR-12FD POWER SIDE POST WELDMENT	1	H
2	5565350	GP/PCL/XPR/PL-7000 SAFETY SHEAVE SPACER	2	C
3	5575112	GP/PCL/XPR/PL-7000 SAFETY SHEAVE	2	C
4	5575113	XPR-12/15/18 SHEAVE ASSEMBLY	2	D
5	5530756	HHB M6 x 1 x 25	2	-
6	5535357	NUT M6 x 1.0 NL	2	-
7	5530030	HHB M6 x 1 x 8	2	B
8	5620142	XPR-12C/12FD/15/18C CABLE SHEAVE PIN WELDMENT	2	A
9	5215290	XPR-12FD LIFT HEAD ASSEMBLY	1	M
10	5502305	CYLINDER ASSEMBLY Ø2.5 x 69	1	E
11	5701717	XPR HEAVY DUTY CYLINDER STOPPER	1	A

DO NOT SCALE DRAWING

DIMENSIONS ARE IN MM



NAME DATE

DRAWN TM 11/19/2009

CHECKED CA 02/18/2016

THIRD ANGLE PROJECTION



PROPRIETARY AND CONFIDENTIAL
THE INFORMATION CONTAINED IN THIS DRAWING IS
THE SOLE PROPERTY OF BENDPAK INC. ANY
REPRODUCTION IN PART OR AS A WHOLE WITHOUT
THE WRITTEN PERMISSION OF BENDPAK INC. IS
PROHIBITED.

BendPak 1645 LEMONWOOD DR.
SANTA PAULA, CA 93060

TITLE: XPR-12FD POWER
SIDE POST ASSEMBLY

SIZE DWG. NO.

A 5215356

REV

V

SCALE: 1:25

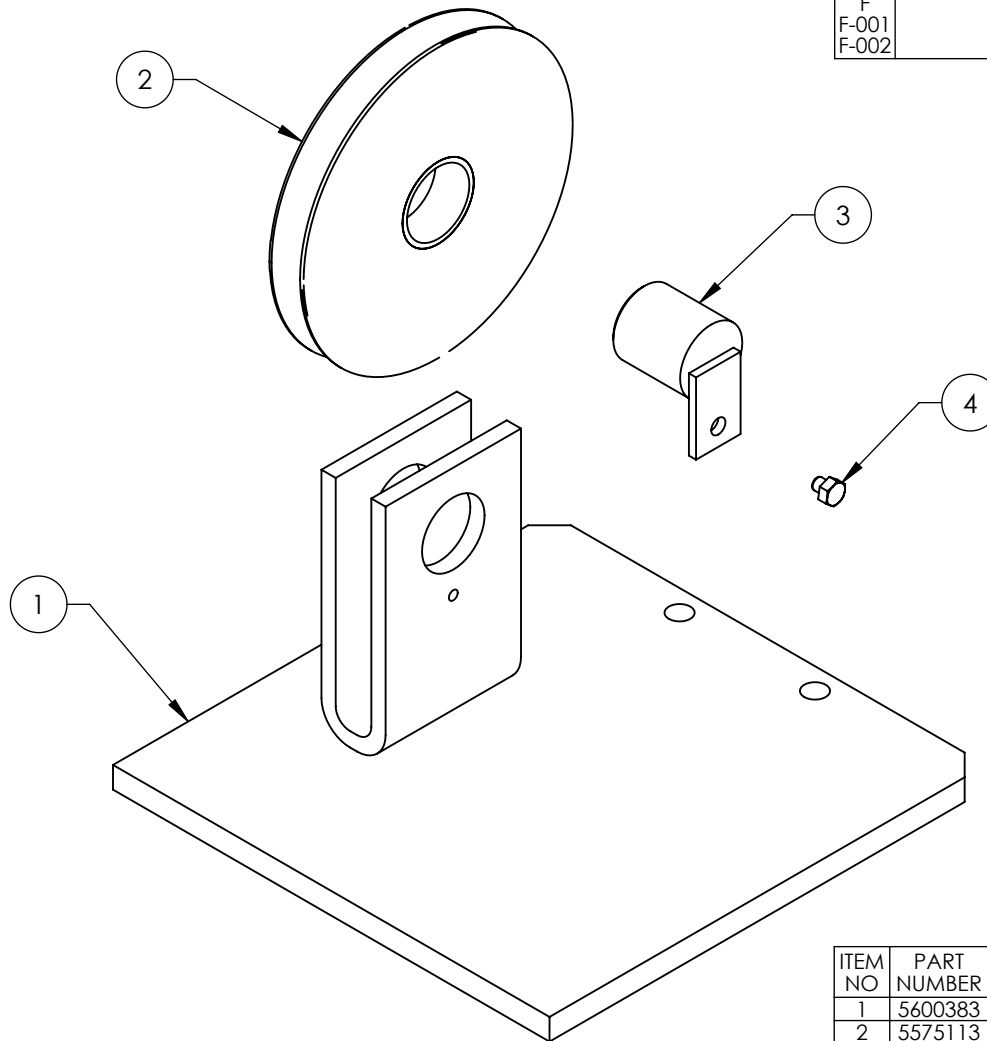
SHEET 1 OF 1

NOTE: UNLESS OTHERWISE SPECIFIED.




- SEE SHIPPING INSTRUCTIONS FOR FINAL PACKAGING
- ASSEMBLE ITEMS AS SHOWN

NEXT ASSEMBLY
5245137

REVISION				
REV	DESCRIPTION	DATE	EDITED BY	ECO#
D	UPDATED TITLE TO REFLECT WHERE USED, UPDATED BOM REVISIONS	02/17/2012	TM	00490
E	UPDATED BOM REVISION	05/21/2012	TM	00517
F	UPDATED BOM REVISION	08/22/2012	TM	00542
F-001	UPDATED NEXT ASSEMBLIES	07/02/2013	TM	00605
F-002	UPDATED NEXT ASSEMBLIES	12/16/2015	TM	00738



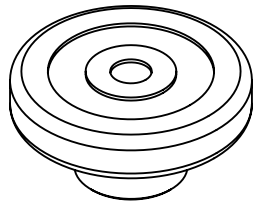
ITEM NO	PART NUMBER	DESCRIPTION	QTY	REV
1	5600383	XPR-12FD TOP EQUALIZER PULLEY PLATE WELDMENT	1	C
2	5575113	XPR-12/15/18 SHEAVE ASSEMBLY	1	D
3	5620142	XPR-12C/12FD/15/18C CABLE SHEAVE PIN WELDMENT	1	A
4	5530030	HHB M6 x 1 x 8	1	-

DO NOT SCALE DRAWING		NAME	DATE	 BendPak. 1645 LEMONWOOD DR. SANTA PAULA, CA 93060 <small>PROVIDING AUTOMATIC SERVICE SOLUTIONS</small>	
DRAWN		TM	04/22/2010		
CHECKED		CA	02/18/2016		
DIMENSIONS ARE IN MM 		THIRD ANGLE PROJECTION		TITLE:	
				XPR-12FD TOP EQUALIZER PULLEY PLATE ASSEMBLY	
		<p>PROPRIETARY AND CONFIDENTIAL</p> <p>THE INFORMATION CONTAINED IN THIS DRAWING IS THE SOLE PROPERTY OF BENDPAK INC. ANY REPRODUCTION IN PART OR AS A WHOLE WITHOUT THE WRITTEN PERMISSION OF BENDPAK INC. IS PROHIBITED.</p>		SIZE DWG. NO.	
Y			A 5215376		F
				SCALE: 1:3	SHEET 1 OF 1

NOTE: UNLESS OTHERWISE SPECIFIED.

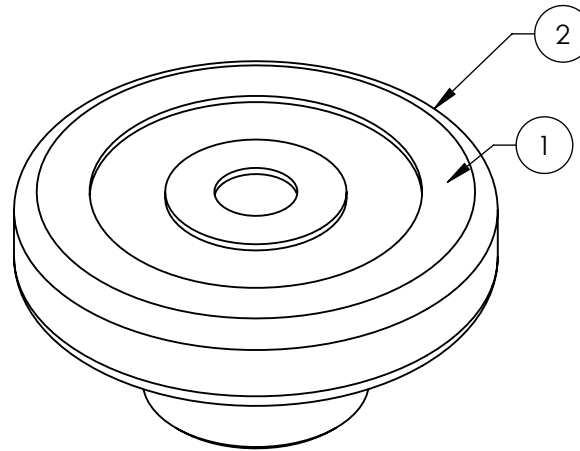
1. SEE SHIPPING INSTRUCTIONS FOR FINAL PACKAGING
2. ASSEMBLE ITEMS AS SHOWN

NEXT ASSEMBLY
5260568
5260570



ISOMETRIC VIEW
FOR REFERENCE ONLY
DO NOT SCALE

REVISION				
REV	DESCRIPTION	DATE	EDITED BY	ECO#
A	PRODUCTION RELEASE, DERIVED FROM 5215507	06/26/2015	JM	00708
A-001	UPDATED NEXT ASSEMBLIES	12/02/2015	TM	00738



NOTE: UNLESS OTHERWISE SPECIFIED.

1. SEE SHIPPING INSTRUCTIONS FOR FINAL PACKAGING
2. ASSEMBLE ITEMS AS SHOWN

ITEM NO	PART NUMBER	DESCRIPTION	QTY	REV
1	5600999	ROUND LIFT PAD WELDMENT	1	A
2	5715017	ROUND LIFT PAD ADAPTER RUBBER PAD	1	D

DO NOT SCALE DRAWING

NAME DATE

DRAWN JM 06/26/15
CHECKED CA 02/17/2016

BendPak. 1645 LEMONWOOD DR.
WORKING AUTOMOTIVE SERVICE EQUIPMENT SANTA PAULA, CA 93060

DIMENSIONS ARE IN MM

THIRD ANGLE PROJECTION



PROPRIETARY AND CONFIDENTIAL
THE INFORMATION CONTAINED IN THIS DRAWING IS
THE SOLE PROPERTY OF BENDPAK INC. ANY
REPRODUCTION IN PART OR AS A WHOLE WITHOUT
THE WRITTEN PERMISSION OF BENDPAK INC. IS
PROHIBITED.

TITLE: ROUND LIFT PAD
ADAPTER ASSEMBLY

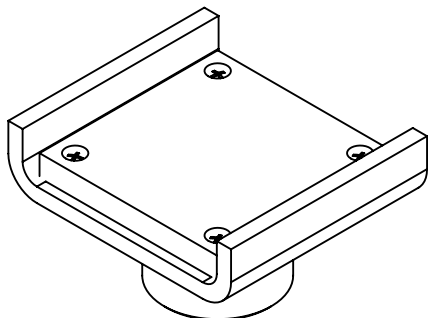
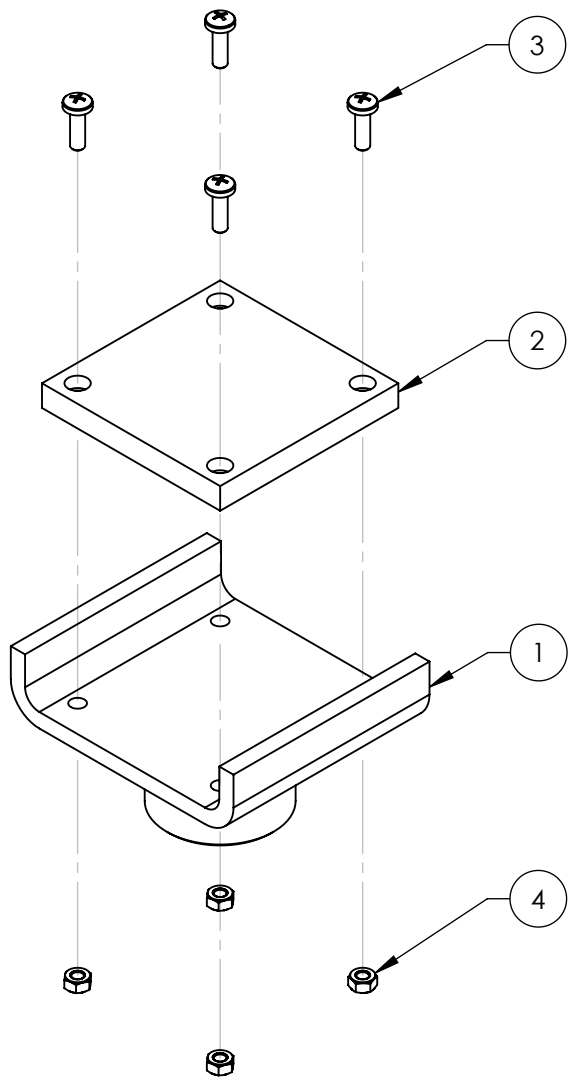
SIZE DWG. NO. REV
A 5215701 A

SCALE: 1:2

SHEET 1 OF 1

NEXT ASSEMBLY
5250038
5250045
5250046
5250047
5250080
5250113
5250041
5250042
5250043
5250044

REVISION				
REV	DESCRIPTION	DATE	EDITED BY	ECO#
A	PRODUCTION RELEASE, DERIVED FROM 5215506	06/24/15	JM	00708
B	UPDATED TITLE TO REFLECT MARKETING, UPDATED BOM REVISION AND NEXT ASSEMBLIES	12/03/2015	TM	00738



ISOMETRIC VIEW
FOR REFERENCE ONLY
DO NOT SCALE

ITEM NO	PART NUMBER	DESCRIPTION	QTY	REV
1	5601000	CRADLE LIFT PAD WELDMENT	1	A
2	5715020	CRADLE LIFT PAD LARGE RUBBER PAD	1	B
3	5530022	BPHS M6 x 1 x 20 ZPL	4	--
4	5535357	NUT M6 x 1.0 NL	4	--

DO NOT SCALE DRAWING

NAME DATE

DRAWN JM 06/24/2015

CHECKED CA 02/17/2016

BendPak 1645 LEMONWOOD DR.
SANTA PAULA, CA 93060

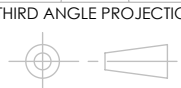
TITLE: CRADLE LIFT PAD
LARGE ADAPTER
ASSEMBLY

SIZE DWG. NO. REV
A 5215702 B

SCALE: 1:2 SHEET 1 OF 1

NEXT ASSEMBLY
5250041
5250042
5250043
5250044
5250045
5250046
5250047

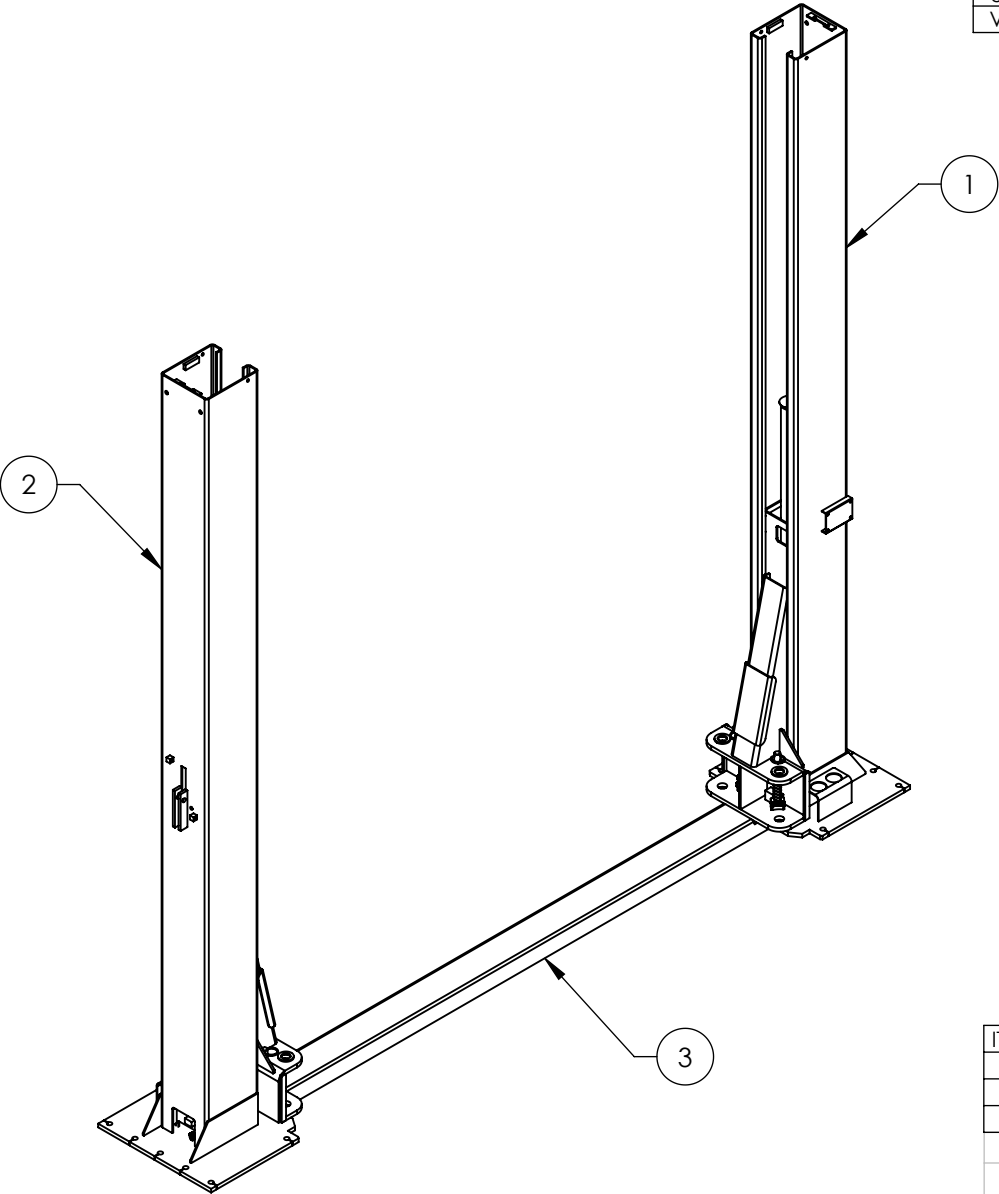
DIMENSIONS ARE IN MM






PROPRIETARY AND CONFIDENTIAL
THE INFORMATION CONTAINED IN THIS DRAWING IS
THE SOLE PROPERTY OF BENDPAK INC. ANY
REPRODUCTION IN PART OR AS A WHOLE WITHOUT
THE WRITTEN PERMISSION OF BENDPAK INC. IS
PROHIBITED.

NOTE: UNLESS OTHERWISE SPECIFIED.
1. SEE SHIPPING INSTRUCTIONS FOR FINAL PACKAGING
2. ASSEMBLE ITEMS AS SHOWN

REVISION				
REV	DESCRIPTION	DATE	EDITED BY	ECO#
T	UPDATED BOM REVISIONS	12/01/2014	TM	00673
U	UPDATED BOM REVISIONS	05/14/2015	TM	00689
V	UPDATED BOM REVISIONS AND NEXT ASSEMBLIES	12/08/2015	TM	00738



ITEM NO	PART NUMBER	DESCRIPTION	QTY	REV
1	5215356	XPR-12FD POWER SIDE POST ASSEMBLY	1	V
2	5215233	XPR-12FD OFF SIDE POST ASSEMBLY	1	U
3	5210047	XPR-12FD GROUND PLATE	1	C

DO NOT SCALE DRAWING		NAME	DATE	<div> 1645 LEMONWOOD DR. SANTA PAULA, CA 93060</div>	
DRAWN		TM	02/12/2010		
CHECKED		CA	02/23/2016		
DIMENSIONS ARE IN MM 		THIRD ANGLE PROJECTION		TITLE: XPR-12FD LIFT SUPERSTRUCTURE	
				SIZE DWG. NO. 5245137	
		<p>PROPRIETARY AND CONFIDENTIAL</p> <p>THE INFORMATION CONTAINED IN THIS DRAWING IS THE SOLE PROPERTY OF BENDPAK INC. ANY REPRODUCTION IN PART OR AS A WHOLE WITHOUT THE WRITTEN PERMISSION OF BENDPAK INC. IS PROHIBITED.</p>		REV V	
SCALE: 1:30				SHEET 1 OF 1	

NOTE: UNLESS OTHERWISE SPECIFIED.
1. SEE SHIPPING INSTRUCTIONS FOR FINAL PACKAGING

NEXT ASSEMBLY
5260568
5260570

REVISION				
REV	DESCRIPTION	DATE	EDITED BY	ECO#
A	PRODUCTION RELEASE, DERIVED FROM 5250190	12/15/2015	TM	00738
B	UPDATED BOM REVISIONS	03/23/2016	TM	00750

ITEM NO	PART NUMBER	DESCRIPTION	QTY	REV
1	5174114	XPR-9D/12FD PARTS BAG	1	H
2	5540281	C RING Ø38mm OD 5103-150	4	-
3	5210007	XPR POWER SIDE SAFETY ASSEMBLY	1	F
4	5210010	XPR OFF SIDE SAFETY WELDMENT	1	E
5	5715003	POWER UNIT VIBRATION DAMPENER	1	B
6	5215701	ROUND LIFT PAD ADAPTER ASSEMBLY	4	A
7	5736605	XPR-12 BOLT ON ARM RESTRAINT GEAR	4	E
8	5210009	XPR-9D/10/12/12FD/15/18C OFF SIDE SAFETY COVER	2	E
9	5746192	ARM ADAPTER, MEDIUM	4	-
10	5746193	ARM ADAPTER, LONG	4	C
11	5535011	NUT M22 x 2.5 NL	2	-
12	5545345	WASHER M22 x 50mm FLAT	2	B
13	5505346	XPR-12C/FD LIFT HEAD PIN WELDMENT	4	B
14	5595124	XPR-12-FD Ø2.4 x 7400 SAFETY CABLE	1	B
15	5570118	XPR-12FD HYDRAULIC HOSE ASSEMBLY Ø6.35 x 1562mm DS	2	C
16	5595070	XPR-12FD CABLE ASSY Ø12 x 10800mm	2	B
17	5570126	XPR-12FD HYDRAULIC HOSE ASSY Ø10 x 3150mm DS	1	C
18	5746166	DOUBLE THREADED ROD M10 x 1.5 x 295	2	B
19	5530308	AB 3/4" x 7"	14	-
20	5215702	CRADLE LIFT PAD LARGE ADAPTER ASSEMBLY	4	B
21	5900280	ALI/LP FRAME ENGAGING LIFTS GUIDE	1	-
22	5900152	ALIGN OIM OPERATION INSPECTION & MAINTENANCE	1	-
23	5900147	SAFETY MANUAL ALI / SM 93-1	1	-
24	5905151	SAFETY TIPS CARD ALI-ST 90	1	-
25	5900950	XPR-12FD INSTALLATION MANUAL	1	-

DO NOT SCALE DRAWING

NAME DATE

DRAWN TM 12/15/2015

CHECKED

THIRD ANGLE PROJECTION

DIMENSIONS ARE IN MM



PROPRIETARY AND CONFIDENTIAL
THE INFORMATION CONTAINED IN THIS DRAWING IS THE SOLE PROPERTY OF BENDPAK INC. ANY REPRODUCTION IN PART OR AS A WHOLE WITHOUT THE WRITTEN PERMISSION OF BENDPAK INC. IS PROHIBITED.

TITLE: XPR-12FDL/12FDL-LWB PARTS BOX

SIZE DWG. NO. REV

A 5250042 B

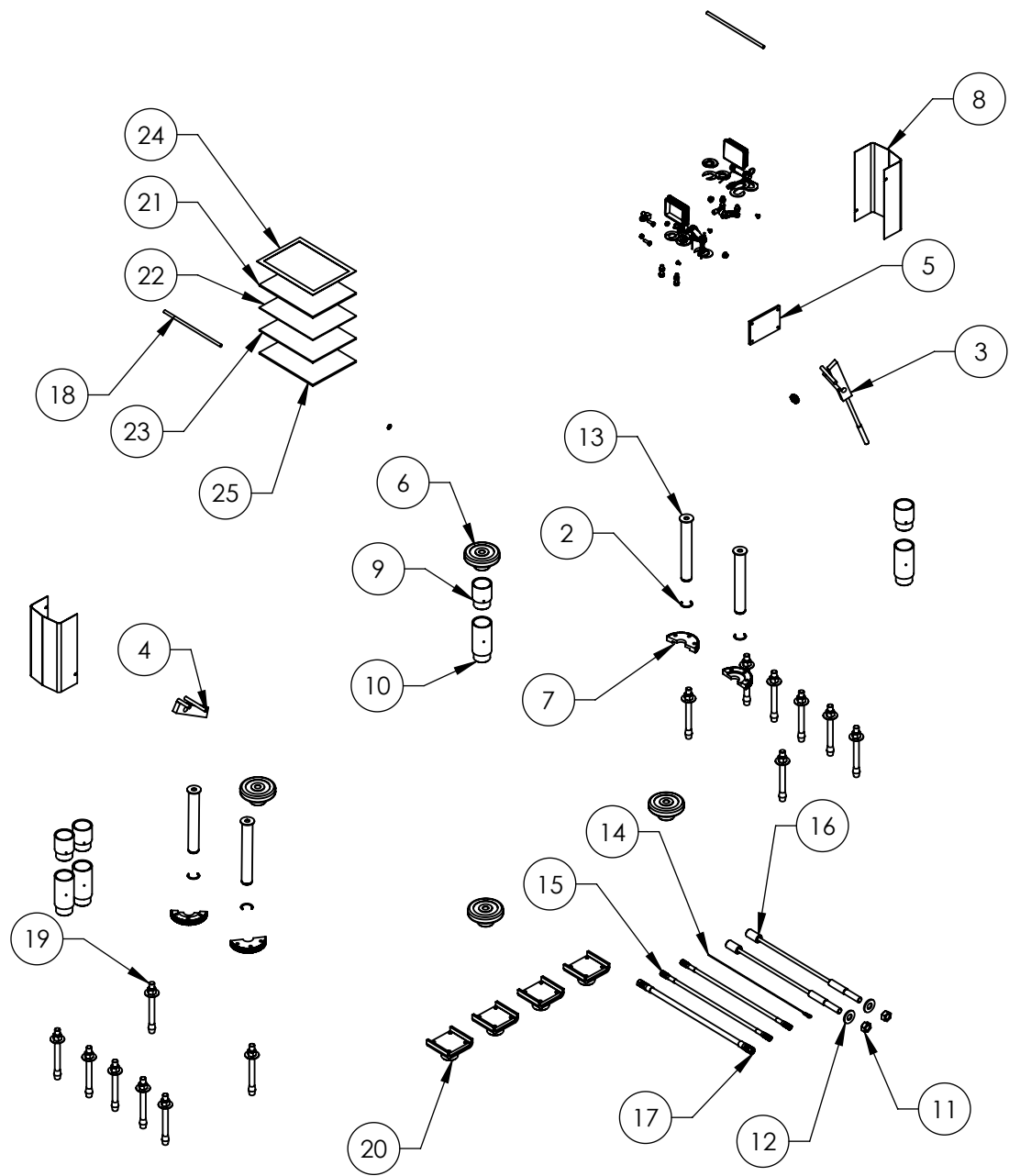
SCALE: 1:25

SHEET 1 OF 2

NOTE: UNLESS OTHERWISE SPECIFIED.

1. INSERT PARTS BAG INTO PARTS BOX FOR SHIPMENT
2. SEE SHIPPING INSTRUCTIONS FOR FINAL PACKAGING
3. THREAD 5535358 ONTO CABLES WITH 5545342 FOR SHIPMENT
4. HOSES AND CABLES IN REPRESENTATIONAL FORM

NEXT ASSEMBLY
5260568
5260570

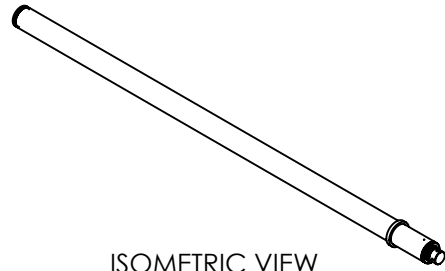


BendPak 1645 LEMONWOOD DR.
SANTA PAULA, CA 93060

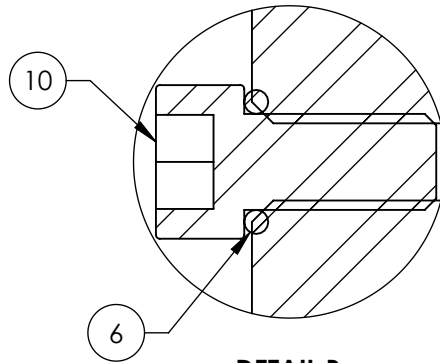
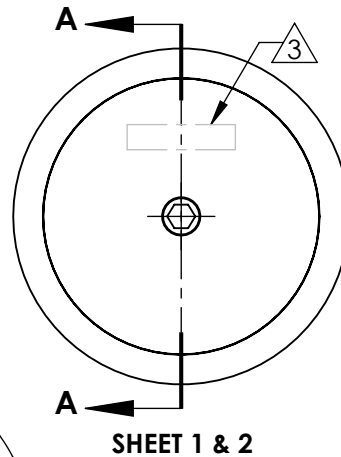
TITLE: XPR-12FDL/12FDL-LWB
PARTS BOX

SIZE	DWG. NO.	REV
A	5250042	B
SCALE: 1:25		SHEET 2 OF 2

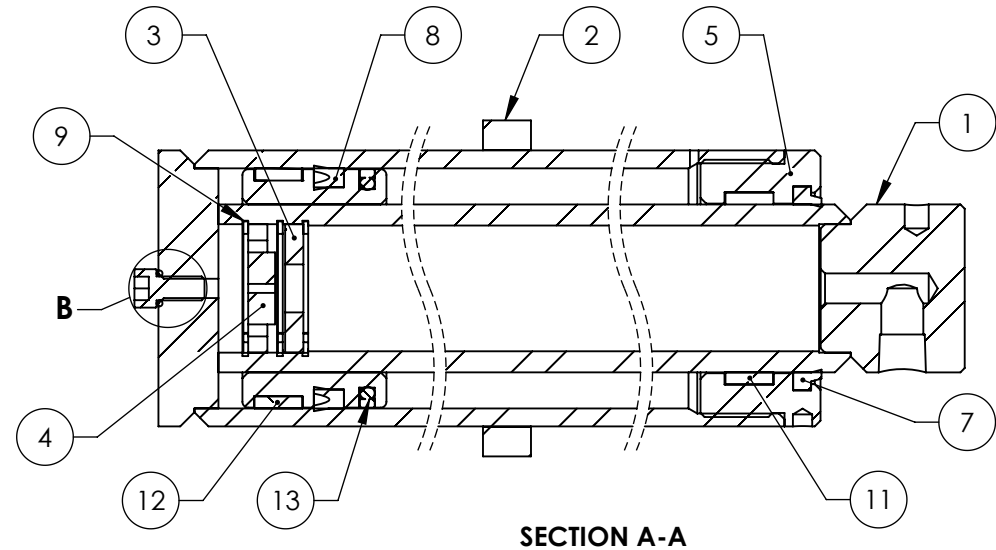
REVISION				
REV	DESCRIPTION	DATE	EDITED BY	ECO#
C	UPDATED BOM REVISION, CHANGED TEST PRESSURE TO 3600 psi	04/30/2012	TM	00517
D	UPDATED BOM REVISION	07/10/2012	TM	00534
E	REPLACED SOCS CR .25x20x.5 WITH 5585388, UPDATED STAMPED INFORMATION	12/23/2014	VB	00673



ISOMETRIC VIEW
FOR REFERENCE ONLY
DO NOT SCALE



DETAIL B
SCALE 2 : 1



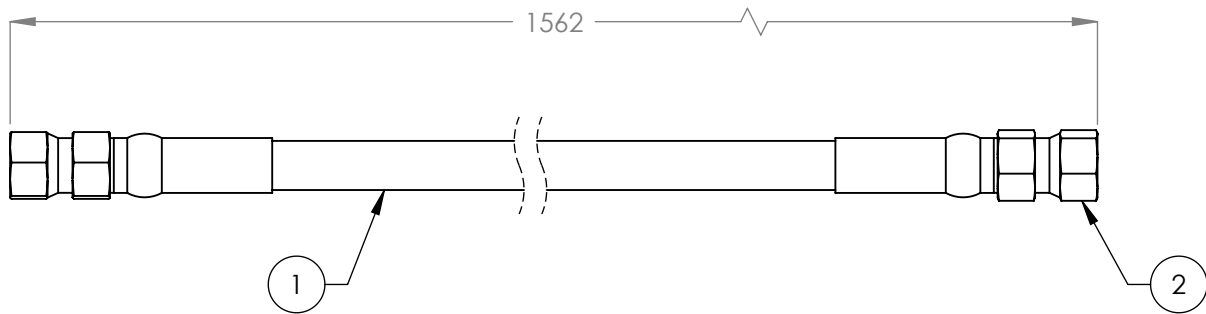
ITEM NO	PART NUMBER	DESCRIPTION	QTY	REV
1	700127	PISTON WELDMENT Ø2.5 x Ø1.75	1	D
2	700131	CYLINDER WELDMENT Ø2.5	1	C
3	700124	WASHER THROTTLE VALVE	1	B
4	700125	THROTTLE DIAPHRAGM Ø1.25	1	B
5	700121	HEAD CAP Ø2.5	1	C
6	-010 BUNA 70	O-RING	1	-
7	RECO D-1750	RECO D-1750	1	-
8	CUP SEAL UN 53.5-63.5	PISTON SEAL UN 53.5-63.57	1	-
9	Truarc N5000-131	INTERNAL RETAINING RING	3	-
10	5585388	SHCS 1/4-20 x 1/2"	1	-
11	WR-0200-0500-125	WEAR RING	1	-
12	WR 63.5-57.1-12.7 POM	WEAR RING	1	-
13	GLYD GS55044-0635	GLYD RING PISTON SEAL	1	-

NOTE: UNLESS OTHERWISE SPECIFIED.



- GREASE SEALS PRIOR TO ASSEMBLY
- PRESSURE TEST CYLINDER ASSEMBLY 100% TO 3,600 PSI. (NO LEAKS)
MARK IN APPROXIMATE LOCATION WITH THE FOLLOWING INFORMATION: MANUFACTURER
MONTH/YEAR
PART NUMBER
- DISOGRIN 002-141, HERCULES DPU18-2.12-31 OR PARKER 4615-UP-18702125-312 MAY BE USED IN PLACE OF CUP SEAL UN 53.5-63.5
- PARKER 4615-SHD-01750, HERCULES ST-175 OR AFM D-1750 MAY BE USED IN PLACE OF RECO D-1750
- TRELLEBORG GR2C02250-C320 MAY BE USED IN PLACE OF WR 63.5-57.1-12.7 POM
- HERCULES 612-200-050 MAY BE USED IN PLACE OF WR-0200-0500-125

DO NOT SCALE DRAWING		NAME	DATE
DRAWN		AC	05/20/2010
CHECKED		VB	12/23/2014
DIMENSIONS ARE IN INCHES		THIRD ANGLE PROJECTION	
		Proprietary and Confidential THE INFORMATION CONTAINED IN THIS DRAWING IS THE SOLE PROPERTY OF BENDPAK INC. ANY REPRODUCTION IN PART OR AS A WHOLE WITHOUT THE WRITTEN PERMISSION OF BENDPAK INC. IS PROHIBITED.	
		TITLE: CYLINDER ASSEMBLY Ø2.5 x 69 SIZE DWG. NO. A 5502305 SCALE: 1:2	
		REV	E
		SHEET 1 OF 2	

REVISION				
REV	DESCRIPTION	DATE	EDITED BY	ECO#
A	PRODUCTION RELEASE, DERIVED FROM 800393	08/26/2009	TM	00293
B	UPDATED TITLE TO REFLECT WHERE USED UPDATED NEXT ASSEMBLY	02/15/2012	TM	00490
B-001		07/02/2013	TM	00605
C	REPLACED 5570110 WITH 5570129 UPDATED NEXT ASSEMBLY	12/01/2014	TM	00673
C-001		12/15/2015	TM	00738



ITEM NO	PART NUMBER	DESCRIPTION	QTY	REV
1	5570129	Ø6.4 ID HYDRAULIC HOSE	1496mm*	-
2	5550325	FTG NPL Ø1/4 CRIMP x -04 JIC	2	-

DO NOT SCALE DRAWING		NAME	DATE	 1645 LEMONWOOD DR. SANTA PAULA, CA 93060	
DIMENSIONS ARE IN MM TOLERANCES: 0. = ±1.5 0.0 = ±1.0 0.00 = ±0.25 0.000 = ±0.13 ANGULAR: MACH±2° SURFACE FINISH 1.6 ISO Ra µm FOR MACHINED SURFACES UNLESS OTHERWISE SPECIFIED		DRAWN	TM 08/26/2009		
		CHECKED	CA 02/22/2016		
		THIRD ANGLE PROJECTION		TITLE: XPR-12FD HYDRAULIC HOSE ASSEMBLY Ø6.35 x 1562mm DS	
					
		PROPRIETARY AND CONFIDENTIAL THE INFORMATION CONTAINED IN THIS DRAWING IS THE SOLE PROPERTY OF BENDPAK INC. ANY REPRODUCTION IN PART OR AS A WHOLE WITHOUT THE WRITTEN PERMISSION OF BENDPAK INC. IS PROHIBITED.		SIZE DWG. NO.	
A 5570118				C	
SCALE: 1:2				SHEET 1 OF 1	

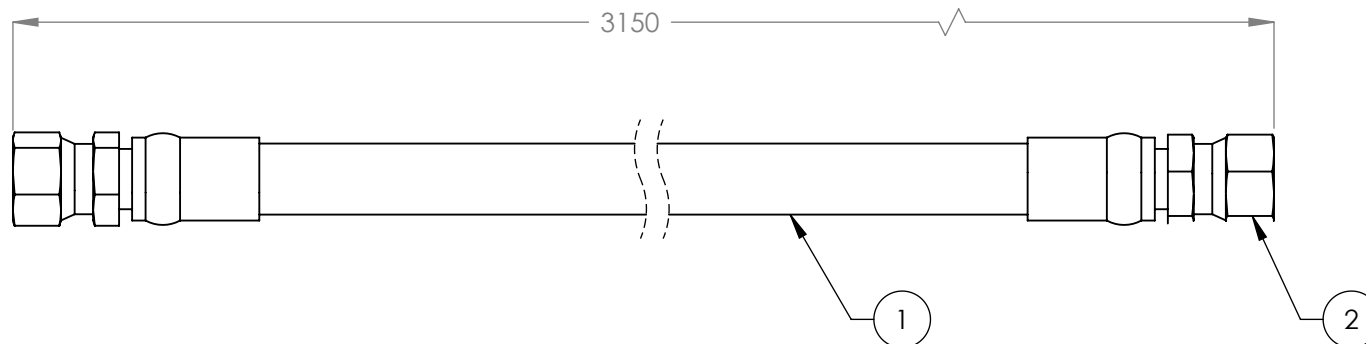
NOTE: UNLESS OTHERWISE SPECIFIED.

- FOR ITEM 1 SPECIFICATIONS REFER TO PART SPECIFICATION FORM
- (*)ITEM 1 QTY FOR REFERENCE ONLY



NEXT ASSEMBLY
5250042

PROPRIETARY AND CONFIDENTIAL
THE INFORMATION CONTAINED IN THIS DRAWING IS
THE SOLE PROPERTY OF BENDPAK INC. ANY
REPRODUCTION IN PART OR AS A WHOLE WITHOUT
THE WRITTEN PERMISSION OF BENDPAK INC. IS
PROHIBITED.

REVISION				
REV	DESCRIPTION	DATE	EDITED BY	ECO#
A	DERIVED FROM 800720, PRODUCTION RELEASE	10/15/2008	GJ	00220
B	UPDATED NEXT ASSEMBLY AND ADDED FITTING CALL OUT IN TITLE	01/11/2010	TM	00293
C	UPDATED TITLE TO REFLECT WHERE USED UPDATED NEXT ASSEMBLY UPDATED NEXT ASSEMBLY	02/15/2012	TM	00490
C-001		07/02/2013	TM	00605
C-002		12/15/2015	TM	00738



ITEM NO.	PART NUMBER	DESCRIPTION	QTY.	REV
1	5570116	Ø10 ID HYDRAULIC HOSE	3086mm*	-
2	5550336	FTG NPL -06 CRIMP x -06 JIC	2	-

DO NOT SCALE DRAWING		NAME	DATE	<div> BendPak <small>POWERING AUTOMOTIVE SERVICE SOLUTIONS</small></div> <div>1645 LEMONWOOD DR. SANTA PAULA, CA 93060</div>		
DRAWN		GJ	10/15/2008			
CHECKED		CA	02/22/2016			
<div>DIMENSIONS ARE IN MM TOLERANCES:</div> <div>0. = ±1.5 0.0 = ±1.0 0.00 = ±0.25 0.000 = ±0.13</div> <div>ANGULAR: MACH±2°</div> <div>SURFACE FINISH 1.6 ISO Ra µm FOR MACHINED SURFACES UNLESS OTHERWISE SPECIFIED</div>		THIRD ANGLE PROJECTION		<div>TITLE:</div> <div>XPR-12FD HYDRAULIC HOSE ASSY Ø10 x 3150mm DS</div>		
						
		<div>Y</div>		PROPRIETARY AND CONFIDENTIAL THE INFORMATION CONTAINED IN THIS DRAWING IS THE SOLE PROPERTY OF BENDPAK INC. ANY REPRODUCTION IN PART OR AS A WHOLE WITHOUT THE WRITTEN PERMISSION OF BENDPAK INC. IS PROHIBITED.		SIZE
				<div>A</div>	5570126	C
				SCALE: 1:2		SHEET 1 OF 1

NOTE: UNLESS OTHERWISE SPECIFIED.

- FOR ITEM 1 SPECIFICATIONS REFER TO PART SPECIFICATION FORM
- (*)ITEM 1 QTY FOR REFERENCE ONLY

NEXT ASSEMBLY
5250042

PART SPECIFICATION FORM

BENDPAK Number:	5570129
MRP Description:	1/4" HYDRAULIC HOSE 31CL-0400X
Date:	11/10/2015
ECO :	00734

1. Engineering Specification

Application:

1/4" HYDRAULIC HOSE

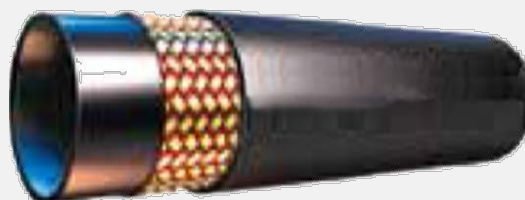
Detailed Description:

ONE or TWO BRAID STEEL WIRE HYDRAULIC HOSE

SIZE: 1/4" / 6.3mm I.D.
0.53" / 13.4mm O.D.

SPECS: 3000PSI OR 207 BAR WORKING PRESSURE
12000PSI OR 827 BAR MINIMUM BURST PRESSURE
2" / 50mm MIN BEND RADIUS

COLOR: BLACK



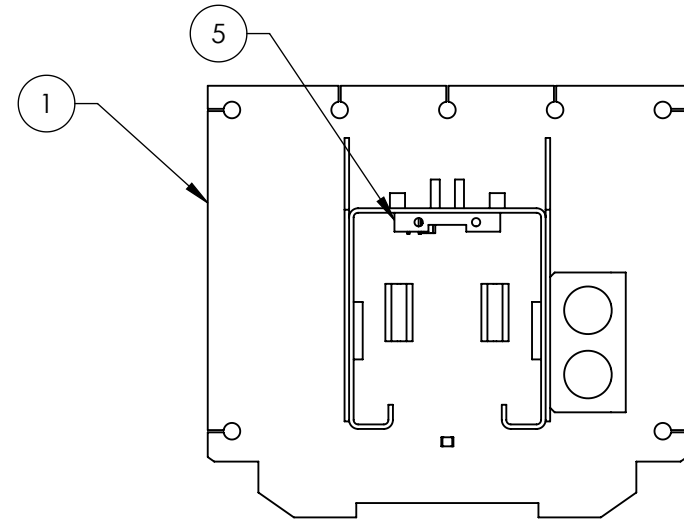
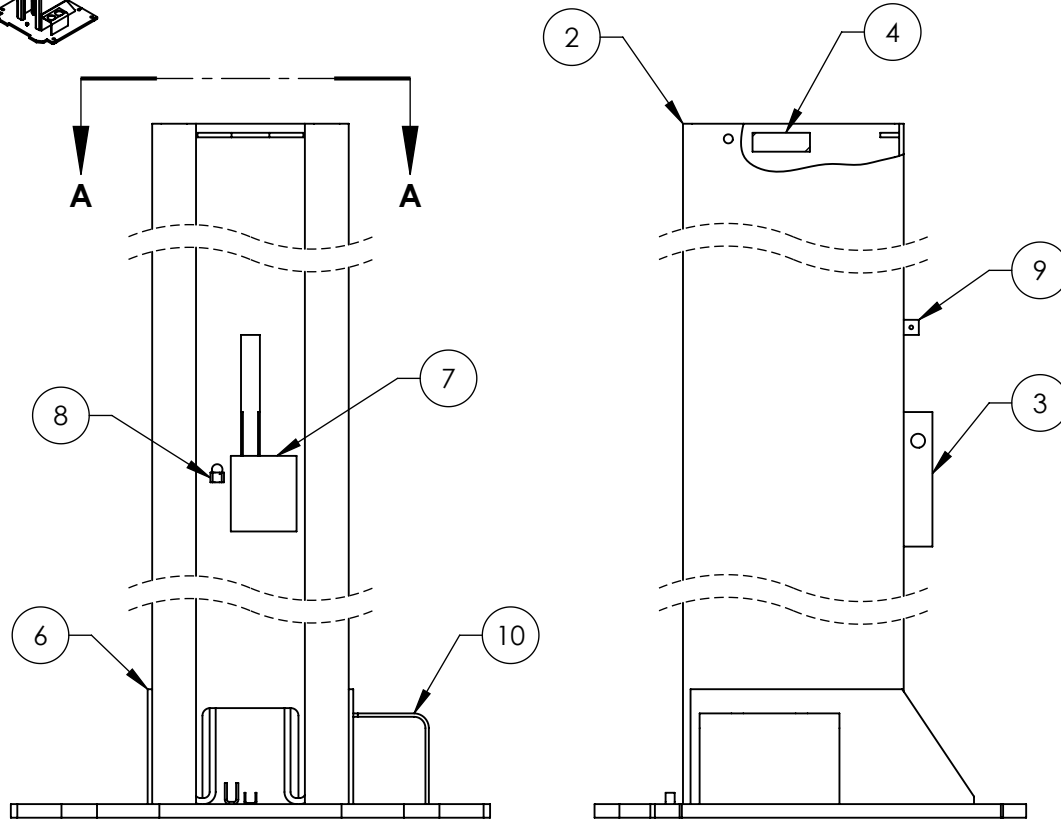
2. Vendor Information

Approved Vendor	Vendor Part #	Contact #	Preferred Vendor
1) PARKER	387-4	02283962772	
2)			
OR BENDPAK ENGINEERING APPROVED EQUIVALENT			

REVISION		DATE	EDITED BY	ECO#
REV	DESCRIPTION			
D	UPDATED BOM REVISION	06/17/2013	TM	00605
E	TIGHTENED TOLERANCE OF DISTANCE OF 5736635, UPDATED BOM REVISION	12/01/2014	TM	00673
F	ADDED 5730075	12/15/2015	TM	00738



ISOMETRIC VIEW
FOR REFERENCE ONLY
DO NOT SCALE



SECTION A-A

ITEM NO	PART NUMBER	DESCRIPTION	QTY	REV
1	5620372	XPR-12FD OFF SIDE BASE PLATE WELDMENT	1	C
2	5701301	XPR-12FD OFF SIDE BARE POST	1	D
3	5736635	RTL/XPR SAFETY RELEASE PLATE	2	C
4	5735700	XPR TOP TROUGH SUPPORT	2	C
5	5701457	XPR TOP TROUGH TIE PLATE	1	C
6	5730270	XPR-12/15/18 POST GUSSET	2	B
7	5735228	XPR STIFFENING PLATE	1	B
8	5210004	GP/PCL/XPR SAFETY SHEAVE CLAMP	1	C
9	5760001	SAFETY COVER BLOCK	2	C
10	5730075	XPR POST ASSEMBLY LIFT HEAD FOOT GUARD	1	A

DO NOT SCALE DRAWING

DIMENSIONS ARE IN MM
TOLERANCES:

0. = ± 1.5
0.0 = ± 0.5

ANGULAR: 0. = $\pm 2^\circ$

SURFACE FINISH 1.6 ISO Ra μ m
FOR MACHINED SURFACES
UNLESS OTHERWISE SPECIFIED

NAME DATE

DRAWN TM 11/18/2009

CHECKED CA 02/16/2016

THIRD ANGLE PROJECTION



PROPRIETARY AND CONFIDENTIAL
THE INFORMATION CONTAINED IN THIS DRAWING IS
THE SOLE PROPERTY OF BENDPAK INC. ANY
REPRODUCTION IN PART OR AS A WHOLE WITHOUT
THE WRITTEN PERMISSION OF BENDPAK INC. IS
PROHIBITED.

BendPak 1645 LEMONWOOD DR.
SANTA PAULA, CA 93060

TITLE: XPR-12FD OFF SIDE
POST WELDMENT

SIZE DWG. NO. REV

A 5600377 F

SCALE: 1:10

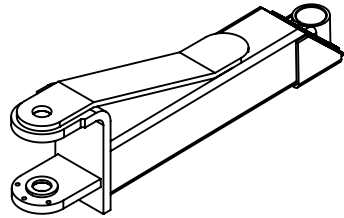
SHEET 1 OF 3

NOTE: UNLESS OTHERWISE SPECIFIED.

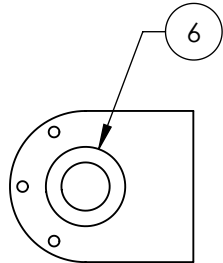
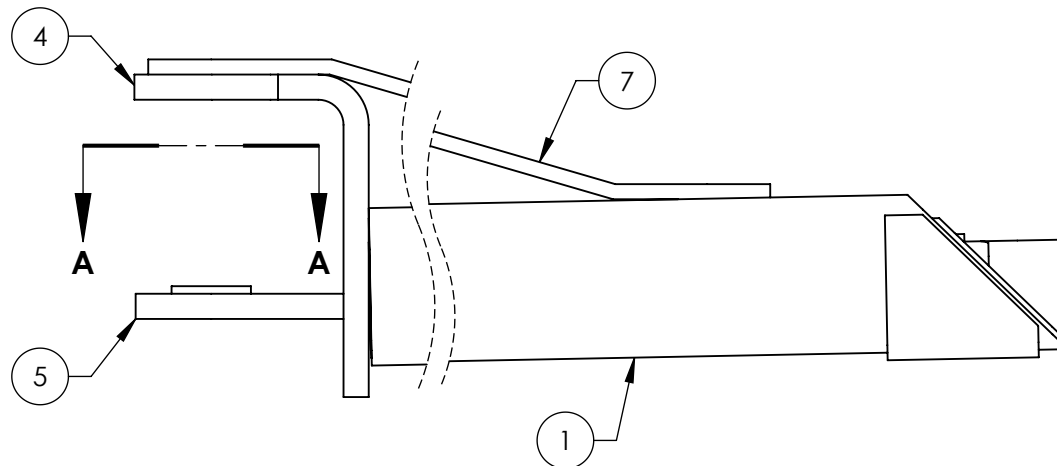
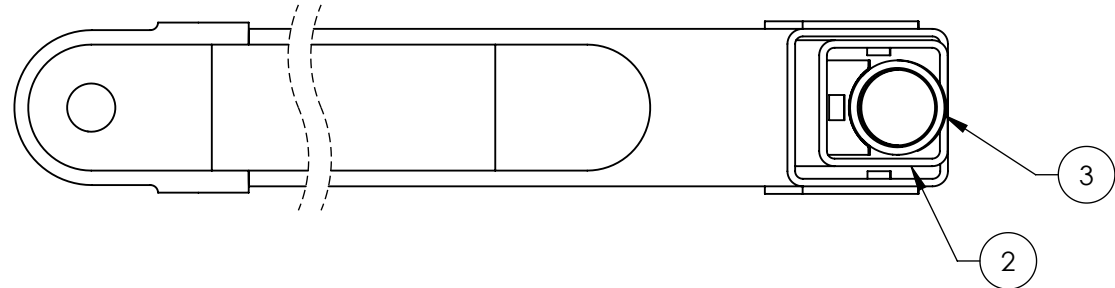
- BREAK AND DEBURR ALL SHARP EDGES 0.3mm
- REMOVE ALL WELD SPLATTER
- DIMENSIONS SHOWN ARE AFTER PAINTING
- PAINT BENDPAK BLUE

NEXT ASSEMBLY
5215233

REVISION				
REV	DESCRIPTION	DATE	EDITED BY	ECO#
B	UPDATED BOM REVISION	09/22/2015	TM	00729
C	UPDATED BOM REVISION	11/25/2015	TM	00738
D	UPDATED TITLE TO REFLECT WHERE USED, UPDATED BOM REVISION	02/19/2016	TM	00750





ISOMETRIC VIEW
FOR REFERENCE ONLY
DO NOT SCALE



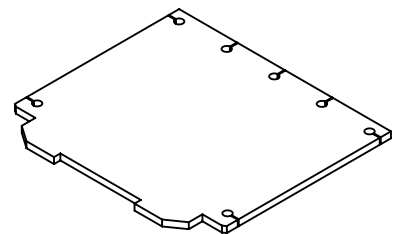
SECTION A-A

ITEM NO	PART NUMBER	DESCRIPTION	QTY	REV
1	5620355	XPR-12 TRIPLE ARM OUTER SQUARE TUBE WELDMENT 668mm	1	D
2	5620356	XPR-12 TRIPLE ARM MIDDLE SQUARE TUBE WELDMENT (668mm)	1	D
3	5620323	XPR-12 TRIPLE ARM INNER SQUARE TUBE WELDMENT (667.5mm)	1	C
4	5701240	XPR-12 ARM EAR	1	C
5	5701070	XPR-12C/FD BOLT ON ARM EAR	1	C
6	5746564	XPR-9/10/12 REINFORCING WASHER	1	E
7	5736284	XPR-12 ARM SUPPORT	1	D

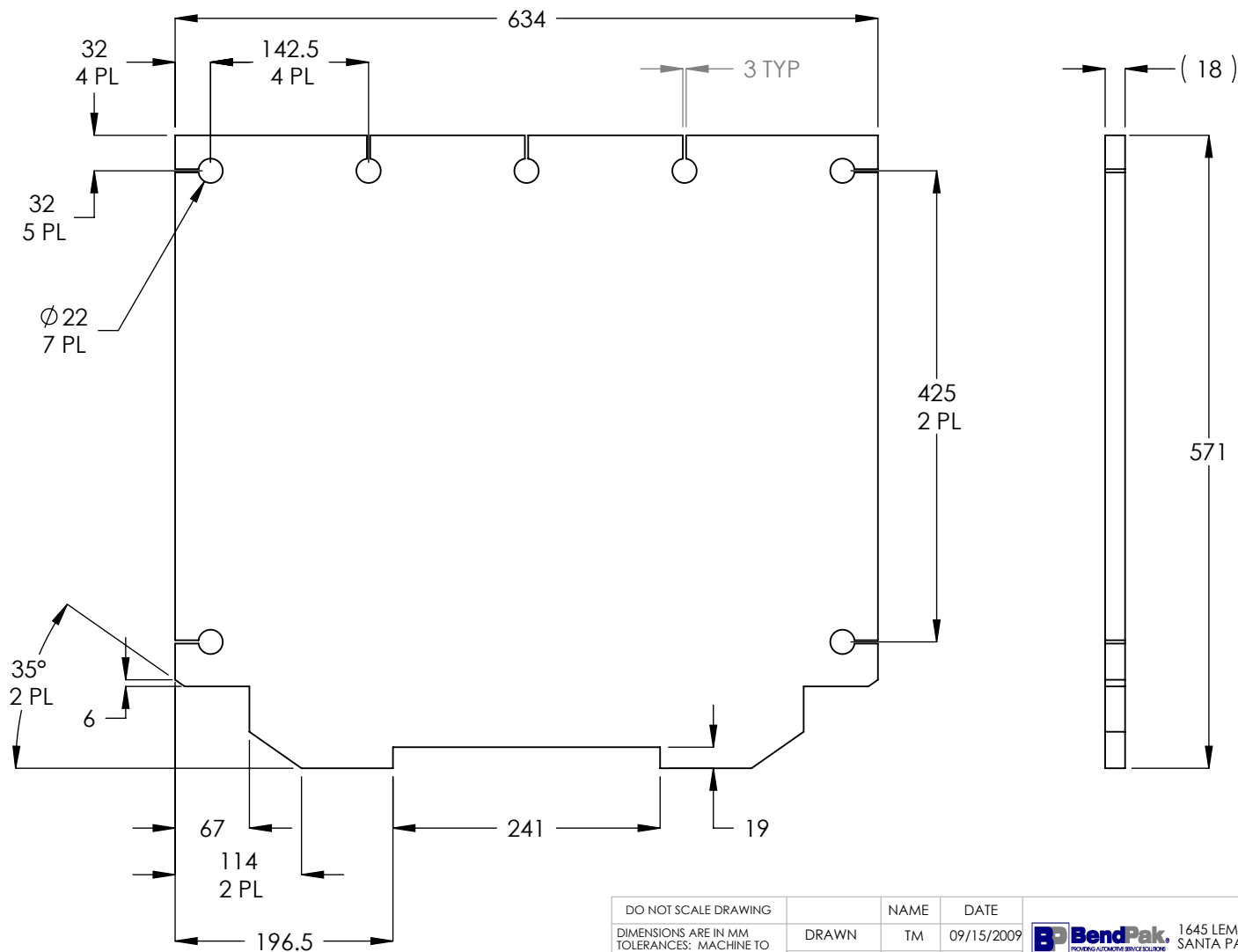
DO NOT SCALE DRAWING		NAME	DATE	 1645 LEMONWOOD DR. SANTA PAULA, CA 93060		
DRAWN		JM	06/23/2015			
CHECKED						
DIMENSIONS ARE IN MM TOLERANCES: MACHINE TO 0. = ±1.5 0.0 = ±0.5 0.00 = ±0.13 ANGULAR: MACHINE TO 0. = ±1/2° SURFACE FINISH 1.6 ISO Ra µm FOR MACHINED SURFACES UNLESS OTHERWISE SPECIFIED		THIRD ANGLE PROJECTION		TITLE:		
				XPR-12CL/FDL TRIPLE TELESCOPING ARM WELDMENT		
Y		<p>PROPRIETARY AND CONFIDENTIAL</p> <p>THE INFORMATION CONTAINED IN THIS DRAWING IS THE SOLE PROPERTY OF BENDPAK INC. ANY REPRODUCTION IN PART OR AS A WHOLE WITHOUT THE WRITTEN PERMISSION OF BENDPAK INC. IS PROHIBITED.</p>		SIZE	DWG. NO.	REV
				A	5600993	D
		SCALE: 1:6		SHEET 1 OF 2		

NOTE: UNLESS OTHERWISE SPECIFIED.








1. BREAK AND DEBURR ALL SHARP EDGES 0.3mm
2. REMOVE ALL WELD SPLATTER
3. DIMENSIONS SHOWN ARE AFTER PAINTING
4. PAINT BENDPAK YELLOW
5. 5620356 & 5620323 MUST SLIDE FREELY



ISOMETRIC VIEW
FOR REFERENCE ONLY
DO NOT SCALE



REVISION				
REV	DESCRIPTION	DATE	EDITED BY	ECO#
A	PRODUCTION RELEASE, DERIVED FROM 800725	09/16/2009	TM	00293
B	ADDED RECTANGULAR CUTS	03/21/2011	TM	00449

DO NOT SCALE DRAWING		NAME	DATE	 BendPak 1645 LEMONWOOD DR. SANTA PAULA, CA 93060	
DIMENSIONS ARE IN MM TOLERANCES: MACHINE TO 0. = ±1.5 0.0 = ±0.5 0.00 = ±0.13		DRAWN	TM 09/15/2009		
ANGULAR: MACHINE TO 0. = ±½°		CHECKED	MT 03/30/2011		
SURFACE FINISH 1.6 ISO Ra µm FOR MACHINED SURFACES UNLESS OTHERWISE SPECIFIED		THIRD ANGLE PROJECTION		TITLE:	
MATERIAL: HR ASTM A36 OR Q235 GB/T 700				XPR-12C/FD/15/18C BASE PLATE	
SIZE: 18mm THICK				SIZE DWG. NO.	REV
NEXT ASSEMBLY				A 5736526	B
5620358				SCALE: 1:6	
5620372				SHEET 1 OF 1	
5620373					

NOTE: UNLESS OTHERWISE SPECIFIED.

- BREAK AND DEBURR ALL SHARP EDGES 0.3mm

PART SPECIFICATION FORM

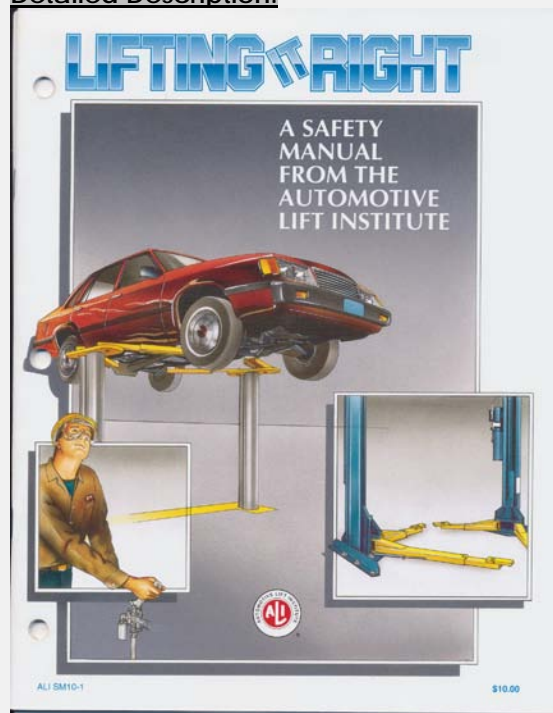
BENDPAK Number:	5900147
MRP Description:	SAFETY MANUAL ALI / SM 93-1
Date:	12/28/2010
ECO :	00431

1. Engineering Specification

Application:

ALI SAFETY MANUAL

Detailed Description:



2. Vendor Information

Approved Vendor	Vendor Part #	Contact #	Preferred Vendor
1)			

PART SPECIFICATION FORM

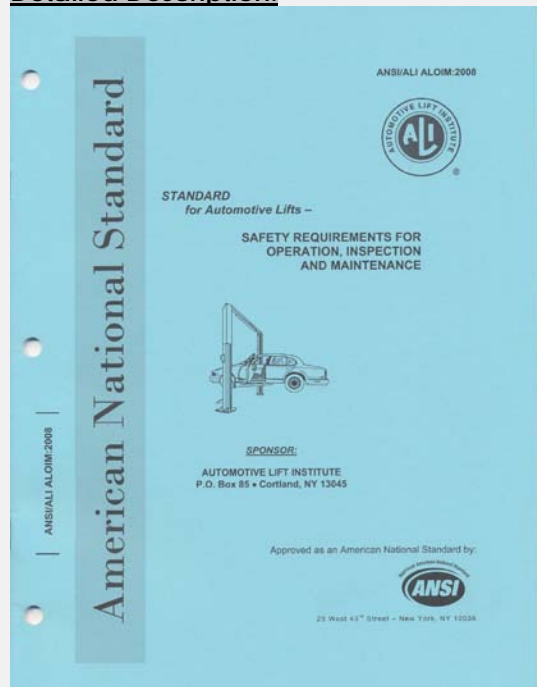
BENDPAK Number:	5900152
MRP Description:	ALIGN OIM OPERATION INSPECTION & MAINTENANCE
Date:	12/28/2010
ECO :	00431

1. Engineering Specification

Application:

ALI OPERATION INSPECTION & MAINTENANCE MANUAL

Detailed Description:



2. Vendor Information

Approved Vendor	Vendor Part #	Contact #	Preferred Vendor
1)			

PART SPECIFICATION FORM

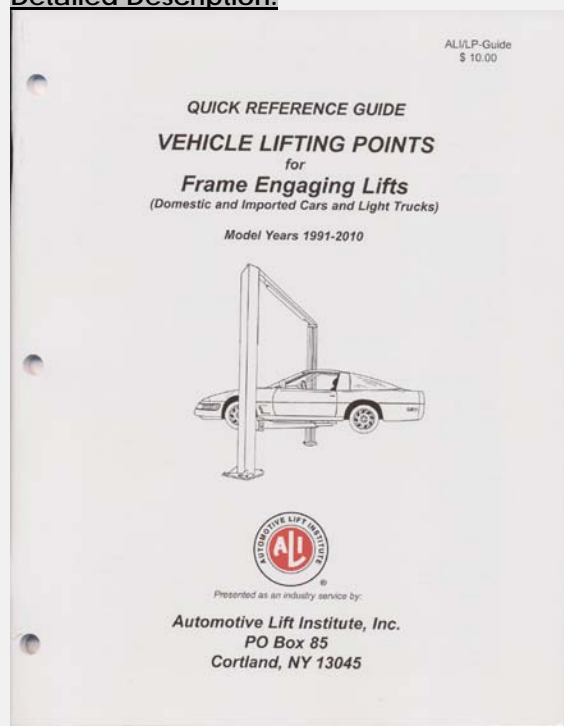
BENDPAK Number:	5900280
MRP Description:	ALI/LP FRAME ENGAGING LIFTS GUIDE
Date:	12/28/2010
ECO :	00431

1. Engineering Specification

Application:

ALI LIFTING GUIDE

Detailed Description:



2. Vendor Information

Approved Vendor	Vendor Part #	Contact #	Preferred Vendor
1)			

PART SPECIFICATION FORM

BENDPAK Number:	5900950
MRP Description:	XPR-12FD INSTALLATION MANUAL
Date:	07/11/2013
ECO :	00605

1. Engineering Specification

Application:

INSTALLATION MANUAL

Detailed Description:

WARNING

CAUTION

The safe operating temperature range for this product is 41°F - 104°F.

IMPORTANT SAFETY INSTRUCTIONS
SAVE THESE INSTRUCTIONS

PLEASE READ THE ENTIRE CONTENTS OF THIS MANUAL PRIOR TO INSTALLATION AND OPERATION. BY PROCEEDING WITH LIFT INSTALLATION AND OPERATION YOU AGREE THAT YOU FULLY UNDERSTAND AND COMPREHEND THE FULL CONTENTS OF THIS MANUAL. FORWARD THIS MANUAL TO ALL OPERATORS. FAILURE TO OPERATE THIS EQUIPMENT AS DIRECTED MAY CAUSE INJURY OR DEATH.

MAN-REV A 06-10-2013
RPN 0800720

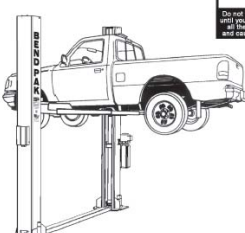
INSTALLATION AND OPERATION MANUAL

9,000 POUND CAPACITY
SURFACE MOUNTED
TWO-POST LIFTS

MODELS:
XPR-12FD VER A
XPR-12FD-LWB VER A

READ FIRST

Do not use this lift structure until the feet are extended and casters in the manual.



RECEIVING
The shipment should be thoroughly inspected as soon as it is received. The signed Bill of Lading is acknowledgement by the shipping carrier as receipt of this product as listed in your invoice as being in a good condition of shipment. If any of these goods listed on this Bill of Lading are missing or damaged, do not accept goods until the shipping carrier makes a notation on the freight bill of the missing or damaged goods. Do this for your own protection.

BE SAFE
Your new lift was designed and built with safety in mind. However, your overall safety can be increased with proper training and thoughtful operation on the part of the operator. DO NOT operate or repair this equipment without reading this manual and the important safety instructions shown inside. Keep this operation manual near the lift at all times. Make sure that ALL USERS read and understand this manual.

1645 Lemonwood Dr.
Santa Paula, CA. 93060, USA
Toll Free 1-800-253-2263
Tel: 1-805-933-9970
Fax: 1-805-933-9160
www.bendpak.com

2. Vendor Information

Approved Vendor	Vendor Part #	Contact #	Preferred Vendor
1)			

PART SPECIFICATION FORM

BENDPAK Number:	5905109
MRP Description:	WARNING ALI/WL 101
Date:	06/18/2013
ECO :	00605

1. Engineering Specification

Application:

ALI 2 POST SAFETY STICKER KIT

Detailed Description:

SIZE: 14" L x 8.5" W (356mm x 216mm)

Automotive Lift Institute, Inc
WL 101 Series
Label Kit

SAFETY INSTRUCTIONS

Read operating and safety manuals before using lift.

SAFETY INSTRUCTIONS

Proper maintenance and inspection is necessary for safe operation.

SAFETY INSTRUCTIONS

Do not operate a damaged lift.

The messages and pictographs shown are generic in nature and are meant to generally represent hazards common to all automotive lifts regardless of specific style.

Funding for the development and validation of these labels was provided by the Automotive Lift Institute, PO Box 33116 Indianapolis, IN 46233.

They are provided by copyright. Set of labels may be obtained from ALI or its member companies.

© 1992 by ALI, Inc. ALI/WL101

2. Vendor Information

Approved Vendor	Vendor Part #	Contact #	Preferred Vendor
1)			

PART SPECIFICATION FORM

BENDPAK Number:	5905177
MRP Description:	TO PROLONG LIFT OF TWO
Date:	06/18/2013
ECO :	00605

1. Engineering Specification

Application:

RED CYLINDER WARNING

Detailed Description:

SIZE: 3" L x 1.75" W (76mm x 44mm)

PLEASE READ

Internal packing oil may cause the cylinders to bleed oil during start up. This is normal. To extend cylinder and seal life, raise the lift to full height at least once every day.

2. Vendor Information

Approved Vendor	Vendor Part #	Contact #	Preferred Vendor
1)			

PLEASE READ

Internal packing oil may cause the cylinders to bleed oil during start up. This is normal. To extend cylinder and seal life, raise the lift to full height at least once every day.

PART SPECIFICATION FORM

BENDPAK Number:	5905311
MRP Description:	BENDPAK LABEL; 4 x 38" WHITE INK
Date:	05/13/2015
ECO :	00689

1. Engineering Specification

Application:

BENDPAK LABEL

Detailed Description:



SIZE: 38" L x 4.25" W (965mm x 108mm)

- Material: Yellow Represents Clear Adhesive PET
- Size: 4.25"W x 38"H
- Thickness: 4 Mil
- Finish: Polished
- Ink: U.V. protected, Opaque White
- Print Process: Silk Screen, 85 line-screen (Opaque White ink, clear adhesive PET will fill in blank areas.)
- Lamination: Clear-gloss over-laminate for abrasion, chemical, and ultra violet protection

2. Vendor Information

Approved Vendor	Vendor Part #	Contact #	Preferred Vendor
1)			

B

E

N

D

P

A

K

BendPak

ABOVE-GROUND LIFTS



BendPak®
PROVIDING AUTOMOTIVE SERVICE SOLUTIONS



1645 Lemonwood Drive
Santa Paula, CA 93060
U.S.A.

(805) 933-9970

www.bendpak.com

P/N 5905311

PART SPECIFICATION FORM

BENDPAK Number:	5905404
MRP Description:	MAX CAP DANGER 12K
Date:	06/19/2013
ECO :	00605

1. Engineering Specification

Application:

LIFT CAPACITY STICKER

Detailed Description:



SIZE: 3.25" L x 4.5" W (82mm x 114mm)

2. Vendor Information

Approved Vendor	Vendor Part #	Contact #	Preferred Vendor
1)			

DANGER

THE MAXIMUM LIFTING CAPACITY FOR THIS LIFT IS DESCRIBED BELOW

Maximum Lifting Capacity

12,000 lbs. / 5443 kg

Max. Lifting Cap. / Front of Lift Center

6000 lbs. / 2722 kg

Max. Lifting Cap. / Rear of Lift Center

6000 lbs. / 2722 kg

Exceeding the weight capacity of this lift can damage lift and/or property and may cause personal harm, injury or death to operators and/or bystanders. All vehicles MUST be positioned on lift with CENTER OF GRAVITY midway between adapters and/or centered on runways. Damage to lift due to overloading or misuse IS NOT covered under warranty.

PART SPECIFICATION FORM

BENDPAK Number:	5905465
MRP Description:	MANUFACTURER LABEL
Date:	05/07/2013
ECO :	00593

1. Engineering Specification

Application:

MANUFACTURER LABEL

Detailed Description:

MFD. BY BENDPAK INC.

LIFT TYPE: SURFACE MOUNT CAPACITY: MED/HVY DTY
 POWER: ELECTRIC/HYDRAULIC ANCHORS: AS EQUIPPED
 INSTALLATION - SEE OWNERS GUIDE OR CONTACT FACTORY

SHIPPING DAMAGE CLAIMS

WHEN THIS EQUIPMENT IS SHIPPED, TITLE PASSES TO THE PURCHASER UPON RECEIPT FROM THE CARRIER. CONSEQUENTLY, CLAIMS FOR THE MATERIAL DAMAGED IN SHIPMENT MUST BE MADE BY THE PURCHASER AGAINST THE TRANSPORTATION COMPANY AT THE TIME SHIPMENT IS RECEIVED.

PLEASE READ ALL OPERATORS/USERS MANUAL(S) PRIOR TO INSTALLATION AND OPERATION. UNDERSTAND AND COMPREHEND THE FULL CONTENTS OF EACH MANUAL(S) PRIOR TO INSTALLATION AND OPERATION. DELIVER THE MANUAL(S) TO ALL OPERATORS. FAILURE TO OPERATE THIS EQUIPMENT AS DIRECTED MAY CAUSE INJURY OR DEATH.

IMPORTANT NOTE:

BENDPAK LIFTS ARE SUPPLIED WITH CONCRETE FASTENERS MEETING THE CRITERIA AS PRESCRIBED BY ASTM E488 - 96(2003). LIFT BUYERS ARE RESPONSIBLE FOR ANY SPECIAL REGIONAL STRUCTURAL AND/OR SEISMIC ANCHORING REQUIREMENTS SPECIFIED BY ANY OTHER AGENCIES AND/OR CODES SUCH AS THE UNIFORM BUILDING CODE (UBC) AND/OR INTERNATIONAL BUILDING CODE (IBC).



INTERNAL BAR CODE - FOR FACTORY AUDIT ONLY 34086

BPK	STYOT	P20KVR	X18576	HVY DTY/ GVR
				832

THE MANUFACTURE, USE, SALE OR IMPORT OF THIS PRODUCT MAY BE SUBJECT TO ONE OR MORE UNITED STATES PATENTS, OR PENDING APPLICATIONS, OWNED BY BENDPAK, INC.

ENGINEERED BY BENDPAK INC USA

MADE IN CHINA

SIZE: 5.125" L x 5.125" W (130mm x 130mm)

2. Vendor Information

Approved Vendor	Vendor Part #	Contact #	Preferred Vendor
1)			

MFD. BY BENDPAK INC.

LIFT TYPE: SURFACE MOUNT

CAPACITY: MED/HVY DTY

POWER: ELECTRIC/HYDRAULIC

ANCHORS: AS EQUIPPED

INSTALLATION - SEE OWNERS GUIDE OR CONTACT FACTORY

SHIPPING DAMAGE CLAIMS

WHEN THIS EQUIPMENT IS SHIPPED, TITLE PASSES TO THE PURCHASER UPON RECEIPT FROM THE CARRIER. CONSEQUENTLY, CLAIMS FOR THE MATERIAL DAMAGED IN SHIPMENT MUST BE MADE BY THE PURCHASER AGAINST THE TRANSPORTATION COMPANY AT THE TIME SHIPMENT IS RECEIVED.

PLEASE READ ALL OPERATORS/USERS MANUAL(S) PRIOR TO INSTALLATION AND OPERATION. UNDERSTAND AND COMPREHEND THE FULL CONTENTS OF EACH MANUAL(S) PRIOR TO INSTALLATION AND OPERATION. DELIVER THE MANUAL(S) TO ALL OPERATORS. FAILURE TO OPERATE THIS EQUIPMENT AS DIRECTED MAY CAUSE INJURY OR DEATH.

IMPORTANT NOTE:

BENDPAK LIFTS ARE SUPPLIED WITH CONCRETE FASTENERS MEETING THE CRITERIA AS PRESCRIBED BY ASTM E488 - 96(2003). LIFT BUYERS ARE RESPONSIBLE FOR ANY SPECIAL REGIONAL STRUCTURAL AND/OR SEISMIC ANCHORING REQUIREMENTS SPECIFIED BY ANY OTHER AGENCIES AND/OR CODES SUCH AS THE UNIFORM BUILDING CODE (UBC) AND/OR INTERNATIONAL BUILDING CODE (IBC).



INTERNAL BAR CODE - FOR FACTORY AUDIT ONLY 34086

BPK

STYOT

P20KVR

X18576

HVY DTY/ GVR
832

THE MANUFACTURE, USE, SALE OR IMPORT OF THIS PRODUCT MAY BE SUBJECT TO ONE OR MORE UNITED STATES PATENTS, OR PENDING APPLICATIONS, OWNED BY BENDPAK, INC.

ENGINEERED BY BENDPAK INC USA

MADE IN CHINA

PART SPECIFICATION FORM

BENDPAK Number:	5905555
MRP Description:	2-POST SAFETY DECAL
Date:	06/18/2013
ECO :	00605

1. Engineering Specification

Application:

2-POST SAFETY DECAL

Detailed Description:



SIZE: 28.5" L x 4" W (724mm x 100mm)

2. Vendor Information

Approved Vendor	Vendor Part #	Contact #	Preferred Vendor
1)			

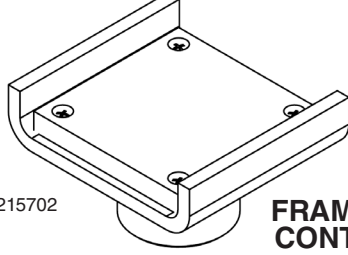
DANGER



Long wheelbase vehicles can damage lift and/or cause personal harm or injury to operators if loaded incorrectly.

All vehicles MUST be positioned on lift with CENTER OF GRAVITY midway between adapters.

DANGER



SKU# 5215702

**FRAME CRADLE
CONTACT PADS**

USE PROPER ADAPTERS

Do not attempt to lift trucks or other frame type vehicles with standard flat contact pads. Frame cradle contact pads are recommended for use when lifting trucks, vans, or other frame vehicles. **NEVER** use lift with missing or damaged rubber pads. **ALWAYS REPLACE** rubber contact pads when worn or damaged. Contact BendPak or your BendPak dealer for product information.

WARNING

WIRE ROPE INSPECTION AND MAINTENANCE

- Lifting cables should be replaced every (3) three years or when visible signs of damage are apparent. **DO NOT USE LIFT WITH DEFECTIVE OR WORN CABLES.**
- Wire rope should be maintained in a well-lubricated condition at all times. Wire rope is only fully protected when each wire strand is lubricated both internal and external. Excessive wear will shorten the life of the wire rope. The factory suggests wire rope lubricant that penetrates to the core of the rope and provides long-term lubrication between each individual strand. In order to make sure that the inner layers of the rope remain well lubricated, lubrication should be carried out at intervals not exceeding three (3) months during operation.
- All sheaves and guide rollers in contact with the moving wire rope should be given regular visual checks for surface wear and lubricated to make sure that they run freely. This operation should be carried out at appropriate intervals generally not exceeding three (3) months during operation. For all sheave axles, the factory recommends standard wheel bearing grease. For all sheaves and/or guide rollers, the factory recommends 90-WT gear oil or similar heavy lubricant applied by any method including pump/spray dispensing, brush, hand and/or swabbing.

Failure to read, understand and follow these instructions may cause death or serious injury. Read and understand these instructions before using lift.

IMPORTANT OPERATION / MAINTENANCE INSTRUCTIONS - PLEASE READ

TO RAISE LIFT

- ✓ Read Operating and Safety manuals before using lift.
- ✓ Always lift vehicle according to manufacturer's recommended lifting points.
- ✓ Position vehicle between columns. Adjust swing arms so that vehicle is positioned with the center of gravity midway between pads.
- ✓ Position lift contact pads at manufacturers recommended lifting points.
- ✓ Use lift adapters as needed. Never exceed 9" of pad/adaptor height.
- ✓ Raise lift by pressing RAISE BUTTON on power unit until contact pads make contact with the underside of the vehicle.
- ✓ Recheck to make sure vehicle is secure.
- ✓ Raise vehicle to desired working height then press power unit LOWERING HANDLE until lift carriages rest onto nearest safety lock position.
- ✓ Maintain visual contact with vehicle and surrounding area at all times while raising lift.
- ✓ **STOP IMMEDIATELY** if load shifts or becomes unlevel.
- ✓ Always ensure safety locks are engaged before any attempt is made to work on or near vehicle.
- ✓ Always ensure lift contact pads are making full contact with vehicle before any attempt is made to work on or near vehicle.

TO LOWER LIFT

- ✓ Raise lift by pressing RAISE BUTTON on power unit. Elevate lift at least two inches to allow adequate clearance for the locks to clear.
- ✓ Clear safety locks by maintaining pressure on SAFETY LOCK RELEASE HANDLE to its furthest travel.
- ✓ Be sure tool trays, stands or personnel are removed from under vehicle.
- ✓ Lower vehicle by pressing power unit lowering handle until lift has descended completely.
- ✓ Maintain visual contact with vehicle and surrounding area at all times while lowering lift.
- ✓ **STOP IMMEDIATELY** if load shifts or becomes unlevel.
- ✓ Before removing vehicle from lift area, position lift arms to provide unobstructed exit.
- ✓ **NEVER**, drive over lift arms.

REQUIRED MONTHLY MAINTENANCE

- ✓ **ALWAYS** consult operation manual for factory recommended maintenance.
- ✓ Check arm restraints for proper operation.
- ✓ Check all chain/cable connections, bolts and pins to insure proper mounting.
- ✓ Visually inspect safety locks for proper operation.
- ✓ Visually inspect concrete floor. **DO NOT USE LIFT** if concrete foundation shows signs of deterioration.
- ✓ Inspect all anchor bolts and retighten if necessary.
- ✓ Check columns for squareness and plumb.
- ✓ Inspect all pivot pins making sure they are properly secured.
- ✓ Check equalizer cable tension – cables must have equal tension - adjust if necessary.
- ✓ Inspect all lift pads, replace if necessary.
- ✓ If lift is equipped with overhead cut-off switch, check for proper operation.

WARNING!

1. **WARNING:** If cement anchor bolts are loose, or any component of the lift is found to be defective, **DO NOT USE LIFT!**
2. Never operate the lift with any person or equipment below.
3. Never exceed rated capacity.
4. Always insure safety locks are engaged before any attempt is made to work on or near vehicle.
5. Never leave lift in an elevated position unless the safety locks are engaged.
6. Do not permit electric motor to get wet! Motor damage caused by dampness is not covered under warranty.

CAUTION



NEVER LIFT ANY VEHICLE IN ANY MANNER WITH LESS THAN FOUR (4) ARMS. RATED CAPACITY OF EACH LIFT ARM IS NO GREATER THAN ONE FOURTH (1/4) OF THE OVERALL LIFTING CAPACITY.

PART SPECIFICATION FORM

BENDPAK Number:	5905660
MRP Description:	MAX CAP NRTL DANGER 12K
Date:	05/06/2013
ECO :	00593

1. Engineering Specification

Application:

LIFT CAPACITY STICKER FOR CE LIFTS

Detailed Description:



SIZE: 3.25" L x 4.5" W (82mm x 114mm)

2. Vendor Information

Approved Vendor	Vendor Part #	Contact #	Preferred Vendor
1)			

! ATTENTION !

MAXIMUM LIFTING CAPACITY

12000 Lbs.

5443 Kg.

PART SPECIFICATION FORM


BENDPAK Number:	5905940
MRP Description:	PRODUCT DATA LABEL
Date:	05/06/2013
ECO :	00593

1. Engineering Specification

Application:

PRODUCT DATA LABEL

Detailed Description:



SANTA PAULA, CA USA
 WWW.BENDPAK.COM

LIFT TYPE: SURFACE MOUNT CAP: MED/HVY DTY MFG. BPK SEE DATA PLATE FOR PRODUCT DETAILS
 POWER: ELECTRIC/HYDRAULIC INSTALLATION - SEE OWNERS GUIDE OR CONTACT FACTORY

SAFETY INSTRUCTIONS: IF ATTACHMENTS, ACCESSORIES OR CONFIGURATION MODIFYING COMPONENTS THAT ARE LOCATED IN THE LOAD PATH, AFFECT OPERATION OF THE LIFT, AFFECT THE LIFT ELECTRICAL LISTING OR AFFECT INTENDED VEHICLE ACCOMMODATION ARE USED ON THIS LIFT AND, IF THEY ARE NOT CERTIFIED FOR USE ON THIS LIFT, THEN THE CERTIFICATION OF THIS LIFT SHALL BECOME NULL AND VOID. CONTACT THE PARTICIPANT FOR INFORMATION PERTAINING TO CERTIFIED ATTACHMENTS, ACCESSORIES OR CONFIGURATION MODIFYING COMPONENTS.

BENDPAK LIFTS ARE SUPPLIED WITH CONCRETE FASTENERS MEETING THE CRITERIA AS PRESCRIBED BY ASTM E488 - 96(2003). LIFT BUYERS ARE RESPONSIBLE FOR ANY SPECIAL REGIONAL STRUCTURAL AND/OR SEISMIC ANCHORING REQUIREMENTS SPECIFIED BY ANY OTHER AGENCIES AND/OR CODES SUCH AS THE UNIFORM BUILDING CODE (UBC) AND/OR INTERNATIONAL BUILDING CODE (IBC).

THE MANUFACTURE, USE, SALE OR IMPORT OF THIS PRODUCT MAY BE SUBJECT TO ONE OR MORE UNITED STATES PATENTS, OR PENDING APPLICATIONS, OWNED BY BENDPAK, INC.
 DO NOT REMOVE ENGINEERED BY BENDPAK INC. USA MADE IN CHINA

SIZE: 2.3" L x 4.5" W (58mm x 114mm)

2. Vendor Information

Approved Vendor	Vendor Part #	Contact #	Preferred Vendor
1)			



SANTA PAULA, CA USA

WWW.BENDPAK.COM

PN 5905940

LIFT TYPE: SURFACE MOUNT CAP: MED/HVY DTY MFG. BPK SEE DATA PLATE FOR PRODUCT DETAILS

POWER: ELECTRIC/HYDRAULIC INSTALLATION - SEE OWNERS GUIDE OR CONTACT FACTORY

SAFETY INSTRUCTIONS: IF ATTACHMENTS, ACCESSORIES OR CONFIGURATION MODIFYING COMPONENTS THAT ARE LOCATED IN THE LOAD PATH, AFFECT OPERATION OF THE LIFT, AFFECT THE LIFT ELECTRICAL LISTING OR AFFECT INTENDED VEHICLE ACCOMMODATION ARE USED ON THIS LIFT AND, IF THEY ARE NOT CERTIFIED FOR USE ON THIS LIFT, THEN THE CERTIFICATION OF THIS LIFT SHALL BECOME NULL AND VOID. CONTACT THE PARTICIPANT FOR INFORMATION PERTAINING TO CERTIFIED ATTACHMENTS, ACCESSORIES OR CONFIGURATION MODIFYING COMPONENTS.

BENDPAK LIFTS ARE SUPPLIED WITH CONCRETE FASTENERS MEETING THE CRITERIA AS PRESCRIBED BY ASTM E488 - 96(2003). LIFT BUYERS ARE RESPONSIBLE FOR ANY SPECIAL REGIONAL STRUCTURAL AND/OR SEISMIC ANCHORING REQUIREMENTS SPECIFIED BY ANY OTHER AGENCIES AND/OR CODES SUCH AS THE UNIFORM BUILDING CODE (UBC) AND/OR INTERNATIONAL BUILDING CODE (IBC).

THE MANUFACTURE, USE, SALE OR IMPORT OF THIS PRODUCT MAY BE SUBJECT TO ONE OR MORE UNITED STATES PATENTS, OR PENDING APPLICATIONS, OWNED BY BENDPAK, INC.

DO NOT REMOVE

ENGINEERED BY BENDPAK INC. USA

MADE IN CHINA

PART SPECIFICATION FORM

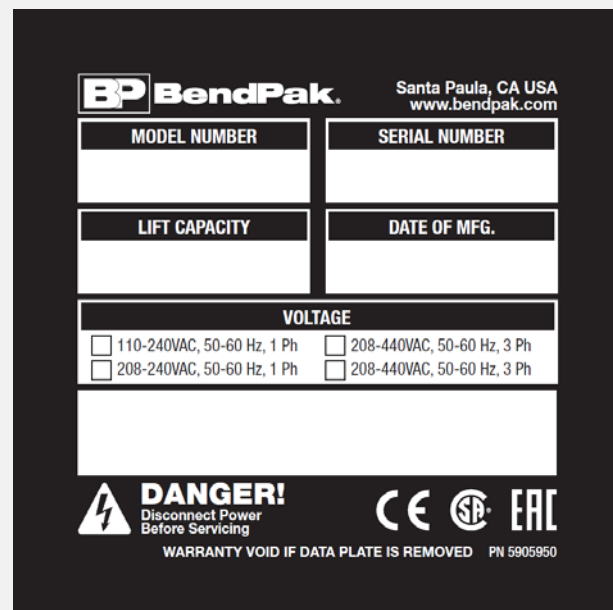
BENDPAK Number:	5905950
MRP Description:	2015_SERIAL_TAG-A-5905950
Date:	11/06/2015
ECO :	00738

1. Engineering Specification

Application:

DATA SERIAL TAG 2 POST CE

Detailed Description:



The image shows a template for a BendPak data plate. It includes the BendPak logo and company information (Santa Paula, CA USA, www.bendpak.com). The plate is divided into sections for MODEL NUMBER, SERIAL NUMBER, LIFT CAPACITY, and DATE OF MFG. There is a VOLTAGE section with checkboxes for 110-240VAC, 50-60 Hz, 1 Ph and 208-440VAC, 50-60 Hz, 3 Ph. At the bottom, there is a DANGER! warning to disconnect power before servicing, and a note that the warranty is void if the data plate is removed. The part number PN 5905950 is also listed.

SIZE: 3.48" L x 3.50" W
 (88.4mm x 88.9mm)

2. Vendor Information (Or for Reference)

Approved Vendor	Vendor Part #	Contact #	Preferred Vendor
1)			
2)			
OR BENDPAK ENGINEERING APPROVED EQUIVALENT			



Santa Paula, CA USA
www.bendpak.com

MODEL NUMBER

SERIAL NUMBER

LIFT CAPACITY

DESCRIPTION

VOLTAGE

☐ 110-240VAC, 50-60 Hz, 1 Ph

☐ 380-415VAC, 50-60 Hz, 3 Ph

☐ 208-240VAC, 50-60 Hz, 1 Ph

☐ 208-440VAC, 50-60 Hz, 3 Ph

DATE OF MFG.



DANGER!

Disconnect Power
Before Servicing



WARRANTY VOID IF DATA PLATE IS REMOVED PN 5905950



2016
2-Post Lifts
Colors & Graphics

XPR-9DS

XPR-10AS

XPR-9DTS

XPR-10AS-LP

XPR-9DS-LP

XPR-12FDL

XPR-10S

XPR-12CL

XPR-10S-LP

XPR-15CL

XPR-10TS

XPR-18CL

*** Does not include Models XPR-9, XPR-9TS & XPR-9-LP**

1/7/16

CONFIDENTIAL INFORMATION.

You may not disclose, print, copy or disseminate this information.
Unauthorized use is a violation of federal criminal law.

2-Post Lifts Product Decal Positioning



BPK Post Lift Decal.pdf

Material: Clear Adhesive PET

Size: 4.25"W x 38"H

Thickness: 4 Mil

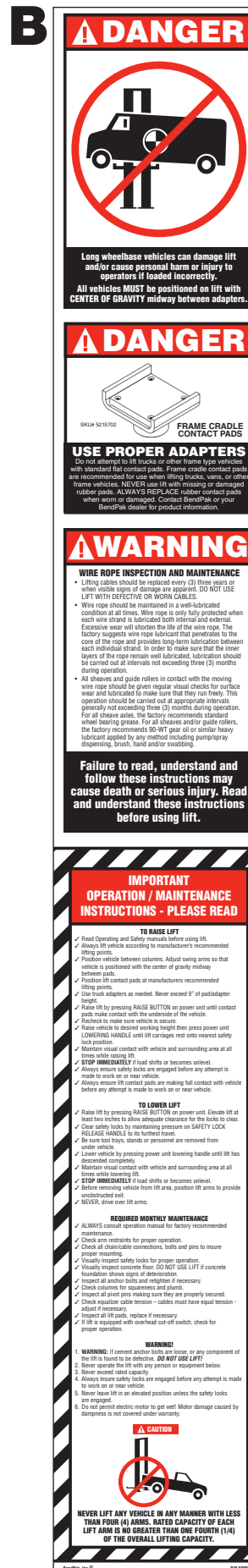
Finish: Polished

Ink: U.V. protected, Opaque White

Print Process: Silk Screen, 85 line-screen (Yellow color in file represents what should be clear PET material and SHOULD NOT print as Yellow ink. White area in file represents Opaque White ink.)

Lamination: Clear-gloss over-laminate for abrasion, chemical, and ultra violet protection

Total of 4



2-Post Safety Decal.pdf:

Size: 4"W x 28.75"H

Material: White Vinyl Pressure Sensitive Adhesive

Thickness: 4 Mil

Ink: U.V. protected CMYK 2/C Process

Finish: Polished

Print Process: Offset Lithography - 200 line-screen or 300 p.p.i. for digital

Lamination: Clear-gloss over-laminate for abrasion, chemical, and ultra violet protection

Place on BACK of Powerside Post

P/N 5905311

P/N 5905555

2-Post Lifts Product Decal Positioning

***C**

***Max. Cap. Danger.pdf:**
 Size: 4"W x 5"H
 Material: White Vinyl Pressure Sensitive Adhesive
 Thickness: 4 Mil
 Ink: U.V. protected CMYK 2/C Process
 Finish: Polished
 Print Process: Offset Lithography - 200 line-screen or 300 p.p.i. for digital
 Lamination: Clear-gloss over-laminate for abrasion, chemical, and ultra violet protection

P/N 5905401 - Max Cap. Danger 7k
 P/N 5905402 - Max Cap. Danger 9k
 P/N 5905403 - Max Cap. Danger 10k
 P/N 5905404 - Max Cap. Danger 12k
 P/N 5905405 - Max Cap. Danger 15k
 P/N 5905406 - Max Cap. Danger 18k

***D**

***Max. Cap. Attention.pdf:**
 Size: 4.5"W x 3.25"H
 Material: White Vinyl Pressure Sensitive Adhesive
 Thickness: 4 Mil
 Ink: U.V. protected CMYK 2/C Process
 Finish: Polished
 Print Process: Offset Lithography - 200 line-screen or 300 p.p.i. for digital
 Lamination: Clear-gloss over-laminate for abrasion, chemical, and ultra violet protection

P/N 5905645 - Max Cap. Attention 7k
 P/N 5905650 - Max Cap. Attention 9k
 P/N 5905655 - Max Cap. Attention 10k
 P/N 5905660 - Max Cap. Attention 12k
 P/N 5905670 - Max Cap. Attention 15k
 P/N 5905675 - Max Cap. Attention 18k

***DEPENDS ON LIFT MODEL AND CAPACITY**

E

Product Data Label_5905940-New.pdf:
 Size: 4.5"W x 2.3"H
 Material: White Vinyl Pressure Sensitive Adhesive
 Thickness: 4 Mil
 Ink: U.V. protected CMYK 2/C Process
 Finish: Polished
 Print Process: Offset Lithography - 200 line-screen or 300 p.p.i. for digital
 Lamination: Clear-gloss over-laminate for abrasion, chemical, and ultra violet protection

P/N 5905940

F

ALI Blue
 P/N 5905109
 (As a set E, F & G)

G

ALI Yellow

H

ALI Orange

2-Post Lifts Product Decal Positioning

PLEASE READ

Internal packing oil may cause the cylinders to bleed oil during start up. This is normal. To extend cylinder and seal life, raise the lift to full height at least once every day.

P/N 5905177

Place on **BOTH** Posts

LR-60_Warning_Instructions_Label.pdf:

Size: 3"W x 1.75"H

Material: White Vinyl Pressure Sensitive Adhesive

Thickness: 4 Mil

Ink: U.V. protected CMYK 2/C Process

Finish: Polished

Print Process: Offset Lithography - 200 line-screen or 300 p.i. for digital

Lamination: Clear-gloss over-laminate for abrasion, chemical, and ultra violet protection



ALI-Gold-Label-5905326.pdf

P/N 5905326

***FOR ALI APPROVED LIFTS ONLY**

K

BP BendPak Santa Paula, CA USA www.bendpak.com	
MODEL NUMBER	
SERIAL NUMBER	
LIFT CAPACITY	DESCRIPTION
VOLTAGE	
<input type="checkbox"/> 110-240VAC, 50-60 Hz, 1 Ph	<input type="checkbox"/> 380-415VAC, 50-60 Hz, 3 Ph
<input type="checkbox"/> 208-240VAC, 50-60 Hz, 1 Ph	<input type="checkbox"/> 208-440VAC, 50-60 Hz, 3 Ph
DATE OF MFG.	
DANGER! Disconnect Power Before Servicing WARRANTY VOID IF DATA PLATE IS REMOVED PN 5905950	
CE SP EAC	

2015_Serial_Tag-A-5905950.pdf:

Size: 3"W x 3"H

Material: 2 Mil. Gloss polyester thermal transfer label with a high performance permanent acrylic adhesive.

Ink: 1 Color-Black

***FOR CE APPROVED LIFTS ONLY**

P/N 5905950

L

BP BendPak Santa Paula, CA USA www.bendpak.com	
MODEL NUMBER	
SERIAL NUMBER	
LIFT CAPACITY	DESCRIPTION
VOLTAGE	
<input type="checkbox"/> 110-240VAC, 50-60 Hz, 1 Ph	<input type="checkbox"/> 380-415VAC, 50-60 Hz, 3 Ph
<input type="checkbox"/> 208-240VAC, 50-60 Hz, 1 Ph	<input type="checkbox"/> 208-440VAC, 50-60 Hz, 3 Ph
DATE OF MFG.	
DANGER! Disconnect Power Before Servicing WARRANTY VOID IF DATA PLATE IS REMOVED PN 5905951	
CE SP EAC	

2015_Serial_Tag-B-5905951.pdf:

Size: 3"W x 3"H

Material: 2 Mil. Gloss polyester thermal transfer label with a high performance permanent acrylic adhesive.

Ink: 1 Color-Black

***FOR NON-CE APPROVED LIFTS ONLY**

P/N 5905951

2-Post Lifts Product Decal Positioning

**Depends if
CE-APPROVED
or NON-CE**

**K or
L**

Place labels on
back side next
to power unit.

J

D

E

F

G

H

Powerside Post

A

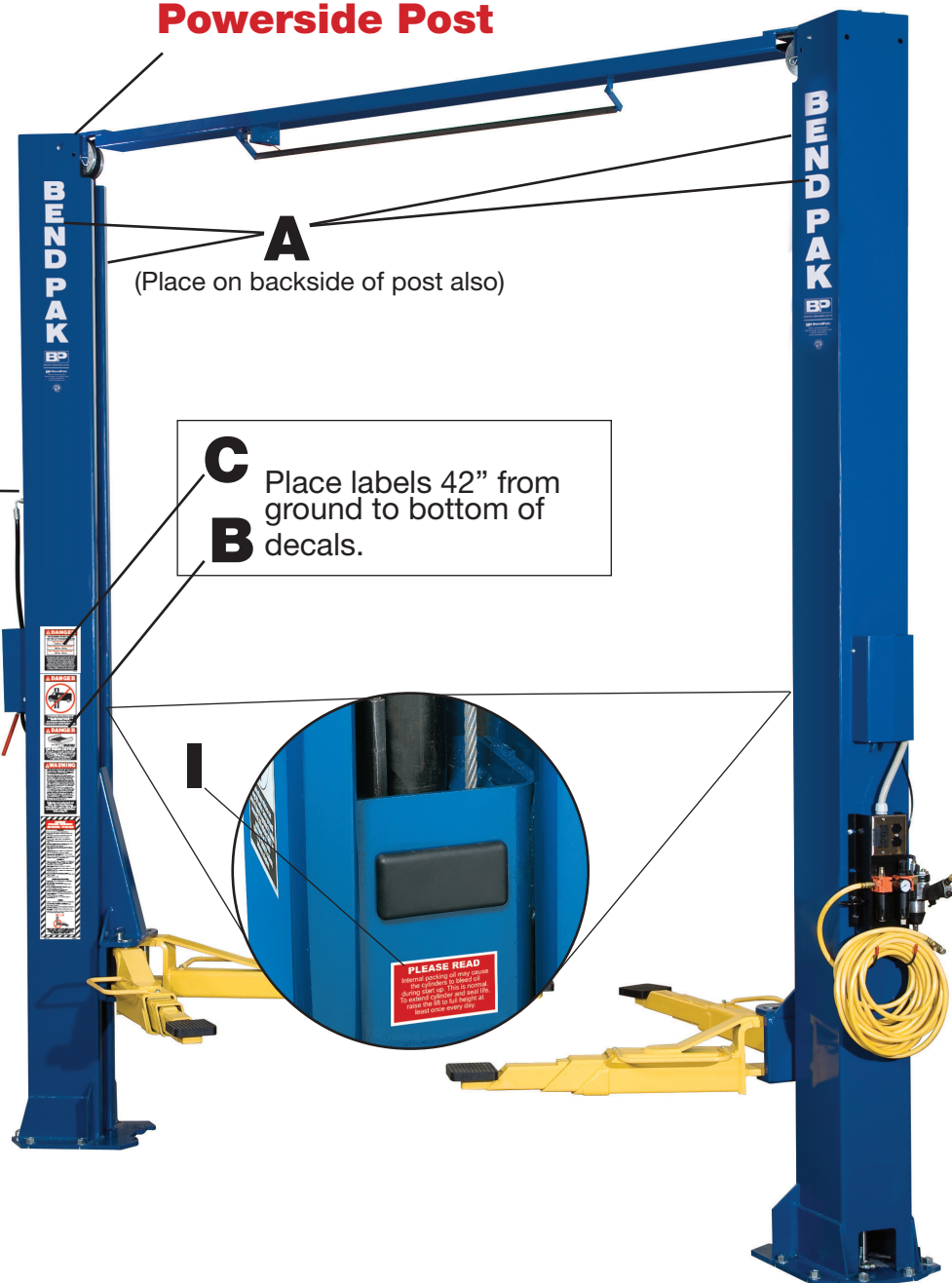
(Place on backside of post also)

C

Place labels 42" from
ground to bottom of
decals.

B

I



2 Post Lifts Packaging

BP BendPak. Santa Paula, CA USA www.bendpak.com	
MODEL NUMBER	SERIAL NUMBER
PN 5905285	

Serial_Tag_New-2015_Peel_Off-5905285.jpg:

Size: 3"W x 3"H

Material:Material: 2 Mil. Matte Silver Polyester
(Flex-PSE)

Print using thermal transfer printer with resin ribbon

Ink: 1 Color-Black

PEEL OFF INVENTORY LABEL	
MODEL NUMBER	SERIAL NUMBER
PN 5905285	
Do not remove back sheet of this portion to prevent from sticking completely as shown in image.	

