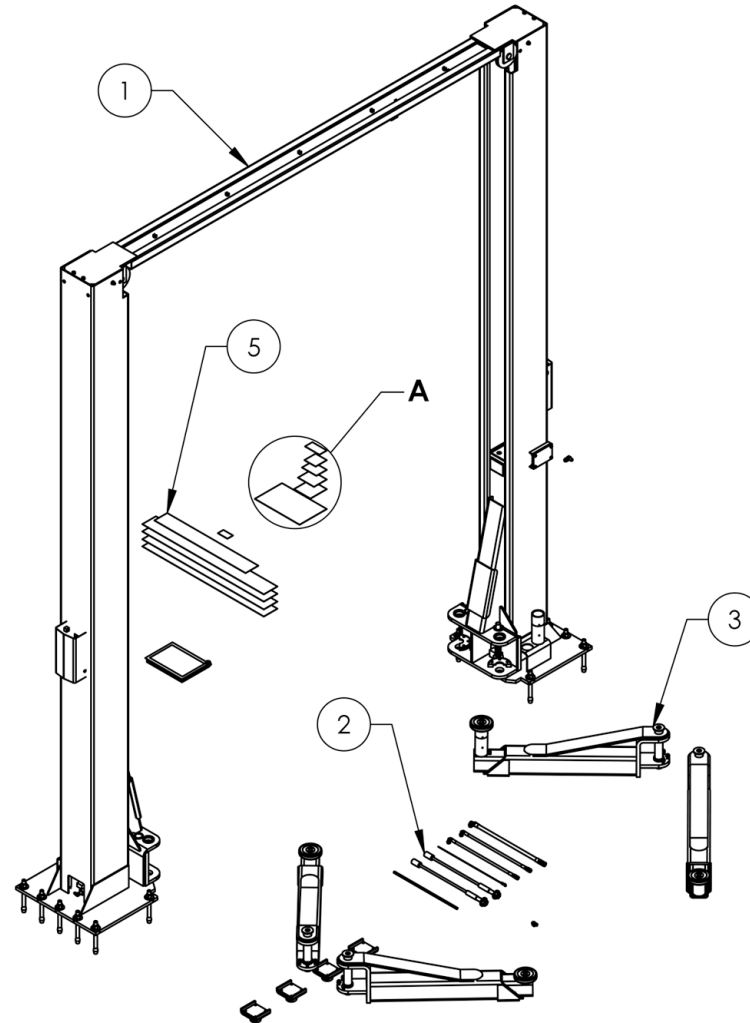


# Service Manual

## Service Parts & Diagrams

# XPR-15CL

**BendPak SKU 5260571**  
**XPR-15CL Two-Post Car Lift**  
**Version E**  
**04/14/2016**



This guide is a troubleshooting reference used for maintaining and servicing your BendPak product. It provides comprehensive information on identifying serviceable parts and components and assists in troubleshooting problems and performing assembly/disassembly procedures.



### **BendPak, Inc. Corporate Office**

1645 Lemonwood Drive  
Santa Paula, CA 93060 USA  
Toll Free US/Canada: 1-800-253-2363  
Fax: 1-805-933-9160  
info@bendpak.com

### **Customer Service Desk / Warranty**

Customer Service Representatives  
Office Tel: 1-805-933-9970  
Toll Free US/Canada: 1-800-253-2363  
Fax: 1-805-933-9160  
customerservice@bendpak.com

### **Parts Orders**

Customer Service Representatives  
Office Tel: 1-805-933-9970  
Toll Free US/Canada: 1-800-253-2363  
Fax: 1-805-933-9160  
parts@bendpak.com

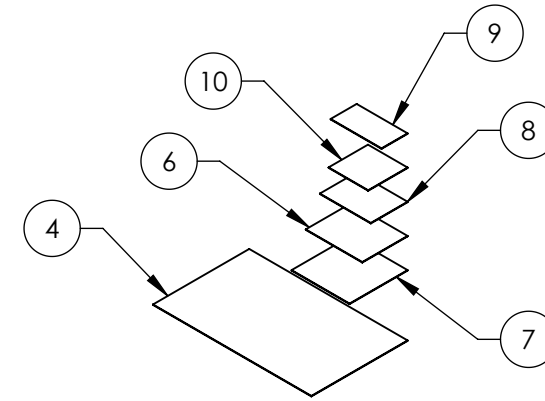
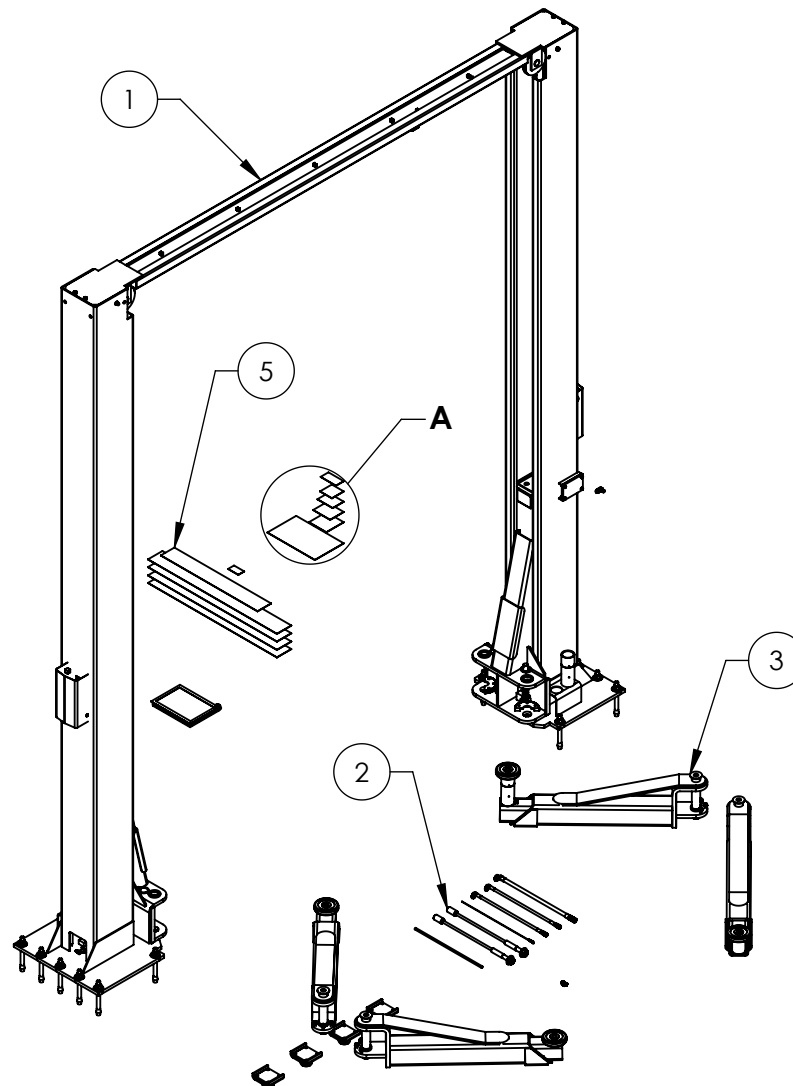
### **Domestic Sales & Service**

USA Sales Representatives  
Office Tel: 1-805-933-9970  
Toll Free US/Canada: 1-800-253-2363  
Fax: 1-805-933-9160  
sales@bendpak.com

### **International Sales & Service**

Office Tel: 1-805-933-9970  
Exports Department: 1-805-933-9970 Ext. 192  
Toll Free US/Canada: 1-800-253-2363  
Fax: 1-805-933-9160  
bpkexports@bendpak.com

		REVISION			
REV	DESCRIPTION	DATE	EDITED BY	ECO#	
A	PRODUCTION RELEASE, DERIVED FROM 5260444	12/16/2015	TM	00738	
B	UPDATED BOM REVISION	03/22/2016	TM	00750	



DETAIL A  
SCALE 1 : 12

ITEM NO	PART NUMBER	DESCRIPTION	QTY	REV
1	5245139	XPR-15/18C LIFT SUPERSTRUCTURE	1	W
2	5250043	XPR-15CL PARTS BOX	1	B
3	5215273	XPR-15CL/18CL ARM ASSEMBLY	4	D
4	5905109	WARNING ALI/WL 101	1	--
5	5905131	2 POST DECAL KIT, LESS ALI	1	C
6	5905405	MAX CAP DANGER 15K	1	--
7	5905465	MANUFACTURER LABEL	1	--
8	5905670	MAX CAP NRTL DANGER 15K	1	--
9	5905940	PRODUCT DATA LABEL	1	--
10	5905950	2015 SERIAL TAG-A-5905950	1	--

DO NOT SCALE DRAWING

NAME DATE

DRAWN TM 12/16/2015

CHECKED

DIMENSIONS ARE IN MM

THIRD ANGLE PROJECTION



PROPRIETARY AND CONFIDENTIAL  
THE INFORMATION CONTAINED IN THIS DRAWING IS  
THE SOLE PROPERTY OF BENDPAK INC. ANY  
REPRODUCTION IN PART OR AS A WHOLE WITHOUT  
THE WRITTEN PERMISSION OF BENDPAK INC. IS  
PROHIBITED.

TITLE:  
XPR-15CL PRODUCTION  
LIFT VER E

SIZE DWG. NO.

A 5260571

REV

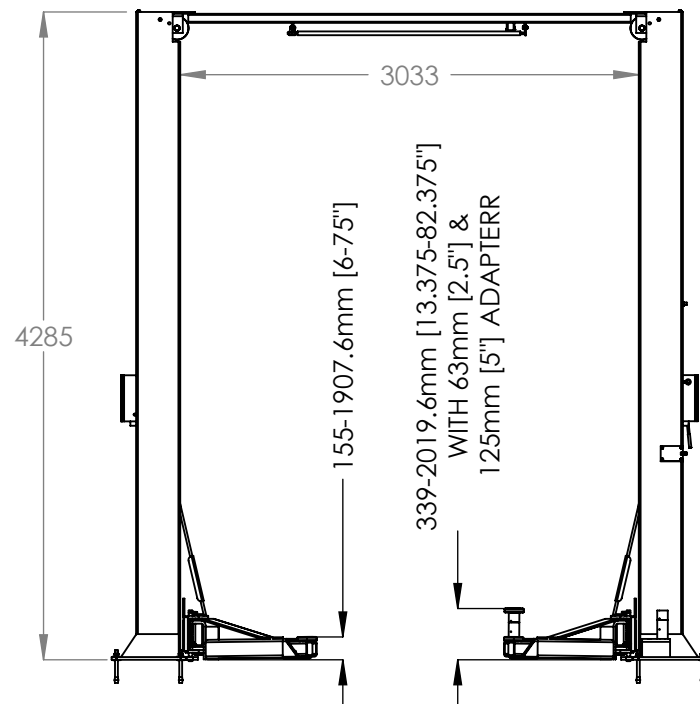
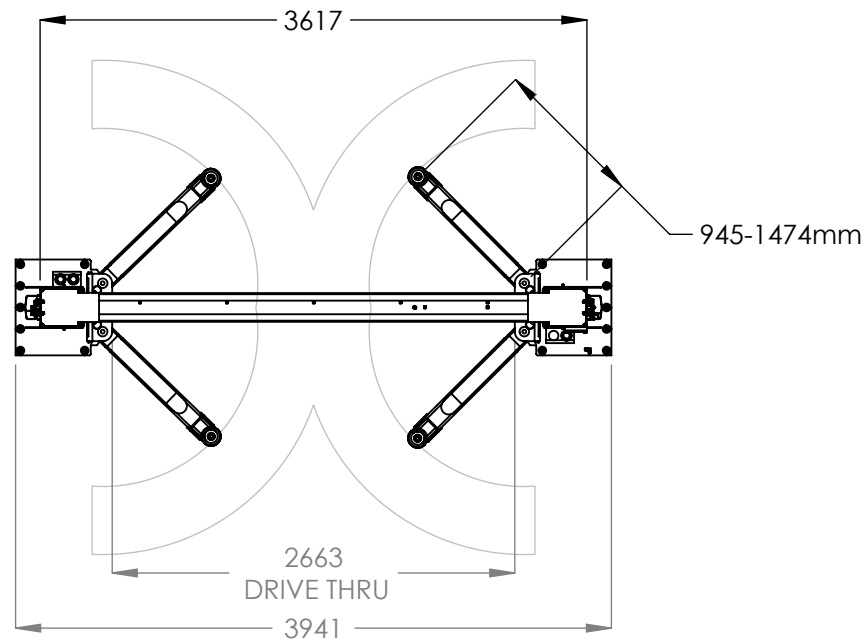
B

SCALE: 1:40

SHEET 1 OF 2

**NOTE: UNLESS OTHERWISE SPECIFIED.**

1. SEE SHIPPING INSTRUCTIONS FOR FINAL PACKAGING
2. ALL LABELS TO BE APPLIED TO POSTS AFTER PAINTING.  
SEE ATTACHED LABEL PLACEMENT SHEET.



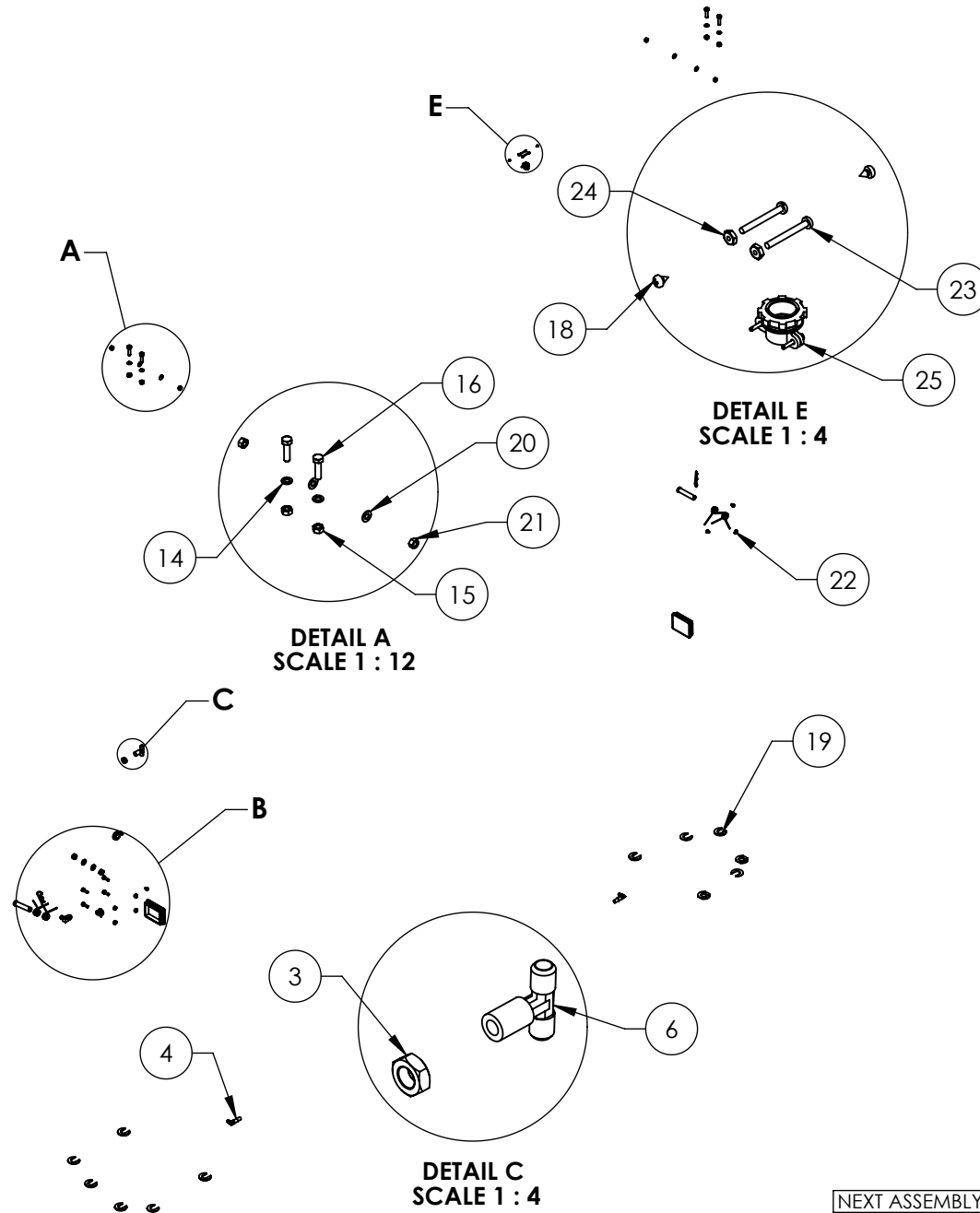
**BendPak** 1645 LEMONWOOD DR.  
SANTA PAULA, CA 93060

TITLE:  
XPR-15CL PRODUCTION  
LIFT VER E

SIZE	DWG. NO.	REV
A	5260571	B

SCALE: 1:50

SHEET 2 OF 2

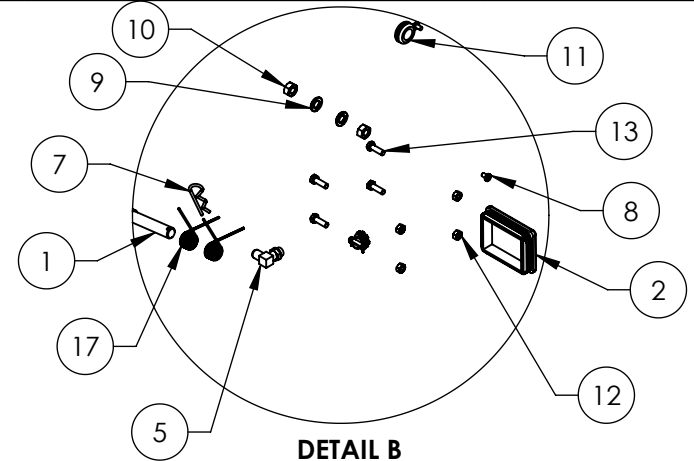


**NOTE: UNLESS OTHERWISE SPECIFIED.**

1. SEE SHIPPING INSTRUCTIONS FOR FINAL PACKAGING

NEXT ASSEMBLY
5250036
5250039
5250041
5250043
5250044
5250048

REVISION				
REV	DESCRIPTION	DATE	EDITED BY	ECO#
G	ADDED (2) 5540075, REPLACED 5530314 WITH 5530261, REPLACED 5540001 WITH 5540075, UPDATED TITLE TO REFLECT WHERE USED, UPDATED BOM REVISION AND NEXT ASSEMBLIES	06/17/2013	TM	00605
H	UPDATED BOM REVISION	06/02/2014	TM	00649
J	REPLACED 5505113 WITH 5505001, UPDATED NEXT ASSEMBLY	10/06/2014	TM	00663
J-001	UPDATED NEXT ASSEMBLY	11/18/2015	JM	00732
J-002	UPDATED NEXT ASSEMBLIES	12/15/2015	TM	00738



ITEM NO	PART NUMBER	DESCRIPTION	QTY	REV
1	5505001	GP-7/PI-6000/XPR SERIES SAFETY CLEVIS PIN	2	A
2	5715196	XPR PLASTIC COVER BLOCK 105 x 80	2	C
3	5535022	NUT 9/16-18 JN	1	-
4	5550113	FTG ELB -04 NPT L x -04 JIC	2	-
5	5550183	FTG ELB -06 JIC -06L ORB	1	-
6	5550003	FTG TEE -04 JIC -04 JIC -06 JIC	1	-
7	5505350	MODEL #211 HAIR PIN/LARGE	2	-
8	5530261	PHPS M6 x 1 x 10	4	-
9	5545347	WASHER M12 FLAT WASHER	2	-
10	5535354	NUT M12 x 1.75	2	-
11	5520001	RUBBER GROMMET 3/4 I.D.	1	-
12	5535001	NUT M8 x 1.25 NL	4	-
13	5530010	HHB M8 x 1.25 x 25	4	-
14	5545200	WASHER M10 x Ø18 SL	4	-
15	5535298	NUT M10 x 1.5	4	-
16	5530760	HEX HEAD BOLT M10 x 1.25 x 35	4	-
17	5540075	2.5 WIRE DIA. Ø20.5 x 75 LG	4	A
18	5530750	SIS M4.2 x 1.7 x 6	2	-
19	5545535	C WASHER SHIM FOR LIFTS	20	-
20	5545341	WASHER M10 x Ø20 FLAT	4	-
21	5535013	NUT M10 x 1.5 NL	4	-
22	5505031	ROTOR CLIP 12mm SS	1	-
23	5530115	BHS 6-32 x 1.25	2	-
24	5535190	HN 6-32	2	-
25	5520140	ROMEX CONNECTOR 3/8 #6623	2	-

DO NOT SCALE DRAWING

NAME DATE

DRAWN TM 02/11/2010

CHECKED CA 02/19/2016

DIMENSIONS ARE IN MM

THIRD ANGLE PROJECTION



PROPRIETARY AND CONFIDENTIAL  
THE INFORMATION CONTAINED IN THIS DRAWING IS  
THE SOLE PROPERTY OF BENDPAK INC. ANY  
REPRODUCTION IN PART OR AS A WHOLE WITHOUT  
THE WRITTEN PERMISSION OF BENDPAK INC. IS  
PROHIBITED.

**BendPak** 1645 LEMONWOOD DR.  
SANTA PAULA, CA 93060

TITLE: XPR CLEARFLOOR  
PARTS BAG

SIZE DWG. NO. REV

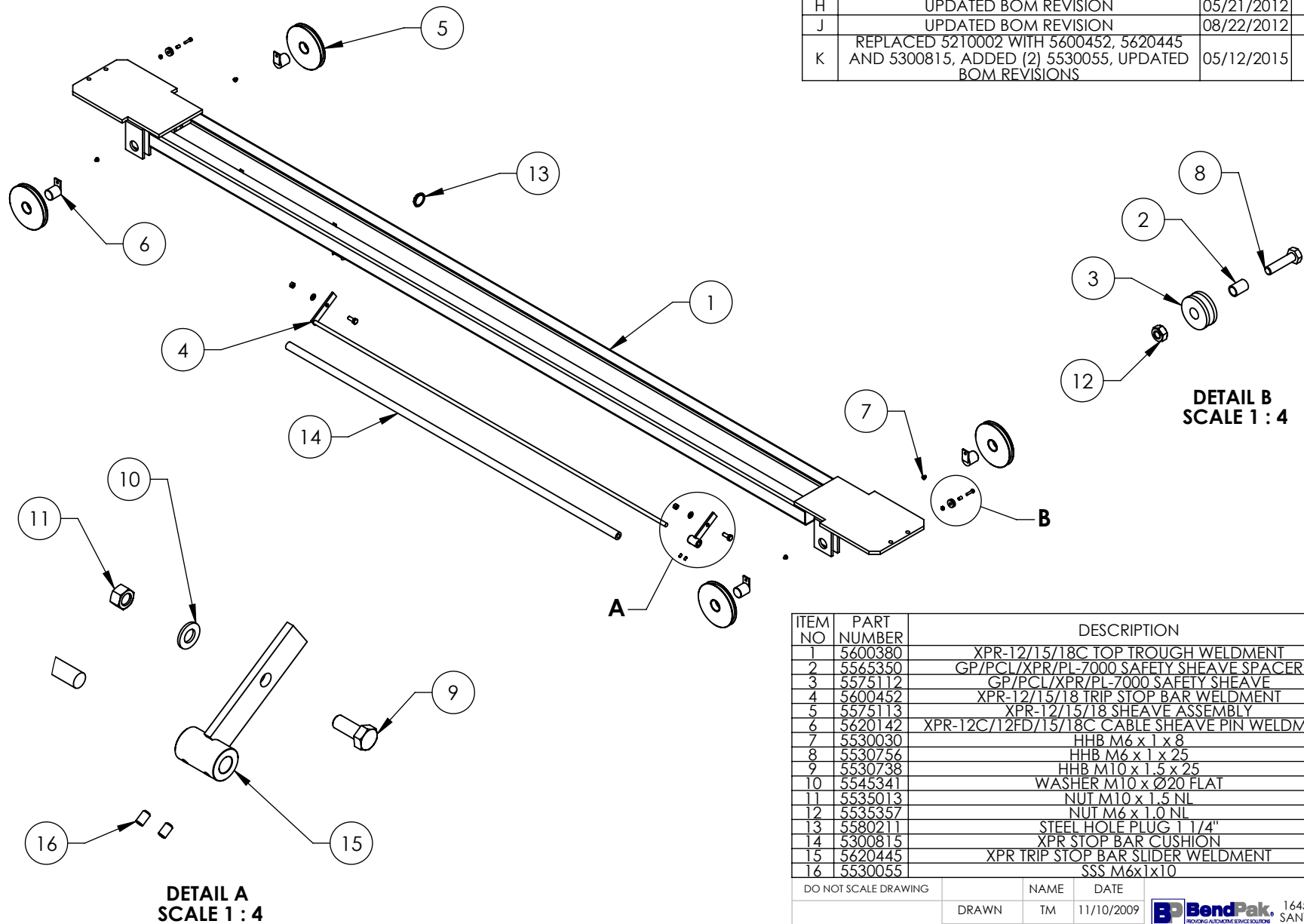
A 5174518 J

SCALE: 1:30

SHEET 1 OF 1



REVISION				
REV	DESCRIPTION	DATE	EDITED BY	ECO#
H	UPDATED BOM REVISION	05/21/2012	TM	00517
J	UPDATED BOM REVISION	08/22/2012	TM	00542
K	REPLACED 5210002 WITH 5600452, 5620445 AND 5300815, ADDED (2) 5530055, UPDATED BOM REVISIONS	05/12/2015	TM	00689



ITEM NO	PART NUMBER	DESCRIPTION	QTY	REV
1	5600380	XPR-12/15/18C TOP TROUGH WELDMENT	1	E
2	5565350	GP/PCL/XPR/PL-7000 SAFETY SHEAVE SPACER	2	C
3	5575112	GP/PCL/XPR/PL-7000 SAFETY SHEAVE	2	C
4	5600452	XPR-12/15/18 TRIP STOP BAR WELDMENT	1	A
5	5575113	XPR-12/15/18 SHEAVE ASSEMBLY	4	D
6	5620142	XPR-12C/12FD/15/18C CABLE SHEAVE PIN WELDMENT	4	A
7	5530030	HHB M6 x 1 x 8	4	--
8	5530756	HHB M6 x 1 x 25	2	--
9	5530738	HHB M10 x 1.5 x 25	2	--
10	5545341	WASHER M10 x Ø20 FLAT	2	--
11	5535013	NUT M10 x 1.5 NL	2	--
12	5535357	NUT M6 x 1.0 NL	2	--
13	5580211	STEEL HOLE PLUG 1 1/4"	1	--
14	5300815	XPR STOP BAR CUSHION	1	C
15	5620445	XPR TRIP STOP BAR SLIDER WELDMENT	1	C
16	5530055	SSS M6x1x10	2	--

DO NOT SCALE DRAWING

DIMENSIONS ARE IN MM



NAME DATE

DRAWN TM 11/10/2009

CHECKED CA 08/04/2015

THIRD ANGLE PROJECTION

PROPRIETARY AND CONFIDENTIAL

THE INFORMATION CONTAINED IN THIS DRAWING IS THE SOLE PROPERTY OF BENDPAK INC. ANY REPRODUCTION IN PART OR AS A WHOLE WITHOUT THE WRITTEN PERMISSION OF BENDPAK INC. IS PROHIBITED.

**BendPak** 1645 LEMONWOOD DR. SANTA PAULA, CA 93060

TITLE: XPR-12/15/18C TOP TROUGH ASSEMBLY

SIZE DWG. NO. REV

A 5210031 K

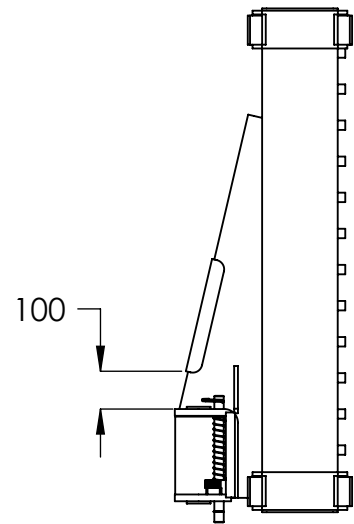
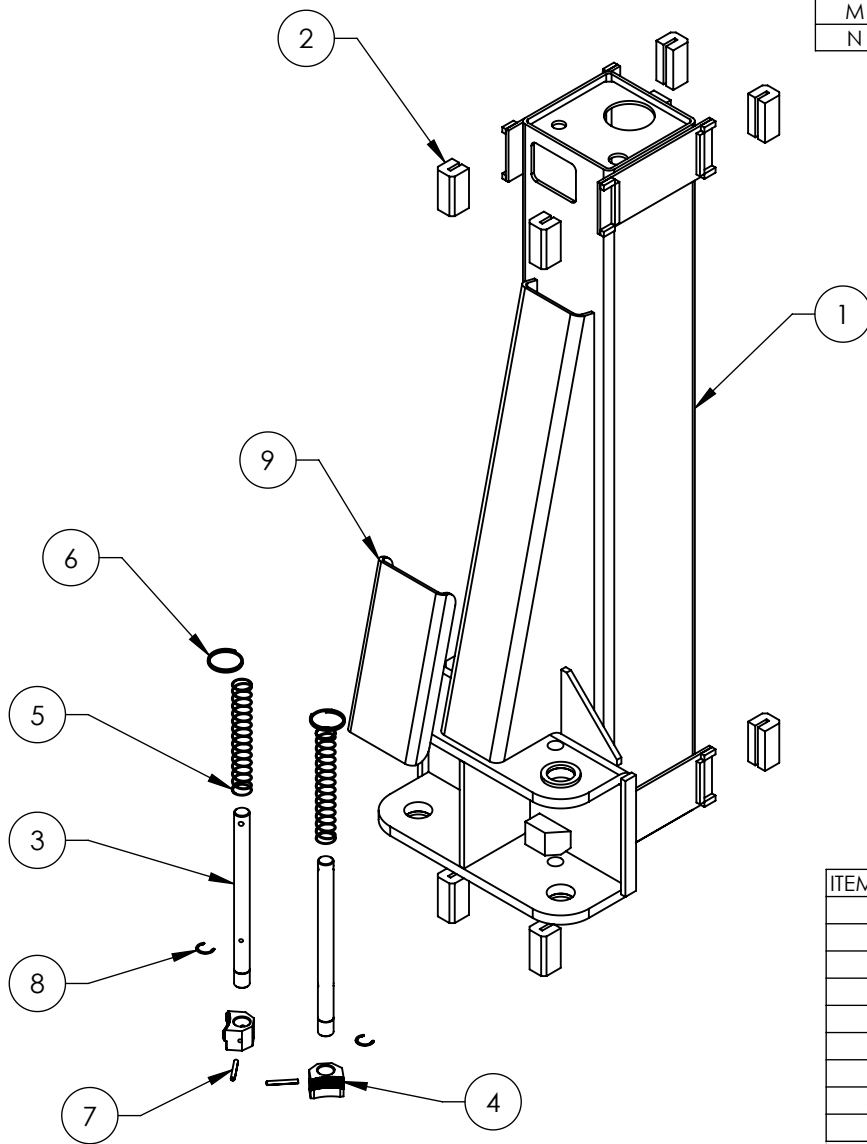
SCALE: 1:18 SHEET 1 OF 1

**NOTE: UNLESS OTHERWISE SPECIFIED.**



- SEE SHIPPING INSTRUCTIONS FOR FINAL PACKAGING
- ASSEMBLE ITEMS AS SHOWN

NEXT ASSEMBLY
5245138
5245139

REVISION				
REV	DESCRIPTION	DATE	EDITED BY	ECO#
L	UPDATED BOM REVISIONS	04/25/2014	TS	00649
M	UPDATED BOM REVISION	05/14/2015	TM	00689
N	UPDATED BOM REVISION	11/12/2015	TM	00738



ITEM NO	PART NUMBER	DESCRIPTION	QTY	REV
1	5600395	XPR-15/18C LIFT HEAD WELDMENT	1	K
2	5716001	PL-6000/7000, GP/XPR SERIES GUIDE BLOCK	8	E
3	5746099	XPR-12C/FD/15/18C Ø25mm LONG GEAR SHAFT	2	D
4	5701052	GP/RTL/XPR ARM INTERNAL GEAR STOP	2	E
5	5540130	XPR-12C/FD/15/18C LIFT HEAD SPRING	2	A
6	5580219	KEYRING 56mm x 3mm	2	-
7	5505106	SPRING PIN M6 x 50	2	-
8	5540006	SNAP RING TRUARC 5103-100	2	-
9	5930184	XPR-12/15/18 LIFT HEAD GUSSET COVER	1	C

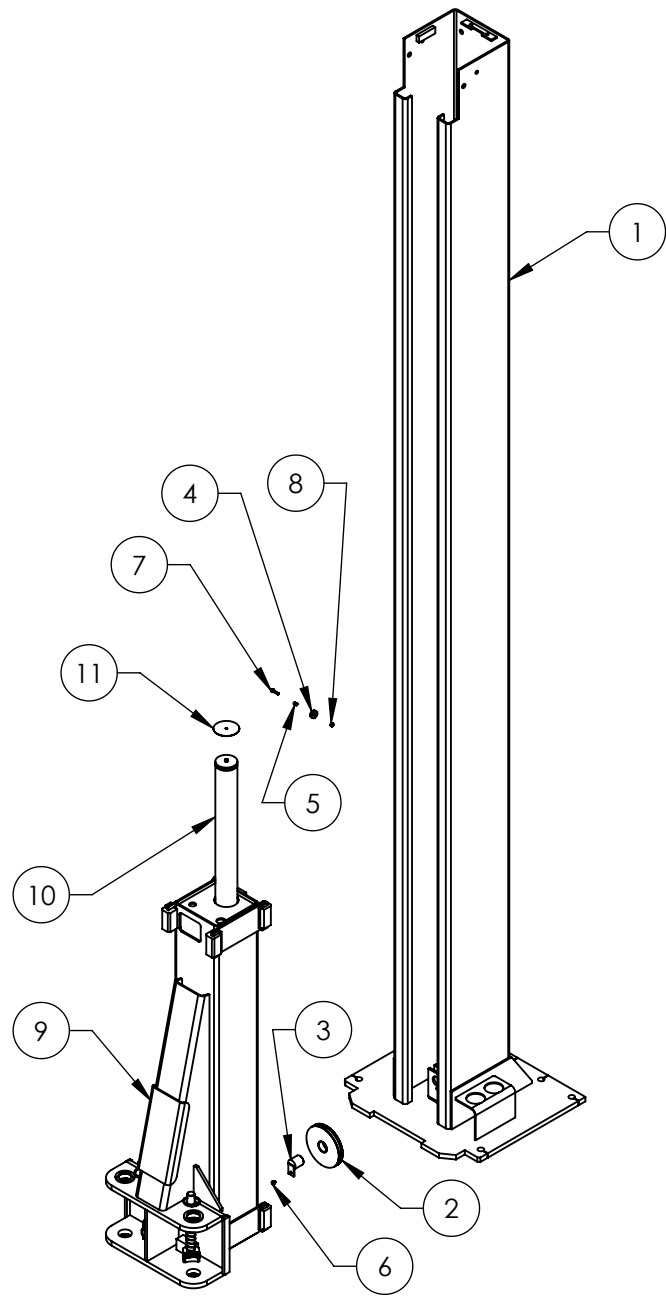
DO NOT SCALE DRAWING		NAME	DATE	 1645 LEMONWOOD DR. SANTA PAULA, CA 93060		
DRAWN		TM	11/30/2009			
CHECKED		CA	02/19/2016			
DIMENSIONS ARE IN MM		THIRD ANGLE PROJECTION			TITLE: XPR-15/18C LIFT HEAD ASSEMBLY	
		<p>PROPRIETARY AND CONFIDENTIAL</p> <p>THE INFORMATION CONTAINED IN THIS DRAWING IS THE SOLE PROPERTY OF <b>BENDPAK INC.</b> ANY REPRODUCTION IN PART OR AS A WHOLE WITHOUT THE WRITTEN PERMISSION OF <b>BENDPAK INC.</b> IS PROHIBITED.</p>			SIZE DWG. NO.	REV
					A 5215086	N
SCALE: 1:12					SHEET 1 OF 1	

**NOTE: UNLESS OTHERWISE SPECIFIED.**

- SEE SHIPPING INSTRUCTIONS FOR FINAL PACKAGING
- ASSEMBLE ITEMS AS SHOWN

NEXT ASSEMBLY
5215216
5215218

REVISION				
REV	DESCRIPTION	DATE	EDITED BY	ECO#
T	UPDATED BOM REVISION	12/01/2014	TM	00673
U	UPDATED BOM REVISION	05/14/2015	TM	00689
V	UPDATED BOM REVISIONS	11/12/2015	TM	00738



**NOTE: UNLESS OTHERWISE SPECIFIED.**

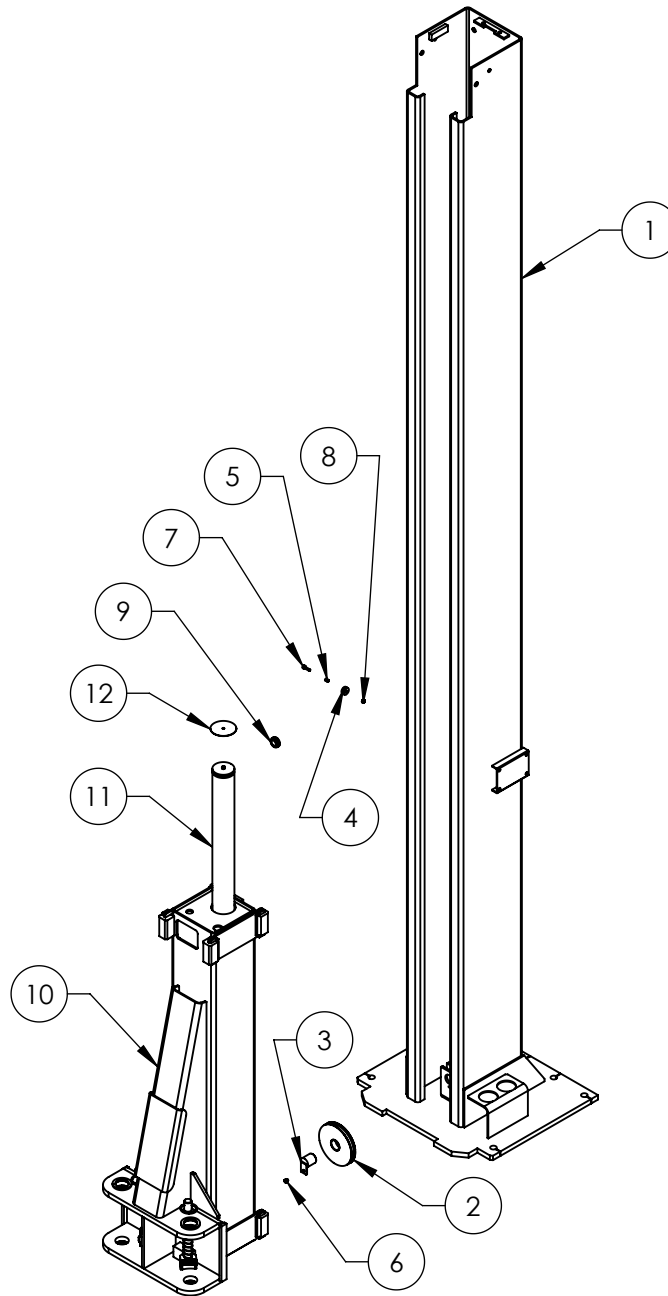
- SEE SHIPPING INSTRUCTIONS FOR FINAL PACKAGING
- ASSEMBLE ITEMS AS SHOWN

NEXT ASSEMBLY  
5245139

ITEM NO	PART NUMBER	DESCRIPTION	QTY	REV
1	5600404	XPR-12C/15/18C OFF SIDE POST WELDMENT	1	F
2	5575113	XPR-12/15/18 SHEAVE ASSEMBLY	1	D
3	5620142	XPR-12C/12FD/15/18C CABLE SHEAVE PIN WELDMENT	1	A
4	5575112	GP/PCL/XPR/PL-7000 SAFETY SHEAVE	1	C
5	5565350	GP/PCL/XPR/PL-7000 SAFETY SHEAVE SPACER	1	C
6	5530030	HHB M6 x 1 x 8	1	-
7	5530756	HHB M6 x 1 x 25	1	-
8	5535357	NUT M6 x 1.0 NL	1	-
9	5215086	XPR-15/18C LIFT HEAD ASSEMBLY	1	N
10	5502305	CYLINDER ASSEMBLY Ø2.5 x 69	1	E
11	5701717	XPR HEAVY DUTY CYLINDER STOPPER	1	A

DO NOT SCALE DRAWING		NAME	DATE	1645 LEMONWOOD DR. SANTA PAULA, CA 93060
DRAWN		TM	01/28/2010	
CHECKED		CA	02/19/2016	
DIMENSIONS ARE IN MM		THIRD ANGLE PROJECTION		
		TITLE: XPR-15/18C OFF SIDE POST ASSEMBLY		
		SIZE DWG. NO.	REV	
A 5215216		V		
SCALE: 1:25				SHEET 1 OF 1

PROPRIETARY AND CONFIDENTIAL  
THE INFORMATION CONTAINED IN THIS DRAWING IS  
THE SOLE PROPERTY OF BENDPAK INC. ANY  
REPRODUCTION IN PART OR AS A WHOLE WITHOUT  
THE WRITTEN PERMISSION OF BENDPAK INC. IS  
PROHIBITED.





**NOTE: UNLESS OTHERWISE SPECIFIED.**

1. SEE SHIPPING INSTRUCTIONS FOR FINAL PACKAGING
2. ASSEMBLE ITEMS AS SHOWN

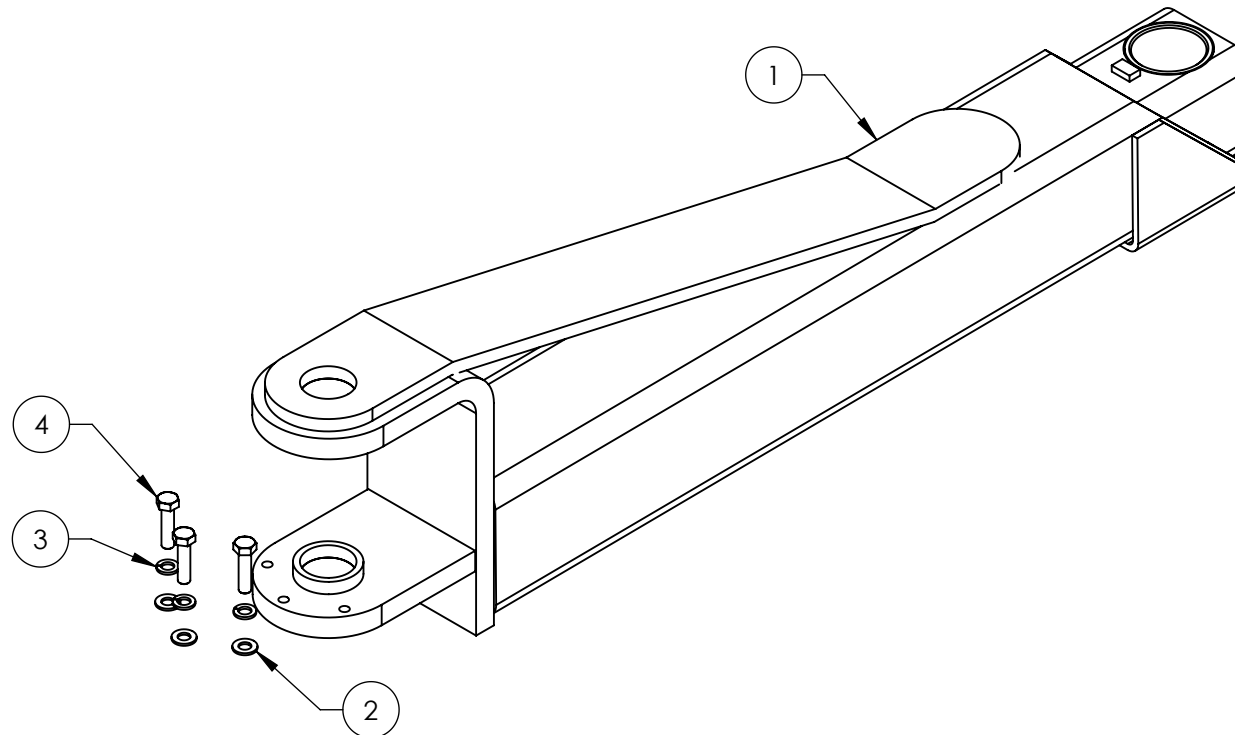
NEXT ASSEMBLY  
5245139

REVISION				
REV	DESCRIPTION	DATE	EDITED BY	ECO#
T	UPDATED BOM REVISION	12/01/2014	TM	00673
U	UPDATED BOM REVISION	05/14/2015	TM	00689
V	UPDATED BOM REVISIONS	11/12/2015	TM	00738



ITEM NO	PART NUMBER	DESCRIPTION	QTY	REV
1	5600399	XPR-12C/15/18C POWER SIDE POST WELDMENT	1	G
2	5575113	XPR-12/15/18 SHEAVE ASSEMBLY	1	D
3	5620142	XPR-12C/12FD/15/18C CABLE SHEAVE PIN WELDMENT	1	A
4	5575112	GP/PCL/XPR/PL-7000 SAFETY SHEAVE	1	C
5	5565350	GP/PCL/XPR/PL-7000 SAFETY SHEAVE SPACER	1	C
6	5530030	HHB M6 x 1 x 8	1	B
7	5530756	HHB M6 x 1 x 25	1	-
8	5535357	NUT M6 x 1.0 NL	1	-
9	5520001	RUBBER GROMMET, 3/4 I.D.	1	-
10	5215086	XPR-15/18C LIFT HEAD ASSEMBLY	1	N
11	5502305	CYLINDER ASSEMBLY Ø2.5 x 69	1	E
12	5701717	XPR HEAVY DUTY CYLINDER STOPPER	1	A

DO NOT SCALE DRAWING		NAME	DATE	 <b>BendPak.</b> 1645 LEMONWOOD DR. SANTA PAULA, CA 93060	
DRAWN		TM	01/28/2010		
CHECKED		CA	02/19/2016		
DIMENSIONS ARE IN MM		THIRD ANGLE PROJECTION		TITLE: XPR-15/18C POWER SIDE POST ASSEMBLY	
		<small>PROPRIETARY AND CONFIDENTIAL</small> <small>THE INFORMATION CONTAINED IN THIS DRAWING IS THE SOLE PROPERTY OF BENDPAK INC. ANY REPRODUCTION IN PART OR AS A WHOLE WITHOUT THE WRITTEN PERMISSION OF BENDPAK INC. IS PROHIBITED.</small>		SIZE DWG. NO.	REV
				<b>A</b> 5215218	V
				SCALE: 1:25	SHEET 1 OF 1

REVISION				
REV	DESCRIPTION	DATE	EDITED BY	ECO#
B	UPDATED BOM REVISION	09/22/2015	JM	00729
C	UPDATED TITLE TO REFLECT WHERE USED UPDATED NEXT ASSEMBLIES	12/17/2015	JM	00738
D	UPDATED BOM REVISION	03/21/2016	TM	00750



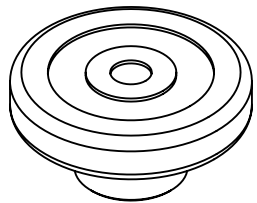
ITEM NO	PART NUMBER	DESCRIPTION	QTY	REV
1	5600986	XPR-15/18CL ARM WELDMENT	1	C
2	5545341	WASHER M10 x Ø20 FLAT	3	-
3	5545200	WASHER M10 x Ø18 SL	3	-
4	5530302	HHB M10 x 1.5 x 40	3	-

DO NOT SCALE DRAWING		NAME	DATE
DIMENSIONS ARE IN MM  		DRAWN	JM 06/24/2015
		CHECKED	
		THIRD ANGLE PROJECTION	
PROPRIETARY AND CONFIDENTIAL THE INFORMATION CONTAINED IN THIS DRAWING IS THE SOLE PROPERTY OF BENDPAK INC. ANY REPRODUCTION IN PART OR AS A WHOLE WITHOUT THE WRITTEN PERMISSION OF BENDPAK INC. IS PROHIBITED.			
		TITLE: XPR-15CL/18CL ARM ASSEMBLY	
		SIZE DWG. NO. A 5215273	REV D
SCALE: 1:6		SHEET 1 OF 1	

**NOTE: UNLESS OTHERWISE SPECIFIED.**

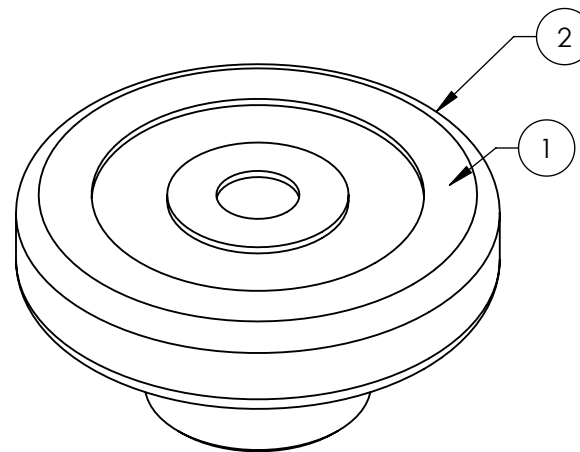
1. SEE SHIPPING INSTRUCTIONS FOR FINAL PACKAGING
2. ASSEMBLE ITEMS AS SHOWN

NEXT ASSEMBLY
5260564
5260571
5260576
5260577



ISOMETRIC VIEW  
FOR REFERENCE ONLY  
DO NOT SCALE

REVISION				
REV	DESCRIPTION	DATE	EDITED BY	ECO#
A	PRODUCTION RELEASE, DERIVED FROM 5215507	06/26/2015	JM	00708
A-001	UPDATED NEXT ASSEMBLIES	12/02/2015	TM	00738



**NOTE: UNLESS OTHERWISE SPECIFIED.**

1. SEE SHIPPING INSTRUCTIONS FOR FINAL PACKAGING
2. ASSEMBLE ITEMS AS SHOWN

ITEM NO	PART NUMBER	DESCRIPTION	QTY	REV
1	5600999	ROUND LIFT PAD WELDMENT	1	A
2	5715017	ROUND LIFT PAD ADAPTER RUBBER PAD	1	D

DO NOT SCALE DRAWING

NAME DATE

DRAWN JM 06/26/15  
CHECKED CA 02/17/2016

**BendPak.** 1645 LEMONWOOD DR.  
WORKING AUTOMAKE SERVICE SOURCE SANTA PAULA, CA 93060

DIMENSIONS ARE IN MM

THIRD ANGLE PROJECTION



PROPRIETARY AND CONFIDENTIAL  
THE INFORMATION CONTAINED IN THIS DRAWING IS  
THE SOLE PROPERTY OF BENDPAK INC. ANY  
REPRODUCTION IN PART OR AS A WHOLE WITHOUT  
THE WRITTEN PERMISSION OF BENDPAK INC. IS  
PROHIBITED.

TITLE: ROUND LIFT PAD  
ADAPTER ASSEMBLY

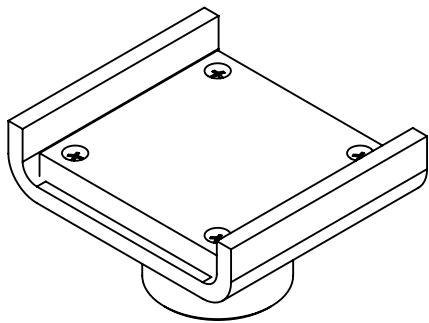
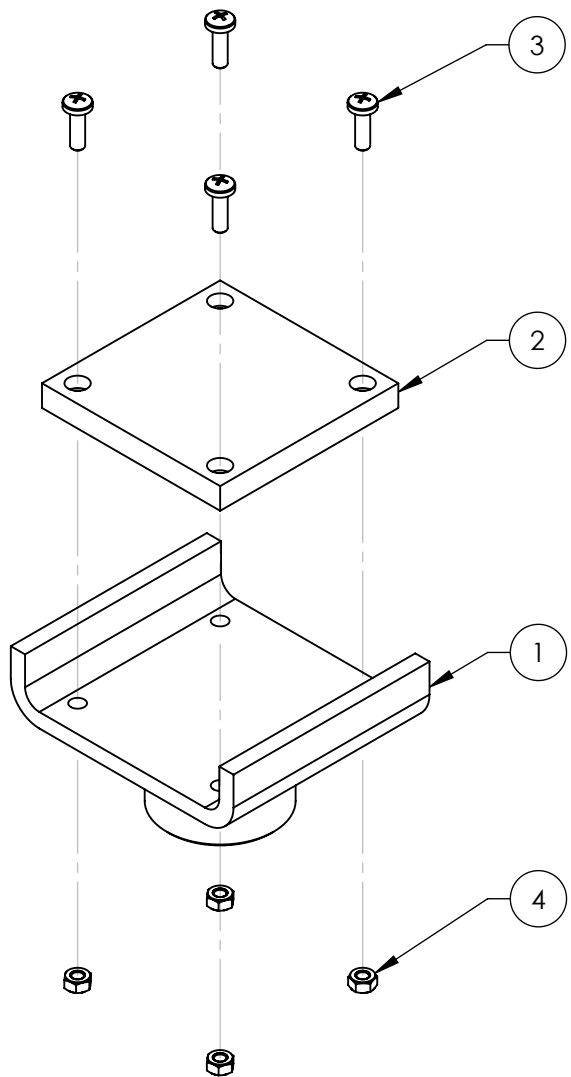
SIZE DWG. NO. REV  
A 5215701 A

SCALE: 1:2

SHEET 1 OF 1

NEXT ASSEMBLY
5250038
5250045
5250046
5250047
5250080
5250113
5250041
5250042
5250043
5250044

REVISION				
REV	DESCRIPTION	DATE	EDITED BY	ECO#
A	PRODUCTION RELEASE, DERIVED FROM 5215506	06/24/15	JM	00708
B	UPDATED TITLE TO REFLECT MARKETING, UPDATED BOM REVISION AND NEXT ASSEMBLIES	12/03/2015	TM	00738



ISOMETRIC VIEW  
FOR REFERENCE ONLY  
DO NOT SCALE

ITEM NO	PART NUMBER	DESCRIPTION	QTY	REV
1	5601000	CRADLE LIFT PAD WELDMENT	1	A
2	5715020	CRADLE LIFT PAD LARGE RUBBER PAD	1	B
3	5530022	BPHS M6 x 1 x 20 ZPL	4	--
4	5535357	NUT M6 x 1.0 NL	4	--

DO NOT SCALE DRAWING

NAME	DATE
DRAWN JM	06/24/2015
CHECKED CA	02/17/2016

**BendPak** 1645 LEMONWOOD DR.  
SANTA PAULA, CA 93060

THIRD ANGLE PROJECTION



PROPRIETARY AND CONFIDENTIAL  
THE INFORMATION CONTAINED IN THIS DRAWING IS  
THE SOLE PROPERTY OF BENDPAK INC. ANY  
REPRODUCTION IN PART OR AS A WHOLE WITHOUT  
THE WRITTEN PERMISSION OF BENDPAK INC. IS  
PROHIBITED.

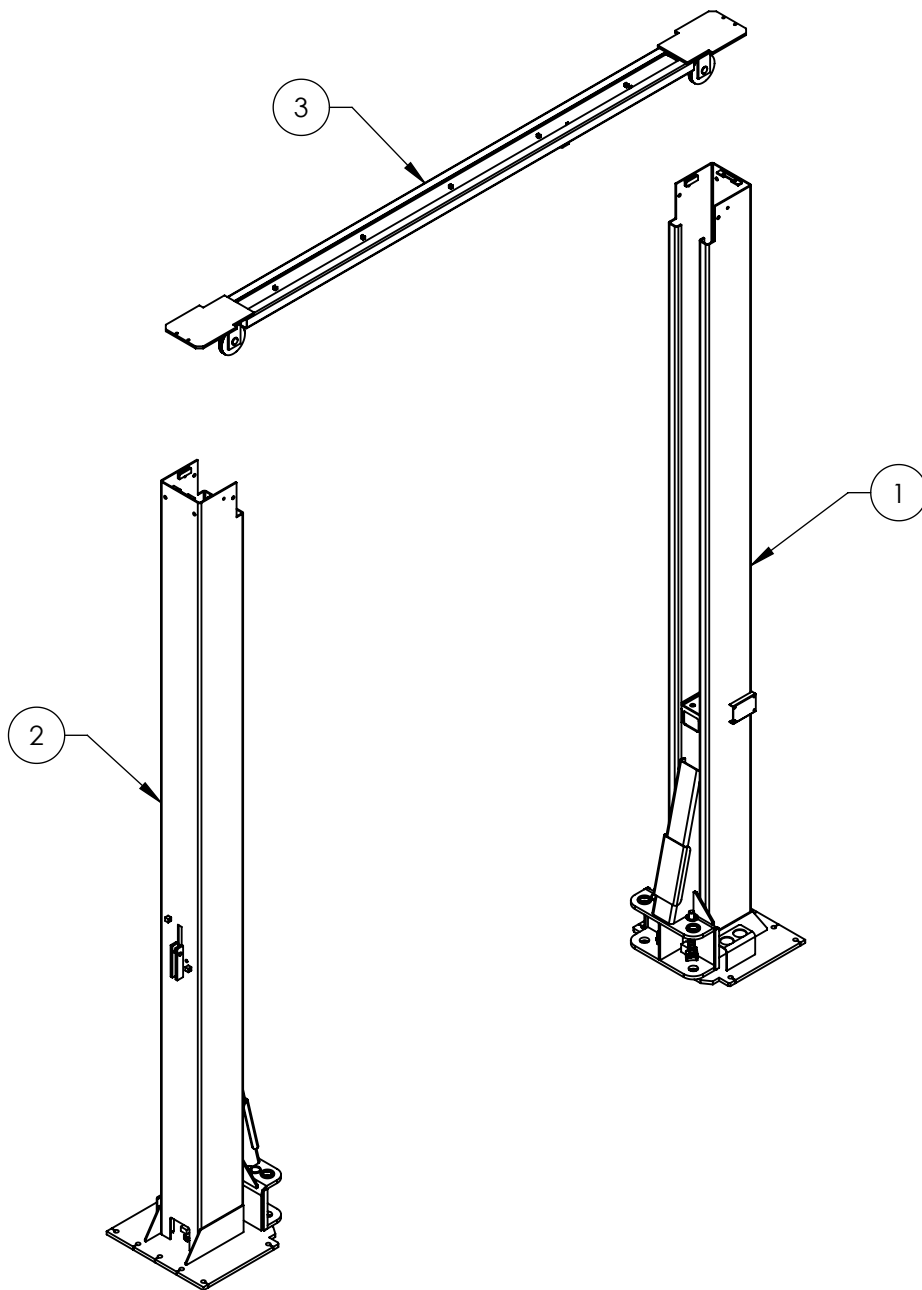
TITLE: CRADLE LIFT PAD  
LARGE ADAPTER  
ASSEMBLY

SIZE DWG. NO. REV  
**A** 5215702 B

SCALE: 1:2 SHEET 1 OF 1

NEXT ASSEMBLY
5250041
5250042
5250043
5250044
5250045
5250046
5250047

**NOTE: UNLESS OTHERWISE SPECIFIED.**  
1. SEE SHIPPING INSTRUCTIONS FOR FINAL PACKAGING  
2. ASSEMBLE ITEMS AS SHOWN






REVISION				
REV	DESCRIPTION	DATE	EDITED BY	ECO#
U	UPDATED BOM REVISIONS	12/01/2014	TM	00673
V	UPDATED BOM REVISIONS	05/14/2015	TM	00689
W	UPDATED BOM REVISIONS AND NEXT ASSEMBLIES	12/08/2015	TM	00738

**NOTE: UNLESS OTHERWISE SPECIFIED.**

1. SEE SHIPPING INSTRUCTIONS FOR FINAL PACKAGING

NEXT ASSEMBLY
5260564
5260571
5260576
5260577

ITEM NO	PART NUMBER	DESCRIPTION	QTY	REV
1	5215218	XPR-15/18C POWER SIDE POST ASSEMBLY	1	V
2	5215216	XPR-15/18C OFF SIDE POST ASSEMBLY	1	V
3	5210031	XPR-12/15/18C TOP TROUGH ASSEMBLY	1	K

DO NOT SCALE DRAWING		NAME	DATE	<div>1645 LEMONWOOD DR. SANTA PAULA, CA 93060</div>			
DIMENSIONS ARE IN MM		DRAWN	TM			02/03/2010	
		CHECKED	CA			02/23/2016	
<div></div>		THIRD ANGLE PROJECTION			TITLE: XPR-15/18C LIFT SUPERSTRUCTURE		
		<div></div>			SIZE DWG. NO.		REV
		<div>PROPRIETARY AND CONFIDENTIAL THE INFORMATION CONTAINED IN THIS DRAWING IS THE SOLE PROPERTY OF <b>BENDPAK INC.</b> ANY REPRODUCTION IN PART OR AS A WHOLE WITHOUT THE WRITTEN PERMISSION OF <b>BENDPAK INC.</b> IS PROHIBITED.</div>			A	5245139	W
						SCALE: 1:35	



REVISION				
REV	DESCRIPTION	DATE	EDITED BY	ECO#
A	PRODUCTION RELEASE, DERIVED FROM 5250199	12/16/2015	TM	00738
B	UPDATED BOM REVISIONS	03/23/2016	TM	00750

ITEM NO	PART NUMBER	DESCRIPTION	QTY	REV
1	5174518	XPR CLEARFLOOR PARTS BAG	1	J
2	5736606	XPR-15/18 BOLT ON ARM RESTRAINT GEAR	4	F
3	5746192	ARM ADAPTER, MEDIUM	4	D
4	5746193	ARM ADAPTER, LONG	4	C
5	5210009	XPR-9D/10/12/12FD/15/18C OFF SIDE SAFETY COVER	1	E
6	5600163	XPR CLEARFLOOR POWER SIDE SAFETY COVER	1	E
7	5215701	ROUND LIFT PAD ADAPTER ASSEMBLY	4	A
8	5715003	POWER UNIT VIBRATION DAMPENER	1	B
9	5210010	XPR OFF SIDE SAFETY WELDMENT	1	E
10	5210007	XPR POWER SIDE SAFETY ASSEMBLY	1	F
11	5600349	XPR-15/18C LIFT HEAD PIN WELDMENT	4	C
12	5570150	XPR-12C/15/18C HYDRAULIC HOSE ASSY Ø6.35 x 9611mm SB	1	D
13	5570017	XPR HYDRAULIC HOSE ASSY Ø10 x 1219mm SB	1	C
14	5570832	XPR CLEARFLOOR HYDRAULIC HOSE ASSY Ø6.35 x 2299mm SB	1	E
15	5595125	XPR-12C/15/18C Ø2.4mm x 8900 SAFETY CABLE	1	B
16	5595922	XPR-12C/15/18C/ XPR-12C-LWB CABLE ASSY Ø12 x 10640mm ST	2	A
17	5535011	NUT M22 x 2.5 NL	2	-
18	5545345	WASHER M22 x 50mm FLAT	2	-
19	5540112	SNAP RING; TRUARC 5103-175	4	-
20	5746166	DOUBLE THREADED ROD M10 x 1.5 x 295	2	B
21	5716634	XPR MICROSWITCH COVER, PLASTIC	1	A
22	5530308	AB 3/4" x 7"	14	-
23	5550112	FTG NPL -04 NPT x -04 F NPT	2	-
24	5520116	14-4 SJO UL 62 CABLE 300vac	4275mm*	-
25	5525150	SPDT MICRO SWITCH;25A@125VAC	1	-
26	5525112	MICRO SWITCH COVER-5PA2	1	-
27	5215702	CRADLE LIFT PAD LARGE ADAPTER ASSEMBLY	4	B
28	5900370	XPR-12CL-18CL INSTALLATION MANUAL	1	-
29	5905151	SAFETY TIPS CARD ALL-ST 90	1	-
30	5900147	SAFETY MANUAL ALI / SM 93-1	1	-
31	5900152	ALIGN OIM OPERATION INSPECTION & MAINTENANCE	1	-
32	5900280	ALI/LP FRAME ENGAGING LIFTS GUIDE	1	-

DO NOT SCALE DRAWING

NAME DATE

DRAWN TM 12/16/2015

CHECKED

DIMENSIONS ARE IN MM

THIRD ANGLE PROJECTION



PROPRIETARY AND CONFIDENTIAL  
THE INFORMATION CONTAINED IN THIS DRAWING IS THE SOLE PROPERTY OF BENDPAK INC. ANY REPRODUCTION IN PART OR AS A WHOLE WITHOUT THE WRITTEN PERMISSION OF BENDPAK INC. IS PROHIBITED.

**BendPak** 1645 LEMONWOOD DR.  
SANTA PAULA, CA 93060

TITLE: XPR-15CL PARTS BOX

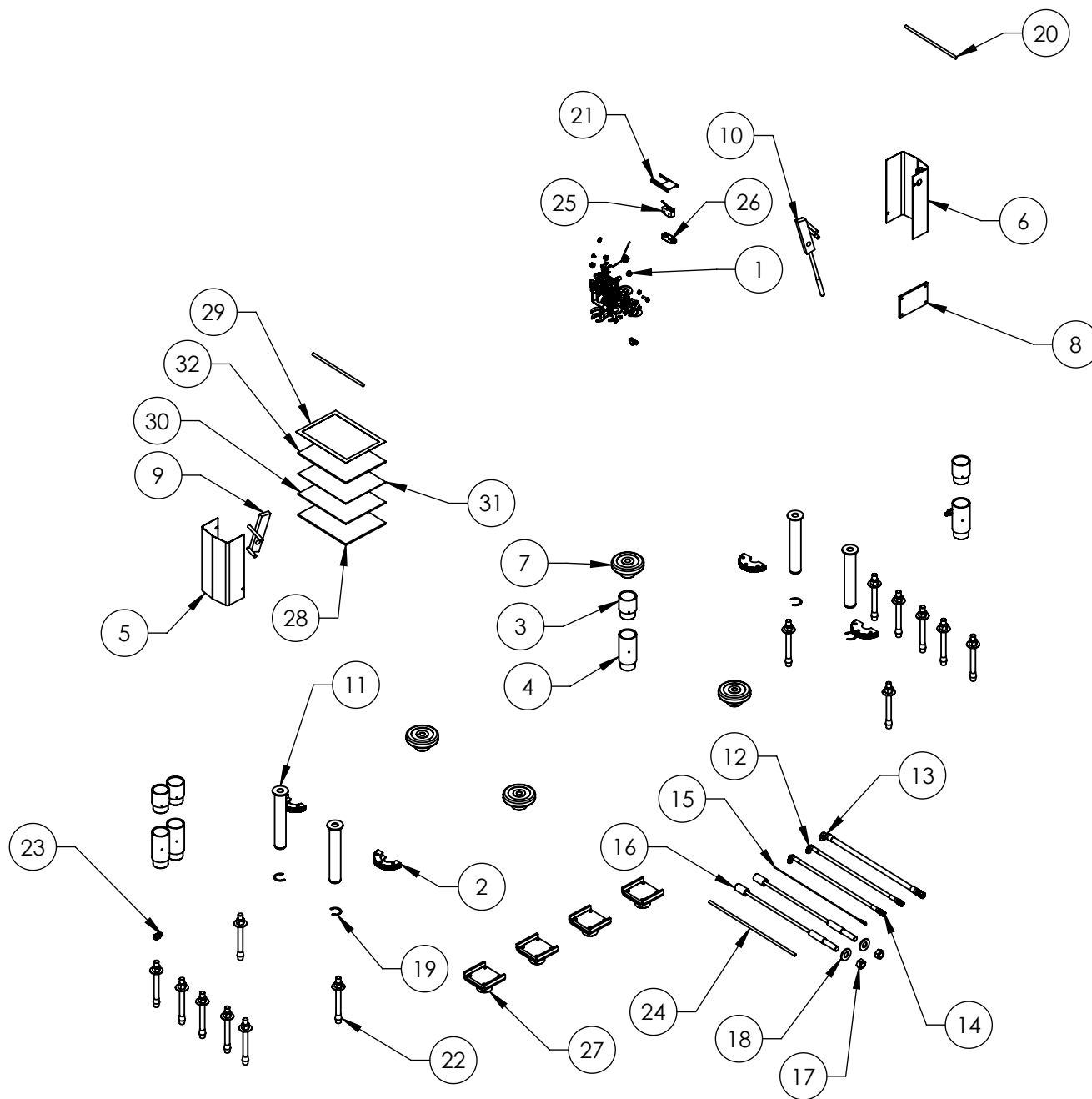
SIZE DWG. NO. REV  
**A** 5250043 **B**

SCALE: 1:28 SHEET 1 OF 2

# **NOTE: UNLESS OTHERWISE SPECIFIED.**

1. INSERT PARTS BAG INTO PARTS BOX FOR SHIPMENT
2. SEE SHIPPING INSTRUCTIONS FOR FINAL PACKAGING
3. THREAD 5535011 ONTO CABLES WITH 5545345 FOR SHIPMENT
4. FOR 5220116 SPECIFICATIONS REFER TO PART SPECIFICATION FORM  
(\* ) 5520116 QTY FOR REFERENCE ONLY

NEXT ASSEMBLY  
5260571

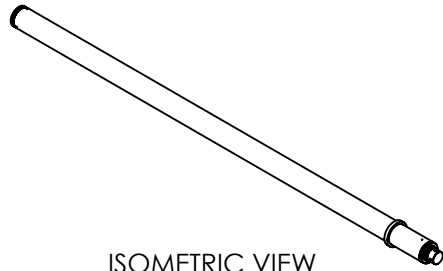


**BendPak** 1645 LEMONWOOD DR.  
SANTA PAULA, CA 93060

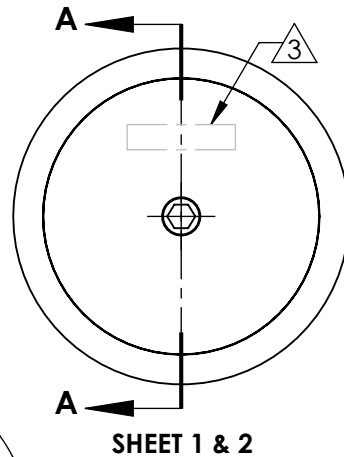
TITLE:  
XPR-15CL PARTS BOX

SIZE	DWG. NO.	REV
<b>A</b>	5250043	<b>B</b>
SCALE: 1:25		SHEET 2 OF 2

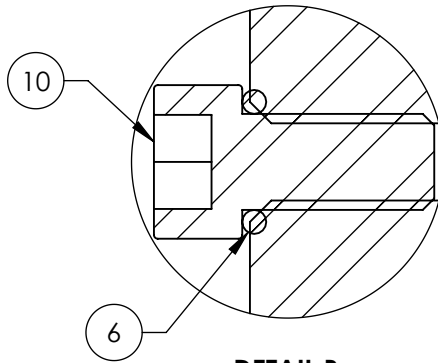
REVISION				
REV	DESCRIPTION	DATE	EDITED BY	ECO#
C	UPDATED BOM REVISION, CHANGED TEST PRESSURE TO 3600 psi	04/30/2012	TM	00517
D	UPDATED BOM REVISION	07/10/2012	TM	00534
E	REPLACED SOCS CR .25x20x.5 WITH 5585388, UPDATED STAMPED INFORMATION	12/23/2014	VB	00673



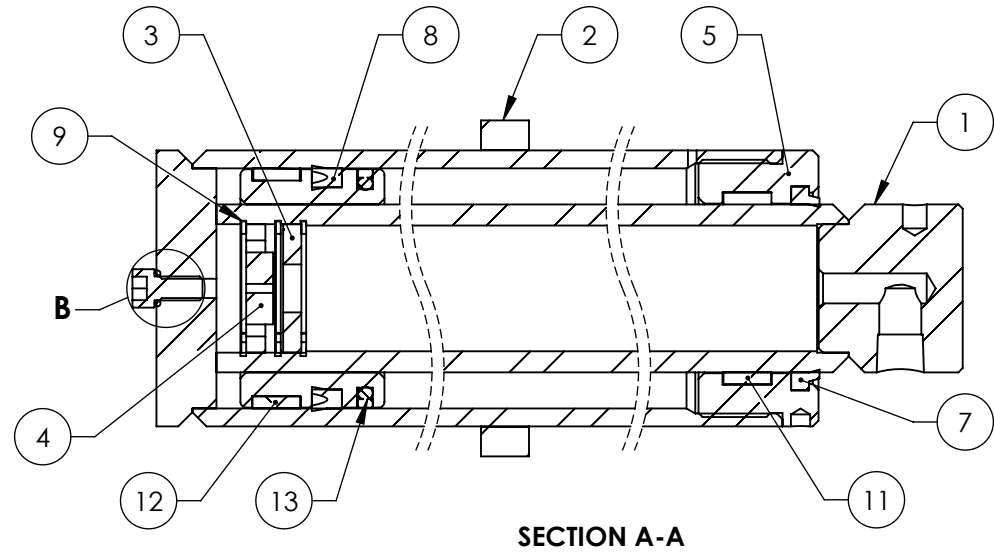
ISOMETRIC VIEW  
FOR REFERENCE ONLY  
DO NOT SCALE



SHEET 1 & 2



DETAIL B  
SCALE 2 : 1






SECTION A-A

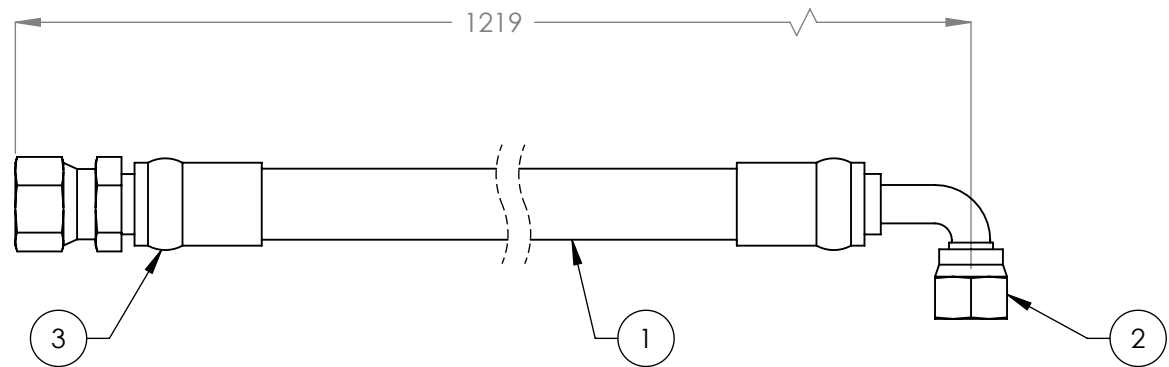
# **NOTE: UNLESS OTHERWISE SPECIFIED.**

- GREASE SEALS PRIOR TO ASSEMBLY
- PRESSURE TEST CYLINDER ASSEMBLY 100% TO 3,600 PSI. (NO LEAKS)  
MARK IN APPROXIMATE LOCATION WITH THE FOLLOWING  
INFORMATION: MANUFACTURER  
MONTH/YEAR  
PART NUMBER
- DISOGRIN 002-141, HERCULES DPU18-2.12-31 OR PARKER 4615-UP-18702125-312 MAY BE USED IN PLACE OF CUP SEAL UN 53.5-63.5
- PARKER 4615-SHD-01750, HERCULES ST-175 OR AFM D-1750 MAY BE USED IN PLACE OF RECO D-1750
- TRELLEBORG GR2C02250-C320 MAY BE USED IN PLACE OF WR 63.5-57.1-12.7 POM
- HERCULES 612-200-050 MAY BE USED IN PLACE OF WR-0200-0500-125

ITEM NO	PART NUMBER	DESCRIPTION	QTY	REV
1	700127	PISTON WELDMENT Ø2.5 x Ø1.75	1	D
2	700131	CYLINDER WELDMENT Ø2.5	1	C
3	700124	WASHER THROTTLE VALVE	1	B
4	700125	THROTTLE DIAPHRAGM Ø1.25	1	B
5	700121	HEAD CAP Ø2.5	1	C
6	-010 BUNA 70	O-RING	1	-
7	RECO D-1750	RECO D-1750	1	-
8	CUP SEAL UN 53.5-63.5	PISTON SEAL UN 53.5-63.57	1	-
9	Truarc N5000-131	INTERNAL RETAINING RING	3	-
10	5585388	SHCS 1/4-20 x 1/2"	1	-
11	WR-0200-0500-125	WEAR RING	1	-
12	WR 63.5-57.1-12.7 POM	WEAR RING	1	-
13	GLYD GS55044-0635	GLYD RING PISTON SEAL	1	-



DO NOT SCALE DRAWING		NAME	DATE				
DIMENSIONS ARE IN INCHES		DRAWN	AC	05/20/2010	 <b>BendPak.</b> 1645 LEMONWOOD DR. SANTA PAULA, CA 93060		
		CHECKED	VB	12/23/2014			
		THIRD ANGLE PROJECTION			TITLE:		
					CYLINDER ASSEMBLY Ø2.5 x 69		
		<p>PROPRIETARY AND CONFIDENTIAL</p> <p>THE INFORMATION CONTAINED IN THIS DRAWING IS THE SOLE PROPERTY OF <b>BENDPAK INC.</b> ANY REPRODUCTION IN PART OR AS A WHOLE WITHOUT THE WRITTEN PERMISSION OF <b>BENDPAK INC.</b> IS PROHIBITED.</p>			SIZE	DWG. NO.	REV
					<b>A</b>	5502305	E
		SCALE: 1:2			SHEET 1 OF 2		

REVISION				
REV	DESCRIPTION	DATE	EDITED BY	ECO#
A	PRODUCTION RELEASE, DERIVED FROM 800399	08/27/2009	TM	00293
A-001	UPDATED NEXT ASSEMBLY	09/08/2010	TM	00396
A-002	UPDATED NEXT ASSEMBLY	04/18/2011	MT	00454
B	UPDATED TITLE TO REFLECT WHERE USED, UPDATED NEXT ASSEMBLIES	01/12/2012	TM	00490
C	UPDATED TITLE TO REFLECT WHERE USED, UPDATED NEXT ASSEMBLIES	06/21/2013	TM	00605
C-001	UPDATED NEXT ASSEMBLIES	10/16/2014	TM	00663
C-002	UPDATED NEXT ASSEMBLIES	11/24/2015	TM	00738



ITEM NO	PART NUMBER	DESCRIPTION	QTY	REV
1	5570116	Ø10 ID HYDRAULIC HOSE	1144mm*	-
2	5550337	FTG ELB -06 CRIMP x -06 JIC	1	-
3	5550336	FTG NPL -06 CRIMP x -06 JIC	1	-

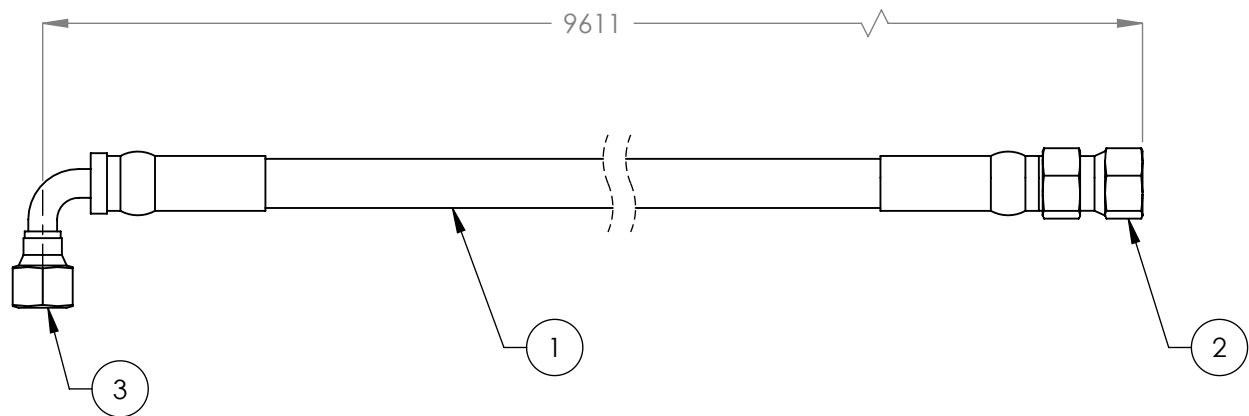
NEXT ASSEMBLY
5250039
5250040
5250041
5250042
5250043
5250044
5250045
5250046
5250047
5250048
5250049

DO NOT SCALE DRAWING		NAME	DATE	 <b>BendPak</b> 1645 LEMONWOOD DR. SANTA PAULA, CA 93060
		DRAWN	TM 08/27/2009	
		CHECKED	CA 02/22/2016	
DIMENSIONS ARE IN MM TOLERANCES: 0. = ±1.5 0.0 = ±1.0 0.00 = ±0.25 0.000 = ±0.13 ANGULAR: MACH ±2° SURFACE FINISH 1.6 ISO Ra µm FOR MACHINED SURFACES UNLESS OTHERWISE SPECIFIED		THIRD ANGLE PROJECTION 		TITLE: XPR HYDRAULIC HOSE ASSY Ø10 x 1219mm SB
		SIZE	DWG. NO.	REV
		A	5570017	C
SCALE: 1:2				SHEET 1 OF 1



**NOTE: UNLESS OTHERWISE SPECIFIED.**

- FOR ITEM 1 SPECIFICATIONS REFER TO PART SPECIFICATION FORM
- (\*)ITEM 1 QTY FOR REFERENCE ONLY

REVISION				
REV	DESCRIPTION	DATE	EDITED BY	ECO#
B	UPDATED NEXT ASSEMBLY AND ADDED FITTING CALL OUT IN TITLE	01/11/2010	TM	00293
C	UPDATED TITLE TO REFLECT WHERE USED	02/15/2012	TM	00490
C-001	UPDATED NEXT ASSEMBLIES	07/02/2013	TM	00605
D	REPLACED 5570110 WITH 5570129	12/01/2014	TM	00673
D-001	UPDATED NEXT ASSEMBLIES	12/16/2015	TM	00738



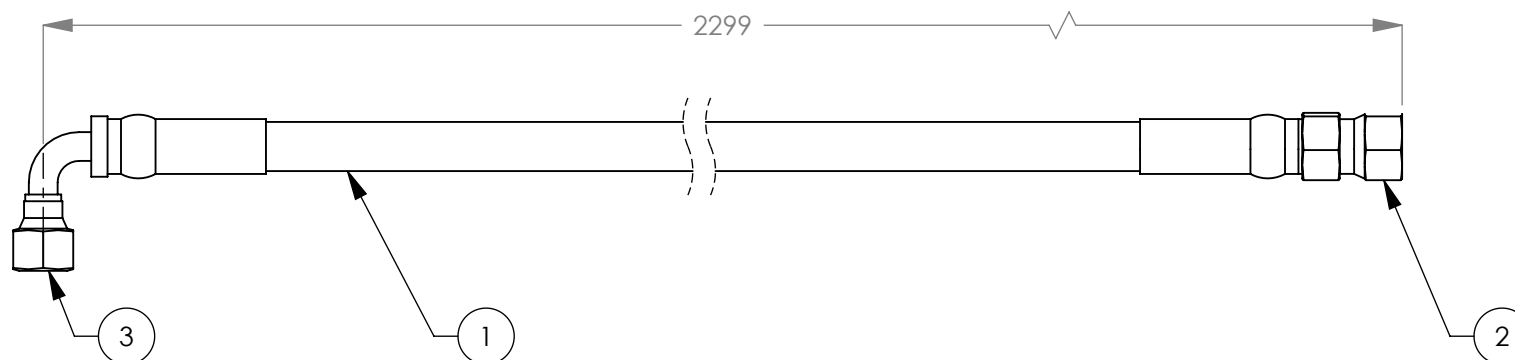
ITEM NO	PART NUMBER	DESCRIPTION	QTY	REV
1	5570129	Ø6.4 ID HYDRAULIC HOSE	9551mm*	--
2	5550325	FTG NPL Ø1/4 CRIMP x -04 JIC	1	--
3	5550345	FTG ELB Ø1/4 CRIMP x -04 JIC	1	--

DO NOT SCALE DRAWING		NAME	DATE	 <b>BendPak</b> <small>HYDRAULIC AUTOMATIC SERVICE EQUIPMENT</small> 1645 LEMONWOOD DR. SANTA PAULA, CA 93060
DIMENSIONS ARE IN MM		DRAWN	GJ	
TOLERANCES:		CHECKED	CA	
0. = ±1.5 0.0 = ±1.0 0.00 = ±0.25 0.000 = ±0.13  ANGULAR: MACH ±2° SURFACE FINISH 1.6 ISO Ra µm FOR MACHINED SURFACES UNLESS OTHERWISE SPECIFIED		THIRD ANGLE PROJECTION 		TITLE: XPR-12C/15/18C HYDRAULIC HOSE ASSY Ø6.35 x 9611mm SB
NEXT ASSEMBLY		PROPRIETARY AND CONFIDENTIAL THE INFORMATION CONTAINED IN THIS DRAWING IS THE SOLE PROPERTY OF BENDPAK INC. ANY REPRODUCTION IN PART OR AS A WHOLE WITHOUT THE WRITTEN PERMISSION OF BENDPAK INC. IS PROHIBITED.		SIZE DWG. NO. <b>A</b> 5570150
5250041 5250043 5250044		REV D		SCALE: 1:2 SHEET 1 OF 1

**NOTE: UNLESS OTHERWISE SPECIFIED.**

- FOR ITEM 1 SPECIFICATIONS REFER TO PART SPECIFICATION FORM
- (\*)ITEM 1 QTY FOR REFERENCE ONLY

REVISION		DATE	EDITED BY	ECO#
REV	DESCRIPTION			
C	UPDATED TITLE TO REFLECT WHERE USED, UPDATED NEXT ASSEMBLIES	02/07/2012	TM	00490
D	UPDATED TITLE TO REFLECT WHERE USED, UPDATED NEXT ASSEMBLIES	06/27/2017	TM	00605
D-001	UPDATED NEXT ASSEMBLIES	10/16/2014	TM	00663
E	REPLACED 5570110 WITH 5570129 TO REFLECT INVENTORY	11/20/2014	TM	00673
E-001	UPDATED NEXT ASSEMBLIES	11/24/2015	TM	00738




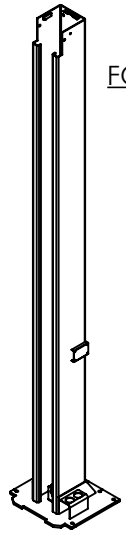
**NOTE: UNLESS OTHERWISE SPECIFIED.**

1. FOR ITEM 1 SPECIFICATIONS REFER TO PART SPECIFICATION FORM
2. (\*)ITEM 1 QTY FOR REFERENCE ONLY

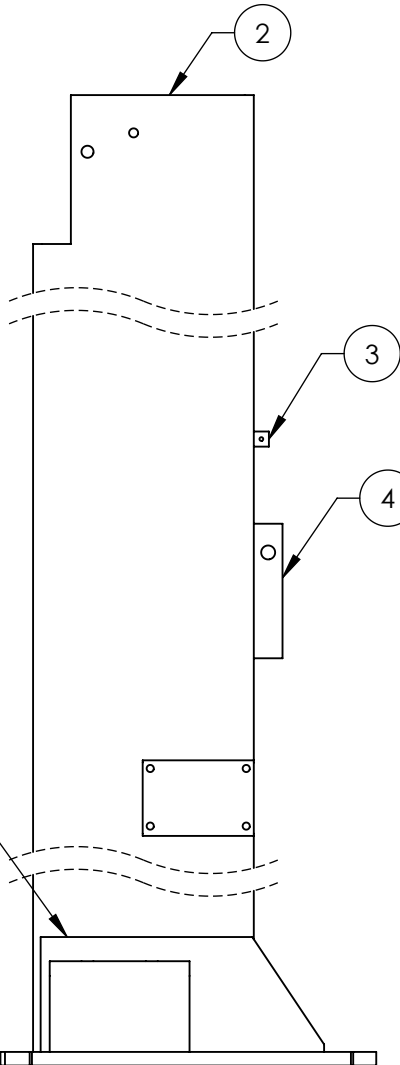
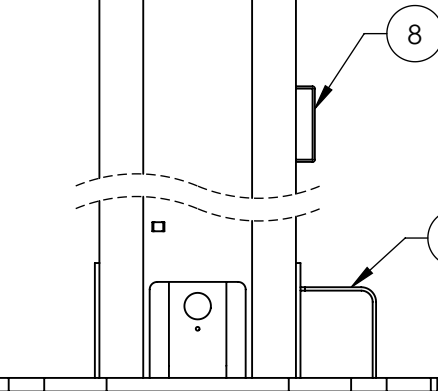
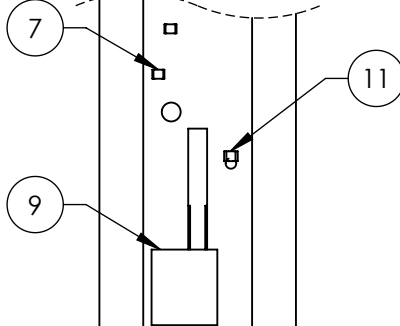
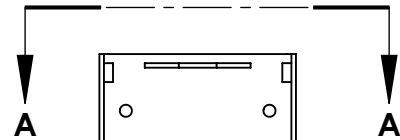
ITEM NO	PART NUMBER	DESCRIPTION	QTY	REV
1	5570129	Ø6.4 ID HYDRAULIC HOSE	2249mm*	--
2	5550325	FTG NPL Ø1/4 CRIMP x -04 JIC	1	--
3	5550345	FTG ELB Ø1/4 CRIMP x -04 JIC	1	--

NEXT ASSEMBLY
5250039
5250040
5250041
5250042
5250043
5250044
5250045
5250046
5250047
5250048
5250049

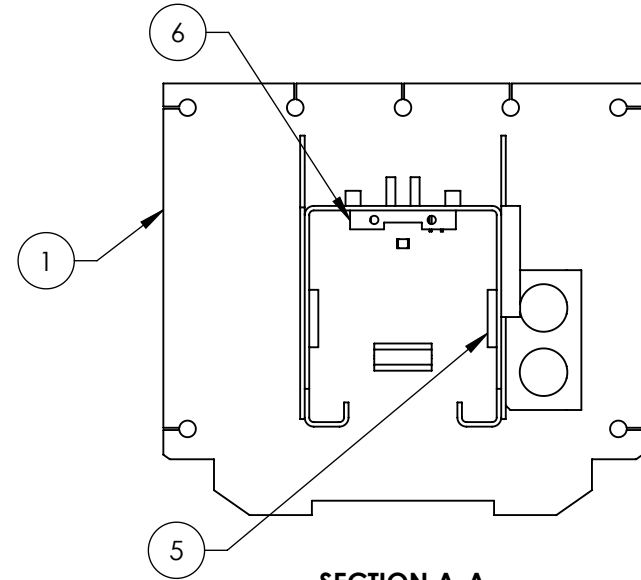
DO NOT SCALE DRAWING		NAME	DATE		
DRAWN		GJ	10/13/2008		
CHECKED		CA	02/22/2016		
THIRD ANGLE PROJECTION				TITLE: XPR CLEARFLOOR HYDRAULIC HOSE ASSY Ø6.35 x 2299mm SB	
DIMENSIONS ARE IN MM TOLERANCES: 0. =±1.5 0.0 =±1.0 0.00 =±0.25 0.000 =±0.13 ANGULAR: MACH±2° SURFACE FINISH 1.6 ISO Ra µm FOR MACHINED SURFACES UNLESS OTHERWISE SPECIFIED		PROPRIETARY AND CONFIDENTIAL THE INFORMATION CONTAINED IN THIS DRAWING IS THE SOLE PROPERTY OF BENDPAK INC. ANY REPRODUCTION IN PART OR AS A WHOLE WITHOUT THE WRITTEN PERMISSION OF BENDPAK INC. IS PROHIBITED.		SIZE DWG. NO.	REV
				A 5570832	E
				SCALE: 1:2	SHEET 1 OF 1



ISOMETRIC VIEW  
FOR REFERENCE ONLY  
DO NOT SCALE



REVISION		DATE	EDITED BY	ECO#
REV	DESCRIPTION			
E	UPDATED BOM REVISION	06/17/2013	TM	00605
F	TIGHTENED TOLERANCE OF DISTANCE OF 5736635, UPDATED BOM REVISION	12/01/2014	TM	00673
G	ADDED 5730075	12/15/2015	TM	00738



SECTION A-A

ITEM NO	PART NUMBER	DESCRIPTION	QTY	REV
1	5620358	XPR-12C/15/18C BASE PLATE WELDMENT	1	B
2	5701237	XPR-12C/15/18C POWER SIDE BARE POST	1	C
3	5760001	SAFETY COVER BLOCK	2	C
4	5736635	RTL/XPR SAFETY RELEASE PLATE	2	C
5	5735700	XPR TOP TROUGH SUPPORT	2	C
6	5701457	XPR TOP TROUGH TIE PLATE	1	C
7	5700699	SMALL HOSE RETAINER	13	A
8	5700001	MOUNTING BRACKET	1	B
9	5735228	XPR STIFFENING PLATE	1	B
10	5730270	XPR-12/15/18 POST GUSSET	2	B
11	5210004	GP/PCL/XPR SAFETY SHEAVE CLAMP	1	C
12	5730075	XPR POST ASSEMBLY LIFT HEAD FOOT GUARD	1	A

DO NOT SCALE DRAWING

NAME DATE

DRAWN TM 01/05/2010

CHECKED CA 02/16/2016

THIRD ANGLE PROJECTION



DIMENSIONS ARE IN MM  
TOLERANCES:  
0. =  $\pm 1.5$   
0.0 =  $\pm 0.5$

ANGULAR: 0. =  $\pm 2^\circ$

SURFACE FINISH 1.6 ISO Ra  $\mu$ m  
FOR MACHINED SURFACES  
UNLESS OTHERWISE SPECIFIED

PROPRIETARY AND CONFIDENTIAL  
THE INFORMATION CONTAINED IN THIS DRAWING IS  
THE SOLE PROPERTY OF BENDPAK INC. ANY  
REPRODUCTION IN PART OR AS A WHOLE WITHOUT  
THE WRITTEN PERMISSION OF BENDPAK INC. IS  
PROHIBITED.

**BendPak** 1645 LEMONWOOD DR.  
SANTA PAULA, CA 93060

TITLE: XPR-12C/15/18C POWER  
SIDE POST WELDMENT

SIZE DWG. NO. REV

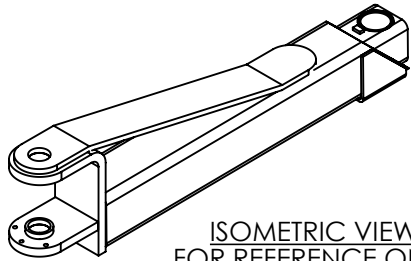
**A** 5600399 **G**

SCALE: 1:10 SHEET 1 OF 3

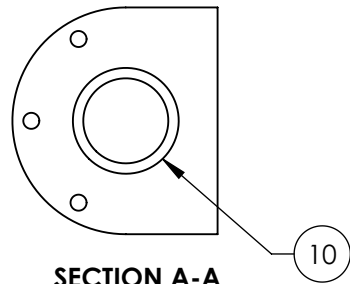
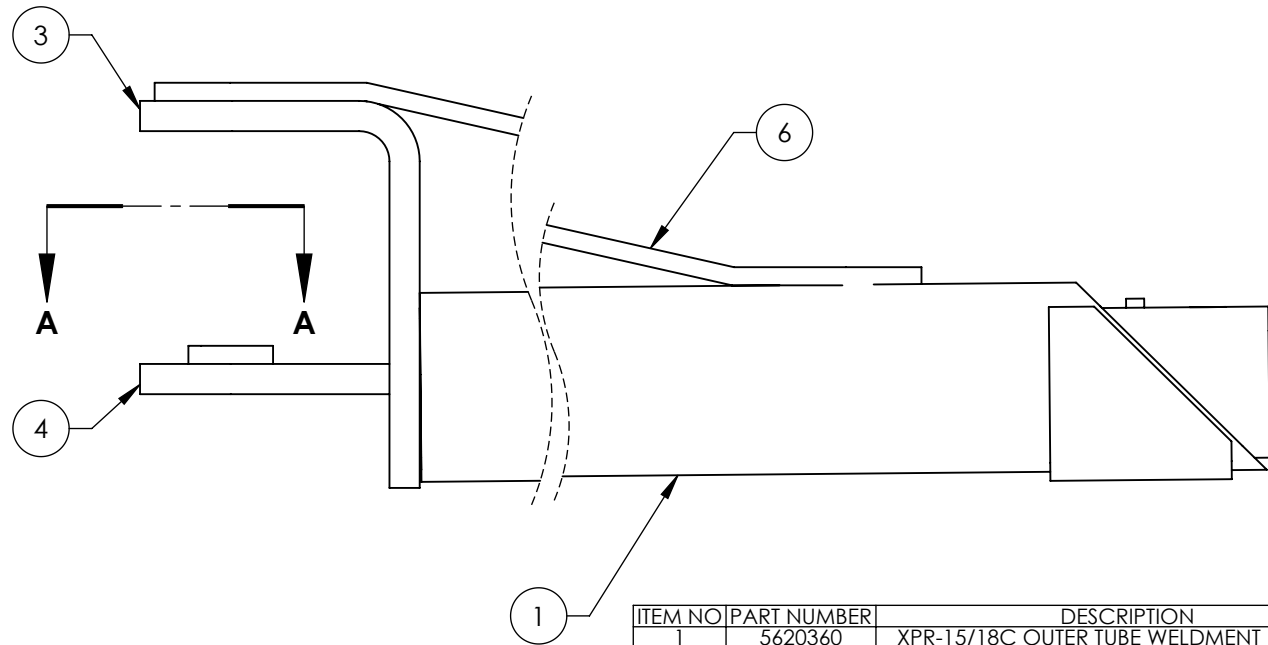
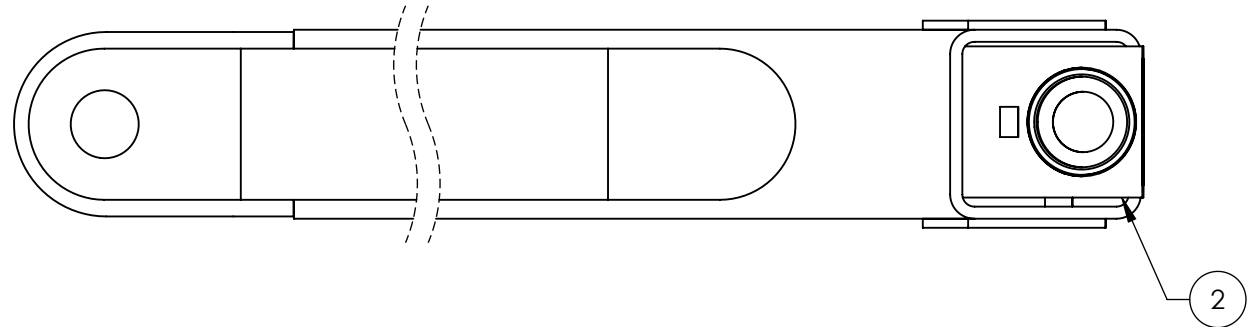
**NOTE: UNLESS OTHERWISE SPECIFIED.**

- BREAK AND DEBURR ALL SHARP EDGES 0.3mm
- REMOVE ALL WELD SPLATTER
- DIMENSIONS SHOWN ARE AFTER PAINTING
- PAINT BENDPAK BLUE

NEXT ASSEMBLY
5215218
5215293



ISOMETRIC VIEW  
FOR REFERENCE ONLY  
DO NOT SCALE



SECTION A-A  
SCALE 1 : 4

**NOTE: UNLESS OTHERWISE SPECIFIED.**

1. BREAK AND DEBURR ALL SHARP EDGES 0.3mm
2. REMOVE ALL WELD SPLATTER
3. DIMENSIONS SHOWN ARE AFTER PAINTING
4. PAINT BENDPAK YELLOW
5. 5620309 MUST SLIDE FREELY

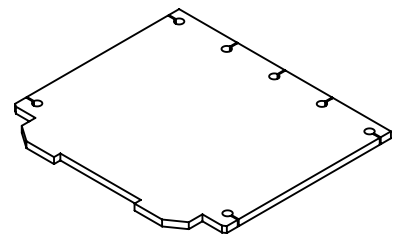
REVISION				
REV	DESCRIPTION	DATE	EDITED BY	ECO#
A	PRODUCTION RELEASE, DERIVED FROM 5600394	06/24/2015	JM	00708
B	UPDATED BOM REVISION	09/22/2015	JM	00729
C	UPDATED TITLE TO REFLECT WHERE USED, UPDATED BOM REVISION	03/09/2016	TM	00750

ITEM NO	PART NUMBER	DESCRIPTION	QTY	REV
1	5620360	XPR-15/18C OUTER TUBE WELDMENT (858mm)	1	D
2	5620309	XPR-15/18 INNER ARM WELDMENT (860mm)	1	C
3	5701232	XPR-15/18C ARM EAR	1	C
4	5701069	XPR-15/18C BOLT ON ARM EAR	1	C
5	5746568	XPR-15/18C ARM BEARING RING	1	C
6	5736281	XPR-15/18C ARM SUPPORT	1	C

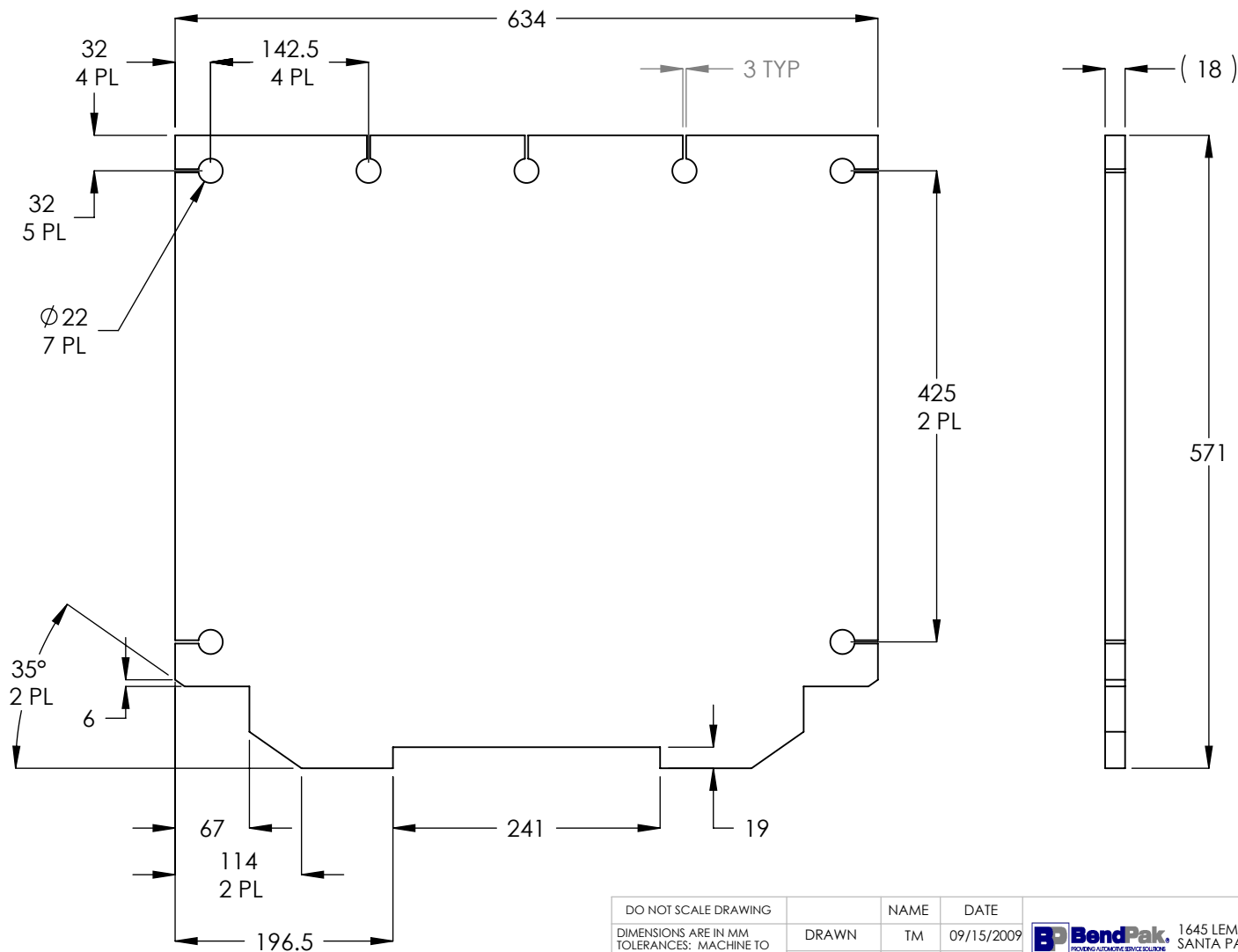
DO NOT SCALE DRAWING		NAME	DATE
DRAWN		JM	06/24/2015
CHECKED			
THIRD ANGLE PROJECTION			
DIMENSIONS ARE IN MM TOLERANCES: 0. = ±1.5 0.0 = ±0.5 ANGULAR: 0. = ±2° SURFACE FINISH 1.6 ISO Ra µm FOR MACHINED SURFACES UNLESS OTHERWISE SPECIFIED		<b>BendPak</b> 1645 LEMONWOOD DR. SANTA PAULA, CA 93060	
TITLE: XPR-15/18CL ARM WELDMENT		SCALE: 1:5	
SIZE DWG. NO. A 5600986		REV C	
NEXT ASSEMBLY 5215273		SHEET 1 OF 2	

PROPRIETARY AND CONFIDENTIAL  
THE INFORMATION CONTAINED IN THIS DRAWING IS  
THE SOLE PROPERTY OF BENDPAK INC. ANY  
REPRODUCTION IN PART OR AS A WHOLE WITHOUT  
THE WRITTEN PERMISSION OF BENDPAK INC. IS  
PROHIBITED.








ISOMETRIC VIEW  
FOR REFERENCE ONLY  
DO NOT SCALE



REVISION				
REV	DESCRIPTION	DATE	EDITED BY	ECO#
A	PRODUCTION RELEASE, DERIVED FROM 800725	09/16/2009	TM	00293
B	ADDED RECTANGULAR CUTS	03/21/2011	TM	00449

DO NOT SCALE DRAWING		NAME	DATE	 <b>BendPak</b> 1645 LEMONWOOD DR. SANTA PAULA, CA 93060	
DIMENSIONS ARE IN MM TOLERANCES: MACHINE TO 0. = ±1.5 0.0 = ±0.5 0.00 = ±0.13		DRAWN	TM 09/15/2009		
ANGULAR: MACHINE TO 0. = ±½°		CHECKED	MT 03/30/2011		
SURFACE FINISH 1.6 ISO Ra µm FOR MACHINED SURFACES UNLESS OTHERWISE SPECIFIED		THIRD ANGLE PROJECTION		TITLE:	
MATERIAL: HR ASTM A36 OR Q235 GB/T 700				XPR-12C/FD/15/18C BASE PLATE	
SIZE: 18mm THICK				SIZE DWG. NO.	REV
THE INFORMATION CONTAINED IN THIS DRAWING IS THE SOLE PROPERTY OF BENDPAK INC. ANY REPRODUCTION IN PART OR AS A WHOLE WITHOUT THE WRITTEN PERMISSION OF BENDPAK INC. IS PROHIBITED.		<b>A</b> 5736526		<b>B</b>	
		SCALE: 1:6		SHEET 1 OF 1	

**NOTE: UNLESS OTHERWISE SPECIFIED.**

- BREAK AND DEBURR ALL SHARP EDGES 0.3mm

NEXT ASSEMBLY
5620358
5620372
5620373

## PART SPECIFICATION FORM

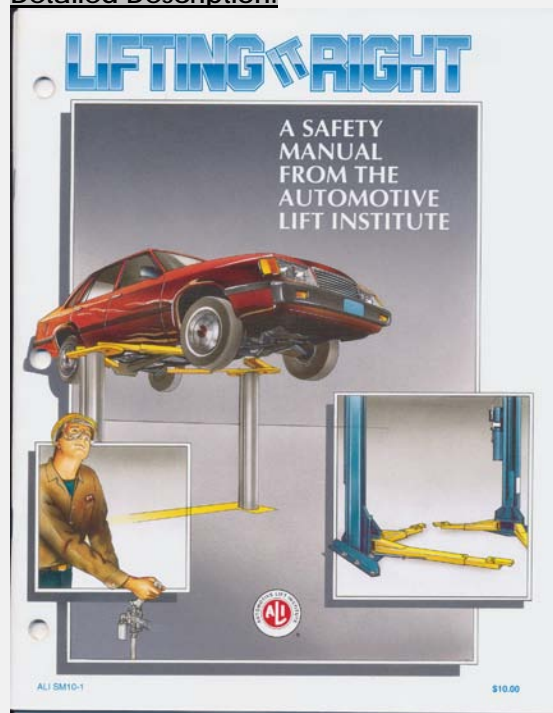
<b>BENDPAK Number:</b>	5900147
<b>MRP Description:</b>	SAFETY MANUAL ALI / SM 93-1
<b>Date:</b>	12/28/2010
<b>ECO :</b>	00431

### 1. Engineering Specification

**Application:**

ALI SAFETY MANUAL

**Detailed Description:**



### 2. Vendor Information

Approved Vendor	Vendor Part #	Contact #	Preferred Vendor
1)			

## PART SPECIFICATION FORM

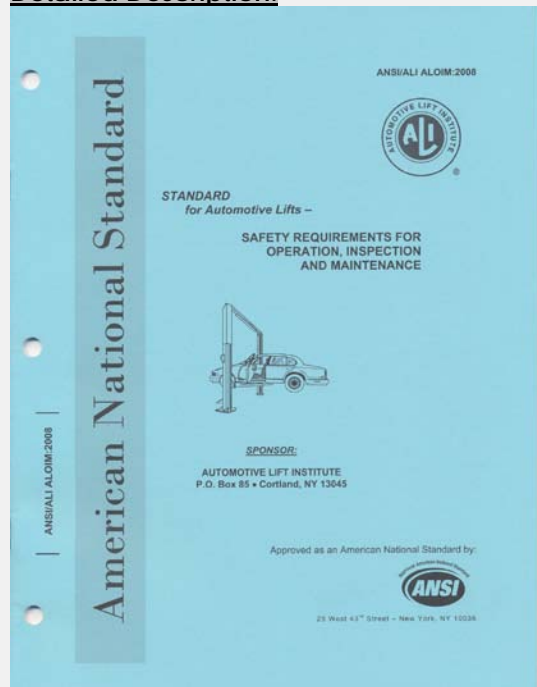
<b>BENDPAK Number:</b>	5900152
<b>MRP Description:</b>	ALIGN OIM OPERATION INSPECTION & MAINTENANCE
<b>Date:</b>	12/28/2010
<b>ECO :</b>	00431

### 1. Engineering Specification

**Application:**

ALI OPERATION INSPECTION & MAINTENANCE MANUAL

**Detailed Description:**



### 2. Vendor Information

Approved Vendor	Vendor Part #	Contact #	Preferred Vendor
1)			

## PART SPECIFICATION FORM

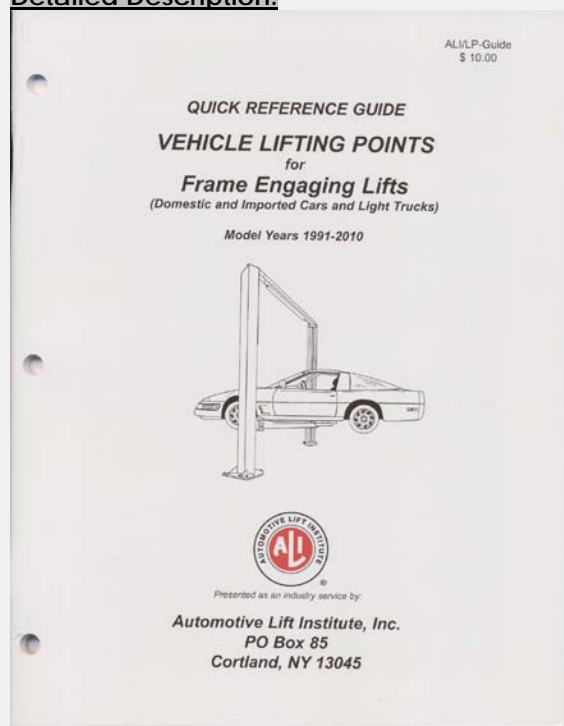
<b>BENDPAK Number:</b>	5900280
<b>MRP Description:</b>	ALI/LP FRAME ENGAGING LIFTS GUIDE
<b>Date:</b>	12/28/2010
<b>ECO :</b>	00431

### 1. Engineering Specification

**Application:**

ALI LIFTING GUIDE

**Detailed Description:**



### 2. Vendor Information

Approved Vendor	Vendor Part #	Contact #	Preferred Vendor
1)			

## PART SPECIFICATION FORM

<b>BENDPAK Number:</b>	5900370
<b>MRP Description:</b>	XPR-12CL-18CL INSTALLATION MANUAL
<b>Date:</b>	03/15/2016
<b>ECO :</b>	00750

### 1. Engineering Specification

#### Application:

INSTALLATION MANUAL

#### Detailed Description:

**WARNING**

400V 50Hz SUPPLY DETAILS ARE INCLUDED WITH ELECTRICAL CONTROL BOX. DISREGARD SUPPLY WIRING DETAILS IN THIS MANUAL.

**EUROPEAN USERS**

**IMPORTANT SAFETY INSTRUCTIONS**  
SAVE THESE INSTRUCTIONS


PLEASE READ THE ENTIRE CONTENTS OF THIS MANUAL PRIOR TO INSTALLATION AND OPERATION. BY PROCEEDING WITH LIFT INSTALLATION AND OPERATION YOU AGREE THAT YOU FULLY UNDERSTAND AND COMPREHEND THE FULL CONTENTS OF THIS MANUAL. FORWARD THIS MANUAL TO ALL OPERATORS. FAILURE TO OPERATE THIS EQUIPMENT AS DIRECTED MAY CAUSE INJURY OR DEATH.

MAN REV A 03-01-2016  
4/16/2003/19


**INSTALLATION AND OPERATION MANUAL**

12,000 /15,000/18,000 POUND CAPACITY  
SURFACE MOUNTED TWO-POST LIFTS

MODELS:  
XPR-12CL  
XPR-12CL-192  
XPR-12CL-LWB  
XPR-12CL-LWB-192  
XPR-15CL  
XPR-15CL-192  
XPR-18CL  
XPR-18CL-192



**READ FIRST**




Do not operate this machine until you read and understand all the warnings, warnings and operating in this manual.

**ORIGINAL INSTRUCTIONS IN ENGLISH LANGUAGE**

**RECEIVING**  
The shipment should be thoroughly inspected as soon as it is received. The signed Bill of Lading is acknowledgement by the shipping carrier as receipt of this product as listed in your invoice as being in a good condition of shipment. If any of these goods listed on this Bill of Lading are missing or damaged, do not accept goods until the shipping carrier makes a notation on the freight bill of the missing or damaged goods. Do this for your own protection.

**BE SAFE**  
Your new lift was designed and built with safety in mind. However, your overall safety can be increased with proper training and thoughtful operation on the part of the operator. DO NOT operate or repair this equipment without reading this manual and the important safety instructions shown inside. Keep this operation manual near the lift at all times. Make sure that ALL USERS read and understand this manual.



1645 Lemonwood Dr.  
Santa Paula, CA. 93060, USA  
Toll Free 1-800-253-2363  
Tel: 1-805-933-9970  
www.bendpak.com

### 2. Vendor Information

Approved Vendor	Vendor Part #	Contact #	Preferred Vendor
1)			

## PART SPECIFICATION FORM

BENDPAK Number:	5905109
MRP Description:	WARNING ALI/WL 101
Date:	06/18/2013
ECO :	00605

### 1. Engineering Specification

#### Application:

ALI 2 POST SAFETY STICKER KIT

#### Detailed Description:

SIZE: 14" L x 8.5" W (356mm x 216mm)

**Automotive Lift Institute, Inc**  
**WL 101 Series**  
**Label Kit**

**SAFETY INSTRUCTIONS**

Read operating and safety manuals before using lift.

**SAFETY INSTRUCTIONS**

Proper maintenance and inspection is necessary for safe operation.

**SAFETY INSTRUCTIONS**

Do not operate a damaged lift.

The messages and pictographs shown are generic in nature and are meant to generally represent hazards common to all automotive lifts regardless of specific style.

Funding for the development and validation of these labels was provided by the Automotive Lift Institute, PO Box 33116 Indianapolis, IN 46233.

They are provided by copyright. Set of labels may be obtained from ALI or its member companies.

© 1992 by ALI, Inc. ALI/WL101

### 2. Vendor Information

Approved Vendor	Vendor Part #	Contact #	Preferred Vendor
1)			

## PART SPECIFICATION FORM

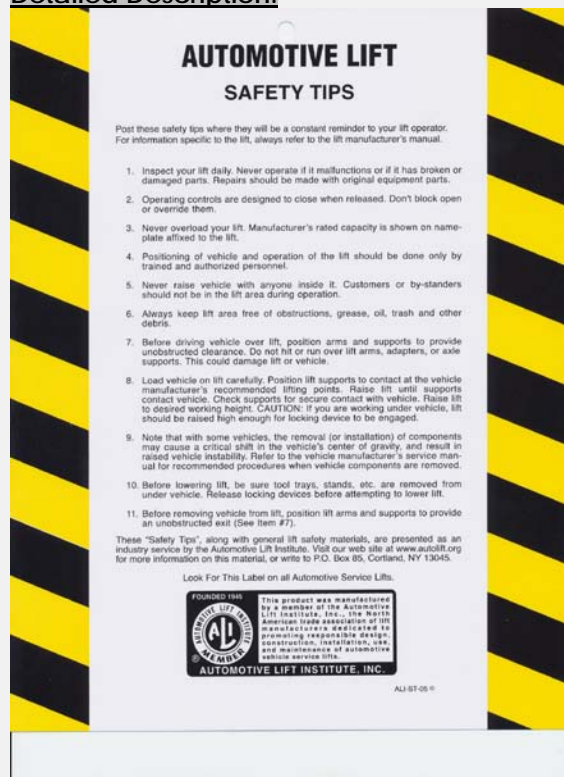
<b>BENDPAK Number:</b>	5905151
<b>MRP Description:</b>	SAFETY TIPS CARD ALI-ST 90
<b>Date:</b>	12/28/2010
<b>ECO :</b>	00431

### 1. Engineering Specification

#### Application:

ALI SAFETY TIPS

#### Detailed Description:



### 2. Vendor Information

Approved Vendor	Vendor Part #	Contact #	Preferred Vendor
1)			



## PART SPECIFICATION FORM

<b>BENDPAK Number:</b>	5905177
<b>MRP Description:</b>	TO PROLONG LIFT OF TWO
<b>Date:</b>	06/18/2013
<b>ECO :</b>	00605

### 1. Engineering Specification

**Application:**

RED CYLINDER WARNING

**Detailed Description:**

SIZE: 3" L x 1.75" W (76mm x 44mm)

**PLEASE READ**

Internal packing oil may cause the cylinders to bleed oil during start up. This is normal. To extend cylinder and seal life, raise the lift to full height at least once every day.

### 2. Vendor Information

Approved Vendor	Vendor Part #	Contact #	Preferred Vendor
1)			



# **PLEASE READ**

Internal packing oil may cause the cylinders to bleed oil during start up. This is normal. To extend cylinder and seal life, raise the lift to full height at least once every day.

## PART SPECIFICATION FORM

<b>BENDPAK Number:</b>	5905311
<b>MRP Description:</b>	BENDPAK LABEL; 4 x 38" WHITE INK
<b>Date:</b>	05/13/2015
<b>ECO :</b>	00689

### 1. Engineering Specification

**Application:**

BENDPAK LABEL

**Detailed Description:**



**SIZE:** 38" L x 4.25" W (965mm x 108mm)

- Material: Yellow Represents Clear Adhesive PET
- Size: 4.25"W x 38"H
- Thickness: 4 Mil
- Finish: Polished
- Ink: U.V. protected, Opaque White
- Print Process: Silk Screen, 85 line-screen (Opaque White ink, clear adhesive PET will fill in blank areas.)
- Lamination: Clear-gloss over-laminate for abrasion, chemical, and ultra violet protection

### 2. Vendor Information

Approved Vendor	Vendor Part #	Contact #	Preferred Vendor
1)			

# B

# E

# N

# D

# P

# A

# K

# BP

## ABOVE-GROUND LIFTS



**BendPak®**  
PROVIDING AUTOMOTIVE SERVICE SOLUTIONS



1645 Lemonwood Drive  
Santa Paula, CA 93060  
U.S.A.  
(805) 933-9970  
[www.bendpak.com](http://www.bendpak.com)

P/N 5905311

## PART SPECIFICATION FORM

BENDPAK Number:	5905405
MRP Description:	MAX CAP DANGER 15K
Date:	06/20/2013
ECO :	00605

### 1. Engineering Specification

**Application:**

LIFT CAPACITY STICKER

**Detailed Description:**



P/N 5905405

SIZE: 3.25" L x 4.5" W (82mm x 114mm)

### 2. Vendor Information

Approved Vendor	Vendor Part #	Contact #	Preferred Vendor
1)			

# **DANGER**

## **THE MAXIMUM LIFTING CAPACITY FOR THIS LIFT IS DESCRIBED BELOW**

**Maximum Lifting Capacity**

**15,000 lbs. / 6804 kg**

**Max. Lifting Cap. / Front of Lift Center**

**7500 lbs. / 3402 kg**

**Max. Lifting Cap. / Rear of Lift Center**

**7500 lbs. / 3402 kg**

**Exceeding the weight capacity of this lift can damage lift and/or property and may cause personal harm, injury or death to operators and/or bystanders. All vehicles MUST be positioned on lift with CENTER OF GRAVITY midway between adapters and/or centered on runways. Damage to lift due to overloading or misuse IS NOT covered under warranty.**

## PART SPECIFICATION FORM

<b>BENDPAK Number:</b>	5905465
<b>MRP Description:</b>	MANUFACTURER LABEL
<b>Date:</b>	05/07/2013
<b>ECO :</b>	00593

### 1. Engineering Specification

#### Application:

MANUFACTURER LABEL

#### Detailed Description:

MFD. BY BENDPAK INC.

LIFT TYPE: SURFACE MOUNT      CAPACITY: MED/HVY DTY  
 POWER: ELECTRIC/HYDRAULIC      ANCHORS: AS EQUIPPED  
 INSTALLATION - SEE OWNERS GUIDE OR CONTACT FACTORY

#### SHIPPING DAMAGE CLAIMS

WHEN THIS EQUIPMENT IS SHIPPED, TITLE PASSES TO THE PURCHASER UPON RECEIPT FROM THE CARRIER. CONSEQUENTLY, CLAIMS FOR THE MATERIAL DAMAGED IN SHIPMENT MUST BE MADE BY THE PURCHASER AGAINST THE TRANSPORTATION COMPANY AT THE TIME SHIPMENT IS RECEIVED.

PLEASE READ ALL OPERATORS/USERS MANUAL(S) PRIOR TO INSTALLATION AND OPERATION. UNDERSTAND AND COMPREHEND THE FULL CONTENTS OF EACH MANUAL(S) PRIOR TO INSTALLATION AND OPERATION. DELIVER THE MANUAL(S) TO ALL OPERATORS. FAILURE TO OPERATE THIS EQUIPMENT AS DIRECTED MAY CAUSE INJURY OR DEATH.

#### IMPORTANT NOTE:

BENDPAK LIFTS ARE SUPPLIED WITH CONCRETE FASTENERS MEETING THE CRITERIA AS PRESCRIBED BY ASTM E488 - 96(2003). LIFT BUYERS ARE RESPONSIBLE FOR ANY SPECIAL REGIONAL STRUCTURAL AND/OR SEISMIC ANCHORING REQUIREMENTS SPECIFIED BY ANY OTHER AGENCIES AND/OR CODES SUCH AS THE UNIFORM BUILDING CODE (UBC) AND/OR INTERNATIONAL BUILDING CODE (IBC).



INTERNAL BAR CODE - FOR FACTORY AUDIT ONLY 34086

BPK | STYOT | P20KVR | X18576 | HVY DTY/ GVR  
 832

THE MANUFACTURE, USE, SALE OR IMPORT OF THIS PRODUCT MAY BE SUBJECT TO ONE OR MORE UNITED STATES PATENTS, OR PENDING APPLICATIONS, OWNED BY BENDPAK, INC.

ENGINEERED BY BENDPAK INC USA

MADE IN CHINA

SIZE: 5.125" L x 5.125" W (130mm x 130mm)

### 2. Vendor Information

Approved Vendor	Vendor Part #	Contact #	Preferred Vendor
1)			

MFD. BY BENDPAK INC.

LIFT TYPE: SURFACE MOUNT

CAPACITY: MED/HVY DTY

POWER: ELECTRIC/HYDRAULIC

ANCHORS: AS EQUIPPED

INSTALLATION - SEE OWNERS GUIDE OR CONTACT FACTORY

#### SHIPPING DAMAGE CLAIMS

WHEN THIS EQUIPMENT IS SHIPPED, TITLE PASSES TO THE PURCHASER UPON RECEIPT FROM THE CARRIER. CONSEQUENTLY, CLAIMS FOR THE MATERIAL DAMAGED IN SHIPMENT MUST BE MADE BY THE PURCHASER AGAINST THE TRANSPORTATION COMPANY AT THE TIME SHIPMENT IS RECEIVED.

PLEASE READ ALL OPERATORS/USERS MANUAL(S) PRIOR TO INSTALLATION AND OPERATION. UNDERSTAND AND COMPREHEND THE FULL CONTENTS OF EACH MANUAL(S) PRIOR TO INSTALLATION AND OPERATION. DELIVER THE MANUAL(S) TO ALL OPERATORS. FAILURE TO OPERATE THIS EQUIPMENT AS DIRECTED MAY CAUSE INJURY OR DEATH.

#### IMPORTANT NOTE:

BENDPAK LIFTS ARE SUPPLIED WITH CONCRETE FASTENERS MEETING THE CRITERIA AS PRESCRIBED BY ASTM E488 - 96(2003). LIFT BUYERS ARE RESPONSIBLE FOR ANY SPECIAL REGIONAL STRUCTURAL AND/OR SEISMIC ANCHORING REQUIREMENTS SPECIFIED BY ANY OTHER AGENCIES AND/OR CODES SUCH AS THE UNIFORM BUILDING CODE (UBC) AND/OR INTERNATIONAL BUILDING CODE (IBC).



INTERNAL BAR CODE - FOR FACTORY AUDIT ONLY 34086

BPK

STYOT

P20KVR

X18576

HVY DTY/ GVR  
832

THE MANUFACTURE, USE, SALE OR IMPORT OF THIS PRODUCT MAY BE SUBJECT TO ONE OR MORE UNITED STATES PATENTS, OR PENDING APPLICATIONS, OWNED BY BENDPAK, INC.

ENGINEERED BY BENDPAK INC USA

MADE IN CHINA

## PART SPECIFICATION FORM

<b>BENDPAK Number:</b>	5905555
<b>MRP Description:</b>	2-POST SAFETY DECAL
<b>Date:</b>	06/18/2013
<b>ECO :</b>	00605

### 1. Engineering Specification

**Application:**

2-POST SAFETY DECAL

**Detailed Description:**



**SIZE:** 28.5" L x 4" W (724mm x 100mm)

### 2. Vendor Information

Approved Vendor	Vendor Part #	Contact #	Preferred Vendor
1)			



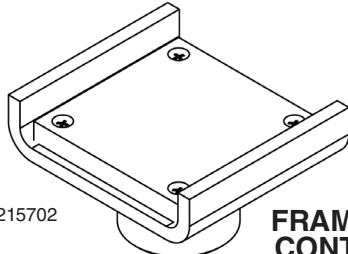
# DANGER



**Long wheelbase vehicles can damage lift and/or cause personal harm or injury to operators if loaded incorrectly.**

**All vehicles MUST be positioned on lift with CENTER OF GRAVITY midway between adapters.**

# DANGER



SKU# 5215702

**FRAME CRADLE CONTACT PADS**

## USE PROPER ADAPTERS

Do not attempt to lift trucks or other frame type vehicles with standard flat contact pads. Frame cradle contact pads are recommended for use when lifting trucks, vans, or other frame vehicles. NEVER use lift with missing or damaged rubber pads. ALWAYS REPLACE rubber contact pads when worn or damaged. Contact BendPak or your BendPak dealer for product information.

# WARNING

## WIRE ROPE INSPECTION AND MAINTENANCE

- Lifting cables should be replaced every (3) three years or when visible signs of damage are apparent. DO NOT USE LIFT WITH DEFECTIVE OR WORN CABLES.
- Wire rope should be maintained in a well-lubricated condition at all times. Wire rope is only fully protected when each wire strand is lubricated both internal and external. Excessive wear will shorten the life of the wire rope. The factory suggests wire rope lubricant that penetrates to the core of the rope and provides long-term lubrication between each individual strand. In order to make sure that the inner layers of the rope remain well lubricated, lubrication should be carried out at intervals not exceeding three (3) months during operation.
- All sheaves and guide rollers in contact with the moving wire rope should be given regular visual checks for surface wear and lubricated to make sure that they run freely. This operation should be carried out at appropriate intervals generally not exceeding three (3) months during operation. For all sheave axles, the factory recommends standard wheel bearing grease. For all sheaves and/or guide rollers, the factory recommends 90-WT gear oil or similar heavy lubricant applied by any method including pump/spray dispensing, brush, hand and/or swabbing.

**Failure to read, understand and follow these instructions may cause death or serious injury. Read and understand these instructions before using lift.**

## IMPORTANT OPERATION / MAINTENANCE INSTRUCTIONS - PLEASE READ

### TO RAISE LIFT

- ✓ Read Operating and Safety manuals before using lift.
- ✓ Always lift vehicle according to manufacturer's recommended lifting points.
- ✓ Position vehicle between columns. Adjust swing arms so that vehicle is positioned with the center of gravity midway between pads.
- ✓ Position lift contact pads at manufacturers recommended lifting points.
- ✓ Use lift adapters as needed. Never exceed 9" of pad/adaptor height.
- ✓ Raise lift by pressing RAISE BUTTON on power unit until contact pads make contact with the underside of the vehicle.
- ✓ Recheck to make sure vehicle is secure.
- ✓ Raise vehicle to desired working height then press power unit LOWERING HANDLE until lift carriages rest onto nearest safety lock position.
- ✓ Maintain visual contact with vehicle and surrounding area at all times while raising lift.
- ✓ **STOP IMMEDIATELY** if load shifts or becomes unlevel.
- ✓ Always ensure safety locks are engaged before any attempt is made to work on or near vehicle.
- ✓ Always ensure lift contact pads are making full contact with vehicle before any attempt is made to work on or near vehicle.

### TO LOWER LIFT

- ✓ Raise lift by pressing RAISE BUTTON on power unit. Elevate lift at least two inches to allow adequate clearance for the locks to clear.
- ✓ Clear safety locks by maintaining pressure on SAFETY LOCK RELEASE HANDLE to its furthest travel.
- ✓ Be sure tool trays, stands or personnel are removed from under vehicle.
- ✓ Lower vehicle by pressing power unit lowering handle until lift has descended completely.
- ✓ Maintain visual contact with vehicle and surrounding area at all times while lowering lift.
- ✓ **STOP IMMEDIATELY** if load shifts or becomes unlevel.
- ✓ Before removing vehicle from lift area, position lift arms to provide unobstructed exit.
- ✓ NEVER, drive over lift arms.

### REQUIRED MONTHLY MAINTENANCE

- ✓ ALWAYS consult operation manual for factory recommended maintenance.
- ✓ Check arm restraints for proper operation.
- ✓ Check all chain/cable connections, bolts and pins to insure proper mounting.
- ✓ Visually inspect safety locks for proper operation.
- ✓ Visually inspect concrete floor. DO NOT USE LIFT if concrete foundation shows signs of deterioration.
- ✓ Inspect all anchor bolts and retighten if necessary.
- ✓ Check columns for squareness and plumb.
- ✓ Inspect all pivot pins making sure they are properly secured.
- ✓ Check equalizer cable tension – cables must have equal tension - adjust if necessary.
- ✓ Inspect all lift pads, replace if necessary.
- ✓ If lift is equipped with overhead cut-off switch, check for proper operation.

### WARNING!

1. **WARNING:** If cement anchor bolts are loose, or any component of the lift is found to be defective, **DO NOT USE LIFT!**
2. Never operate the lift with any person or equipment below.
3. Never exceed rated capacity.
4. Always insure safety locks are engaged before any attempt is made to work on or near vehicle.
5. Never leave lift in an elevated position unless the safety locks are engaged.
6. Do not permit electric motor to get wet! Motor damage caused by dampness is not covered under warranty.

### CAUTION



**NEVER LIFT ANY VEHICLE IN ANY MANNER WITH LESS THAN FOUR (4) ARMS. RATED CAPACITY OF EACH LIFT ARM IS NO GREATER THAN ONE FOURTH (1/4) OF THE OVERALL LIFTING CAPACITY.**

## PART SPECIFICATION FORM

<b>BENDPAK Number:</b>	5905670
<b>MRP Description:</b>	MAX CAP NRTL DANGER 15K
<b>Date:</b>	05/06/2013
<b>ECO :</b>	00593

### 1. Engineering Specification

**Application:**

LIFT CAPACITY STICKER FOR CE LIFTS

**Detailed Description:**



SIZE: 3.25" L x 4.5" W (82mm x 114mm)

### 2. Vendor Information

Approved Vendor	Vendor Part #	Contact #	Preferred Vendor
1)			

**! ATTENTION !**

**MAXIMUM LIFTING CAPACITY**

**15000 Lbs.**

**6804 Kg.**

## PART SPECIFICATION FORM


<b>BENDPAK Number:</b>	5905940
<b>MRP Description:</b>	PRODUCT DATA LABEL
<b>Date:</b>	05/06/2013
<b>ECO :</b>	00593

### 1. Engineering Specification

**Application:**

PRODUCT DATA LABEL

**Detailed Description:**



SANTA PAULA, CA USA  
 WWW.BENDPAK.COM

---

LIFT TYPE: SURFACE MOUNT CAP: MED/HVY DTY MFG. BPK SEE DATA PLATE FOR PRODUCT DETAILS  
 POWER: ELECTRIC/HYDRAULIC INSTALLATION - SEE OWNERS GUIDE OR CONTACT FACTORY

---

SAFETY INSTRUCTIONS: IF ATTACHMENTS, ACCESSORIES OR CONFIGURATION MODIFYING COMPONENTS THAT ARE LOCATED IN THE LOAD PATH, AFFECT OPERATION OF THE LIFT, AFFECT THE LIFT ELECTRICAL LISTING OR AFFECT INTENDED VEHICLE ACCOMMODATION ARE USED ON THIS LIFT AND, IF THEY ARE NOT CERTIFIED FOR USE ON THIS LIFT, THEN THE CERTIFICATION OF THIS LIFT SHALL BECOME NULL AND VOID. CONTACT THE PARTICIPANT FOR INFORMATION PERTAINING TO CERTIFIED ATTACHMENTS, ACCESSORIES OR CONFIGURATION MODIFYING COMPONENTS.

BENDPAK LIFTS ARE SUPPLIED WITH CONCRETE FASTENERS MEETING THE CRITERIA AS PRESCRIBED BY ASTM E488 - 96(2003). LIFT BUYERS ARE RESPONSIBLE FOR ANY SPECIAL REGIONAL STRUCTURAL AND/OR SEISMIC ANCHORING REQUIREMENTS SPECIFIED BY ANY OTHER AGENCIES AND/OR CODES SUCH AS THE UNIFORM BUILDING CODE (UBC) AND/OR INTERNATIONAL BUILDING CODE (IBC).

THE MANUFACTURE, USE, SALE OR IMPORT OF THIS PRODUCT MAY BE SUBJECT TO ONE OR MORE UNITED STATES PATENTS, OR PENDING APPLICATIONS, OWNED BY BENDPAK, INC.  
 DO NOT REMOVE      ENGINEERED BY BENDPAK INC. USA      MADE IN CHINA

SIZE: 2.3" L x 4.5" W (58mm x 114mm)

### 2. Vendor Information

Approved Vendor	Vendor Part #	Contact #	Preferred Vendor
1)			



SANTA PAULA, CA USA

WWW.BENDPAK.COM

PN 5905940

**LIFT TYPE: SURFACE MOUNT   CAP: MED/HVY DTY   MFG. BPK   SEE DATA PLATE FOR PRODUCT DETAILS**

**POWER: ELECTRIC/HYDRAULIC                      INSTALLATION - SEE OWNERS GUIDE OR CONTACT FACTORY**

SAFETY INSTRUCTIONS: IF ATTACHMENTS, ACCESSORIES OR CONFIGURATION MODIFYING COMPONENTS THAT ARE LOCATED IN THE LOAD PATH, AFFECT OPERATION OF THE LIFT, AFFECT THE LIFT ELECTRICAL LISTING OR AFFECT INTENDED VEHICLE ACCOMMODATION ARE USED ON THIS LIFT AND, IF THEY ARE NOT CERTIFIED FOR USE ON THIS LIFT, THEN THE CERTIFICATION OF THIS LIFT SHALL BECOME NULL AND VOID. CONTACT THE PARTICIPANT FOR INFORMATION PERTAINING TO CERTIFIED ATTACHMENTS, ACCESSORIES OR CONFIGURATION MODIFYING COMPONENTS.

BENDPAK LIFTS ARE SUPPLIED WITH CONCRETE FASTENERS MEETING THE CRITERIA AS PRESCRIBED BY ASTM E488 - 96(2003). LIFT BUYERS ARE RESPONSIBLE FOR ANY SPECIAL REGIONAL STRUCTURAL AND/OR SEISMIC ANCHORING REQUIREMENTS SPECIFIED BY ANY OTHER AGENCIES AND/OR CODES SUCH AS THE UNIFORM BUILDING CODE (UBC) AND/OR INTERNATIONAL BUILDING CODE (IBC).

THE MANUFACTURE, USE, SALE OR IMPORT OF THIS PRODUCT MAY BE SUBJECT TO ONE OR MORE UNITED STATES PATENTS, OR PENDING APPLICATIONS, OWNED BY BENDPAK, INC.

DO NOT REMOVE

ENGINEERED BY BENDPAK INC. USA

MADE IN CHINA

## PART SPECIFICATION FORM

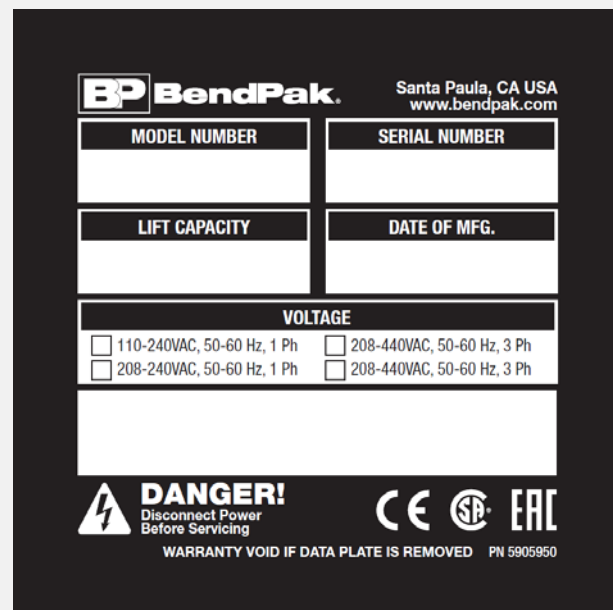
<b>BENDPAK Number:</b>	5905950
<b>MRP Description:</b>	2015_SERIAL_TAG-A-5905950
<b>Date:</b>	11/06/2015
<b>ECO :</b>	00738

### 1. Engineering Specification

**Application:**

DATA SERIAL TAG 2 POST CE

**Detailed Description:**



The image shows a template for a BendPak data plate. It includes the BendPak logo and company information (Santa Paula, CA USA, www.bendpak.com). The plate is divided into sections for MODEL NUMBER, SERIAL NUMBER, LIFT CAPACITY, and DATE OF MFG. There is a VOLTAGE section with checkboxes for 110-240VAC, 50-60 Hz, 1 Ph and 208-440VAC, 50-60 Hz, 3 Ph. At the bottom, there is a DANGER! warning to disconnect power before servicing, and a note that the warranty is void if the data plate is removed. The part number PN 5905950 is also listed.

SIZE: 3.48" L x 3.50" W  
 (88.4mm x 88.9mm)

### 2. Vendor Information (Or for Reference)

Approved Vendor	Vendor Part #	Contact #	Preferred Vendor
1)			
2)			
OR BENDPAK ENGINEERING APPROVED EQUIVALENT			



Santa Paula, CA USA  
www.bendpak.com

**MODEL NUMBER**

**SERIAL NUMBER**

**LIFT CAPACITY**

**DESCRIPTION**

**VOLTAGE**

☐ 110-240VAC, 50-60 Hz, 1 Ph

☐ 380-415VAC, 50-60 Hz, 3 Ph

☐ 208-240VAC, 50-60 Hz, 1 Ph

☐ 208-440VAC, 50-60 Hz, 3 Ph

**DATE OF MFG.**



**DANGER!**

Disconnect Power  
Before Servicing



**WARRANTY VOID IF DATA PLATE IS REMOVED PN 5905950**



***2016***  
***2-Post Lifts***  
***Colors & Graphics***

**XPR-9DS**

**XPR-10AS**

**XPR-9DTS**

**XPR-10AS-LP**

**XPR-9DS-LP**

**XPR-12FDL**

**XPR-10S**

**XPR-12CL**

**XPR-10S-LP**

**XPR-15CL**

**XPR-10TS**

**XPR-18CL**

**\* Does not include Models XPR-9, XPR-9TS & XPR-9-LP**

***1/7/16***

**CONFIDENTIAL INFORMATION.**

You may not disclose, print, copy or disseminate this information.  
Unauthorized use is a violation of federal criminal law.



# 2-Post Lifts Product Decal Positioning



## BPK Post Lift Decal.pdf

Material: Clear Adhesive PET

Size: 4.25"W x 38"H

Thickness: 4 Mil

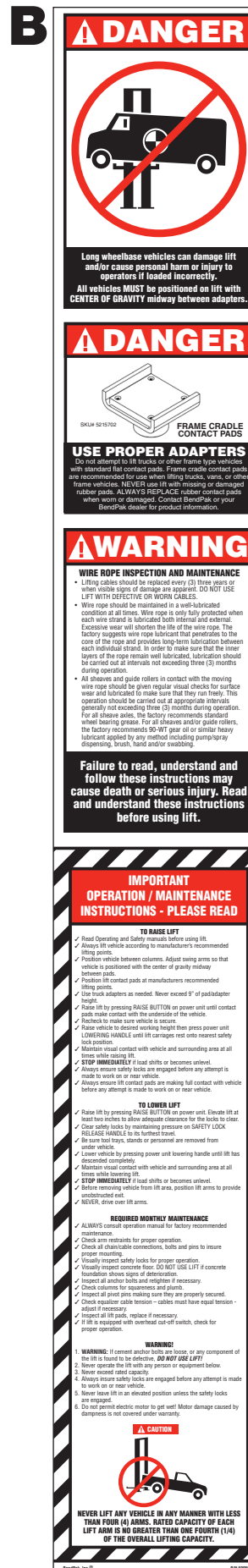
Finish: Polished

Ink: U.V. protected, Opaque White

Print Process: Silk Screen, 85 line-screen (Yellow color in file represents what should be clear PET material and SHOULD NOT print as Yellow ink. White area in file represents Opaque White ink.)

Lamination: Clear-gloss over-laminate for abrasion, chemical, and ultra violet protection

Total of 4



## 2-Post Safety Decal.pdf:

Size: 4"W x 28.75"H

Material: White Vinyl Pressure Sensitive Adhesive

Thickness: 4 Mil

Ink: U.V. protected CMYK 2/C Process

Finish: Polished

Print Process: Offset Lithography - 200 line-screen or 300 p.p.i. for digital

Lamination: Clear-gloss over-laminate for abrasion, chemical, and ultra violet protection

Place on BACK of Powerside Post

P/N 5905311

P/N 5905555

# 2-Post Lifts Product Decal Positioning

**\*C**

**\*Max. Cap. Danger.pdf:**  
 Size: 4"W x 5"H  
 Material: White Vinyl Pressure Sensitive Adhesive  
 Thickness: 4 Mil  
 Ink: U.V. protected CMYK 2/C Process  
 Finish: Polished  
 Print Process: Offset Lithography - 200 line-screen or 300 p.p.i. for digital  
 Lamination: Clear-gloss over-laminate for abrasion, chemical, and ultra violet protection

P/N 5905401 - Max Cap. Danger 7k  
 P/N 5905402 - Max Cap. Danger 9k  
 P/N 5905403 - Max Cap. Danger 10k  
 P/N 5905404 - Max Cap. Danger 12k  
 P/N 5905405 - Max Cap. Danger 15k  
 P/N 5905406 - Max Cap. Danger 18k

**\*D**

**\*Max. Cap. Attention.pdf:**  
 Size: 4.5"W x 3.25"H  
 Material: White Vinyl Pressure Sensitive Adhesive  
 Thickness: 4 Mil  
 Ink: U.V. protected CMYK 2/C Process  
 Finish: Polished  
 Print Process: Offset Lithography - 200 line-screen or 300 p.p.i. for digital  
 Lamination: Clear-gloss over-laminate for abrasion, chemical, and ultra violet protection

P/N 5905645 - Max Cap. Attention 7k  
 P/N 5905650 - Max Cap. Attention 9k  
 P/N 5905655 - Max Cap. Attention 10k  
 P/N 5905660 - Max Cap. Attention 12k  
 P/N 5905670 - Max Cap. Attention 15k  
 P/N 5905675 - Max Cap. Attention 18k

\*DEPENDS ON LIFT MODEL AND CAPACITY

**E**

**Product Data Label\_5905940-New.pdf:**  
 Size: 4.5"W x 2.3"H  
 Material: White Vinyl Pressure Sensitive Adhesive  
 Thickness: 4 Mil  
 Ink: U.V. protected CMYK 2/C Process  
 Finish: Polished  
 Print Process: Offset Lithography - 200 line-screen or 300 p.p.i. for digital  
 Lamination: Clear-gloss over-laminate for abrasion, chemical, and ultra violet protection

**P/N 5905940**

**F**

**ALI Blue**

**P/N 5905109  
(As a set E, F & G)**

**G**

**ALI Yellow**

**H**

**ALI Orange**

# 2-Post Lifts Product Decal Positioning

## PLEASE READ

Internal packing oil may cause the cylinders to bleed oil during start up. This is normal. To extend cylinder and seal life, raise the lift to full height at least once every day.

P/N 5905177

Place on **BOTH** Posts

LR-60\_Warning\_Instructions\_Label.pdf:

Size: 3"W x 1.75"H

Material: White Vinyl Pressure Sensitive Adhesive

Thickness: 4 Mil

Ink: U.V. protected CMYK 2/C Process

Finish: Polished

Print Process: Offset Lithography - 200 line-screen or 300 p.i. for digital

Lamination: Clear-gloss over-laminate for abrasion, chemical, and ultra violet protection



ALI-Gold-Label-5905326.pdf

P/N 5905326

**\*FOR ALI APPROVED LIFTS ONLY**

K

<b>BP BendPak</b> Santa Paula, CA USA www.bendpak.com	
MODEL NUMBER	
SERIAL NUMBER	
LIFT CAPACITY	DESCRIPTION
VOLTAGE	
<input type="checkbox"/> 110-240VAC, 50-60 Hz, 1 Ph	<input type="checkbox"/> 380-415VAC, 50-60 Hz, 3 Ph
<input type="checkbox"/> 208-240VAC, 50-60 Hz, 1 Ph	<input type="checkbox"/> 208-440VAC, 50-60 Hz, 3 Ph
DATE OF MFG.	
<b>DANGER!</b> Disconnect Power Before Servicing WARRANTY VOID IF DATA PLATE IS REMOVED PN 5905950	
CE SP EAC	

2015\_Serial\_Tag-A-5905950.pdf:

Size: 3"W x 3"H

Material: 2 Mil. Gloss polyester thermal transfer label with a high performance permanent acrylic adhesive.

Ink: 1 Color-Black

**\*FOR CE APPROVED LIFTS ONLY**

P/N 5905950

L

<b>BP BendPak</b> Santa Paula, CA USA www.bendpak.com	
MODEL NUMBER	
SERIAL NUMBER	
LIFT CAPACITY	DESCRIPTION
VOLTAGE	
<input type="checkbox"/> 110-240VAC, 50-60 Hz, 1 Ph	<input type="checkbox"/> 380-415VAC, 50-60 Hz, 3 Ph
<input type="checkbox"/> 208-240VAC, 50-60 Hz, 1 Ph	<input type="checkbox"/> 208-440VAC, 50-60 Hz, 3 Ph
DATE OF MFG.	
<b>DANGER!</b> Disconnect Power Before Servicing WARRANTY VOID IF DATA PLATE IS REMOVED PN 5905951	
SP EAC	

2015\_Serial\_Tag-B-5905951.pdf:

Size: 3"W x 3"H

Material: 2 Mil. Gloss polyester thermal transfer label with a high performance permanent acrylic adhesive.

Ink: 1 Color-Black

**\*FOR NON-CE APPROVED LIFTS ONLY**

P/N 5905951

# 2-Post Lifts Product Decal Positioning

**Depends if  
CE-APPROVED  
or NON-CE**

**K or  
L**

Place labels on  
back side next  
to power unit.

**J**

**D**

**E**

**F**

**G**

**H**

**Powerside Post**

**A**

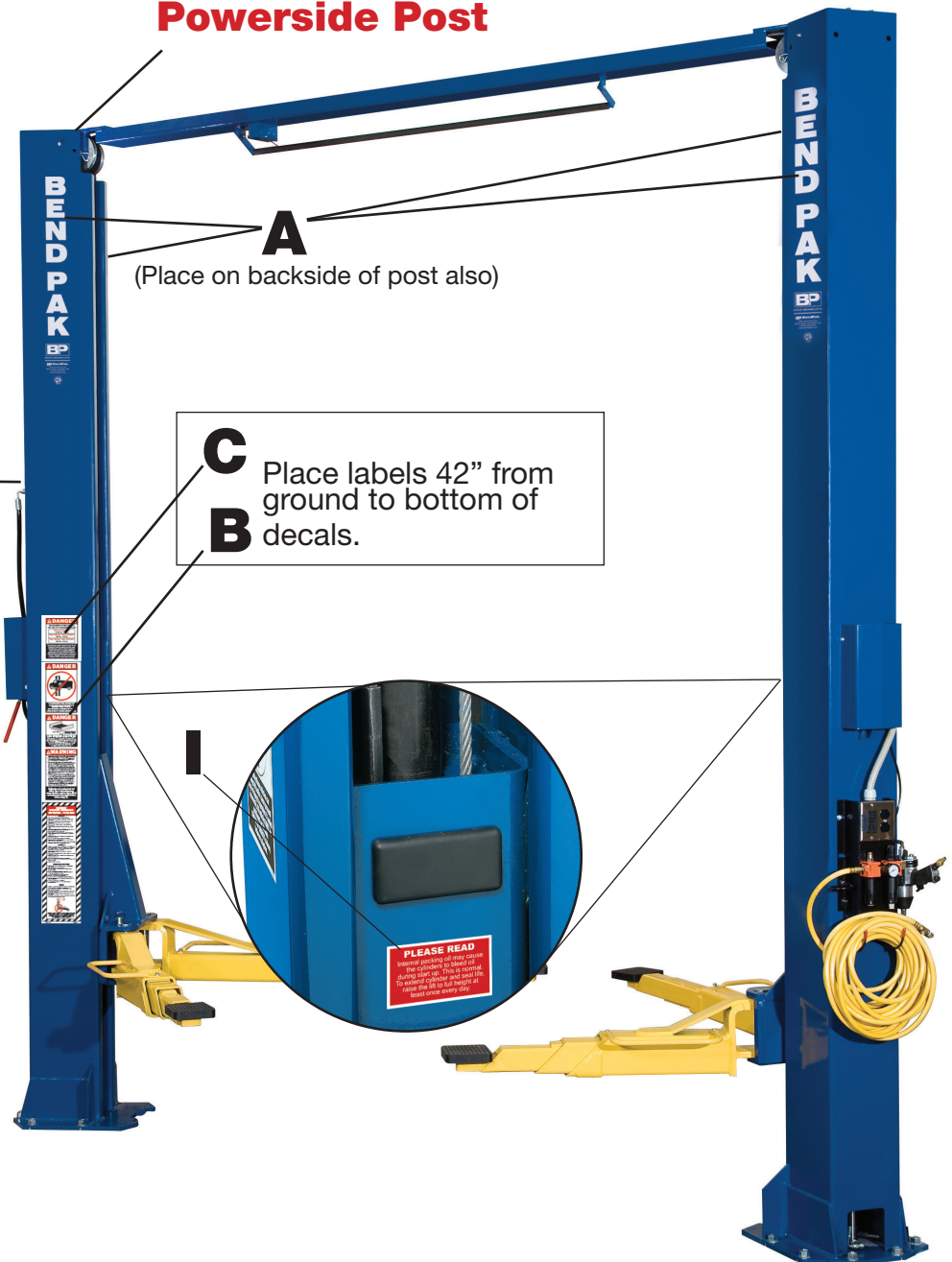
(Place on backside of post also)

**C**

Place labels 42" from  
ground to bottom of  
decals.

**B**

**I**





# 2 Post Lifts Packaging

<b>BP BendPak.</b> Santa Paula, CA USA www.bendpak.com	
MODEL NUMBER	SERIAL NUMBER
PN 5905285	

**Serial\_Tag\_New-2015\_Peel\_Off-5905285.jpg:**

Size: 3"W x 3"H

Material:Material: 2 Mil. Matte Silver Polyester  
(Flex-PSE)

Print using thermal transfer printer with resin ribbon

Ink: 1 Color-Black

<b>PEEL OFF INVENTORY LABEL</b>	
MODEL NUMBER	SERIAL NUMBER
PN 5905285	
<b>Do not remove back sheet of this portion to prevent from sticking completely as shown in image.</b>	

