

Parts Diagrams

REV	DESCRIPTION	REVISION	DATE	EDITED BY	ECO #
T	UPDATED BOM REVISION		09/27/2016	TM	00780
V	UPDATED BOM REVISIONS		02/14/2017	TM	00810
W	ADDED GRANDPRIX DECALS/UPDATED BOM REVISIONS		04/19/2017	TS	00819

ITEM NO	PART NUMBER	DESCRIPTION	QTY	REV
1	5243366	GP-7 LIFT SUPERSTRUCTURE	1	L
2	5250080	GP-7 PARTS BOX	1	N
3	5215557	GP-7, RTL-8000 90° MEDIUM ARM WELDMENT R.H.	1	M
4	5215554	GP-7, RTL-8000 90° MEDIUM ARM ASSEMBLY L.H.	1	M
5	5215555	GP-7/RTL-8000 LONG ARM ASSEMBLY	2	L
6	5215599	GP-7 POST HYDRAULIC RETURN LINE ASSEMBLY	1	B
7	5215600	GP-7 POST HYDRAULIC LINE ASSEMBLY	1	B
8	5765129	GP-7 TRIP STOP TUBE	1	A
9	5300242	GP-7 TRIP STOP BAR CUSHION	1	A
10	5905109	WARNING: AVOID TOI	1	A
11	5905401	MAX CAP DANGER 7K	1	A
12	5905465	MANUFACTURER LABEL	1	A
13	5905645	MAX CAP NRTL DANGER 7K	1	A
14	5905940	PRODUCT DATA LABEL	1	A
15	5905951	5905951-2015 Serial Tag-B	1	A
16	5906014	GrandPrix 2-Post Safety Decal	2	A
17	5906007	GrandPrix Logo Decal	1	A
18	5906006	GrandPrix Vertical Branding Decal	1	A

DO NOT SCALE DRAWING

DRAWN TM 06/19/2012

CHECKED DB 4/28/2017

DATE

06/19/2012

4/28/2017

NAME

TM

DB

BP BendPak.  
1445 LEMONWOOD DR.  
SANTA PAULA, CA 93060

GP-7 SERIES  
PRODUCTION LIFT VER A

SIZE DWG. NO. A 5260171

REV W

SCALE: 1:30

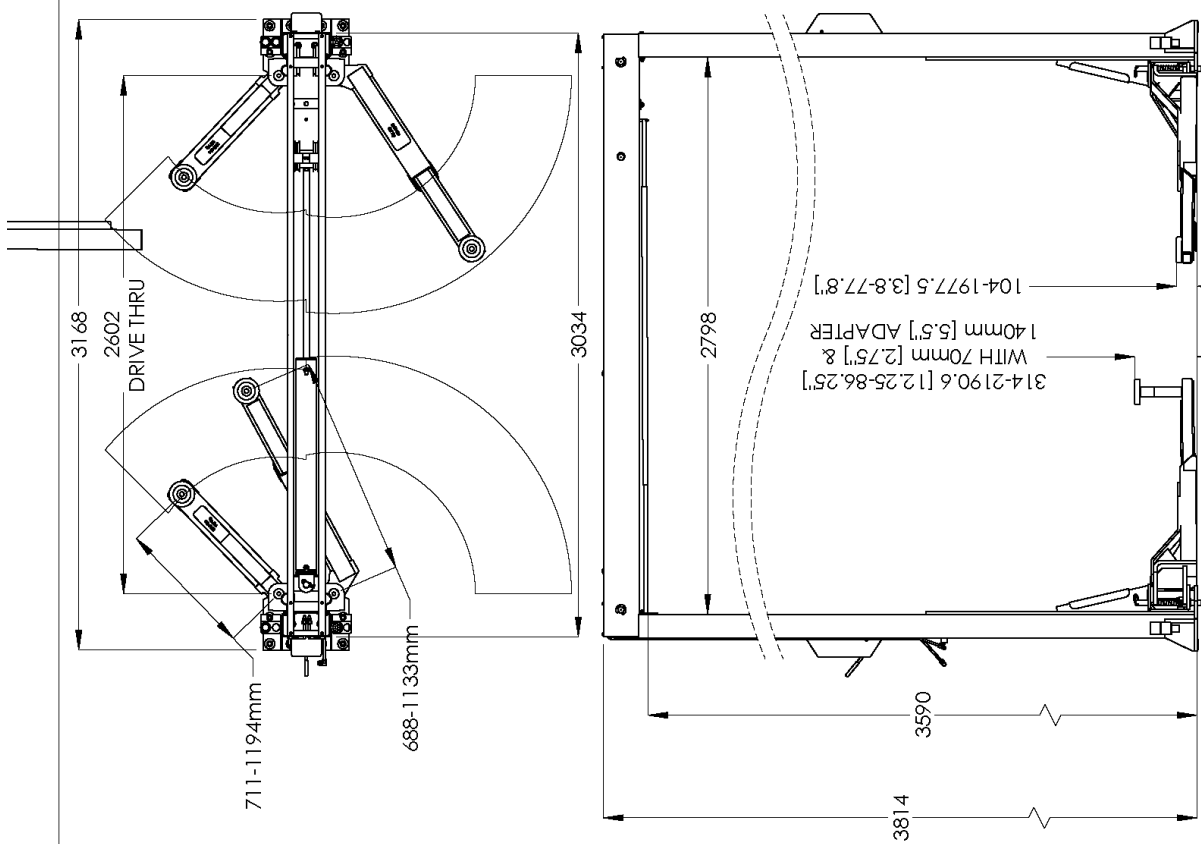
SHEET 1 OF 2

THIRD ANGLE PROJECTION

PROPERTY AND CONFIDENTIAL  
THE INFORMATION CONTAINED HEREIN IS THE SOLE PROPERTY OF BENDPAK INC. ANY REPRODUCTION OR TRANSMISSION OF THIS INFORMATION WITHOUT THE WRITTEN PERMISSION OF BENDPAK INC. IS PROHIBITED.

SMILEY FACE

NOTE: UNLESS OTHERWISE SPECIFIED:  
1. SEE SHIPPING INSTRUCTIONS FOR FINAL PACKAGING  
2. ALL LABELS TO BE APPLIED TO POSTS AFTER PAINTING.  
SEE ATTACHED LABEL PLACEMENT SHEET



**BendPak.**  
1645 LEMONWOOD DR.  
SANTA PAULA, CA 93060

TITLE:

GP-7 SERIES  
PRODUCTION LIFT VER A

SIZE DWG. NO.

A 5260171

REV

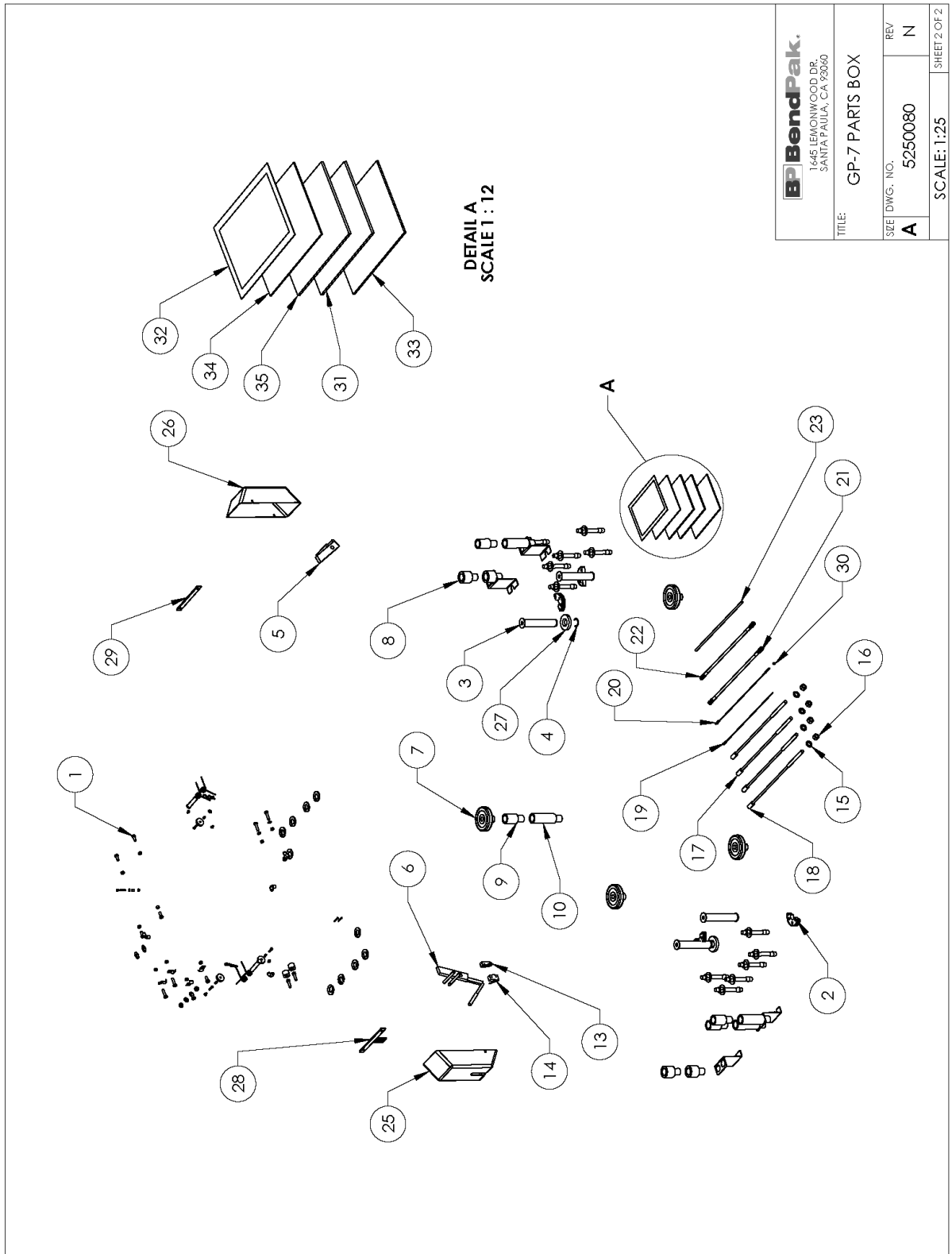
W

SCALE: 1:30

SHEET 2 OF 2







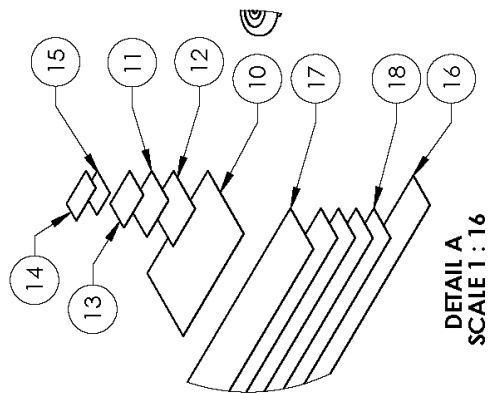
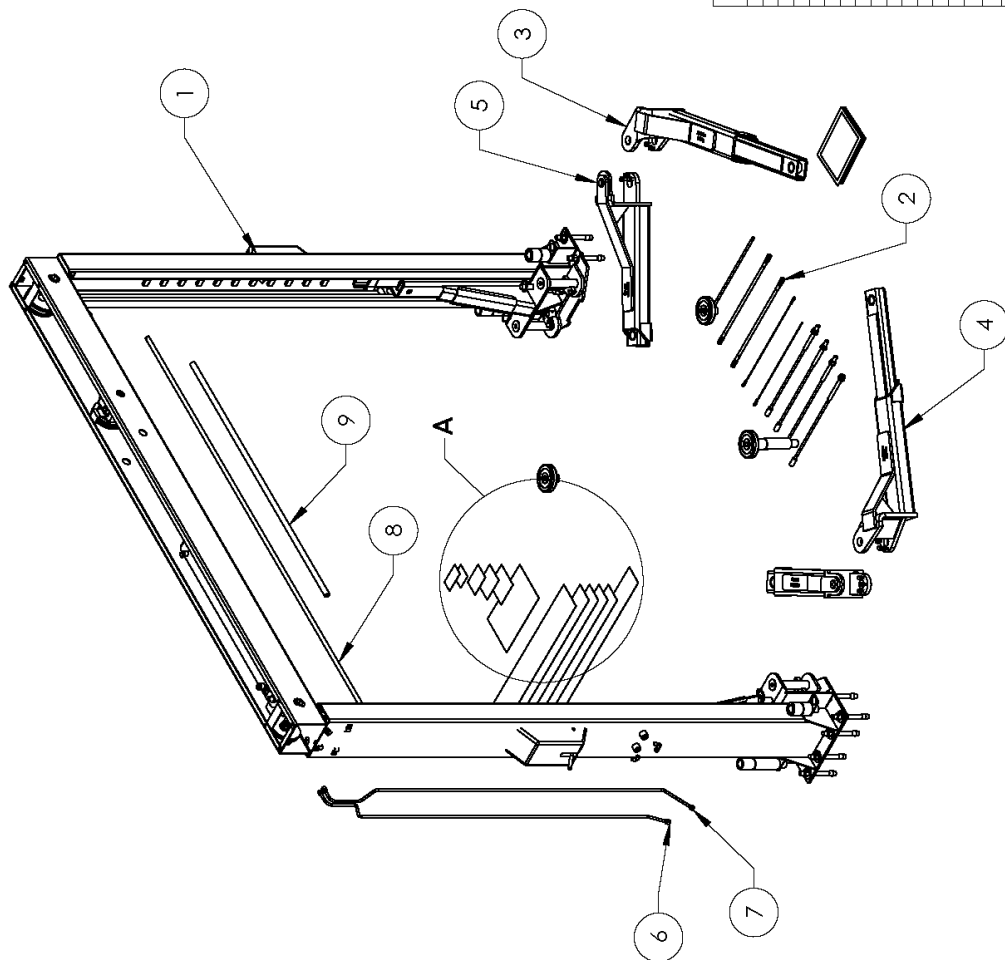
**BPI BendPak.**

1445 LEMONWOOD DR.  
SANTA PAULA, CA 92060

TITLE: GP-7 PARTS BOX

SIZE	DWG. NO.	REV
A	5250080	N

SCALE: 1:25 SHEET 2 OF 2



ITEM NO	PART NUMBER	DESCRIPTION	QTY	REV
1	5241028	GP-7 LC LIFT SUPERSTRUCTURE	1	A
2	5240378	GP-7 LC PARS BOY	1	D
3	5215552	GP-7 RTI-8000 90° MEDIUM ARM WELDMENT R.H.	1	N
4	5215554	GP-7 RTI-8000 90° MEDIUM ARM ASSEMBLY L.H.	1	N
5	5215555	GP-7 RTI-8000 LONG ARM ASSEMBLY	2	M
6	5215730	GP-7 LC POST HYDRAULIC RETURN LINE ASSEMBLY	2	A
7	5215731	GP-7 LC POST HYDRAULIC LINE ASSEMBLY	2	A
8	5165129	GP-7 TRIP STOP TUBE	1	A
9	5300742	GP-7 TRIP STOP BAR CUSHION	1300mm	A
10	5903109	WARNING ALLOW TO	1	--
11	5903401	MAX CAP DANGER 7K	1	--
12	5903465	MANUFACTURER LABEL	1	--
13	5903645	MAX CAP NRIL DANGER 7K	1	--
14	5903940	PRODUCT DATA LABEL	1	--
15	5903951	5903951-2015 Serial Tag-B	1	--
16	5906014	Grandprix 2-Post Safety Decal	1	--
17	5906007	Grandprix Logo Decal	1	--
18	5906006	Grandprix Vertical Branding Decal	4	--

**BP BendPak.**

16445 LEMONWOOD DR.  
SANTA PAULA, CA 93060

TITLE: GP-7LC PRODUCTION  
LIFT VER A

SIZE DWG. NO.

A 5261005

REV

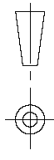
D

SHEET 1 OF 2

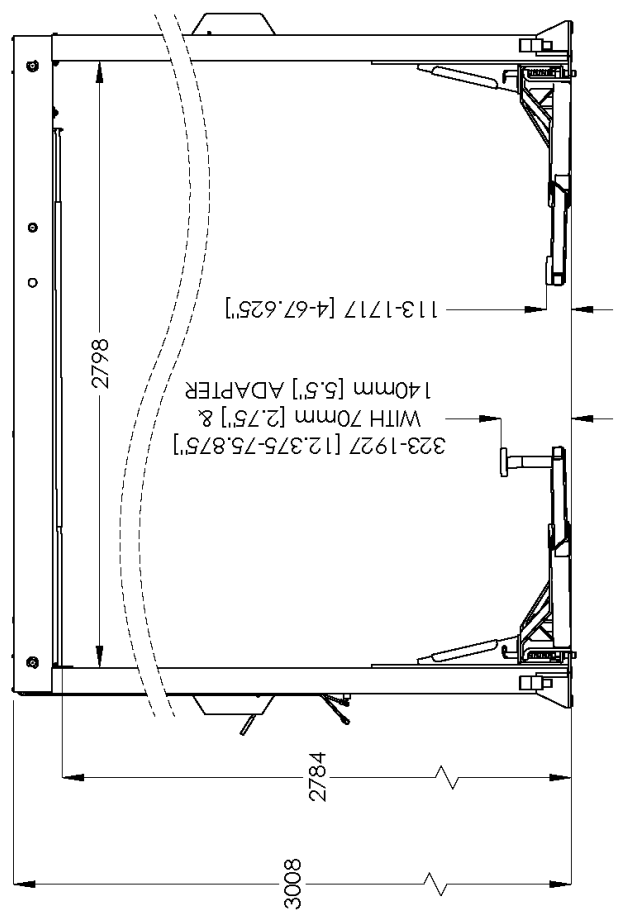
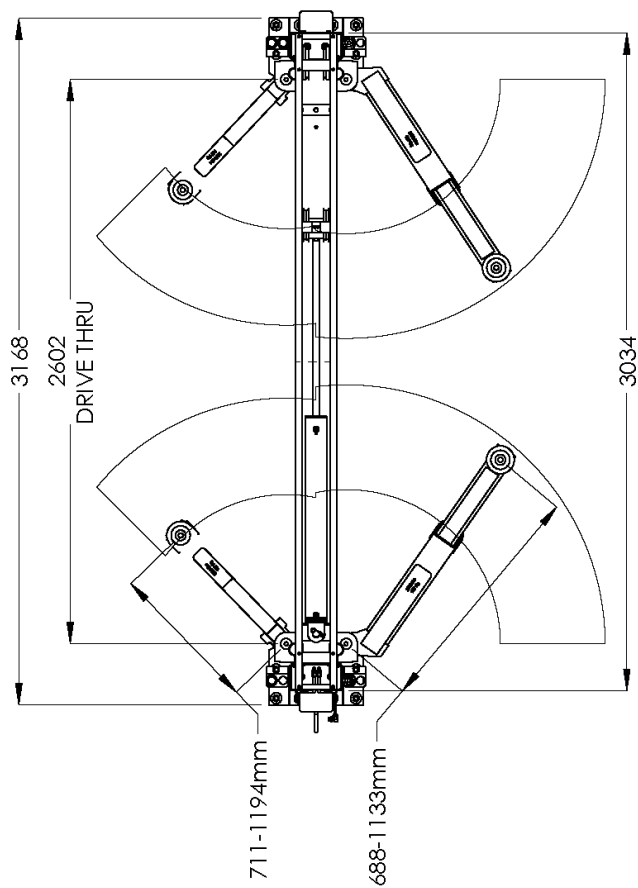


DIMENSIONS ARE IN MM

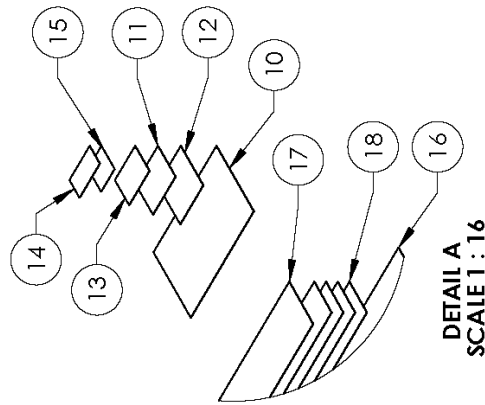
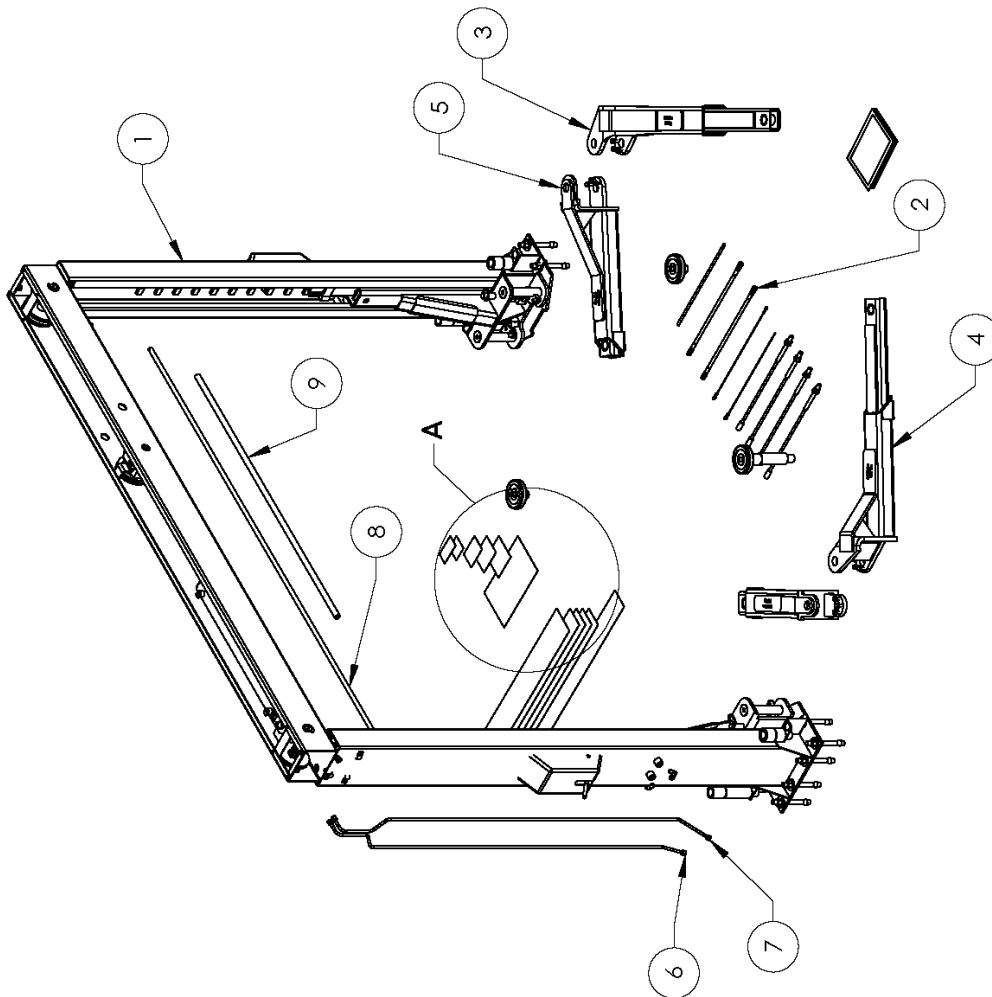
THIRD ANGLE PROJECTION



PROPRIETARY AND CONFIDENTIAL  
THE INFORMATION CONTAINED IN THIS DRAWING IS  
THE PROPERTY OF BENDPAK INC. AND IS NOT TO BE  
REPRODUCED OR USED IN ANY MANNER WITHOUT  
THE WRITTEN PERMISSION OF BENDPAK INC. IS  
FORWARDED.



<b>BP BendPak.</b> 1645 LEMONWOOD DR. SANTA PAULA, CA 93060	
<b>TITLE:</b> GP-7LC PRODUCTION LIFT VER A	
<b>SIZE</b> DWG. NO.	<b>REV</b>
<b>A</b> 5261005	<b>D</b>
<b>SCALE:</b> 1:30	
<b>SHEET 2 OF 2</b>	



ITEM NO	PART NUMBER	DESCRIPTION	QTY	REV
1	5243421	GP-7LCS LIFT SUPERSTRUCTURE	1	A
2	5250374	GP-7LCS PARTS BOX	1	D
3	5215357	GP-7, RTL-8000 90° MEDIUM ARM WELDMENT R.H.	1	N
4	5215354	GP-7, RTL-8000 90° MEDIUM ARM WELDMENT L.H.	1	N
5	5215355	GP-7/RTL-8000 LONG ARM ASSEMBLY	2	M
6	5215734	GP-7LCS POST HYDRAULIC RETURN LINE ASSEMBLY	1	A
7	5215735	GP-7LCS POST HYDRAULIC LINE ASSEMBLY	1	A
8	5745129	GP-7 TRIP STOP TUBE	1	A
9	5300242	GP-7 TRIP STOP BAR CUSHION	1500mm	--
10	5903109	WARNING ALU/ALU 101	1	--
11	5903401	MAX CAP DANGER 7K	1	--
12	5903465	MANUFACTURER LABEL	1	--
13	5903645	MAX CAP NR/DANGER 7K	1	--
14	5905940	PRODUCT DATA LABEL	1	--
15	5905951	5905951-2015 Serial Tag-B	1	--
16	5906014	Grandprix 2-Post Safety Decal	1	--
17	5906007	Grandprix Logo Decal	1	--
18	5906006	Grandprix Vertical Branding Decal	4	--

**BendPak.**  
1645 LEMONWOOD DR.  
SANTA PAULA, CA 93060

DO NOT SCALE DRAWING

DRAWN TM 06/14/2017

CHECKED

NAME DATE

THIRD ANGLE PROJECTION

SMILEY FACE

TITLE: GP-7LCS PRODUCTION LIFT VER A

SIZE DWG. NO. 5261006

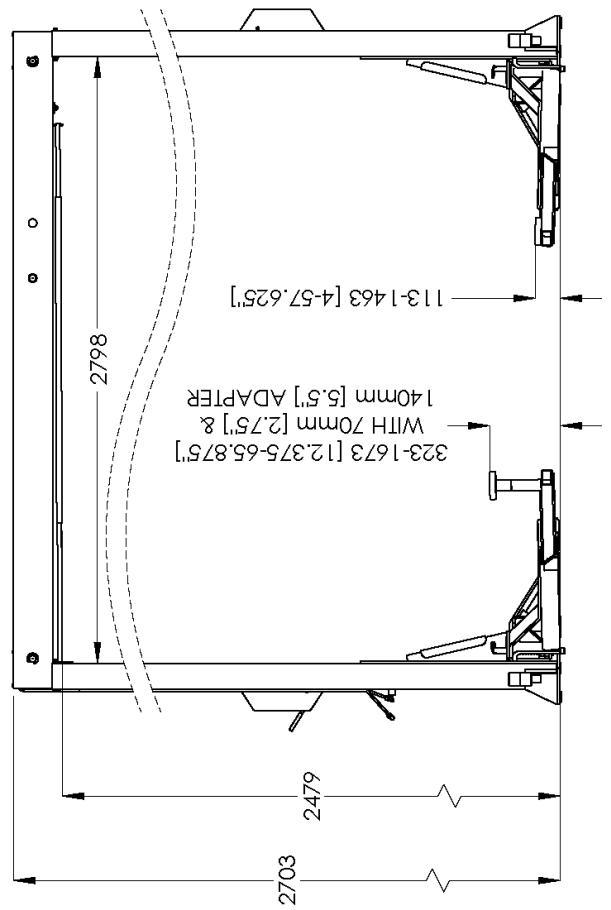
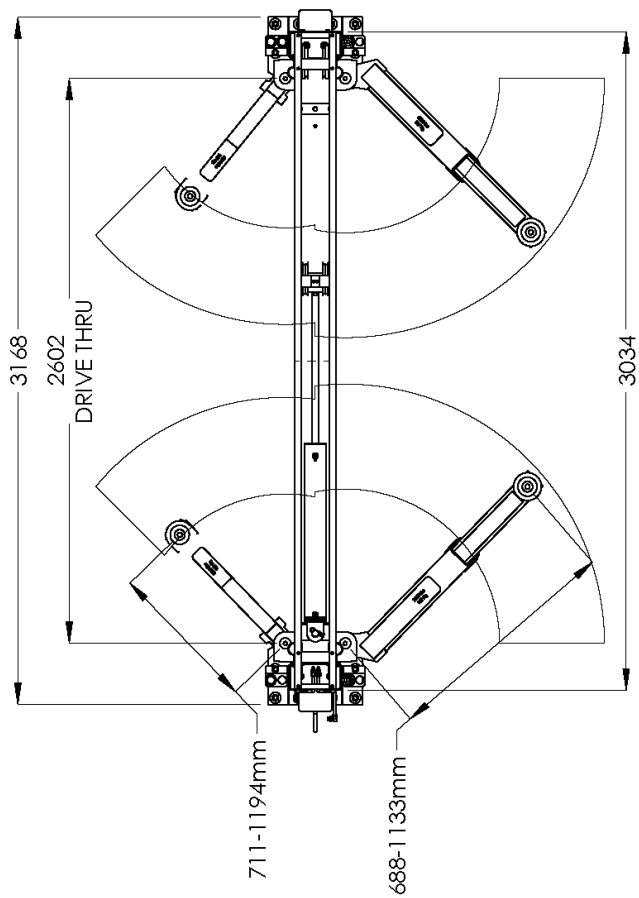
REV D

SCALE: 1:30

SHEET 1 OF 2

PROPRIETARY AND CONFIDENTIAL

THE INFORMATION CONTAINED HEREIN IS THE SOLE PROPERTY OF BENDPAK INC. ANY REPRODUCTION OR TRANSMISSION OF THIS INFORMATION WITHOUT THE WRITTEN PERMISSION OF BENDPAK INC. IS PROHIBITED.



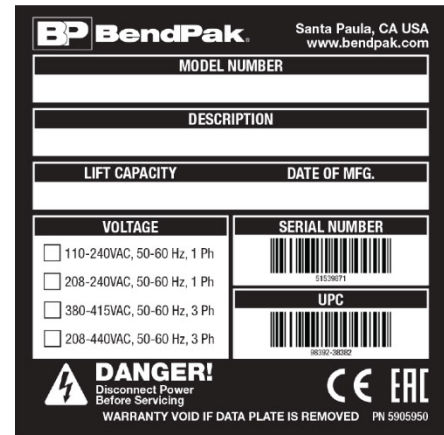
<b>BP BendPak.</b> 1645 LEMONWOOD DR. SANTA PAULA, CA 93060	
<b>TITLE:</b> GP-7LCS PRODUCTION LIFT VER A	
<b>SIZE</b> DWG. NO.	<b>REV</b>
<b>A</b> 5261006	<b>D</b>
<b>SCALE:</b> 1:30	
SHEET 2 OF 2	



G



H



I



J

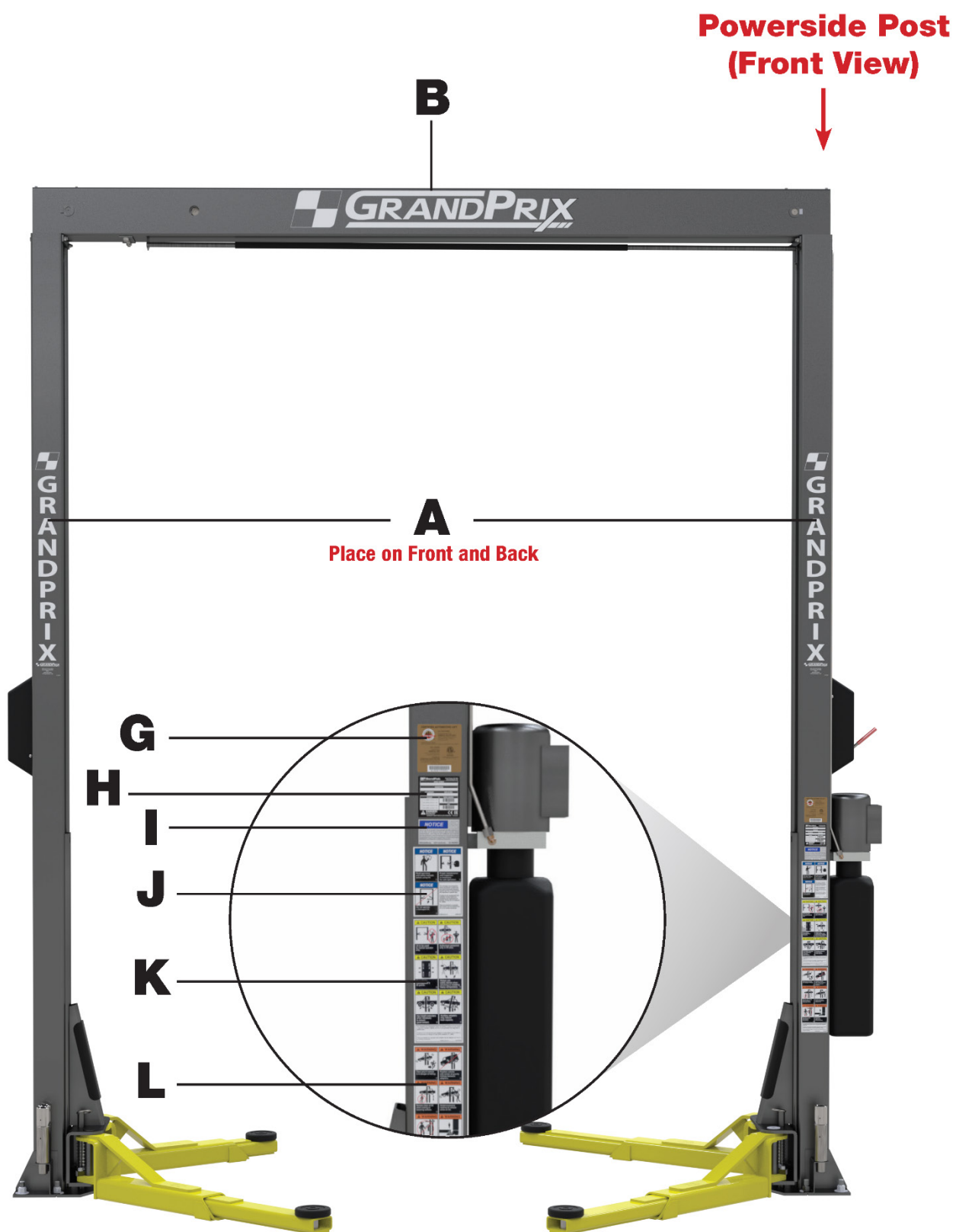


K

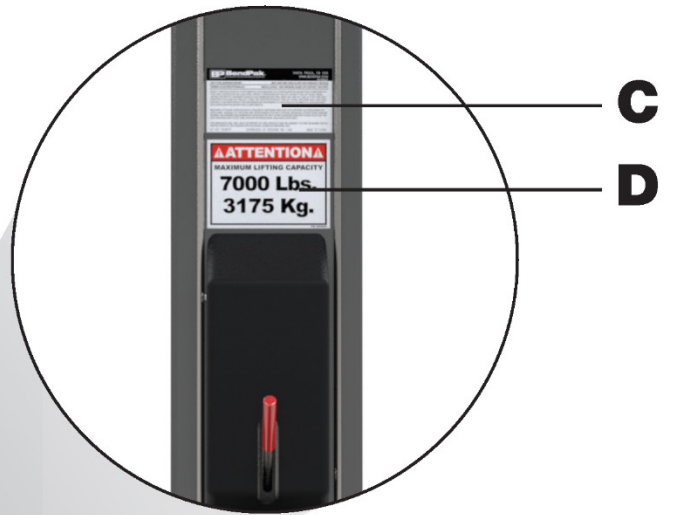


L





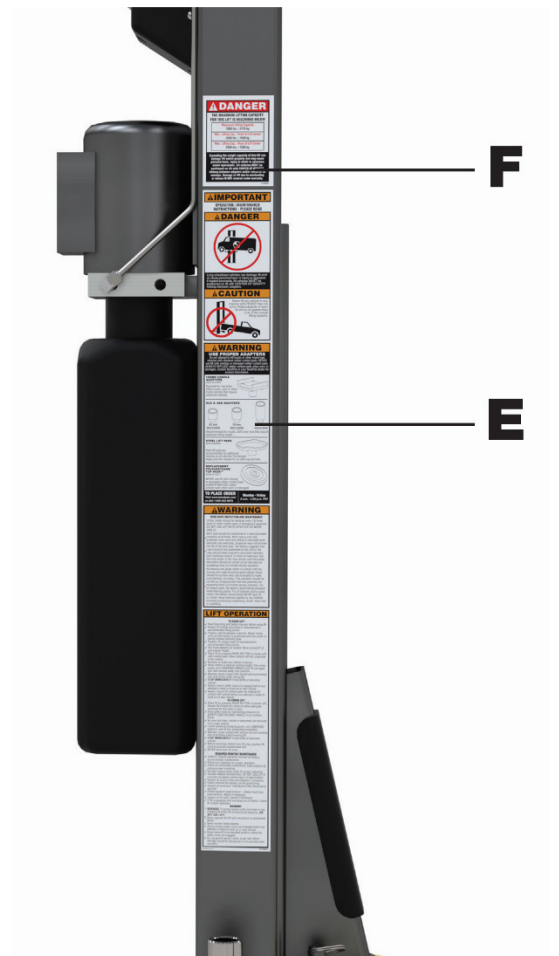
## Powerside Post (Side View)



**C**

**D**

## Powerside Post (Back View)



**F**

**E**