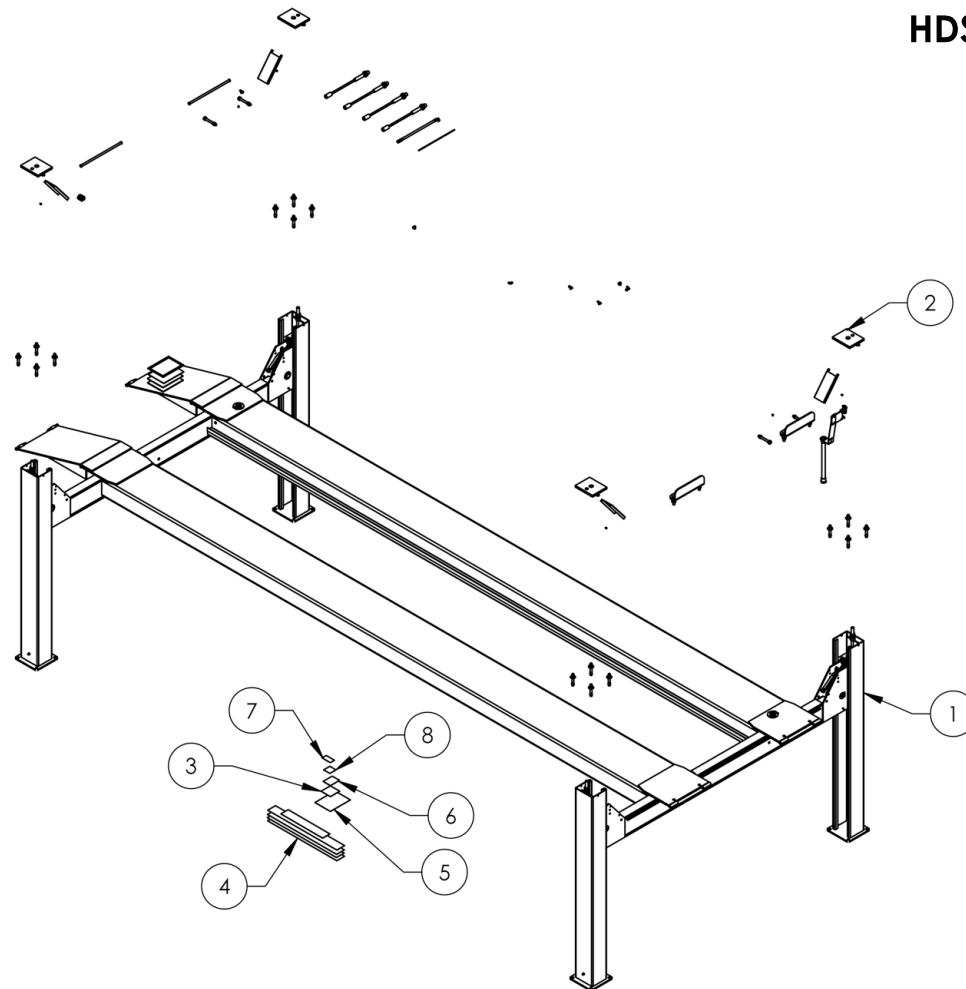


# Service Manual

## Service Parts & Diagrams

# HDS-27X

BendPak SKU 5260069  
HDS-27X Four-Post Car Lift  
Version C  
02/25/2016



This guide is a troubleshooting reference used for maintaining and servicing your BendPak product. It provides comprehensive information on identifying serviceable parts and components and assists in troubleshooting problems and performing assembly/disassembly procedures.



### BendPak, Inc. Corporate Office

1645 Lemonwood Drive  
Santa Paula, CA 93060 USA  
Toll Free US/Canada: 1-800-253-2363  
Fax: 1-805-933-9160  
info@bendpak.com

### Customer Service Desk / Warranty

Customer Service Representatives  
Office Tel: 1-805-933-9970  
Toll Free US/Canada: 1-800-253-2363  
Fax: 1-805-933-9160  
customerservice@bendpak.com

### Parts Orders

Customer Service Representatives  
Office Tel: 1-805-933-9970  
Toll Free US/Canada: 1-800-253-2363  
Fax: 1-805-933-9160  
parts@bendpak.com

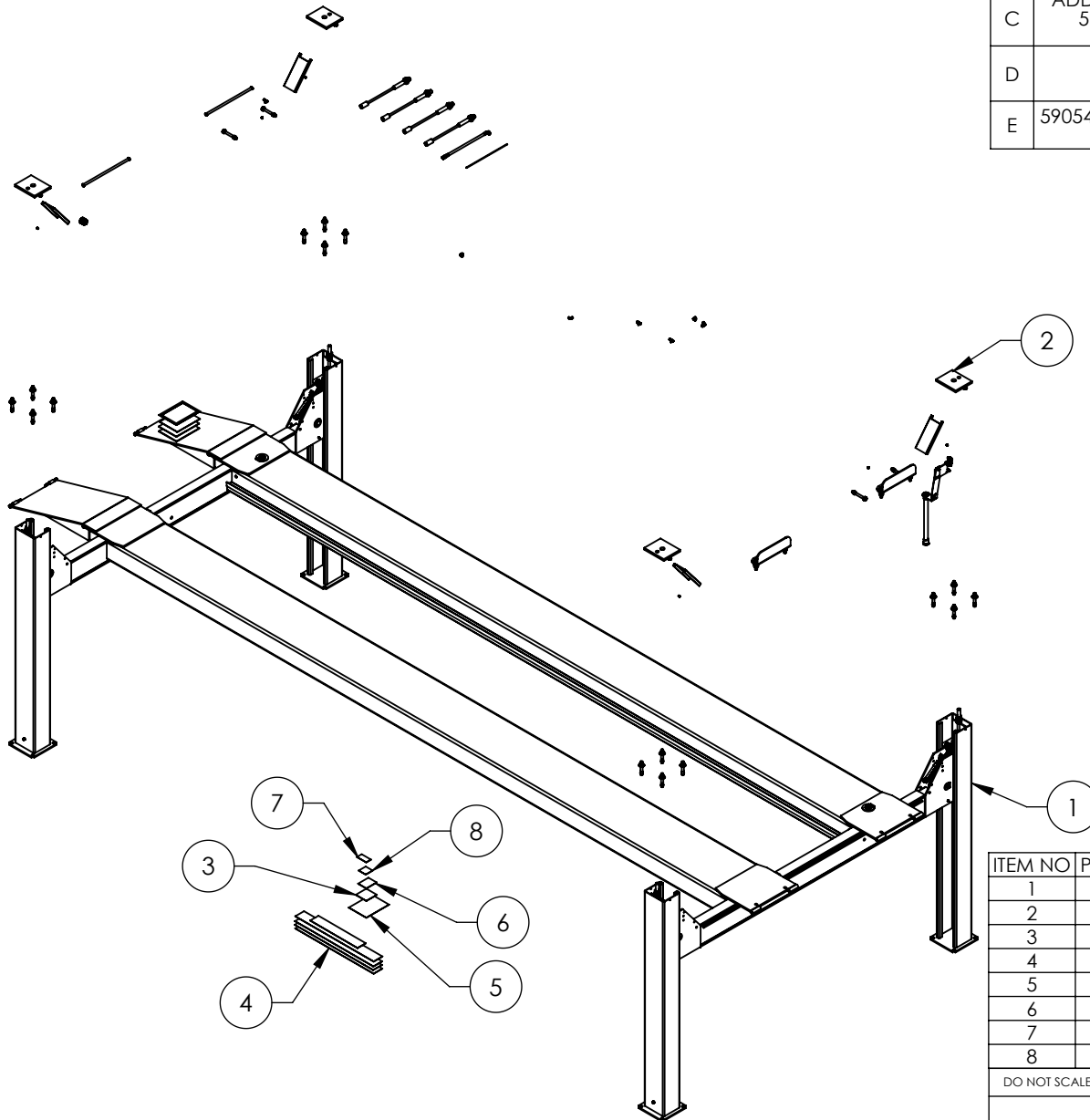
### Domestic Sales & Service

USA Sales Representatives  
Office Tel: 1-805-933-9970  
Toll Free US/Canada: 1-800-253-2363  
Fax: 1-805-933-9160  
sales@bendpak.com


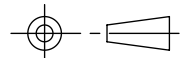

### International Sales & Service

Office Tel: 1-805-933-9970  
Exports Department: 1-805-933-9970 Ext. 192  
Toll Free US/Canada: 1-800-253-2363  
Fax: 1-805-933-9160  
bpkexports@bendpak.com

REVISION		DATE	EDITED BY	ECO#
REV	DESCRIPTION			
C	ADDED 5905103, 5905200, 5905407, 5905465, 5905940, AND 5930605, UPDATED BOM	08/04/2015	TM	00683
D	REPLACED 5930605 WITH 5905953, REPLACED 5905407 WITH 5905402, UPDATED BOM REVISIONS	12/10/2015	JM	00724
E	5905402 REPLACED BY 5905407, UPDATED BOM REVISIONS	12/28/2015	JM	00741



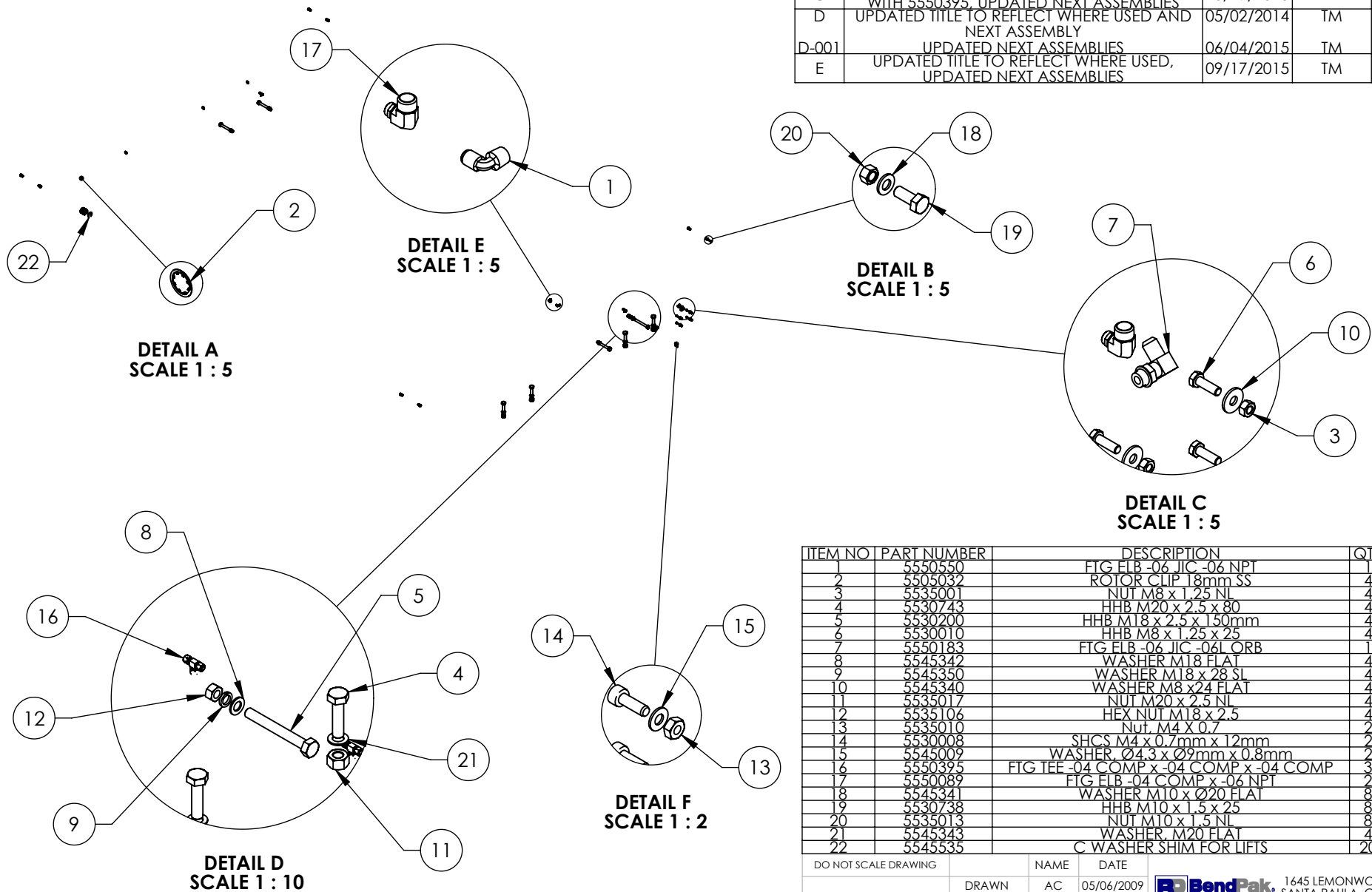
ITEM NO	PART NUMBER	DESCRIPTION	QTY	REV
1	5245011	HDS-27X LIFT SUPERSTRUCTURE	1	E
2	5250175	PARTS BOX HDS-27X	1	D
3	5905465	MANUFACTURER LABEL	1	--
4	5905200	4 POST DECAL KIT, LESS ALI	1	B
5	5905103	WARNING ALI/WL 200	1	--
6	5905407	MAX CAP DANGER 27K	1	--
7	5905940	PRODUCT DATA LABEL	1	--
8	5905953	SERIAL NUMBER INTERIOR TAG PLATE	1	--

DO NOT SCALE DRAWING		NAME	DATE	<div> <b>BendPak.</b> <small>MOVING AUTOMATIC SERVICE SOLUTIONS</small></div> <div>1645 LEMONWOOD DR. SANTA PAULA, CA 93060</div>			
DRAWN		TM	09/22/2014				
CHECKED				TITLE: HDS-27X PRODUCTION LIFT VER C (CE CERT)			
THIRD ANGLE PROJECTION							
<div>DIMENSIONS ARE IN MM</div> <div></div>		<div>PROPRIETARY AND CONFIDENTIAL</div> <div>THE INFORMATION CONTAINED IN THIS DRAWING IS THE SOLE PROPERTY OF <b>BENDPAK INC.</b> ANY REPRODUCTION IN PART OR AS A WHOLE WITHOUT THE WRITTEN PERMISSION OF <b>BENDPAK INC.</b> IS PROHIBITED.</div>		SIZE	DWG. NO.	REV	
				A	5260069	E	
SCALE: 1:60				SHEET 1 OF 2			

**NOTE: UNLESS OTHERWISE SPECIFIED.**

1. SEE SHIPPING INSTRUCTIONS FOR FINAL PACKAGING
2. ALL LABELS TO BE APPLIED TO POSTS AFTER PAINTING.
3. SEE ATTACHED LABEL PLACEMENT SHEET

REVISION		DATE	EDITED BY	ECO#
REV	DESCRIPTION			
C	REPLACED 5550004 WITH 5550089, 5550489 WITH 5550395, UPDATED NEXT ASSEMBLIES	10/29/2013	TM	00593
D	UPDATED TITLE TO REFLECT WHERE USED AND NEXT ASSEMBLY	05/02/2014	TM	00646
D-001	UPDATED NEXT ASSEMBLIES	06/04/2015	TM	00683
E	UPDATED TITLE TO REFLECT WHERE USED, UPDATED NEXT ASSEMBLIES	09/17/2015	TM	00724



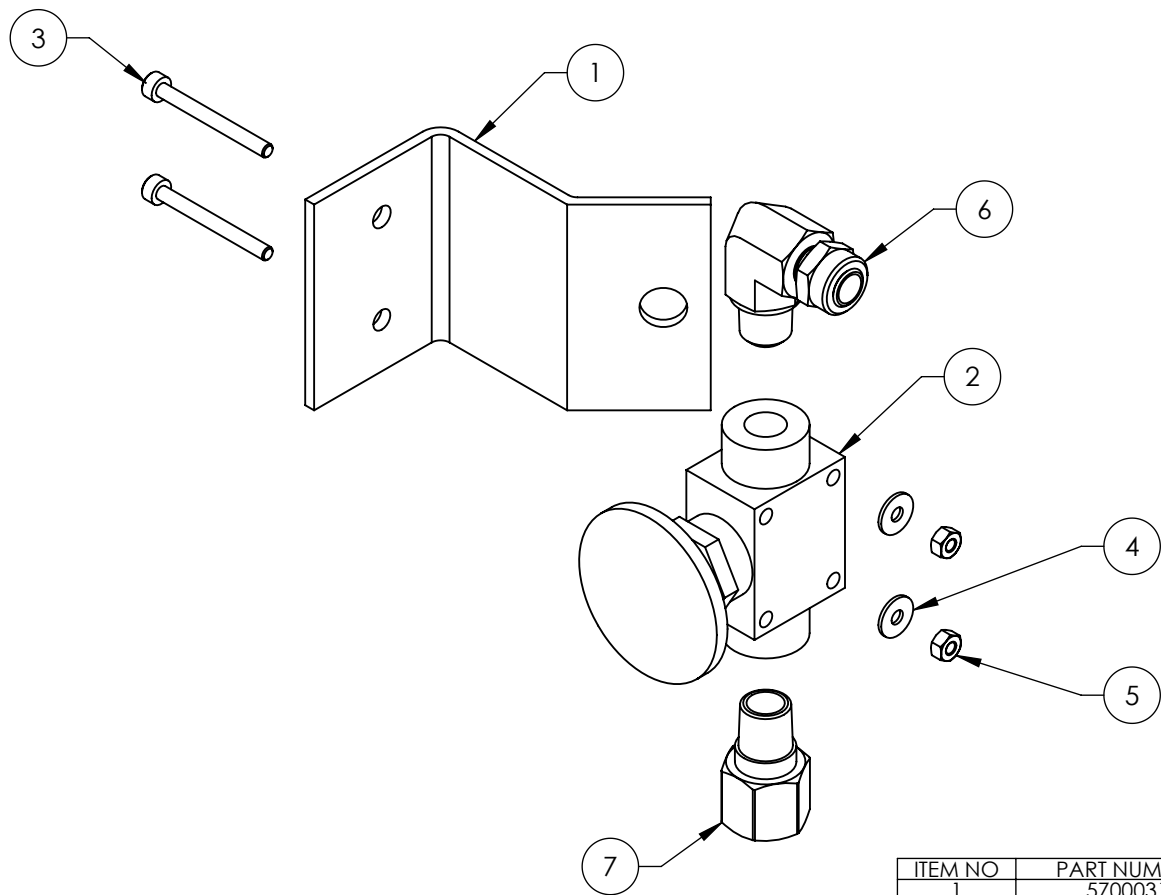
ITEM NO	PART NUMBER	DESCRIPTION	QTY	REV
1	5550550	FTG FLB -06 JIC -06 NPT	1	--
2	5550302	ROTOR CLIP 18mm SS	4	--
3	5535001	NUT M8 x 1.25 NL	4	--
4	5530743	HHB M20 x 2.5 x 80	4	--
5	5530200	HHB M18 x 2.5 x 150mm	4	--
6	5530010	HHB M8 x 1.25 x 25	4	--
7	5550183	FTG FLB -06 JIC -06L ORB	1	--
8	5545342	WASHER M18 FLAT	4	--
9	5545350	WASHER M18 x 28 SL	4	--
10	5545340	WASHER M8 x 24 FLAT	4	--
11	5535017	NUT M20 x 2.5 NL	4	--
12	5535106	HEX NUT M18 x 2.5	4	--
13	5535010	Nut, M4 X 0.7	2	--
14	5530008	SHCS M4 x 0.7mm x 12mm	2	--
15	5545009	WASHER, Ø4.3 x Ø9mm x 0.8mm	2	--
16	5550395	FTG TEE -04 COMP x -04 COMP x -04 COMP	3	--
17	5550089	FTG FLB -04 COMP x -06 NPT	2	--
18	5545341	WASHER M10 x Ø20 FLAT	8	--
19	5530738	HHB M10 x 1.5 x 25	8	--
20	5535013	NUT M10 x 1.5 NL	8	--
21	5545343	WASHER, M20 FLAT	4	--
22	5545535	C WASHER SHIM FOR LIFTS	20	--

DO NOT SCALE DRAWING		NAME	DATE
DRAWN		AC	05/06/2009
CHECKED			
DIMENSIONS ARE IN MM		THIRD ANGLE PROJECTION	
		PROPRIETARY AND CONFIDENTIAL THE INFORMATION CONTAINED IN THIS DRAWING IS THE SOLE PROPERTY OF BENDPAK INC. ANY REPRODUCTION IN PART OR AS A WHOLE WITHOUT THE WRITTEN PERMISSION OF BENDPAK INC. IS PROHIBITED.	
TITLE: HDS-27/35 SERIES PARTS BAG		SIZE DWG. NO. <b>A</b> 5174600	REV E
SCALE: 1:50		SHEET 1 OF 1	

**NOTE: UNLESS OTHERWISE SPECIFIED.**  
 1. SEE SHIPPING INSTRUCTIONS FOR FINAL PACKAGING

NEXT ASSEMBLY
5250159
5250172
5250175
5250177
5250179
5250364

REVISION					
REV	DESCRIPTION	DATE	EDITED BY	ECO#	
D	UPDATED NEXT ASSEMBLY, ADDED 5550486	02/24/2010	AC	00333	
D-001	UPDATED NEXT ASSEMBLY	01/21/2011	TM	00439	
D-010	UPDATED NEXT ASSEMBLIES	07/24/2013	TM	00611	
E	REPLACED 5550481 WITH 5550087	10/29/2013	TM	00593	
F	REPLACED 5590240 WITH 5590175, UPDATED NEXT ASSEMBLIES	05/05/2015	MR	00683	



ITEM NO	PART NUMBER	DESCRIPTION	QTY	REV
1	5700031	ZERO ANGLE MTG BRACKET	1	C
2	5590175	PUSH BUTTON AIR VALVE	1	A
3	5530043	SHCS M3 x 0.5 x 30	2	-
4	5545024	WASHER M3 x 9mm	2	-
5	5535020	NUT M3 x 0.5 NL	2	-
6	5550087	FTG ELB -04 COMP x -02 NPT	1	-
7	5550486	FTG NPL -02 NPT x -04 F NPT	1	-

DO NOT SCALE DRAWING

NAME DATE

DRAWN AC 3/14/2008

CHECKED CA 09/02/2015

DIMENSIONS ARE IN MM

THIRD ANGLE PROJECTION



PROPRIETARY AND CONFIDENTIAL  
THE INFORMATION CONTAINED IN THIS DRAWING IS  
THE SOLE PROPERTY OF BENDPAK INC. ANY  
REPRODUCTION IN PART OR AS A WHOLE WITHOUT  
THE WRITTEN PERMISSION OF BENDPAK INC. IS  
PROHIBITED.

**BendPak** 1645 LEMONWOOD DR.  
SANTA PAULA, CA 93060

TITLE:  
PUSH BUTTON AIR ASSEMBLY

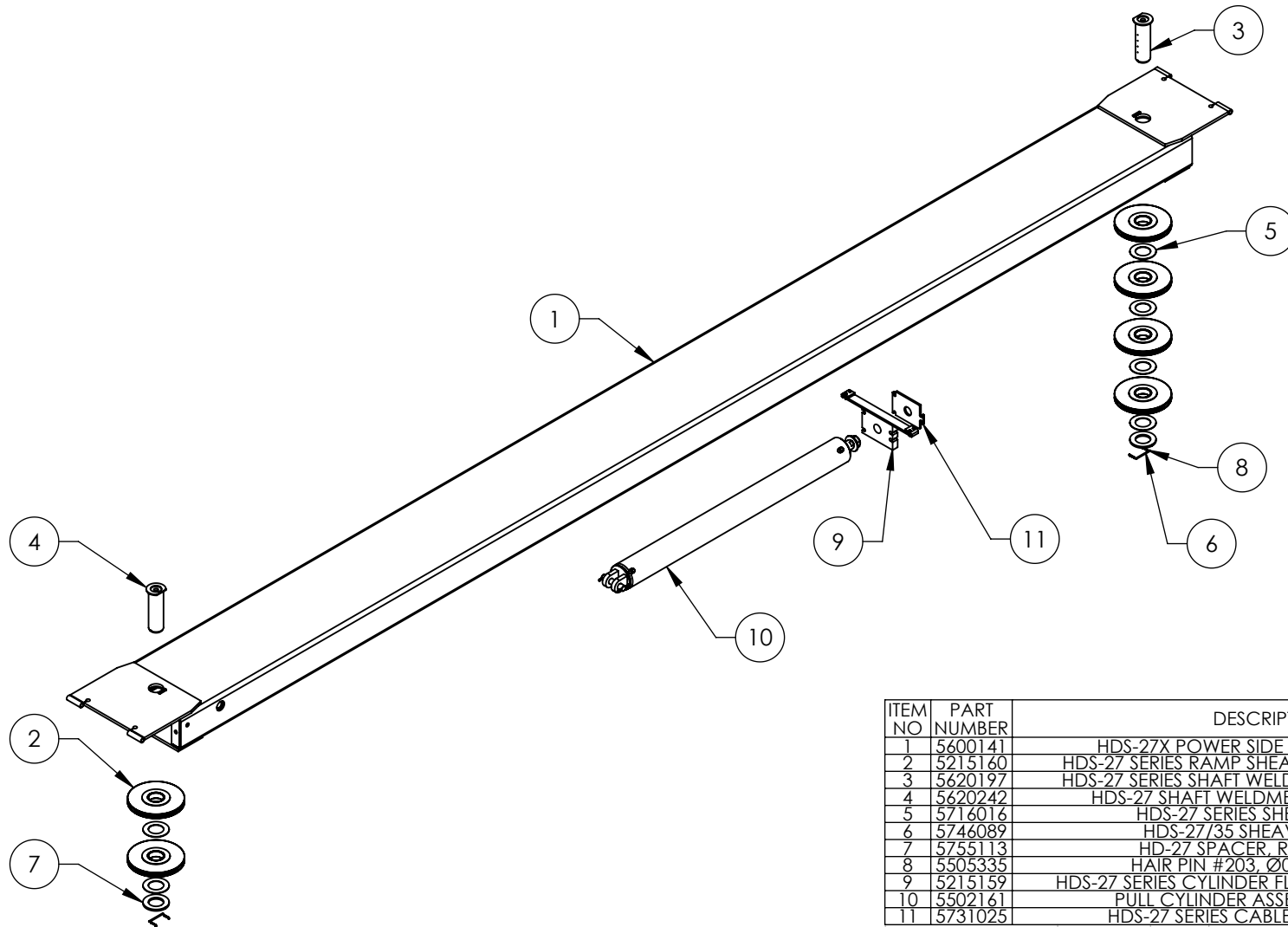
SIZE DWG. NO. REV  
**A** 5215096 F

SCALE: 2:3 SHEET 1 OF 1

**NOTE: UNLESS OTHERWISE SPECIFIED.**  
1. ASSEMBLE ITEMS AS SHOWN

NEXT ASSEMBLY
HD/HDS/HDSO
SERIES
5250118
5250249
5250364

		REVISION			
REV	DESCRIPTION	DATE	EDITED BY	ECO#	
M	REMOVED 5535031, 5505175 AND 5505120	01/29/2015	MR	00675	
N	UPDATED BOM REVISION	05/01/2015	MR	00683	
P	REMOVED 5550026, UPDATED BOM REVISIONS	09/21/2015	TM	00724	



ITEM NO	PART NUMBER	DESCRIPTION	QTY	REV
1	5600141	HDS-27X POWER SIDE RAMP WELDMENT	1	G
2	5215160	HDS-27 SERIES RAMP SHEAVE ROLLER ASSEMBLY	6	B
3	5620197	HDS-27 SERIES SHAFT WELDMENT, 4 SHEAVE END	1	A
4	5620242	HDS-27 SHAFT WELDMENT, 2 SHEAVE END	1	A
5	5716016	HDS-27 SERIES SHEAVE SPACER	6	B
6	5746089	HDS-27/35 SHEAVE SHAFT PIN	2	B
7	5755113	HD-27 SPACER, RAMP SHEAVE	2	A
8	5505335	HAIR PIN #203, Ø0.093" X 1 5/8"	4	-
9	5215159	HDS-27 SERIES CYLINDER FLANGE ARM ASSEMBLY	1	C
10	5502161	PULL CYLINDER ASSEMBLY Ø5.0 x 60	1	F
11	5731025	HDS-27 SERIES CABLE RETAINER PLATE	1	A

DO NOT SCALE DRAWING

NAME DATE

DRAWN GJZ 10/21/2008

CHECKED

THIRD ANGLE PROJECTION

DIMENSIONS ARE IN MM



PROPRIETARY AND CONFIDENTIAL  
THE INFORMATION CONTAINED IN THIS DRAWING IS  
THE SOLE PROPERTY OF BENDPAK INC. ANY  
REPRODUCTION IN PART OR AS A WHOLE WITHOUT  
THE WRITTEN PERMISSION OF BENDPAK INC. IS  
PROHIBITED.

**BendPak** 1645 LEMONWOOD DR.  
SANTA PAULA, CA 93060

TITLE: HDS-27X POWER SIDE  
RAMP ASSEMBLY

SIZE DWG. NO. REV

A 5215157 P

SCALE: 1:35

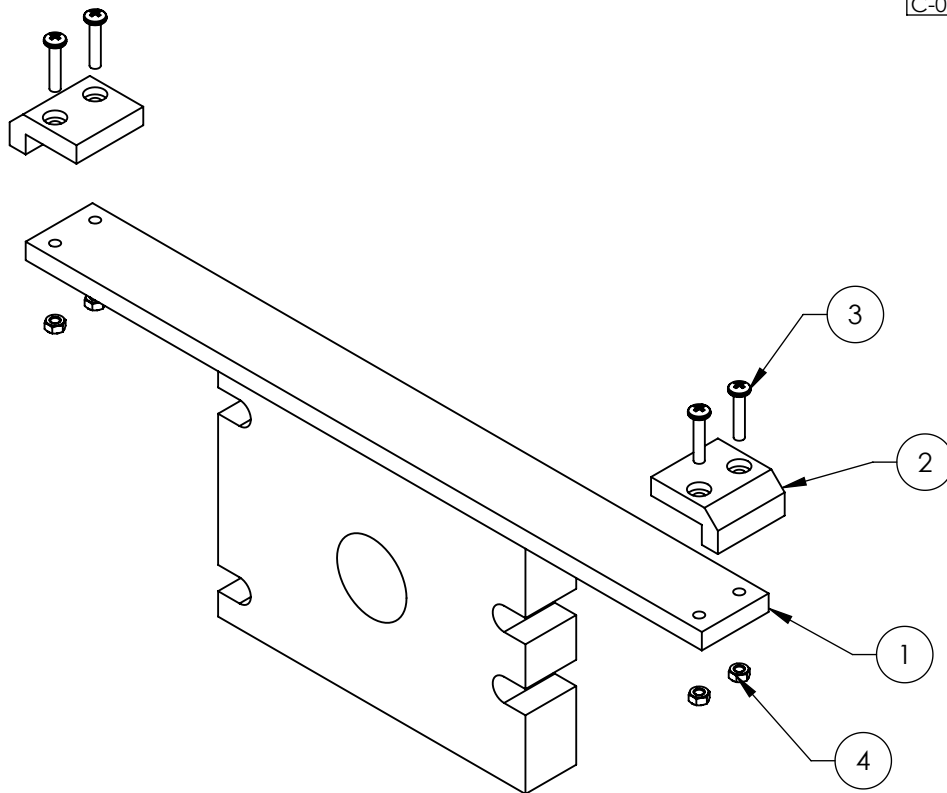
SHEET 1 OF 2

# **NOTE: UNLESS OTHERWISE SPECIFIED.**

1. SEE SHIPPING INSTRUCTIONS FOR FINAL PACKAGING
2. ASSEMBLE ITEMS AS SHOWN
3. VERIFY CYLINDER PORTS ARE CAPPED OFF WITH 3/8" NPT STEEL PLUG

NEXT ASSEMBLY  
5245011

REVISION				
REV	DESCRIPTION	DATE	EDITED BY	ECO#
A	DERIVED FROM H-294/H-310, PRODUCTION RELEASE	10/21/2008	GJZ	00241
B	UPDATED BOM REVISION	03/08/2010	TM	00333
C	CHANGED TITLE WAS "ALIGNMENT PLATE" NOW "CYLINDER FLANGE ARM", UPDATED BOM REVISION	05/17/2010	TM	00355
C-001	UPDATED NEXT ASSEMBLY	06/02/2015	TM	00683
C-002	UPDATED NEXT ASSEMBLY	09/18/2015	TM	00724



ITEM NO	PART NUMBER	DESCRIPTION	QTY	REV
1	5620202	HDS-27 SERIES CYLINDER FLANGE ARM WELDMENT	1	C
2	5716153	HDS-27/35 SERIES ALIGNMENT BLOCK	2	B
3	5530095	BHPs M6 x 1 x 30mmL	4	-
4	5535357	NUT M6 x 1.0 NL	4	-

DO NOT SCALE DRAWING

NAME DATE

DRAWN GJZ 10/21/2008

CHECKED

DIMENSIONS ARE IN MM

THIRD ANGLE PROJECTION



PROPRIETARY AND CONFIDENTIAL  
THE INFORMATION CONTAINED IN THIS DRAWING IS THE SOLE PROPERTY OF BENDPAK INC. ANY REPRODUCTION IN PART OR AS A WHOLE WITHOUT THE WRITTEN PERMISSION OF BENDPAK INC. IS PROHIBITED.

**BendPak** 1645 LEMONWOOD DR.  
SANTA PAULA, CA 93060

TITLE: HDS-27 SERIES CYLINDER FLANGE ARM ASSEMBLY

SIZE DWG. NO. REV

A 5215159 C

SCALE: 1:4

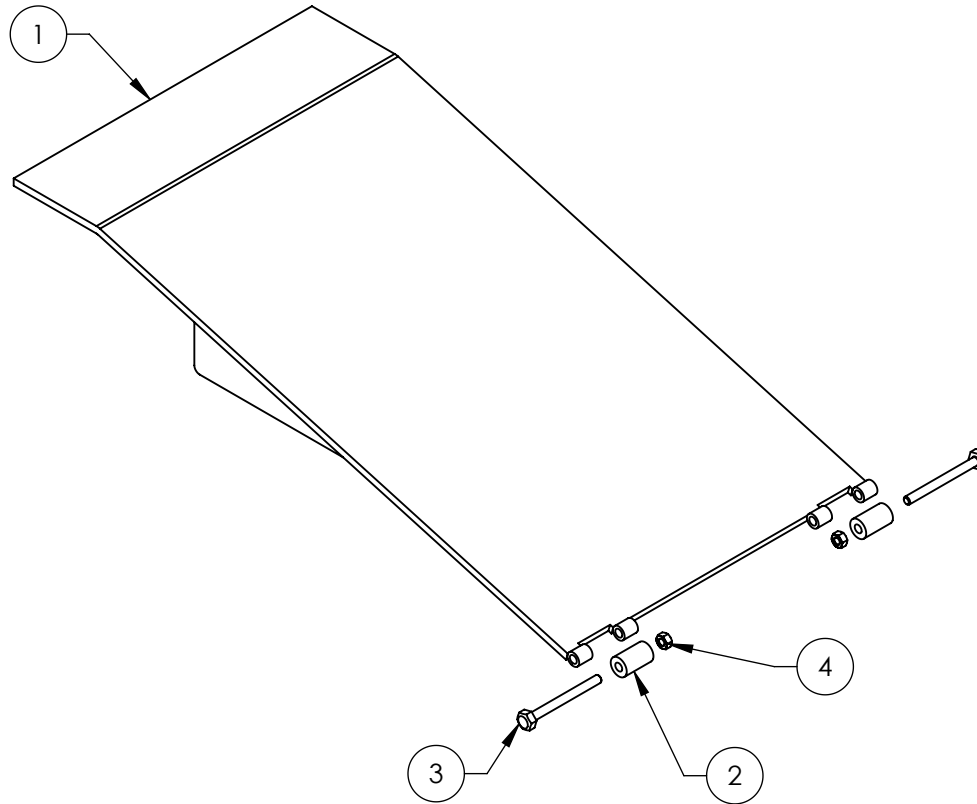
SHEET 1 OF 1

# **NOTE: UNLESS OTHERWISE SPECIFIED.**

- SEE SHIPPING INSTRUCTIONS FOR FINAL PACKAGING
- ASSEMBLE ITEMS AS SHOWN

NEXT ASSEMBLY
5215157
5215164
5215689

REVISION				
REV	DESCRIPTION	DATE	EDITED BY	ECO#
B	UPDATED TITLE TO REFLECT WHERE USED, UPDATED NEXT ASSEMBLIES	05/02/2013	TM	00593
C	UPDATED BOM REVISION	09/09/2014	TM	00666 PREA
C-001	UPDATED NEXT ASSEMBLIES	09/26/2014	TM	00666
C-002	UPDATED NEXT ASSEMBLY	06/04/2015	TM	00683
D	UPDATED BOM REVISION UPDATED NEXT ASSEMBLY	10/05/2015	TM	00724



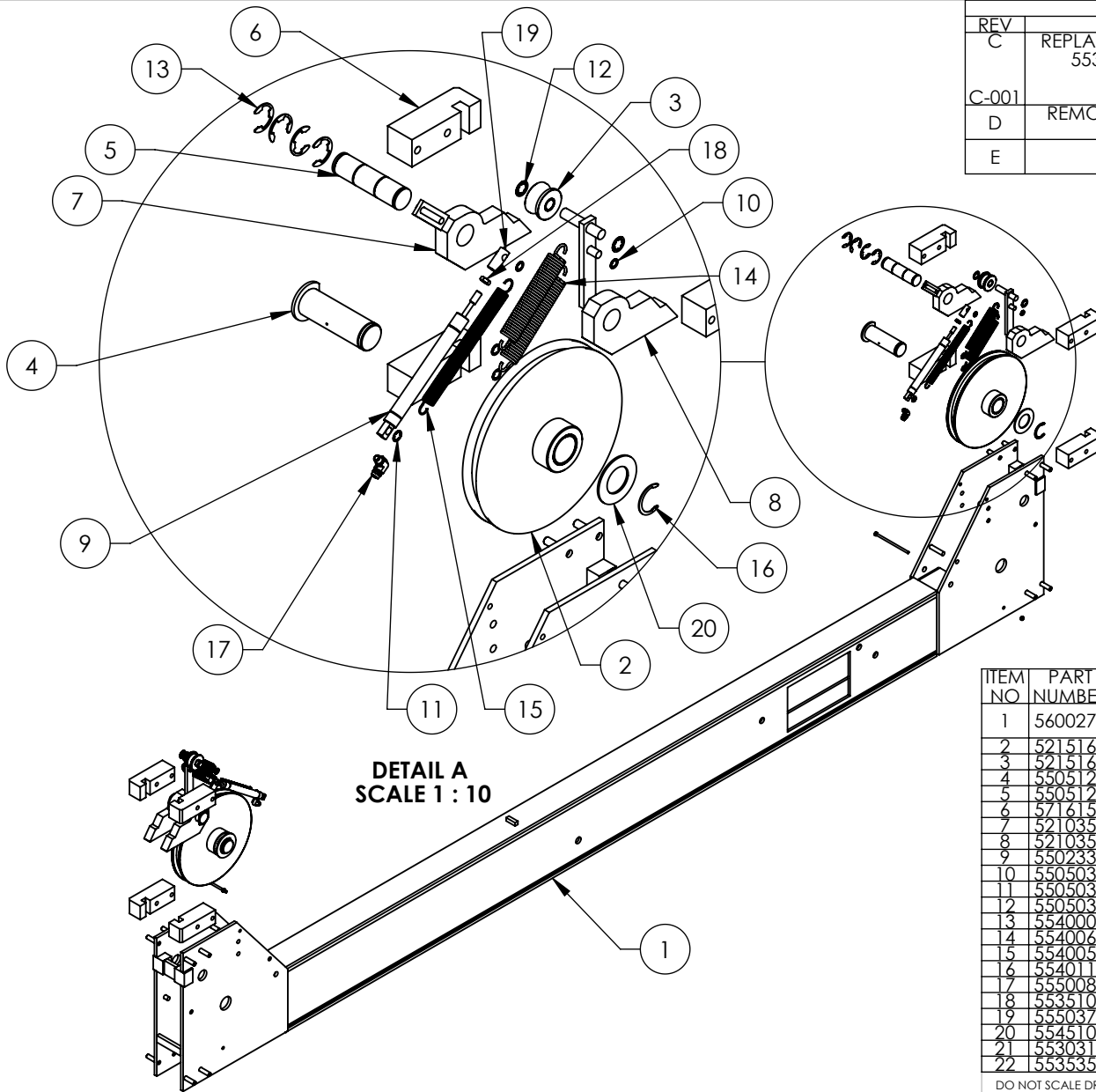
ITEM NO	PART NUMBER	DESCRIPTION	QTY	REV
1	5620206	HDS-27 DRIVE UP RAMP WELDMENT	1	D
2	5575663	HDS-27/35 DRIVE UP RAMP WHEEL	2	B
3	5530035	HHB M12 x 1.75 x 130	2	-
4	5535012	NUT M12x1.75 NL	2	-

DO NOT SCALE DRAWING		NAME	DATE	1645 LEMONWOOD DR. SANTA PAULA, CA 93060
DRAWN		GJZ	10/23/2008	
CHECKED				
DIMENSIONS ARE IN MM		THIRD ANGLE PROJECTION		TITLE: HDS-27 DRIVE UP RAMP ASSEMBLY
		<small>PROPRIETARY AND CONFIDENTIAL</small> <small>THE INFORMATION CONTAINED IN THIS DRAWING IS THE SOLE PROPERTY OF BENDPAK INC. ANY REPRODUCTION IN PART OR AS A WHOLE WITHOUT THE WRITTEN PERMISSION OF BENDPAK INC. IS PROHIBITED.</small>		SIZE DWG. NO.
		<b>A</b> 5215163		
SCALE: 1:10				REV D
				SHEET 1 OF 1

**NOTE: UNLESS OTHERWISE SPECIFIED.**

- SEE SHIPPING INSTRUCTIONS FOR FINAL PACKAGING
- ASSEMBLE ITEMS AS SHOWN

NEXT ASSEMBLY
5245007
5245011
5245405



DETAIL A  
SCALE 1 : 10

REVISION				
REV	DESCRIPTION	DATE	EDITED BY	ECO#
C	REPLACED 5700164 WITH 5716633, REMOVED 5530317 AND 5535357, UPDATED BOM REVISION AND NEXT ASSEMBLIES	09/09/2014	TM	00666
C-001	UPDATED NEXT ASSEMBLY	06/04/2015	TM	00683
D	REMOVED 5716633 AND 5550026, UPDATED NEXT ASSEMBLY	09/21/2015	TM	00724
E	UPDATED BOM REVISIONS	12/28/2015	JM	00741

ITEM NO	PART NUMBER	DESCRIPTION	QTY	REV
1	5600279	HDS-27/35 SERIES LARGE WINDOW CROSSTUBE WELDMENT	1	J
2	5215166	HDS-27 SERIES CROSSTUBE SHEAVE ASSEMBLY	2	B
3	5215169	HDS-27 SERIES SAFETY ROLLER ASSEMBLY	2	C
4	5505124	HDS-27/35 SERIES CROSS TUBE SHEAVE SHAFT	2	C
5	5505125	HDS-27/35 SAFETY PIN	2	C
6	5716152	HDS-27/35 SERIES PLASTIC SLIDE BLOCK	8	B
7	5210359	HDS-27/35 SERIES SAFETY WELDMENT #1	2	B
8	5210358	HDS-27/35 SERIES SAFETY WELDMENT #2	2	B
9	5502335	AIR CYLINDER, Ø.25 x 1.0" TRAVEL	2	-
10	5505030	ROTOR CLIP 10mm SS	4	-
11	5505031	ROTOR CLIP 12mm SS	6	-
12	5505033	ROTOR CLIP 16mm SS	4	-
13	5540002	F RING Ø1.375" OD TRUARC X5133-137	8	-
14	5540060	SPRING Ø29 x 178mm, SLACK SAFETY	4	A
15	5540055	SPRING Ø19 x 241mm, AIR CYLINDER	2	A
16	5540112	SNAP RING: TRUARC 5103-175	2	-
17	5550087	FIG FLB -04 COMP x -02 NPT	2	-
18	5535101	3/8-16 HEX NUT JAM	2	-
19	5550376	HDS-27/35 SERIES ADAPTER, 1" AIR CYLINDER	2	B
20	5545108	WASHER M45 x 80 FLAT	2	-
21	5530317	HHB M6 x 1 x 136	2	-
22	5535357	NUT M6 x 1.0 NL	2	-

DO NOT SCALE DRAWING

NAME DATE

DRAWN TM 04/29/2013

CHECKED

THIRD ANGLE PROJECTION

DIMENSIONS ARE IN MM



PROPRIETARY AND CONFIDENTIAL  
THE INFORMATION CONTAINED IN THIS DRAWING IS THE SOLE PROPERTY OF BENDPAK INC. ANY REPRODUCTION IN PART OR AS A WHOLE WITHOUT THE WRITTEN PERMISSION OF BENDPAK INC. IS PROHIBITED.

**BendPak** 1645 LEMONWOOD DR.  
SANTA PAULA, CA 93060

TITLE: HDS-27 SERIES LARGE WINDOW CROSSTUBE ASSEMBLY

SIZE DWG. NO. REV  
**A** 5215608 E

SCALE: 1:20

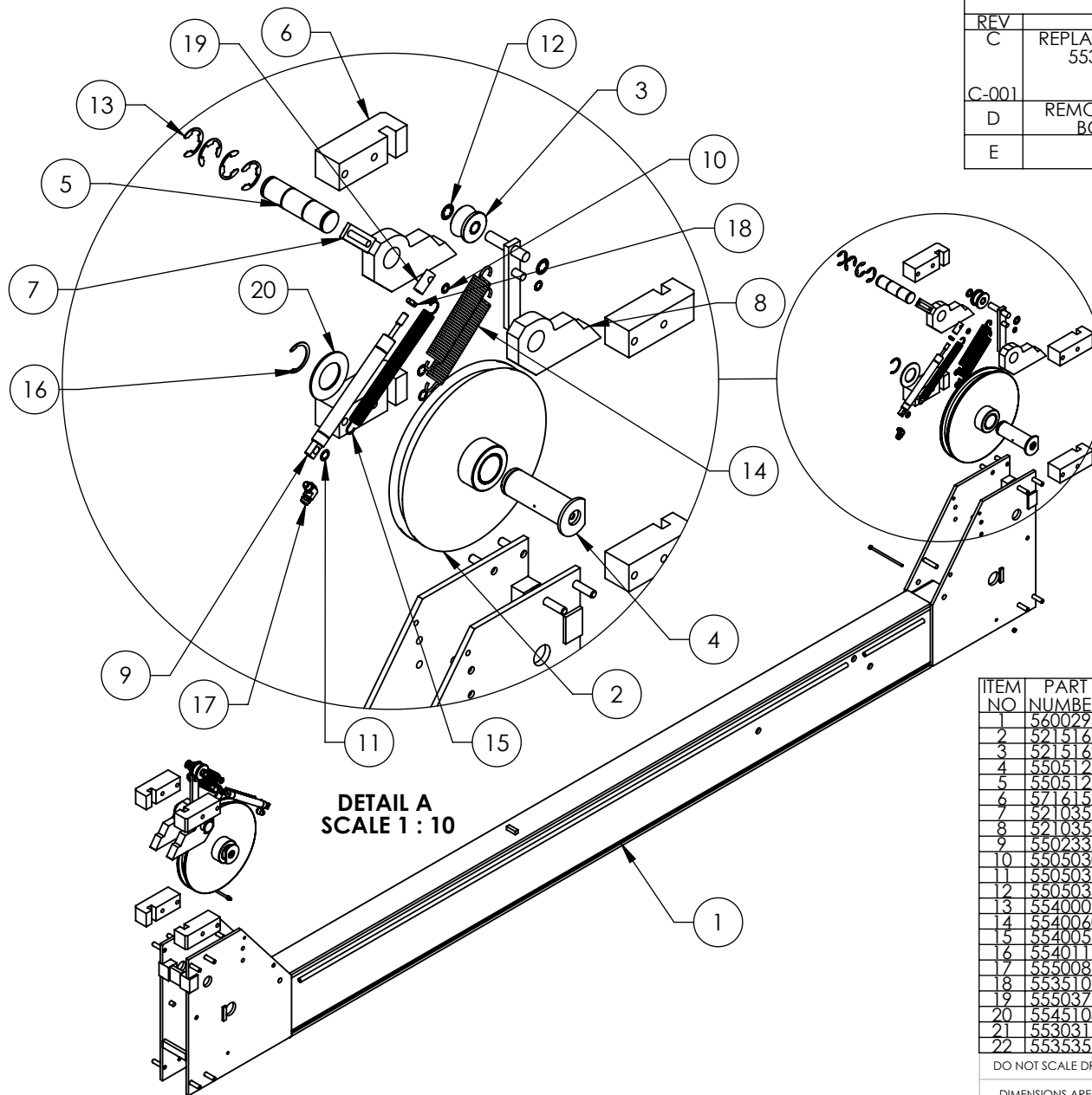
SHEET 1 OF 1

**NOTE: UNLESS OTHERWISE SPECIFIED.**

- SEE SHIPPING INSTRUCTIONS FOR FINAL PACKAGING
- ASSEMBLE ITEMS AS SHOWN

NEXT ASSEMBLY
5245007
5245011
5245405





REVISION		DATE	EDITED BY	ECO#
REV	DESCRIPTION			
C	REPLACED 5700164 WITH 5716633, REMOVED 5530317 AND 5535357, UPDATED BOM REVISION AND NEXT ASSEMBLIES	09/09/2014	TM	00666
C-001	UPDATED NEXT ASSEMBLY	06/04/2015	TM	00683
D	REMOVED 5716633 AND 5550026, UPDATED BOM REVISION AND NEXT ASSEMBLY	09/18/2015	TM	00724
E	UPDATED BOM REVISIONS	12/28/2015	JM	00741

ITEM NO	PART NUMBER	DESCRIPTION	QTY	REV
1	5600293	HDS-27/35 SERIES SMALL WINDOW CROSSTUBE WELDMENT	1	J
2	5215166	HDS-27 SERIES CROSSTUBE SHEAVE ASSEMBLY	2	B
3	5215169	HDS-27 SERIES SAFETY ROLLER ASSEMBLY	2	C
4	5505124	HDS-27/35 SERIES CROSS TUBE SHEAVE SHAFT	2	C
5	5505125	HDS-27/35 SAFETY PIN	2	C
6	5716152	HDS-27/35 SERIES PLASTIC SLIDE BLOCK	8	B
7	5210359	HDS-27/35 SERIES SAFETY WELDMENT #1	2	B
8	5210358	HDS-27/35 SERIES SAFETY WELDMENT #2	2	B
9	5502335	AIR CYLINDER, Ø.25 x 1.0" TRAVEL	2	-
10	5505030	ROTOR CLIP 10mm SS	4	-
11	5505031	ROTOR CLIP 12mm SS	6	-
12	5505033	ROTOR CLIP 16mm SS	4	-
13	5540002	E RING Ø1.375" OD TRUARC X5133-137	8	-
14	5540060	SPRING Ø29 x 178mm SLACK SAFETY	4	A
15	5540055	SPRING Ø19 x 241mm AIR CYLINDER	2	A
16	5540112	SNAP RING: TRUARC 5103-175	2	-
17	5550087	FTG FLB -.04 COMP x .02 NPT	2	-
18	5535101	3/8-16 HEX NUT JAM	2	-
19	5550376	HDS-27/35 SERIES ADAPTER, 1" AIR CYLINDER	2	B
20	5545108	WASHER M45 x 80 FLAT	2	-
21	5530317	HHB M6 x 1 x 136	2	-
22	5535357	NUT M6 x 1.0 NL	2	-

**NOTE: UNLESS OTHERWISE SPECIFIED.**

- SEE SHIPPING INSTRUCTIONS FOR FINAL PACKAGING
- ASSEMBLE ITEMS AS SHOWN

NEXT ASSEMBLY
5245007
5245011
5245405

DO NOT SCALE DRAWING

DIMENSIONS ARE IN MM



NAME	DATE
DRAWN	TM 04/30/2013
CHECKED	
THIRD ANGLE PROJECTION	

PROPRIETARY AND CONFIDENTIAL  
THE INFORMATION CONTAINED IN THIS DRAWING IS THE SOLE PROPERTY OF BENDPAK INC. ANY REPRODUCTION IN PART OR AS A WHOLE WITHOUT THE WRITTEN PERMISSION OF BENDPAK INC. IS PROHIBITED.

**BendPak** 1645 LEMONWOOD DR.  
SANTA PAULA, CA 93060

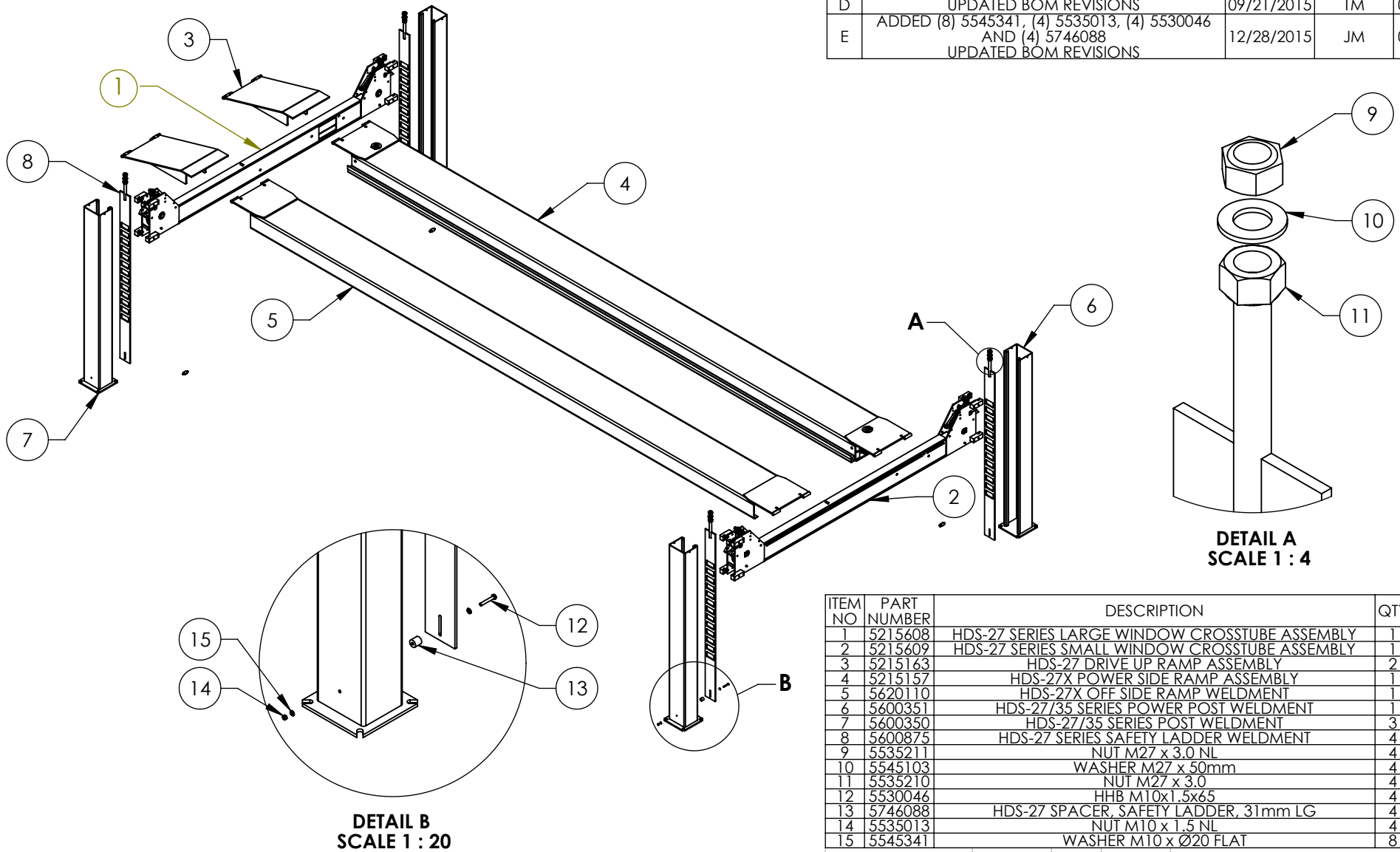
TITLE: HDS-27 SERIES SMALL WINDOW CROSSTUBE ASSEMBLY

SIZE DWG. NO. REV  
**A** 5215609 E

SCALE: 1:20

SHEET 1 OF 1

REV	DESCRIPTION	REVISION	DATE	EDITED BY	ECO#
C	UPDATED BOM REVISION		9/1/2015	CA	00683
D	UPDATED BOM REVISIONS		09/21/2015	TM	00724
E	ADDED (8) 5545341, (4) 5535013, (4) 5530046 AND (4) 5746088 UPDATED BOM REVISIONS		12/28/2015	JM	00741



ITEM NO	PART NUMBER	DESCRIPTION	QTY	REV
1	5215608	HDS-27 SERIES LARGE WINDOW CROSSTUBE ASSEMBLY	1	E
2	5215609	HDS-27 SERIES SMALL WINDOW CROSSTUBE ASSEMBLY	1	E
3	5215163	HDS-27 DRIVE UP RAMP ASSEMBLY	2	D
4	5215157	HDS-27X POWER SIDE RAMP ASSEMBLY	1	P
5	5620110	HDS-27X OFF SIDE RAMP WELDMENT	1	D
6	5600351	HDS-27/35 SERIES POWER POST WELDMENT	1	C
7	5600350	HDS-27/35 SERIES POST WELDMENT	3	C
8	5600875	HDS-27 SERIES SAFETY LADDER WELDMENT	4	B
9	5535211	NUT M27 x 3.0 NL	4	-
10	5545103	WASHER M27 x 50mm	4	-
11	5535210	NUT M27 x 3.0	4	-
12	5530046	HHB M10x1.5x65	4	A
13	5746088	HDS-27 SPACER, SAFETY LADDER, 31mm LG	4	A
14	5535013	NUT M10 x 1.5 NL	4	-
15	5545341	WASHER M10 x Ø20 FLAT	8	-

DO NOT SCALE DRAWING

NAME DATE  
DRAWN TM 09/10/2014

CHECKED  
THIRD ANGLE PROJECTION

DIMENSIONS ARE IN MM



PROPRIETARY AND CONFIDENTIAL  
THE INFORMATION CONTAINED IN THIS DRAWING IS THE SOLE PROPERTY OF BENDPAK INC. ANY REPRODUCTION IN PART OR AS A WHOLE WITHOUT THE WRITTEN PERMISSION OF BENDPAK INC. IS PROHIBITED.

**BendPak** 1645 LEMONWOOD DR.  
SANTA PAULA, CA 93060

TITLE: HDS-27X LIFT  
SUPERSTRUCTURE

SIZE DWG. NO. REV  
**A** 5245011 E

SCALE: 1:60

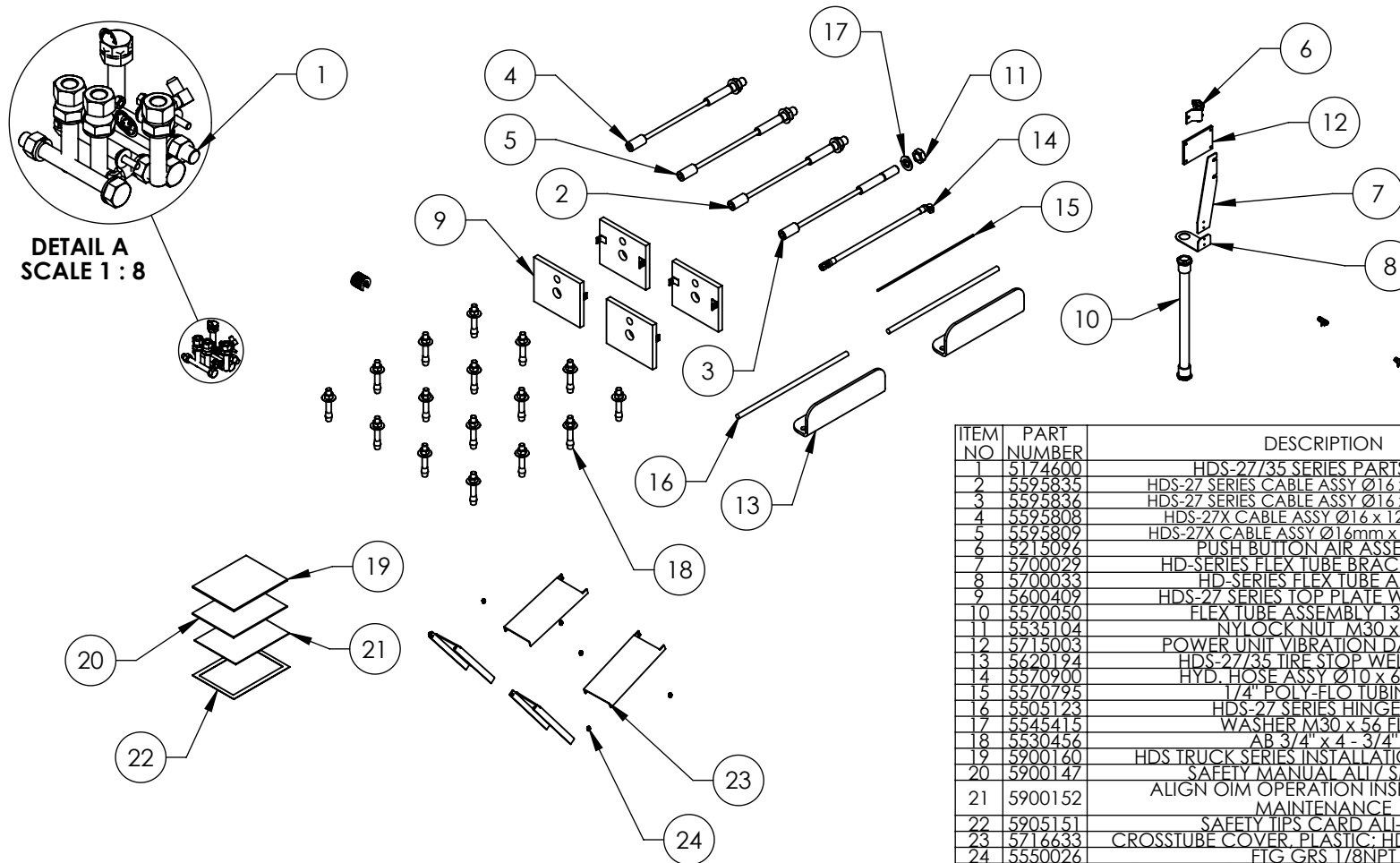
SHEET 1 OF 1

# **NOTE: UNLESS OTHERWISE SPECIFIED.**

- SEE SHIPPING INSTRUCTIONS FOR FINAL PACKAGING
- FASTEN NUTS AND WASHERS TO SAFETY LADDERS IN ORDER SHOWN FOR SHIPMENT

NEXT ASSEMBLY  
5260069

REVISION				
REV	DESCRIPTION	DATE	EDITED BY	ECO#
C	REMOVED 5736724, 5900153, AND 5215637, UPDATED NEXT ASSEMBLY	09/22/2014	TM	00666
D	REMOVED 5905103, 5905200, 5905407, 5905465, 5905940, AND 5930605, UPDATED BOM REVISIONS	08/04/2015	TM	00683
E	ADDED 5716633 AND 5550026, REMOVED 5900151, UPDATED BOM REVISIONS	09/21/2015	TM	00724



ITEM NO.	PART NUMBER	DESCRIPTION	QTY.	REV
1	5174600	HDS-27/35 SERIES PARTS BAG	1	F
2	5595835	HDS-27 SERIES CABLE ASSY Ø16 x 4127mm ST	1	C
3	5595836	HDS-27 SERIES CABLE ASSY Ø16 x 5855mm ST	1	C
4	5595808	HDS-27X CABLE ASSY Ø16 x 12007mm ST	1	G
5	5595809	HDS-27X CABLE ASSY Ø16mm x 13739mm ST	1	G
6	5215096	PUSH BUTTON AIR ASSEMBLY	1	F
7	5700029	HD-SERIES FLEX TUBE BRACKET PLATE	1	F
8	5700033	HD-SERIES FLEX TUBE ANGLE	1	F
9	5600409	HDS-27 SERIES TOP PLATE WELDMENT	4	A
10	5570050	FLEX TUBE ASSEMBLY 1320mm	1	B
11	5535104	NYLOCK NUT M30 x 3.5	4	-
12	5715003	POWER UNIT VIBRATION DAMPENER	1	B
13	5620194	HDS-27/35 TIRE STOP WELDMENT	2	B
4	5570900	HYD. HOSE ASSY Ø10 x 6782mm	1	A
5	5570795	1/4" POLY-FLO TUBING	24000mm*	-
6	5505123	HDS-27 SERIES HINGE PIN	2	B
7	5545415	WASHER M30 x 56 FLAT	4	-
18	5530456	AB 3/4" x 4 - 3/4"	16	-
19	5900160	HDS TRUCK SERIES INSTALLATION MANUAL	1	-
20	5900147	SAFETY MANUAL ALL / SM 93-1	1	-
21	5900152	ALIGN OIM OPERATION INSPECTION & MAINTENANCE	1	-
22	5905151	SAFETY TIPS CARD ALL-ST 90	1	-
23	5716633	CROSSTUBE COVER, PLASTIC: HDS-27/35 SERIES	4	B
24	5550026	FIG GRS 1/8NPT	6	-

# **NOTE: UNLESS OTHERWISE SPECIFIED.**

- SEE SHIPPING INSTRUCTIONS FOR FINAL PACKAGING
- INSERT PARTS BAG INTO PARTS BOX FOR SHIPMENT
- THREAD 5535104 WITH 5545415 ONTO CABLES FOR SHIPMENT
- HOSES AND CABLES IN REPRESENTATIONAL FORM
- (\*) LENGTH FOR REFERENCE ONLY

NEXT ASSEMBLY  
5260069

DO NOT SCALE DRAWING

DIMENSIONS ARE IN MM



NAME DATE

DRAWN TM 05/08/2013

CHECKED

THIRD ANGLE PROJECTION



PROPRIETARY AND CONFIDENTIAL  
THE INFORMATION CONTAINED IN THIS DRAWING IS THE SOLE PROPERTY OF BENDPAK INC. ANY REPRODUCTION IN PART OR AS A WHOLE WITHOUT THE WRITTEN PERMISSION OF BENDPAK INC. IS PROHIBITED.

**BendPak** 1645 LEMONWOOD DR.  
SANTA PAULA, CA 93060

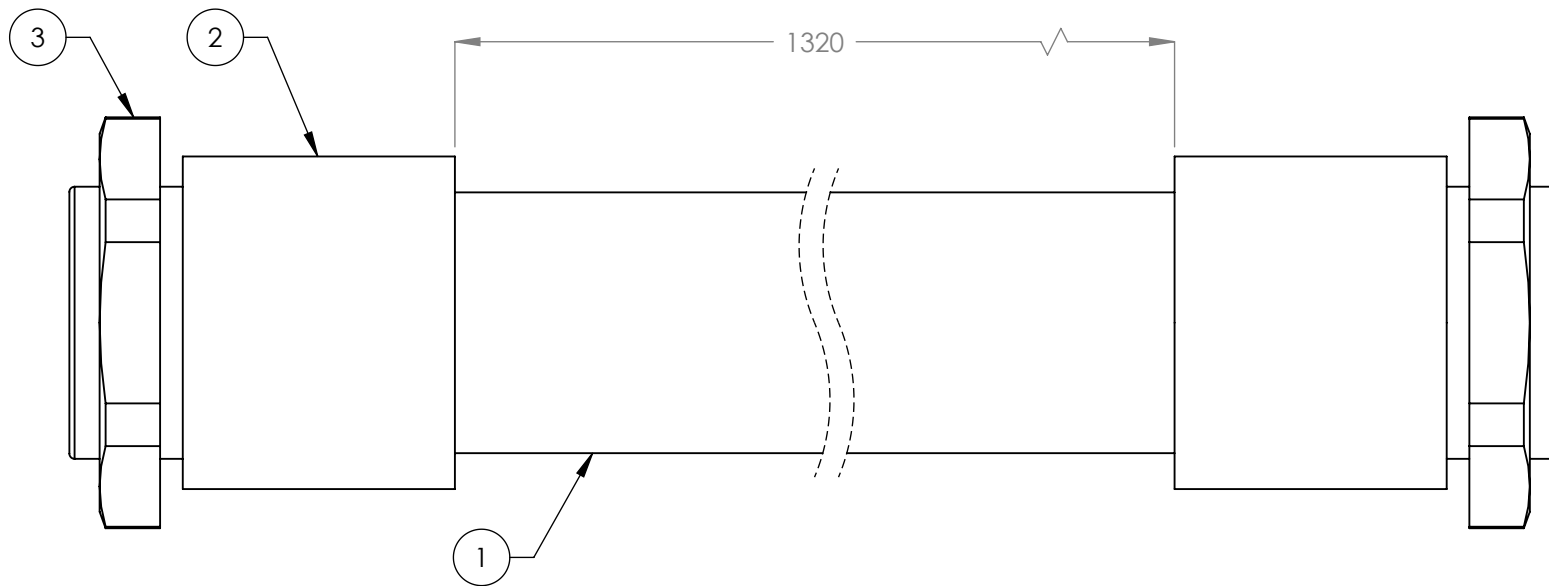
TITLE: PARTS BOX HDS-27X

SIZE DWG. NO. REV



A 5250175 D

SCALE: 1:25 SHEET 1 OF 1

REVISION				
REV.	DESCRIPTION	DATE	EDITED BY	ECO#
A	PRODUCTION RELEASE	12/24/2007	AC	00104
A-001	CHANGED SURFACE FINISH FROM 3.2 $\mu\text{m}$ TO 1.6 $\text{Ra } \mu\text{m}$	09/05/2008	GJ	00237
A-002	UPDATED NEXT ASSEMBLY	10/02/2008	AC	00140
B	UPDATE TUBE TO NEW STYLE, UPDATED NEXT ASSEMBLY AND TITLE	12/11/2008	AC	00256
B-001	UPDATED NEXT ASSEMBLY	05/04/2009	AC	00277
B-013	UPDATED NEXT ASSEMBLIES	05/17/2013	TM	00593



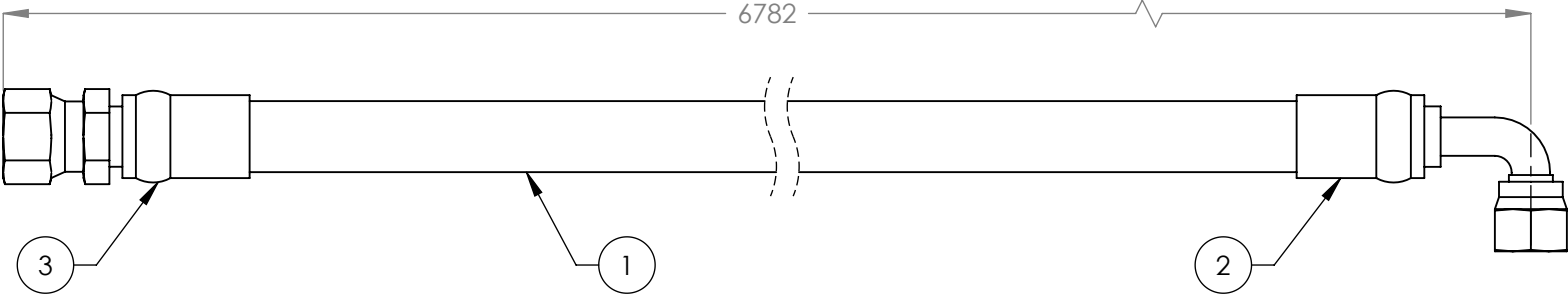
ITEM NO	PART NUMBER	DESCRIPTION	QTY.	REV
1	5570053	PE FLEX TUBE $\varnothing 34.5 \times \varnothing 29$	1386mm*	-
2	5555555	WQG1-M36/AD34.5 CONNECTOR	2	-
3	5535050	PLASTIC NUT M36 x 2	2	-

DO NOT SCALE DRAWING		NAME	DATE	 <b>BendPak.</b> 1645 LEMONWOOD DR. SANTA PAULA, CA 93060	
DIMENSIONS ARE IN MM TOLERANCES: 0. = ±1.5 0.0 = ±1.0 0.00 = ±0.25 0.000 = ±0.13  ANGULAR: MACH ±2°  SURFACE FINISH 1.6 ISO Ra μm FOR MACHINED SURFACES UNLESS OTHERWISE SPECIFIED MATERIAL:		DRAWN	AC	12/24/2007	<div>TITLE:</div> <div>FLEX TUBE ASSEMBLY 1320mm</div> <div><div>SIZE</div><div>DWG. NO.</div><div>REV</div><div>A5570050B</div></div>
		CHECKED			
		THIRD ANGLE PROJECTION			
					
SIZE:		THE INFORMATION CONTAINED IN THIS DRAWING IS THE SOLE PROPERTY OF <b>BENDPAK INC.</b> ANY REPRODUCTION IN PART OR AS A WHOLE WITHOUT THE WRITTEN PERMISSION OF <b>BENDPAK INC.</b> IS PROHIBITED.			
				SCALE: 1:1	
				SHEET 1 OF 1	



**NOTE: UNLESS OTHERWISE SPECIFIED.**

- FOR ITEM 1 SPECIFICATIONS REFER TO PART SPECIFICATION FORM
- (\*)ITEM 1 QTY FOR REFERENCE ONLY

REVISION				
REV	DESCRIPTION	DATE	EDITED BY	ECO#
A	PRODUCTION RELEASE	08/27/2008	AC	00235
A-001	UPDATED NEXT ASSEMBLY	07/31/2009	TM	00241
A-002	UPDATED NEXT ASSEMBLY	06/11/2010	TM	00371
A-003	UPDATED NEXT ASSEMBLIES	09/26/2012	TM	00545
A-004	UPDATED NEXT ASSEMBLIES	05/20/2013	TM	00593
A-005	UPDATED NEXT ASSEMBLIES	04/29/2014	TM	00646
A-006	UPDATED NEXT ASSEMBLIES	06/04/2015	TM	00683



ITEM NO	PART NUMBER	DESCRIPTION	QTY.	REV
1	5570116	Ø10 ID HYDRAULIC HOSE	6744*mm	-
2	5550337	FTG ELB -06 CRIMP x -06 JIC	1	-
3	5550336	FTG NPL -06 CRIMP x -06 JIC	1	-

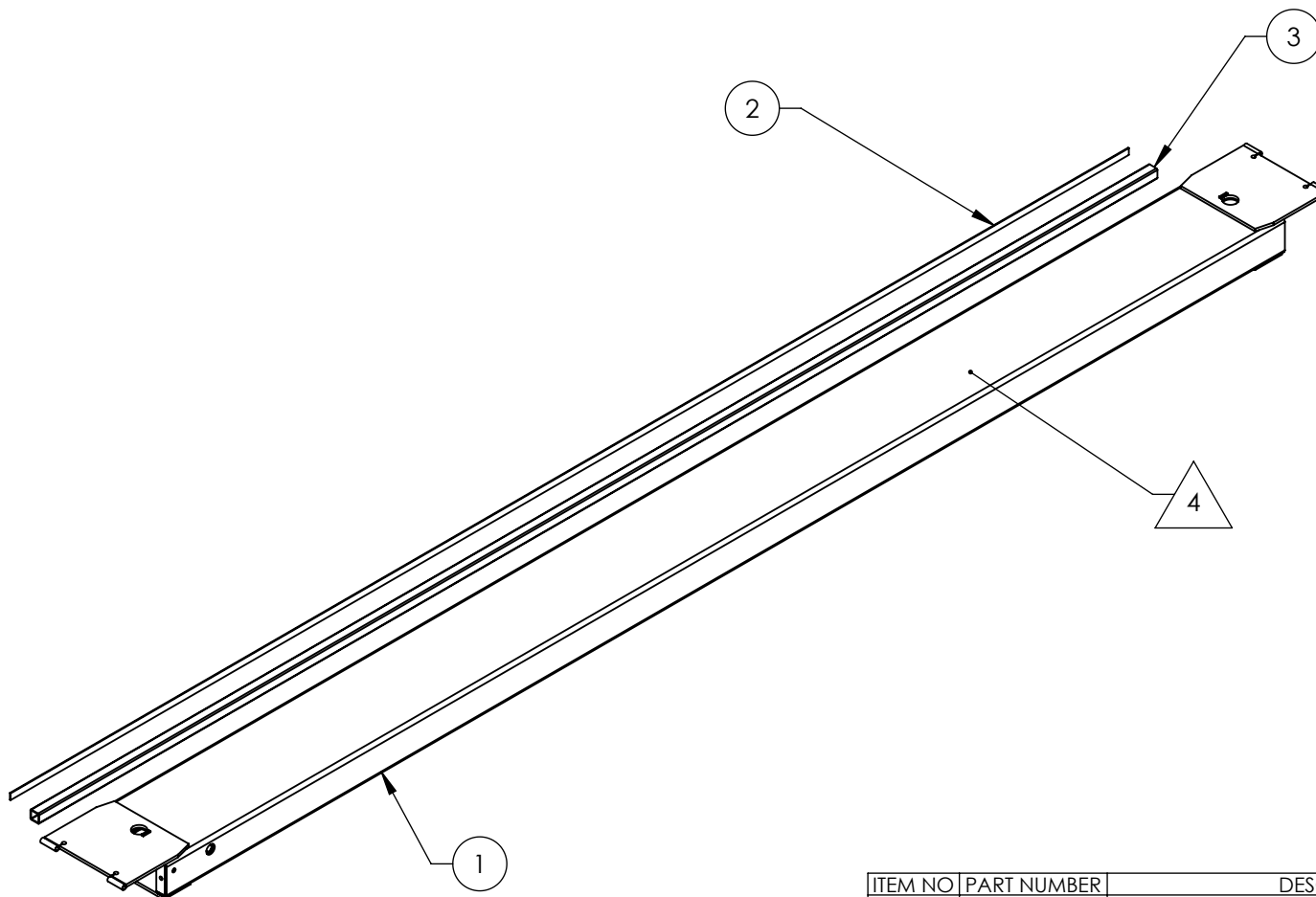
DO NOT SCALE DRAWING		NAME	DATE	 <b>BendPak.</b> 1645 LEMONWOOD DR. SANTA PAULA, CA 93060 <small>HYDRAULIC AUTOMATIC BEND SOLUTIONS</small>		
		DRAWN	AC		08/27/2008	
		CHECKED	CA		08/27/2015	
DIMENSIONS ARE IN MM TOLERANCES: 0. = ±1.5 0.0 = ±1.0 0.00 = ±0.25 0.000 = ±0.13  ANGULAR: MACH±2°  SURFACE FINISH 1.6 ISO Ra µm FOR MACHINED SURFACES UNLESS OTHERWISE SPECIFIED		THIRD ANGLE PROJECTION			TITLE: HYD. HOSE ASSY Ø10 x 6782mm	
						
		PROPRIETARY AND CONFIDENTIAL THE INFORMATION CONTAINED IN THIS DRAWING IS THE SOLE PROPERTY OF <b>BENDPAK INC.</b> ANY REPRODUCTION IN PART OR AS A WHOLE WITHOUT THE WRITTEN PERMISSION OF <b>BENDPAK INC.</b> IS PROHIBITED.			SIZE DWG. NO.	REV
					<b>A</b> 5570900	A
					SCALE: 1:2	SHEET 1 OF 1

**NOTE: UNLESS OTHERWISE SPECIFIED.**

1. FOR ITEM 1 SPECIFICATIONS REFER TO PART SPECIFICATION FORM

2. (\*)ITEM 1 QTY FOR REFERENCE ONLY



REVISION				
REV	DESCRIPTION	DATE	EDITED BY	ECO#
D	UPDATED BOM REVISION	01/13/2011	TM	00431
E	UPDATED BOM REVISION	12/06/2012	TM	00545
F	UPDATED BOM REVISION	05/15/2013	TM	00593
G	UPDATED BOM REVISION	12/8/2015	JM	00724



**NOTE: UNLESS OTHERWISE SPECIFIED.**

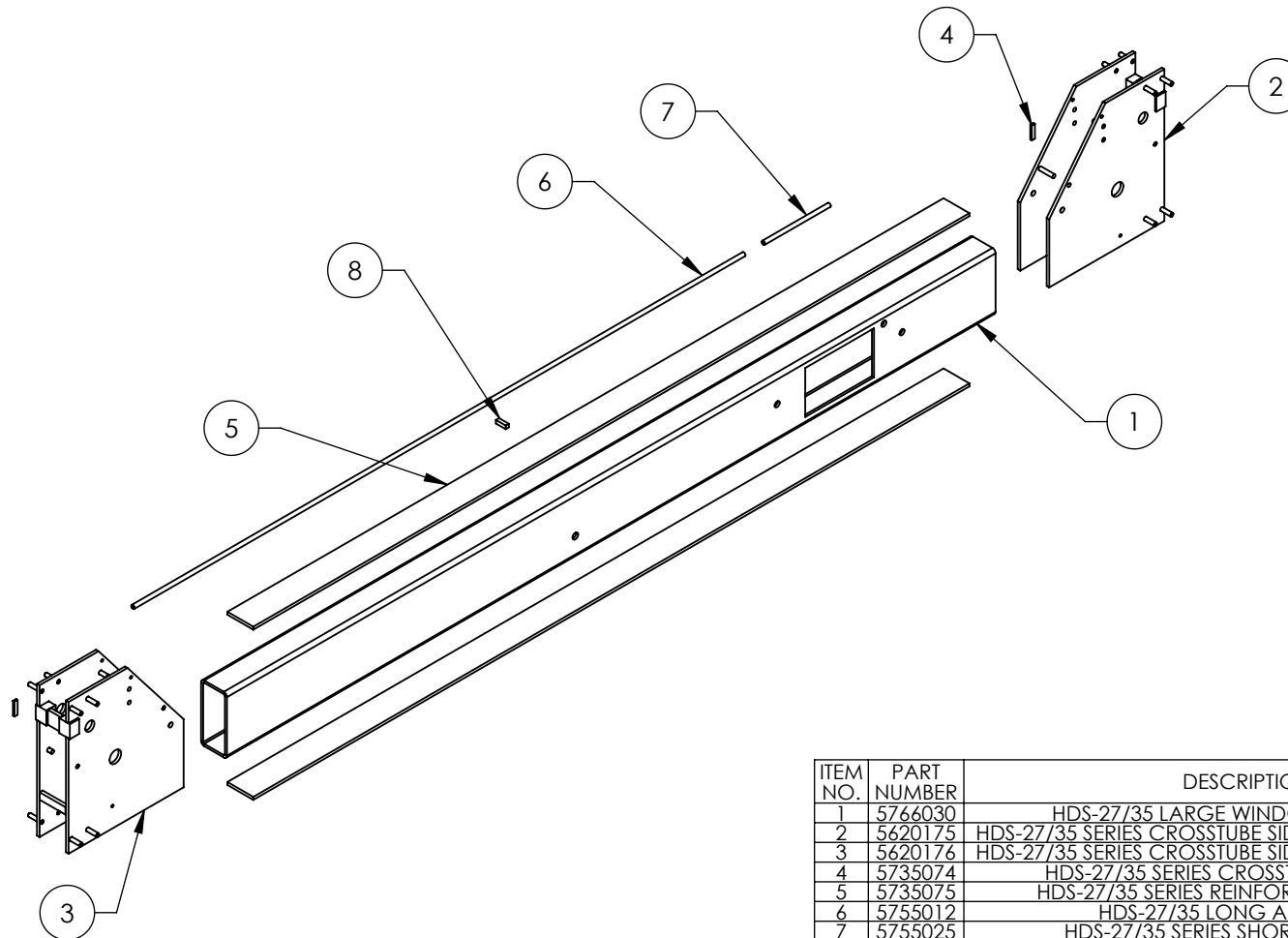
1. BREAK AND DEBURR ALL SHARP EDGES 0.3mm
2. REMOVE ALL WELD SPLATTER
3. PAINT BENDPAK BLUE
4. APPLY #30 GRIT ALUMINUM OXIDE WHEN PAINTING TO TOP ONLY

ITEM NO	PART NUMBER	DESCRIPTION	QTY	REV
1	5620198	HDS-27X POWER SIDE RAMP WELDMENT	1	F
2	5735082	HD/HDS-27X/35X ROLLING JACK PLATE	1	B
3	5765019	HD/HDS-27X/35X ROLLING JACK TUBE	1	B



DO NOT SCALE DRAWING		NAME	DATE			
DIMENSIONS ARE IN MM		DRAWN	GJZ	10/21/2008	 1645 LEMONWOOD DR. SANTA PAULA, CA 93066	
TOLERANCES:		CHECKED				
0. = ±1.5 0.0 = ±0.5		THIRD ANGLE PROJECTION				
ANGULAR: 0. = ±2°						
SURFACE FINISH 1.6 ISO Ra µm FOR MACHINED SURFACES UNLESS OTHERWISE SPECIFIED				TITLE: HDS-27X POWER SIDE RAMP WELDMENT		
MATERIAL:		<p><b>PROPRIETARY AND CONFIDENTIAL</b></p> <p>THE INFORMATION CONTAINED IN THIS DRAWING IS THE SOLE PROPERTY OF <b>BENDPAK INC.</b> ANY REPRODUCTION IN PART OR AS A WHOLE WITHOUT THE WRITTEN PERMISSION OF <b>BENDPAK INC.</b> IS PROHIBITED.</p>		SIZE	DWG. NO.	REV
SIZE:				A	5600141	G
		SCALE: 1:35			SHEET 1 OF 2	

**BendPak** 1645 LEMONWOOD DR.  
SANTA PAULA, CA 93060

REVISION				
REV	DESCRIPTION	DATE	EDITED BY	ECO#
G	UPDATED BOM REVISIONS	04/21/2014	TM	00646
H	UPDATED BOM REVISION	09/22/2014	TM	00666
J	UPDATED BOM REVISION	01/04/2016	JM	00741



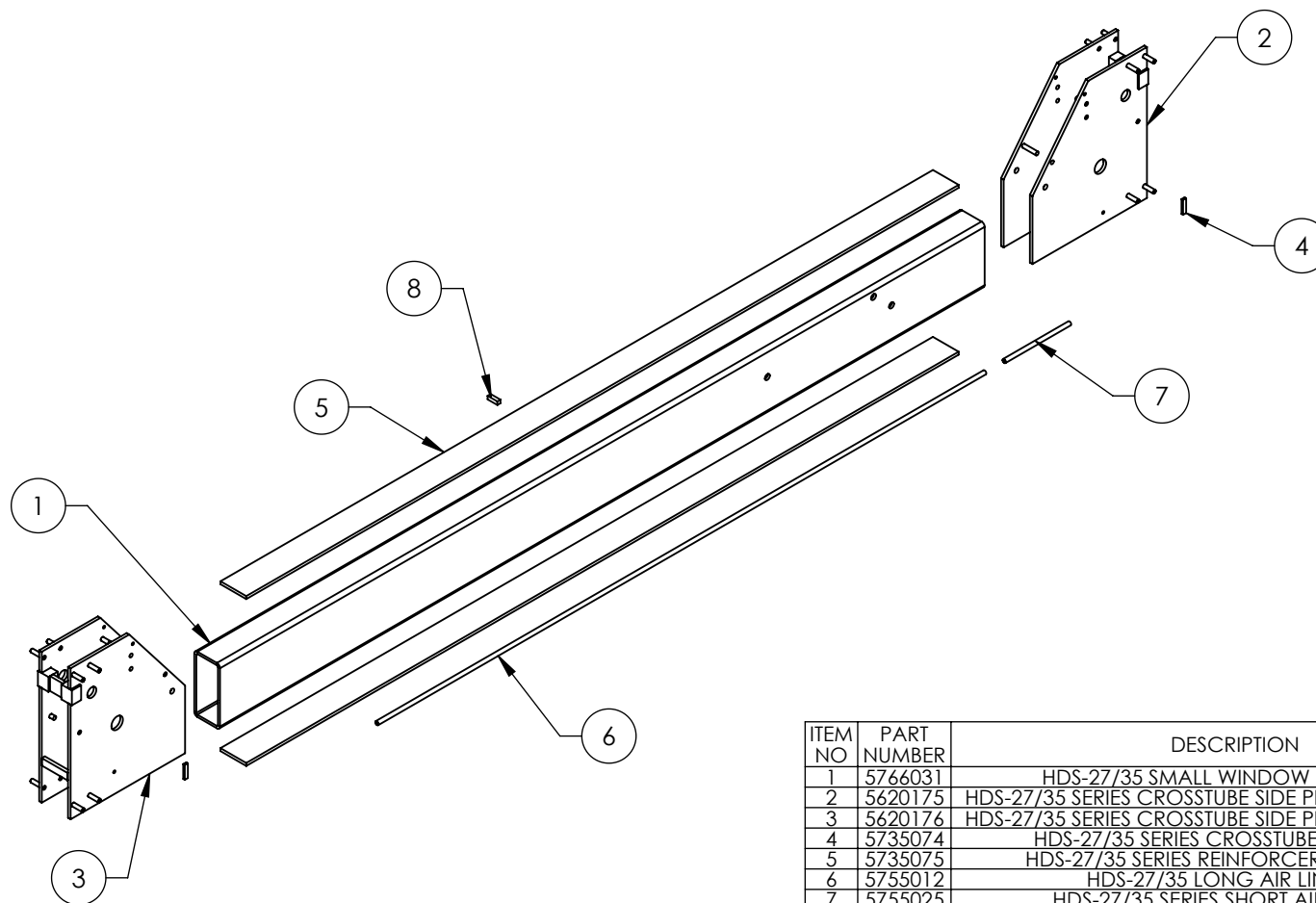
ITEM NO.	PART NUMBER	DESCRIPTION	QTY	REV
1	5766030	HDS-27/35 LARGE WINDOW CROSSTUBE	1	A
2	5620175	HDS-27/35 SERIES CROSSTUBE SIDE PLATE WELDMENT #1	1	H
3	5620176	HDS-27/35 SERIES CROSSTUBE SIDE PLATE WELDMENT #2	1	H
4	5735074	HDS-27/35 SERIES CROSSTUBE SHAFT STOP	2	B
5	5735075	HDS-27/35 SERIES REINFORCER, CROSSTUBE	2	A
6	5755012	HDS-27/35 LONG AIR LINE PIPE	1	B
7	5755025	HDS-27/35 SERIES SHORT AIR LINE PIPE	1	B
8	5760003	HD-12/14 RAMP STOP	1	D

DO NOT SCALE DRAWING		NAME	DATE	 <b>BendPak.</b> 1645 LEMONWOOD DR. SANTA PAULA, CA 93060		
DIMENSIONS ARE IN MM TOLERANCES: 0. = ±1.5 0.0 = ±0.5  ANGULAR: 0. = ±2°  SURFACE FINISH 1.6 ISO Ra µm FOR MACHINED SURFACES UNLESS OTHERWISE SPECIFIED		DRAWN	GJZ			09/18/2008
		CHECKED				
		THIRD ANGLE PROJECTION			TITLE: HDS-27/35 SERIES LARGE WINDOW CROSSTUBE WELDMENT	
						
		PROPRIETARY AND CONFIDENTIAL THE INFORMATION CONTAINED IN THIS DRAWING IS THE SOLE PROPERTY OF <b>BENDPAK INC.</b> ANY REPRODUCTION IN PART OR AS A WHOLE WITHOUT THE WRITTEN PERMISSION OF <b>BENDPAK INC.</b> IS PROHIBITED.			SIZE	DWG. NO.
Y				A	5600279	J
					SCALE: 1:20	SHEET 1 OF 2

**NOTE: UNLESS OTHERWISE SPECIFIED.**

- BREAK AND DEBURR ALL SHARP EDGES 0.3mm
- REMOVE ALL WELD SPLATTER
- PAINT BENDPAK BLUE

REVISION				
REV	DESCRIPTION	DATE	EDITED BY	ECO#
G	UPDATED BOM REVISION	04/21/2014	TM	00646
H	UPDATED BOM REVISION	09/22/2014	TM	00666
J	UPDATED BOM REVISION	01/04/2016	JM	00741



ITEM NO	PART NUMBER	DESCRIPTION	QTY	REV
1	5766031	HDS-27/35 SMALL WINDOW CROSSTUBE	1	A
2	5620175	HDS-27/35 SERIES CROSSTUBE SIDE PLATE WELDMENT #1	1	H
3	5620176	HDS-27/35 SERIES CROSSTUBE SIDE PLATE WELDMENT #2	1	H
4	5735074	HDS-27/35 SERIES CROSSTUBE SHAFT STOP	2	B
5	5735075	HDS-27/35 SERIES REINFORCER, CROSSTUBE	2	A
6	5755012	HDS-27/35 LONG AIR LINE PIPE	1	B
7	5755025	HDS-27/35 SERIES SHORT AIR LINE PIPE	1	B
8	5760003	HD-12/14 RAMP STOP	1	D

DO NOT SCALE DRAWING

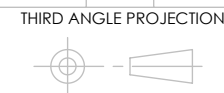
NAME	DATE
DRAWN GJZ	09/18/2008
CHECKED	

**BendPak** 1645 LEMONWOOD DR.  
SANTA PAULA, CA 93060

DIMENSIONS ARE IN MM  
TOLERANCES:  
0. = ±1.5  
0.0 = ±0.5

ANGULAR: 0. = ±2°

SURFACE FINISH 1.6 ISO Ra µm  
FOR MACHINED SURFACES  
UNLESS OTHERWISE SPECIFIED



**PROPRIETARY AND CONFIDENTIAL**  
THE INFORMATION CONTAINED IN THIS DRAWING IS  
THE SOLE PROPERTY OF BENDPAK INC. ANY  
REPRODUCTION IN PART OR AS A WHOLE WITHOUT  
THE WRITTEN PERMISSION OF BENDPAK INC. IS  
PROHIBITED.

TITLE: HDS-27/35 SERIES  
SMALL WINDOW  
CROSSTUBE WELDMENT

SIZE DWG. NO. REV

**A** 5600293 J

SCALE: 1:20

SHEET 1 OF 2

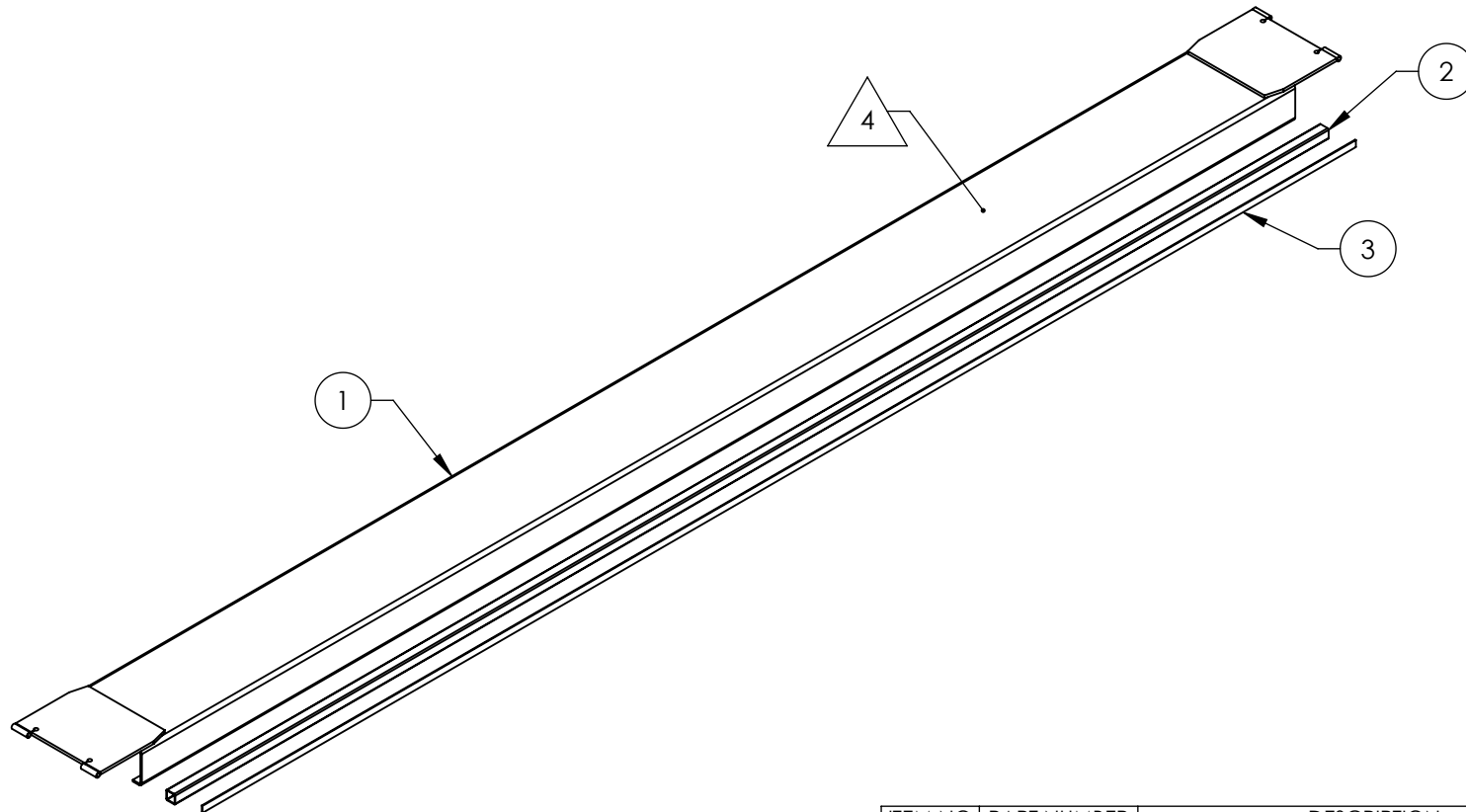
**NOTE: UNLESS OTHERWISE SPECIFIED.**

- BREAK AND DEBURR ALL SHARP EDGES 0.3mm
- REMOVE ALL WELD SPLATTER
- PAINT BENDPAK BLUE



NEXT ASSEMBLY
5215604
5215609



REVISION					
REV	DESCRIPTION	DATE	EDITED BY	ECO#	
B	UPDATED BOM REVISIONS	11/02/2009	AC	00312	
C	UPDATED BOM REVISION	01/19/2011	TM	00431	
C-001	UPDATED NEXT ASSEMBLY	05/21/2013	TM	00593	
C-002	UPDATED NEXT ASSEMBLY	09/26/2014	TM	00666	
C-003	UPDATED NEXT ASSEMBLY	06/04/2015	TM	00683	
D	UPDATED BOM REVISION	10/07/2015	TM	00724	



ITEM NO	PART NUMBER	DESCRIPTION	QTY	REV
1	5620204	HDS-27X OFF SIDE RAMP WELDMENT	1	C
2	5765019	HD/HDS-27X/35X ROLLING JACK TUBE	1	B
3	5735082	HD/HDS-27X/35X ROLLING JACK PLATE	1	B

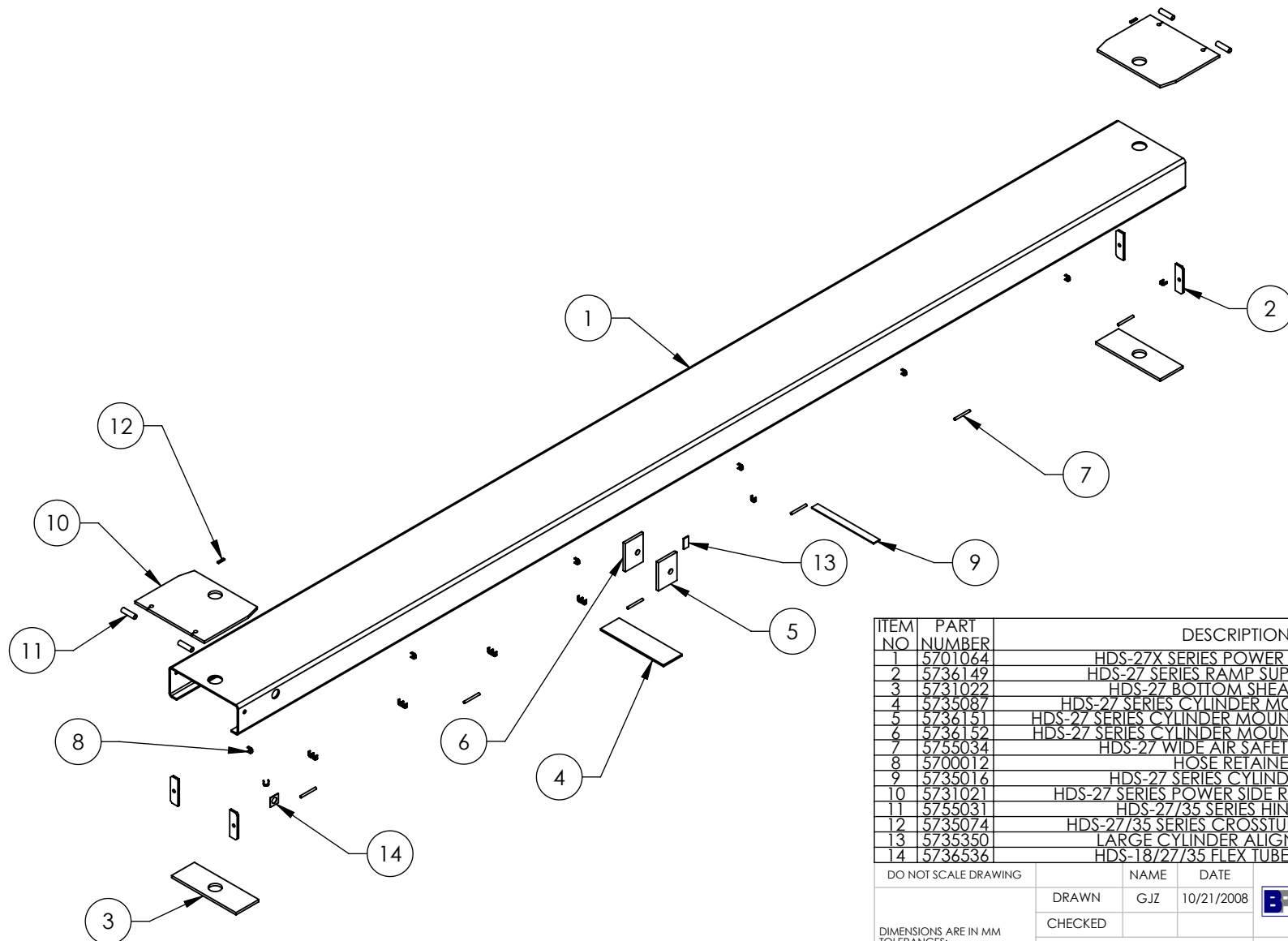
DO NOT SCALE DRAWING		NAME	DATE	 <b>BendPak.</b> 1645 LEMONWOOD DR. SANTA PAULA, CA 93060	
DIMENSIONS ARE IN MM TOLERANCES: 0. = ±1.5 0.0 = ±0.5 ANGULAR: 0. = ±2° SURFACE FINISH 1.6 ISO Ra µm FOR MACHINED SURFACES UNLESS OTHERWISE SPECIFIED		DRAWN	AC 04/22/2009		
		CHECKED			
		THIRD ANGLE PROJECTION		TITLE: HDS-27X OFF SIDE RAMP WELDMENT	
				SIZE DWG. NO.	REV
		<small>PROPRIETARY AND CONFIDENTIAL THE INFORMATION CONTAINED IN THIS DRAWING IS THE SOLE PROPERTY OF BENDPAK INC. ANY REPRODUCTION IN PART OR AS A WHOLE WITHOUT THE WRITTEN PERMISSION OF BENDPAK INC. IS PROHIBITED.</small>		<b>A</b> 5620110	D
		SCALE: 1:35		SHEET 1 OF 2	

**NOTE: UNLESS OTHERWISE SPECIFIED.**

1. BREAK AND DEBURR ALL SHARP EDGES 0.3mm
2. REMOVE ALL WELD SPLATTER
3. PAINT BENDPAK BLUE
4. APPLY #30 GRIT ALUMINUM OXIDE WHEN PAINTING TO TOP ONLY

NEXT ASSEMBLY  
5245011

		REVISION		
REV	DESCRIPTION	DATE	EDITED BY	ECO#
D	ADDED 5736536, UPDATED BOM REVISION	12/06/2012	TM	00545
E	ADDED (1) 5700012	05/15/2013	TM	00593
F	UPDATED TITLE TO REFLECT WHERE USED, ADDED 6mm WELD pg 4, UPDATED BOM REVISIONS AND NEXT ASSEMBLIES	09/24/2015	TM	00724



ITEM NO	PART NUMBER	DESCRIPTION	QTY	REV
1	5701064	HDS-27X SERIES POWER SIDE RAMP	1	C
2	5736149	HDS-27 SERIES RAMP SUPPORT PLATE	4	A
3	5731022	HDS-27 BOTTOM SHEAVE PLATE	2	A
4	5735087	HDS-27 SERIES CYLINDER MOUNTING PLATE	1	B
5	5736151	HDS-27 SERIES CYLINDER MOUNTING BLOCK (R.H.)	1	A
6	5736152	HDS-27 SERIES CYLINDER MOUNTING BLOCK (L.H.)	1	A
7	5755034	HDS-27 WIDE AIR SAFETY TROUGH	6	A
8	5700012	HOSE RETAINER	17	B
9	5735016	HDS-27 SERIES CYLINDER STRAP	1	B
10	5731021	HDS-27 SERIES POWER SIDE RAMP END PLATE	2	A
11	5755031	HDS-27/35 SERIES HINGE TUBE	4	B
12	5735074	HDS-27/35 SERIES CROSSTUBE SHAFT STOP	2	B
13	5735350	LARGE CYLINDER ALIGNMENT KEY	1	A
14	5736536	HDS-18/27/35 FLEX TUBE NUT PLATE	1	A

DO NOT SCALE DRAWING

DIMENSIONS ARE IN MM  
TOLERANCES:

0. = ±1.5  
0.0 = ±0.5

ANGULAR: 0. = ±2°

SURFACE FINISH 1.6 ISO Ra µm  
FOR MACHINED SURFACES  
UNLESS OTHERWISE SPECIFIED

NAME DATE  
DRAWN GJZ 10/21/2008

CHECKED  
THIRD ANGLE PROJECTION



PROPRIETARY AND CONFIDENTIAL  
THE INFORMATION CONTAINED IN THIS DRAWING IS  
THE SOLE PROPERTY OF BENDPAK INC. ANY  
REPRODUCTION IN PART OR AS A WHOLE WITHOUT  
THE WRITTEN PERMISSION OF BENDPAK INC. IS  
PROHIBITED.

**BendPak** 1645 LEMONWOOD DR.  
SANTA PAULA, CA 93060

TITLE: HDS-27X POWER SIDE  
RAMP WELDMENT

SIZE DWG. NO. REV  
**A** 5620198 F

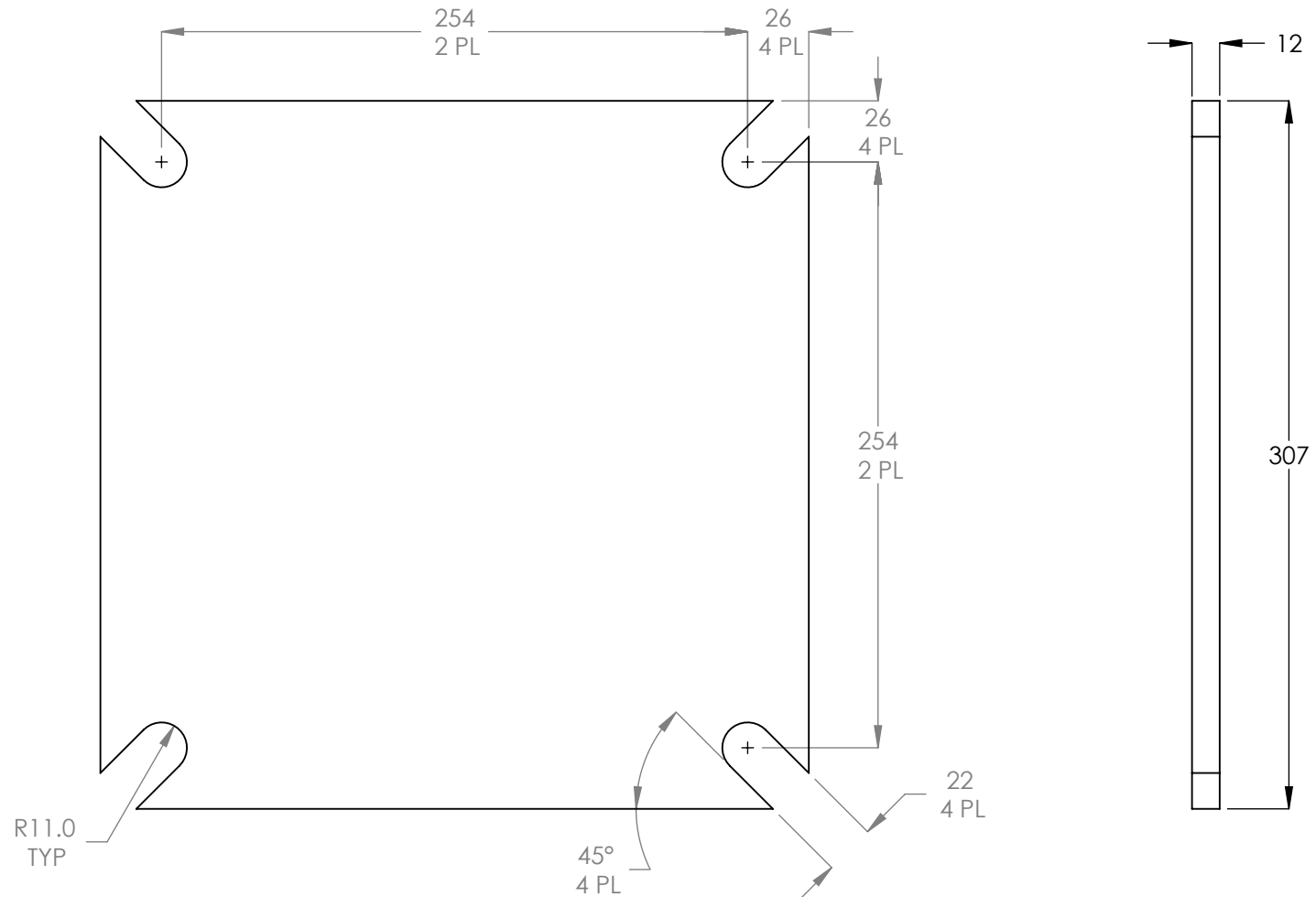
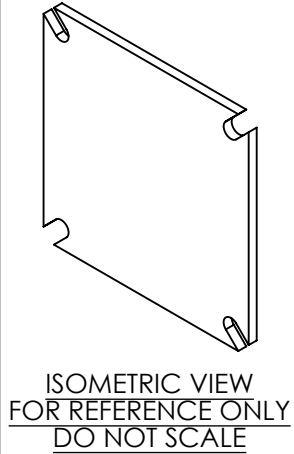
SCALE: 1:35 SHEET 1 OF 4

**NOTE: UNLESS OTHERWISE SPECIFIED.**

- BREAK AND DEBURR ALL SHARP EDGES 0.3mm
- REMOVE ALL WELD SPLATTER

NEXT ASSEMBLY  
5600141



REVISION		DATE	EDITED BY	ECO#
REV	DESCRIPTION			
A	DERIVED FROM H-111, PRODUCTION RELEASE	09/15/2008	GJZ	00241
A-001	UPDATED NEXT ASSEMBLY	07/30/2012	TM	00535
A-002	UPDATED NEXT ASSEMBLIES	06/04/2015	TM	00683
B	UPDATED TITLE TO REFLECT WHERE USED	09/17/2015	TM	00724



**NOTE: UNLESS OTHERWISE SPECIFIED.**

- BREAK AND DEBURR ALL SHARP EDGES 0.3mm
- MATERIAL:** HR ASTM A36 OR Q235 GB/T 700
- FLAME CUT PERMISSABLE

NEXT ASSEMBLY
5600350
5600351
5600697
5600698
5600978
5600980

DO NOT SCALE DRAWING		NAME		DATE		 1645 LEMONWOOD DR. SANTA PAULA, CA 93060	
DIMENSIONS ARE IN MM TOLERANCES: MACHINE TO 0. = ±1.5 0.0 = ±0.5 0.00 = ±0.13 ANGULAR: MACHINE TO 0. = ±1/2°  SURFACE FINISH 1.6 ISO Ra μm FOR MACHINED SURFACES UNLESS OTHERWISE SPECIFIED		DRAWN		GJZ 09/15/2008			
		CHECKED					
		THIRD ANGLE PROJECTION					
Y						TITLE: HDS-27/35 SERIES BASE PLATE	
		PROPRIETARY AND CONFIDENTIAL THE INFORMATION CONTAINED IN THIS DRAWING IS THE SOLE PROPERTY OF BENDPAK INC. ANY REPRODUCTION IN PART OR AS A WHOLE WITHOUT THE WRITTEN PERMISSION OF BENDPAK INC. IS PROHIBITED.					
		SIZE		DWG. NO.		REV	
		A		5730026		B	
		SCALE: 1:3				SHEET 1 OF 1	

## PART SPECIFICATION FORM

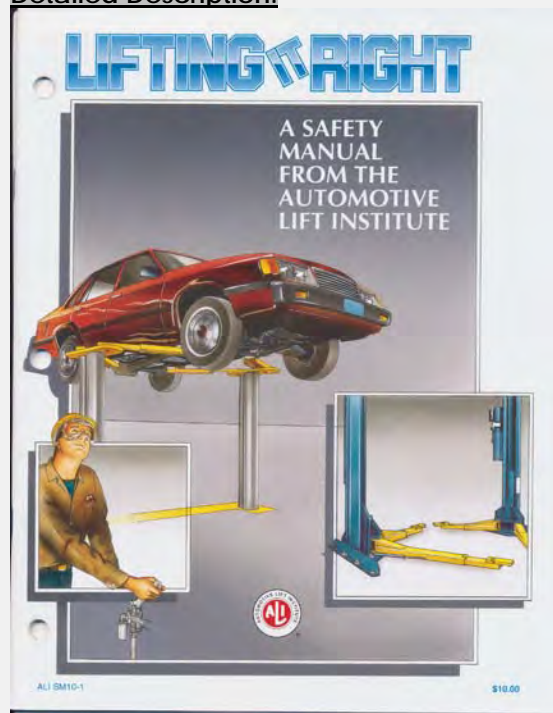
<b>BENDPAK Number:</b>	5900147
<b>MRP Description:</b>	SAFETY MANUAL ALI / SM 93-1
<b>Date:</b>	12/28/2010
<b>ECO :</b>	00431

### 1. Engineering Specification

**Application:**

ALI SAFETY MANUAL

**Detailed Description:**



### 2. Vendor Information

Approved Vendor	Vendor Part #	Contact #	Preferred Vendor
1)			

## PART SPECIFICATION FORM

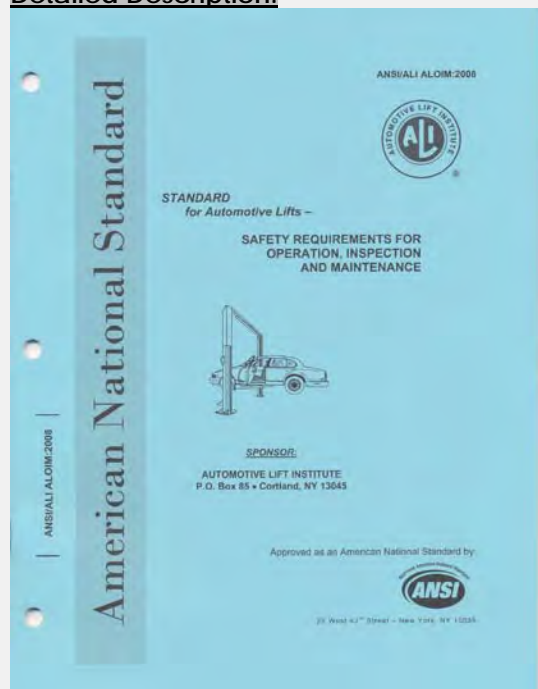
<b>BENDPAK Number:</b>	5900152
<b>MRP Description:</b>	ALIGN OIM OPERATION INSPECTION & MAINTENANCE
<b>Date:</b>	12/28/2010
<b>ECO :</b>	00431

### 1. Engineering Specification

**Application:**

ALI OPERATION INSPECTION & MAINTENANCE MANUAL

**Detailed Description:**



### 2. Vendor Information

Approved Vendor	Vendor Part #	Contact #	Preferred Vendor
1)			

## PART SPECIFICATION FORM

<b>BENDPAK Number:</b>	5900160
<b>MRP Description:</b>	HDS TRUCK SERIES INSTALLATION MANUAL
<b>Date:</b>	07/12/2013
<b>ECO :</b>	00593

### 1. Engineering Specification

#### Application:

INSTALLATION MANUAL

#### Detailed Description:

##### **WARNING**

**IMPORTANT SAFETY INSTRUCTIONS**  
**SAVE THESE INSTRUCTIONS**  
 PLEASE READ THE ENTIRE CONTENTS OF THIS MANUAL PRIOR TO INSTALLATION AND OPERATION. BY PROCEEDING WITH LIFT INSTALLATION AND OPERATION YOU AGREE THAT YOU FULLY UNDERSTAND AND COMPREHEND THE FULL CONTENTS OF THIS MANUAL. FORWARD THIS MANUAL TO ALL OPERATORS. FAILURE TO OPERATE THIS EQUIPMENT AS DIRECTED MAY CAUSE INJURY OR DEATH.  
 Manual REV F 06-12-13  
 pnh 0000100

##### INSTALLATION AND OPERATION MANUAL

**SUPER-DUTY  
 FOUR-POST LIFTS**

##### Models:

HDS-18  
 HDS-27 / HDS-27X VER B  
 HDS-35 / HDS-35X VER B  
 HDS-40 / HDS-40X VER B



##### **READ FIRST**



##### RECEIVING

The shipment should be thoroughly inspected as soon as it is received. The signed Bill of Lading is acknowledgement by the shipping carrier as receipt of this product as listed in your invoice as being in a good condition of shipment. If any of these goods listed on this Bill of Lading are missing or damaged, do not accept goods until the shipping carrier makes a notation on the freight bill of the missing or damaged goods. Do this for your own protection.

##### BE SAFE

Your new lift was designed and built with safety in mind. However, your overall safety can be increased with proper training and thoughtful operation on the part of the operator. DO NOT operate or repair this equipment without reading this manual and the important safety instructions shown inside. Keep this operation manual near the lift at all times. Make sure that **ALL USERS** read and understand this manual.

### 2. Vendor Information

Approved Vendor	Vendor Part #	Contact #	Preferred Vendor
1)			

## PART SPECIFICATION FORM

<b>BENDPAK Number:</b>	5905103
<b>MRP Description:</b>	WARNING ALI/WL 200
<b>Date:</b>	05/06/2013
<b>ECO :</b>	00593

### 1. Engineering Specification

#### Application:

ALI 4 POST SAFETY STICKER KIT

#### Detailed Description:



SIZE: 11" L x 8.5" W (279mm x 216mm)

### 2. Vendor Information

Approved Vendor	Vendor Part #	Contact #	Preferred Vendor
1)			



## PART SPECIFICATION FORM

<b>BENDPAK Number:</b>	5905151
<b>MRP Description:</b>	SAFETY TIPS CARD ALI-ST 90
<b>Date:</b>	12/28/2010
<b>ECO :</b>	00431

### 1. Engineering Specification

#### Application:

ALI SAFETY TIPS

#### Detailed Description:



### 2. Vendor Information

Approved Vendor	Vendor Part #	Contact #	Preferred Vendor
1)			



## PART SPECIFICATION FORM

<b>BENDPAK Number:</b>	5905311
<b>MRP Description:</b>	BENDPAK LABEL; 4 x 38" WHITE INK
<b>Date:</b>	05/13/2015
<b>ECO :</b>	00689

### 1. Engineering Specification

**Application:**

BENDPAK LABEL

**Detailed Description:**



**SIZE:** 38" L x 4.25" W (965mm x 108mm)

- Material: Yellow Represents Clear Adhesive PET
- Size: 4.25"W x 38"H
- Thickness: 4 Mil
- Finish: Polished
- Ink: U.V. protected, Opaque White
- Print Process: Silk Screen, 85 line-screen (Opaque White ink, clear adhesive PET will fill in blank areas.)
- Lamination: Clear-gloss over-laminate for abrasion, chemical, and ultra violet protection

### 2. Vendor Information

Approved Vendor	Vendor Part #	Contact #	Preferred Vendor
1)			

# B

# E

# N

# D

# P

# A

# K

# BendPak

**ABOVE-GROUND LIFTS**

**BP BendPak®**  
PROVIDING AUTOMOTIVE SERVICE SOLUTIONS



1645 Lemonwood Drive  
Santa Paula, CA 93060  
U.S.A.  
(805) 933-9970  
[www.bendpak.com](http://www.bendpak.com)

P/N 5905311

## PART SPECIFICATION FORM


BENDPAK Number:	5905407
MRP Description:	MAX CAP DANGER 27K
Date:	05/08/2013
ECO :	00593

### 1. Engineering Specification

**Application:**

LIFT CAPACITY STICKER

**Detailed Description:**



SIZE: 5" L x 4" W (127mm x 100mm)

P/N 5905407

### 2. Vendor Information

Approved Vendor	Vendor Part #	Contact #	Preferred Vendor
1)			

# **DANGER**

## **THE MAXIMUM LIFTING CAPACITY FOR THIS LIFT IS DESCRIBED BELOW**

### **Maximum Lifting Capacity**

**27,000 lbs. / 12,247 kg**

### **Max. Lifting Cap. / Front of Lift Center**

**13,500 lbs. / 6124 kg**

### **Max. Lifting Cap. / Rear of Lift Center**

**13,500 lbs. / 6124 kg**

**Exceeding the weight capacity of this lift can damage lift and/or property and may cause personal harm, injury or death to operators and/or bystanders. All vehicles MUST be positioned on lift with CENTER OF GRAVITY midway between adapters and/or centered on runways. Damage to lift due to overloading or misuse IS NOT covered under warranty.**

## PART SPECIFICATION FORM

<b>BENDPAK Number:</b>	5905465
<b>MRP Description:</b>	MANUFACTURER LABEL
<b>Date:</b>	05/07/2013
<b>ECO :</b>	00593

### 1. Engineering Specification

#### Application:

MANUFACTURER LABEL

#### Detailed Description:

MFD. BY BENDPAK INC.

LIFT TYPE: SURFACE MOUNT      CAPACITY: MED/HVY DTY  
 POWER: ELECTRIC/HYDRAULIC      ANCHORS: AS EQUIPPED  
 INSTALLATION - SEE OWNERS GUIDE OR CONTACT FACTORY

#### SHIPPING DAMAGE CLAIMS

WHEN THIS EQUIPMENT IS SHIPPED, TITLE PASSES TO THE PURCHASER UPON RECEIPT FROM THE CARRIER. CONSEQUENTLY, CLAIMS FOR THE MATERIAL DAMAGED IN SHIPMENT MUST BE MADE BY THE PURCHASER AGAINST THE TRANSPORTATION COMPANY AT THE TIME SHIPMENT IS RECEIVED.

PLEASE READ ALL OPERATORS/USERS MANUAL(S) PRIOR TO INSTALLATION AND OPERATION. UNDERSTAND AND COMPREHEND THE FULL CONTENTS OF EACH MANUAL(S) PRIOR TO INSTALLATION AND OPERATION. DELIVER THE MANUAL(S) TO ALL OPERATORS. FAILURE TO OPERATE THIS EQUIPMENT AS DIRECTED MAY CAUSE INJURY OR DEATH.

#### IMPORTANT NOTE:

BENDPAK LIFTS ARE SUPPLIED WITH CONCRETE FASTENERS MEETING THE CRITERIA AS PRESCRIBED BY ASTM E488 - 96(2003). LIFT BUYERS ARE RESPONSIBLE FOR ANY SPECIAL REGIONAL STRUCTURAL AND/OR SEISMIC ANCHORING REQUIREMENTS SPECIFIED BY ANY OTHER AGENCIES AND/OR CODES SUCH AS THE UNIFORM BUILDING CODE (UBC) AND/OR INTERNATIONAL BUILDING CODE (IBC).



INTERNAL BAR CODE - FOR FACTORY AUDIT ONLY 34086

BPK	STYOT	P20KVR	X18576	HVY DTY/ GVR
				832

THE MANUFACTURE, USE, SALE OR IMPORT OF THIS PRODUCT MAY BE SUBJECT TO ONE OR MORE UNITED STATES PATENTS, OR PENDING APPLICATIONS, OWNED BY BENDPAK, INC.

ENGINEERED BY BENDPAK INC USA

MADE IN CHINA

SIZE: 5.125" L x 5.125" W (130mm x 130mm)

### 2. Vendor Information

Approved Vendor	Vendor Part #	Contact #	Preferred Vendor
1)			

MFD. BY BENDPAK INC.

LIFT TYPE: SURFACE MOUNT

CAPACITY: MED/HVY DTY

POWER: ELECTRIC/HYDRAULIC

ANCHORS: AS EQUIPPED

INSTALLATION - SEE OWNERS GUIDE OR CONTACT FACTORY

**SHIPPING DAMAGE CLAIMS**

WHEN THIS EQUIPMENT IS SHIPPED, TITLE PASSES TO THE PURCHASER UPON RECEIPT FROM THE CARRIER. CONSEQUENTLY, CLAIMS FOR THE MATERIAL DAMAGED IN SHIPMENT MUST BE MADE BY THE PURCHASER AGAINST THE TRANSPORTATION COMPANY AT THE TIME SHIPMENT IS RECEIVED.

PLEASE READ ALL OPERATORS/USERS MANUAL(S) PRIOR TO INSTALLATION AND OPERATION. UNDERSTAND AND COMPREHEND THE FULL CONTENTS OF EACH MANUAL(S) PRIOR TO INSTALLATION AND OPERATION. DELIVER THE MANUAL(S) TO ALL OPERATORS. FAILURE TO OPERATE THIS EQUIPMENT AS DIRECTED MAY CAUSE INJURY OR DEATH.

**IMPORTANT NOTE:**

BENDPAK LIFTS ARE SUPPLIED WITH CONCRETE FASTENERS MEETING THE CRITERIA AS PRESCRIBED BY ASTM E488 - 96(2003). LIFT BUYERS ARE RESPONSIBLE FOR ANY SPECIAL REGIONAL STRUCTURAL AND/OR SEISMIC ANCHORING REQUIREMENTS SPECIFIED BY ANY OTHER AGENCIES AND/OR CODES SUCH AS THE UNIFORM BUILDING CODE (UBC) AND/OR INTERNATIONAL BUILDING CODE (IBC).



INTERNAL BAR CODE - FOR FACTORY AUDIT ONLY 34086

BPK

STYOT

P20KVR

X18576

HVY DTY/ GVR

832

THE MANUFACTURE, USE, SALE OR IMPORT OF THIS PRODUCT MAY BE SUBJECT TO ONE OR MORE UNITED STATES PATENTS, OR PENDING APPLICATIONS, OWNED BY BENDPAK, INC.

ENGINEERED BY BENDPAK INC USA

MADE IN CHINA

## PART SPECIFICATION FORM

<b>BENDPAK Number:</b>	5905556
<b>MRP Description:</b>	4-POST SAFETY DECAL
<b>Date:</b>	05/06/2013
<b>ECO :</b>	00593

### 1. Engineering Specification

#### Application:

4-POST SAFETY DECAL

#### Detailed Description:



SIZE: 23" L x 4" W (584mm x 100mm)

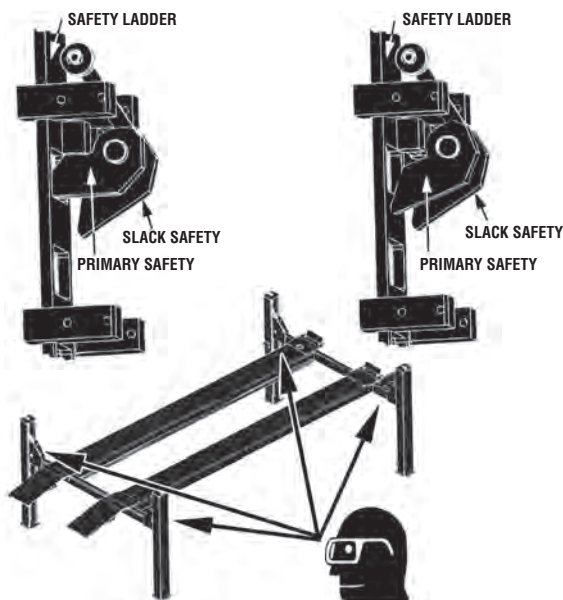
### 2. Vendor Information

Approved Vendor	Vendor Part #	Contact #	Preferred Vendor
1)			

# DANGER

**SAFETY LOCKS ENGAGED  
– OK TO PROCEED –**

**SAFETY LOCK NOT ENGAGED  
– REMAIN CLEAR –**



## **VISUALLY CONFIRM THAT ALL PRIMARY SAFETY LOCKS ARE ENGAGED BEFORE ENTERING WORK AREA.**

Suspension components used on this lift are intended to raise and lower lift only and are NOT meant to be load-holding devices. Remain clear of elevated lift unless visual confirmation is made that all primary safety locks are fully engaged and the lift is LOWERED onto the safety locks. Refer to installation/operation manual for proper safety lock procedures and/or further instruction.

# WARNING

## **WIRE ROPE INSPECTION AND MAINTENANCE**

- Lifting cables should be replaced every (3) three years or when visible signs of damage are apparent. DO NOT USE LIFT WITH DEFECTIVE OR WORN CABLES.
- Wire rope should be maintained in a well-lubricated condition at all times. Wire rope is only fully protected when each wire strand is lubricated both internal and external. Excessive wear will shorten the life of the wire rope. The factory suggests wire rope lubricant that penetrates to the core of the rope and provides long-term lubrication between each individual strand. In order to make sure that the inner layers of the rope remain well lubricated, lubrication should be carried out at intervals not exceeding three (3) months during operation.
- All sheaves and guide rollers in contact with the moving wire rope should be given regular visual checks for surface wear and lubricated to make sure that they run freely. This operation should be carried out at appropriate intervals generally not exceeding three (3) months during operation. For all sheave axles, the factory recommends standard wheel bearing grease. For all sheaves and/or guide rollers, the factory recommends 90-WT gear oil or similar heavy lubricant applied by any method including pump/spray dispensing, brush, hand and/or swabbing.

**Failure to read, understand and follow these instructions may cause death or serious injury. Read and understand these instructions before using lift.**

## **IMPORTANT OPERATION / MAINTENANCE INSTRUCTIONS - PLEASE READ**

### **TO RAISE LIFT**

- ✓ Position vehicle tires at the center of each runway.
- ✓ Set parking brake or use wheel chock to hold vehicle in position.
- ✓ Before raising vehicle, be sure all personnel are clear of lift and surrounding area. Pay careful attention to overhead clearances.
- ✓ Raise lift to desired height by pressing push button on power unit.
- ✓ Maintain visual contact with vehicle and surrounding area at all times while lowering lift.
- ✓ **STOP IMMEDIATELY** if load shifts or becomes unlevel.
- ✓ After vehicle is raised to desired height, lower lift onto the nearest safety lock. Do not allow cables to become excessively slack.
- ✓ **ALWAYS INSURE ALL PRIMARY SAFETY LOCKS ARE ENGAGED** before entering work area.

### **TO LOWER LIFT**

- ✓ Before lowering vehicle, be sure all personnel, tools and equipment are clear of lift and surrounding area.
- ✓ Raise lift by pressing **RAISE BUTTON** on power unit. Elevate lift at least two inches to allow adequate clearance for locks to clear.
- ✓ Press push button **AIR SAFETY VALVE** and **HOLD**.
- ✓ Lower vehicle by pressing power unit lowering handle until lift has descended completely.
- ✓ When lowering lift **PAY CAREFUL ATTENTION** that all personnel and objects are kept clear.
- ✓ **ALWAYS** keep a visual line of site on lift **AT ALL TIMES**.
- ✓ **ALWAYS** make sure that **ALL LOCKS** are disengaged. If one of the locks inadvertently engages on descent, lift and/or vehicle may disrupt causing personal injury or death.

### **REQUIRED MONTHLY MAINTENANCE**

- ✓ **ALWAYS** consult operation manual for factory recommended maintenance.
- ✓ Adjust lift cables to ensure lift raises level and safety locks engage simultaneously.
- ✓ Check all chain/cable connections, bolts and pins to insure proper mounting.
- ✓ Visually inspect safety locks for proper operation.
- ✓ Visually inspect concrete floor. **DO NOT USE LIFT** if concrete foundation shows signs of deterioration.
- ✓ Inspect all anchor bolts and retighten if necessary.
- ✓ Check columns for squareness and plumb.
- ✓ Inspect all bolts and/or fasteners making sure they are properly secured.
- ✓ Make a visual inspection of **ALL MOVING PARTS** and check for excessive signs of wear.
- ✓ Replace **ALL FAULTY PARTS** before lift is put back into operation.

### **WARNING**

1. **WARNING:** If cement anchor bolts are loose, or any component of the lift is found to be defective, **DO NOT USE LIFT!**
2. Never operate the lift with any person or equipment below.
3. Never exceed rated capacity.
4. Always insure safety locks are engaged before any attempt is made to work on or near vehicle.
5. Never leave lift in an elevated position unless the safety locks are engaged.
6. Do not permit electric motor to get wet! Motor damage caused by dampness is not covered under warranty.



## PART SPECIFICATION FORM


<b>BENDPAK Number:</b>	5905940
<b>MRP Description:</b>	PRODUCT DATA LABEL
<b>Date:</b>	05/06/2013
<b>ECO :</b>	00593

### 1. Engineering Specification

**Application:**

PRODUCT DATA LABEL

**Detailed Description:**



SANTA PAULA, CA USA  
 WWW.BENDPAK.COM

---

LIFT TYPE: SURFACE MOUNT CAP: MED/HVY DTY MFG. BPK SEE DATA PLATE FOR PRODUCT DETAILS  
 POWER: ELECTRIC/HYDRAULIC INSTALLATION - SEE OWNERS GUIDE OR CONTACT FACTORY

---

SAFETY INSTRUCTIONS: IF ATTACHMENTS, ACCESSORIES OR CONFIGURATION MODIFYING COMPONENTS THAT ARE LOCATED IN THE LOAD PATH, AFFECT OPERATION OF THE LIFT, AFFECT THE LIFT ELECTRICAL LISTING OR AFFECT INTENDED VEHICLE ACCOMMODATION ARE USED ON THIS LIFT AND, IF THEY ARE NOT CERTIFIED FOR USE ON THIS LIFT, THEN THE CERTIFICATION OF THIS LIFT SHALL BECOME NULL AND VOID. CONTACT THE PARTICIPANT FOR INFORMATION PERTAINING TO CERTIFIED ATTACHMENTS, ACCESSORIES OR CONFIGURATION MODIFYING COMPONENTS.

BENDPAK LIFTS ARE SUPPLIED WITH CONCRETE FASTENERS MEETING THE CRITERIA AS PRESCRIBED BY ASTM E488 - 96(2003). LIFT BUYERS ARE RESPONSIBLE FOR ANY SPECIAL REGIONAL STRUCTURAL AND/OR SEISMIC ANCHORING REQUIREMENTS SPECIFIED BY ANY OTHER AGENCIES AND/OR CODES SUCH AS THE UNIFORM BUILDING CODE (UBC) AND/OR INTERNATIONAL BUILDING CODE (IBC).

THE MANUFACTURE, USE, SALE OR IMPORT OF THIS PRODUCT MAY BE SUBJECT TO ONE OR MORE UNITED STATES PATENTS, OR PENDING APPLICATIONS, OWNED BY BENDPAK, INC.  
 DO NOT REMOVE      ENGINEERED BY BENDPAK INC. USA      MADE IN CHINA

SIZE: 2.3" L x 4.5" W (58mm x 114mm)

### 2. Vendor Information

Approved Vendor	Vendor Part #	Contact #	Preferred Vendor
1)			



SANTA PAULA, CA USA

WWW.BENDPAK.COM

PN 5905940

**LIFT TYPE: SURFACE MOUNT   CAP: MED/HVY DTY   MFG. BPK   SEE DATA PLATE FOR PRODUCT DETAILS**

**POWER: ELECTRIC/HYDRAULIC                      INSTALLATION - SEE OWNERS GUIDE OR CONTACT FACTORY**

SAFETY INSTRUCTIONS: IF ATTACHMENTS, ACCESSORIES OR CONFIGURATION MODIFYING COMPONENTS THAT ARE LOCATED IN THE LOAD PATH, AFFECT OPERATION OF THE LIFT, AFFECT THE LIFT ELECTRICAL LISTING OR AFFECT INTENDED VEHICLE ACCOMMODATION ARE USED ON THIS LIFT AND, IF THEY ARE NOT CERTIFIED FOR USE ON THIS LIFT, THEN THE CERTIFICATION OF THIS LIFT SHALL BECOME NULL AND VOID. CONTACT THE PARTICIPANT FOR INFORMATION PERTAINING TO CERTIFIED ATTACHMENTS, ACCESSORIES OR CONFIGURATION MODIFYING COMPONENTS.

BENDPAK LIFTS ARE SUPPLIED WITH CONCRETE FASTENERS MEETING THE CRITERIA AS PRESCRIBED BY ASTM E488 - 96(2003). LIFT BUYERS ARE RESPONSIBLE FOR ANY SPECIAL REGIONAL STRUCTURAL AND/OR SEISMIC ANCHORING REQUIREMENTS SPECIFIED BY ANY OTHER AGENCIES AND/OR CODES SUCH AS THE UNIFORM BUILDING CODE (UBC) AND/OR INTERNATIONAL BUILDING CODE (IBC).

THE MANUFACTURE, USE, SALE OR IMPORT OF THIS PRODUCT MAY BE SUBJECT TO ONE OR MORE UNITED STATES PATENTS, OR PENDING APPLICATIONS, OWNED BY BENDPAK, INC.

DO NOT REMOVE

ENGINEERED BY BENDPAK INC. USA

MADE IN CHINA

## PART SPECIFICATION FORM

<b>BENDPAK Number:</b>	5905953
<b>MRP Description:</b>	LABEL D (4-POST LIFTS CE)
<b>Date:</b>	12/04/2015
<b>ECO :</b>	00724

### 1. Engineering Specification

#### Application:

DATA SERIAL TAG, 4-POST LIFTS, CE

#### Detailed Description:



**BendPak** Santa Paula, CA USA  
www.bendpak.com

<b>MODEL NUMBER</b>	<b>SERIAL NUMBER</b>
<b>LIFT CAPACITY</b>	<b>DATE OF MFG.</b>
<b>ROLLING JACK MAX CAP.</b>	<b>MAX PSI / BAR</b>

**VOLTAGE**

☐ 110-240VAC, 50-60 Hz, 1 Ph   
 ☐ 208-440VAC, 50-60 Hz, 3 Ph  
☐ 208-240VAC, 50-60 Hz, 1 Ph   
 ☐ 208-440VAC, 50-60 Hz, 3 Ph

**DANGER!**  
Disconnect Power  
Before Servicing

CE ENE PM 5905953

SIZE: 3.38" L x 3.38" W  
(85.7mm x 85.7mm)

### 2. Vendor Information (Or for Reference)

Approved Vendor	Vendor Part #	Contact #	Preferred Vendor
1)			
2)			
OR BENDPAK ENGINEERING APPROVED EQUIVALENT			



Santa Paula, CA USA  
www.bendpak.com

**MODEL NUMBER**

**SERIAL NUMBER**

**LIFT CAPACITY**

**DESCRIPTION**

**ROLLING JACK MAX CAP.**

**MAX PSI / BAR**

**VOLTAGE**

☐ 110-240VAC, 50-60 Hz, 1 Ph

☐ 380-415VAC, 50-60 Hz, 3 Ph

☐ 208-240VAC, 50-60 Hz, 1 Ph

☐ 208-440VAC, 50-60 Hz, 3 Ph

**DATE OF MFG.**



**DANGER!**

Disconnect Power  
Before Servicing

WARRANTY VOID IF DATA PLATE IS REMOVED



PN 5905953



***2016***  
***CE-Approved***  
***4 Post Lifts***  
***Colors & Graphics***

***12/31/15***

**CONFIDENTIAL INFORMATION.**

You may not disclose, print, copy or disseminate this information.  
Unauthorized use is a violation of federal criminal law.

# 4 Post Lifts Product Decal Positioning



## BPK Post Branding Decal-Large\_5905311.pdf:

Material: Clear Adhesive PET

Size: 4.25"W x 38"H

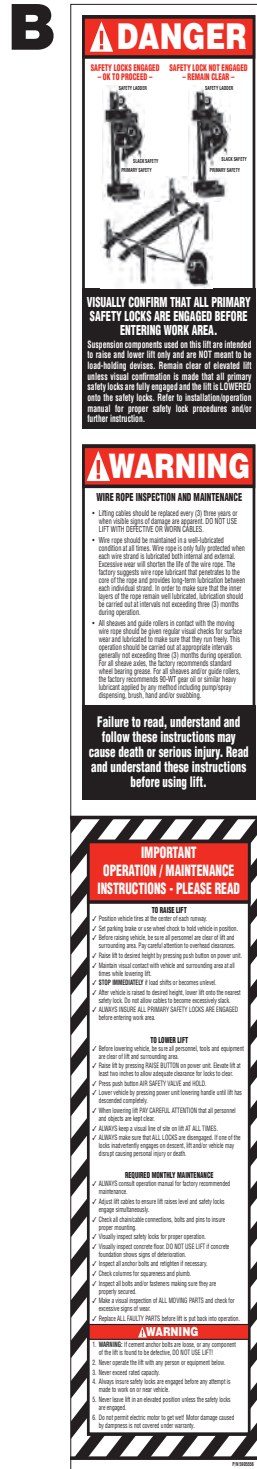
Thickness: 4 Mil

Finish: Polished

Ink: U.V. protected, Opaque White

Print Process: Silk Screen, 85 line-screen (Yellow color in file represents what should be clear PET material and SHOULD NOT print as Yellow ink. White area in file represents Opaque White ink.)

Lamination: Clear-gloss over-laminate for abrasion, chemical, and ultra violet protection



## 4\_Post\_Safety\_Decal.pdf:

Size: 4"W x 23"H

Material: White Vinyl Pressure Sensitive Adhesive

Thickness: 4 Mil

Ink: U.V. protected CMYK 2/C Process

Finish: Polished

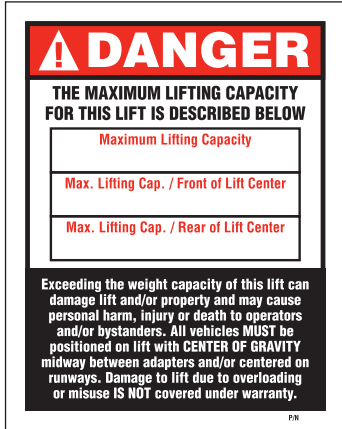
Print Process: Offset Lithography - 200 line-screen or 300 p.p.i. for digital

Lamination: Clear-gloss over-laminate for abrasion, chemical, and ultra violet protection



# 4 Post Lifts Product Decal Positioning

**\*D**



P/N 5905401 - Max Cap. Danger 7k  
P/N 5905695 - Max. Cap. Danger 7500  
P/N 5905402 - Max Cap. Danger 9k  
P/N 5905557 - Max. Cap. Danger 14K  
P/N 5905406 - Max Cap. Danger 18k  
P/N 5905407 - Max. Cap. Danger 27K  
P/N 5905408 - Max. Cap. Danger 35K  
P/N 5905409 - Max. Cap. Danger 40K

**\*Max. Cap. Danger.pdf:**

Size: 4"W x 5"H

Material: White Vinyl Pressure Sensitive Adhesive

Thickness: 4 Mil

Ink: U.V. protected CMYK 2/C Process

Finish: Polished

Print Process: Offset Lithography - 200 line-screen or 300 p.i. for digital

Lamination: Clear-gloss over-laminate for abrasion, chemical, and ultra violet protection

**\*E**



P/N 5905645 - NRTL\_Lifting\_Cap\_Label\_7K  
P/N 5905700 - NRTL\_Lifting\_Cap\_Label\_7500  
P/N 5905650 - NRTL\_Lifting\_Cap\_Label\_9k  
P/N 5905665 - NRTL\_Lifting\_Cap\_Label\_14k  
P/N 5905675 - NRTL\_Lifting\_Cap\_Label\_18k  
P/N 5905680 - NRTL\_Lifting\_Cap\_Label\_27k  
P/N 5905685 - NRTL\_Lifting\_Cap\_Label\_35K  
P/N 5905690 - NRTL\_Lifting\_Cap\_Label\_40K

**\*NRTL\_Lifting\_Cap\_Label\_.pdf:**

Size: 4.5"W x 3.25"H

Material: White Vinyl Pressure Sensitive Adhesive

Thickness: 4 Mil

Ink: U.V. protected CMYK 2/C Process

Finish: Polished

Print Process: Offset Lithography - 200 line-screen or 300 p.i. for digital

Lamination: Clear-gloss over-laminate for abrasion, chemical, and ultra violet protection

**\*DEPENDS ON LIFT MODEL AND CAPACITY**

**F**



PN 5905940

**Product\_Data\_Label\_5905940-New.pdf:**

Size: 4.5"W x 2.3"H

Material: White Vinyl Pressure Sensitive Adhesive

Thickness: 4 Mil

Ink: U.V. protected CMYK 2/C Process

Finish: Polished

Print Process: Offset Lithography - 200 line-screen or 300 p.i. for digital

Lamination: Clear-gloss over-laminate for abrasion, chemical, and ultra violet protection

**G**



PN 5905953

**2015\_Serial\_Tag-D-5905953.jpg:**

Size: 3"W x 3"H

Material: Material: 2 Mil. Matte Silver Polyester (Flex-PSE)

Print using thermal transfer printer with resin ribbon

Ink: 1 Color-Black

**H**



**ALI-Gold-Label-5905326.jpg**

**\*\*FOR ALI APPROVED LIFTS ONLY**



# 4 Post Lifts Product Decal Positioning

---

**\*\*FOR ALL APPROVED  
LIFTS ONLY**

**D, H, G, F**

**Front of Post**  
(Top to Bottom)

**E, C**

**Back of Post**  
(Top to Bottom)

**B**

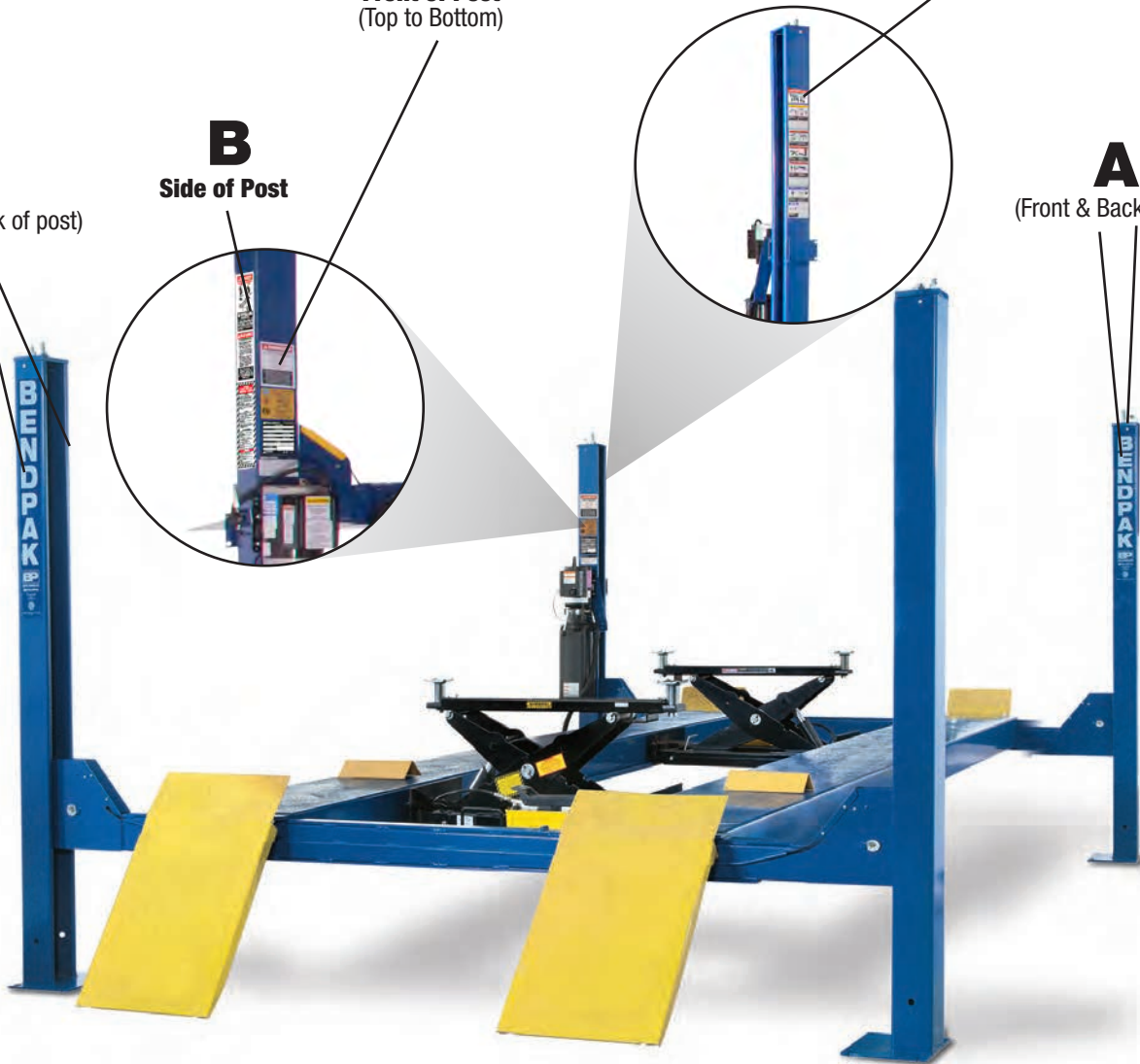
**Side of Post**

**A**

(Front & Back of post)

**A**

(Front & Back of post)





# 4 Post Lifts Packaging

<b>BP BendPak.</b> Santa Paula, CA USA www.bendpak.com	
<b>MODEL NUMBER</b>	<b>SERIAL NUMBER</b>
PN 5905285	

**Serial\_Tag\_New-2015\_Peel\_Off-5905285.jpg:**

Size: 3"W x 3"H

Material:Material: 2 Mil. Matte Silver Polyester  
(Flex-PSE)

Print using thermal transfer printer with resin ribbon

Ink: 1 Color-Black

<b>PEEL OFF INVENTORY LABEL</b>	
<b>MODEL NUMBER</b>	<b>SERIAL NUMBER</b>
PN 5905285	
<b>Do not remove back sheet of this portion to prevent from sticking completely as shown in image.</b>	





***2016***  
***NON-CE 4 Post Lifts***  
***Colors & Graphics***

***MODELS:***

<b><i>HD-9SW</i></b>	<b><i>HDS-40</i></b>
<b><i>HD-9SWX</i></b>	<b><i>HDS-40X</i></b>
<b><i>HD-14T</i></b>	<b><i>HD-9AE</i></b>

***12/31/15***

**CONFIDENTIAL INFORMATION.**

You may not disclose, print, copy or disseminate this information.  
Unauthorized use is a violation of federal criminal law.

# 4 Post Lifts Product Decal Positioning

**A**



**Total of 4**

PN 5905311

## BPK Post Branding Decal-Large\_5905311.pdf:

Material: Clear Adhesive PET

Size: 4.25"W x 38"H

Thickness: 4 Mil

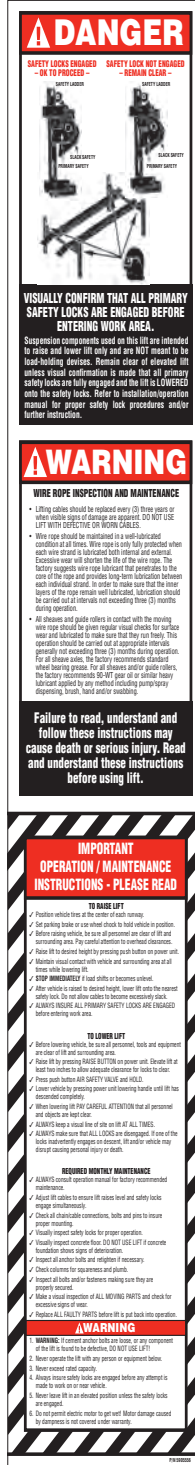
Finish: Polished

Ink: U.V. protected, Opaque White

Print Process: Silk Screen, 85 line-screen (Yellow color in file represents what should be clear PET material and SHOULD NOT print as Yellow ink. White area in file represents Opaque White ink.)

Lamination: Clear-gloss over-laminate for abrasion, chemical, and ultra violet protection

**B**



PN 5905556

## 4\_Post\_Safety\_Decal.pdf:

Size: 4"W x 23"H

Material: White Vinyl Pressure Sensitive Adhesive

Thickness: 4 Mil

Ink: U.V. protected CMYK 2/C Process

Finish: Polished

Print Process: Offset Lithography - 200 line-screen or 300 p.p.i. for digital

Lamination: Clear-gloss over-laminate for abrasion, chemical, and ultra violet protection

**C**

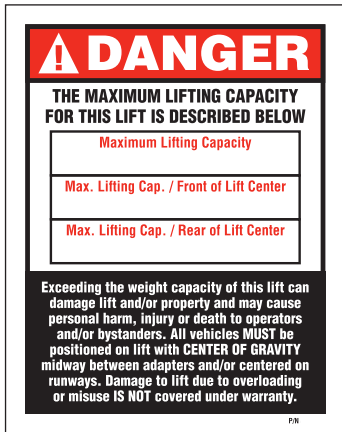


## Ali\_4\_Post\_labels.pdf:

(Order Labels from ALI)

# 4 Post Lifts Product Decal Positioning

**\*D**



P/N 5905401 - Max Cap. Danger 7k  
 P/N 5905695 - Max. Cap. Danger 7500  
 P/N 5905402 - Max Cap. Danger 9k  
 P/N 5905557 - Max. Cap. Danger 14K  
 P/N 5905406 - Max Cap. Danger 18k  
 P/N 5905407 - Max. Cap. Danger 27K  
 P/N 5905408 - Max. Cap. Danger 35K  
 P/N 5905409 - Max. Cap. Danger 40K

**\*Max. Cap. Danger.pdf:**

Size: 4"W x 5"H  
 Material: White Vinyl Pressure Sensitive Adhesive  
 Thickness: 4 Mil  
 Ink: U.V. protected CMYK 2/C Process  
 Finish: Polished  
 Print Process: Offset Lithography - 200 line-screen or 300 p.p.i. for digital  
 Lamination: Clear-gloss over-laminate for abrasion, chemical, and ultra violet protection

**\*E**



P/N 5905645 - NRTL\_Lifting\_Cap\_Label\_7K  
 P/N 5905700 - NRTL\_Lifting\_Cap\_Label\_7500  
 P/N 5905650 - NRTL\_Lifting\_Cap\_Label\_9k  
 P/N 5905665 - NRTL\_Lifting\_Cap\_Label\_14k  
 P/N 5905675 - NRTL\_Lifting\_Cap\_Label\_18k  
 P/N 5905680 - NRTL\_Lifting\_Cap\_Label\_27k  
 P/N 5905685 - NRTL\_Lifting\_Cap\_Label\_35K  
 P/N 5905690 - NRTL\_Lifting\_Cap\_Label\_40K

**\*NRTL\_Lifting\_Cap\_Label\_.pdf:**

Size: 4.5"W x 3.25"H  
 Material: White Vinyl Pressure Sensitive Adhesive  
 Thickness: 4 Mil  
 Ink: U.V. protected CMYK 2/C Process  
 Finish: Polished  
 Print Process: Offset Lithography - 200 line-screen or 300 p.p.i. for digital  
 Lamination: Clear-gloss over-laminate for abrasion, chemical, and ultra violet protection

**\*DEPENDS ON LIFT MODEL AND CAPACITY**

**F**



PN 5905940

**Product\_Data\_Label\_5905940-New.pdf:**

Size: 4.5"W x 2.3"H  
 Material: White Vinyl Pressure Sensitive Adhesive  
 Thickness: 4 Mil  
 Ink: U.V. protected CMYK 2/C Process  
 Finish: Polished  
 Print Process: Offset Lithography - 200 line-screen or 300 p.p.i. for digital  
 Lamination: Clear-gloss over-laminate for abrasion, chemical, and ultra violet protection

**G**

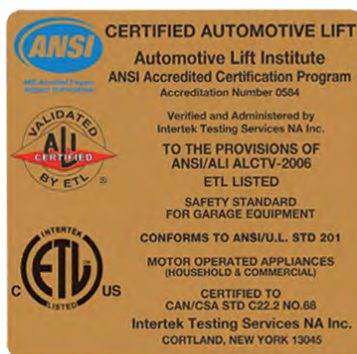


PN 5905952

**2015\_Serial\_Tag-C-5905952.jpg:**

Size: 3"W x 3"H  
 Material: Material: 2 Mil. Matte Silver Polyester (Flex-PSE)  
 Print using thermal transfer printer with resin ribbon  
 Ink: 1 Color-Black

**H**



PN 5905326

**ALI-Gold-Label-5905326.jpg**

**\*\*FOR ALI APPROVED LIFTS ONLY**

# 4 Post Lifts Product Decal Positioning

---

**\*\*FOR ALL APPROVED  
LIFTS ONLY**

**D, H, G, F**

**Front of Post**  
(Top to Bottom)

**E, C**

**Back of Post**  
(Top to Bottom)

**B**

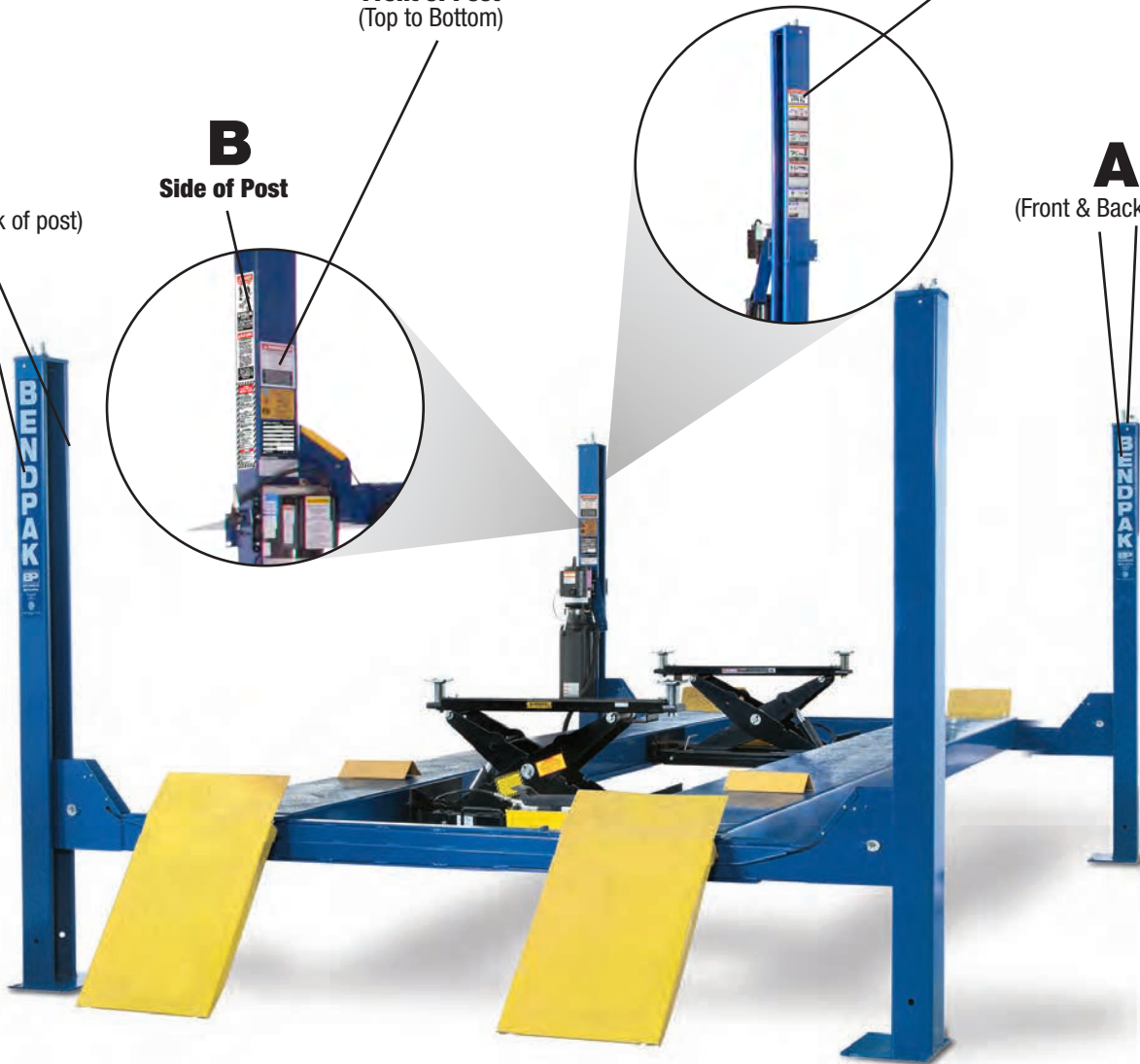
**Side of Post**

**A**

(Front & Back of post)

**A**

(Front & Back of post)





# 4 Post Lifts Packaging

<b>BP BendPak</b> Santa Paula, CA USA www.bendpak.com	
MODEL NUMBER	SERIAL NUMBER
PN 5905285	

**Serial\_Tag\_New-2015\_Peel\_Off-5905285.jpg:**

Size: 3"W x 3"H

Material:Material: 2 Mil. Matte Silver Polyester  
(Flex-PSE)

Print using thermal transfer printer with resin ribbon

Ink: 1 Color-Black

<b>PEEL OFF INVENTORY LABEL</b>	
MODEL NUMBER	SERIAL NUMBER
PN 5905285	

**Do not remove back sheet of this  
portion to prevent from sticking  
completely as shown in image.**





**BendPak®**  
PROVIDING AUTOMOTIVE SERVICE SOLUTIONS

**HDS 27 X Packaging Report**

March 15, 2011



Place the off side ramp on the shipping angles and wrap it in cardboard.



Place one cross tube on one side of the ramp.





Stack both cross tubes and strap them together.





Place two posts in front of the cross tubes as shown.







Two posts will sit in front of the cross tubes.



Start placing the safety ladders on the posts. Make sure they are wrapped sufficiently.





Put all four safety ladders on top of the posts.











Strap the ladders, posts, and cross tubes to the off side ramp.



Place the other posts on the opposite side of the ramp.





Wrap the two posts in cardboard.





Place the tire stops and top plates inside of the posts.







Make sure both posts are wrapped properly.





Set the approach ramps on top of the posts.



Strap the posts and approach ramps together to the off side ramp.





The parts box will sit in the middle of the ramp.

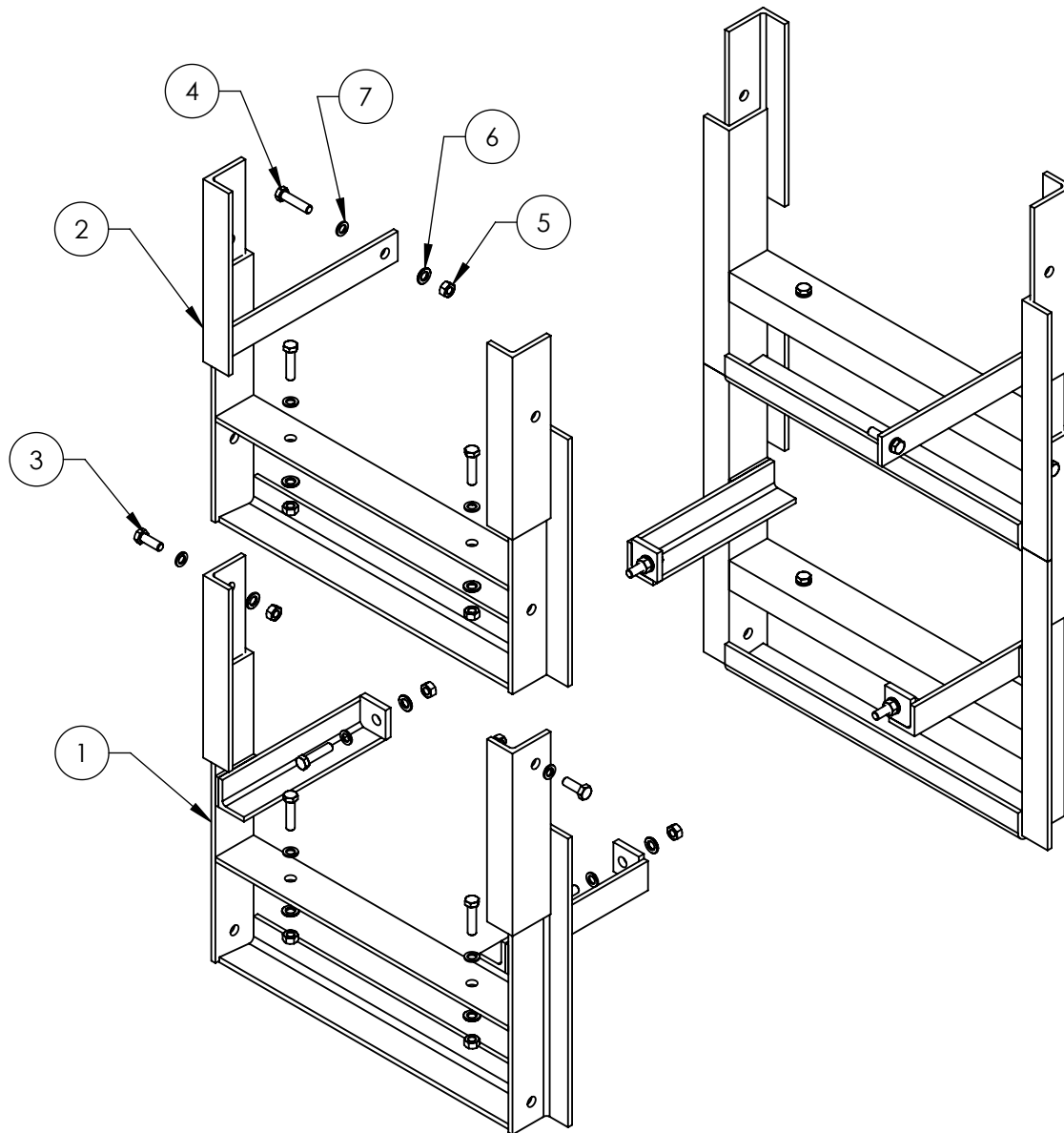




This will be the final assembly. Wrap the entire lift in cardboard and plastic.





REVISION		DATE	EDITED BY	ECO#
REV	DESCRIPTION			
A	PRODUCTION RELEASE	09/30/2014	MR	00666



**NOTE: UNLESS OTHERWISE SPECIFIED.**

1. SEE SHIPPING INSTRUCTIONS FOR FINAL PACKAGING

ITEM NO.	PART NUMBER	DESCRIPTION	QTY.	REV
1	5600877	HDS-18/27 POWERSIDE SHIPPING ANGLE	2	A
2	5600879	HDS-18/27 OFFSIDE SHIPPING ANGLE	2	A
3	5530076	HHB M12 x 1.75 x 35mm	4	-
4	5530193	HHB M12 x 1.75 x 50	14	-
5	5535354	NUT M12 x 1.75	18	-
6	5545347	WASHER M12 FLAT WASHER	18	-
7	5545201	WASHER M12 SPRING LOCK	19	-

DO NOT SCALE DRAWING		NAME	DATE
DIMENSIONS ARE IN MM		DRAWN	MR 09/30/2014
		CHECKED	
		THIRD ANGLE PROJECTION	
			
PROPRIETARY AND CONFIDENTIAL THE INFORMATION CONTAINED IN THIS DRAWING IS THE SOLE PROPERTY OF BENDPAK INC. ANY REPRODUCTION IN PART OR AS A WHOLE WITHOUT THE WRITTEN PERMISSION OF BENDPAK INC. IS PROHIBITED.		TITLE: HDS-18/27 SHOPPING ANGLE SET	
SIZE DWG. NO. A 5215420		REV A	
SCALE: 1:10		SHEET 1 OF 1	

NEXT ASSEMBLY  
SHIPPING  
ANGLE

**BendPak** 1645 LEMONWOOD DR.  
SANTA PAULA, CA 93060

## PART SPECIFICATION FORM

<b>BENDPAK Number:</b>	5530076
<b>MRP Description:</b>	HHB M12 x 1.75 x 35
<b>Date:</b>	10/07/2009
<b>Revision :</b>	B
<b>ECO :</b>	00300

### 1. Engineering Specification

**Application:**

HEX HEAD BOLT

**Detailed Description:**

Head Style	Standard Hex
Material Type	Steel
Finish	Zinc-Plated
System of Measurement	Metric
Metric Thread Size	M12
Metric Thread Pitch	1.75 mm
Length	35 mm
Head Width	19 mm
Head Height	7.5 mm
Thread Length	Fully Threaded
Thread Fit	Class 6h
Thread Direction	Right Handed
Class/Grade	CLASS 4.8/GRADE 2 OR BETTER

### 2. Vendor Information

Approved Vendor	Vendor Part #	Contact #	Preferred Vendor
1)MCMMASTER-CARR	91280A718	404-629-6500	YES
2)			
3)			

## PART SPECIFICATION FORM

<b>BENDPAK Number:</b>	5530193
<b>MRP Description:</b>	HHB M12 x 1.75 x 50
<b>Date:</b>	04/16/2010
<b>Revision :</b>	A
<b>ECO :</b>	00339

### 1. Engineering Specification

**Application:**

HEX HEAD BOLT

**Detailed Description:**

Head Style	Standard Hex
Material Type	Steel
Finish	Zinc-Plated
Grade/Class	Class 4.8 or greater
System of Measurement	Metric
Metric Thread Size	M12
Metric Thread Pitch	1.75 mm
Length	50 mm
Head Width	19 mm
Head Height	7.5 mm
Thread Length	Fully Threaded
Thread Fit	Class 6h
Thread Direction	Right Handed
Self-Locking Method	None

### 2. Vendor Information

Approved Vendor	Vendor Part #	Contact #	Preferred Vendor
1)MCMaster CARR	91280A724	404-629-6500	YES
2)			

## PART SPECIFICATION FORM

<b>BENDPAK Number:</b>	5545201
<b>MRP Description:</b>	WASHER M12 x 21mm SL
<b>Date:</b>	02/12/2008
<b>Revision :</b>	A
<b>ECO :</b>	00147

### 1. Engineering Specification

**Application:**

GENERAL FASTENER

**Detailed Description:**

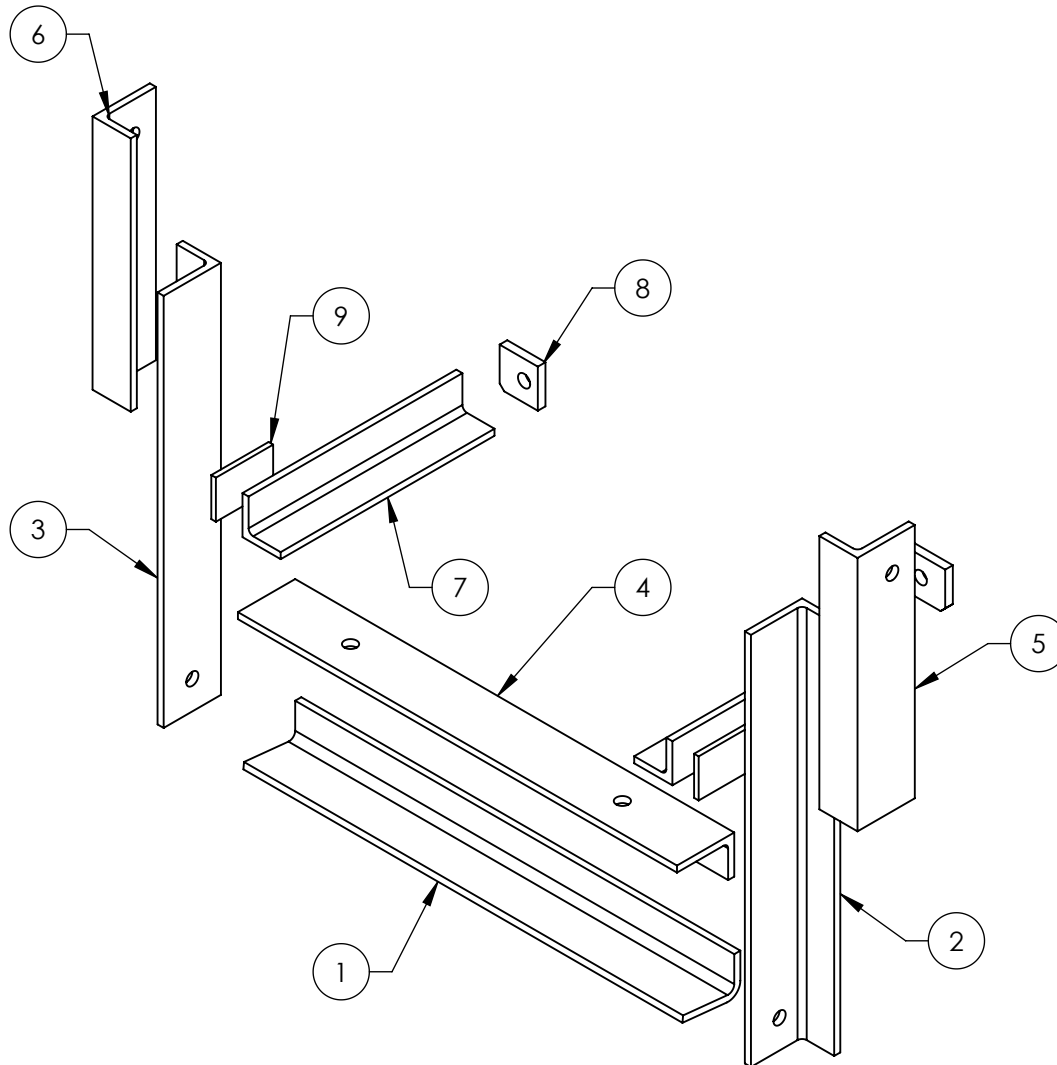
SPLIT LOCK WASHER  
 FOR USE WITH 12mm BOLT  
 21mm OD  
 ZINC PLATED

### 2. Vendor Information

Approved Vendor	Vendor #	Reference #	Preferred Vendor
1) McMaster Carr	91202A246	330 342 6100	
2)			
3)			



REVISION		DATE	EDITED BY	ECO#
REV	DESCRIPTION			
A	PRODUCTION RELEASE	09/25/2014	MR	00666



**NOTE: UNLESS OTHERWISE SPECIFIED.**

1. BREAK AND DEBURR ALL SHARP EDGES 0.3mm
2. REMOVE ALL WELD SPLATTER
3. PAINTING NOT REQUIRED

ITEM NO	PART NUMBER	DESCRIPTION	QTY	REV
1	5781029	HDS-18/27 SHIPPING ANGLE, BOTTOM ANGLE	1	A
2	5781027	HDS-18/27 POWERSIDE SHIPPING ANGLE, SIDE ANGLE LH	1	A
3	5781028	HDS-18/27 POWERSIDE SHIPPING ANGLE, SIDE ANGLE RH	1	A
4	5781030	HDS-18/27 SHIPPING ANGLE, MID ANGLE	1	A
5	5781025	HDS-18/27 POWERSIDE SHIPPING ANGLE, TOP ANGLE LH	1	A
6	5781026	HDS-18/27 POWER SHIPPING ANGLE, TOP ANGLE RH	1	A
7	5781031	HDS-18/27 POWERSIDE SHIPPING ANGLE, SIDE ARM ANGLE	2	A
8	5781032	HDS-18/27 SHIPPING ANGLE BOLT CONNECTOR	2	A
9	5781033	HDS-18/27 SHIPPING ANGLE SPACER	2	A

DO NOT SCALE DRAWING

DIMENSIONS ARE IN MM  
TOLERANCES:  
0. = ±1.5  
0.0 = ±0.5

ANGULAR: 0. = ±2°  
SURFACE FINISH 1.6 ISO Ra µm  
FOR MACHINED SURFACES  
UNLESS OTHERWISE SPECIFIED

NEXT ASSEMBLY  
5215420

NAME DATE  
DRAWN MR 09/25/2014  
CHECKED

THIRD ANGLE PROJECTION



PROPRIETARY AND CONFIDENTIAL  
THE INFORMATION CONTAINED IN THIS DRAWING IS  
THE SOLE PROPERTY OF BENDPAK INC. ANY  
REPRODUCTION IN PART OR AS A WHOLE WITHOUT  
THE WRITTEN PERMISSION OF BENDPAK INC. IS  
PROHIBITED.

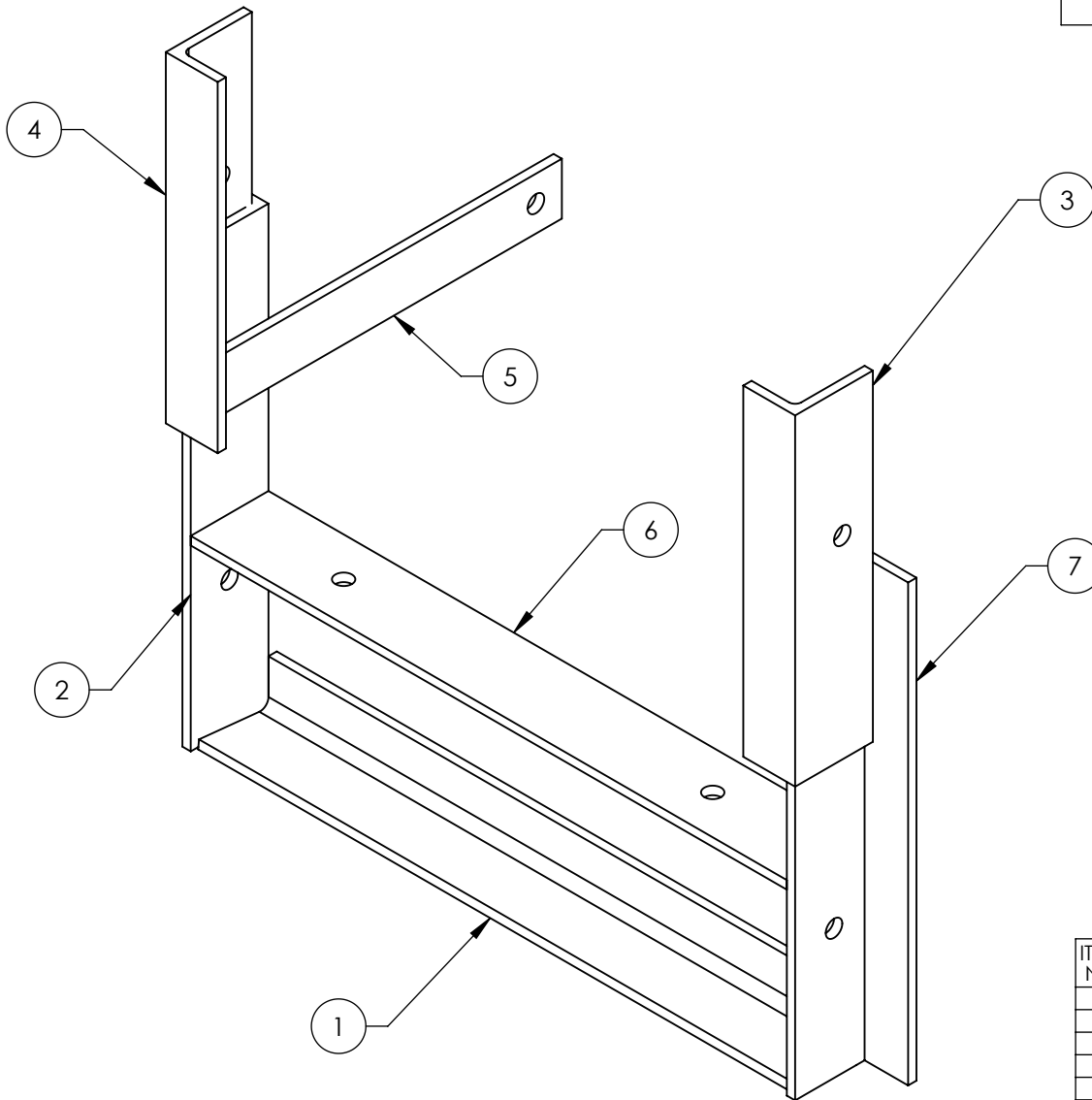
**BendPak** 1645 LEMONWOOD DR.  
SANTA PAULA, CA 93060

TITLE: HDS-18/27 POWERSIDE  
SHIPPING ANGLE

SIZE DWG. NO. REV  
**A** 5600877 A

SCALE: 1:7 SHEET 1 OF 2

REVISION		DATE	EDITED BY	ECO#
REV	DESCRIPTION			
A	PRODUCTION RELEASE	09/30/2014	MR	00666



**NOTE: UNLESS OTHERWISE SPECIFIED.**

- BREAK AND DEBURR ALL SHARP EDGES 0.3mm
- REMOVE ALL WELD SPLATTER
- PAINTING NOT REQUIRED

ITEM NO	PART NUMBER	DESCRIPTION	QTY	REV
1	5781029	HDS-18/27 SHIPPING ANGLE, BOTTOM ANGLE	1	A
2	5781021	HDS-18/27 OFFSIDE SHIPPING ANGLE, SIDE ANGLE RH	1	A
3	5781022	HDS18/27 OFFSIDE SHIPPING ANGLE, TOP SIDE ANGLE LH	1	A
4	5781023	HDS-18/27 OFFSIDE SHIPPING ANGLE, TOP ANGLE RH	1	A
5	5781024	HDS-18/27 OFFSIDE SHIPPING ANGLE, SIDE ARM RH	1	A
6	5781030	HDS-18/27 SHIPPING ANGLE, MID ANGLE	1	A
7	5781020	HDS-18/27 OFFSIDE SHIPPING ANGLE TOP ANGLE LH	1	A

DO NOT SCALE DRAWING		NAME	DATE
DRAWN		MR	09/26/2014
CHECKED			
THIRD ANGLE PROJECTION			
DIMENSIONS ARE IN MM TOLERANCES: 0. = ±1.5 0.0 = ±0.5  ANGULAR: 0. = ±2°  SURFACE FINISH 1.6 ISO Ra µm FOR MACHINED SURFACES UNLESS OTHERWISE SPECIFIED		<b>BendPak</b> 1645 LEMONWOOD DR. SANTA PAULA, CA 93060	
TITLE: HDS-18/27 OFFSIDE SHIPPING ANGLE  SIZE DWG. NO. A 5600879  SCALE: 1:5		REV A SHEET 1 OF 2	

NEXT ASSEMBLY  
5215420

PROPRIETARY AND CONFIDENTIAL  
THE INFORMATION CONTAINED IN THIS DRAWING IS  
THE SOLE PROPERTY OF BENDPAK INC. ANY  
REPRODUCTION IN PART OR AS A WHOLE WITHOUT  
THE WRITTEN PERMISSION OF BENDPAK INC. IS  
PROHIBITED.