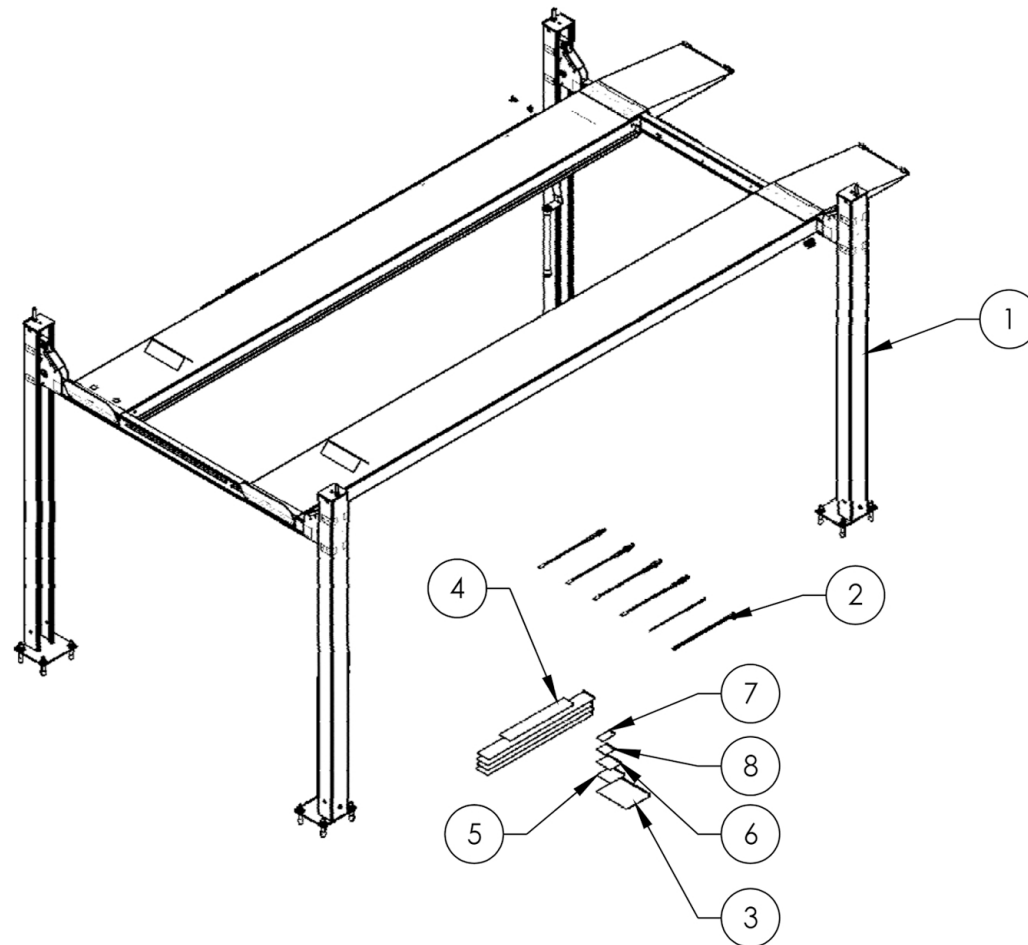


# Service Manual

## Service Parts & Diagrams

# HD-9XW

**BendPak SKU 5260518**  
**HD-9XW Four-Post Car Lift**  
**Version L**  
**06/06/2016**



This guide is a troubleshooting reference used for maintaining and servicing your BendPak product. It provides comprehensive information on identifying serviceable parts and components and assists in troubleshooting problems and performing assembly/disassembly procedures.



#### **BendPak, Inc. Corporate Office**

1645 Lemonwood Drive  
Santa Paula, CA 93060 USA  
Toll Free US/Canada: 1-800-253-2363  
Fax: 1-805-933-9160  
info@bendpak.com

#### **Customer Service Desk / Warranty**

Customer Service Representatives  
Office Tel: 1-805-933-9970  
Toll Free US/Canada: 1-800-253-2363  
Fax: 1-805-933-9160  
customerservice@bendpak.com

#### **Parts Orders**

Customer Service Representatives  
Office Tel: 1-805-933-9970  
Toll Free US/Canada: 1-800-253-2363  
Fax: 1-805-933-9160  
parts@bendpak.com

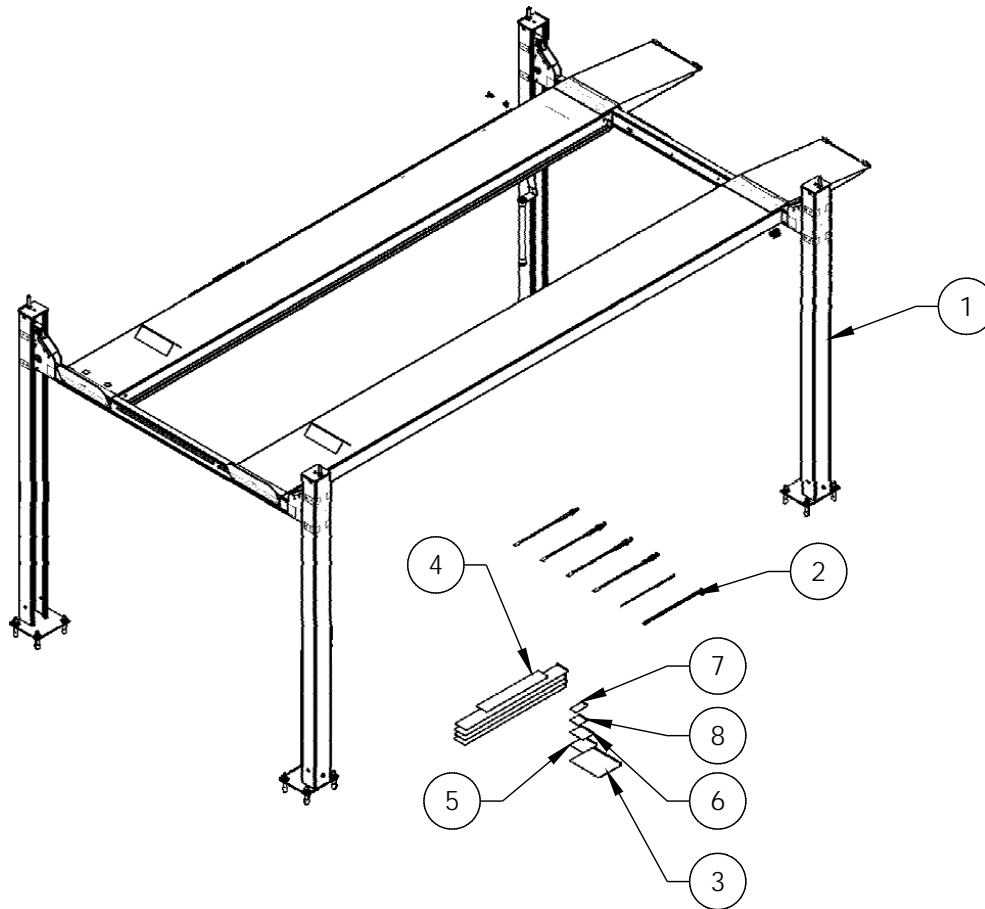
#### **Domestic Sales & Service**

USA Sales Representatives  
Office Tel: 1-805-933-9970  
Toll Free US/Canada: 1-800-253-2363  
Fax: 1-805-933-9160  
sales@bendpak.com

#### **International Sales & Service**

Office Tel: 1-805-933-9970  
Exports Department: 1-805-933-9970 Ext. 192  
Toll Free US/Canada: 1-800-253-2363  
Fax: 1-805-933-9160  
bpkexports@bendpak.com



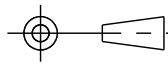
REVISION				
REV	DESCRIPTION	DATE	EDITED BY	ECO#
C	ADDED 5905103, 5905200, 5905402, 5905465, 5905940, AND 5930605, UPDATED BOM REVISIONS	08/13/2015	TM	00683
D	REMOVED 5930605, ADDED 5905952 UPDATED BOM REVISIONS	11/25/2015	JM	00740
E	REPLACED 5905952 WITH 5905953, UPDATED BOM REVISIONS	12/30/2015	JM	00741

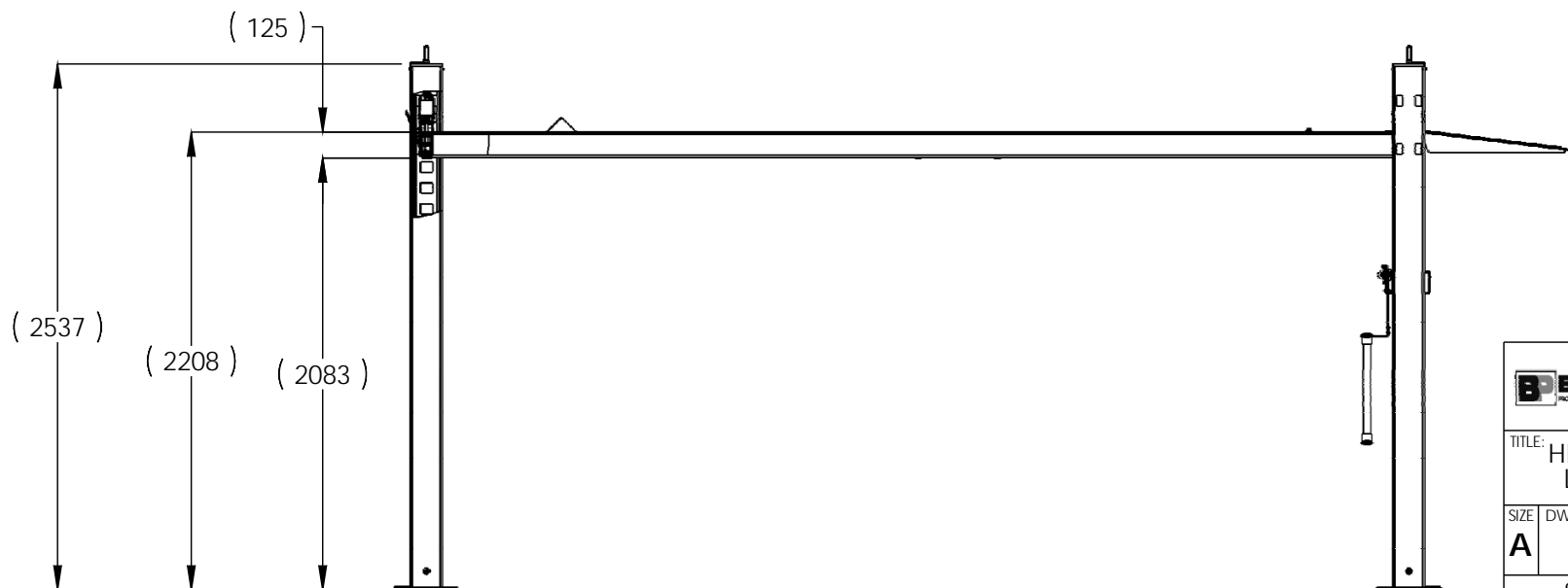
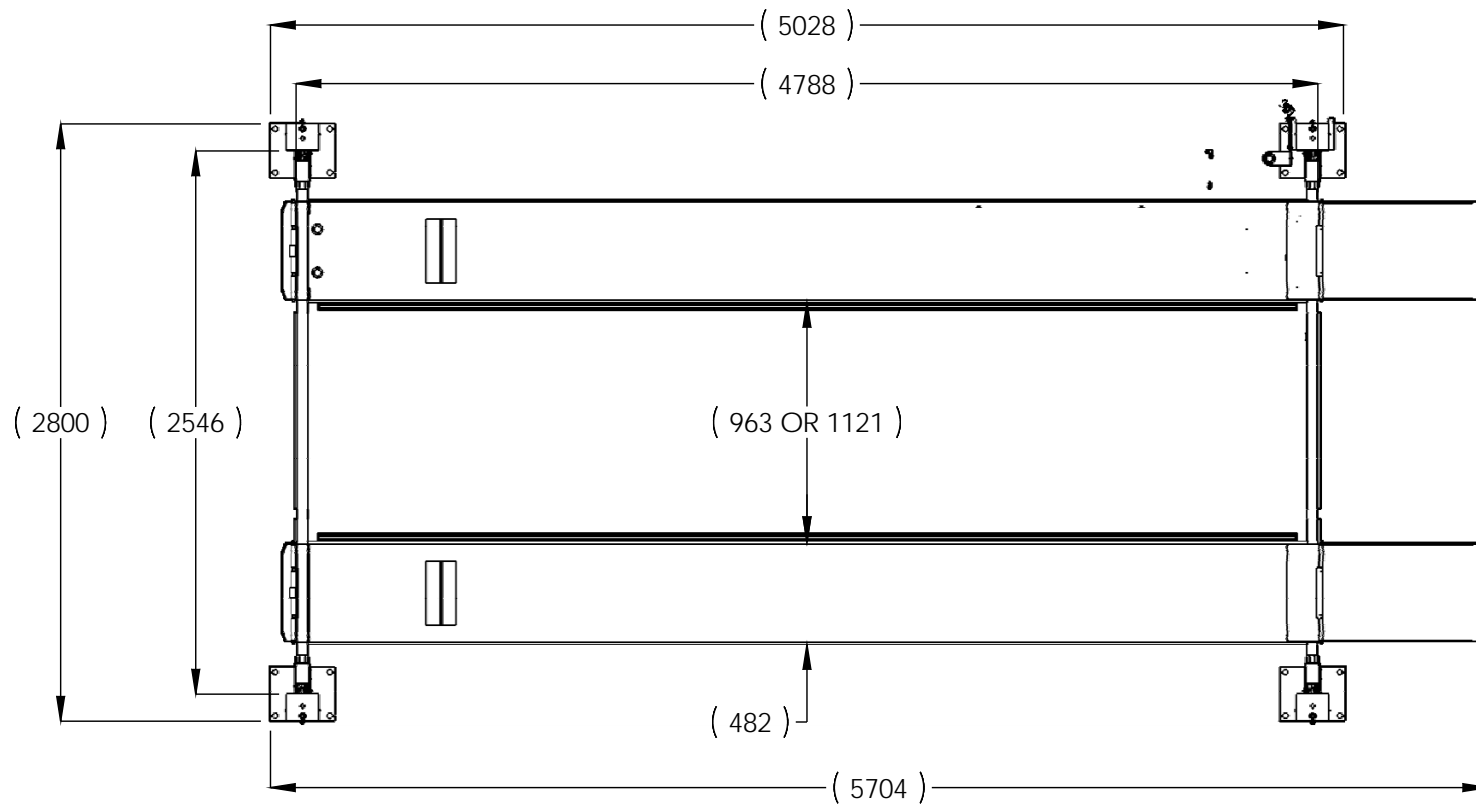


**NOTE: UNLESS OTHERWISE SPECIFIED.**

1. SEE SHIPPING INSTRUCTIONS FOR FINAL PACKAGING
2. ALL LABELS TO BE APPLIED TO POSTS AFTER PAINTING.
3. SEE ATTACHED LABEL PLACEMENT SHEET

ITEM NO.	PART NUMBER	DESCRIPTION	QTY.	REV
1	5245381	HD-9XW LIFT SUPERSTRUCTURE	1	E
2	5250168	PARTS BOX HD-9XW	1	E
3	5905103	WARNING ALI/WL 200	1	--
4	5905200	4 POST DECAL KIT, LESS ALI	1	B
5	5905465	MANUFACTURER LABEL	1	--
6	5905402	MAX CAP DANGER	1	--
7	5905940	PRODUCT DATA LABEL	1	--
8	5905953	SERIAL NUMBER INTERIOR TAG PLATE	1	--

DO NOT SCALE DRAWING		NAME	DATE	 1645 LEMONWOOD DR. SANTA PAULA, CA 93060
DRAWN		TM	08/12/2014	
CHECKED		-	-	
DIMENSIONS ARE IN MM  		THIRD ANGLE PROJECTION		TITLE: HD-9XW PRODUCTION LIFT VER L (CE CERT)
				SIZE DWG. NO.
		PROPRIETARY AND CONFIDENTIAL THE INFORMATION CONTAINED IN THIS DRAWING IS THE SOLE PROPERTY OF BENDPAK INC. ANY REPRODUCTION IN PART OR AS A WHOLE WITHOUT THE WRITTEN PERMISSION OF BENDPAK INC. IS PROHIBITED.		REV
		A 5260518		E
SCALE: 1:50				SHEET 1 OF 2



**BendPak** 1645 LEMONWOOD DR.  
SANTA PAULA, CA 93060

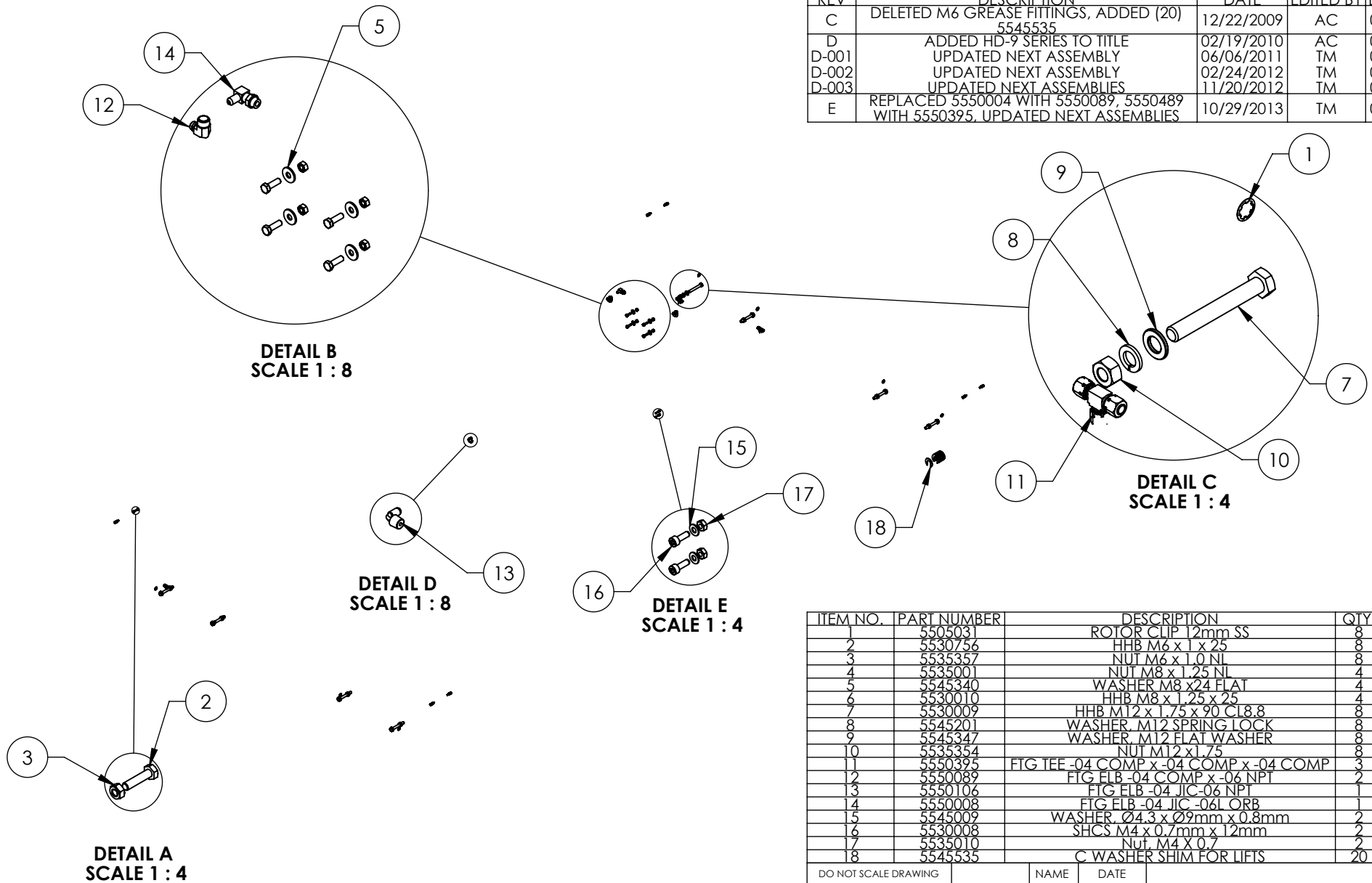
TITLE: HD-9XW PRODUCTION  
LIFT VER L (CE CERT)

SIZE	DWG. NO.	REV
<b>A</b>	5260518	E



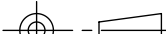
SCALE: 1:35

SHEET 2 OF 2

REVISION				
REV	DESCRIPTION	DATE	EDITED BY	ECO#
C	DELETED M6 GREASE FITTINGS, ADDED (20) 5545535	12/22/2009	AC	00326
D	ADDED HD-9 SERIES TO TITLE	02/19/2010	AC	00333
D-001	UPDATED NEXT ASSEMBLY	06/06/2011	TM	00464
D-002	UPDATED NEXT ASSEMBLY	02/24/2012	TM	00501
D-003	UPDATED NEXT ASSEMBLIES	11/20/2012	TM	00562
E	REPLACED 5550004 WITH 5550089, 5550489 WITH 5550395, UPDATED NEXT ASSEMBLIES	10/29/2013	TM	00593



ITEM NO.	PART NUMBER	DESCRIPTION	QTY.	REV
1	5505031	ROTOR CLIP 12mm SS	8	-
2	5530756	HHB M6 x 1 x 25	8	-
3	5535357	NUT M6 x 1.0 NL	8	-
4	5535001	NUT M8 x 1.25 NL	4	A
5	5545340	WASHER M8 x 24 FLAT	4	-
6	5530010	HHB M8 x 1.25 x 25	4	B
7	5530009	HHB M12 x 1.75 x 90 CL8.8	8	-
8	5545201	WASHER M12 SPRING LOCK	8	-
9	5545347	WASHER M12 FLAT WASHER	8	-
10	5535354	NUT M12 x 1.75	8	-
11	5550395	FTG TEE -04 COMP x -04 COMP x -04 COMP	3	-
12	5550089	FTG ELB -04 COMP x -06 NPT	2	-
13	5550106	FTG ELB -04 JIC-06 NPT	1	-
14	5550008	FTG ELB -04 JIC-06L ORB	1	-
15	5545009	WASHER Ø4.3 x Ø9mm x 0.8mm	2	-
16	5530008	SHCS M4 x 0.7mm x 12mm	2	-
17	5535010	Nut M4 x 0.7	2	-
18	5545535	C WASHER SHIM FOR LIFTS	20	-

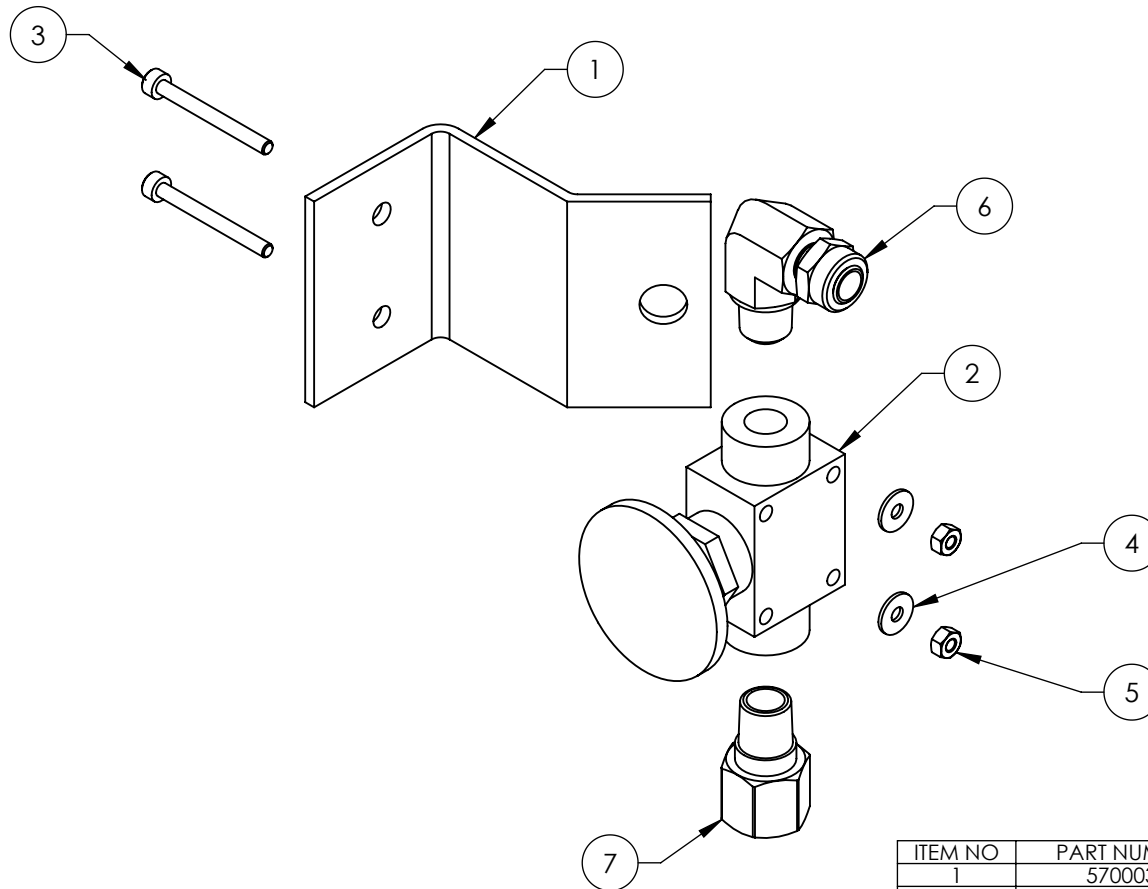
DO NOT SCALE DRAWING		NAME	DATE	 <b>BendPak.</b> 1645 LEMONWOOD DR. HICKORY AUTOMOTIVE SERVICE SOURCES SANTA PAULA, CA 93060		
DIMENSIONS ARE IN MM		DRAWN	AC			08/08/2008
		CHECKED				
		THIRD ANGLE PROJECTION				
						
MATERIAL: ---		<p><b>PROPRIETARY AND CONFIDENTIAL</b></p> <p>THE INFORMATION CONTAINED IN THIS DRAWING IS THE SOLE PROPERTY OF <b>BENDPAK INC.</b>, ANY REPRODUCTION IN PART OR AS A WHOLE WITHOUT THE WRITTEN PERMISSION OF <b>BENDPAK INC.</b> IS PROHIBITED.</p>				
SIZE: ---						
		TITLE:			HD-7/9 SERIES PARTS BAG	
		SIZE DWG. NO.			REV	
		A 5174092			E	
		SCALE: 1:30			SHEET 1 OF 1	

**NOTE: UNLESS OTHERWISE SPECIFIED.**



1. SEE SHIPPING INSTRUCTIONS FOR FINAL PACKAGING

NEXT ASSEMBLY
5250164
5250167
5250168
5250169
5250184
5250185
5250187
5250188
5250189

REVISION				
REV	DESCRIPTION	DATE	EDITED BY	ECO#
D	UPDATED NEXT ASSEMBLY, ADDED 5550486	02/24/2010	AC	00333
D-001	UPDATED NEXT ASSEMBLY	01/21/2011	TM	00439
D-010	UPDATED NEXT ASSEMBLIES	07/24/2013	TM	00611
E	REPLACED 5550481 WITH 5550087	10/29/2013	TM	00593
F	REPLACED 5590240 WITH 5590175, UPDATED NEXT ASSEMBLIES	05/05/2015	MR	00683



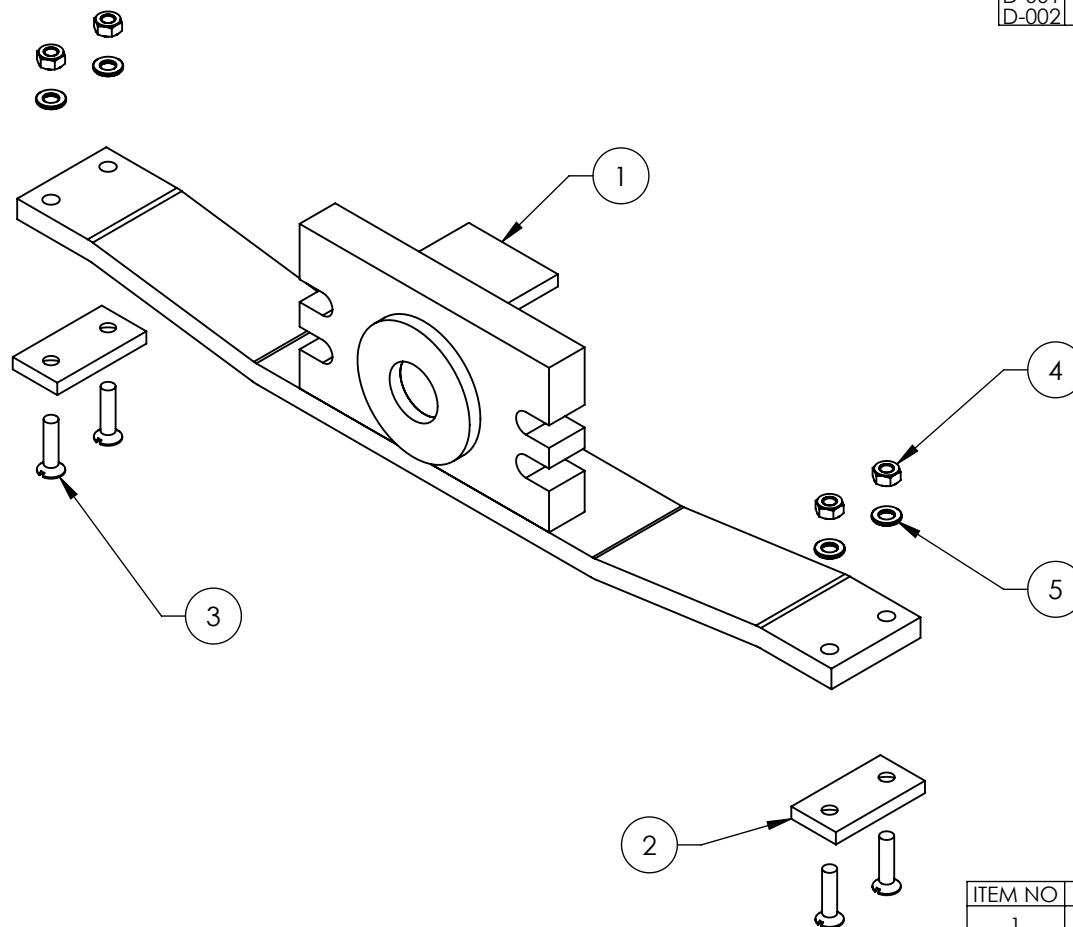
ITEM NO	PART NUMBER	DESCRIPTION	QTY	REV
1	5700031	ZERO ANGLE MTG BRACKET	1	C
2	5590175	PUSH BUTTON AIR VALVE	1	B
3	5530043	SHCS M3 x 0.5 x 30	2	-
4	5545024	WASHER M3 x 9mm	2	-
5	5535020	NUT M3 x 0.5 NL	2	-
6	5550087	FTG ELB -04 COMP x -02 NPT	1	-
7	5550486	FTG NPL -02 NPT x -04 F NPT	1	-

DO NOT SCALE DRAWING		NAME	DATE	BendPak. 1645 LEMONWOOD DR. MOVING AUTOMOTIVE SERVICE SOURCE SANTA PAULA, CA 93060	
DIMENSIONS ARE IN MM 		DRAWN	AC	3/14/2008	
		CHECKED	CA	09/02/2015	
		THIRD ANGLE PROJECTION 			
		TITLE: PUSH BUTTON AIR ASSEMBLY			
		SIZE DWG. NO.		REV	
		A 5215096		F	
		PROPRIETARY AND CONFIDENTIAL THE INFORMATION CONTAINED IN THIS DRAWING IS THE SOLE PROPERTY OF BENDPAK INC. ANY REPRODUCTION IN PART OR AS A WHOLE WITHOUT THE WRITTEN PERMISSION OF BENDPAK INC. IS PROHIBITED.			SHEET 1 OF 1
		SCALE: 2:3			



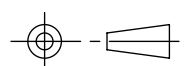
**NOTE: UNLESS OTHERWISE SPECIFIED.**

1. ASSEMBLE ITEMS AS SHOWN

REVISION				
REV	DESCRIPTION	DATE	EDITED BY	ECO#
B	UPDATED BOM REVISIONS, UPDATED NEXT ASSEMBLY	11/14/2008	AC	00174
C	UPDATED BOM REVISION	04/22/2010	TM	00351
D	UPDATED TITLE TO REFLECT WHERE USED, UPDATED BOM REVISIONS	06/10/2010	AC	00366
D-001	UPDATED NEXT ASSEMBLY	01/20/2011	TM	00439
D-002	UPDATED NEXT ASSEMBLY	06/06/2011	TM	00464



ITEM NO	PART NUMBER	DESCRIPTION	QTY	REV
1	5600901	HD-7500/9 SERIES CYLINDER FLANGE ARM WELDMENT	1	D
2	5715090	CYL. FLANGE ARM SLIDE	2	A
3	5530069	FHS M6 x 1.0 x 25	4	-
4	5535357	NUT M6 x 1.0 NL	4	-
5	5545005	M6 FLAT WASHER	4	-

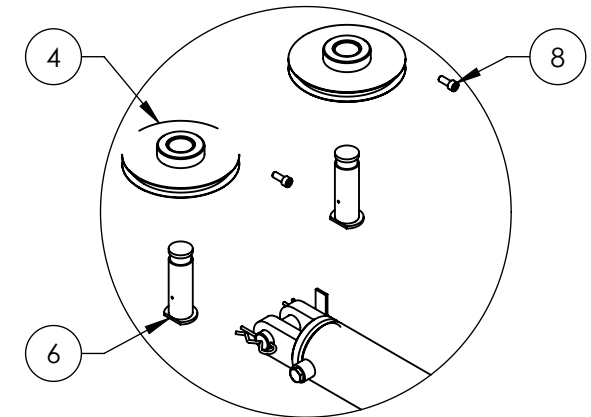
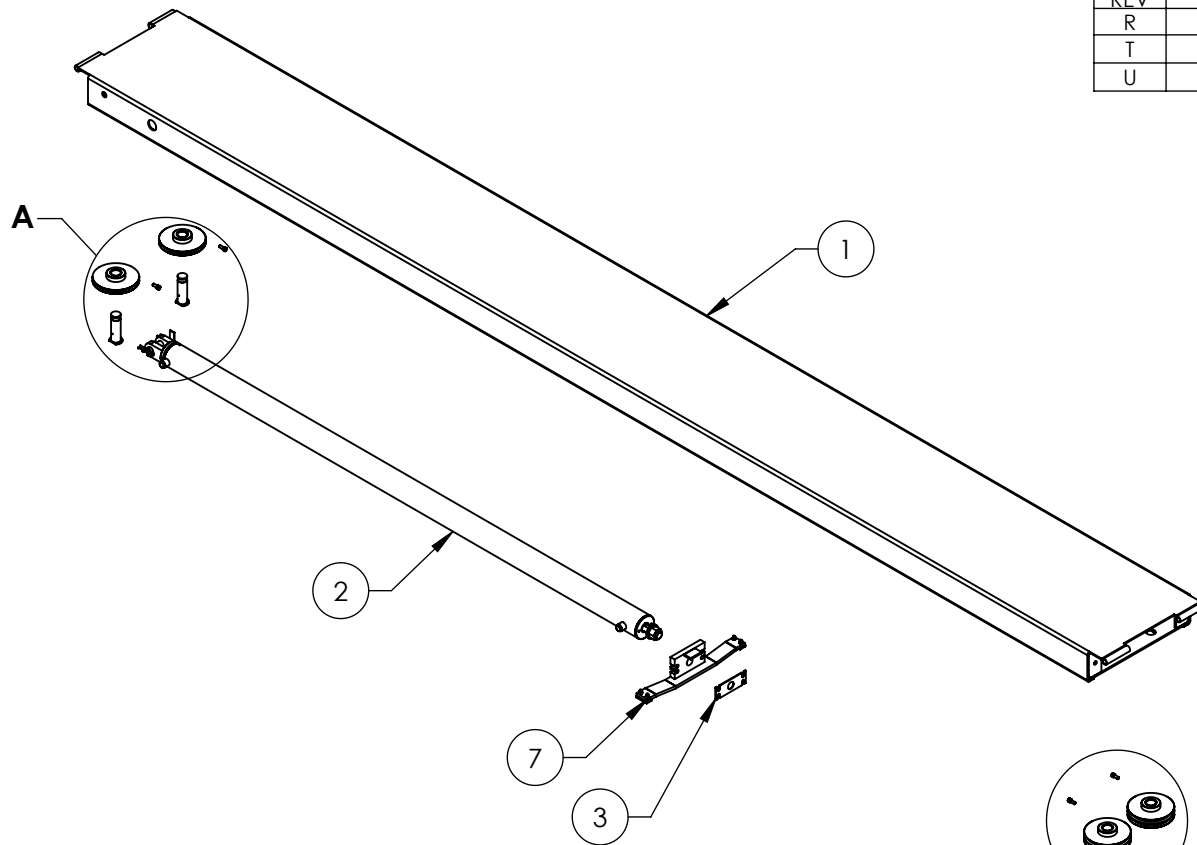
DO NOT SCALE DRAWING		NAME		DATE		 <b>BendPak.</b> 1645 LEMONWOOD DR. SANTA PAULA, CA 93060	
DIMENSIONS ARE IN MM		DRAWN		AC		08/21/2008	
		CHECKED		MT		07/06/2011	
		THIRD ANGLE PROJECTION					
		TITLE: HD-7500/9 CYLINDER FLANGE ARM ASSEMBLY					
		SIZE DWG. NO.					REV
MATERIAL: ---		<b>A</b> 5215129					<b>D</b>
SIZE: ---		SCALE: 1:3					
PROPRIETARY AND CONFIDENTIAL THE INFORMATION CONTAINED IN THIS DRAWING IS THE SOLE PROPERTY OF BENDPAK INC. ANY REPRODUCTION IN PART OR AS A WHOLE WITHOUT THE WRITTEN PERMISSION OF BENDPAK INC. IS PROHIBITED.						SHEET 1 OF 1	

NEXT ASSEMBLY
5215190
5215191
5215192
5215198
5215512
5215525

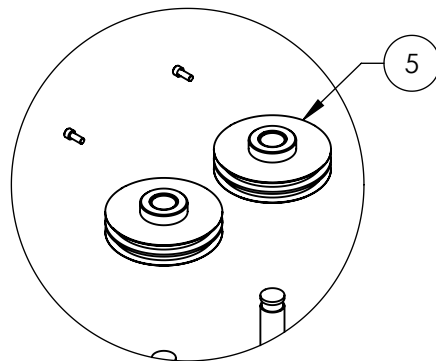
**NOTE: UNLESS OTHERWISE SPECIFIED.**

1. ASSEMBLE ITEMS AS SHOWN

REVISION				
REV	DESCRIPTION	DATE	EDITED BY	ECO#
R	REMOVED 5535026, 5505350, 5545031	01/14/2015	MR	00675
T	UPDATED BOM REVISION	04/28/2015	MR	00683
U	REMOVED (4) 5550025	11/25/2015	JM	00740



**DETAIL A  
SCALE 1 : 10**



**DETAIL B  
SCALE 1 : 10**

ITEM NO	PART NUMBER	DESCRIPTION	QTY	REV
1	5600192	HD-7500BLX/9STX/ 9SWX/9XL/9XW POWER SIDE WELDMENT	1	J
2	5502166	CYLINDER ASSEMBLY Ø3.0 x 82	1	G
3	5731309	CABLE RETAINER PLATE	1	A
4	5215122	HD-7/7500/9 SERIES SINGLE SHEAVE ROLLER ASSEMBLY	2	D
5	5215123	HD-7/7500/9 SERIES TWIN SHEAVE ASSEMBLY	2	D
6	5600900	HD-7/7500/9 SERIES RAMP SHEAVE SHAFT WELDMENT	4	D
7	5215129	HD-7500/9 CYLINDER FLANGE ARM ASSEMBLY	1	D
8	5530773	SHCS M8x1.25x20mm L	4	-

DO NOT SCALE DRAWING

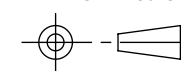
NAME	DATE
DRAWN AC	10/15/2008
CHECKED CA	09/01/2015

**BendPak** 1645 LEMONWOOD DR.  
SANTA PAULA, CA 93060

DIMENSIONS ARE IN MM



THIRD ANGLE PROJECTION



TITLE:  
**HD-7500BLX/9STX/9SWX/9XW  
POWER SIDE RAMP ASSEMBLY**

SIZE DWG. NO. REV

**A** 5215192 U

SCALE: 1:25

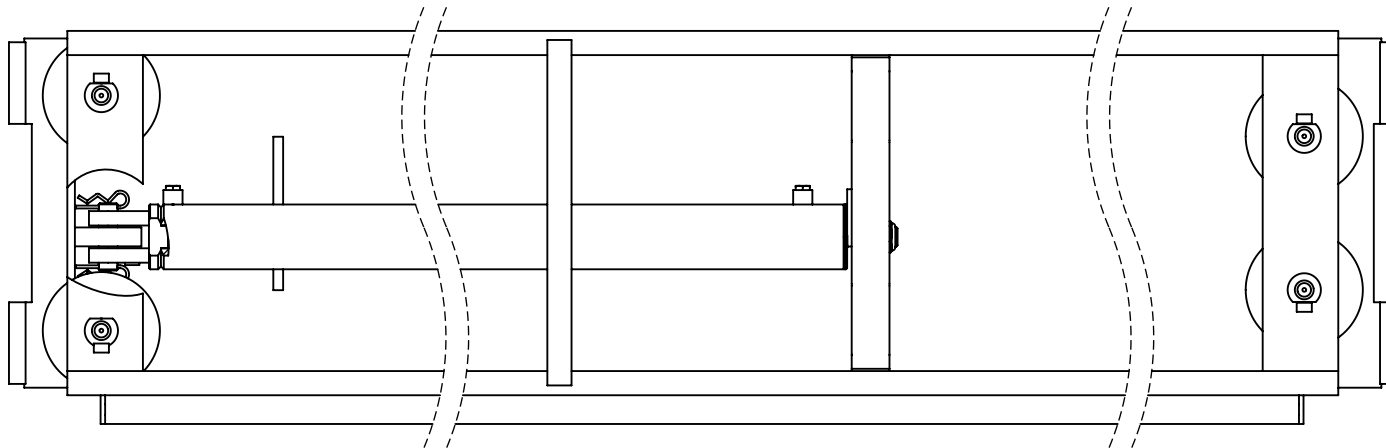
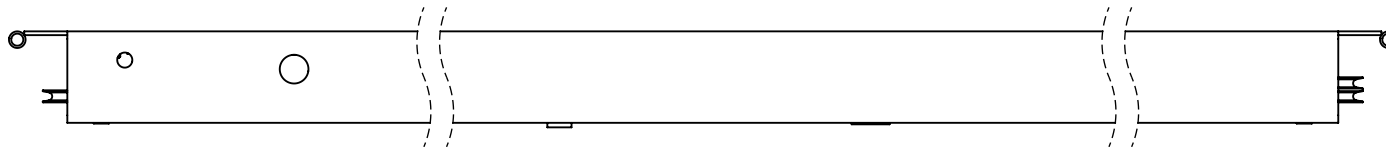
SHEET 1 OF 2

**NOTE: UNLESS OTHERWISE SPECIFIED.**

- SEE SHIPPING INSTRUCTIONS FOR FINAL PACKAGING
- ASSEMBLE ITEMS AS SHOWN

NEXT ASSEMBLY
5245381
5245389
5245392
5245393

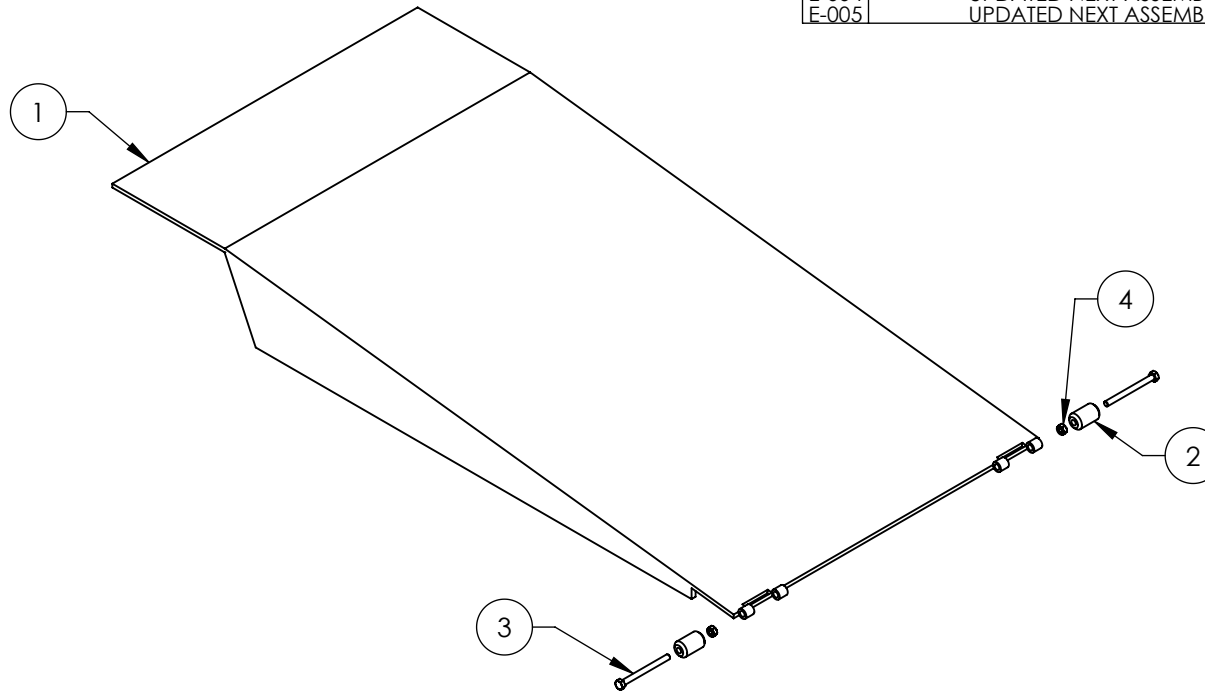
PROPRIETARY AND CONFIDENTIAL  
THE INFORMATION CONTAINED IN THIS DRAWING IS  
THE SOLE PROPERTY OF BENDPAK INC. ANY  
REPRODUCTION IN PART OR AS A WHOLE WITHOUT  
THE WRITTEN PERMISSION OF BENDPAK INC. IS  
PROHIBITED.



		1645 LEMONWOOD DR. SANTA PAULA, CA 93060	
TITLE: HD-7500BLX/9STX/9SWX/9XW POWER SIDE RAMP ASSEMBLY			
SIZE	DWG. NO.	REV	
A	5215192	U	
SCALE: 1:10			SHEET 2 OF 2



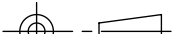


REVISION				
REV	DESCRIPTION	DATE	EDITED BY	ECO#
C	UPDATED TITLE TO REFLECT WHERE USED UPDATED NEXT ASSEMBLY	02/25/2010	AC	00333
D	UPDATED TITLE TO REFLECT WHERE USED UPDATED BOM REVISIONS REPLACED 5535112 WITH 5535357	06/10/2010	AC	00366
D-001	UPDATED NEXT ASSEMBLY	06/06/2011	TM	00464
D-002	UPDATED NEXT ASSEMBLY	10/27/2011	TM	00487
E	UPDATED BOM REVISION	08/22/2012	TM	00541
E-001	UPDATED NEXT ASSEMBLY	11/19/2012	TM	00562
E-002	UPDATED NEXT ASSEMBLY	05/20/2013	TM	00593
E-003	UPDATED NEXT ASSEMBLY	11/20/2013	TM	00626
E-004	UPDATED NEXT ASSEMBLY	06/10/2014	TM	00648
E-005	UPDATED NEXT ASSEMBLY	08/14/2014	TM	00664



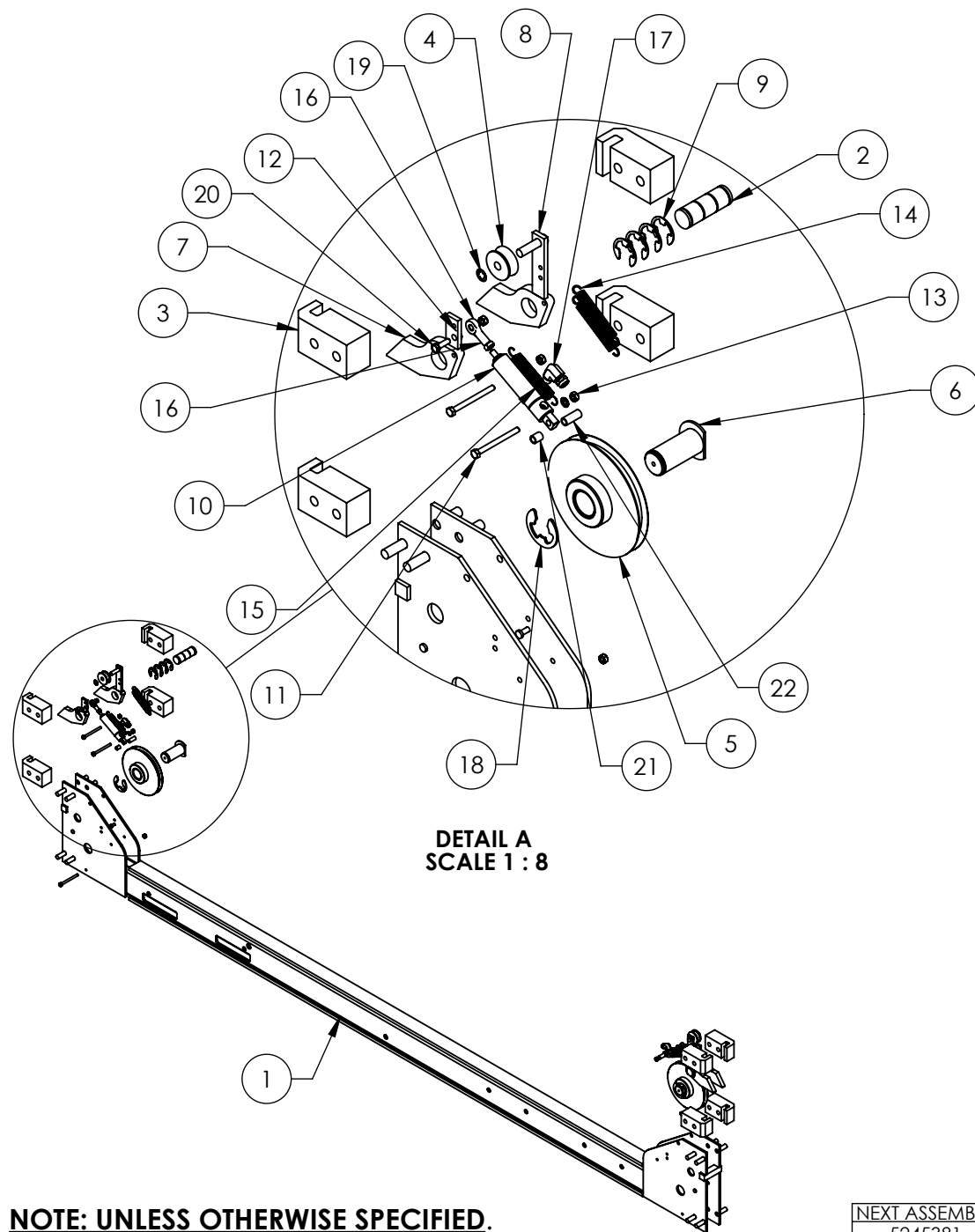
ITEM NO	PART NUMBER	DESCRIPTION	QTY	REV
1	5600891	HD-7500BL/7500BLX/ 9/9N/9NX/9ST/9STX/9XW DRIVE UP RAMP WELDMENT	1	D
2	5716149	HD-7500/9, HD/S-14 SERIES DRIVE UP RAMP PLASTIC ROLLER	2	F
3	5530005	HHB M6 x 1 x 70	2	-
4	5535357	NUT M6 x 1.0 NL	2	-

NEXT ASSEMBLY
5245275
5245381
5245382
5245383
5245384
5245385
5245386
5245388
5245391
5245392
5245393
5245395
5245396

DO NOT SCALE DRAWING		NAME	DATE	 <b>BendPak.</b> <small>MOVING AUTOMATIC SERVICE SOLUTIONS</small> 1645 LEMONWOOD DR. SANTA PAULA, CA 93060		
DIMENSIONS ARE IN MM		DRAWN	AC 11/13/2008			
		CHECKED		TITLE: HD-7500BL/BLX, 9/ST/STX/XW DRIVE UP RAMP ASSEMBLY		
		THIRD ANGLE PROJECTION				
				SIZE DWG. NO.		REV
PROPRIETARY AND CONFIDENTIAL THE INFORMATION CONTAINED IN THIS DRAWING IS THE SOLE PROPERTY OF <b>BENDPAK INC.</b> ANY REPRODUCTION IN PART OR AS A WHOLE WITHOUT THE WRITTEN PERMISSION OF <b>BENDPAK INC.</b> IS PROHIBITED.				<b>A</b>	5215193	F
				SCALE: 1:8		SHEET 1 OF 1

**NOTE: UNLESS OTHERWISE SPECIFIED.**

- SEE SHIPPING INSTRUCTIONS FOR FINAL PACKAGING
- ASSEMBLE ITEMS AS SHOWN




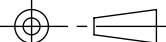

**NOTE: UNLESS OTHERWISE SPECIFIED.**

1. SEE SHIPPING INSTRUCTIONS FOR FINAL PACKAGING
2. ASSEMBLE ITEMS AS SHOWN

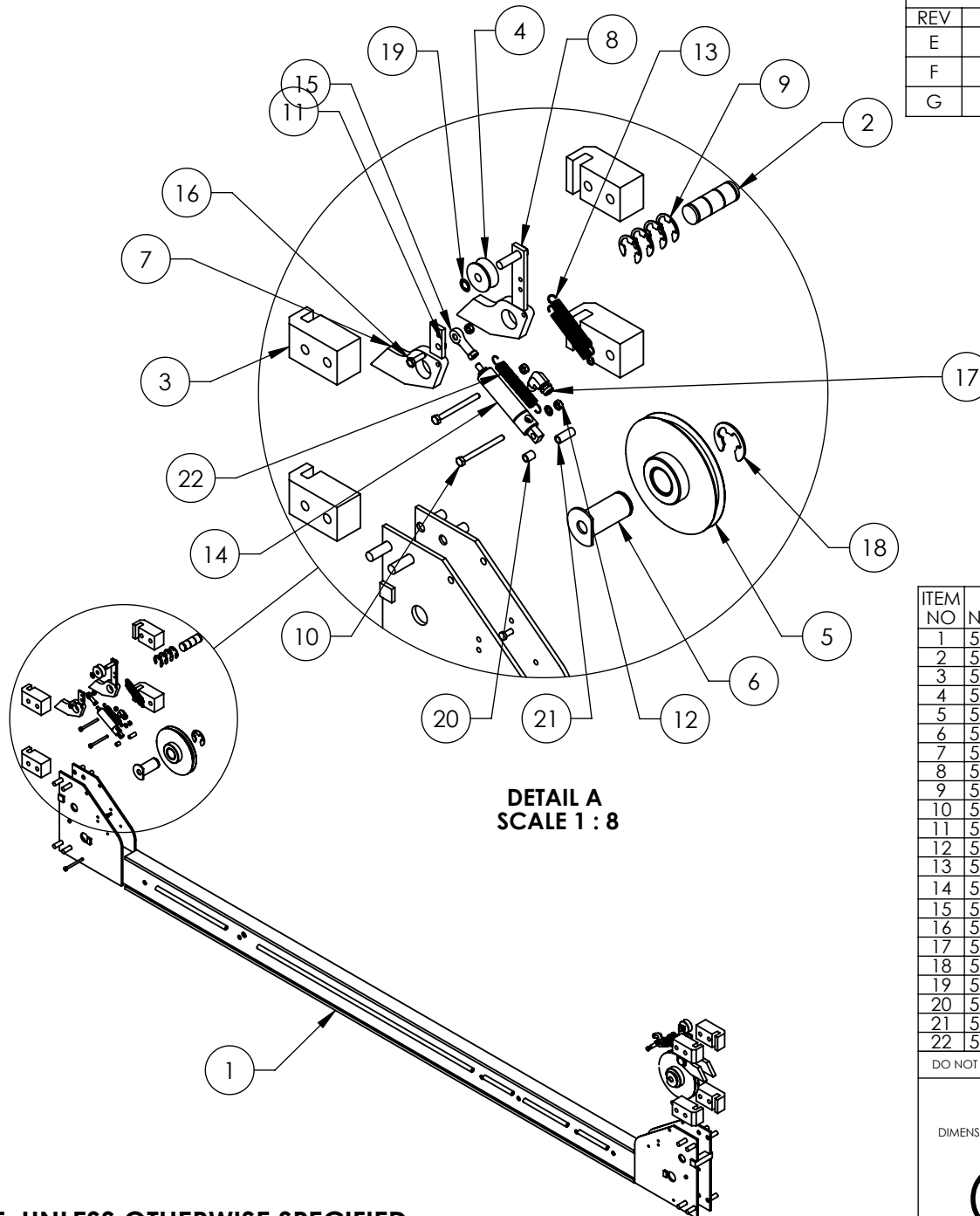
NEXT ASSEMBLY
5245381
5245382
5245383

REVISION				
REV	DESCRIPTION	DATE	EDITED BY	ECO#
E	REPLACED 5545026 WITH 5545005	03/19/2015	MR	00683
F	REMOVED (2) 5550025 AND (2) 5916630	11/25/2015	JM	00740
G	UPDATED BOM REVISIONS	12/30/2015	JM	00741

ITEM NO	PART NUMBER	DESCRIPTION	QTY	REV
1	5600714	HD-9/9XW CROSSTUBE WELDMENT, SMALL WINDOW	1	E
2	5746008	HD/HDS-7/7500/9/14, HDSO-14 SAFETY PIN	2	E
3	5716005	HD-7/7500/9/14/HDSO-14 PLASTIC SLIDE BLOCK	8	J
4	5575420	HD-7/7500/9 SERIES SAFETY ROLLER	2	C
5	5215122	HD-7/7500/9 SERIES SINGLE SHEAVE ROLLER ASSEMBLY	2	D
6	5600160	HD-7/7500/9 SERIES CROSSTUBE SHEAVE SHAFT WELDMENT	2	E
7	5600760	HD/HDS LIGHT DUTY SERIES SAFETY WELDMENT	2	B
8	5600044	HD/HDS LIGHT DUTY SERIES SLACK SAFETY WELDMENT	2	F
9	5540275	E RING Ø25mm OD DIN 6799 0250	8	-
10	5502195	AIR CYLINDER, Ø19mm x 25 STROKE	2	-
11	5530005	HHB M6 x 1 x 70	6	-
12	5545005	M6 FLAT WASHER	4	-
13	5535357	NUT M6 x 1.0 NL	8	-
14	5540065	SPRING Ø13mm x 90mm, SLACK SAFETY	4	A
15	5540070	SPRING Ø13mm x 89mm, AIR CYLINDER	2	B
16	5505625	FEMALE ROD END M6 x 33mm	2	-
17	5550087	FTG ELB -04 COMP x -02 NPT	2	-
18	5540010	E RING Ø32mm OD DIN 6799	2	-
19	5505030	ROTOR CLIP 10mm SS	2	-
20	5530093	HHB M6 x 1 x 20	2	-
21	5755136	HD AIR CYLINDER SPACER 12mm	2	B
22	5755137	HD AIR CYLINDER SPACER 25mm	2	B

DO NOT SCALE DRAWING		NAME		DATE		 1645 LEMONWOOD DR. SANTA PAULA, CA 93060				
DIMENSIONS ARE IN MM		DRAWN		TM				04/30/2013		
		CHECKED		-		-				
		THIRD ANGLE PROJECTION						TITLE: HD-9/9XL/XW CROSSTUBE ASSEMBLY, SMALL WINDOW		
										
		PROPRIETARY AND CONFIDENTIAL THE INFORMATION CONTAINED IN THIS DRAWING IS THE SOLE PROPERTY OF <b>BENDPAK INC.</b> ANY REPRODUCTION IN PART OR AS A WHOLE WITHOUT THE WRITTEN PERMISSION OF <b>BENDPAK INC.</b> IS PROHIBITED.						SIZE	DWG. NO.	REV
		A		5215621				G		
				SCALE: 1:20				SHEET 1 OF 1		

REVISION				
REV	DESCRIPTION	DATE	EDITED BY	ECO#
E	REPLACED 5545026 WITH 5545005	3/19/2015	MR	00683
F	REMOVED (2) 5550025 AND (2) 5716630	11/25/2015	JM	00740
G	UPDATED BOM REVISIONS	12/30/2015	JM	00741



**NOTE: UNLESS OTHERWISE SPECIFIED.**

1. SEE SHIPPING INSTRUCTIONS FOR FINAL PACKAGING
2. ASSEMBLE ITEMS AS SHOWN

ITEM NO	PART NUMBER	DESCRIPTION	QTY	REV
1	5600715	HD-9/9XW CROSSTUBE WELDMENT, LARGE WINDOW	1	E
2	5746008	HD/HDS-7/7500/9/14, HDSO-14 SAFETY PIN	2	E
3	5716005	HD-7/7500/9/14/HDSO-14 PLASTIC SLIDE BLOCK	8	J
4	5575420	HD-7/7500/9 SERIES SAFETY ROLLER	2	C
5	5215122	HD-7/7500/9 SERIES SINGLE SHEAVE ROLLER ASSEMBLY	2	D
6	5600160	HD-7/7500/9 SERIES CROSSTUBE SHEAVE SHAFT WELDMENT	2	E
7	5600760	HD/HDS LIGHT DUTY SERIES SAFETY WELDMENT	2	B
8	5600044	HD/HDS LIGHT DUTY SERIES SLACK SAFETY WELDMENT	2	F
9	5540275	E RING Ø25mm OD DIN 6799 0250	8	-
10	5530005	HHB M6 x 1 x 70	6	-
11	5545005	M6 FLAT WASHER	4	-
12	5535357	NUT M6 x 1.0 NL	8	-
13	5540065	SPRING Ø13mm x 90mm, SLACK SAFETY	4	A
14	5502195	AIR CYLINDER, Ø19mm x 25 STROKE	2	-
15	5505625	FEMALE ROD END M6 x 33mm	2	-
16	5530093	HHB M6 x 1 x 20	2	-
17	5550087	FTG ELB -04 COMP x -02 NPT	2	-
18	5540010	E RING Ø32mm OD DIN 6799	2	-
19	5505030	ROTOR CLIP 10mm SS	2	-
20	5755136	HD AIR CYLINDER SPACER 12mm	2	B
21	5755137	HD AIR CYLINDER SPACER 25mm	2	B
22	5540070	SPRING Ø13mm x 89mm, AIR CYLINDER	2	B

DO NOT SCALE DRAWING

DIMENSIONS ARE IN MM



NEXT ASSEMBLY
5245381
5245382
5245383

NAME	DATE
DRAWN TM	04/30/2013
CHECKED -	-
THIRD ANGLE PROJECTION	

PROPRIETARY AND CONFIDENTIAL  
THE INFORMATION CONTAINED IN THIS DRAWING IS THE SOLE PROPERTY OF BENDPAK INC. ANY REPRODUCTION IN PART OR AS A WHOLE WITHOUT THE WRITTEN PERMISSION OF BENDPAK INC. IS PROHIBITED.

**BendPak** 1645 LEMONWOOD DR.  
SANTA PAULA, CA 93060  
INDUSTRIAL AIRCRAFT SERVICE SOURCE

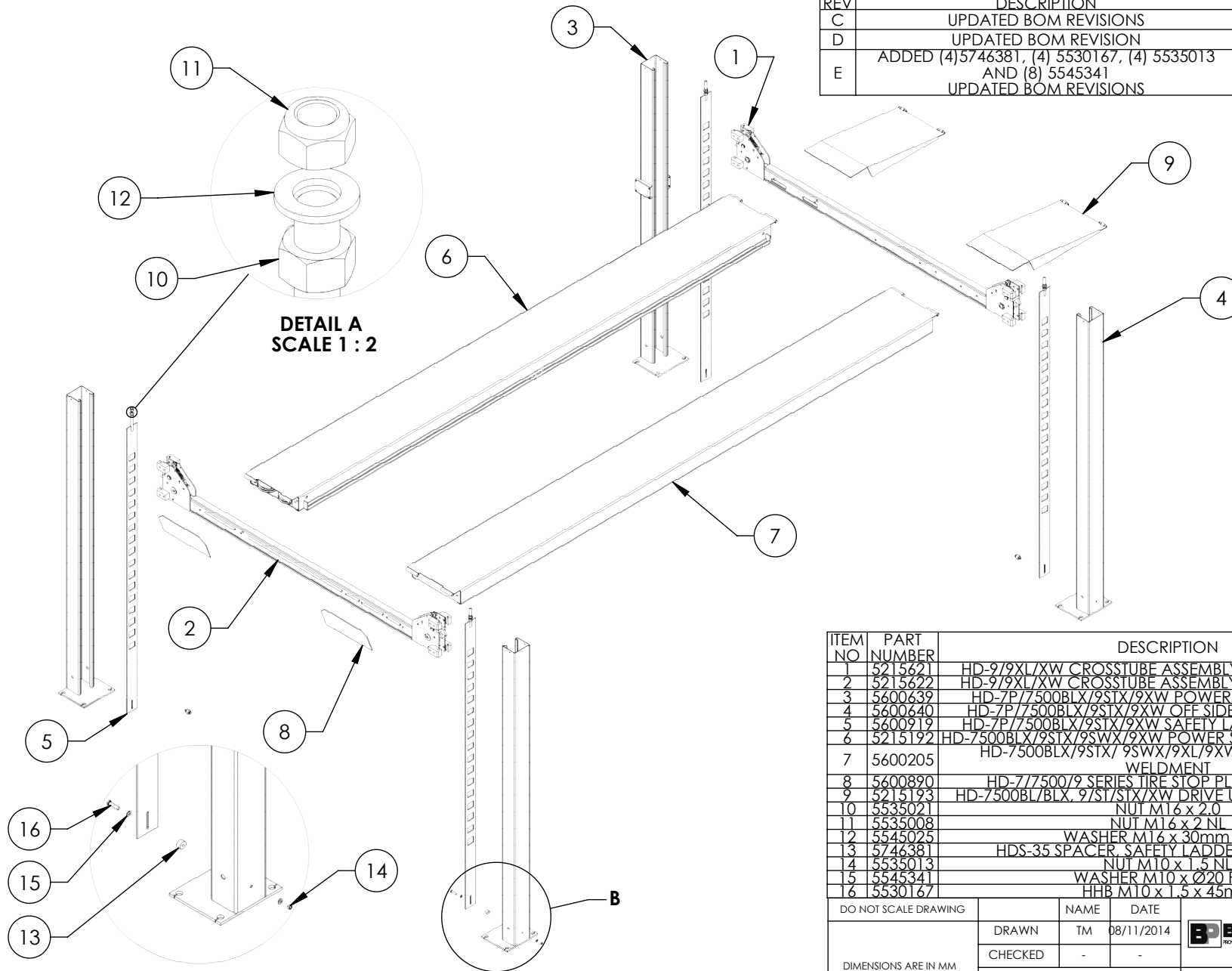
TITLE:  
HD-9/9XL/XW CROSSTUBE  
ASSEMBLY, LARGE WINDOW

SIZE DWG. NO. REV  
**A** 5215622 G

SCALE: 1:20

SHEET 1 OF 1

REVISION				
REV	DESCRIPTION	DATE	EDITED BY	ECO#
C	UPDATED BOM REVISIONS	04/28/2015	MR	00683
D	UPDATED BOM REVISION	11/25/2015	JM	00740
E	ADDED (4) 5746381, (4) 5530167, (4) 5535013 AND (8) 5545341 UPDATED BOM REVISIONS	12/30/2015	JM	00741



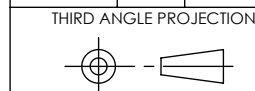
ITEM NO	PART NUMBER	DESCRIPTION	QTY	REV
1	5215621	HD-9/9XL/XW CROSSTUBE ASSEMBLY, SMALL WINDOW	1	G
2	5215622	HD-9/9XL/XW CROSSTUBE ASSEMBLY, LARGE WINDOW	1	G
3	5600639	HD-7P/7500BLX/9STX/9XW POWER POST WELDMENT	1	C
4	5600640	HD-7P/7500BLX/9STX/9XW OFF SIDE POST WELDMENT	3	C
5	5600919	HD-7P/7500BLX/9STX/9XW SAFETY LADDER WELDMENT	4	B
6	5215192	HD-7500BLX/9STX/9SWX/9XW POWER SIDE RAMP ASSEMBLY	1	U
7	5600205	HD-7500BLX/9STX/9SWX/9XL/9XW OFFSIDE RAMP WELDMENT	1	H
8	5600890	HD-7/7500/9 SERIES TIRE STOP PLATE WELDMENT	2	F
9	5215193	HD-7500BL/BLX, 9ST/STX/XW DRIVE UP RAMP ASSEMBLY	2	F
10	5535021	NUT M16 x 2.0	4	-
11	5535008	NUT M16 x 2 NI	4	-
12	5545025	WASHER M16 x 30mm FLAT	4	-
13	5746381	HDS-35 SPACER, SAFETY LADDER, 17.5mm LG	4	A
14	5535013	NUT M10 x 1.5 NI	4	-
15	5545341	WASHER M10 x Ø20 FLAT	8	-
16	5530167	HHB M10 x 1.5 x 45mm	4	-

DO NOT SCALE DRAWING

NAME DATE  
DRAWN TM 08/11/2014  
CHECKED - -

**BendPak** 1645 LEMONWOOD DR.  
SANTA PAULA, CA 93060

DIMENSIONS ARE IN MM



THIRD ANGLE PROJECTION  
  
PROPRIETARY AND CONFIDENTIAL  
THE INFORMATION CONTAINED IN THIS DRAWING IS THE SOLE PROPERTY OF BENDPAK INC. ANY REPRODUCTION IN PART OR AS A WHOLE WITHOUT THE WRITTEN PERMISSION OF BENDPAK INC. IS PROHIBITED.

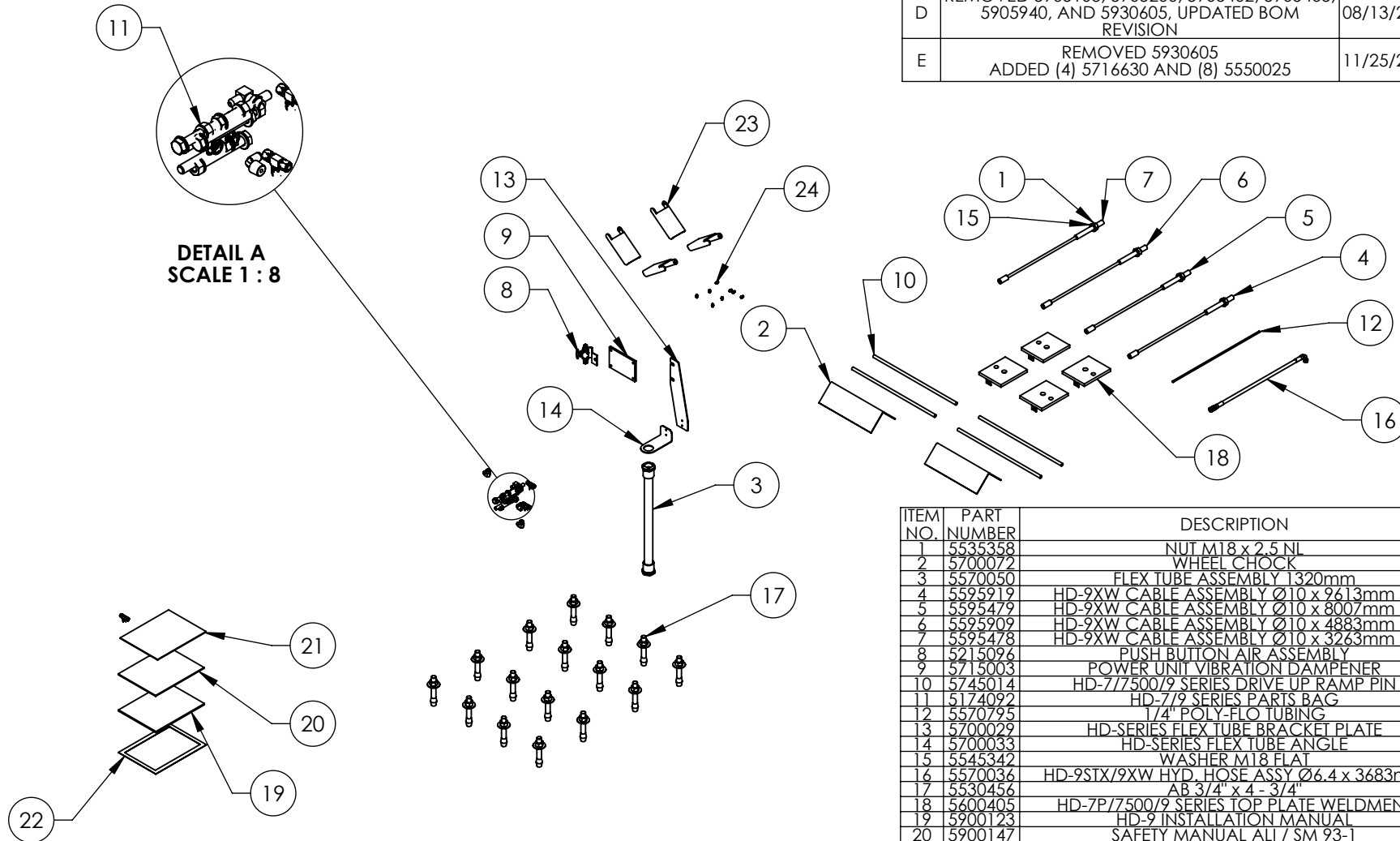
TITLE: HD-9XW LIFT SUPERSTRUCTURE  
SIZE DWG. NO. REV  
**A** 5245381 E  
SCALE: 1:40 SHEET 1 OF 1

**NOTE: UNLESS OTHERWISE SPECIFIED.**

- SEE SHIPPING INSTRUCTIONS FOR FINAL PACKAGING
- THREAD M16 HARDWARE ONTO LADDER BOLTS AS SHOWN

NEXT ASSEMBLY  
5260518

REVISION				
REV	DESCRIPTION	DATE	EDITED BY	ECO#
C	UPDATED BOM REVISION	01/08/2015	MR	00675
D	REMOVED 5905103, 5905200, 5905402, 5905465, 5905940, AND 5930605, UPDATED BOM REVISION	08/13/2015	TM	00683
E	REMOVED 5930605 ADDED (4) 5716630 AND (8) 5550025	11/25/2015	JM	00740



ITEM NO.	PART NUMBER	DESCRIPTION	QTY.	REV
1	5535358	NUT M18 x 2.5 NL	4	-
2	5700072	WHEEL CHOCK	2	A
3	5570050	FLEX TUBE ASSEMBLY 1320mm	1	B
4	5595919	HD-9XW CABLE ASSEMBLY Ø10 x 9613mm ST	1	F
5	5595479	HD-9XW CABLE ASSEMBLY Ø10 x 8007mm ST	1	A
6	5595909	HD-9XW CABLE ASSEMBLY Ø10 x 4883mm ST	1	D
7	5595478	HD-9XW CABLE ASSEMBLY Ø10 x 3263mm ST	1	A
8	5215096	PUSH BUTTON AIR ASSEMBLY	1	F
9	5715003	POWER UNIT VIBRATION DAMPENER	1	B
10	5745014	HD-7/7500/9 SERIES DRIVE UP RAMP PIN	4	B
11	5174092	HD-7/9 SERIES PARTS BAG	1	F
12	5570795	1/4" POLY-FLO TUBING	17000*mm	-
13	5700029	HD-SERIES FLEX TUBE BRACKET PLATE	1	F
14	5700033	HD-SERIES FLEX TUBE ANGLE	1	E
15	5545342	WASHER M18 FLAT	4	-
16	5570036	HD-9STX/9XW HYD. HOSE ASSY Ø6.4 x 3683mm	1	E
17	5530456	AB 3/4" x 4 - 3/4"	16	-
18	5600405	HD-7P/7500/9 SERIES TOP PLATE WELDMENT	4	C
19	5900123	HD-9 INSTALLATION MANUAL	1	-
20	5900147	SAFETY MANUAL ALL / SM 93-1	1	-
21	5900152	ALIGN OIM OPERATION INSPECTION & MAINTENANCE	1	-
22	5905151	SAFETY TIPS CARD ALL-ST 90	1	-
23	5716630	HD-9 SERIES CROSSTUBE COVER, PLASTIC	4	A
24	5550025	FIG GRS M6x1	8	PRE

# **NOTE: UNLESS OTHERWISE SPECIFIED.**

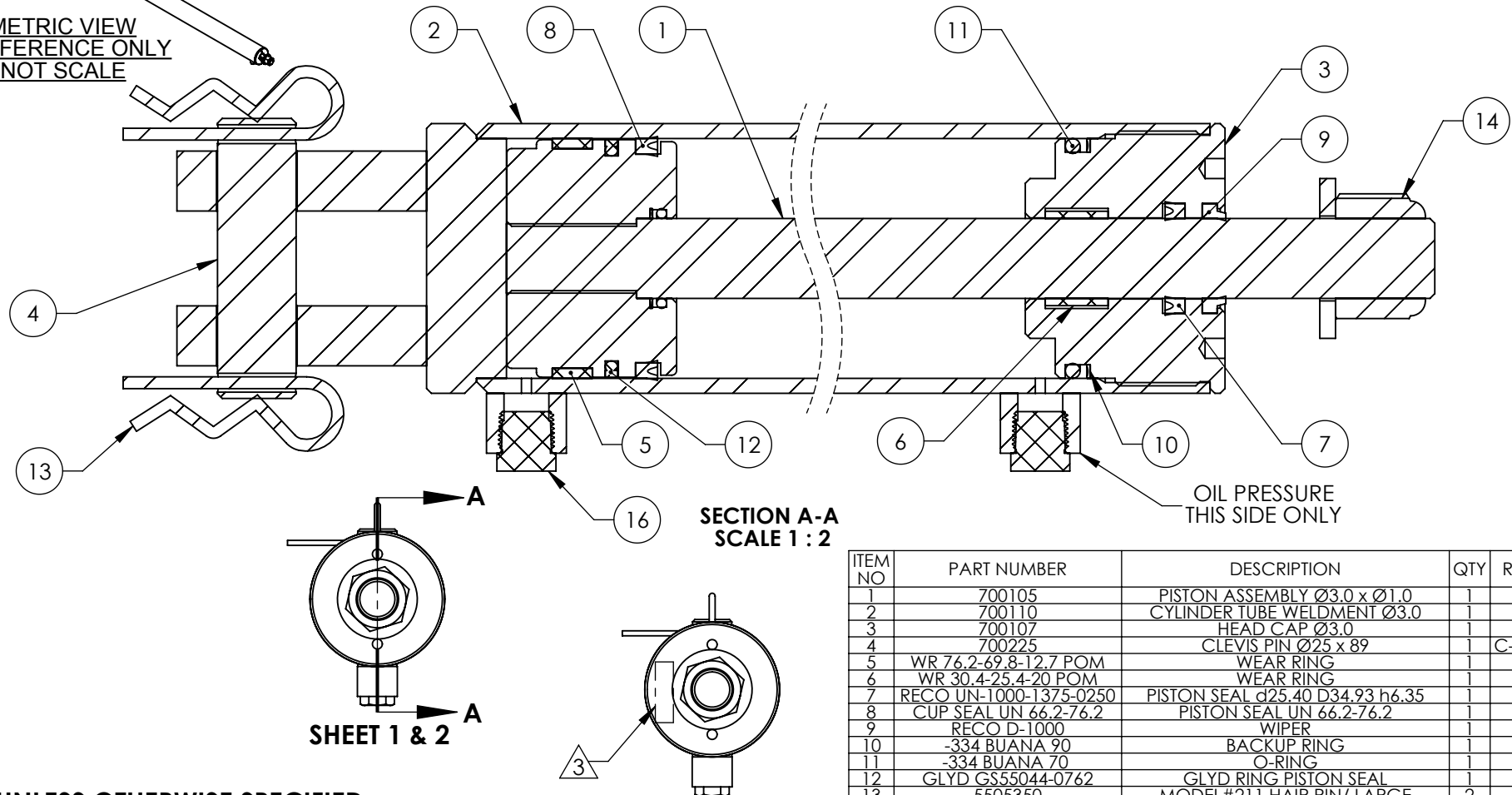
- SEE SHIPPING INSTRUCTIONS FOR FINAL PACKAGING
- INSERT PARTS BAG INTO PARTS BOX FOR SHIPMENT
- THREAD 5535358 WITH 5545342 ONTO CABLES FOR SHIPMENT
- HOSES AND CABLES IN REPRESENTATIONAL FORM
- (\*) LENGTH FOR REFERENCE ONLY

NEXT ASSEMBLY  
5260518

DO NOT SCALE DRAWING		NAME	DATE
DRAWN		TM	05/07/2013
CHECKED		-	-
DIMENSIONS ARE IN MM		THIRD ANGLE PROJECTION	
<p>PROPRIETARY AND CONFIDENTIAL THE INFORMATION CONTAINED IN THIS DRAWING IS THE SOLE PROPERTY OF BENDPAK INC. ANY REPRODUCTION IN PART OR AS A WHOLE WITHOUT THE WRITTEN PERMISSION OF BENDPAK INC. IS PROHIBITED.</p>			
BendPak. 1645 LEMONWOOD DR. SANTA PAULA, CA 93060		TITLE: PARTS BOX HD-9XW	
SIZE	DWG. NO.	REV	
A	5250168	E	
SCALE: 1:25		SHEET 1 OF 1	

REVISION				
REV	DESCRIPTION	DATE	EDITED BY	ECO#
E	UPDATED BOM REVISION	07/09/2012	TM	00534
F	ADDED 5505350, 5545031 AND 5535363	01/14/2015	MR	00675
G	ADDED 5580112, REMOVED 5540114, UPDATED BOM REVISION	03/27/2015	MR	00683



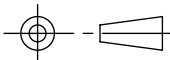
ISOMETRIC VIEW  
FOR REFERENCE ONLY  
DO NOT SCALE



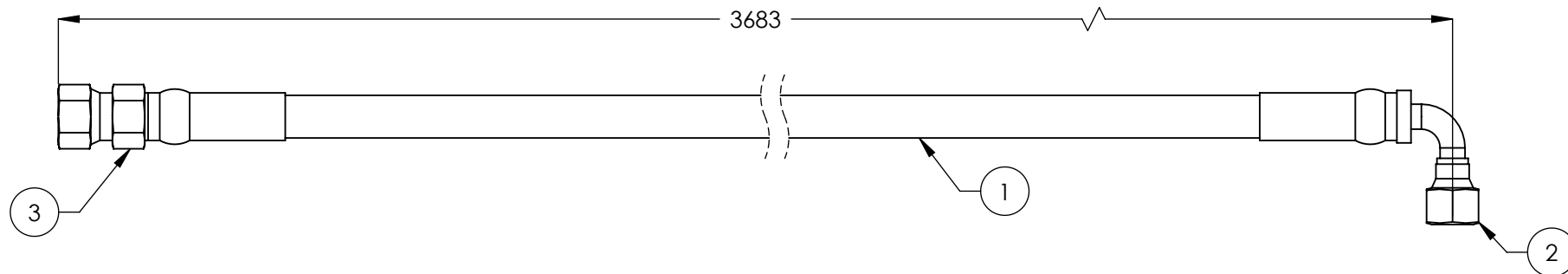
ITEM NO	PART NUMBER	DESCRIPTION	QTY	REV
1	700105	PISTON ASSEMBLY Ø3.0 x Ø1.0	1	F
2	700110	CYLINDER TUBE WELDMENT Ø3.0	1	D
3	700107	HEAD CAP Ø3.0	1	E
4	700225	CLEVIS PIN Ø25 x 89	1	C-002
5	WR 76.2-69.8-12.7 POM	WEAR RING	1	--
6	WR 30.4-25.4-20 POM	WEAR RING	1	--
7	RECO UN-1000-1375-0250	PISTON SEAL d25.40 D34.93 h6.35	1	--
8	CUP SEAL UN 66.2-76.2	PISTON SEAL UN 66.2-76.2	1	--
9	RECO D-1000	WIPER	1	--
10	-334 BUANA 90	BACKUP RING	1	--
11	-334 BUANA 70	O-RING	1	--
12	GLYD GS55044-0762	GLYD RING PISTON SEAL	1	--
13	5505350	MODEL#211 HAIR PIN/ LARGE	2	--
14	5535363	NUT 1"-14 NL	1	A
15	5545031	WASHER Ø2.0"x Ø1-1/16" x 5mm FLAT	1	--
16	5580112	3/8-18 NPT PLASTIC SCREW PLUG	2	--

# **NOTE: UNLESS OTHERWISE SPECIFIED.**

- GREASE SEALS PRIOR TO ASSEMBLY
- PRESSURE TEST CYLINDER ASSEMBLY 100% TO 3,600 PSI. (NO LEAKS)
- MARK IN APPROXIMATE LOCATION WITH THE FOLLOWING INFORMATION: MANUFACTURER  
MONTH/ YEAR  
PART NUMBER
- HERCULES HU18-2.62-37 MAY BE USED IN PLACE OF CUP SEAL UN 66.2-76.2.
- PARKER 4615-SHD-01000, HERCULES ST-100 OR AFM D-1000 MAY BE USED IN PLACE OF RECO D-1000
- DISOGRIN 001-073, HERCULES DRU18-1.00-31 OR PARKER UR 18701000-250 MAY BE USED IN PLACE OF RECO UN-1000-1375-0250
- HERCULES 25.4-30.4-20 POM MAY BE USED IN PLACE OF WR-01250-0500-125
- HERCULES 27.2-69.8-12 POM MAY BE USED IN PLACE OF WR-03000-0500-125
- VERIFY HYDRAULIC PORTS ARE CAPPED WITH PLUGS

DO NOT SCALE DRAWING		NAME	DATE	1645 LEMONWOOD DR. SANTA PAULA, CA 93060		
DIMENSIONS ARE IN MM 		DRAWN	AC	05/11/2010	 <b>BendPak.</b> <small>REWORKING AUTOMOTIVE SERVICE SOLUTIONS</small>	
		CHECKED	CA	08/27/2015		
		THIRD ANGLE PROJECTION 			TITLE: CYLINDER ASSEMBLY Ø3.0 x 82	
<b>PROPRIETARY AND CONFIDENTIAL</b> THE INFORMATION CONTAINED IN THIS DRAWING IS THE SOLE PROPERTY OF <b>BENDPAK INC.</b> ANY REPRODUCTION IN PART OR AS A WHOLE WITHOUT THE WRITTEN PERMISSION OF <b>BENDPAK INC.</b> IS PROHIBITED.				SIZE	DWG. NO.	REV
				<b>A</b>	5502166	G
SCALE: 1:4					SHEET 1 OF 2	

REVISION				
REV	DESCRIPTION	DATE	EDITED BY	ECO#
C	UPDATED NAME TO INCLUDE NEXT ASSEMBLY, UPDATED NEXT ASSEMBLY	12/11/2008	AC	00174
D	REMOVED 9NX FROM TITLE	02/24/2010	AC	00333
D-001	UPDATED NEXT ASSEMBLY	11/23/2012	TM	00562
D-002	UPDATED NEXT ASSEMBLIES	05/21/2013	TM	00593
E	REPLACED 5570110 WITH 5570129	1/12/2015	MR	00675



ITEM NO.	PART NUMBER	DESCRIPTION	QTY.	REV
1	5570129	Ø6.4 ID HYDRAULIC HOSE	3617mm*	-
2	5550345	FTG ELB Ø1/4 CRIMP x -04 JIC	1	-
3	5550325	FTG NPL Ø1/4 CRIMP x -04 JIC	1	-

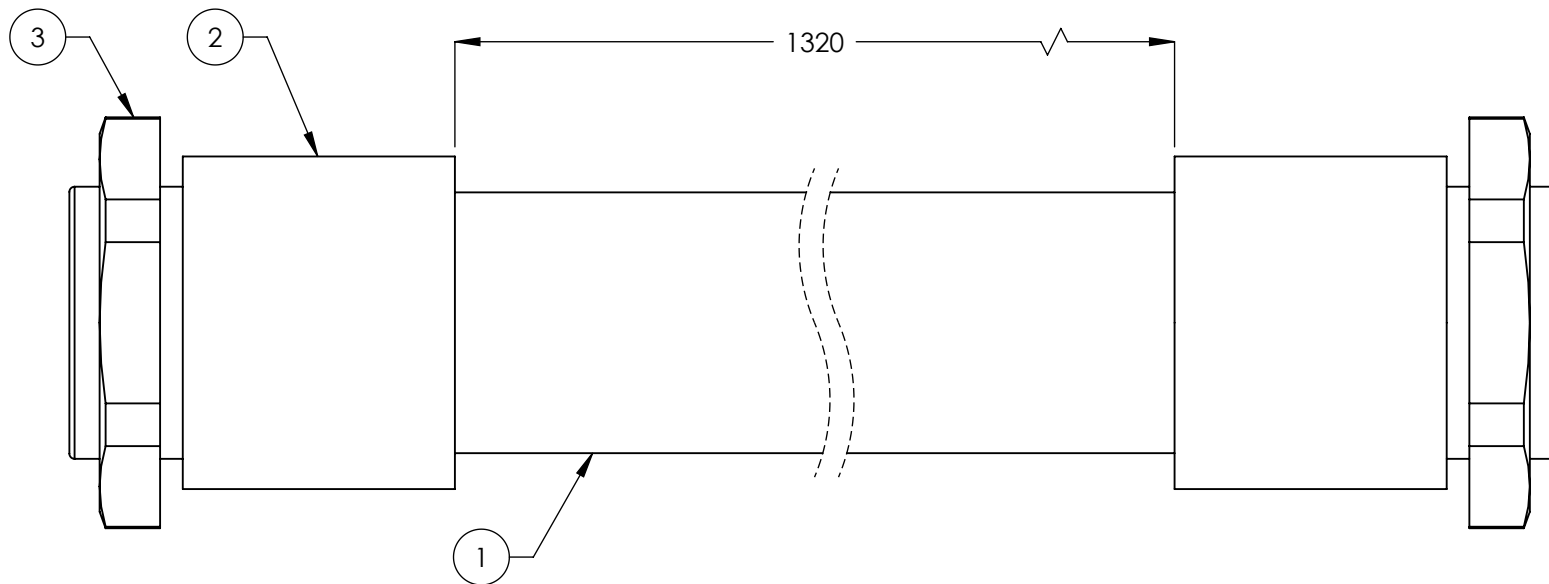
DO NOT SCALE DRAWING	NAME	DATE	<b>BendPak</b> <small>HYDRAULIC AUTOMATIC BENDERS</small> 1645 LEMONWOOD DR. SANTA PAULA, CA 93061
DIMENSIONS ARE IN MM TOLERANCES: 0. = ±1.5 0.0 = ±1.0	DRAWN	AC 01/18/2008	
	CHECKED	VB 02/06/2015	
THIRD ANGLE PROJECTION			TITLE: <b>HD-9STX/9XW HYD. HOSE</b> <b>ASSY Ø6.4 x 3683mm</b>
ANGULAR: MACH ±2° SURFACE FINISH 1.6 ISO Ra µm FOR MACHINED SURFACES UNLESS OTHERWISE SPECIFIED			SIZE DWG. NO. <b>A 5570036</b>
PROPRIETARY AND CONFIDENTIAL THE INFORMATION CONTAINED IN THIS DRAWING IS THE SOLE PROPERTY OF BENDPAK INC. ANY REPRODUCTION IN PART OR AS A WHOLE WITHOUT THE WRITTEN PERMISSION OF BENDPAK INC. IS PROHIBITED.			REV <b>E</b>
SCALE: 1:2			SHEET 1 OF 1

**NOTE: UNLESS OTHERWISE SPECIFIED.**


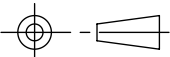
- FOR ITEM 1 SPECIFICATIONS REFER TO PART SPECIFICATION FORM
- (\*)ITEM 1 QTY FOR REFERENCE ONLY

General Table
NEXT ASSEMBLY
5250168
5250187
5250189
5570036

REVISION		DATE	EDITED BY	ECO#
REV.	DESCRIPTION			
A	PRODUCTION RELEASE	12/24/2007	AC	00104
A-001	CHANGED SURFACE FINISH FROM 3.2 $\mu\text{m}$ TO 1.6 $\text{Ra } \mu\text{m}$	09/05/2008	GJ	00237
A-002	UPDATED NEXT ASSEMBLY	10/02/2008	AC	00140
B	UPDATE TUBE TO NEW STYLE, UPDATED NEXT ASSEMBLY AND TITLE	12/11/2008	AC	00256
B-001	UPDATED NEXT ASSEMBLY	05/04/2009	AC	00277
B-013	UPDATED NEXT ASSEMBLIES	05/17/2013	TM	00593



ITEM NO	PART NUMBER	DESCRIPTION	QTY.	REV
1	5570053	PE FLEX TUBE $\varnothing 34.5 \times \varnothing 29$	1386mm*	-
2	5555555	WQG1-M36/AD34.5 CONNECTOR	2	-
3	5535050	PLASTIC NUT M36 x 2	2	-

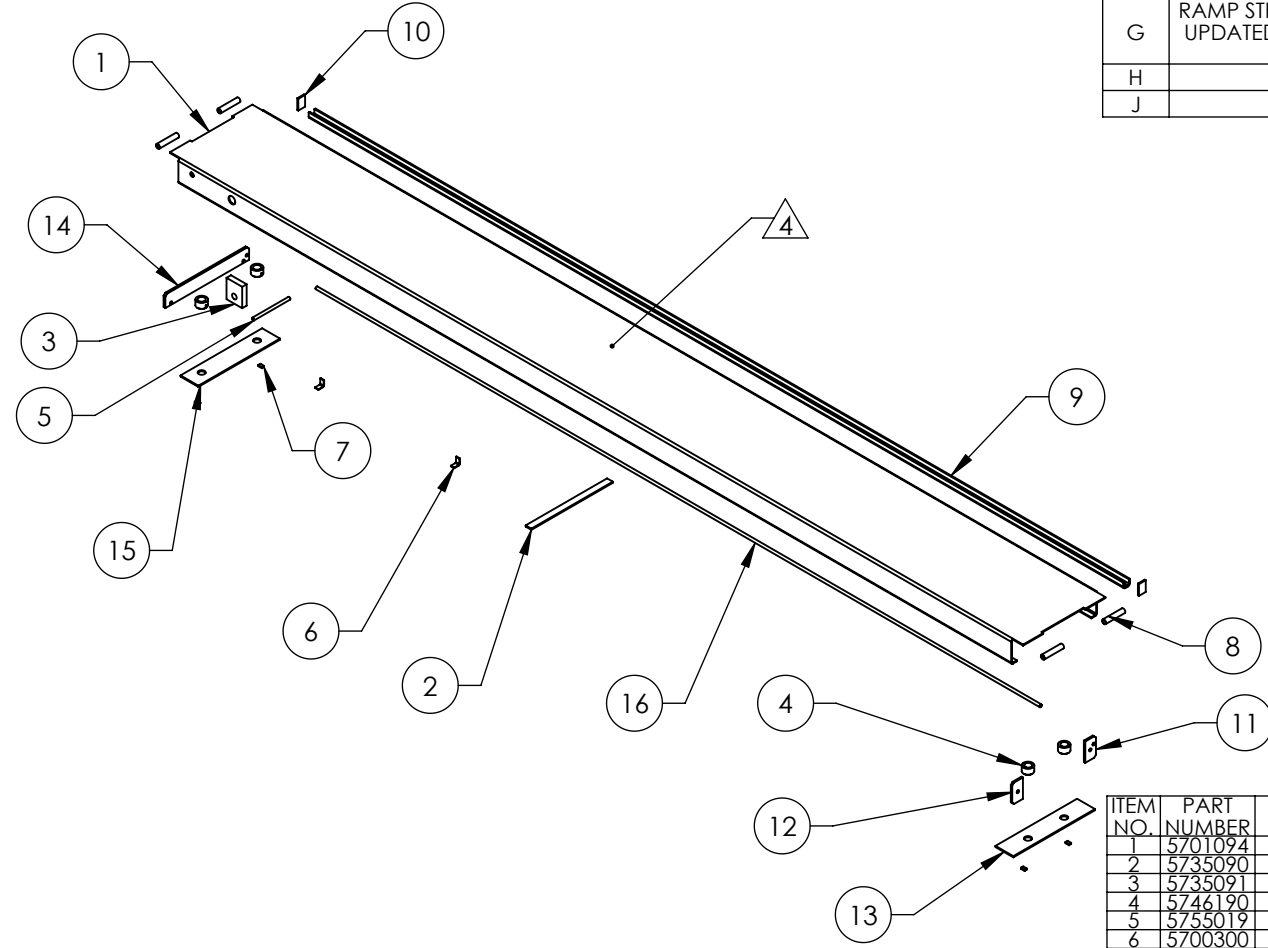
DO NOT SCALE DRAWING		NAME		DATE		 <b>BendPak.</b> <small>PROVIDING AUTOMOTIVE SERVICE SOLUTIONS</small>		1645 LEMONWOOD DR. SANTA PAULA, CA 93060	
DIMENSIONS ARE IN MM TOLERANCES: 0. = ±1.5 0.0 = ±1.0 0.00 = ±0.25 0.000 = ±0.13  ANGULAR: MACH ±2°  SURFACE FINISH 1.6 ISO Ra μm FOR MACHINED SURFACES UNLESS OTHERWISE SPECIFIED  MATERIAL:		DRAWN		AC		12/24/2007			
		CHECKED							
		THIRD ANGLE PROJECTION							
SIZE:		<b>PROPRIETARY AND CONFIDENTIAL</b> THE INFORMATION CONTAINED IN THIS DRAWING IS THE SOLE PROPERTY OF <b>BENDPAK INC.</b> ANY REPRODUCTION IN PART OR AS A WHOLE WITHOUT THE WRITTEN PERMISSION OF <b>BENDPAK INC.</b> IS PROHIBITED.				TITLE:		FLEX TUBE ASSEMBLY 1320mm	
						SIZE DWG. NO.		REV	
						<b>A</b> 5570050		<b>B</b>	
						SCALE: 1:1		SHEET 1 OF 1	

**NOTE: UNLESS OTHERWISE SPECIFIED.**

- FOR ITEM 1 SPECIFICATIONS REFER TO PART SPECIFICATION FORM
- (\*)ITEM 1 QTY FOR REFERENCE ONLY



REVISION				
REV	DESCRIPTION	DATE	EDITED BY	ECO#
G	RAMP STRAP DISTANCE WAS 2147 NOW 1969, UPDATED NEXT ASSEMBLY, UPDATED TITLE TO REFLECT WHERE USED	06/03/2011	TM	00464
H	UPDATED BOM REVISION	08/20/2012	TM	00541
J	UPDATED BOM REVISION	09/02/2014	TM	00664


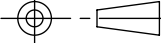


ITEM NO.	PART NUMBER	DESCRIPTION	QTY	REV
1	5701094	HD-7500BLX/9STX/9SWX/ 9XW/9AE EXTENDED RAMP	1	E
2	5735090	HD-7500/9 SERIES RAMP STRAP	1	B
3	5735091	HD-7500/9 SERIES CYLINDER CLEVIS	1	C
4	5746190	HD-7/7500/9 SERIES RAMP SHEAVE BUSHING	4	C
5	5755019	AIR LINE TROUGH Ø13 x Ø9.8 x 203	1	B
6	5700300	HYD. HOSE HOLDER	2	A
7	5735028	PIN STOP	4	B
8	5755020	HD-7/7500/9 SERIES DRIVE UP RAMP HINGE TUBE	4	C
9	5700192	HD-7PX SERIES, HD-9STX/9SWX/ 9XW/9AE ROLLING BRIDGE BEAM	1	D
10	5735032	HD-7/9/14, HDS/HDSO-14, XR-T2000 ROLLING JACK RAIL CLOSEOUT	2	C
11	5736203	HD-7500/9 SERIES 4-SHEAVE RIGHT RAMP BOLT PLATE	1	C
12	5736204	HD-7500/9 SERIES 4-SHEAVE LEFT RAMP BOLT PLATE	1	C
13	5736200	HD-7500/9 SERIES 4-SHEAVE RAMP END PLATE	1	B
14	5736202	HD-7/7500/9 SERIES 2-SHEAVE RAMP BOLT PLATE	1	C
15	5736201	HD-7/7500/9 SERIES 2-SHEAVE RAMP END PLATE	1	B
16	5755024	AIR LINE TROUGH Ø13 x Ø9.8 x 4064	1	A

**NOTE: UNLESS OTHERWISE SPECIFIED.**

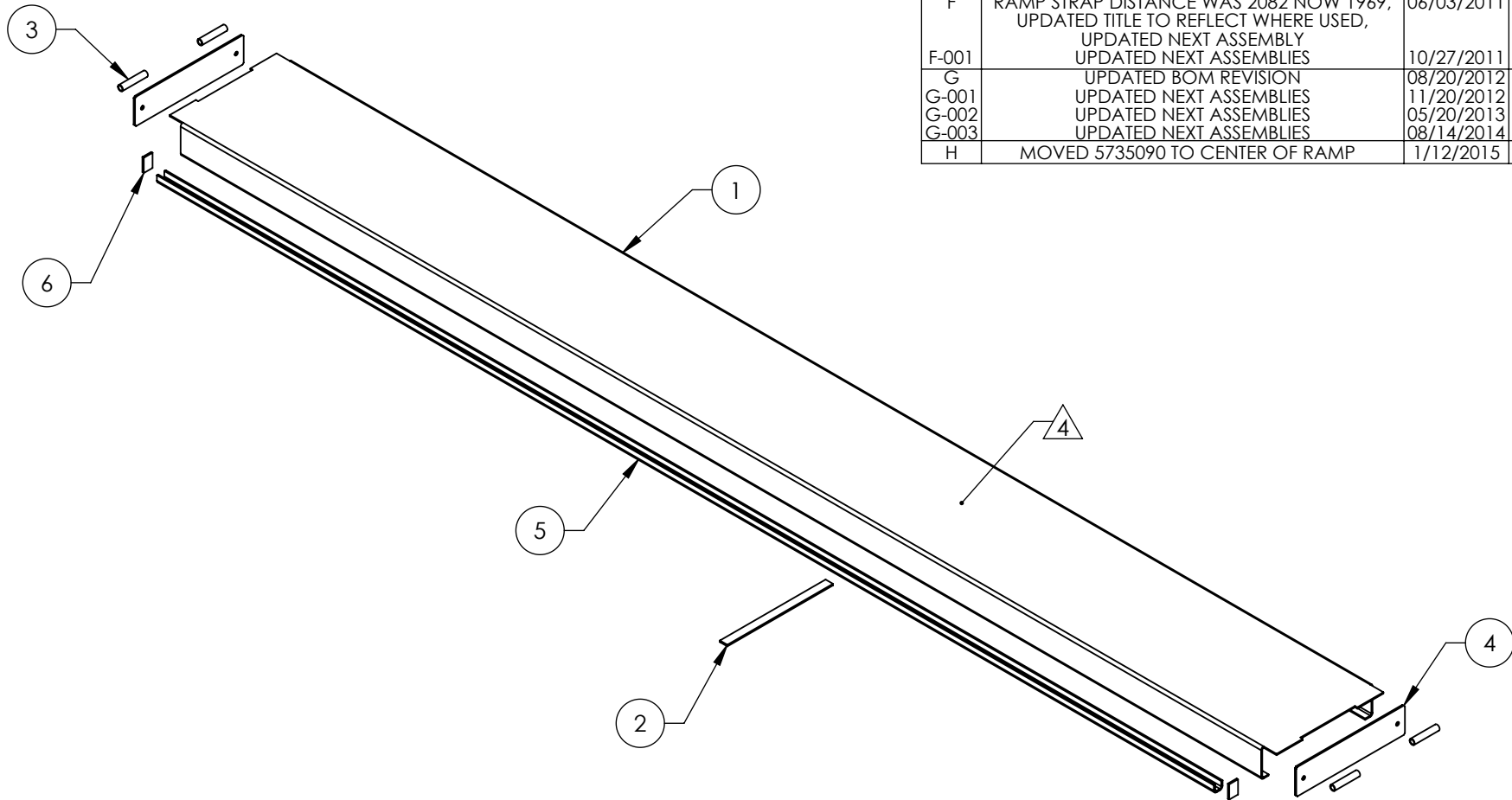
- BREAK AND DEBURR ALL SHARP EDGES 0.3mm
- REMOVE ALL WELD SPLATTER
- PAINT BENDPAK BLUE
- APPLY #30 GRIT ALUMINUM OXIDE WHEN PAINTING TO TOP ONLY AFTER WELDING

NEXT ASSEMBLY
5215192
5215525



DO NOT SCALE DRAWING		NAME	DATE	 1645 LEMONWOOD DR. SANTA PAULA, CA 93060				
DIMENSIONS ARE IN MM		DRAWN	AC			11/28/2008		
TOLERANCES:		CHECKED	MT	09/13/2012	<b>TITLE:</b> HD-7500BLX/9STX/ 9SWX/9XL/9XW POWER SIDE WELDMENT			
0. = ±1.5 0.0 = ±0.5		THIRD ANGLE PROJECTION						
ANGULAR: 0. = ±2°								
SURFACE FINISH 1.6 ISO Ra µm FOR MACHINED SURFACES UNLESS OTHERWISE SPECIFIED								
MATERIAL:		<b>PROPRIETARY AND CONFIDENTIAL</b> THE INFORMATION CONTAINED IN THIS DRAWING IS THE SOLE PROPERTY OF <b>BENDPAK INC.</b> ANY REPRODUCTION IN PART OR AS A WHOLE WITHOUT THE WRITTEN PERMISSION OF <b>BENDPAK INC.</b> IS PROHIBITED.						
SIZE:					<b>SIZE</b> DWG. NO.			REV
—					<b>A</b> 5600192			J
—					SCALE: 1:30			SHEET 1 OF 4

**BendPak** 1645 LEMONWOOD DR. SANTA PAULA, CA 93060

REVISION				
REV	DESCRIPTION	DATE	EDITED BY	ECO#
F	RAMP STRAP DISTANCE WAS 2082 NOW 1969, UPDATED TITLE TO REFLECT WHERE USED, UPDATED NEXT ASSEMBLY	06/03/2011	TM	00464
F-001	UPDATED NEXT ASSEMBLIES	10/27/2011	TM	00487
G	UPDATED BOM REVISION	08/20/2012	TM	00541
G-001	UPDATED NEXT ASSEMBLIES	11/20/2012	TM	00562
G-002	UPDATED NEXT ASSEMBLIES	05/20/2013	TM	00593
G-003	UPDATED NEXT ASSEMBLIES	08/14/2014	TM	00664
H	MOVED 5735090 TO CENTER OF RAMP	1/12/2015	MR	00675



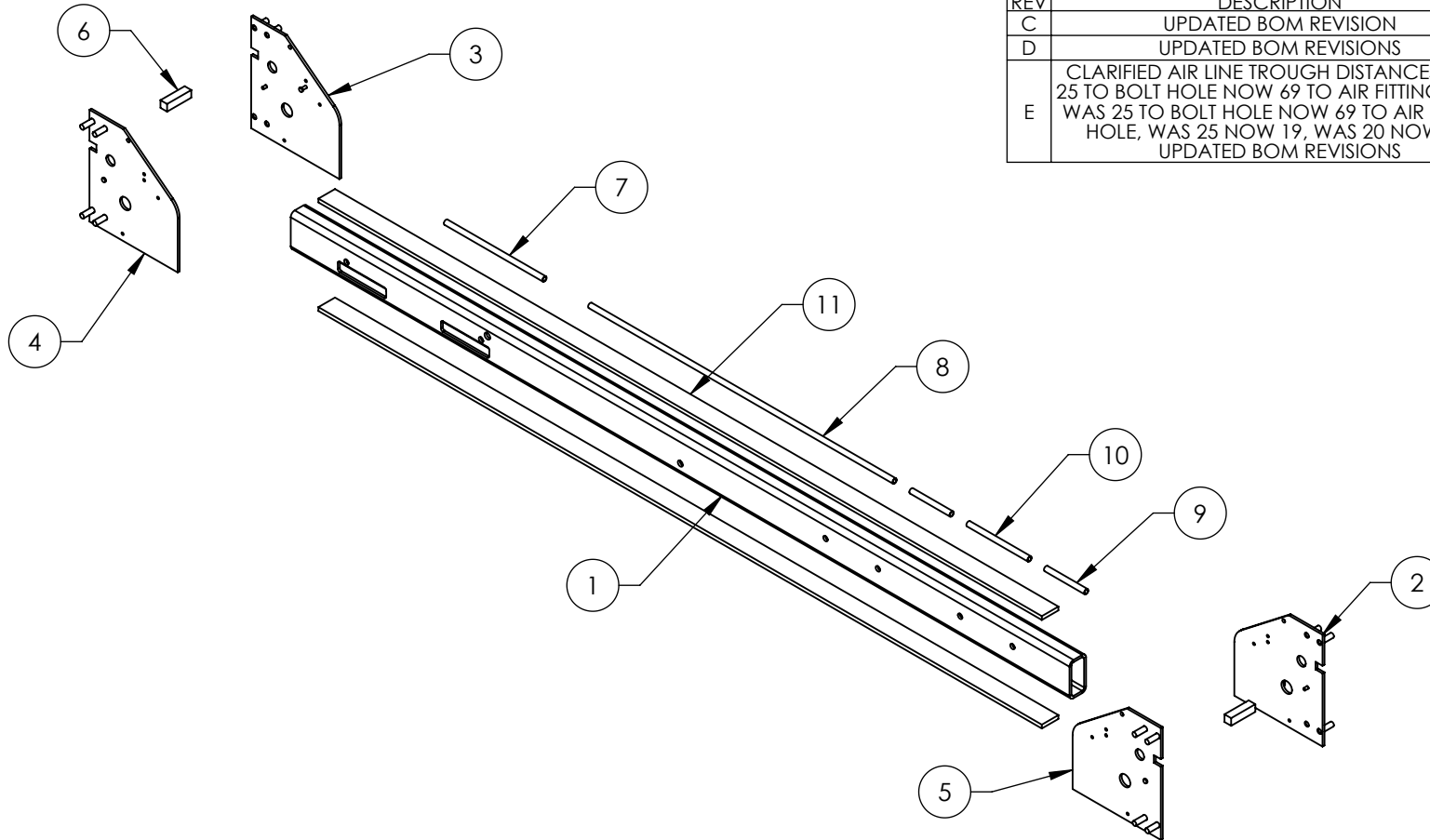
ITEM NO	PART NUMBER	DESCRIPTION	QTY	REV
1	5701473	HD-7/7500/9 SERIES EXTENDED RAMP	1	C
2	5735090	HD-7500/9 SERIES RAMP STRAP	1	B
3	5755090	HD-7/7500/9 SERIES DRIVE UP RAMP HINGE TUBE	4	C
4	5736090	HD-7/7500/9 SERIES RAMP END PLATE	2	C
5	5700192	HD-7PX SERIES, HD-9STX/9SWX/ 9XW/9AE ROLLING BRIDGE BEAM	1	D
6	5735032	HD-7/9/14, HDS/HDSO-14, XR-12000 ROLLING JACK RAIL CLOSEOUT	2	C

DO NOT SCALE DRAWING		NAME	DATE	 1645 LEMONWOOD DR. SANTA PAULA, CA 93060				
		DRAWN	AC			11/05/2008		
		CHECKED	CA	08/27/2015				
DIMENSIONS ARE IN MM TOLERANCES: 0. = ±1.5 0.0 = ±0.5		THIRD ANGLE PROJECTION			TITLE: HD-7500BLX/9STX/ 9SWX/9XL/9XW OFFSIDE RAMP WELDMENT			
								
ANGULAR: 0. = ±2°		<p>PROPRIETARY AND CONFIDENTIAL</p> <p>THE INFORMATION CONTAINED IN THIS DRAWING IS THE SOLE PROPERTY OF <b>BENDPAK INC.</b> ANY REPRODUCTION IN PART OR AS A WHOLE WITHOUT THE WRITTEN PERMISSION OF <b>BENDPAK INC.</b> IS PROHIBITED.</p>			SIZE DWG. NO. 5600205		REV H	
SURFACE FINISH 1.6 ISO Ra µm FOR MACHINED SURFACES UNLESS OTHERWISE SPECIFIED								
SCALE: 1:20				SHEET 1 OF 3				


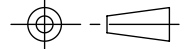
**NOTE: UNLESS OTHERWISE SPECIFIED.**

- BREAK AND DEBURR ALL SHARP EDGES 0.3mm
- REMOVE ALL WELD SPLATTER
- PAINT BENDPAK BLUE
- APPLY #30 GRIT ALUMINUM OXIDE WHEN PAINTING TO TOP ONLY AFTER WELDING

REVISION				
REV	DESCRIPTION	DATE	EDITED BY	ECO#
C	UPDATED BOM REVISION	04/01/2014	TM	00648
D	UPDATED BOM REVISIONS	09/30/2014	TM	00664
E	CLARIFIED AIR LINE TROUGH DISTANCES, WAS 25 TO BOLT HOLE NOW 69 TO AIR FITTING HOLE, WAS 25 TO BOLT HOLE NOW 69 TO AIR FITTING HOLE, WAS 25 NOW 19, WAS 20 NOW 32, UPDATED BOM REVISIONS	06/01/2015	TM	00683



ITEM NO	PART NUMBER	DESCRIPTION	QTY	REV
1	5766187	HD-7W/7XW/9/9XW CROSSTUBE, SMALL WINDOW	1	B
2	5620130	HD-7/7500/9 SERIES CROSS TUBE END PLATE #1	1	J
3	5620131	HD-7/7500/9 SERIES CROSS TUBE END PLATE #2	1	J
4	5620132	HD-7/7500/9 SERIES CROSS TUBE END PLATE #3	1	J
5	5620133	HD-7/7500/9 SERIES CROSS TUBE END PLATE #4	1	J
6	5760010	HD-7/9 SERIES CROSSTUBE SAFETY BLOCK	2	B
7	5755018	AIR LINE TROUGH Ø13 x Ø9.8 x 297	1	C
8	5755020	AIR LINE TROUGH Ø13 x Ø9.8 x 918	1	C
9	5755022	AIR LINE TROUGH Ø13 x Ø9.8 x 121	2	B
10	5755021	AIR LINE TROUGH Ø13 x Ø9.8 x 184	1	B
11	5735460	HD-7W/7XW/9/9XW CROSS TUBE STRAP	2	A

DO NOT SCALE DRAWING		NAME	DATE		
DIMENSIONS ARE IN MM TOLERANCES: 0. = ±1.5 0.0 = ±0.5  ANGULAR: 0. = ±2°  SURFACE FINISH 1.6 ISO Ra µm FOR MACHINED SURFACES UNLESS OTHERWISE SPECIFIED		DRAWN	TM	11/16/2012	 1645 LEMONWOOD DR. SANTA PAULA, CA 93060
		CHECKED	CA	08/26/2015	
		THIRD ANGLE PROJECTION		TITLE:	
		HD-9/9XW CROSSTUBE WELDMENT, SMALL WINDOW			
		SIZE	DWG. NO.		REV
		A	5600714		E
<p>PROPRIETARY AND CONFIDENTIAL</p> <p>THE INFORMATION CONTAINED IN THIS DRAWING IS THE SOLE PROPERTY OF <b>BENDPAK INC.</b> ANY REPRODUCTION IN PART OR AS A WHOLE WITHOUT THE WRITTEN PERMISSION OF <b>BENDPAK INC.</b> IS PROHIBITED.</p>		SCALE: 1:15			
		SHEET 1 OF 2			

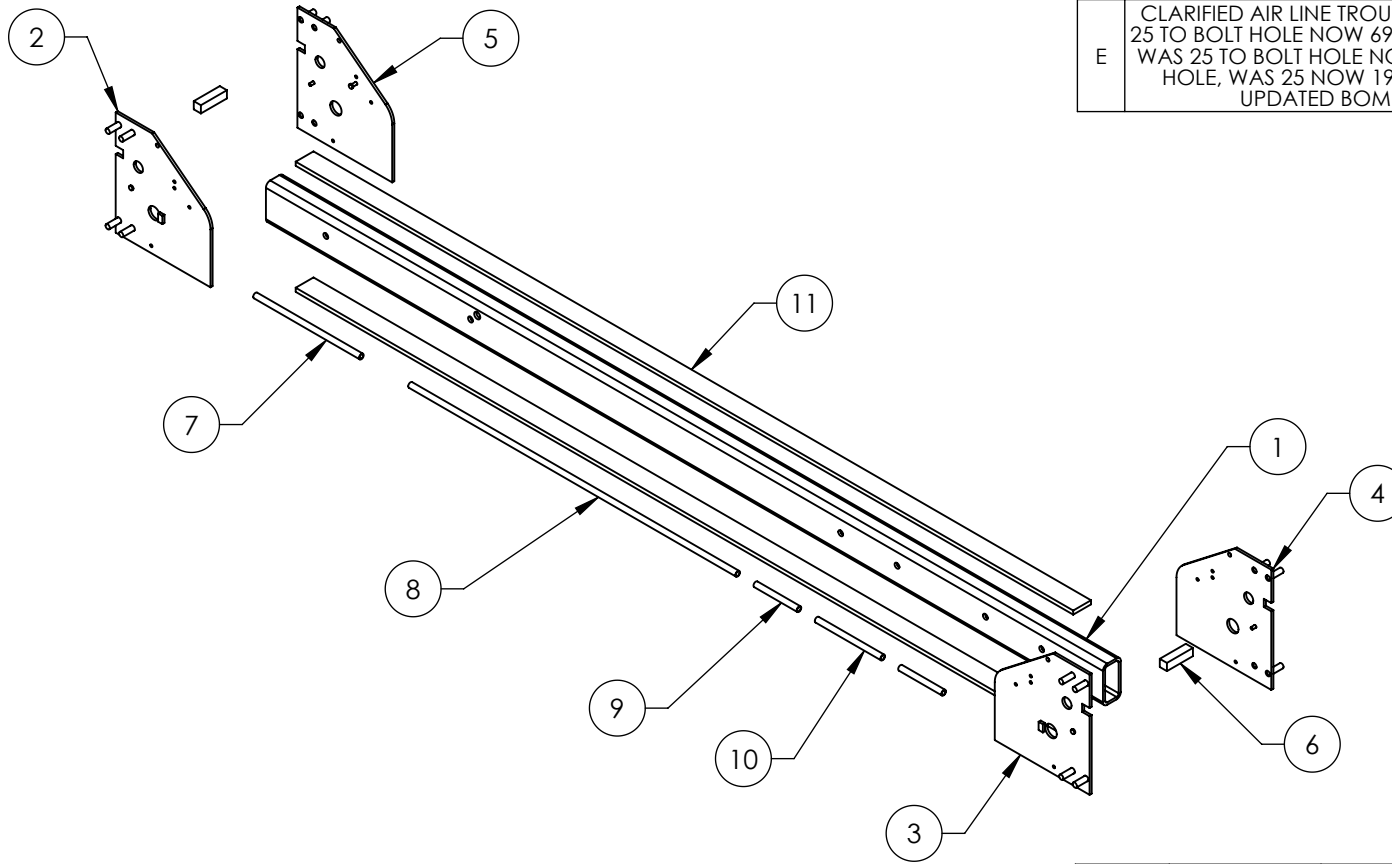
**NOTE: UNLESS OTHERWISE SPECIFIED.**

- BREAK AND DEBURR ALL SHARP EDGES 0.3mm
- REMOVE ALL WELD SPLATTER
- PAINT BENDPAK BLUE


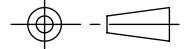
NEXT ASSEMBLY  
5215621

PROPRIETARY AND CONFIDENTIAL  
THE INFORMATION CONTAINED IN THIS DRAWING IS THE SOLE PROPERTY OF BENDPAK INC. ANY REPRODUCTION IN PART OR AS A WHOLE WITHOUT THE WRITTEN PERMISSION OF BENDPAK INC. IS PROHIBITED.

REVISION				
REV	DESCRIPTION	DATE	EDITED BY	ECO#
C	UPDATED BOM REVISIONS	04/01/2014	TM	00648
D	UPDATED BOM REVISIONS	09/30/2014	TM	00664
E	CLARIFIED AIR LINE TROUGH DISTANCES, WAS 25 TO BOLT HOLE NOW 69 TO AIR FITTING HOLE, WAS 25 TO BOLT HOLE NOW 69 TO AIR FITTING HOLE, WAS 25 NOW 19, WAS 20 NOW 32, UPDATED BOM REVISIONS	06/01/2015	TM	00683



ITEM NO	PART NUMBER	DESCRIPTION	QTY	REV
1	5766188	HD-9/9XW CROSSTUBE, LARGE WINDOW	1	B
2	5620130	HD-7/7500/9 SERIES CROSS TUBE END PLATE #1	1	J
3	5620131	HD-7/7500/9 SERIES CROSS TUBE END PLATE #2	1	J
4	5620132	HD-7/7500/9 SERIES CROSS TUBE END PLATE #3	1	J
5	5620133	HD-7/7500/9 SERIES CROSS TUBE END PLATE #4	1	J
6	5760010	HD-7/9 SERIES CROSSTUBE SAFETY BLOCK	2	B
7	5755018	AIR LINE TROUGH Ø13 x Ø9.8 x 297	1	C
8	5755020	AIR LINE TROUGH Ø13 x Ø9.8 x 918	1	C
9	5755022	AIR LINE TROUGH Ø13 x Ø9.8 x 121	2	B
10	5755021	AIR LINE TROUGH Ø13 x Ø9.8 x 184	1	B
11	5735460	HD-7W/7XW/9/9XW CROSS TUBE STRAP	2	A

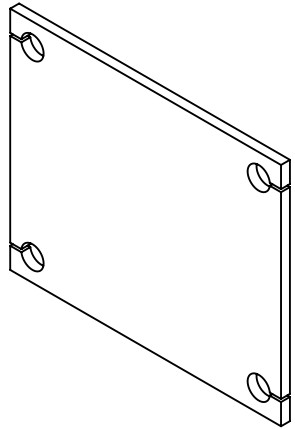
DO NOT SCALE DRAWING		NAME	DATE	 <b>BendPak.</b> 1645 LEMONWOOD DR. SANTA PAULA, CA 93060	
DIMENSIONS ARE IN MM TOLERANCES: 0. = ±1.5 0.0 = ±0.5  ANGULAR: 0. = ±2°  SURFACE FINISH 1.6 ISO Ra µm FOR MACHINED SURFACES UNLESS OTHERWISE SPECIFIED		DRAWN	TM	11/16/2012	TITLE: HD-9/9XW CROSSTUBE WELDMENT, LARGE WINDOW
		CHECKED	CA	08/26/2015	
		THIRD ANGLE PROJECTION			SIZE DWG. NO. REV
		<p><b>PROPRIETARY AND CONFIDENTIAL</b></p> <p>THE INFORMATION CONTAINED IN THIS DRAWING IS THE SOLE PROPERTY OF <b>BENDPAK INC.</b>, ANY REPRODUCTION IN PART OR AS A WHOLE WITHOUT THE WRITTEN PERMISSION OF <b>BENDPAK INC.</b> IS PROHIBITED.</p>			A 5600715 E
		SCALE: 1:15			SHEET 1 OF 2

**NOTE: UNLESS OTHERWISE SPECIFIED.**

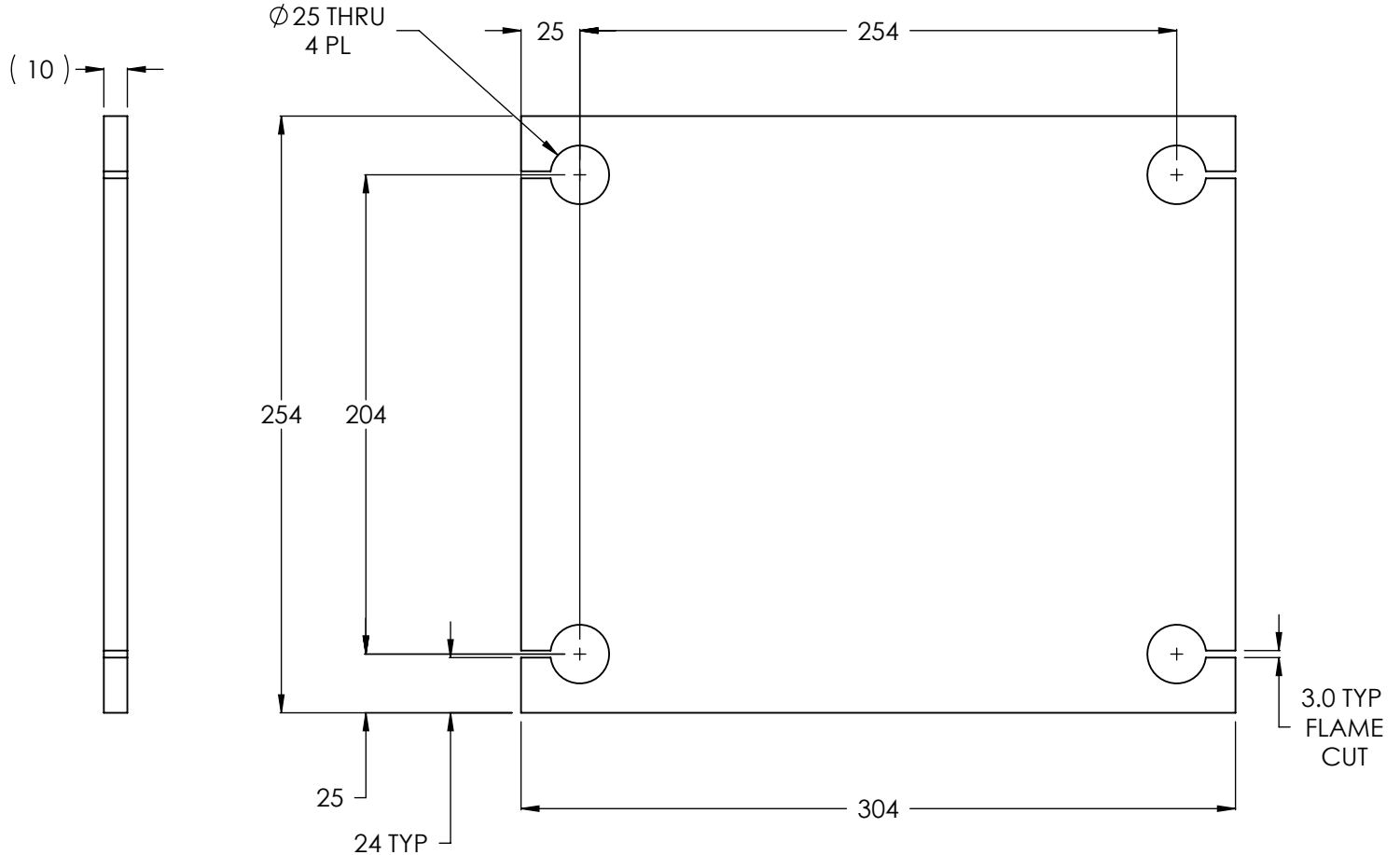
- BREAK AND DEBURR ALL SHARP EDGES 0.3mm
- REMOVE ALL WELD SPLATTER
- PAINT BENDPAK BLUE

NEXT ASSEMBLY  
5215622



PROPRIETARY AND CONFIDENTIAL  
THE INFORMATION CONTAINED IN THIS DRAWING IS  
THE SOLE PROPERTY OF BENDPAK INC. ANY  
REPRODUCTION IN PART OR AS A WHOLE WITHOUT  
THE WRITTEN PERMISSION OF BENDPAK INC. IS  
PROHIBITED.



ISOMETRIC VIEW  
FOR REFERENCE ONLY  
DO NOT SCALE



REVISION				
REV.	DESCRIPTION	DATE	EDITED BY	ECO#
B	UPDATE SHEET TEMPLATE	03/31/2008	MT	00157
B-001	CHANGED SURFACE FINISH FROM 3.2 $\mu\text{m}$ TO 1.6 $\text{Ra } \mu\text{m}$	09/10/2008	GJ	00237
B-002	UPDATED NEXT ASSEMBLY	10/30/2008	AC	00174
B-003	UPDATED NEXT ASSEMBLY	11/12/2008	TM	00249
C	UPDATED TITLE TO REFLECT WHERE USED	02/26/2010	AC	00333
D	UPDATED TITLE TO REFLECT WHERE USED	06/02/2010	AC	00366
D-001	UPDATED NEXT ASSEMBLIES	11/01/2011	TM	00487

DO NOT SCALE DRAWING		NAME		DATE		 <b>BendPak</b> <small>PROVIDING AUTOMOTIVE SERVICE SOLUTIONS</small>		1645 LEMONWOOD DR. SANTA PAULA, CA 93060	
NEXT ASSEMBLY 5600182 5600183 5600184 5600185 5600524 5600525 5600639 5600640 5600903 5600904 5620236 5620237	DIMENSIONS ARE IN MM TOLERANCES: 0. = ±1.5 0.0 = ±0.5		DRAWN	GJZ	02/29/2008		<div>TITLE: HD-7P/7500/9/14 SERIES POST BASE PLATE</div>		
	ANGULAR: 0. = ±2°		CHECKED						
	SURFACE FINISH 1.6 ISO Ra μm FOR MACHINED SURFACES UNLESS OTHERWISE SPECIFIED		<div>THIRD ANGLE PROJECTION</div> 				SIZE DWG. NO.		REV
MATERIAL: HR ASTM A36 OR Q235 GB/T 700		<div>PROPRIETARY AND CONFIDENTIAL</div> <div>THE INFORMATION CONTAINED IN THIS DRAWING IS THE SOLE PROPERTY OF <b>BENDPAK INC.</b> ANY REPRODUCTION IN PART OR AS A WHOLE WITHOUT THE WRITTEN PERMISSION OF <b>BENDPAK INC.</b> IS PROHIBITED.</div>				A 5731632		D	
SIZE: 10mm THK	SCALE: 1:3					SHEET 1 OF 1			

**NOTE: UNLESS OTHERWISE SPECIFIED.**

1. BREAK AND DEBURR ALL SHARP EDGES 0.3mm.

## PART SPECIFICATION FORM

<b>BENDPAK Number:</b>	5900123
<b>MRP Description:</b>	HD-9 INSTALLATION MANUAL
<b>Date:</b>	05/12/2016
<b>ECO :</b>	00741

### 1. Engineering Specification

#### Application:

INSTALLATION MANUAL

#### Detailed Description:

**WARNING**

**IMPORTANT SAFETY INSTRUCTIONS**  
PLEASE READ THE ENTIRE CONTENTS OF THIS MANUAL PRIOR TO INSTALLATION AND OPERATION. BY PROCEEDING YOU AGREE THAT YOU FULLY UNDERSTAND AND COMPREHEND THE FULL CONTENTS OF THIS MANUAL. FAILURE TO OPERATE THIS EQUIPMENT AS DIRECTED MAY CAUSE INJURY OR DEATH.

**EUROPEAN USERS**  
400V/50HZ SUPPLY DETAILS ARE INCLUDED WITH ELECTRICAL CONNECTION BOX. CHECK CABLE SUPPLY WIRING DETAILS IN THIS MANUAL.

**INSTALLATION AND OPERATION MANUAL**  
**9,000 POUND CAPACITY**  
**COMMERCIAL GRADE**  
**FOUR-POST LIFTS**

**MODELS:**  
HD-9ST  
HD-9  
HD-9STX  
HD-9XW  
HD-9XL

**READ FIRST**

**Keep this operation manual near the machine at all times. Make sure that ALL USERS read this manual.**

**RECEIVING**  
The shipment should be thoroughly inspected as soon as it is received. The signed Bill of Lading is acknowledgement by the shipping carrier as receipt of this product as listed in your invoice as being in a good condition of shipment. If any of these goods listed on this Bill of Lading are missing or damaged, do not accept goods until the shipping carrier makes a notation on the freight bill of the missing or damaged goods. Do this for your own protection.

**BE SAFE**  
Your new lift was designed and built with safety in mind. However, your overall safety can be increased with proper training and thoughtful operation on the part of the operator. DO NOT operate or repair this equipment without reading this manual and the important safety instructions shown inside. Keep this operation manual near the lift at all times. Make sure that ALL USERS read and understand this manual.

**BP BendPak®**  
PROVIDING AUTOMOTIVE SERVICE SOLUTIONS

1645 Lemonwood Dr.  
Santa Paula, CA. 93060, USA  
Toll Free 1-800-253-2393  
Tel: 1-805-933-9970  
Fax: 1-805-933-9160  
www.bendpak.com

### 2. Vendor Information

Approved Vendor	Vendor Part #	Contact #	Preferred Vendor
1)			

## PART SPECIFICATION FORM

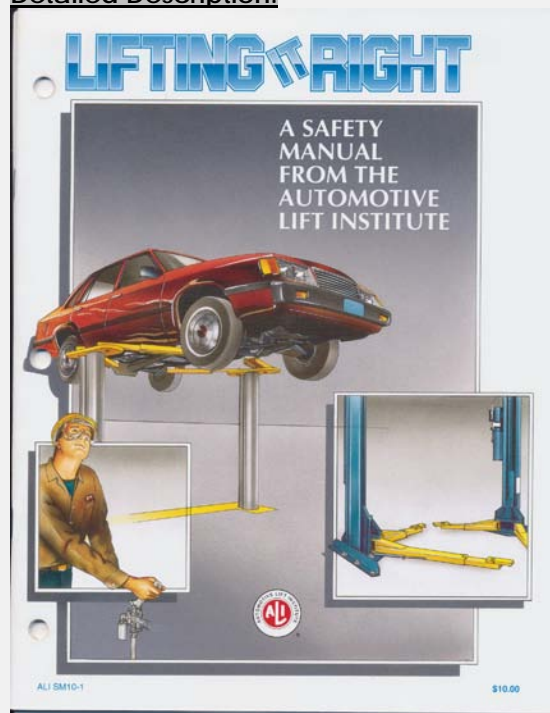
<b>BENDPAK Number:</b>	5900147
<b>MRP Description:</b>	SAFETY MANUAL ALI / SM 93-1
<b>Date:</b>	12/28/2010
<b>ECO :</b>	00431

### 1. Engineering Specification

**Application:**

ALI SAFETY MANUAL

**Detailed Description:**



### 2. Vendor Information

Approved Vendor	Vendor Part #	Contact #	Preferred Vendor
1)			

## PART SPECIFICATION FORM

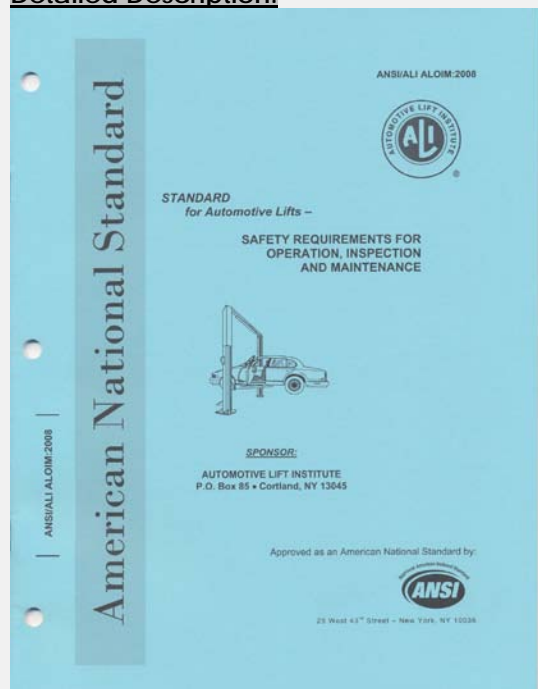
<b>BENDPAK Number:</b>	5900152
<b>MRP Description:</b>	ALIGN OIM OPERATION INSPECTION & MAINTENANCE
<b>Date:</b>	12/28/2010
<b>ECO :</b>	00431

### 1. Engineering Specification

**Application:**

ALI OPERATION INSPECTION & MAINTENANCE MANUAL

**Detailed Description:**



### 2. Vendor Information

Approved Vendor	Vendor Part #	Contact #	Preferred Vendor
1)			



## PART SPECIFICATION FORM

<b>BENDPAK Number:</b>	5905103
<b>MRP Description:</b>	WARNING ALI/WL 200
<b>Date:</b>	05/06/2013
<b>ECO :</b>	00593

### 1. Engineering Specification

#### Application:

ALI 4 POST SAFETY STICKER KIT

#### Detailed Description:



SIZE: 11" L x 8.5" W (279mm x 216mm)

### 2. Vendor Information

Approved Vendor	Vendor Part #	Contact #	Preferred Vendor
1)			

## PART SPECIFICATION FORM

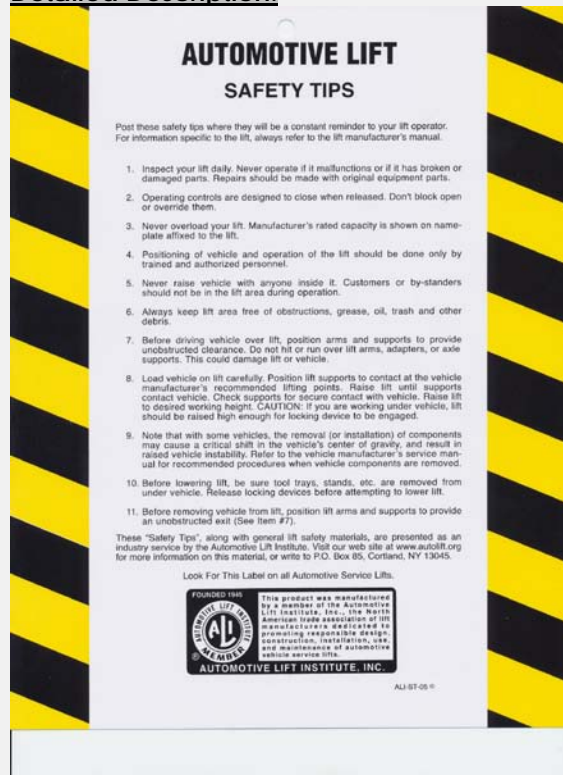
<b>BENDPAK Number:</b>	5905151
<b>MRP Description:</b>	SAFETY TIPS CARD ALI-ST 90
<b>Date:</b>	12/28/2010
<b>ECO :</b>	00431

### 1. Engineering Specification

#### Application:

ALI SAFETY TIPS

#### Detailed Description:



### 2. Vendor Information

Approved Vendor	Vendor Part #	Contact #	Preferred Vendor
1)			

## PART SPECIFICATION FORM

<b>BENDPAK Number:</b>	5905311
<b>MRP Description:</b>	BENDPAK LABEL; 4 x 38" WHITE INK
<b>Date:</b>	05/13/2015
<b>ECO :</b>	00689

### 1. Engineering Specification

**Application:**

BENDPAK LABEL

**Detailed Description:**



**SIZE:** 38" L x 4.25" W (965mm x 108mm)

- Material: Yellow Represents Clear Adhesive PET
- Size: 4.25"W x 38"H
- Thickness: 4 Mil
- Finish: Polished
- Ink: U.V. protected, Opaque White
- Print Process: Silk Screen, 85 line-screen (Opaque White ink, clear adhesive PET will fill in blank areas.)
- Lamination: Clear-gloss over-laminate for abrasion, chemical, and ultra violet protection

### 2. Vendor Information

Approved Vendor	Vendor Part #	Contact #	Preferred Vendor
1)			

# B

# E

# N

# D

# P

# A

# K

# BendPak

**ABOVE-GROUND LIFTS**



**BendPak®**  
PROVIDING AUTOMOTIVE SERVICE SOLUTIONS



1645 Lemonwood Drive  
Santa Paula, CA 93060  
U.S.A.  
(805) 933-9970  
[www.bendpak.com](http://www.bendpak.com)

P/N 5905311

## PART SPECIFICATION FORM

BENDPAK Number:	5905402
MRP Description:	MAX CAP DANGER 9K
Date:	05/06/2013
ECO :	00593

### 1. Engineering Specification

**Application:**

LIFT CAPACITY STICKER

**Detailed Description:**



SIZE: 5" L x 4" W (127mm x 100mm)

P/N 5905402

### 2. Vendor Information

Approved Vendor	Vendor Part #	Contact #	Preferred Vendor
1)			

# **DANGER**

## **THE MAXIMUM LIFTING CAPACITY FOR THIS LIFT IS DESCRIBED BELOW**

### **Maximum Lifting Capacity**

**9000 lbs. / 4082 kg**

### **Max. Lifting Cap. / Front of Lift Center**

**4500 lbs. / 2041 kg**

### **Max. Lifting Cap. / Rear of Lift Center**

**4500 lbs. / 2041 kg**

**Exceeding the weight capacity of this lift can damage lift and/or property and may cause personal harm, injury or death to operators and/or bystanders. All vehicles MUST be positioned on lift with CENTER OF GRAVITY midway between adapters and/or centered on runways. Damage to lift due to overloading or misuse IS NOT covered under warranty.**

## PART SPECIFICATION FORM

<b>BENDPAK Number:</b>	5905465
<b>MRP Description:</b>	MANUFACTURER LABEL
<b>Date:</b>	05/07/2013
<b>ECO :</b>	00593

### 1. Engineering Specification

#### Application:

MANUFACTURER LABEL

#### Detailed Description:

MFD. BY BENDPAK INC.

LIFT TYPE: SURFACE MOUNT      CAPACITY: MED/HVY DTY  
 POWER: ELECTRIC/HYDRAULIC      ANCHORS: AS EQUIPPED  
 INSTALLATION - SEE OWNERS GUIDE OR CONTACT FACTORY

#### SHIPPING DAMAGE CLAIMS

WHEN THIS EQUIPMENT IS SHIPPED, TITLE PASSES TO THE PURCHASER UPON RECEIPT FROM THE CARRIER. CONSEQUENTLY, CLAIMS FOR THE MATERIAL DAMAGED IN SHIPMENT MUST BE MADE BY THE PURCHASER AGAINST THE TRANSPORTATION COMPANY AT THE TIME SHIPMENT IS RECEIVED.

PLEASE READ ALL OPERATORS/USERS MANUAL(S) PRIOR TO INSTALLATION AND OPERATION. UNDERSTAND AND COMPREHEND THE FULL CONTENTS OF EACH MANUAL(S) PRIOR TO INSTALLATION AND OPERATION. DELIVER THE MANUAL(S) TO ALL OPERATORS. FAILURE TO OPERATE THIS EQUIPMENT AS DIRECTED MAY CAUSE INJURY OR DEATH.

#### IMPORTANT NOTE:

BENDPAK LIFTS ARE SUPPLIED WITH CONCRETE FASTENERS MEETING THE CRITERIA AS PRESCRIBED BY ASTM E488 - 96(2003). LIFT BUYERS ARE RESPONSIBLE FOR ANY SPECIAL REGIONAL STRUCTURAL AND/OR SEISMIC ANCHORING REQUIREMENTS SPECIFIED BY ANY OTHER AGENCIES AND/OR CODES SUCH AS THE UNIFORM BUILDING CODE (UBC) AND/OR INTERNATIONAL BUILDING CODE (IBC).



INTERNAL BAR CODE - FOR FACTORY AUDIT ONLY 34086

BPK	STYOT	P20KVR	X18576	HVY DTY/ GVR
				832

THE MANUFACTURE, USE, SALE OR IMPORT OF THIS PRODUCT MAY BE SUBJECT TO ONE OR MORE UNITED STATES PATENTS, OR PENDING APPLICATIONS, OWNED BY BENDPAK, INC.

ENGINEERED BY BENDPAK INC USA

MADE IN CHINA

SIZE: 5.125" L x 5.125" W (130mm x 130mm)

### 2. Vendor Information

Approved Vendor	Vendor Part #	Contact #	Preferred Vendor
1)			

MFD. BY BENDPAK INC.

LIFT TYPE: SURFACE MOUNT      CAPACITY: MED/HVY DTY

POWER: ELECTRIC/HYDRAULIC      ANCHORS: AS EQUIPPED

INSTALLATION - SEE OWNERS GUIDE OR CONTACT FACTORY

**SHIPPING DAMAGE CLAIMS**

WHEN THIS EQUIPMENT IS SHIPPED, TITLE PASSES TO THE PURCHASER UPON RECEIPT FROM THE CARRIER. CONSEQUENTLY, CLAIMS FOR THE MATERIAL DAMAGED IN SHIPMENT MUST BE MADE BY THE PURCHASER AGAINST THE TRANSPORTATION COMPANY AT THE TIME SHIPMENT IS RECEIVED.

PLEASE READ ALL OPERATORS/USERS MANUAL(S) PRIOR TO INSTALLATION AND OPERATION. UNDERSTAND AND COMPREHEND THE FULL CONTENTS OF EACH MANUAL(S) PRIOR TO INSTALLATION AND OPERATION. DELIVER THE MANUAL(S) TO ALL OPERATORS. FAILURE TO OPERATE THIS EQUIPMENT AS DIRECTED MAY CAUSE INJURY OR DEATH.

**IMPORTANT NOTE:**

BENDPAK LIFTS ARE SUPPLIED WITH CONCRETE FASTENERS MEETING THE CRITERIA AS PRESCRIBED BY ASTM E488 - 96(2003). LIFT BUYERS ARE RESPONSIBLE FOR ANY SPECIAL REGIONAL STRUCTURAL AND/OR SEISMIC ANCHORING REQUIREMENTS SPECIFIED BY ANY OTHER AGENCIES AND/OR CODES SUCH AS THE UNIFORM BUILDING CODE (UBC) AND/OR INTERNATIONAL BUILDING CODE (IBC).



INTERNAL BAR CODE - FOR FACTORY AUDIT ONLY 34086

BPK	STYOT	P20KVR	X18576	HVY DTY/ GVR 832
-----	-------	--------	--------	---------------------

THE MANUFACTURE, USE, SALE OR IMPORT OF THIS PRODUCT MAY BE SUBJECT TO ONE OR MORE UNITED STATES PATENTS, OR PENDING APPLICATIONS, OWNED BY BENDPAK, INC.

ENGINEERED BY BENDPAK INC USA

MADE IN CHINA



## PART SPECIFICATION FORM

BENDPAK Number:	5905556
MRP Description:	4-POST SAFETY DECAL
Date:	05/06/2013
ECO :	00593

### 1. Engineering Specification

#### Application:

4-POST SAFETY DECAL

#### Detailed Description:



SIZE: 23" L x 4" W (584mm x 100mm)

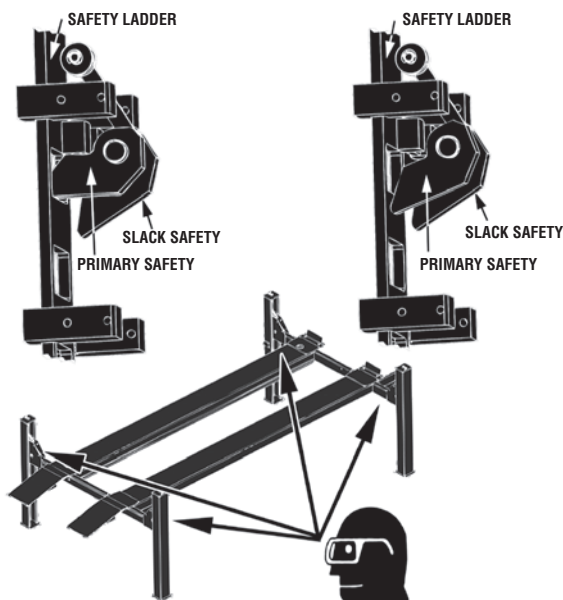
### 2. Vendor Information

Approved Vendor	Vendor Part #	Contact #	Preferred Vendor
1)			

# DANGER

**SAFETY LOCKS ENGAGED  
– OK TO PROCEED –**

**SAFETY LOCK NOT ENGAGED  
– REMAIN CLEAR –**



## **VISUALLY CONFIRM THAT ALL PRIMARY SAFETY LOCKS ARE ENGAGED BEFORE ENTERING WORK AREA.**

Suspension components used on this lift are intended to raise and lower lift only and are NOT meant to be load-holding devices. Remain clear of elevated lift unless visual confirmation is made that all primary safety locks are fully engaged and the lift is LOWERED onto the safety locks. Refer to installation/operation manual for proper safety lock procedures and/or further instruction.

# WARNING

## **WIRE ROPE INSPECTION AND MAINTENANCE**

- Lifting cables should be replaced every (3) three years or when visible signs of damage are apparent. DO NOT USE LIFT WITH DEFECTIVE OR WORN CABLES.
- Wire rope should be maintained in a well-lubricated condition at all times. Wire rope is only fully protected when each wire strand is lubricated both internal and external. Excessive wear will shorten the life of the wire rope. The factory suggests wire rope lubricant that penetrates to the core of the rope and provides long-term lubrication between each individual strand. In order to make sure that the inner layers of the rope remain well lubricated, lubrication should be carried out at intervals not exceeding three (3) months during operation.
- All sheaves and guide rollers in contact with the moving wire rope should be given regular visual checks for surface wear and lubricated to make sure that they run freely. This operation should be carried out at appropriate intervals generally not exceeding three (3) months during operation. For all sheave axles, the factory recommends standard wheel bearing grease. For all sheaves and/or guide rollers, the factory recommends 90-WT gear oil or similar heavy lubricant applied by any method including pump/spray dispensing, brush, hand and/or swabbing.

**Failure to read, understand and follow these instructions may cause death or serious injury. Read and understand these instructions before using lift.**

## **IMPORTANT OPERATION / MAINTENANCE INSTRUCTIONS - PLEASE READ**

### **TO RAISE LIFT**

- ✓ Position vehicle tires at the center of each runway.
- ✓ Set parking brake or use wheel chock to hold vehicle in position.
- ✓ Before raising vehicle, be sure all personnel are clear of lift and surrounding area. Pay careful attention to overhead clearances.
- ✓ Raise lift to desired height by pressing push button on power unit.
- ✓ Maintain visual contact with vehicle and surrounding area at all times while lowering lift.
- ✓ **STOP IMMEDIATELY** if load shifts or becomes unlevel.
- ✓ After vehicle is raised to desired height, lower lift onto the nearest safety lock. Do not allow cables to become excessively slack.
- ✓ **ALWAYS INSURE ALL PRIMARY SAFETY LOCKS ARE ENGAGED** before entering work area.

### **TO LOWER LIFT**

- ✓ Before lowering vehicle, be sure all personnel, tools and equipment are clear of lift and surrounding area.
- ✓ Raise lift by pressing **RAISE BUTTON** on power unit. Elevate lift at least two inches to allow adequate clearance for locks to clear.
- ✓ Press push button **AIR SAFETY VALVE** and **HOLD**.
- ✓ Lower vehicle by pressing power unit lowering handle until lift has descended completely.
- ✓ When lowering lift **PAY CAREFUL ATTENTION** that all personnel and objects are kept clear.
- ✓ **ALWAYS** keep a visual line of site on lift **AT ALL TIMES**.
- ✓ **ALWAYS** make sure that **ALL LOCKS** are disengaged. If one of the locks inadvertently engages on descent, lift and/or vehicle may disrupt causing personal injury or death.

### **REQUIRED MONTHLY MAINTENANCE**

- ✓ **ALWAYS** consult operation manual for factory recommended maintenance.
- ✓ Adjust lift cables to ensure lift raises level and safety locks engage simultaneously.
- ✓ Check all chain/cable connections, bolts and pins to insure proper mounting.
- ✓ Visually inspect safety locks for proper operation.
- ✓ Visually inspect concrete floor. **DO NOT USE LIFT** if concrete foundation shows signs of deterioration.
- ✓ Inspect all anchor bolts and retighten if necessary.
- ✓ Check columns for squareness and plumb.
- ✓ Inspect all bolts and/or fasteners making sure they are properly secured.
- ✓ Make a visual inspection of **ALL MOVING PARTS** and check for excessive signs of wear.
- ✓ Replace **ALL FAULTY PARTS** before lift is put back into operation.

### **WARNING**

1. **WARNING:** If cement anchor bolts are loose, or any component of the lift is found to be defective, **DO NOT USE LIFT!**
2. Never operate the lift with any person or equipment below.
3. Never exceed rated capacity.
4. Always insure safety locks are engaged before any attempt is made to work on or near vehicle.
5. Never leave lift in an elevated position unless the safety locks are engaged.
6. Do not permit electric motor to get wet! Motor damage caused by dampness is not covered under warranty.

## PART SPECIFICATION FORM


<b>BENDPAK Number:</b>	5905940
<b>MRP Description:</b>	PRODUCT DATA LABEL
<b>Date:</b>	05/06/2013
<b>ECO :</b>	00593

### 1. Engineering Specification

**Application:**

PRODUCT DATA LABEL

**Detailed Description:**



SANTA PAULA, CA USA  
 WWW.BENDPAK.COM

---

LIFT TYPE: SURFACE MOUNT CAP: MED/HVY DTY MFG. BPK SEE DATA PLATE FOR PRODUCT DETAILS  
 POWER: ELECTRIC/HYDRAULIC INSTALLATION - SEE OWNERS GUIDE OR CONTACT FACTORY

---

SAFETY INSTRUCTIONS: IF ATTACHMENTS, ACCESSORIES OR CONFIGURATION MODIFYING COMPONENTS THAT ARE LOCATED IN THE LOAD PATH, AFFECT OPERATION OF THE LIFT, AFFECT THE LIFT ELECTRICAL LISTING OR AFFECT INTENDED VEHICLE ACCOMMODATION ARE USED ON THIS LIFT AND, IF THEY ARE NOT CERTIFIED FOR USE ON THIS LIFT, THEN THE CERTIFICATION OF THIS LIFT SHALL BECOME NULL AND VOID. CONTACT THE PARTICIPANT FOR INFORMATION PERTAINING TO CERTIFIED ATTACHMENTS, ACCESSORIES OR CONFIGURATION MODIFYING COMPONENTS.

BENDPAK LIFTS ARE SUPPLIED WITH CONCRETE FASTENERS MEETING THE CRITERIA AS PRESCRIBED BY ASTM E488 - 96(2003). LIFT BUYERS ARE RESPONSIBLE FOR ANY SPECIAL REGIONAL STRUCTURAL AND/OR SEISMIC ANCHORING REQUIREMENTS SPECIFIED BY ANY OTHER AGENCIES AND/OR CODES SUCH AS THE UNIFORM BUILDING CODE (UBC) AND/OR INTERNATIONAL BUILDING CODE (IBC).

THE MANUFACTURE, USE, SALE OR IMPORT OF THIS PRODUCT MAY BE SUBJECT TO ONE OR MORE UNITED STATES PATENTS, OR PENDING APPLICATIONS, OWNED BY BENDPAK, INC.  
 DO NOT REMOVE      ENGINEERED BY BENDPAK INC. USA      MADE IN CHINA

SIZE: 2.3" L x 4.5" W (58mm x 114mm)

### 2. Vendor Information

Approved Vendor	Vendor Part #	Contact #	Preferred Vendor
1)			



SANTA PAULA, CA USA

WWW.BENDPAK.COM

PN 5905940

**LIFT TYPE: SURFACE MOUNT   CAP: MED/HVY DTY   MFG. BPK   SEE DATA PLATE FOR PRODUCT DETAILS**

**POWER: ELECTRIC/HYDRAULIC                      INSTALLATION - SEE OWNERS GUIDE OR CONTACT FACTORY**

SAFETY INSTRUCTIONS: IF ATTACHMENTS, ACCESSORIES OR CONFIGURATION MODIFYING COMPONENTS THAT ARE LOCATED IN THE LOAD PATH, AFFECT OPERATION OF THE LIFT, AFFECT THE LIFT ELECTRICAL LISTING OR AFFECT INTENDED VEHICLE ACCOMMODATION ARE USED ON THIS LIFT AND, IF THEY ARE NOT CERTIFIED FOR USE ON THIS LIFT, THEN THE CERTIFICATION OF THIS LIFT SHALL BECOME NULL AND VOID. CONTACT THE PARTICIPANT FOR INFORMATION PERTAINING TO CERTIFIED ATTACHMENTS, ACCESSORIES OR CONFIGURATION MODIFYING COMPONENTS.

BENDPAK LIFTS ARE SUPPLIED WITH CONCRETE FASTENERS MEETING THE CRITERIA AS PRESCRIBED BY ASTM E488 - 96(2003). LIFT BUYERS ARE RESPONSIBLE FOR ANY SPECIAL REGIONAL STRUCTURAL AND/OR SEISMIC ANCHORING REQUIREMENTS SPECIFIED BY ANY OTHER AGENCIES AND/OR CODES SUCH AS THE UNIFORM BUILDING CODE (UBC) AND/OR INTERNATIONAL BUILDING CODE (IBC).

THE MANUFACTURE, USE, SALE OR IMPORT OF THIS PRODUCT MAY BE SUBJECT TO ONE OR MORE UNITED STATES PATENTS, OR PENDING APPLICATIONS, OWNED BY BENDPAK, INC.

DO NOT REMOVE

ENGINEERED BY BENDPAK INC. USA

MADE IN CHINA

## PART SPECIFICATION FORM

<b>BENDPAK Number:</b>	5905953
<b>MRP Description:</b>	LABEL D (4-POST LIFTS CE)
<b>Date:</b>	12/04/2015
<b>ECO :</b>	00724

### 1. Engineering Specification

#### Application:

DATA SERIAL TAG, 4-POST LIFTS, CE

#### Detailed Description:



**BendPak** Santa Paula, CA USA  
www.bendpak.com

<b>MODEL NUMBER</b>	<b>SERIAL NUMBER</b>
<b>LIFT CAPACITY</b>	<b>DATE OF MFG.</b>
<b>ROLLING JACK MAX CAP.</b>	<b>MAX PSI / BAR</b>

**VOLTAGE**

☐ 110-240VAC, 50-60 Hz, 1 Ph   
 ☐ 208-440VAC, 50-60 Hz, 3 Ph  
☐ 208-240VAC, 50-60 Hz, 1 Ph   
 ☐ 208-440VAC, 50-60 Hz, 3 Ph

**DANGER!**  
Disconnect Power  
Before Servicing

CE ENE PM 5905953

SIZE: 3.38" L x 3.38" W  
(85.7mm x 85.7mm)

### 2. Vendor Information (Or for Reference)

Approved Vendor	Vendor Part #	Contact #	Preferred Vendor
1)			
2)			
OR BENDPAK ENGINEERING APPROVED EQUIVALENT			



Santa Paula, CA USA  
www.bendpak.com

**MODEL NUMBER**

**SERIAL NUMBER**

**LIFT CAPACITY**

**DESCRIPTION**

**ROLLING JACK MAX CAP.**

**MAX PSI / BAR**

**VOLTAGE**

☐ 110-240VAC, 50-60 Hz, 1 Ph

☐ 380-415VAC, 50-60 Hz, 3 Ph

☐ 208-240VAC, 50-60 Hz, 1 Ph

☐ 208-440VAC, 50-60 Hz, 3 Ph

**DATE OF MFG.**



**DANGER!**

Disconnect Power  
Before Servicing

WARRANTY VOID IF DATA PLATE IS REMOVED



PN 5905953



***2016***  
***CE-Approved***  
***4 Post Lifts***  
***Colors & Graphics***

***4/7/16***

**CONFIDENTIAL INFORMATION.**

You may not disclose, print, copy or disseminate this information.  
Unauthorized use is a violation of federal criminal law.



# 4 Post Lifts Product Decal Positioning

**A**



**Total of 4**

PN 5905311

**BPK Post Branding Decal-Large\_5905311.pdf:**

Material: Clear Adhesive PET

Size: 4.25"W x 38"H

Thickness: 4 Mil

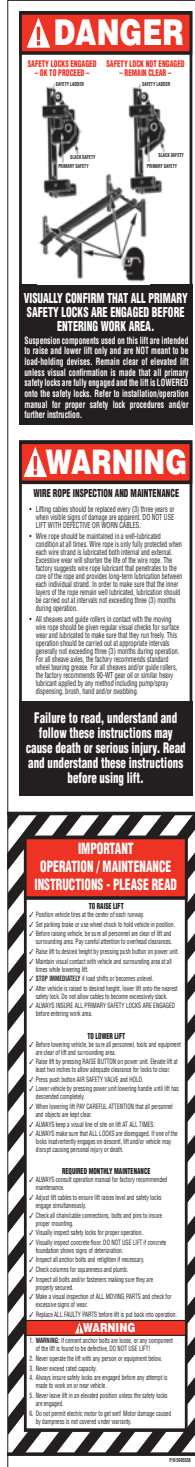
Finish: Polished

Ink: U.V. protected, Opaque White

Print Process: Silk Screen, 85 line-screen (Yellow color in file represents what should be clear PET material and SHOULD NOT print as Yellow ink. White area in file represents Opaque White ink.)

Lamination: Clear-gloss over-laminate for abrasion, chemical, and ultra violet protection

**B**



PN 5905556

**4\_Post\_Safety\_Decal.pdf:**

Size: 4"W x 23"H

Material: White Vinyl Pressure Sensitive Adhesive

Thickness: 4 Mil

Ink: U.V. protected CMYK 2/C Process

Finish: Polished

Print Process: Offset Lithography - 200 line-screen or 300 p.p.i. for digital

Lamination: Clear-gloss over-laminate for abrasion, chemical, and ultra violet protection

**C**



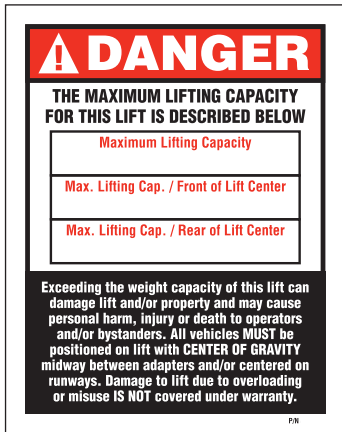
**Ali\_4\_Post\_labels.pdf:**

(Order Labels from ALI)



# 4 Post Lifts Product Decal Positioning

**\*D**



P/N 5905401 - Max Cap. Danger 7k  
P/N 5905695 - Max. Cap. Danger 7500  
P/N 5905402 - Max Cap. Danger 9k  
P/N 5905557 - Max. Cap. Danger 14K  
P/N 5905406 - Max Cap. Danger 18k  
P/N 5905407 - Max. Cap. Danger 27K  
P/N 5905408 - Max. Cap. Danger 35K  
P/N 5905409 - Max. Cap. Danger 40K

**\*Max. Cap. Danger.pdf:**

Size: 4"W x 5"H

Material: White Vinyl Pressure Sensitive Adhesive

Thickness: 4 Mil

Ink: U.V. protected CMYK 2/C Process

Finish: Polished

Print Process: Offset Lithography - 200 line-screen or 300 p.i. for digital

Lamination: Clear-gloss over-laminate for abrasion, chemical, and ultra violet protection

**\*E**



P/N 5905645 - NRTL\_Lifting\_Cap\_Label\_7K  
P/N 5905700 - NRTL\_Lifting\_Cap\_Label\_7500  
P/N 5905650 - NRTL\_Lifting\_Cap\_Label\_9k  
P/N 5905665 - NRTL\_Lifting\_Cap\_Label\_14k  
P/N 5905675 - NRTL\_Lifting\_Cap\_Label\_18k  
P/N 5905680 - NRTL\_Lifting\_Cap\_Label\_27k  
P/N 5905685 - NRTL\_Lifting\_Cap\_Label\_35K  
P/N 5905690 - NRTL\_Lifting\_Cap\_Label\_40K

**\*NRTL\_Lifting\_Cap\_Label\_.pdf:**

Size: 4.5"W x 3.25"H

Material: White Vinyl Pressure Sensitive Adhesive

Thickness: 4 Mil

Ink: U.V. protected CMYK 2/C Process

Finish: Polished

Print Process: Offset Lithography - 200 line-screen or 300 p.i. for digital

Lamination: Clear-gloss over-laminate for abrasion, chemical, and ultra violet protection

**\*DEPENDS ON LIFT MODEL AND CAPACITY**

**F**



PN 5905940

**Product\_Data\_Label\_5905940-New.pdf:**

Size: 4.5"W x 2.3"H

Material: White Vinyl Pressure Sensitive Adhesive

Thickness: 4 Mil

Ink: U.V. protected CMYK 2/C Process

Finish: Polished

Print Process: Offset Lithography - 200 line-screen or 300 p.i. for digital

Lamination: Clear-gloss over-laminate for abrasion, chemical, and ultra violet protection

**G**



PN 5905953

**2015\_Serial\_Tag-D-5905953.jpg:**

Size: 3"W x 3"H

Material: Material: 2 Mil. Matte Silver Polyester (Flex-PSE)

Print using thermal transfer printer with resin ribbon

Ink: 1 Color-Black

**H**



**ALI-Gold-Label-5905326.jpg**

**\*\*FOR ALI APPROVED LIFTS ONLY**

# 4 Post Lifts Product Decal Positioning

**\*\*FOR ALI APPROVED  
LIFTS ONLY**

**D, H, G, F**

**Front of Post**  
(Top to Bottom)

**E, C**

**Back of Post**  
(Top to Bottom)

**Place 1.25" from top of  
Power Unit bracket to  
the bottom of ALI Label.**

**B**

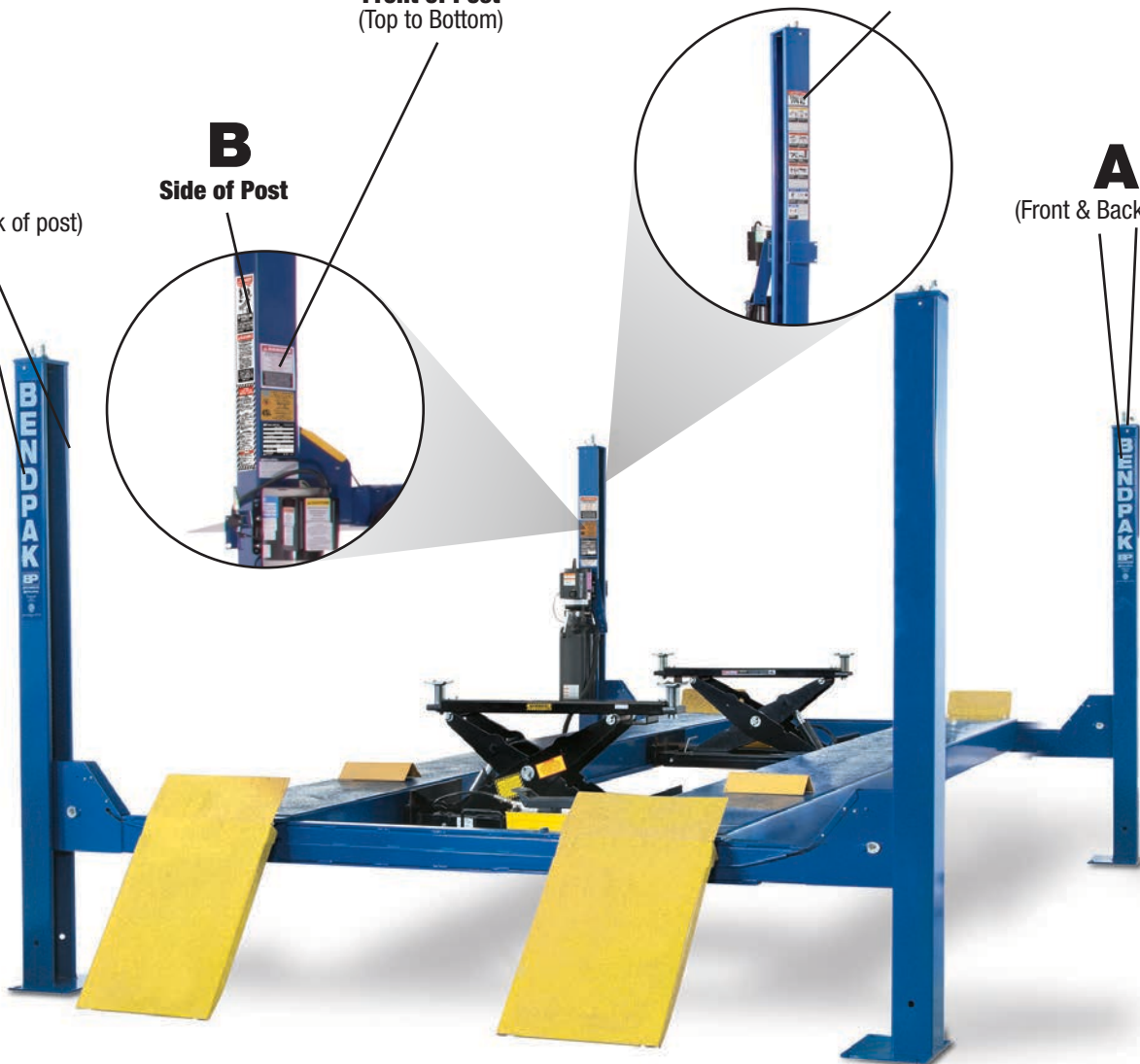
**Side of Post**

**A**

(Front & Back of post)

**A**

(Front & Back of post)



# 4 Post Lifts Packaging

<b>BP BendPak.</b> Santa Paula, CA USA www.bendpak.com	
MODEL NUMBER	SERIAL NUMBER
PN 5905285	

**Serial\_Tag\_New-2015\_Peel\_Off-5905285.jpg:**

Size: 3"W x 3"H

Material: 2 Mil. Matte Silver Polyester (Flex-PSE)

Print using thermal transfer printer with resin ribbon

Ink: 1 Color-Black

<b>PEEL OFF INVENTORY LABEL</b>	
MODEL NUMBER	SERIAL NUMBER
PN 5905285	

**Do not remove back sheet of this portion to prevent from sticking completely as shown in image.**



MFD. BY BENDPAK INC.

LIFT TYPE: SURFACE MOUNT CAPACITY: MED/HVY DTY

POWER: ELECTRIC/HYDRAULIC ANCHORS: AS EQUIPPED

INSTALLATION - SEE OWNERS GUIDE OR CONTACT FACTORY

**SHIPPING DAMAGE CLAIMS**  
WHEN THIS EQUIPMENT IS SHIPPED, TITLE PASSES TO THE PURCHASER UPON RECEIPT FROM THE CARRIER. CONSEQUENTLY, CLAIMS FOR THE MATERIAL DAMAGED IN SHIPMENT MUST BE MADE BY THE PURCHASER AGAINST THE TRANSPORTATION COMPANY AT THE TIME SHIPMENT IS RECEIVED.

**PLEASE READ ALL OPERATORS/USERS MANUAL(S) PRIOR TO INSTALLATION AND OPERATION. UNDERSTAND AND COMPREHEND THE FULL CONTENTS OF EACH MANUAL(S) PRIOR TO INSTALLATION AND OPERATION. DELIVER THE MANUAL(S) TO ALL OPERATORS. FAILURE TO OPERATE THIS EQUIPMENT AS DIRECTED MAY CAUSE INJURY OR DEATH.**

**IMPORTANT NOTE:**  
BENDPAK LIFTS ARE SUPPLIED WITH CONCRETE FASTENERS MEETING THE CRITERIA AS PRESCRIBED BY ASTM E488 - 96(2003). LIFT BUYERS ARE RESPONSIBLE FOR ANY SPECIAL REGIONAL STRUCTURAL AND/OR SEISMIC ANCHORING REQUIREMENTS SPECIFIED BY ANY OTHER AGENCIES AND/OR CODES SUCH AS THE UNIFORM BUILDING CODE (UBC) AND/OR INTERNATIONAL BUILDING CODE (IBC).



INTERNAL BAR CODE - FOR FACTORY AUDIT ONLY 34086

BPK | STYOT | P20KVR | X18576 | HVY DTY/ GVR

THE MANUFACTURE, USE, SALE OR IMPORT OF THIS PRODUCT MAY BE SUBJECT TO ONE OR MORE UNITED STATES PATENTS, OR PENDING APPLICATIONS, OWNED BY BENDPAK, INC.

ENGINEERED BY BENDPAK INC USA

MADE IN CHINA

**Manufacturer Packaging Label:**

Size: 5"W x 5"H

Material: White adhesive paper

Ink: U.V. protected CMYK 2/C Process

Print Process: Offset Lithography - 200 line-screen or 300 p.p.i. for digital