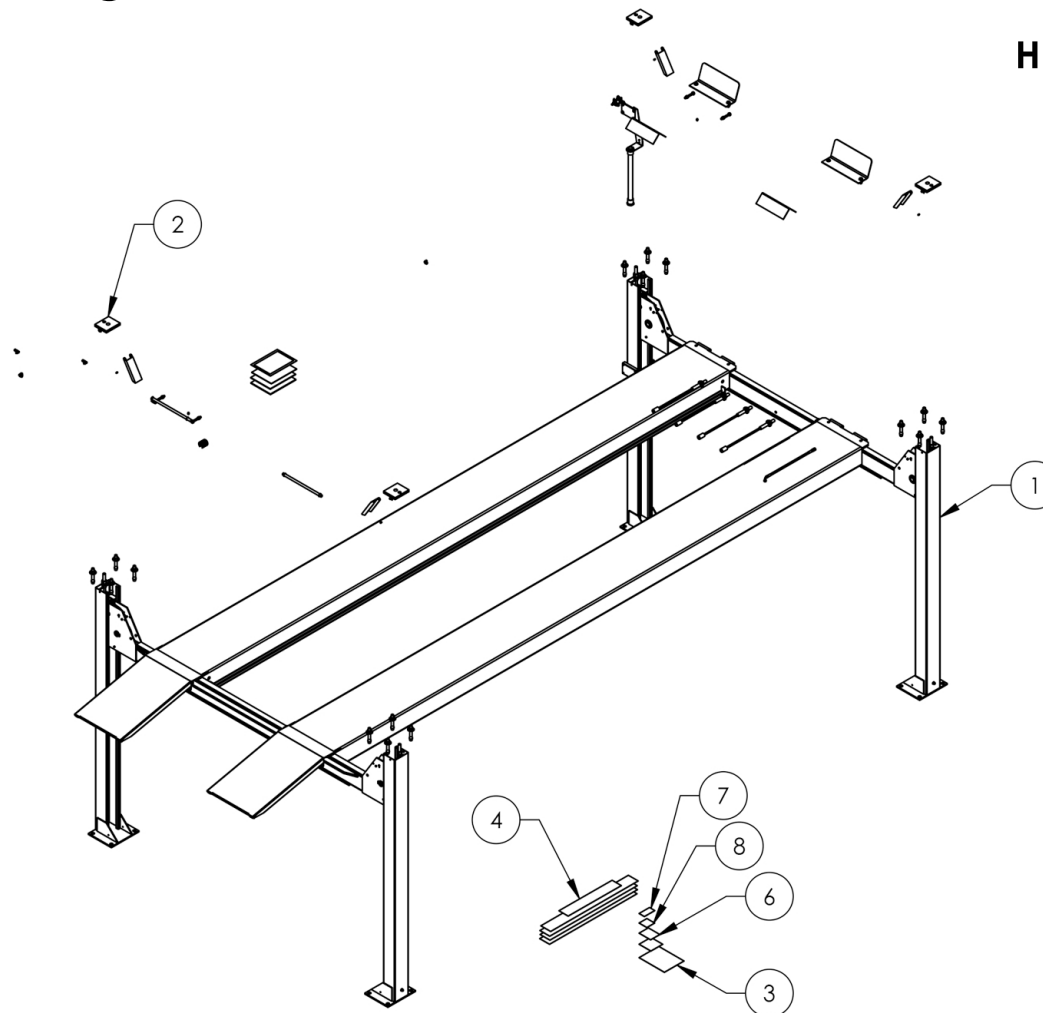


Service Manual

Service Parts & Diagrams

HDS-14X

BendPak SKU 5260521
HDS-14X Four-Post Car Lift
Version C
05/02/2016



This guide is a troubleshooting reference used for maintaining and servicing your BendPak product. It provides comprehensive information on identifying serviceable parts and components and assists in troubleshooting problems and performing assembly/disassembly procedures.



BendPak, Inc. Corporate Office

1645 Lemonwood Drive
Santa Paula, CA 93060 USA
Toll Free US/Canada: 1-800-253-2363
Fax: 1-805-933-9160
info@bendpak.com

Customer Service Desk / Warranty

Customer Service Representatives
Office Tel: 1-805-933-9970
Toll Free US/Canada: 1-800-253-2363
Fax: 1-805-933-9160
customerservice@bendpak.com

Parts Orders

Customer Service Representatives
Office Tel: 1-805-933-9970
Toll Free US/Canada: 1-800-253-2363
Fax: 1-805-933-9160
parts@bendpak.com

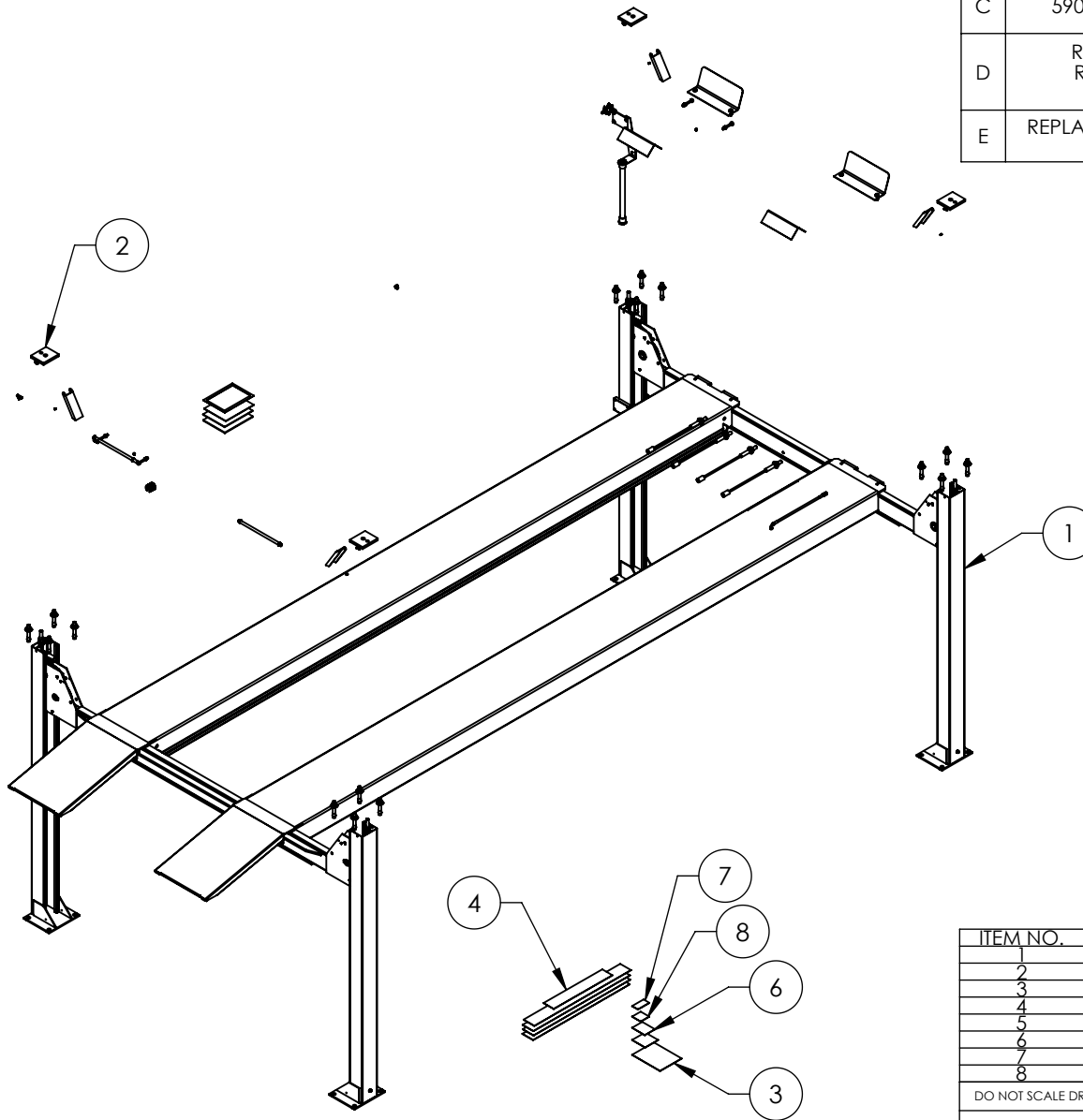
Domestic Sales & Service

USA Sales Representatives
Office Tel: 1-805-933-9970
Toll Free US/Canada: 1-800-253-2363
Fax: 1-805-933-9160
sales@bendpak.com

International Sales & Service

Office Tel: 1-805-933-9970
Exports Department: 1-805-933-9970 Ext. 192
Toll Free US/Canada: 1-800-253-2363
Fax: 1-805-933-9160
bpkexports@bendpak.com



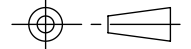
REVISION				
REV	DESCRIPTION	DATE	EDITED BY	ECO#
C	ADDED 5905103, 5905200, 5905465, 5905557, 5905940, AND 5930605, UPDATED BOM REVISIONS	08/13/2015	TM	00683
D	REPLACED 5930605 WITH 5905953, REPLACED 5905557 WITH 5905402, UPDATED BOM REVISIONS	12/10/2015	JM	00724
E	REPLACED 5905402 WITH 5905557, UPDATED BOM REVISIONS	12/23/2015	JM	00741

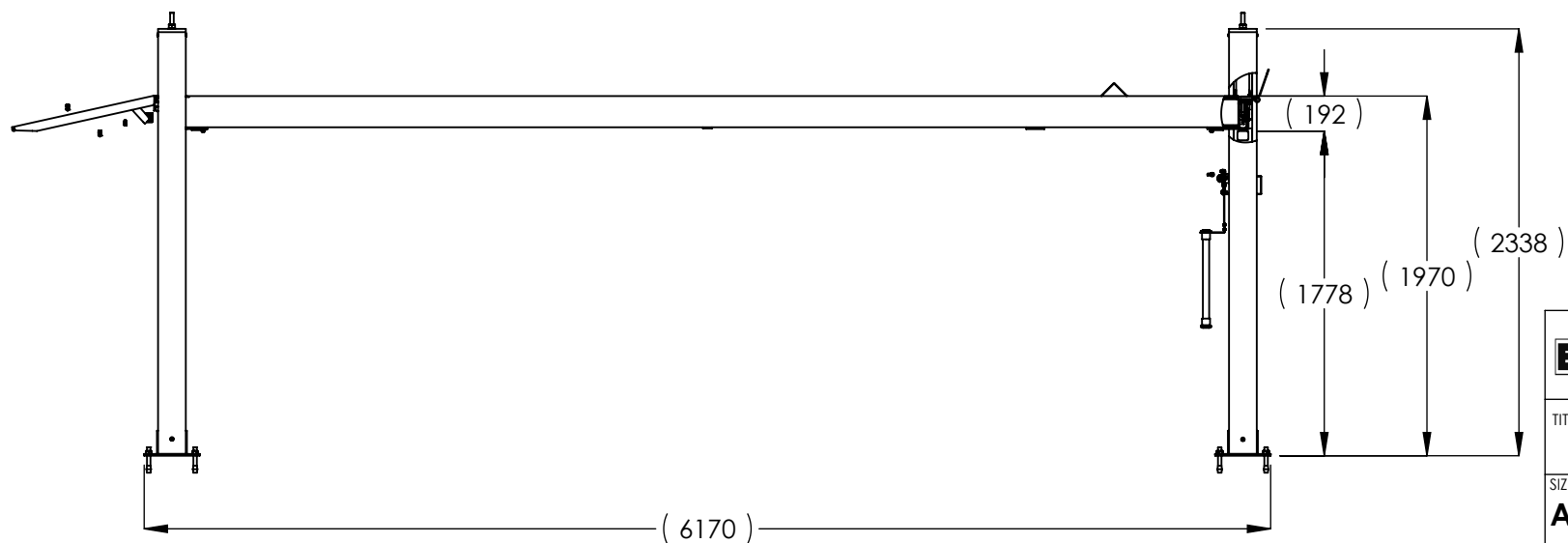
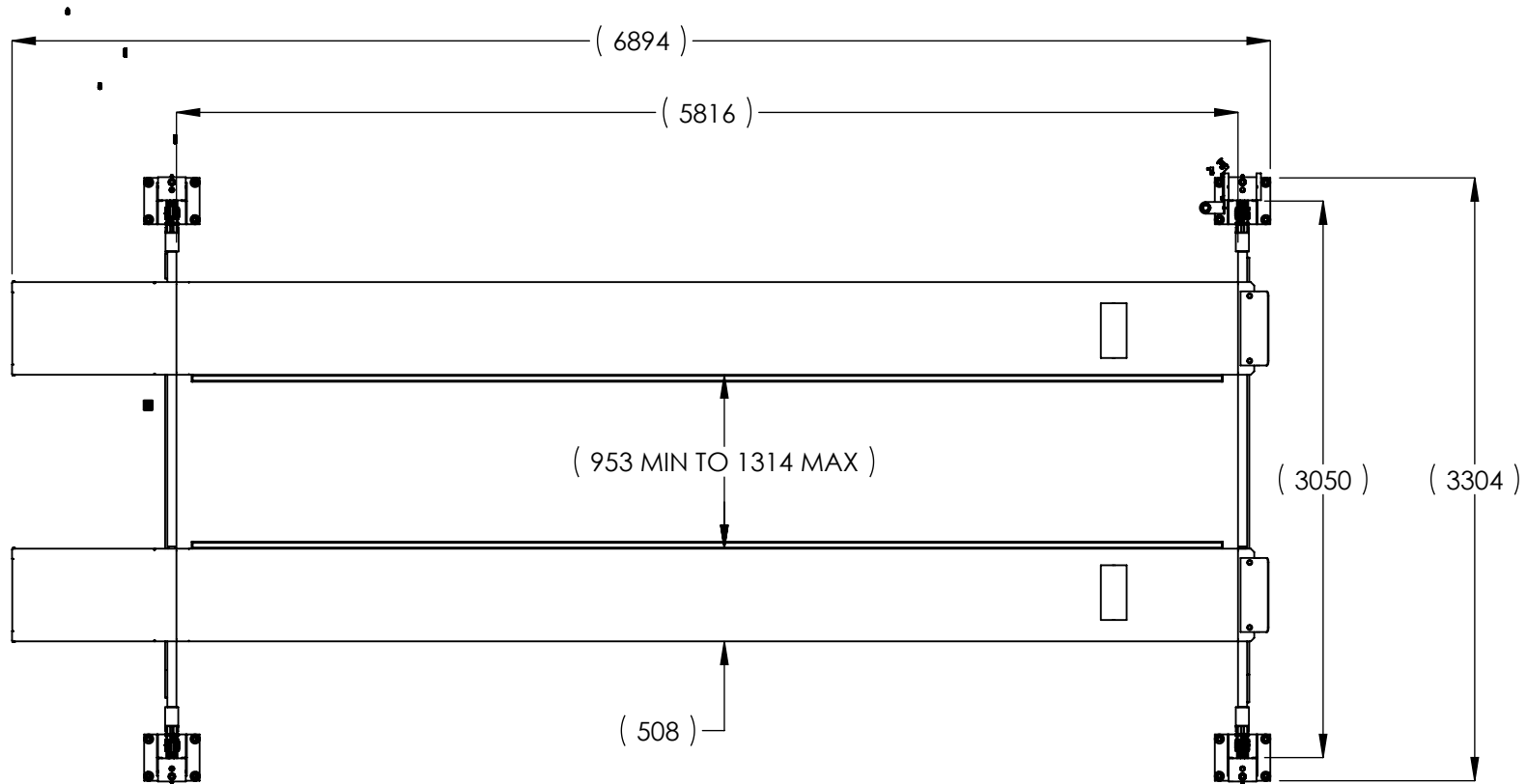



NOTE: UNLESS OTHERWISE SPECIFIED.

1. SEE SHIPPING INSTRUCTIONS FOR FINAL PACKAGING
2. ALL LABELS TO BE APPLIED TO POSTS AFTER PAINTING.
3. SEE ATTACHED LABEL PLACEMENT SHEET

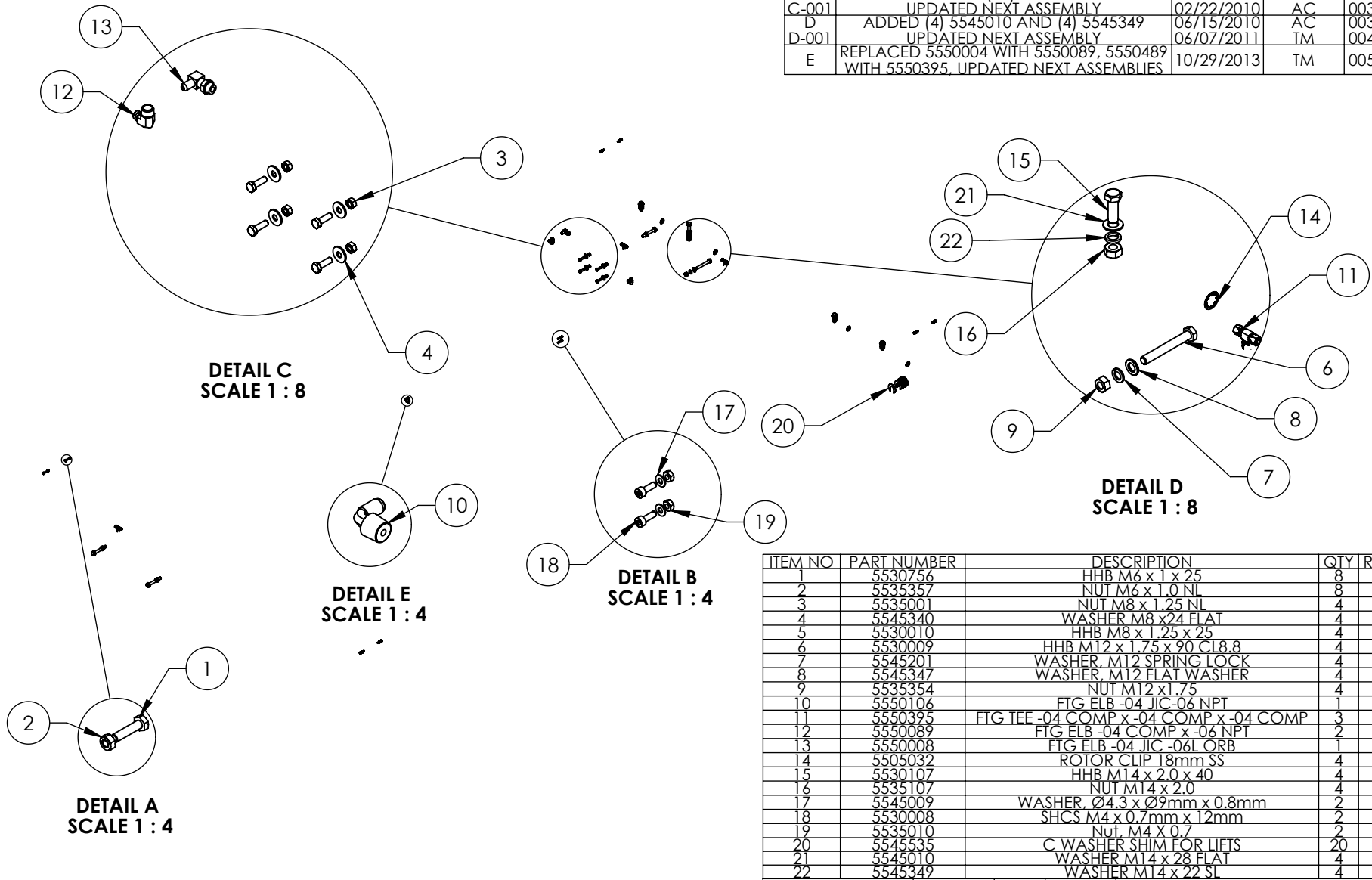
ITEM NO.	PART NUMBER	DESCRIPTION	QTY.	REV
1	5245399	HDS-14X LIFT SUPERSTRUCTURE	1	E
2	5250144	PARTS BOX HDS-14X	1	E
3	5905103	WARNING ALI/WL 200	1	---
4	5905200	4 POST DECAL KIT, LESS ALI	1	B
5	5905465	MANUFACTURER LABEL	1	---
6	5905557	MAX CAP DANGER 14K	1	---
7	5905940	PRODUCT DATA LABEL	1	---
8	5905953	SERIAL NUMBER INTERIOR TAG PLATE	1	---

DO NOT SCALE DRAWING		NAME		DATE		 BendPak. 1645 LEMONWOOD DR. RICKING AUTOMATE SERVICE SOLUTIONS SANTA PAULA, CA 93060	
DIMENSIONS ARE IN MM 		DRAWN	TM	08/12/2014		TITLE: HDS-14X PRODUCTION LIFT VER C (CE CERT)	
		CHECKED					
		THIRD ANGLE PROJECTION 					
PROPRIETARY AND CONFIDENTIAL THE INFORMATION CONTAINED IN THIS DRAWING IS THE SOLE PROPERTY OF BENDPAK INC. ANY REPRODUCTION IN PART OR AS A WHOLE WITHOUT THE WRITTEN PERMISSION OF BENDPAK INC. IS PROHIBITED.		SIZE DWG. NO.				REV	
		A 5260521				E	
		SCALE: 1:50				SHEET 1 OF 2	



 1645 LEMONWOOD DR. SANTA PAULA, CA 93060		
TITLE: HDS-14X PRODUCTION LIFT VER C (CE CERT)		
SIZE A	DWG. NO. 5260521	REV E
SCALE: 1:40		SHEET 2 OF 2

REVISION					
REV	DESCRIPTION	DATE	EDITED BY	ECO#	
C	ADDED (20) 5545535	12/22/2009	AC	00326	
C-001	UPDATED NEXT ASSEMBLY	02/22/2010	AC	00333	
D	ADDED (4) 5545010 AND (4) 5545349	06/15/2010	AC	00366	
D-001	UPDATED NEXT ASSEMBLY	06/07/2011	TM	00456	
E	REPLACED 5550004 WITH 5550089, 5550489 WITH 5550395, UPDATED NEXT ASSEMBLIES	10/29/2013	TM	00593	



ITEM NO	PART NUMBER	DESCRIPTION	QTY	REV
1	5530756	HHB M6 x 1 x 25	8	-
2	5535357	NUT M6 x 1.0 NL	8	-
3	5535001	NUT M8 x 1.25 NL	4	-
4	5545340	WASHER M8 x 24 FLAT	4	-
5	5530010	HHB M8 x 1.25 x 25	4	B
6	5530009	HHB M12 x 1.75 x 90 CL8.8	4	-
7	5545201	WASHER, M12 SPRING LOCK	4	-
8	5545347	WASHER, M12 FLAT WASHER	4	-
9	5535354	NUT M12 x 1.75	4	-
10	5550106	FTG ELB -04 JIC-06 NPT	1	-
11	5550395	FTG TEE -04 COMP x -04 COMP x -04 COMP	3	-
12	5550089	FTG ELB -04 COMP x -06 NPT	2	-
13	5550008	FTG ELB -04 JIC -06L ORB	1	-
14	5505032	ROTOR CLIP 18mm SS	4	-
15	5530107	HHB M14 x 2.0 x 40	4	-
16	5535107	NUT M14 x 2.0	4	-
17	5545009	WASHER, Ø4.3 x Ø9mm x 0.8mm	2	-
18	5530008	SHCS M4 x 0.7mm x 12mm	2	-
19	5535010	Nut, M4 X 0.7	2	-
20	5545535	C WASHER SHIM FOR LIFTS	20	-
21	5545010	WASHER M14 x 28 FLAT	4	-
22	5545349	WASHER M14 x 22 SL	4	-

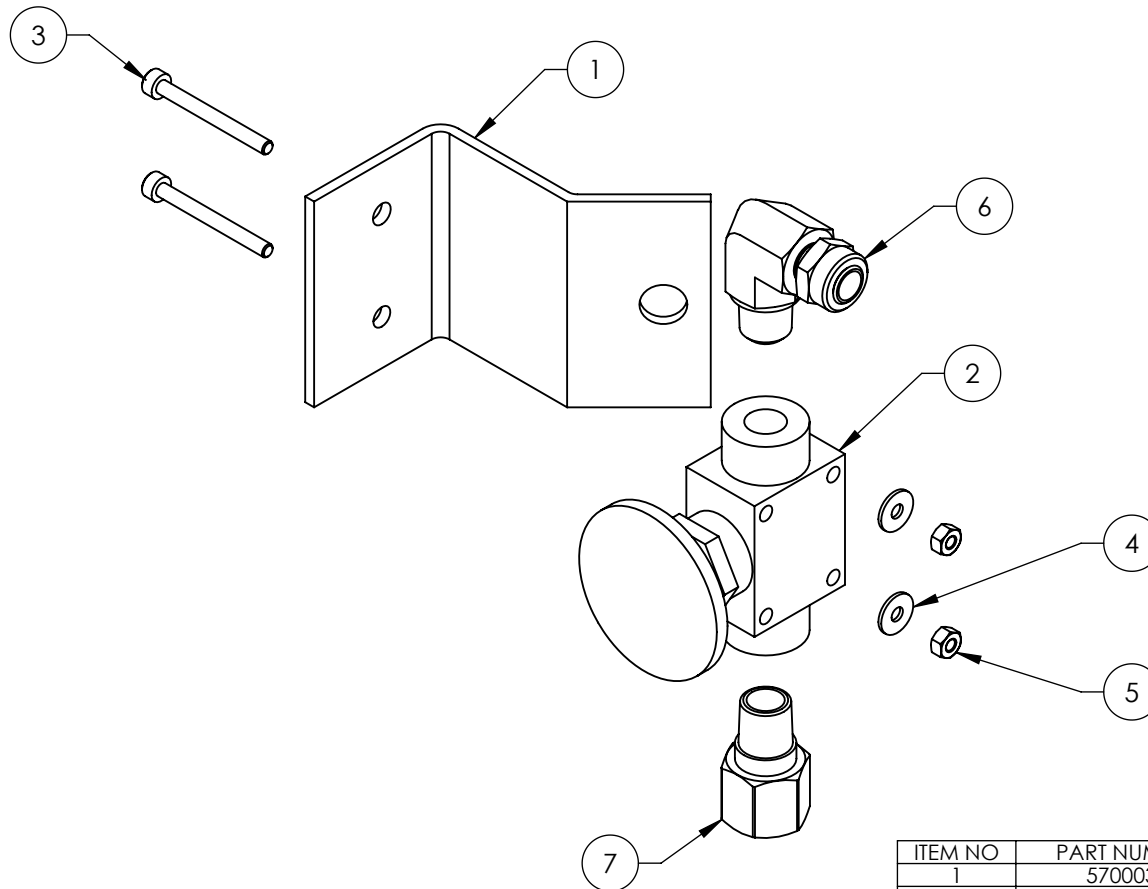
DO NOT SCALE DRAWING		NAME	DATE	1645 LEMONWOOD DR. SANTA PAULA, CA 93060
DIMENSIONS ARE IN MM		DRAWN	AC 08/08/2008	
		CHECKED		
		THIRD ANGLE PROJECTION		
MATERIAL: ---				TITLE: PARTS BAG HD/HDS-14 SERIES
SIZE: ---		PROPRIETARY AND CONFIDENTIAL THE INFORMATION CONTAINED IN THIS DRAWING IS THE SOLE PROPERTY OF BENDPAK INC. ANY REPRODUCTION IN PART OR AS A WHOLE WITHOUT THE WRITTEN PERMISSION OF BENDPAK INC. IS PROHIBITED.		SIZE DWG. NO. A 5174094
				REV E
SCALE: 1:30				SHEET 1 OF 1

NOTE: UNLESS OTHERWISE SPECIFIED.

1. SEE SHIPPING INSTRUCTIONS FOR FINAL PACKAGING

NEXT ASSEMBLY
5250143
5250144
5250191
5250194
5250195
5250196

REVISION				
REV	DESCRIPTION	DATE	EDITED BY	ECO#
D	UPDATED NEXT ASSEMBLY, ADDED 5550486	02/24/2010	AC	00333
D-001	UPDATED NEXT ASSEMBLY	01/21/2011	TM	00439
D-010	UPDATED NEXT ASSEMBLIES	07/24/2013	TM	00611
E	REPLACED 5550481 WITH 5550087	10/29/2013	TM	00593
F	REPLACED 5590240 WITH 5590175, UPDATED NEXT ASSEMBLIES	05/05/2015	MR	00683



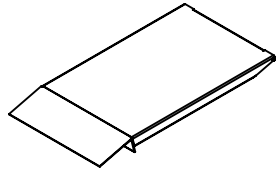
ITEM NO	PART NUMBER	DESCRIPTION	QTY	REV
1	5700031	ZERO ANGLE MTG BRACKET	1	C
2	5590175	PUSH BUTTON AIR VALVE	1	B
3	5530043	SHCS M3 x 0.5 x 30	2	-
4	5545024	WASHER M3 x 9mm	2	-
5	5535020	NUT M3 x 0.5 NL	2	-
6	5550087	FTG ELB -04 COMP x -02 NPT	1	-
7	5550486	FTG NPL -02 NPT x -04 F NPT	1	-

DO NOT SCALE DRAWING		NAME	DATE	1645 LEMONWOOD DR. SANTA PAULA, CA 93060
		DRAWN	AC	
		CHECKED	CA	
DIMENSIONS ARE IN MM 		THIRD ANGLE PROJECTION		TITLE:
				PUSH BUTTON AIR ASSEMBLY
		<small>PROPRIETARY AND CONFIDENTIAL THE INFORMATION CONTAINED IN THIS DRAWING IS THE SOLE PROPERTY OF BENDPAK INC. ANY REPRODUCTION IN PART OR AS A WHOLE WITHOUT THE WRITTEN PERMISSION OF BENDPAK INC. IS PROHIBITED.</small>		SIZE DWG. NO.
		A		5215096
				REV
				F
		SCALE: 2:3		SHEET 1 OF 1

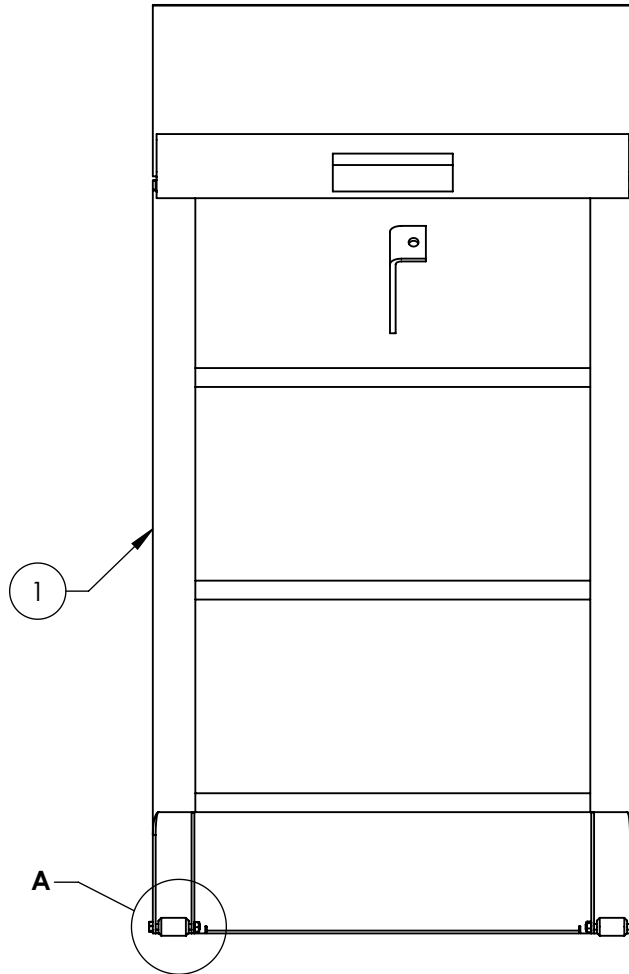
NOTE: UNLESS OTHERWISE SPECIFIED.

1. ASSEMBLE ITEMS AS SHOWN

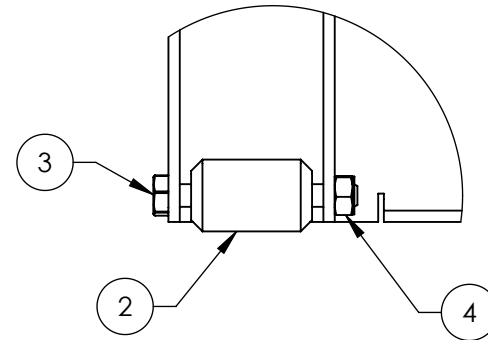
NEXT ASSEMBLY
HD/HDS/HDSO
SERIES
5250118
5250249
5250364



ISOMETRIC VIEW
FOR REFERENCE ONLY
DO NOT SCALE




REV	DESCRIPTION	DATE	EDITED BY	ECO#
E	ADDED HD/S-14 SERIES TO TITLE	10/05/2009	AC	00300
E-001	UPDATED NEXT ASSEMBLY	02/24/2010	AC	00333
F	REPLACED 5530064 WITH 5530097	06/03/2010	AC	00366
G	UPDATED BOM REVISION	07/30/2010	TM	00387
G-001	UPDATED NEXT ASSEMBLY	05/17/2011	TM	00456
G-002	UPDATED NEXT ASSEMBLY	10/28/2011	TM	00487
G-003	UPDATED NEXT ASSEMBLIES	05/16/2013	TM	00593
G-004	UPDATED NEXT ASSEMBLIES	08/13/2014	TM	00664



DETAIL A
SCALE 1 : 2

ITEM NO	PART NUMBER	DESCRIPTION	QTY	REV
1	5600138	HD/S-14 SERIES DRIVE UP RAMP WELDMENT	1	F
2	5716149	HD-7500/9, HD/S-14 SERIES DRIVE UP RAMP PLASTIC ROLLER	2	F
3	5530097	HHB M6 x 1.0 x 50	2	-
4	5535357	NUT M6 x 1.0 NL	2	-

DO NOT SCALE DRAWING	NAME	DATE	 BendPak. 1645 LEMONWOOD DR. SANTA PAULA, CA 93060	
	DRAWN	TM		
	CHECKED		TITLE: HD/S-14 SERIES DRIVE UP RAMP ASSEMBLY	
			SIZE	REV
			A	H
			SCALE: 1:8	
			SHEET 1 OF 1	

NEXT ASSEMBLY
5245397
5245398
5245399
5245400
5245401
5245402

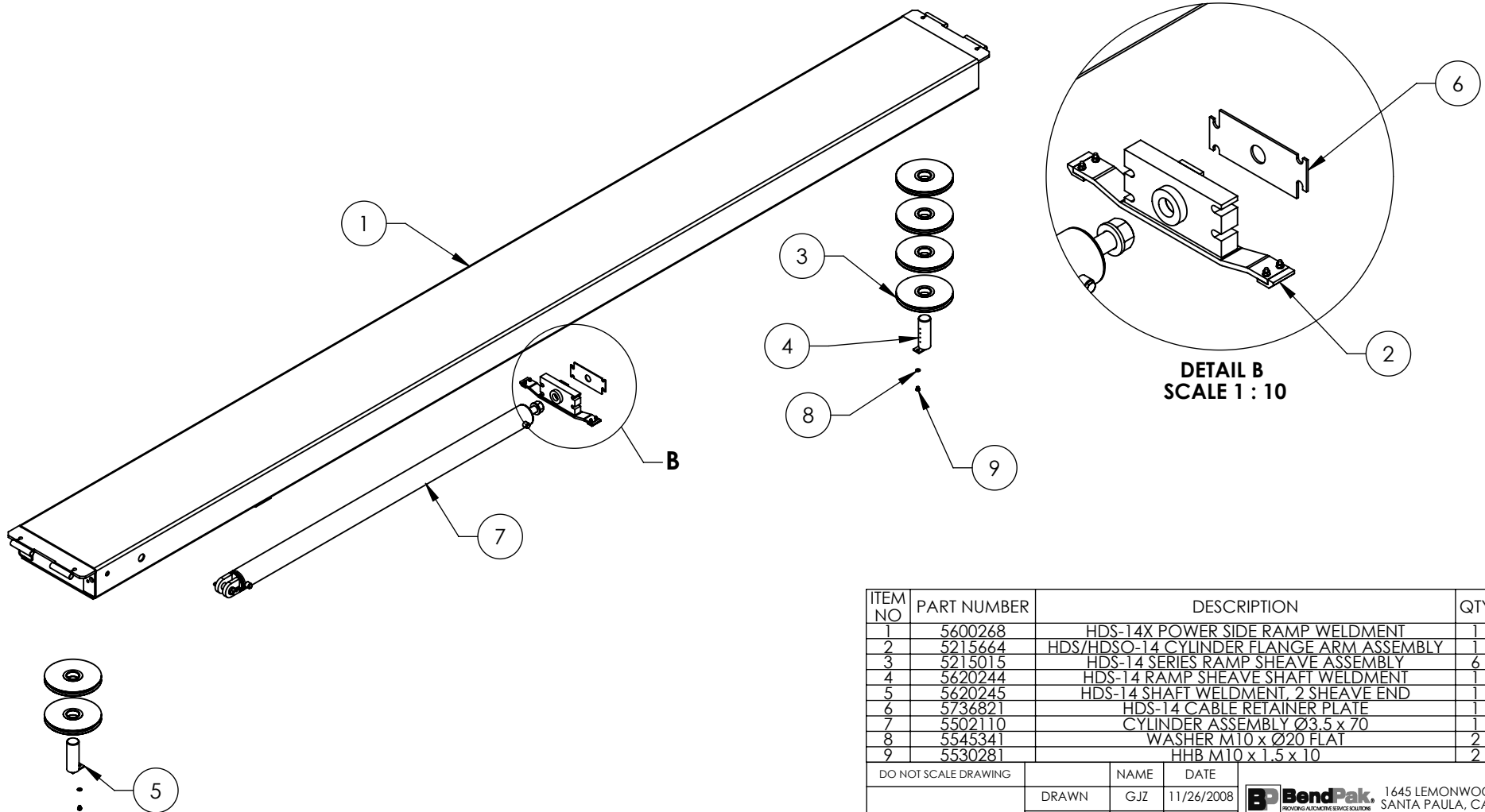


PROPRIETARY AND CONFIDENTIAL
THE INFORMATION CONTAINED IN THIS DRAWING IS
THE SOLE PROPERTY OF BENDPAK INC. ANY
REPRODUCTION IN PART OR AS A WHOLE WITHOUT
THE WRITTEN PERMISSION OF BENDPAK INC. IS
PROHIBITED.




NOTE: UNLESS OTHERWISE SPECIFIED.

- SEE SHIPPING INSTRUCTIONS FOR FINAL PACKAGING
- ASSEMBLE ITEMS AS SHOWN

REVISION				
REV	DESCRIPTION	DATE	EDITED BY	ECO#
K	REMOVED 5535027, 5545007 AND 5505350	01/14/2015	MR	00675
L	UPDATE BOM REVISION	04/29/2015	MR	00683
M	REMOVED 5550026	10/01/2015	TM	00724



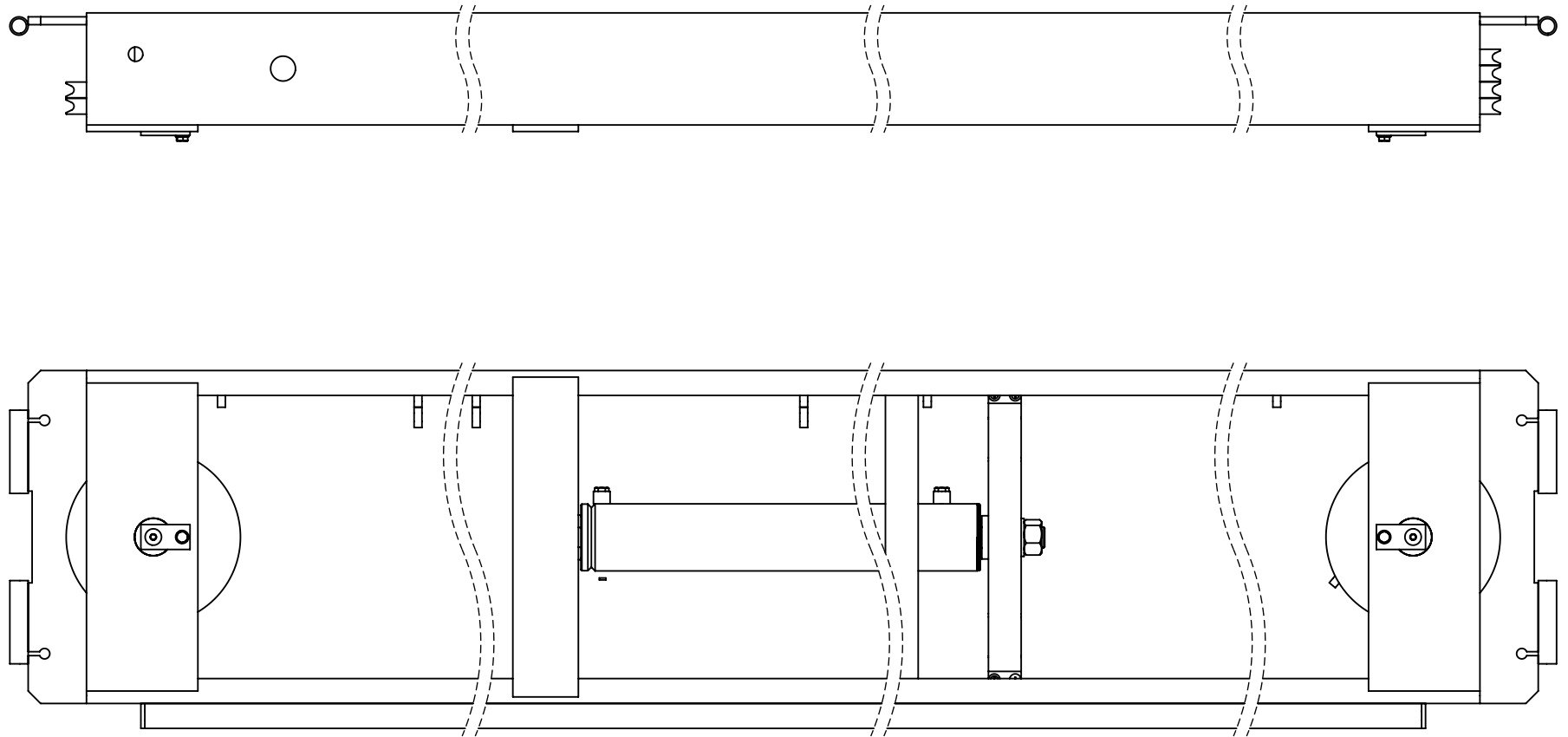
ITEM NO	PART NUMBER	DESCRIPTION	QTY	REV
1	5600268	HDS-14X POWER SIDE RAMP WELDMENT	1	E
2	5215664	HDS/HDSO-14 CYLINDER FLANGE ARM ASSEMBLY	1	A
3	5215015	HDS-14 SERIES RAMP SHEAVE ASSEMBLY	6	B
4	5620244	HDS-14 RAMP SHEAVE SHAFT WELDMENT	1	B
5	5620245	HDS-14 SHAFT WELDMENT, 2 SHEAVE END	1	B
6	5736821	HDS-14 CABLE RETAINER PLATE	1	A
7	5502110	CYLINDER ASSEMBLY Ø3.5 x 70	1	E
8	5545341	WASHER M10 x Ø20 FLAT	2	--
9	5530281	HHB M10 x 1.5 x 10	2	--


DO NOT SCALE DRAWING		NAME	DATE	 BendPak. 1645 LEMONWOOD DR. SANTA PAULA, CA 93060 <small>MOVING AUTOMOTIVE SERVICE SOLUTIONS</small>		
DRAWN		GJZ	11/26/2008			
CHECKED				TITLE: HDS-14X POWER SIDE RAMP ASSEMBLY		
THIRD ANGLE PROJECTION						
		PROPRIETARY AND CONFIDENTIAL THE INFORMATION CONTAINED IN THIS DRAWING IS THE SOLE PROPERTY OF BENDPAK INC. ANY REPRODUCTION IN PART OR AS A WHOLE WITHOUT THE WRITTEN PERMISSION OF BENDPAK INC. IS PROHIBITED.		SIZE	DWG. NO.	REV
				A	5215241	M
				SCALE: 1:28		SHEET 1 OF 2

NOTE: UNLESS OTHERWISE SPECIFIED.

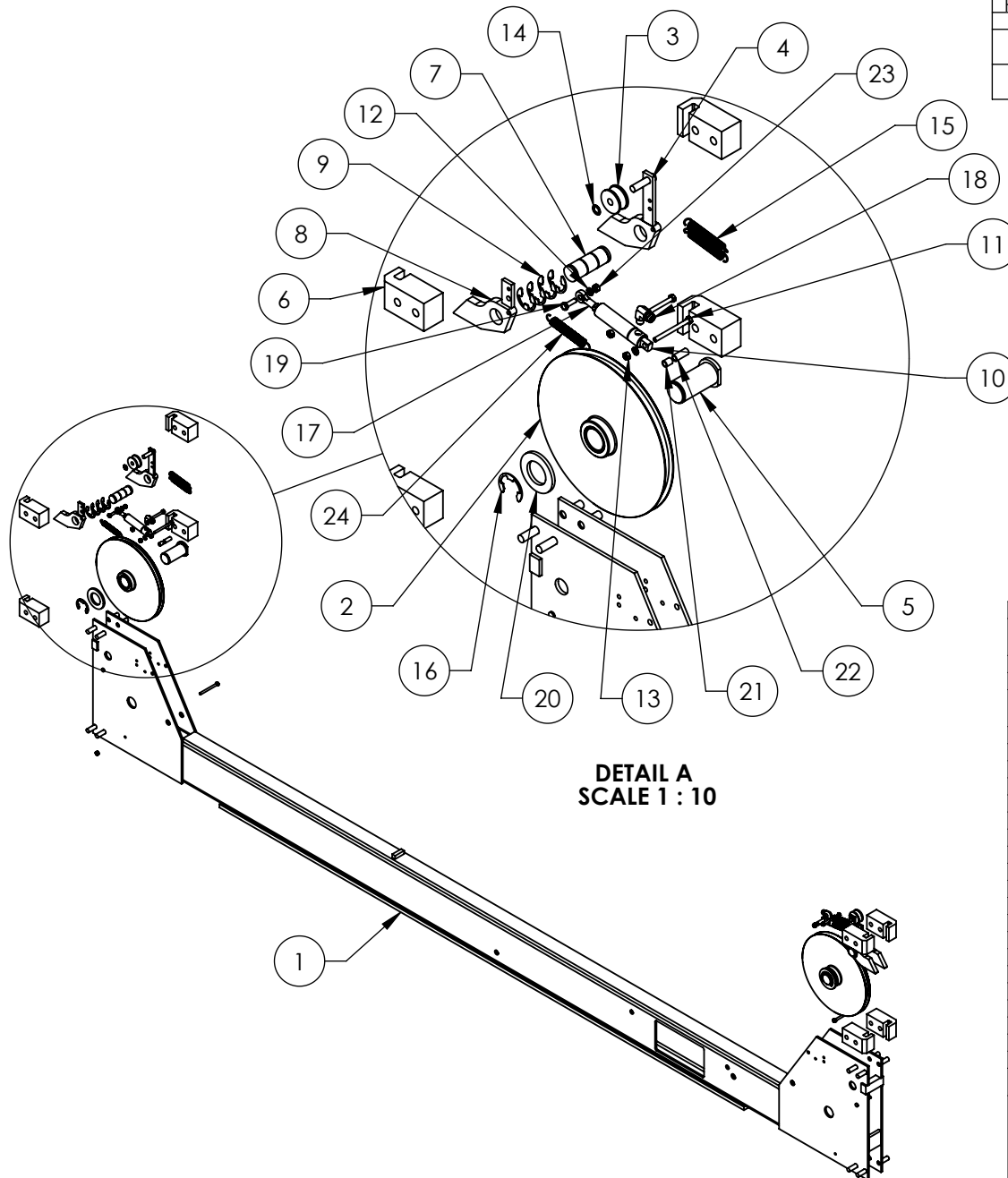
1. VERIFY CYLINDER PORTS ARE CAPPED OFF WITH STEEL 3/8" NPT PLUG.
2. SEE SHIPPING INSTRUCTIONS FOR FINAL PACKAGING.
3. ASSEMBLE ITEMS AS SHOWN.

NEXT ASSEMBLY
5245399



 BendPak. 1645 LEMONWOOD DR. SANTA PAULA, CA 93060 <small>HYDRAULIC AUTOMATIC SERVICE EQUIPMENT</small>		
TITLE: HDS-14X POWER SIDE RAMP ASSEMBLY		
SIZE	DWG. NO.	REV
A	5215241	M
SCALE: 1:10		SHEET 2 OF 2

REVISION				
REV	DESCRIPTION	DATE	EDITED BY	ECO#
E	REPLACED 5545026 WITH 5545005	3/23/2015	MR	00683
F	REMOVED 5550025 AND 5716629	09/30/2015	TM	00724
G	UPDATED BOM REVISIONS	01/22/2016	JM	00741



DETAIL A
SCALE 1 : 10

ITEM NO	PART NUMBER	DESCRIPTION	QTY	REV
1	5600276	HDS-14 CROSSTUBE WELDMENT, LARGE WINDOW	1	H
2	5215013	HDS-14 CROSSTUBE SHEAVE ASSEMBLY	2	B
3	5575380	HD/HDS/HDO/HDSO-14 SERIES SAFETY ROLLER	2	C
4	5600044	HD/HDS LIGHT DUTY SERIES SLACK SAFETY WELDMENT	2	F
5	5600173	HD/S/O-14 SHEAVE PIN WELDMENT	2	G
6	5716005	HD-7/7500/9/14/HDSO-14 PLASTIC SLIDE BLOCK	8	J
7	5746008	HD/HDS-7/7500/9/14, HDSO-14 SAFETY PIN	2	E
8	5600760	HD/HDS LIGHT DUTY SERIES SAFETY WELDMENT	2	B
9	5540275	E RING Ø25mm OD DIN 6799 0250	8	-
10	5502195	AIR CYLINDER, Ø19mm x 25 STROKE	2	-
11	5530005	HHB M6 x 1 x 70	6	-
12	5545005	M6 FLAT WASHER	4	-
13	5535112	NUT M6 x 1.0	4	-
14	5505030	ROTOR CLIP 10mm SS	2	-
15	5540065	SPRING Ø13mm x 90mm, SLACK SAFETY	4	A
16	5540002	E RING Ø1.375" OD TRUARC X5133-137	2	-
17	5505625	FEMALE ROD END M6 x 33mm	2	-
18	5550087	FTG ELB -04 COMP x -02 NPT	2	-
19	5530093	HHB M6 x 1 x 20	2	-
20	5545032	WASHER M36 x 66 FLAT	2	-
21	5755136	HD AIR CYLINDER SPACER 12mm	2	B
22	5755137	HD AIR CYLINDER SPACER 25mm	2	B
23	5535357	NUT M6 x 1.0 NL	4	-
24	5540070	SPRING Ø13mm x 89mm, AIR CYLINDER	2	B

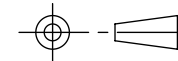
DO NOT SCALE DRAWING

NAME DATE

DRAWN TM 04/26/2013

CHECKED

THIRD ANGLE PROJECTION



PROPRIETARY AND CONFIDENTIAL
THE INFORMATION CONTAINED IN THIS DRAWING IS THE SOLE PROPERTY OF BENDPAK INC. ANY REPRODUCTION IN PART OR AS A WHOLE WITHOUT THE WRITTEN PERMISSION OF BENDPAK INC. IS PROHIBITED.

BendPak 1645 LEMONWOOD DR.
SANTA PAULA, CA 93060

TITLE: HDS-14 CROSSTUBE
ASSEMBLY, LARGE WINDOW

SIZE DWG. NO. REV

A 5215597 G

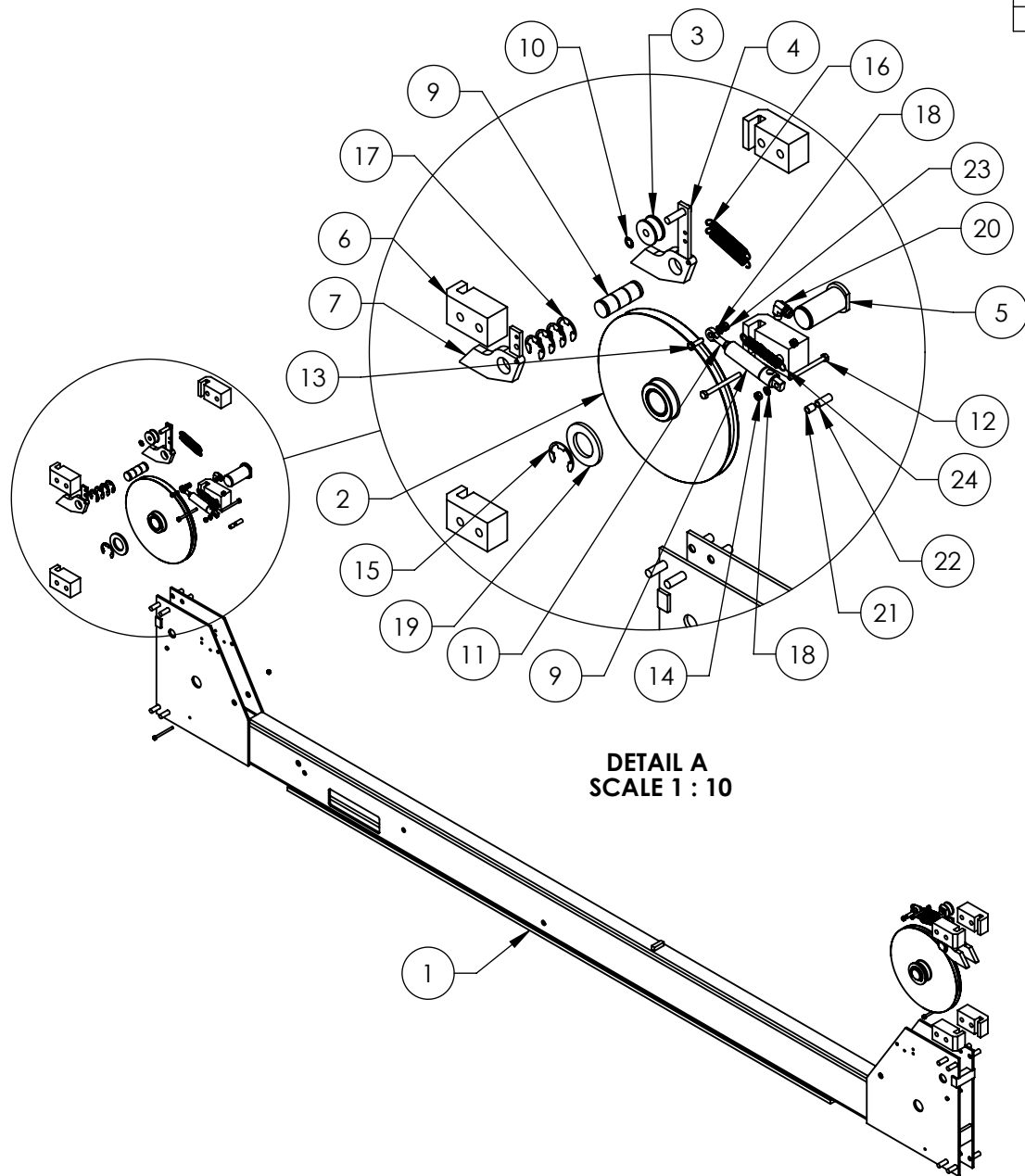
SCALE: 1:20 SHEET 1 OF 1

NOTE: UNLESS OTHERWISE SPECIFIED.

- GREASE PINS PRIOR TO ASSEMBLY
- ASSEMBLE ITEMS AS SHOWN

NEXT ASSEMBLY
5245399
5245400
5245401
5245402
5245403

		REVISION			
REV	DESCRIPTION	DATE	EDITED BY	ECO#	
C	REPLACED 5545026 WITH 5545005	3/23/2015	MR	00683	
D	REMOVED 5550025 AND 5716629	09/30/2015	TM	00724	
E	UPDATED BOM REVISIONS	12/28/2015	JM	00741	



DETAIL A
SCALE 1 : 10

ITEM NO	PART NUMBER	DESCRIPTION	QTY	REV
1	5600923	HDS-14 CROSSTUBE WELDMENT, SMALL WINDOW	1	B
2	5215013	HDS-14 CROSSTUBE SHEAVE ASSEMBLY	2	B
3	5575380	HD/HDS/HDO/HDSO-14 SERIES SAFETY ROLLER	2	C
4	5600044	HD/HDS LIGHT DUTY SERIES SLACK SAFETY WELDMENT	2	F
5	5600173	HD/S/O-14 SHEAVE PIN WELDMENT	2	G
6	5716005	HD-7/7500/9/14/HDSO-14 PLASTIC SLIDE BLOCK	8	J
7	5600760	HD/HDS LIGHT DUTY SERIES SAFETY WELDMENT	2	B
9	5746008	HD/HDS-7/7500/9/14 HDSO-14 SAFETY PIN	2	E
9	5502195	AIR CYLINDER, Ø19mm x 25 STROKE	2	-
10	5505030	ROTOR CLIP 10mm SS	2	-
11	5505625	FEMALE ROD END M6 x 33mm	2	-
12	5530005	HHB M6 x 1 x 70	6	-
13	5530093	HHB M6 x 1 x 20	2	-
14	5535112	NUT M6 x 1.0	2	-
15	5540002	E RING Ø1.375" OD TRUARC X5133-137	2	-
16	5540065	FEMALE ROD END 1/4-28	4	A
17	5540275	E RING Ø25mm OD DIN 6799 0250	8	-
18	5545005	M6 FLAT WASHER	4	-
19	5545032	WASHER M36 x 66 FLAT	2	-
20	5550087	FIG ELB -04 COMP x -02 NPT	2	-
21	5755136	HD AIR CYLINDER SPACER 12mm	2	B
22	5755137	HD AIR CYLINDER SPACER 25mm	2	B
23	5535357	NUT M6 x 1.0 NL	6	-
24	5540070	SPRING Ø13mm x 89mm, AIR CYLINDER	2	B

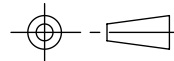
DO NOT SCALE DRAWING

NAME DATE

DRAWN TM 08/18/2014

CHECKED

THIRD ANGLE PROJECTION



PROPRIETARY AND CONFIDENTIAL
THE INFORMATION CONTAINED IN THIS DRAWING IS THE SOLE PROPERTY OF BENDPAK INC. ANY REPRODUCTION IN PART OR AS A WHOLE WITHOUT THE WRITTEN PERMISSION OF BENDPAK INC. IS PROHIBITED.

BendPak 1645 LEMONWOOD DR.
SANTA PAULA, CA 93060

TITLE: HDS-14 CROSSTUBE ASSEMBLY, SMALL WINDOW

SIZE DWG. NO.

A 5215663

REV

D

SCALE: 1:20

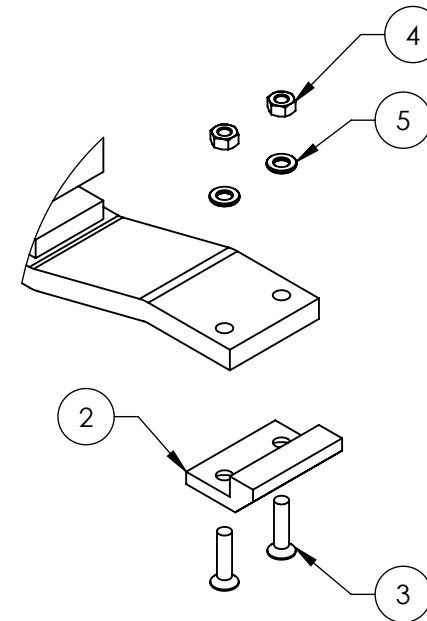
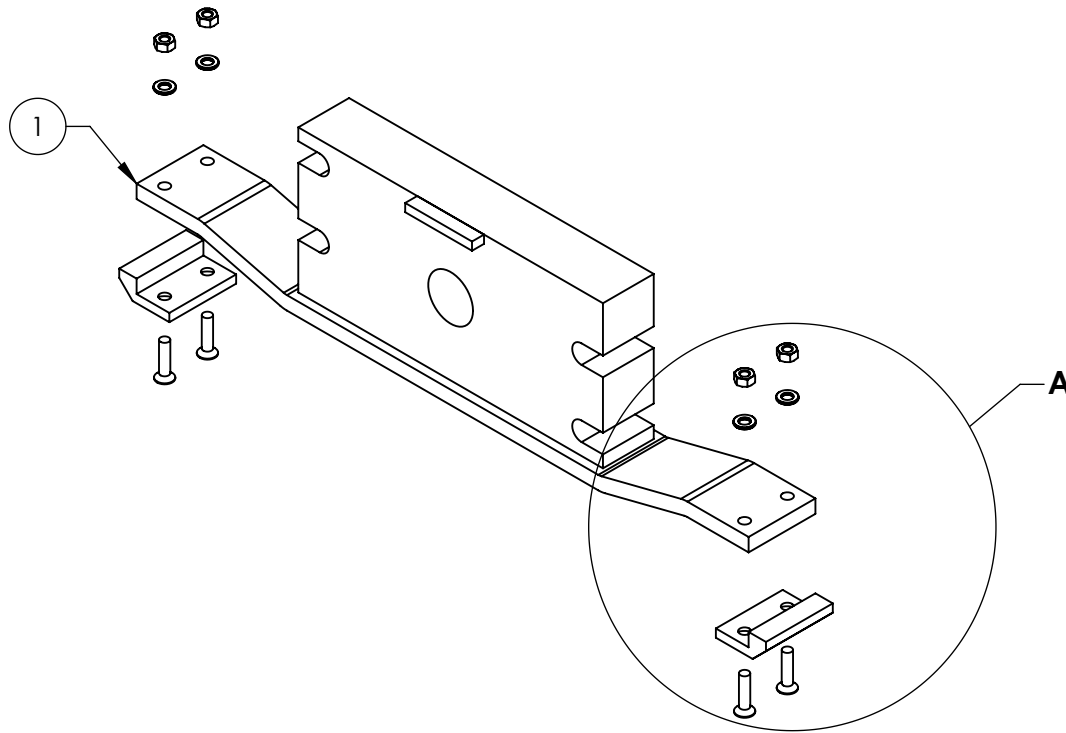
SHEET 1 OF 1

NOTE: UNLESS OTHERWISE SPECIFIED.

1. GREASE PINS PRIOR TO ASSEMBLY
2. ASSEMBLE ITEMS AS SHOWN



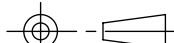
NEXT ASSEMBLY	
5245399	
5245400	
5245401	
5245402	
5245403	

REV	DESCRIPTION	REVISION	DATE	EDITED BY	ECO#
A	PRODUCTION RELEASE, DREIVED FROM 5215033		08/04/2014	TM	00664



DETAIL A
SCALE 1 : 3

ITEM NO	PART NUMBER	DESCRIPTION	QTY	REV
1	5600924	HDS/HDSO-14 CYLINDER FLANGE ARM WELDMENT	1	A
2	5716006	HD-14 CYL. FLANGE ARM SLIDE	2	D
3	5530077	FHPS M6 x 1 x 25L	4	-
4	5535112	NUT M6 x 1.0	4	-
5	5545005	M6 FLAT WASHER	4	-

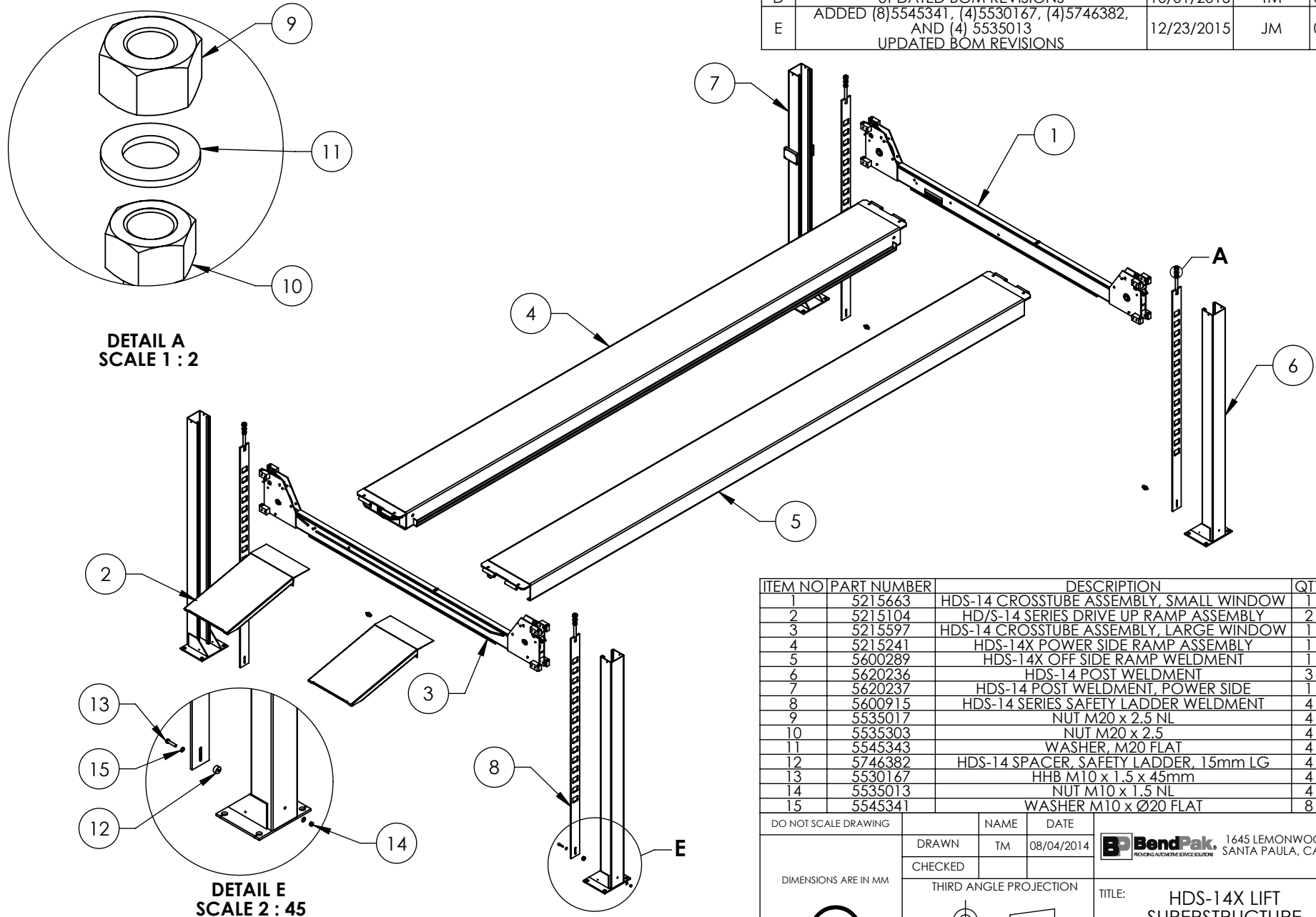
DO NOT SCALE DRAWING		NAME	DATE	<div><div></div><div>BendPak. <small>MOVING AUTOMATIC SERVICE SOLUTIONS</small></div></div> <div>1645 LEMONWOOD DR. SANTA PAULA, CA 93060</div>	
DRAWN		TM	08/04/2014		
CHECKED				<div>TITLE: HDS/HDSO-14 CYLINDER FLANGE ARM ASSEMBLY</div> <div><div>SIZE</div><div>DWG. NO.</div><div>REV</div><div>A</div><div>5215664</div><div>A</div></div> <div><div>SCALE: 1:4</div><div>SHEET 1 OF 1</div></div>	
THIRD ANGLE PROJECTION					
DIMENSIONS ARE IN MM					
Y		PROPRIETARY AND CONFIDENTIAL	THE INFORMATION CONTAINED IN THIS DRAWING IS THE SOLE PROPERTY OF BENDPAK INC. ANY REPRODUCTION IN PART OR AS A WHOLE WITHOUT THE WRITTEN PERMISSION OF BENDPAK INC. IS PROHIBITED.		

NOTE: UNLESS OTHERWISE SPECIFIED.

- SEE SHIPPING INSTRUCTIONS FOR FINAL PACKAGING
- ASSEMBLE ITEMS AS SHOWN

NEXT ASSEMBLY
5215072
5215097
5215239
5215241

REVISION		DATE	EDITED BY	ECO#
REV	DESCRIPTION			
C	UPDATED BOM REVISION	3/23/2015	MR	00683
D	UPDATED BOM REVISIONS	10/01/2015	TM	00724
E	ADDED (8) 5545341, (4) 5530167, (4) 5746382, AND (4) 5535013 UPDATED BOM REVISIONS	12/23/2015	JM	00741



ITEM NO	PART NUMBER	DESCRIPTION	QTY	REV
1	5215663	HDS-14 CROSSTUBE ASSEMBLY, SMALL WINDOW	1	D
2	5215104	HD/S-14 SERIES DRIVE UP RAMP ASSEMBLY	2	H
3	5215597	HDS-14 CROSSTUBE ASSEMBLY, LARGE WINDOW	1	G
4	5215241	HDS-14X POWER SIDE RAMP ASSEMBLY	1	M
5	5600289	HDS-14X OFF SIDE RAMP WELDMENT	1	D
6	5620236	HDS-14 POST WELDMENT	3	E
7	5620237	HDS-14 POST WELDMENT, POWER SIDE	1	E
8	5600915	HDS-14 SERIES SAFETY LADDER WELDMENT	4	B
9	5535017	NUT M20 x 2.5 NL	4	-
10	5535303	NUT M20 x 2.5	4	-
11	5545343	WASHER, M20 FLAT	4	-
12	5746382	HDS-14 SPACER, SAFETY LADDER, 15mm LG	4	A
13	5530167	HHB M10 x 1.5 x 45mm	4	-
14	5535013	NUT M10 x 1.5 NL	4	-
15	5545341	WASHER M10 x Ø20 FLAT	8	-

DO NOT SCALE DRAWING

DIMENSIONS ARE IN MM

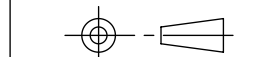


NAME DATE

DRAWN TM 08/04/2014

CHECKED

THIRD ANGLE PROJECTION



PROPRIETARY AND CONFIDENTIAL
THE INFORMATION CONTAINED IN THIS DRAWING IS
THE SOLE PROPERTY OF BENDPAK INC. ANY
REPRODUCTION IN PART OR AS A WHOLE WITHOUT
THE WRITTEN PERMISSION OF BENDPAK INC. IS
PROHIBITED.

BendPak 1645 LEMONWOOD DR.
SANTA PAULA, CA 93060

TITLE: HDS-14X LIFT
SUPERSTRUCTURE

SIZE DWG. NO. REV
A 5245399 E

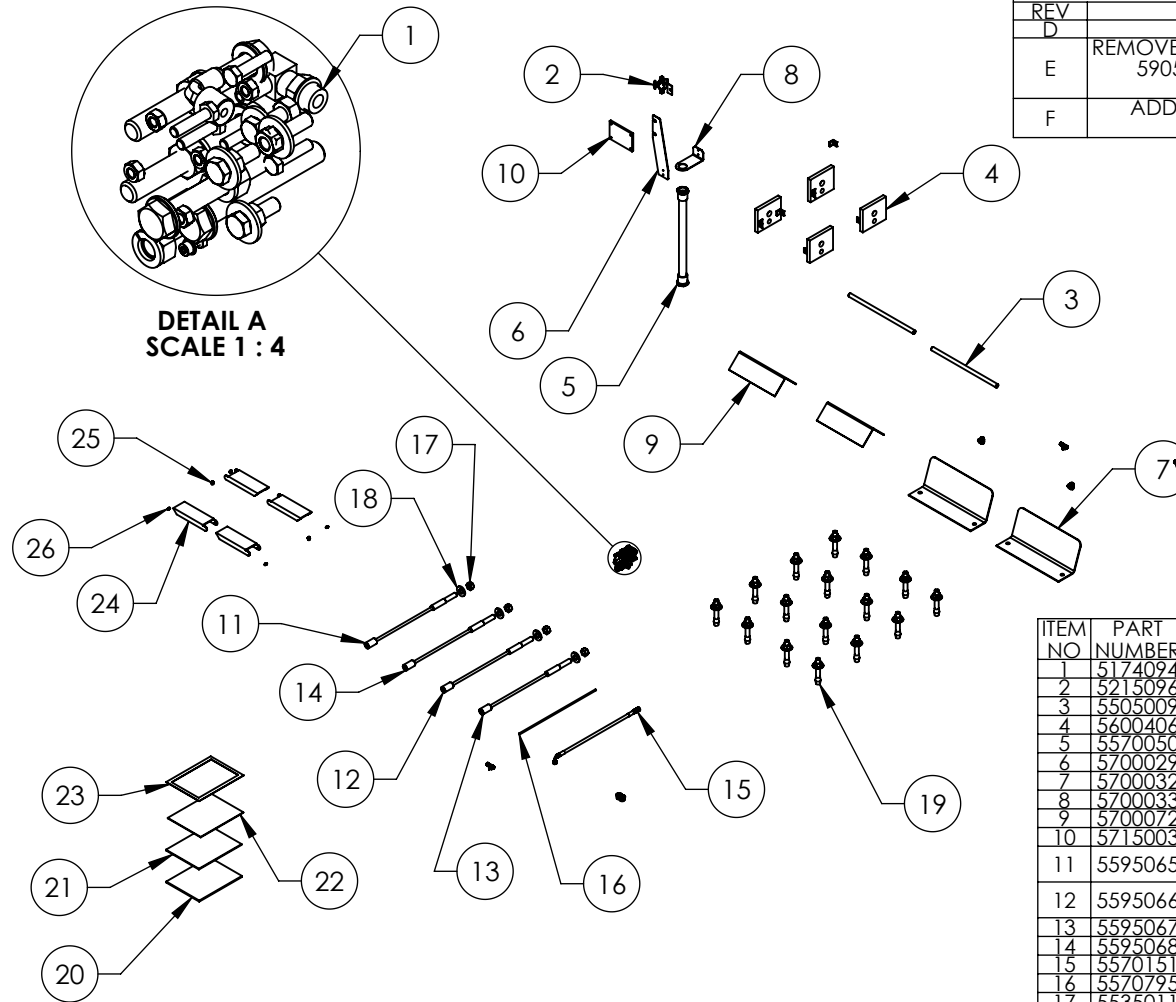
SCALE: 1:45 SHEET 1 OF 1

NOTE: UNLESS OTHERWISE SPECIFIED.

- SEE SHIPPING INSTRUCTIONS FOR FINAL PACKAGING
- ASSEMBLE ITEMS AS SHOWN

NEXT ASSEMBLY
5260521

REVISION				
REV	DESCRIPTION	DATE	EDITED BY	ECO#
D	UPDATED BOM REVISION	08/07/2015	MR	00675
E	REMOVED 5905103, 5905200, 5905465, 5905557, 5905940, AND 5930605, UPDATED BOM	8/13/2015	TM	00683
F	ADDED 5550025, 5550026 AND 5716629, REMOVED 5900151	10/01/2015	TM	00724



ITEM NO	PART NUMBER	DESCRIPTION	QTY.	REV
1	5174094	PARTS BAG HD/HDS-14 SERIES	1	E
2	5215096	PUSH BUTTON AIR ASSEMBLY	1	F
3	5505009	HD/HDS-14 DRIVE UP RAMP PIN	2	D
4	5600406	HD-14T/HDS-14 TOP PLATE WELDMENT	4	B
5	5570050	FLEX TUBE ASSEMBLY 1320mm	1	B
6	5700029	HD-SERIES FLEX TUBE BRACKET PLATE	1	F
7	5700032	TIRE STOP	2	B
8	5700033	HD-SERIES FLEX TUBE ANGLE	1	F
9	5700072	WHEEL CHOCK	2	A
10	5715003	POWER UNIT VIBRATION DAMPENER	1	B
11	5595065	HDS/HDSO-14/14LSX/14LSXE, HDS-14X CABLE ASSEMBLY Ø12 x 4100mm ST	1	C
12	5595066	HDS/HDSO-14/14LSX/14LSXE, HDS-14X CABLE ASSEMBLY Ø12 x 5732mm ST	1	C
13	5595067	HDS-14X/14LSXE CABLE ASSEMBLY Ø12 x 10101mm ST	1	C
14	5595068	HDS-14X/14LSXE CABLE ASSEMBLY Ø12 x 11726mm ST	1	C
15	5570151	HDS-14X HOSE ASSEMBLY Ø6.4 x 4325mm	1	B
16	5570795	1/4\" POLY-FLO TUBING	20000mm*	-
17	5535011	NUT M22 x 2.5 NL	4	-
18	5545345	WASHER M22 x 50mm FLAT	4	B
19	5530456	AB 3/4\" x 4 - 3/4"	16	-
20	5900161	HDS-14/14X INSTALLATION MANUAL	1	-
21	5900147	SAFETY MANUAL ALL / SM 93-1	1	-
22	5900152	ALIGN OIM OPERATION INSPECTION & MAINTENANCE	1	-
23	5905151	SAFETY TIPS CARD ALL-ST 90	1	-
24	5716629	HDS-14 CROSSTUBE COVER, PLASTIC	4	A
25	5550026	FIG GRS 1/8NPT	2	-
26	5550025	FIG GRS M6x1	4	-

NOTE: UNLESS OTHERWISE SPECIFIED.

- SEE SHIPPING INSTRUCTIONS FOR FINAL PACKAGING
- INSERT PARTS BAG INTO PARTS BOX FOR SHIPMENT
- THREAD NYLOCK NUTS ONTO CABLES PRIOR TO SHIPMENT
- HOSES AND CABLES IN REPRESENTATIONAL FORM
- (*) LENGTHS FOR REFERENCE ONLY

NEXT ASSEMBLY
5260521

DO NOT SCALE DRAWING

DIMENSIONS ARE IN MM

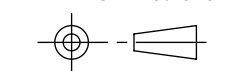


NAME DATE

DRAWN TM 05/06/2013

CHECKED

THIRD ANGLE PROJECTION



PROPRIETARY AND CONFIDENTIAL
THE INFORMATION CONTAINED IN THIS DRAWING IS THE SOLE PROPERTY OF BENDPAK INC. ANY REPRODUCTION IN PART OR AS A WHOLE WITHOUT THE WRITTEN PERMISSION OF BENDPAK INC. IS PROHIBITED.

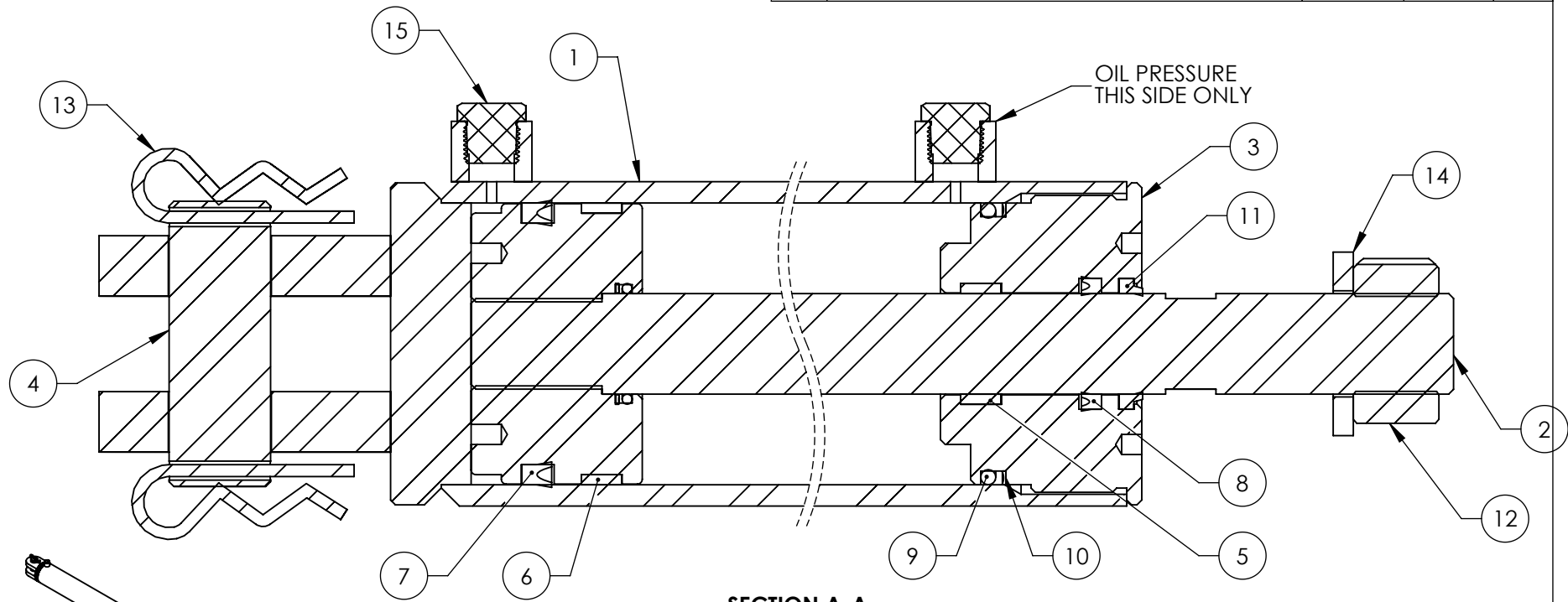
BendPak 1645 LEMONWOOD DR.
SANTA PAULA, CA 93060

TITLE:
PARTS BOX HDS-14X

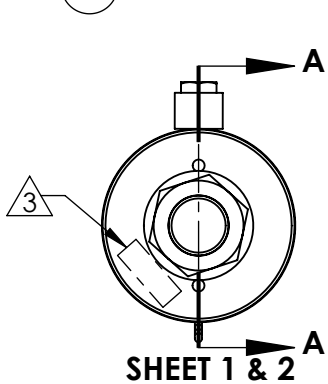
SIZE DWG. NO. REV
A 5250144 F

SCALE: 1:35 SHEET 1 OF 1

REVISION				
REV	DESCRIPTION	DATE	EDITED BY	ECO#
C	UPDATED BOM REVISION	07/31/2014	TM	00664
D	ADDED 5535009, 5545007 AND 5505350	01/14/2015	MR	00675
E	ADDED 5580112, REPLACED 5545007 WITH 5545151, REMOVED 5540280, UPDATED BOM REVISION	06/03/2015	TM	00683



ISOMETRIC VIEW
FOR REFERENCE ONLY
DO NOT SCALE



NOTE: UNLESS OTHERWISE SPECIFIED.

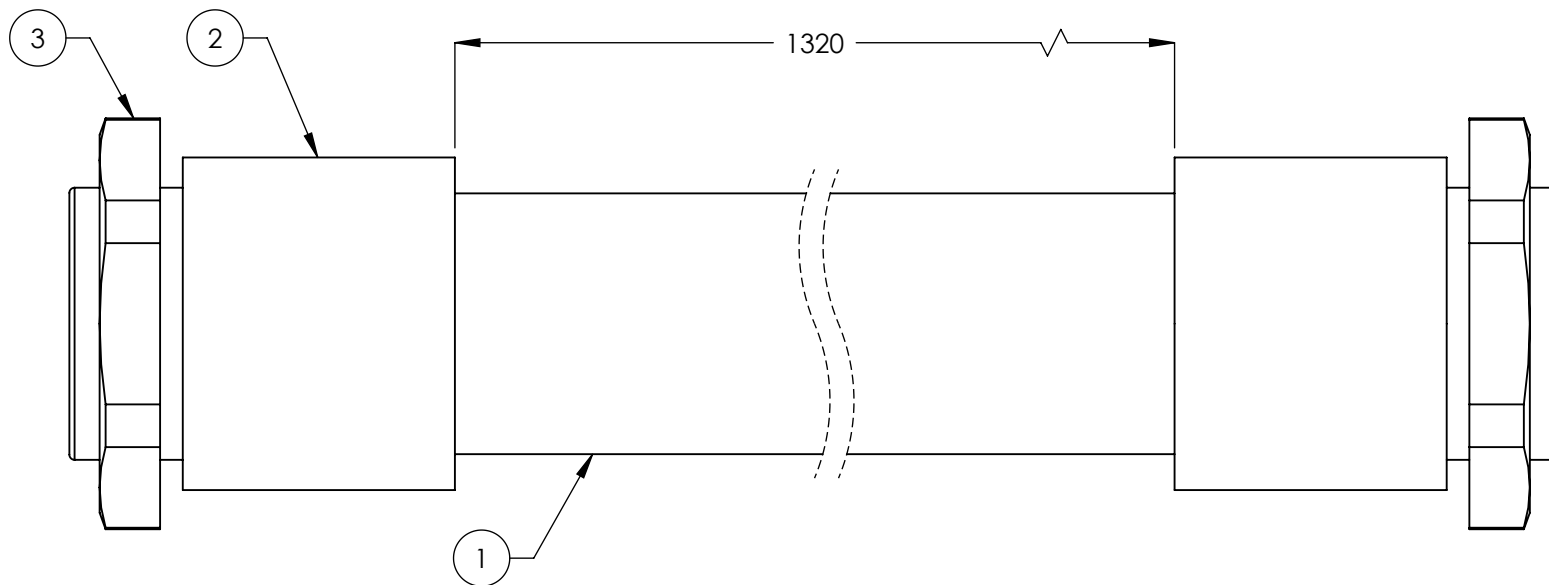
1. GREASE SEALS PRIOR TO ASSEMBLY
2. PRESSURE TEST CYLINDER ASSEMBLY 100% TO 3,600 PSI.(NO LEAKS)
3. MARK IN APPROXIMATE LOCATION WITH THE FOLLOWING INFORMATION: MANUFACTURER
MONTH/ YEAR
PART NUMBER
4. DISOGRIN 001-096 OR HERCULES DRU25-1.12-25 MAY BE USED IN PLACE OF RECO UN-1250-1625-0250
5. PARKER 4615-SHD-01250, HERCULES ST-125 OR AFM D-1250 MAY BE USED IN PLACE OF RECO D-1250
6. PARKER 4615-UP-2500-3000-375 OR HERCULES DPU25-3.00-37 MAY BE USED IN PLACE OF RECO UN-3000-3500-0375
7. HERCULES 612-350-050 MAY BE USED IN PLACE OF WR-03500-0500-125
8. HERCULES 612-150-050 MAY BE USED IN PLACE OF WR-01500-0500-125
9. VERIFY HYDRAULIC PORTS ARE CAPPED WITH PLUGS

SECTION A-A
SCALE 1 : 2


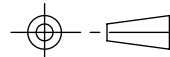
ITEM NO	PART NUMBER	DESCRIPTION	QTY	REV
1	700141	CYLINDER TUBE WELDMENT Ø3.5	1	C
2	700145	PISTON WELDMENT Ø3.5 x Ø1.25	1	F
3	700148	HEAD CAP Ø3.5	1	D
4	700149	CLEVIS PIN Ø32 x 90	1	C
5	WR-01500-0500-125	WEAR RING	1	--
6	WR 03500-0500-125	WEAR RING	1	--
7	RECO UN-3000-3500-0375	PISTON SEAL d76.20 D88.90 h9.53	1	--
8	RECO UN-1250-1625-0250	PISTON SEAL d31.75 D41.28 h6.35	1	--
9	-338 BUANA 70	O-RING 3/16 X 3 1/8 X 3 1/2	1	--
10	-338 BUANA 90	BACKUP RING	1	--
11	RECO D-1250	WIPER	1	--
12	5535009	NUT 1-1/4-12 NL	1	--
13	5505350	MODEL#211 HAIR PIN/ LARGE	2	--
14	5545151	WASHER Ø1 1/4 x 2.28 x .25" FLAT	1	--
15	5580112	3/8-18 NPT PLASTIC SCREW PLUG	2	--

DO NOT SCALE DRAWING		NAME	DATE	BendPak 1645 LEMONWOOD DR. SANTA PAULA, CA 93060
DRAWN		AC	05/07/2010	
CHECKED		CA	08/27/2015	
DIMENSIONS ARE IN INCHES		THIRD ANGLE PROJECTION		TITLE: CYLINDER ASSEMBLY Ø3.5 x 70
				SIZE DWG. NO.
		<small>PROPRIETARY AND CONFIDENTIAL THE INFORMATION CONTAINED IN THIS DRAWING IS THE SOLE PROPERTY OF BENDPAK INC. ANY REPRODUCTION IN PART OR AS A WHOLE WITHOUT THE WRITTEN PERMISSION OF BENDPAK INC. IS PROHIBITED.</small>		REV
		SCALE: 1:4		SHEET 1 OF 2

		REVISION			
REV.	DESCRIPTION	DATE	EDITED BY	ECO#	
A	PRODUCTION RELEASE	12/24/2007	AC	00104	
A-001	CHANGED SURFACE FINISH FROM 3.2 μm TO 1.6 $\text{Ra } \mu\text{m}$	09/05/2008	GJ	00237	
A-002	UPDATED NEXT ASSEMBLY	10/02/2008	AC	00140	
B	UPDATE TUBE TO NEW STYLE, UPDATED NEXT ASSEMBLY AND TITLE	12/11/2008	AC	00256	
B-001	UPDATED NEXT ASSEMBLY	05/04/2009	AC	00277	
B-013	UPDATED NEXT ASSEMBLIES	05/17/2013	TM	00593	



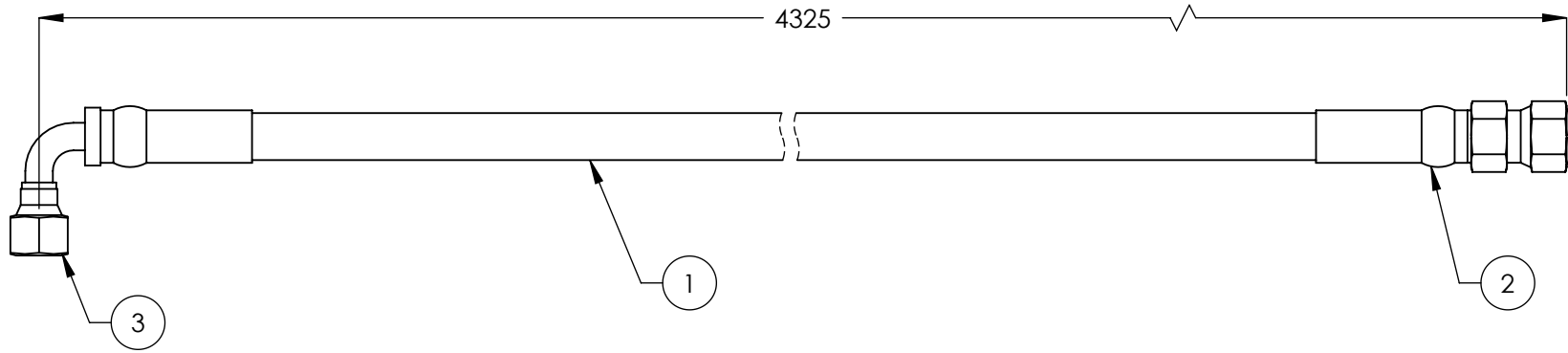
ITEM NO	PART NUMBER	DESCRIPTION	QTY.	REV
1	5570053	PE FLEX TUBE $\varnothing 34.5 \times \varnothing 29$	1386mm*	-
2	5555555	WQG1-M36/AD34.5 CONNECTOR	2	-
3	5535050	PLASTIC NUT M36 x 2	2	-

DO NOT SCALE DRAWING		NAME		DATE		 BendPak. 1645 LEMONWOOD DR. SANTA PAULA, CA 93060	
DIMENSIONS ARE IN MM		DRAWN		AC			
TOLERANCES:		CHECKED				THIRD ANGLE PROJECTION 	
0. = ±1.5							
0.0 = ±1.0							
0.00 = ±0.25							
0.000 = ±0.13							
ANGULAR: MACH±2°						TITLE: FLEX TUBE ASSEMBLY 1320mm	
SURFACE FINISH 1.6 ISO Ra μm FOR MACHINED SURFACES UNLESS OTHERWISE SPECIFIED							
MATERIAL:						SIZE DWG. NO. A 5570050 REV B	
SIZE:							
NEXT ASSEMBLY						SCALE: 1:1 SHEET 1 OF 1	
HD/HDS/HDSO							
SERIES							

NOTE: UNLESS OTHERWISE SPECIFIED.

- FOR ITEM 1 SPECIFICATIONS REFER TO PART SPECIFICATION FORM
- (*)ITEM 1 QTY FOR REFERENCE ONLY

REVISION				
REV	DESCRIPTION	DATE	EDITED BY	ECO#
A	PRODUCTION RELEASE	03/11/2009	GJZ	00249
A-001	UPDATED NEXT ASSEMBLY	05/17/2013	TM	00593
B	REPLACED 5570110 WITH 5570129	3/23/2015	MR	00683




NOTE: UNLESS OTHERWISE SPECIFIED.

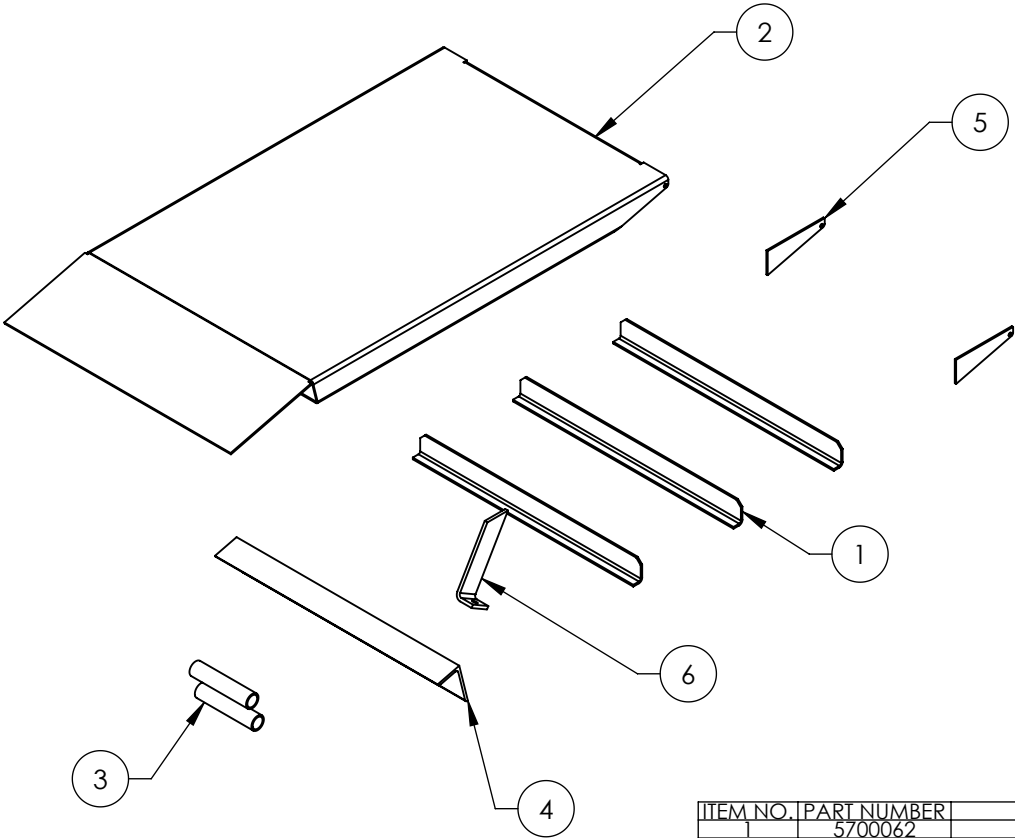
- FOR ITEM 1 SPECIFICATIONS REFER TO PART SPECIFICATION FORM
- ITEM 1 QTY FOR REFERENCE ONLY

NEXT ASSEMBLY
5250144

ITEM NO.	PART NUMBER	DESCRIPTION	QTY.	REV
1	5570129	Ø6.4 ID HYDRAULIC HOSE	4247mm*	-
2	5550325	FTG NPL Ø1/4 CRIMP x -04 JIC		-
3	5550345	FTG ELB Ø1/4 CRIMP x -04 JIC		-


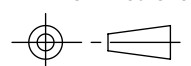
DO NOT SCALE DRAWING		NAME	DATE	 BendPak. 1645 LEMONWOOD DR. SANTA PAULA, CA 93060 <small>PROVIDING AUTOMOTIVE SERVICE SOLUTIONS</small>		
<div>DIMENSIONS ARE IN MM TOLERANCES: 0. = ±1.5 0.0 = ±0.5 ANGULAR: 0. = ±2° SURFACE FINISH 1.6 ISO Ra µm FOR MACHINED SURFACES UNLESS OTHERWISE SPECIFIED</div>		DRAWN	GJZ			03/11/2009
		CHECKED	CA			08/27/2015
THIRD ANGLE PROJECTION				TITLE: HDS-14X HOSE ASSEMBLY Ø6.4 x 4325mm		
<div>PROPRIETARY AND CONFIDENTIAL THE INFORMATION CONTAINED IN THIS DRAWING IS THE SOLE PROPERTY OF BENDPAK INC. ANY REPRODUCTION IN PART OR AS A WHOLE WITHOUT THE WRITTEN PERMISSION OF BENDPAK INC. IS PROHIBITED.</div>				SIZE	DWG. NO.	REV
				A	5570151	B
				SCALE: 1:2		SHEET 1 OF 1

REVISION				
REV	DESCRIPTION	DATE	EDITED BY	ECO#
D	UPDATED DRAWING, REMOVED 5755028, ADDED ONE 5755027, CHANGED ROLLER CLEVIS PLATE DISTANCE 38 WAS 57 (2ND PAGE)	06/16/2008	TM	00206
D-001	CHANGED SURFACE FINISH FROM 3.2 μm TO 1.6 $\text{Ra } \mu\text{m}$	09/09/2008	GJ	00237
E	ADDED HD/S-14 SERIES TO TITLE	10/05/2009	AC	00300
F	UPDATED BOM REVISION	07/30/2010	TM	00387
F-001	CHANGED PAINT COLOR FROM BLUE TO YELLOW AND ADDED PAINT SPEC NUMBER	12/08/2010	TM	00427



- NOTE: UNLESS OTHERWISE SPECIFIED.**
1. BREAK AND DEBURR ALL SHARP EDGES 0.3mm
 2. REMOVE ALL WELD SPLATTER
 3. GRIND/SAND EXTERIOR CORNERS/WELDS SMOOTH
 4. PAINT BENDPAK YELLOW 583-2T
 5. APPLY #30 GRIT ALUMINUM OXIDE WHEN PAINTING TO TOP ONLY AFTER WELDING

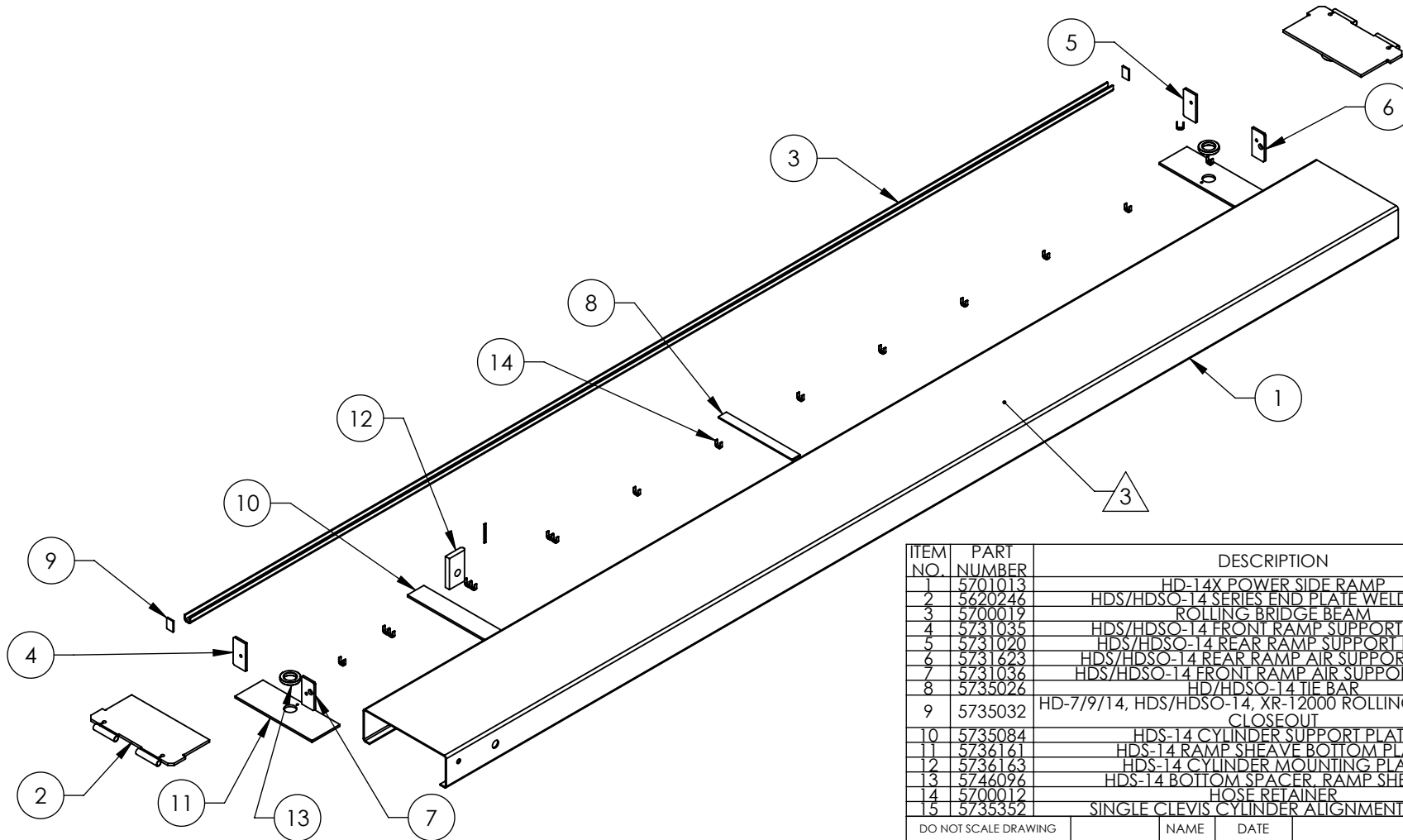
ITEM NO.	PART NUMBER	DESCRIPTION		QTY.	REV
1	5700062	RAMP SUPPORT		3	C
2	5701034	DRIVE UP RAMP SHELL		1	D
3	5755027	RAMP HINGE		2	C
4	5700063	SUPPORT ANGLE		1	D
5	5736083	ROLLER CLEVIS PLATE		2	E
6	5730012	RAMP STOP		1	C

DO NOT SCALE DRAWING		NAME	DATE	 1645 LEMONWOOD DR. SANTA PAULA, CA 93060	
DIMENSIONS ARE IN MM		DRAWN	JR		
TOLERANCES: 0. = ±1.5 0.0 = ±0.5		CHECKED	AC		
ANGULAR: 0. = ±2°		THIRD ANGLE PROJECTION		TITLE: HD/S-14 SERIES DRIVE UP RAMP WELDMENT	
SURFACE FINISH 1.6 ISO Ra μm FOR MACHINED SURFACES UNLESS OTHERWISE SPECIFIED					
MATERIAL: —		PROPRIETARY AND CONFIDENTIAL THE INFORMATION CONTAINED IN THIS DRAWING IS THE SOLE PROPERTY OF BENDPAK INC. ANY REPRODUCTION IN PART OR AS A WHOLE WITHOUT THE WRITTEN PERMISSION OF BENDPAK INC. IS PROHIBITED.		SIZE	REV
SIZE: —				DWG. NO.	
—					

A	5600138	F
SCALE: 1:12		SHEET 1 OF 2

NEXT ASSEMBLY
5600138

REV	DESCRIPTION	REVISION	DATE	EDITED BY	ECO#
C	UPDATED BOM REVISION		08/10/2010	TM	00388
D	MOVED 5735032 UP 12mm, UPDATED BOM REVISION		10/18/2010	TM	00414
D-001	ROLLING BRIDGE BEAM WELD WAS 6 x 100-300 NOW 5 x 60-350		11/22/2010	TM	00427
E	UPDATED BOM REVISION, ADDED 5735352		12/29/2010	TM	00431
E-001	ADDED 6mm WELD TO BOTTOM OF 5736163		08/11/2011	TM	00479



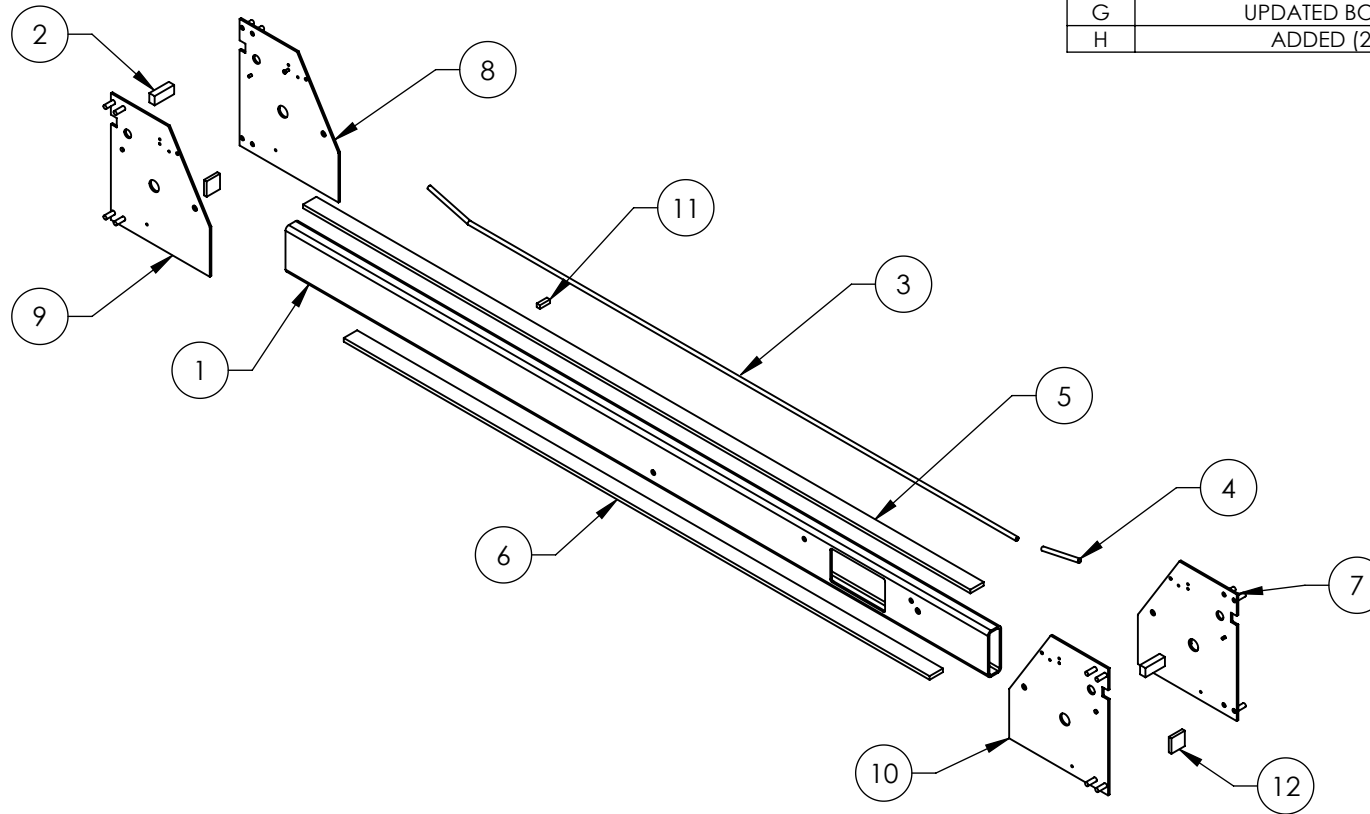
NOTE: UNLESS OTHERWISE SPECIFIED.

1. BREAK AND DEBURR ALL SHARP EDGES 0.3mm
2. REMOVE ALL WELD SPLATTER
3. APPLY #30 GRIT ALUMINUM OXIDE TO TOP SURFACE AFTER WELDING & BEFORE PAINTING
4. PAINT BENDPAK BLUE

ITEM NO.	PART NUMBER	DESCRIPTION	QTY.	REV
1	5701013	HD-14X POWER SIDE RAMP	1	E
2	5620246	HDS/HDSO-14 SERIES END PLATE WELDMENT	2	B
3	5700019	ROLLING BRIDGE BEAM	1	B
4	5731035	HDS/HDSO-14 FRONT RAMP SUPPORT PLATE	1	A
5	5731020	HDS/HDSO-14 REAR RAMP SUPPORT PLATE	1	A
6	5731623	HDS/HDSO-14 REAR RAMP AIR SUPPORT PLATE	1	A
7	5731036	HDS/HDSO-14 FRONT RAMP AIR SUPPORT PLATE	1	A
8	5735026	HD/HDSO-14 TIE BAR	1	E
9	5735032	HD-7/9/14, HDS/HDSO-14, XR-12000 ROLLING JACK RAIL CLOSEOUT	2	A
10	5735084	HDS-14 CYLINDER SUPPORT PLATE	1	A
11	5736161	HDS-14 RAMP SHEAVE BOTTOM PLATE	2	B
12	5736163	HDS-14 CYLINDER MOUNTING PLATE	1	A
13	5746096	HDS-14 BOTTOM SPACER, RAMP SHEAVE	2	A
14	5700012	HOSE RETAINER	16	B
15	5735352	SINGLE CLEVIS CYLINDER ALIGNMENT PLATE	1	A

DO NOT SCALE DRAWING	NAME	DATE	1645 LEMONWOOD DR. SANTA PAULA, CA 93060	
DIMENSIONS ARE IN MM TOLERANCES: 0. = ±1.5 0.0 = ±0.5 ANGULAR: 0. = ±2° SURFACE FINISH 1.6 ISO Ra µm FOR MACHINED SURFACES UNLESS OTHERWISE SPECIFIED MATERIAL: - SIZE: -	DRAWN GJZ	11/26/2008		
THIRD ANGLE PROJECTION			TITLE: HDS-14X POWER SIDE RAMP WELDMENT	
			SCALE: 1:27	
<small>PROPRIETARY AND CONFIDENTIAL THE INFORMATION CONTAINED IN THIS DRAWING IS THE SOLE PROPERTY OF BENDPAK INC. ANY REPRODUCTION IN PART OR AS A WHOLE WITHOUT THE WRITTEN PERMISSION OF BENDPAK INC. IS PROHIBITED.</small>			SIZE DWG. NO. A 5600268	REV E
NEXT ASSEMBLY 5215241			SHEET 1 OF 3	

REVISION		DATE	EDITED BY	ECO#
REV	DESCRIPTION			
F	UPDATED BOM REVISIONS AND NEXT ASSEMBLY	04/25/2013	TM	00593
G	UPDATED BOM REVISION	03/31/2014	TM	00648
H	ADDED (2) 5735073	01/22/2016	JM	00741



ITEM NO	PART NUMBER	DESCRIPTION	QTY	REV
1	5766077	HDS-14 CROSSTUBE, LARGE WINDOW	1	B
2	5735027	CROSSTUBE SAFETY BLOCK	2	C
3	5755010	AIR SAFETY TROUGH	1	C
4	5755011	SMALL AIR SAFETY TROUGH	1	C
5	5735023	HD-14 SERIES TOP CROSS TUBE STRAP	1	E
6	5735039	HD/HDSO-14 BOTTOM CROSS TUBE STRAP	1	E
7	5620228	HDS-14 CROSSTUBE END PLATE #1 WELDMENT	1	G
8	5620229	HDS-14 CROSSTUBE END PLATE #2 WELDMENT	1	G
9	5620230	HDS-14 CROSSTUBE END PLATE #3 WELDMENT	1	F
10	5620231	HDS-14 CROSSTUBE END PLATE #4 WELDMENT	1	F
11	5760003	HD-12/14 RAMP STOP	1	D
12	5735073	HDO/HDSO-14 CARRIAGE TIE BLOCK	2	B

DO NOT SCALE DRAWING		NAME	DATE
DIMENSIONS ARE IN MM TOLERANCES: 0. = ±1.5 0.0 = ±0.5 ANGULAR: 0. = ±2° SURFACE FINISH 1.6 ISO Ra μm FOR MACHINED SURFACES UNLESS OTHERWISE SPECIFIED		DRAWN	GJZ 11/12/2008
		CHECKED	
THIRD ANGLE PROJECTION 		TITLE: HDS-14 CROSSTUBE WELDMENT, LARGE WINDOW	
		SIZE DWG. NO. REV A 5600276 H	
NEXT ASSEMBLY 5215597		SCALE: 1:20 SHEET 1 OF 2	

NOTE: UNLESS OTHERWISE SPECIFIED.

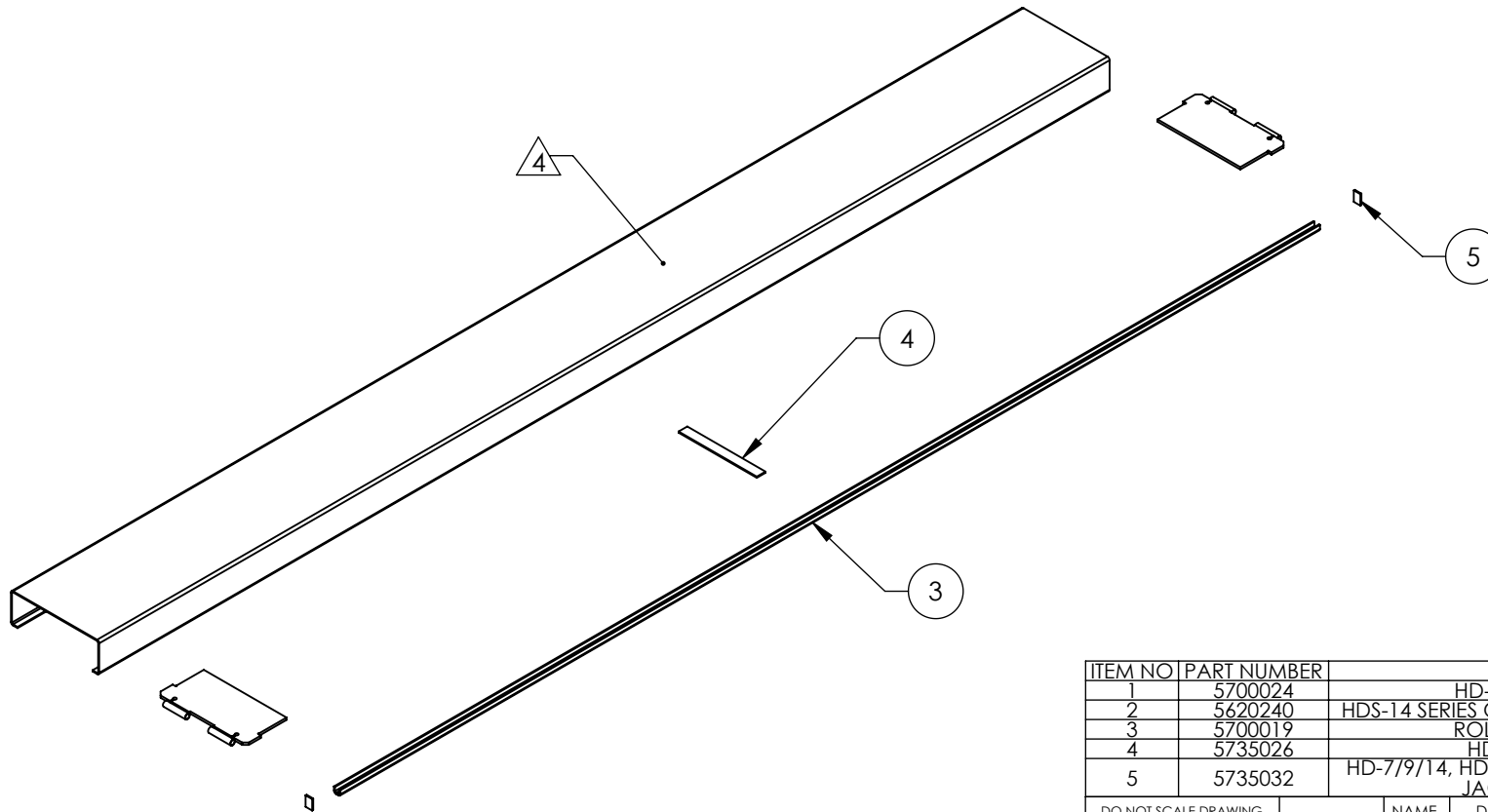
- BREAK AND DEBURR ALL SHARP EDGES 0.3mm
- REMOVE ALL WELD SPLATTER
- PAINT BENDPAK BLUE

NEXT ASSEMBLY
5215597

PROPRIETARY AND CONFIDENTIAL
THE INFORMATION CONTAINED IN THIS DRAWING IS
THE SOLE PROPERTY OF BENDPAK INC. ANY
REPRODUCTION IN PART OR AS A WHOLE WITHOUT
THE WRITTEN PERMISSION OF BENDPAK INC. IS
PROHIBITED.

BendPak 1645 LEMONWOOD DR.
SANTA PAULA, CA 93060

REVISION		DATE	EDITED BY	ECO#
REV	DESCRIPTION			
B	MOVED 5735032 UP 12mm, UPDATED BOM REVISION	10/18/2010	TM	00414
B-001	ROLLING BRIDGE BEAM WELD WAS 6 x 100-300 NOW 5 x 60-350	11/22/2010	TM	00427
C	UPDATED BOM REVISION	12/29/2010	AC	00431
C-001	UPDATED NEXT ASSEMBLY	05/17/2011	TM	00456
C-002	UPDATED NEXT ASSEMBLIES	05/17/2013	TM	00593
C-003	UPDATED NEXT ASSEMBLIES	08/13/2014	TM	00664
D	REMOVED 5735026 FROM THE UNDERSIDE, REMAINING 5735026 CENTER	1/28/2015	MR	00675

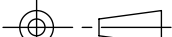


NOTE: UNLESS OTHERWISE SPECIFIED.

1. BREAK AND DEBURR ALL SHARP EDGES 0.3mm
2. REMOVE ALL WELD SPLATTER
3. PAINT AFTER WELDING UNLESS USED ON ALIGNMENT RAMP

4. APPLY #30 GRIT ALUMINUM OXIDE WHEN PAINTING

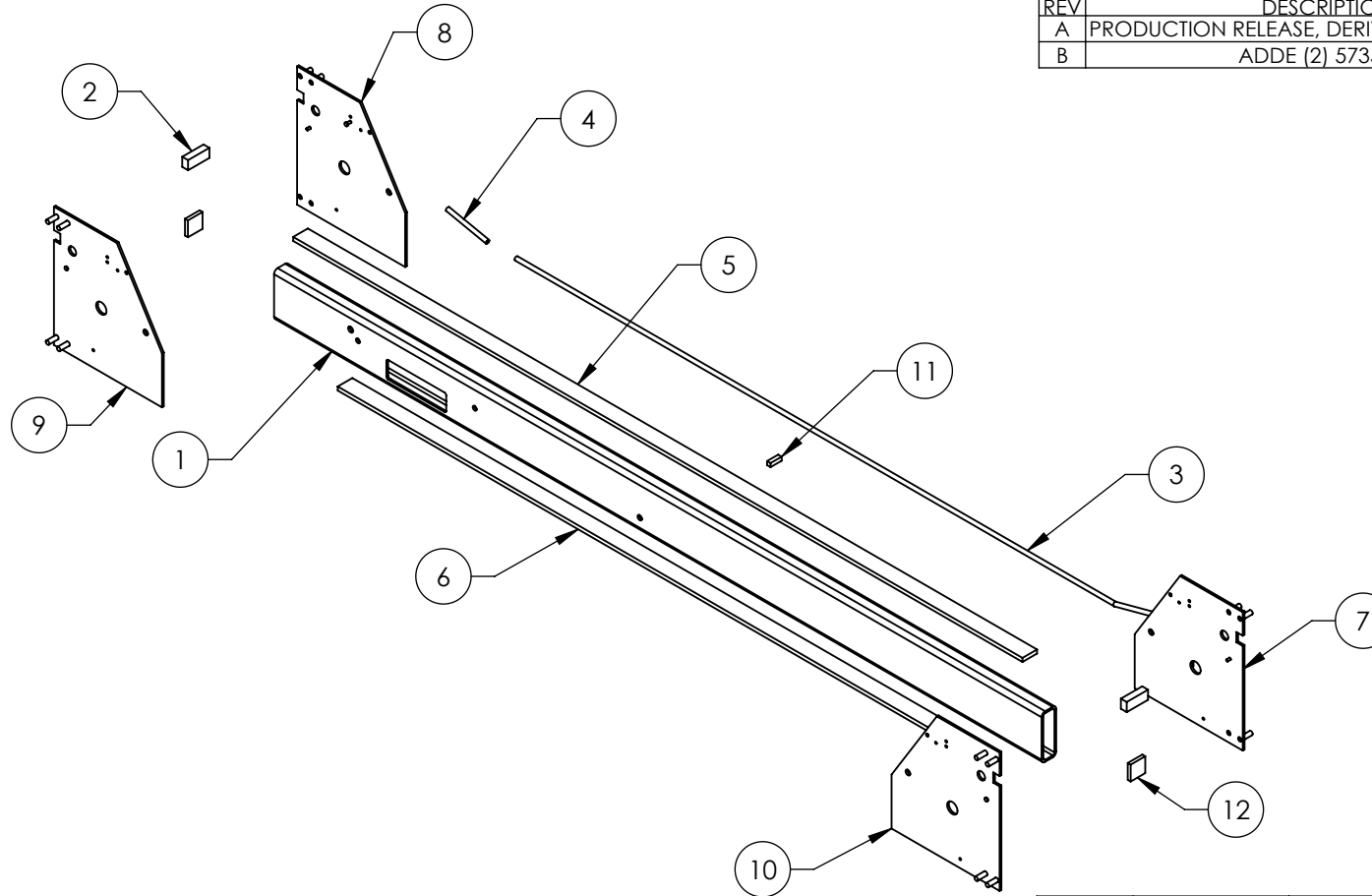
ITEM NO	PART NUMBER	DESCRIPTION	QTY	REV
1	5700024	HD-14X OFF SIDE RAMP	1	E
2	5620240	HDS-14 SERIES OFF SIDE END PLATE WELDMENT	2	B
3	5700019	ROLLING BRIDGE BEAM	1	B
4	5735026	HD/HDSO-14 TIE BAR	1	E
5	5735032	HD-7/9/14, HDS/HDSO-14, XR-T2000 ROLLING JACK RAIL CLOSEOUT	2	C

DO NOT SCALE DRAWING		NAME	DATE	1645 LEMONWOOD DR. SANTA PAULA, CA 93060	
DIMENSIONS ARE IN MM TOLERANCES: 0. = ±1.5 0.0 = ±0.5 ANGULAR: 0. = ±2° SURFACE FINISH 1.6 ISO Ra µm FOR MACHINED SURFACES UNLESS OTHERWISE SPECIFIED		DRAWN	AC	07/01/2009	TITLE: HDS-14X OFF SIDE RAMP WELDMENT
		CHECKED	VB	02/19/2015	
		THIRD ANGLE PROJECTION			
PROPRIETARY AND CONFIDENTIAL THE INFORMATION CONTAINED IN THIS DRAWING IS THE SOLE PROPERTY OF BENDPAK INC. , ANY REPRODUCTION IN PART OR AS A WHOLE WITHOUT THE WRITTEN PERMISSION OF BENDPAK INC. IS PROHIBITED.					
Y		SIZE	DWG. NO.		REV
		A	5600289		D
		SCALE: 1:30			SHEET 1 OF 2

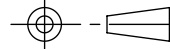
NEXT ASSEMBLY
5245399
5245403

PROPRIETARY AND CONFIDENTIAL
THE INFORMATION CONTAINED IN THIS DRAWING IS
THE SOLE PROPERTY OF BENDPAK INC. ANY
REPRODUCTION IN PART OR AS A WHOLE WITHOUT
THE WRITTEN PERMISSION OF BENDPAK INC. IS
PROHIBITED.

REVISION		DATE	EDITED BY	ECO#
REV	DESCRIPTION			
A	PRODUCTION RELEASE, DERIVED FROM 5600277	08/18/2014	TM	00664
B	ADDE (2) 5735073	01/22/2016	JM	00741



ITEM NO	PART NUMBER	DESCRIPTION	QTY	REV
1	5766036	HDS-14 CROSSTUBE, SMALL WINDOW	1	C
2	5735027	CROSSTUBE SAFETY BLOCK	2	C
3	5755010	AIR SAFETY TROUGH	1	C
4	5755011	SMALL AIR SAFETY TROUGH	1	C
5	5735023	HD-14 SERIES TOP CROSS TUBE STRAP	1	E
6	5735039	HD/HDSO-14 BOTTOM CROSS TUBE STRAP	1	E
7	5620228	HDS-14 CROSSTUBE END PLATE #1 WELDMENT	1	G
8	5620229	HDS-14 CROSSTUBE END PLATE #2 WELDMENT	1	G
9	5620230	HDS-14 CROSSTUBE END PLATE #3 WELDMENT	1	F
10	5620231	HDS-14 CROSSTUBE END PLATE #4 WELDMENT	1	F
11	5760003	HD-12/14 RAMP STOP	1	D
12	5735073	HDO/HDSO-14 CARRIAGE TIE BLOCK	2	B

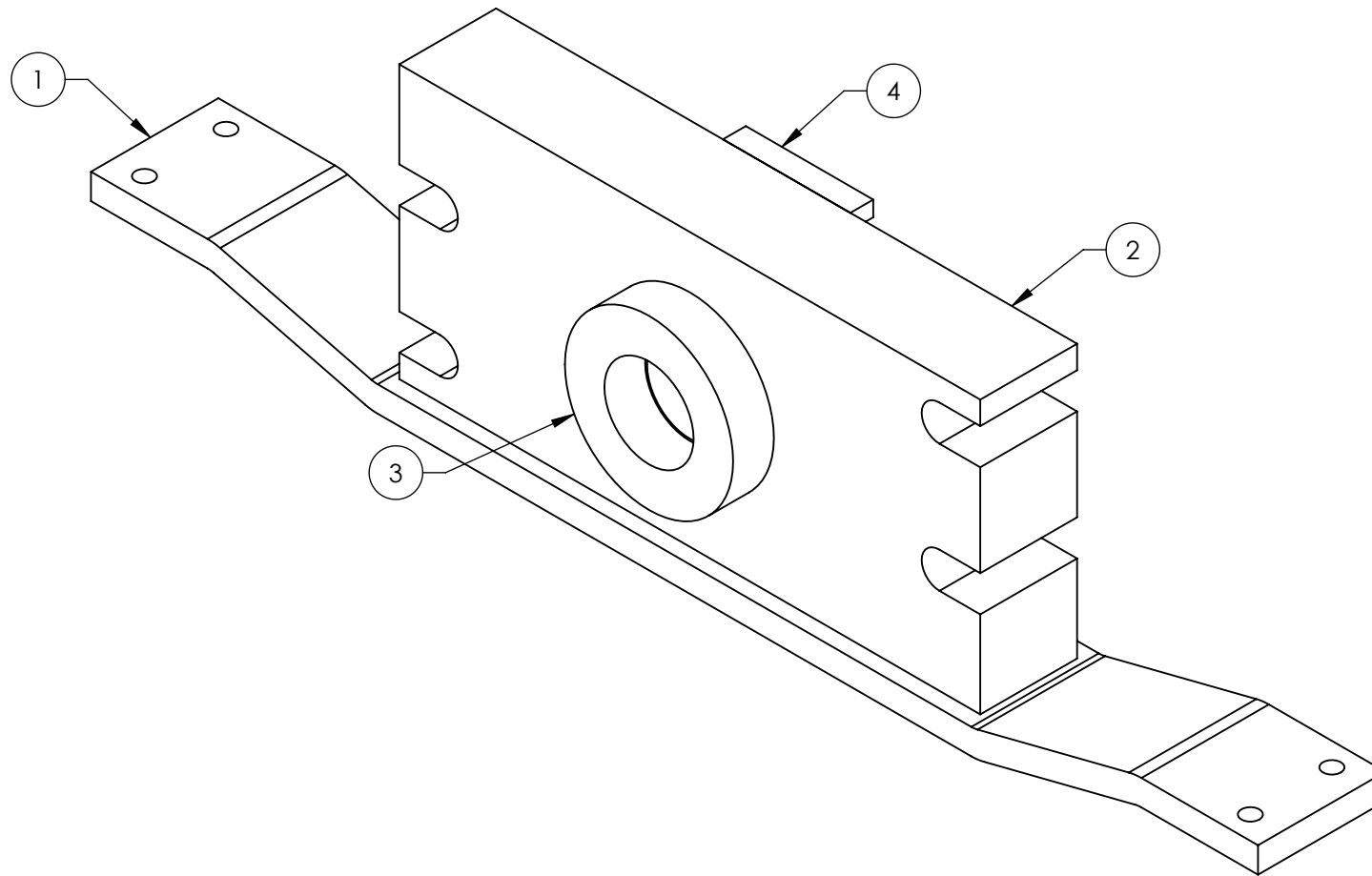
DO NOT SCALE DRAWING		NAME		DATE		1645 LEMONWOOD DR. SANTA PAULA, CA 93060			
DIMENSIONS ARE IN MM TOLERANCES: 0. = ±1.5 0.0 = ±0.5		DRAWN		TM				08/18/2014	
		CHECKED							
ANGULAR: 0. = ±2°		THIRD ANGLE PROJECTION				TITLE:			
						HDS-14 CROSSTUBE WELDMENT, SMALL WINDOW			
SURFACE FINISH 1.6 ISO Ra µm FOR MACHINED SURFACES UNLESS OTHERWISE SPECIFIED		<p>PROPRIETARY AND CONFIDENTIAL</p> <p>THE INFORMATION CONTAINED IN THIS DRAWING IS THE SOLE PROPERTY OF BENDPAK INC. ANY REPRODUCTION IN PART OR AS A WHOLE WITHOUT THE WRITTEN PERMISSION OF BENDPAK INC. IS PROHIBITED.</p>				SIZE	DWG. NO.	REV	
						A	5600923	B	
						SCALE: 1:18		SHEET 1 OF 2	

NOTE: UNLESS OTHERWISE SPECIFIED.

- BREAK AND DEBURR ALL SHARP EDGES 0.3mm
- REMOVE ALL WELD SPLATTER
- PAINT BENDPAK BLUE

NEXT ASSEMBLY
5215663


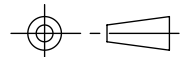
REV	DESCRIPTION	REVISION	DATE	EDITED BY	ECO#
A	PRODUCTION RELEASE, DERIVED FROM 5600079		08/04/2014	TM	00664

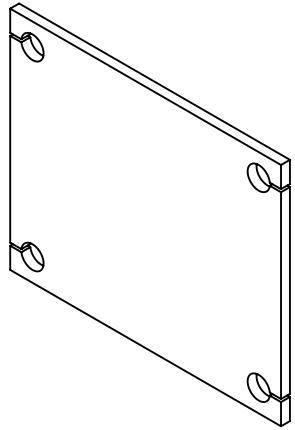


NOTE: UNLESS OTHERWISE SPECIFIED.

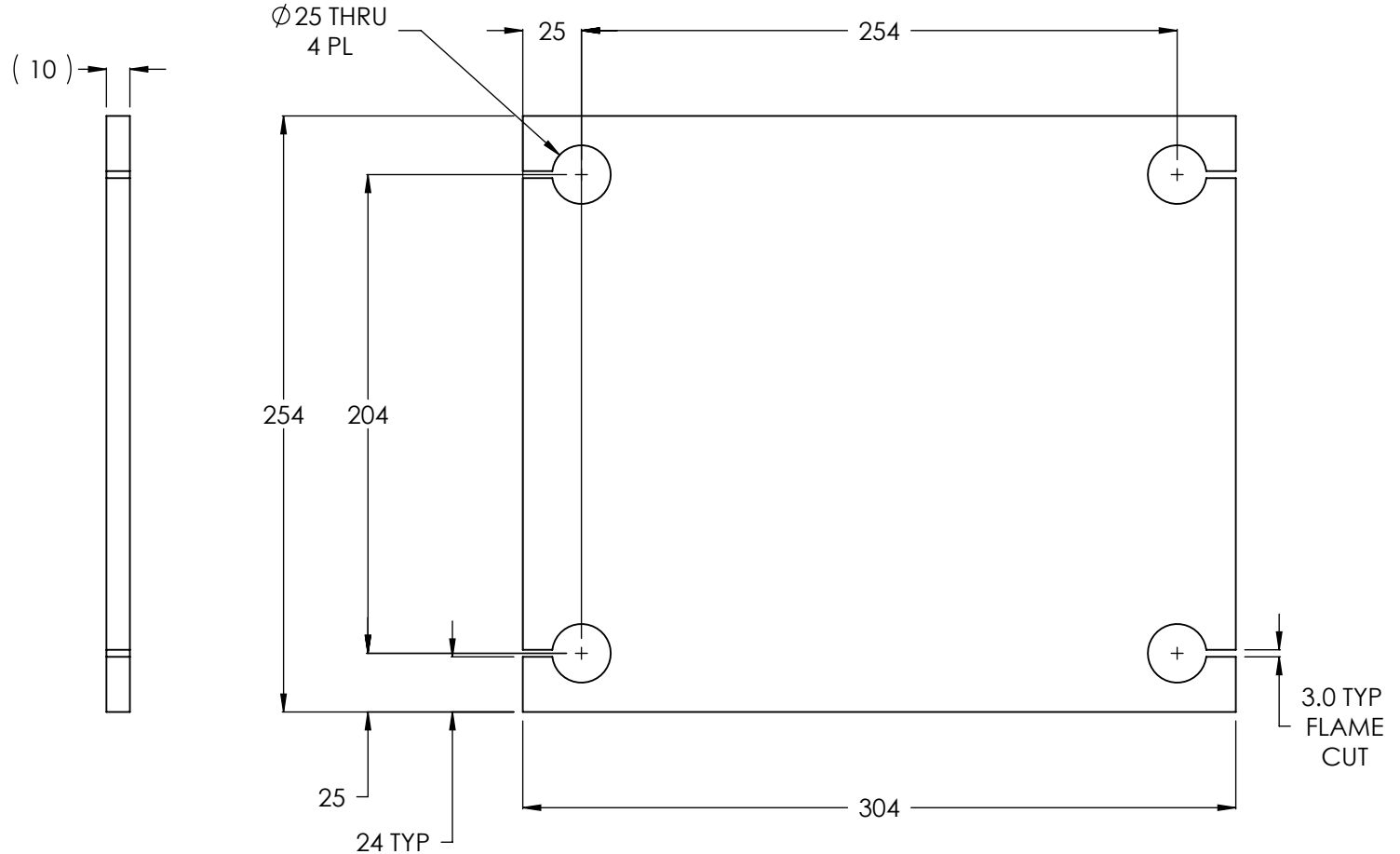
1. BREAK AND DEBURR ALL SHARP EDGES 0.3mm
2. REMOVE ALL WELD SPLATTER
3. PAINT BENDPAK BLUE

ITEM NO.	PART NUMBER	DESCRIPTION		QTY.	REV
1	5701732	HDS-14 CYLINDER FLANGE ARM		1	A
2	5736820	HDS/HDSO-14 CABLE RETAINER BLOCK		1	A
3	5745317	HD-14 SERIES CYLINDER FLANGE ARM SPACER		1	B
4	5735289	HD/HDS-14 CYLINDER FLANGE ARM SPACER		1	B


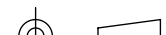
DO NOT SCALE DRAWING		NAME	DATE	 BendPak. 1645 LEMONWOOD DR. SANTA PAULA, CA 93060
DIMENSIONS ARE IN MM TOLERANCES: 0. = ±1.5 0.0 = ±0.5 ANGULAR: 0. = ±2° SURFACE FINISH 1.6 ISO Ra μm FOR MACHINED SURFACES UNLESS OTHERWISE SPECIFIED	DRAWN	TM	08/04/2014	
	CHECKED			
	THIRD ANGLE PROJECTION			TITLE: HDS/HDSO-14 CYLINDER FLANGE ARM WELDMENT
				
PROPRIETARY AND CONFIDENTIAL THE INFORMATION CONTAINED IN THIS DRAWING IS THE SOLE PROPERTY OF BENDPAK INC. ANY REPRODUCTION IN PART OR AS A WHOLE WITHOUT THE WRITTEN PERMISSION OF BENDPAK INC. IS PROHIBITED.			SIZE DWG. NO.	REV
			A 5600924	A
			SCALE: 1:2	SHEET 1 OF 2



ISOMETRIC VIEW
FOR REFERENCE ONLY
DO NOT SCALE



REVISION				
REV.	DESCRIPTION	DATE	EDITED BY	ECO#
B	UPDATE SHEET TEMPLATE	03/31/2008	MT	00157
B-001	CHANGED SURFACE FINISH FROM 3.2 μm TO 1.6 $\text{Ra } \mu\text{m}$	09/10/2008	GJ	00237
B-002	UPDATED NEXT ASSEMBLY	10/30/2008	AC	00174
B-003	UPDATED NEXT ASSEMBLY	11/12/2008	TM	00249
C	UPDATED TITLE TO REFLECT WHERE USED	02/26/2010	AC	00333
D	UPDATED TITLE TO REFLECT WHERE USED	06/02/2010	AC	00366
D-001	UPDATED NEXT ASSEMBLIES	11/01/2011	TM	00487

NEXT ASSEMBLY 5600182 5600183 5600184 5600185 5600524 5600525 5600639 5600640 5600903 5600904 5620236 5620237	DO NOT SCALE DRAWING		NAME	DATE	 BendPak. <small>PROVIDING AUTOMOTIVE SERVICE SOLUTIONS</small> 1645 LEMONWOOD DR. SANTA PAULA, CA 93060	
	DIMENSIONS ARE IN MM TOLERANCES: 0. = ±1.5 0.0 = ±0.5	DRAWN	GJZ	02/29/2008		
	ANGULAR: 0. = ±2°	CHECKED			TITLE: HD-7P/7500/9/14 SERIES POST BASE PLATE	
	SURFACE FINISH 1.6 ISO Ra μm FOR MACHINED SURFACES UNLESS OTHERWISE SPECIFIED	THIRD ANGLE PROJECTION 				
	MATERIAL: HR ASTM A36 OR Q235 GB/T 700					
	SIZE: 10mm THK					
PROPRIETARY AND CONFIDENTIAL THE INFORMATION CONTAINED IN THIS DRAWING IS THE SOLE PROPERTY OF BENDPAK INC. ANY REPRODUCTION IN PART OR AS A WHOLE WITHOUT THE WRITTEN PERMISSION OF BENDPAK INC. IS PROHIBITED.			SIZE	DWG. NO.	REV	
			A	5731632	D	
				SCALE: 1:3		SHEET 1 OF 1

NOTE: UNLESS OTHERWISE SPECIFIED.

1. BREAK AND DEBURR ALL SHARP EDGES 0.3mm.

PART SPECIFICATION FORM

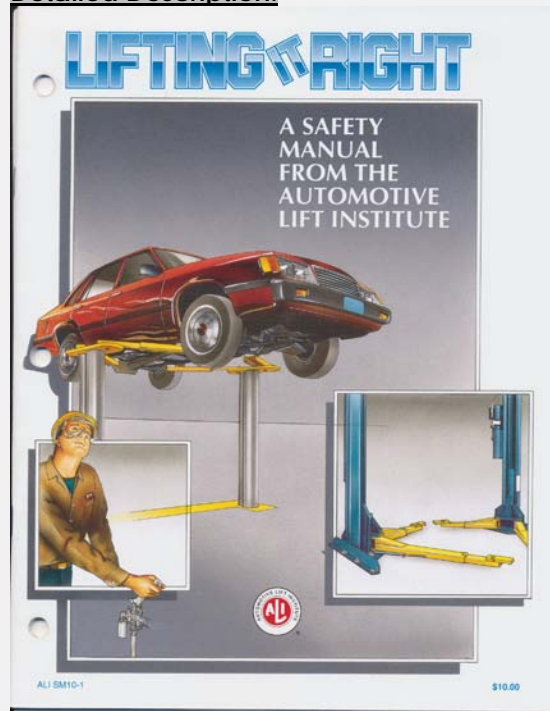
BENDPAK Number:	5900147
MRP Description:	SAFETY MANUAL ALI / SM 93-1
Date:	12/28/2010
ECO :	00431

1. Engineering Specification

Application:

ALI SAFETY MANUAL

Detailed Description:



2. Vendor Information

Approved Vendor	Vendor Part #	Contact #	Preferred Vendor
1)			

PART SPECIFICATION FORM

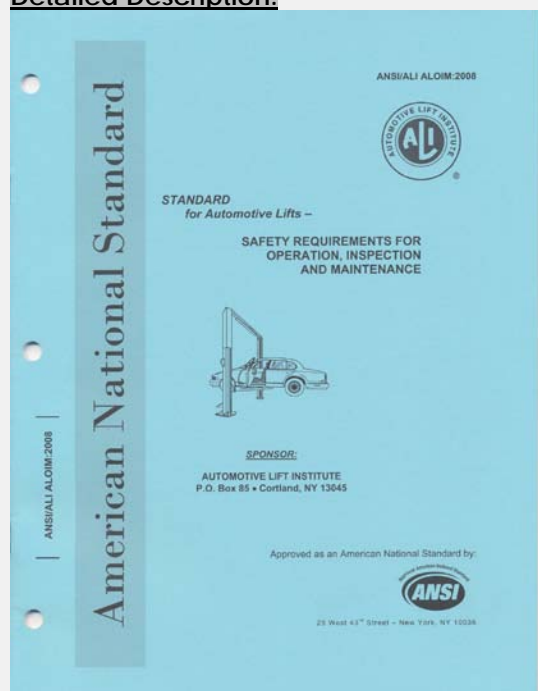
BENDPAK Number:	5900152
MRP Description:	ALIGN OIM OPERATION INSPECTION & MAINTENANCE
Date:	12/28/2010
ECO :	00431

1. Engineering Specification

Application:

ALI OPERATION INSPECTION & MAINTENANCE MANUAL

Detailed Description:



2. Vendor Information

Approved Vendor	Vendor Part #	Contact #	Preferred Vendor
1)			

PART SPECIFICATION FORM

BENDPAK Number:	5900161
MRP Description:	HDS-14/14X INSTALLATION MANUAL
Date:	07/12/2013
ECO :	00593

1. Engineering Specification

Application:
INSTALLATION MANUAL

Detailed Description:

WARNING
IMPORTANT SAFETY INSTRUCTIONS
SAVE THESE INSTRUCTIONS
PLEASE READ THE ENTIRE CONTENTS OF THIS MANUAL PRIOR TO INSTALLATION AND OPERATION. BY PROCEEDING WITH LIFT INSTALLATION AND OPERATION YOU AGREE THAT YOU FULLY UNDERSTAND AND COMPREHEND THE FULL CONTENTS OF THIS MANUAL. FORWARD THIS MANUAL TO ALL OPERATORS. FAILURE TO OPERATE THIS EQUIPMENT AS DIRECTED MAY CAUSE INJURY OR DEATH.
Manual REV D 12-05-13
gjh 5002/01

EUROPEAN USERS
400V 50Hz SUPPLY DETAILS ARE INCLUDED WITH ELECTRICAL CONTROL BOX. DISREGARD SUPPLY WIRING DETAILS IN THIS MANUAL.

INSTALLATION AND OPERATION MANUAL
14,000 POUND CAPACITY
COMMERCIAL GRADE
FOUR-POST LIFTS
MODELS:
HDS-14
HDS-14X

READ FIRST
Do not operate this machine until you read and understand all warnings, instructions and cautions in this manual.

ORIGINAL INSTRUCTIONS IN ENGLISH LANGUAGE
RECEIVING
The shipment should be thoroughly inspected as soon as it is received. The signed Bill of Lading is acknowledgment by the shipping carrier as receipt of this product as listed in your invoice as being in a good condition of shipment. If any of these goods listed on this Bill of Lading are missing or damaged, do not accept goods until the shipping carrier makes a notation on the freight bill of the missing or damaged goods. Do this for your own protection.

BE SAFE
Your new lift was designed and built with safety in mind. However, your overall safety can be increased with proper training and thoughtful operation on the part of the operator. DO NOT operate or repair this equipment without reading this manual and the important safety instructions shown inside. Keep this operation manual near the lift at all times. Make sure that ALL USERS read and understand this manual.

BP BendPak
PROVIDING AUTOMOTIVE SERVICE SOLUTIONS
1645 Lemonwood Dr.
Santa Paula, CA. 93060, USA
Toll Free 1-800-933-9970
Tel: 1-805-933-9970
Fax: 1-805-933-9160
www.bendpak.com

2. Vendor Information

Approved Vendor	Vendor Part #	Contact #	Preferred Vendor
1)			

PART SPECIFICATION FORM

BENDPAK Number:	5905103
MRP Description:	WARNING ALI/WL 200
Date:	05/06/2013
ECO :	00593

1. Engineering Specification

Application:

ALI 4 POST SAFETY STICKER KIT

Detailed Description:



SIZE: 11" L x 8.5" W (279mm x 216mm)

2. Vendor Information

Approved Vendor	Vendor Part #	Contact #	Preferred Vendor
1)			

PART SPECIFICATION FORM

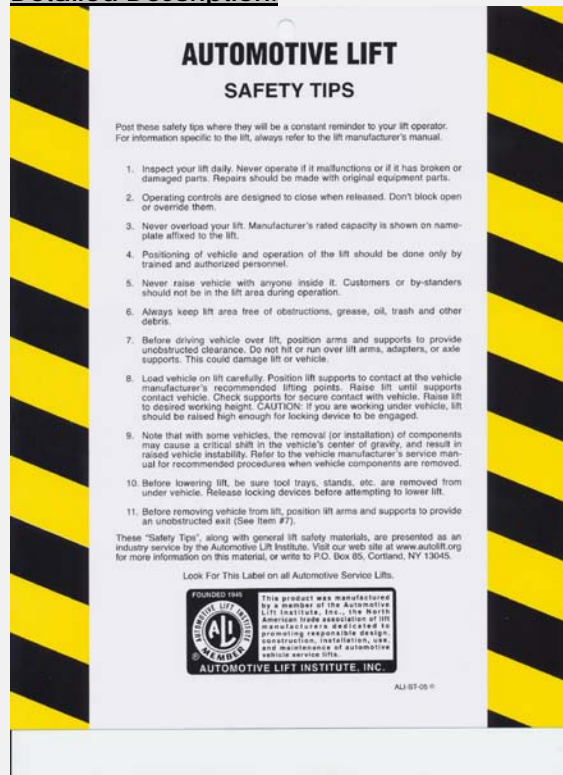
BENDPAK Number:	5905151
MRP Description:	SAFETY TIPS CARD ALI-ST 90
Date:	12/28/2010
ECO :	00431

1. Engineering Specification

Application:

ALI SAFETY TIPS

Detailed Description:



2. Vendor Information

Approved Vendor	Vendor Part #	Contact #	Preferred Vendor
1)			

PART SPECIFICATION FORM

BENDPAK Number:	5905311
MRP Description:	BENDPAK LABEL; 4 x 38" WHITE INK
Date:	05/13/2015
ECO :	00689

1. Engineering Specification

Application:

BENDPAK LABEL

Detailed Description:



SIZE: 38" L x 4.25" W (965mm x 108mm)

- Material: Yellow Represents Clear Adhesive PET
- Size: 4.25"W x 38"H
- Thickness: 4 Mil
- Finish: Polished
- Ink: U.V. protected, Opaque White
- Print Process: Silk Screen, 85 line-screen (Opaque White ink, clear adhesive PET will fill in blank areas.)
- Lamination: Clear-gloss over-laminate for abrasion, chemical, and ultra violet protection

2. Vendor Information

Approved Vendor	Vendor Part #	Contact #	Preferred Vendor
1)			

B

E

N

D

P

A

K

BendPak

ABOVE-GROUND LIFTS



BendPak®
PROVIDING AUTOMOTIVE SERVICE SOLUTIONS



1645 Lemonwood Drive
Santa Paula, CA 93060
U.S.A.
(805) 933-9970
www.bendpak.com

P/N 5905311

PART SPECIFICATION FORM

BENDPAK Number:	5905465
MRP Description:	MANUFACTURER LABEL
Date:	05/07/2013
ECO :	00593

1. Engineering Specification

Application:

MANUFACTURER LABEL

Detailed Description:

MFD. BY BENDPAK INC.

LIFT TYPE: SURFACE MOUNT CAPACITY: MED/HVY DTY
 POWER: ELECTRIC/HYDRAULIC ANCHORS: AS EQUIPPED
 INSTALLATION - SEE OWNERS GUIDE OR CONTACT FACTORY

SHIPPING DAMAGE CLAIMS

WHEN THIS EQUIPMENT IS SHIPPED, TITLE PASSES TO THE PURCHASER UPON RECEIPT FROM THE CARRIER. CONSEQUENTLY, CLAIMS FOR THE MATERIAL DAMAGED IN SHIPMENT MUST BE MADE BY THE PURCHASER AGAINST THE TRANSPORTATION COMPANY AT THE TIME SHIPMENT IS RECEIVED.

PLEASE READ ALL OPERATORS/USERS MANUAL(S) PRIOR TO INSTALLATION AND OPERATION. UNDERSTAND AND COMPREHEND THE FULL CONTENTS OF EACH MANUAL(S) PRIOR TO INSTALLATION AND OPERATION. DELIVER THE MANUAL(S) TO ALL OPERATORS. FAILURE TO OPERATE THIS EQUIPMENT AS DIRECTED MAY CAUSE INJURY OR DEATH.

IMPORTANT NOTE:

BENDPAK LIFTS ARE SUPPLIED WITH CONCRETE FASTENERS MEETING THE CRITERIA AS PRESCRIBED BY ASTM E488 - 96(2003). LIFT BUYERS ARE RESPONSIBLE FOR ANY SPECIAL REGIONAL STRUCTURAL AND/OR SEISMIC ANCHORING REQUIREMENTS SPECIFIED BY ANY OTHER AGENCIES AND/OR CODES SUCH AS THE UNIFORM BUILDING CODE (UBC) AND/OR INTERNATIONAL BUILDING CODE (IBC).



INTERNAL BAR CODE - FOR FACTORY AUDIT ONLY 34086

BPK	STYOT	P20KVR	X18576	HVY DTY/ GVR
				832

THE MANUFACTURE, USE, SALE OR IMPORT OF THIS PRODUCT MAY BE SUBJECT TO ONE OR MORE UNITED STATES PATENTS, OR PENDING APPLICATIONS, OWNED BY BENDPAK, INC.

ENGINEERED BY BENDPAK INC USA

MADE IN CHINA

SIZE: 5.125" L x 5.125" W (130mm x 130mm)

2. Vendor Information

Approved Vendor	Vendor Part #	Contact #	Preferred Vendor
1)			

MFD. BY BENDPAK INC.

LIFT TYPE: SURFACE MOUNT CAPACITY: MED/HVY DTY

POWER: ELECTRIC/HYDRAULIC ANCHORS: AS EQUIPPED

INSTALLATION - SEE OWNERS GUIDE OR CONTACT FACTORY

SHIPPING DAMAGE CLAIMS

WHEN THIS EQUIPMENT IS SHIPPED, TITLE PASSES TO THE PURCHASER UPON RECEIPT FROM THE CARRIER. CONSEQUENTLY, CLAIMS FOR THE MATERIAL DAMAGED IN SHIPMENT MUST BE MADE BY THE PURCHASER AGAINST THE TRANSPORTATION COMPANY AT THE TIME SHIPMENT IS RECEIVED.

PLEASE READ ALL OPERATORS/USERS MANUAL(S) PRIOR TO INSTALLATION AND OPERATION. UNDERSTAND AND COMPREHEND THE FULL CONTENTS OF EACH MANUAL(S) PRIOR TO INSTALLATION AND OPERATION. DELIVER THE MANUAL(S) TO ALL OPERATORS. FAILURE TO OPERATE THIS EQUIPMENT AS DIRECTED MAY CAUSE INJURY OR DEATH.

IMPORTANT NOTE:

BENDPAK LIFTS ARE SUPPLIED WITH CONCRETE FASTENERS MEETING THE CRITERIA AS PRESCRIBED BY ASTM E488 - 96(2003). LIFT BUYERS ARE RESPONSIBLE FOR ANY SPECIAL REGIONAL STRUCTURAL AND/OR SEISMIC ANCHORING REQUIREMENTS SPECIFIED BY ANY OTHER AGENCIES AND/OR CODES SUCH AS THE UNIFORM BUILDING CODE (UBC) AND/OR INTERNATIONAL BUILDING CODE (IBC).



INTERNAL BAR CODE - FOR FACTORY AUDIT ONLY 34086

BPK	STYOT	P20KVR	X18576	HVY DTY/ GVR 832
-----	-------	--------	--------	---------------------

THE MANUFACTURE, USE, SALE OR IMPORT OF THIS PRODUCT MAY BE SUBJECT TO ONE OR MORE UNITED STATES PATENTS, OR PENDING APPLICATIONS, OWNED BY BENDPAK, INC.

ENGINEERED BY BENDPAK INC USA

MADE IN CHINA

PART SPECIFICATION FORM

BENDPAK Number:	5905556
MRP Description:	4-POST SAFETY DECAL
Date:	05/06/2013
ECO :	00593

1. Engineering Specification

Application:

4-POST SAFETY DECAL

Detailed Description:



SIZE: 23" L x 4" W (584mm x 100mm)

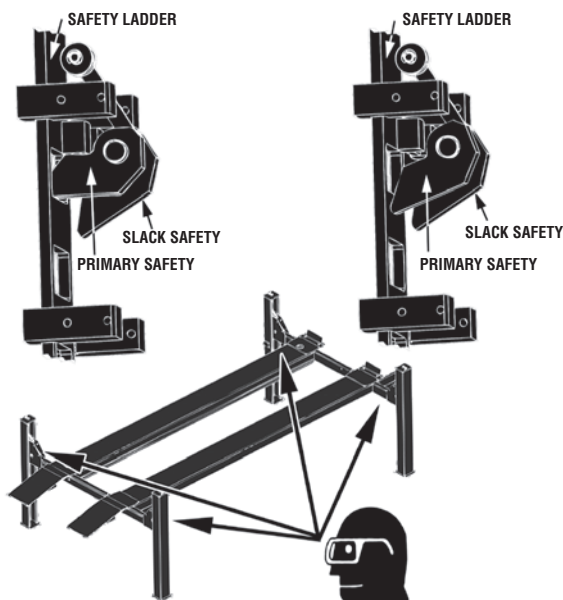
2. Vendor Information

Approved Vendor	Vendor Part #	Contact #	Preferred Vendor
1)			

DANGER

**SAFETY LOCKS ENGAGED
– OK TO PROCEED –**

**SAFETY LOCK NOT ENGAGED
– REMAIN CLEAR –**



VISUALLY CONFIRM THAT ALL PRIMARY SAFETY LOCKS ARE ENGAGED BEFORE ENTERING WORK AREA.

Suspension components used on this lift are intended to raise and lower lift only and are NOT meant to be load-holding devices. Remain clear of elevated lift unless visual confirmation is made that all primary safety locks are fully engaged and the lift is LOWERED onto the safety locks. Refer to installation/operation manual for proper safety lock procedures and/or further instruction.

WARNING

WIRE ROPE INSPECTION AND MAINTENANCE

- Lifting cables should be replaced every (3) three years or when visible signs of damage are apparent. DO NOT USE LIFT WITH DEFECTIVE OR WORN CABLES.
- Wire rope should be maintained in a well-lubricated condition at all times. Wire rope is only fully protected when each wire strand is lubricated both internal and external. Excessive wear will shorten the life of the wire rope. The factory suggests wire rope lubricant that penetrates to the core of the rope and provides long-term lubrication between each individual strand. In order to make sure that the inner layers of the rope remain well lubricated, lubrication should be carried out at intervals not exceeding three (3) months during operation.
- All sheaves and guide rollers in contact with the moving wire rope should be given regular visual checks for surface wear and lubricated to make sure that they run freely. This operation should be carried out at appropriate intervals generally not exceeding three (3) months during operation. For all sheave axles, the factory recommends standard wheel bearing grease. For all sheaves and/or guide rollers, the factory recommends 90-WT gear oil or similar heavy lubricant applied by any method including pump/spray dispensing, brush, hand and/or swabbing.

Failure to read, understand and follow these instructions may cause death or serious injury. Read and understand these instructions before using lift.

IMPORTANT OPERATION / MAINTENANCE INSTRUCTIONS - PLEASE READ

TO RAISE LIFT

- ✓ Position vehicle tires at the center of each runway.
- ✓ Set parking brake or use wheel chock to hold vehicle in position.
- ✓ Before raising vehicle, be sure all personnel are clear of lift and surrounding area. Pay careful attention to overhead clearances.
- ✓ Raise lift to desired height by pressing push button on power unit.
- ✓ Maintain visual contact with vehicle and surrounding area at all times while lowering lift.
- ✓ **STOP IMMEDIATELY** if load shifts or becomes unlevel.
- ✓ After vehicle is raised to desired height, lower lift onto the nearest safety lock. Do not allow cables to become excessively slack.
- ✓ **ALWAYS INSURE ALL PRIMARY SAFETY LOCKS ARE ENGAGED** before entering work area.

TO LOWER LIFT

- ✓ Before lowering vehicle, be sure all personnel, tools and equipment are clear of lift and surrounding area.
- ✓ Raise lift by pressing **RAISE BUTTON** on power unit. Elevate lift at least two inches to allow adequate clearance for locks to clear.
- ✓ Press push button **AIR SAFETY VALVE** and **HOLD**.
- ✓ Lower vehicle by pressing power unit lowering handle until lift has descended completely.
- ✓ When lowering lift **PAY CAREFUL ATTENTION** that all personnel and objects are kept clear.
- ✓ **ALWAYS** keep a visual line of site on lift **AT ALL TIMES**.
- ✓ **ALWAYS** make sure that **ALL LOCKS** are disengaged. If one of the locks inadvertently engages on descent, lift and/or vehicle may disrupt causing personal injury or death.

REQUIRED MONTHLY MAINTENANCE

- ✓ **ALWAYS** consult operation manual for factory recommended maintenance.
- ✓ Adjust lift cables to ensure lift raises level and safety locks engage simultaneously.
- ✓ Check all chain/cable connections, bolts and pins to insure proper mounting.
- ✓ Visually inspect safety locks for proper operation.
- ✓ Visually inspect concrete floor. **DO NOT USE LIFT** if concrete foundation shows signs of deterioration.
- ✓ Inspect all anchor bolts and retighten if necessary.
- ✓ Check columns for squareness and plumb.
- ✓ Inspect all bolts and/or fasteners making sure they are properly secured.
- ✓ Make a visual inspection of **ALL MOVING PARTS** and check for excessive signs of wear.
- ✓ Replace **ALL FAULTY PARTS** before lift is put back into operation.

WARNING

1. **WARNING:** If cement anchor bolts are loose, or any component of the lift is found to be defective, **DO NOT USE LIFT!**
2. Never operate the lift with any person or equipment below.
3. Never exceed rated capacity.
4. Always insure safety locks are engaged before any attempt is made to work on or near vehicle.
5. Never leave lift in an elevated position unless the safety locks are engaged.
6. Do not permit electric motor to get wet! Motor damage caused by dampness is not covered under warranty.

PART SPECIFICATION FORM

BENDPAK Number:	5905557
MRP Description:	MAX CAP DANGER 14K
Date:	05/06/2013
ECO :	00593

1. Engineering Specification

Application:

LIFT CAPACITY STICKER

Detailed Description:

SIZE: 5" L x 4" W (127mm x 100mm)



2. Vendor Information

Approved Vendor	Vendor Part #	Contact #	Preferred Vendor
1)			

DANGER

THE MAXIMUM LIFTING CAPACITY FOR THIS LIFT IS DESCRIBED BELOW

Maximum Lifting Capacity

14,000 lbs. / 6350 kg

Max. Lifting Cap. / Front of Lift Center

7000 lbs. / 3175 kg

Max. Lifting Cap. / Rear of Lift Center

7000 lbs. / 3175 kg

Exceeding the weight capacity of this lift can damage lift and/or property and may cause personal harm, injury or death to operators and/or bystanders. All vehicles MUST be positioned on lift with CENTER OF GRAVITY midway between adapters and/or centered on runways. Damage to lift due to overloading or misuse IS NOT covered under warranty.

PART SPECIFICATION FORM


BENDPAK Number:	5905940
MRP Description:	PRODUCT DATA LABEL
Date:	05/06/2013
ECO :	00593

1. Engineering Specification

Application:

PRODUCT DATA LABEL

Detailed Description:



SANTA PAULA, CA USA
 WWW.BENDPAK.COM

LIFT TYPE: SURFACE MOUNT CAP: MED/HVY DTY MFG. BPK SEE DATA PLATE FOR PRODUCT DETAILS
 POWER: ELECTRIC/HYDRAULIC INSTALLATION - SEE OWNERS GUIDE OR CONTACT FACTORY

SAFETY INSTRUCTIONS: IF ATTACHMENTS, ACCESSORIES OR CONFIGURATION MODIFYING COMPONENTS THAT ARE LOCATED IN THE LOAD PATH, AFFECT OPERATION OF THE LIFT, AFFECT THE LIFT ELECTRICAL LISTING OR AFFECT INTENDED VEHICLE ACCOMMODATION ARE USED ON THIS LIFT AND, IF THEY ARE NOT CERTIFIED FOR USE ON THIS LIFT, THEN THE CERTIFICATION OF THIS LIFT SHALL BECOME NULL AND VOID. CONTACT THE PARTICIPANT FOR INFORMATION PERTAINING TO CERTIFIED ATTACHMENTS, ACCESSORIES OR CONFIGURATION MODIFYING COMPONENTS.

BENDPAK LIFTS ARE SUPPLIED WITH CONCRETE FASTENERS MEETING THE CRITERIA AS PRESCRIBED BY ASTM E488 - 96(2003). LIFT BUYERS ARE RESPONSIBLE FOR ANY SPECIAL REGIONAL STRUCTURAL AND/OR SEISMIC ANCHORING REQUIREMENTS SPECIFIED BY ANY OTHER AGENCIES AND/OR CODES SUCH AS THE UNIFORM BUILDING CODE (UBC) AND/OR INTERNATIONAL BUILDING CODE (IBC).

THE MANUFACTURE, USE, SALE OR IMPORT OF THIS PRODUCT MAY BE SUBJECT TO ONE OR MORE UNITED STATES PATENTS, OR PENDING APPLICATIONS, OWNED BY BENDPAK, INC.
 DO NOT REMOVE ENGINEERED BY BENDPAK INC. USA MADE IN CHINA

SIZE: 2.3" L x 4.5" W (58mm x 114mm)

2. Vendor Information

Approved Vendor	Vendor Part #	Contact #	Preferred Vendor
1)			



SANTA PAULA, CA USA

WWW.BENDPAK.COM

PN 5905940

LIFT TYPE: SURFACE MOUNT CAP: MED/HVY DTY MFG. BPK SEE DATA PLATE FOR PRODUCT DETAILS

POWER: ELECTRIC/HYDRAULIC INSTALLATION - SEE OWNERS GUIDE OR CONTACT FACTORY

SAFETY INSTRUCTIONS: IF ATTACHMENTS, ACCESSORIES OR CONFIGURATION MODIFYING COMPONENTS THAT ARE LOCATED IN THE LOAD PATH, AFFECT OPERATION OF THE LIFT, AFFECT THE LIFT ELECTRICAL LISTING OR AFFECT INTENDED VEHICLE ACCOMMODATION ARE USED ON THIS LIFT AND, IF THEY ARE NOT CERTIFIED FOR USE ON THIS LIFT, THEN THE CERTIFICATION OF THIS LIFT SHALL BECOME NULL AND VOID. CONTACT THE PARTICIPANT FOR INFORMATION PERTAINING TO CERTIFIED ATTACHMENTS, ACCESSORIES OR CONFIGURATION MODIFYING COMPONENTS.

BENDPAK LIFTS ARE SUPPLIED WITH CONCRETE FASTENERS MEETING THE CRITERIA AS PRESCRIBED BY ASTM E488 - 96(2003). LIFT BUYERS ARE RESPONSIBLE FOR ANY SPECIAL REGIONAL STRUCTURAL AND/OR SEISMIC ANCHORING REQUIREMENTS SPECIFIED BY ANY OTHER AGENCIES AND/OR CODES SUCH AS THE UNIFORM BUILDING CODE (UBC) AND/OR INTERNATIONAL BUILDING CODE (IBC).

THE MANUFACTURE, USE, SALE OR IMPORT OF THIS PRODUCT MAY BE SUBJECT TO ONE OR MORE UNITED STATES PATENTS, OR PENDING APPLICATIONS, OWNED BY BENDPAK, INC.

DO NOT REMOVE

ENGINEERED BY BENDPAK INC. USA

MADE IN CHINA

PART SPECIFICATION FORM

BENDPAK Number:	5905953
MRP Description:	LABEL D (4-POST LIFTS CE)
Date:	12/04/2015
ECO :	00724

1. Engineering Specification

Application:

DATA SERIAL TAG, 4-POST LIFTS, CE

Detailed Description:



BendPak Santa Paula, CA USA
www.bendpak.com

MODEL NUMBER	SERIAL NUMBER
LIFT CAPACITY	DATE OF MFG.
ROLLING JACK MAX CAP.	MAX PSI / BAR

VOLTAGE

☐ 110-240VAC, 50-60 Hz, 1 Ph
 ☐ 208-440VAC, 50-60 Hz, 3 Ph
☐ 208-240VAC, 50-60 Hz, 1 Ph
 ☐ 208-440VAC, 50-60 Hz, 3 Ph

DANGER!
Disconnect Power
Before Servicing

CE ENE PM 5905953

SIZE: 3.38" L x 3.38" W
(85.7mm x 85.7mm)

2. Vendor Information (Or for Reference)

Approved Vendor	Vendor Part #	Contact #	Preferred Vendor
1)			
2)			
OR BENDPAK ENGINEERING APPROVED EQUIVALENT			



Santa Paula, CA USA
www.bendpak.com

MODEL NUMBER

SERIAL NUMBER

LIFT CAPACITY

DESCRIPTION

ROLLING JACK MAX CAP.

MAX PSI / BAR

VOLTAGE

☐ 110-240VAC, 50-60 Hz, 1 Ph

☐ 380-415VAC, 50-60 Hz, 3 Ph

☐ 208-240VAC, 50-60 Hz, 1 Ph

☐ 208-440VAC, 50-60 Hz, 3 Ph

DATE OF MFG.



DANGER!

Disconnect Power
Before Servicing

WARRANTY VOID IF DATA PLATE IS REMOVED



PN 5905953



QCR: 344

HDS-14 Packaging

This report is intended to show how to package an HDS-14

Report taken by: Adam Roberts
Date: 10/9/15

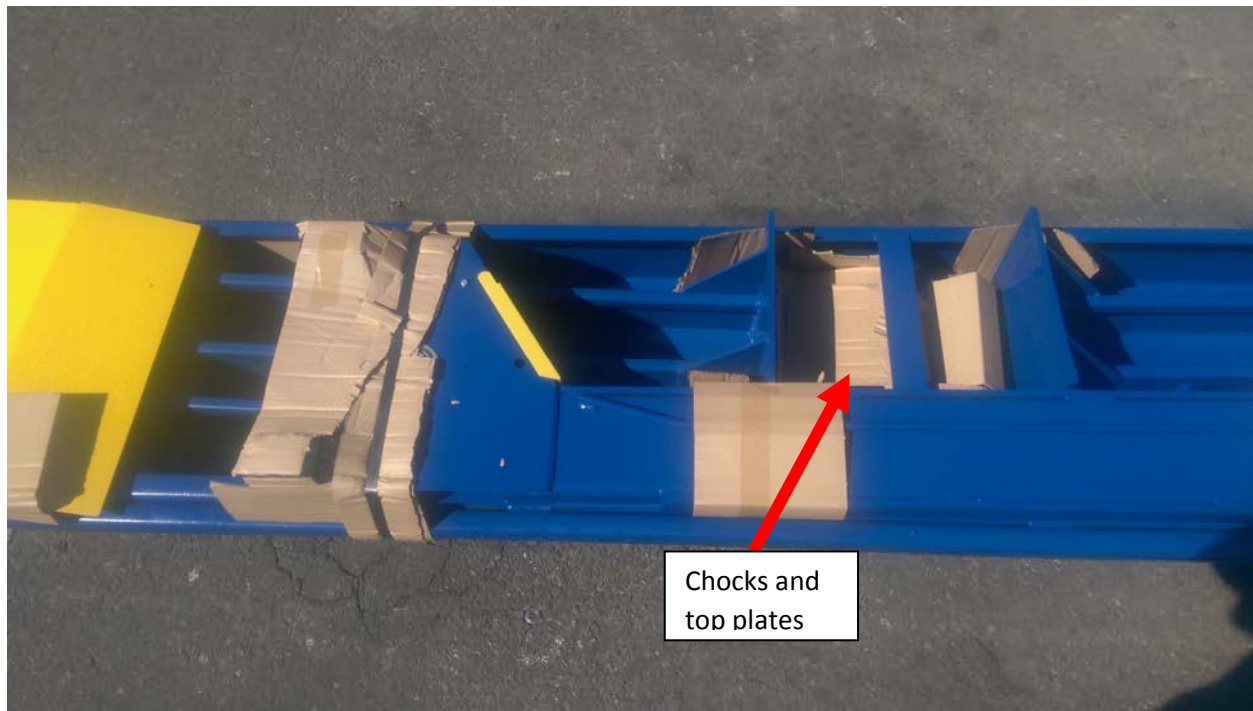


Power side ramp will have: 1 crosstube, 1 parts box, cylinder installed and safety ladders.

Offside ramp will have: 1 crosstube 2 approach ramps, 4 posts, 4 top plates, 2 tire stops and 2 tire chocks.



2 posts will be positioned opposite of each other with 2 approach ramps on top. Note that there is cardboard in-between each spot where the parts contact each other. They are then secured with a steel strap.



The crosstube will positioned as shown with the tire stops, top plates and tire chocks packaged in the middle.



Power side ramp will have 4 safety ladders fully wrapped in plastic with cardboard where it contacts to ramp.



The parts box will be placed in the center in front of the cylinder. Then the crosstube is placed on top and secured with a steel strap



Once all items are secure, each section is wrapped with cardboard.



Thicker cardboard is then added to the bottom and both sides and secured with plastic straps. We are using a one piece cardboard that has folds for the sides.



Shown is all the thicker cardboard pieces added.



Finally fully wrap in plastic.



Here is the lift complete and stacked.



2016
CE-Approved
4 Post Lifts
Colors & Graphics

4/7/16

CONFIDENTIAL INFORMATION.

You may not disclose, print, copy or disseminate this information.
Unauthorized use is a violation of federal criminal law.

4 Post Lifts Product Decal Positioning

A



Total of 4

PN 5905311

BPK Post Branding Decal-Large_5905311.pdf:

Material: Clear Adhesive PET

Size: 4.25"W x 38"H

Thickness: 4 Mil

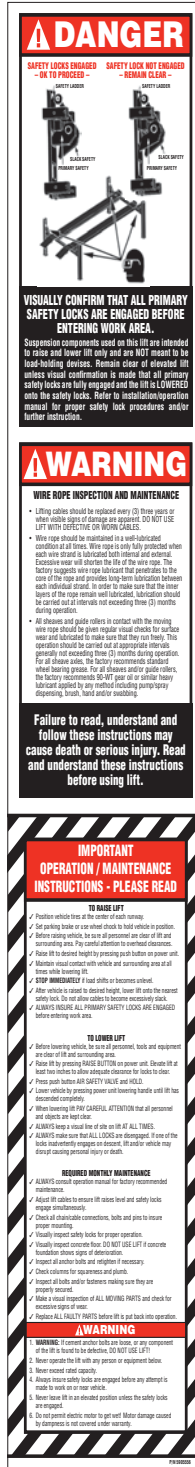
Finish: Polished

Ink: U.V. protected, Opaque White

Print Process: Silk Screen, 85 line-screen (Yellow color in file represents what should be clear PET material and SHOULD NOT print as Yellow ink. White area in file represents Opaque White ink.)

Lamination: Clear-gloss over-laminate for abrasion, chemical, and ultra violet protection

B



PN 5905556

4_Post_Safety_Decal.pdf:

Size: 4"W x 23"H

Material: White Vinyl Pressure Sensitive Adhesive

Thickness: 4 Mil

Ink: U.V. protected CMYK 2/C Process

Finish: Polished

Print Process: Offset Lithography - 200 line-screen or 300 p.p.i. for digital

Lamination: Clear-gloss over-laminate for abrasion, chemical, and ultra violet protection

C

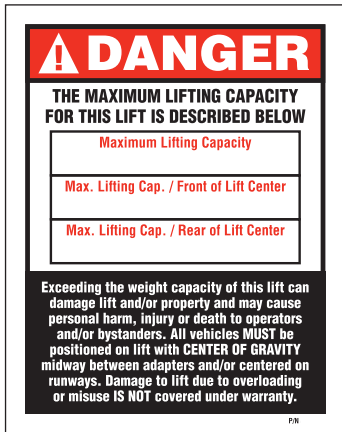


Ali_4_Post_labels.pdf:

(Order Labels from ALI)

4 Post Lifts Product Decal Positioning

***D**



P/N 5905401 - Max Cap. Danger 7k
P/N 5905695 - Max. Cap. Danger 7500
P/N 5905402 - Max Cap. Danger 9k
P/N 5905557 - Max. Cap. Danger 14K
P/N 5905406 - Max Cap. Danger 18k
P/N 5905407 - Max. Cap. Danger 27K
P/N 5905408 - Max. Cap. Danger 35K
P/N 5905409 - Max. Cap. Danger 40K

***Max. Cap. Danger.pdf:**

Size: 4"W x 5"H

Material: White Vinyl Pressure Sensitive Adhesive

Thickness: 4 Mil

Ink: U.V. protected CMYK 2/C Process

Finish: Polished

Print Process: Offset Lithography - 200 line-screen or 300 p.i. for digital

Lamination: Clear-gloss over-laminate for abrasion, chemical, and ultra violet protection

***E**



P/N 5905645 - NRTL_Lifting_Cap_Label_7K
P/N 5905700 - NRTL_Lifting_Cap_Label_7500
P/N 5905650 - NRTL_Lifting_Cap_Label_9k
P/N 5905665 - NRTL_Lifting_Cap_Label_14k
P/N 5905675 - NRTL_Lifting_Cap_Label_18k
P/N 5905680 - NRTL_Lifting_Cap_Label_27k
P/N 5905685 - NRTL_Lifting_Cap_Label_35K
P/N 5905690 - NRTL_Lifting_Cap_Label_40K

***NRTL_Lifting_Cap_Label_.pdf:**

Size: 4.5"W x 3.25"H

Material: White Vinyl Pressure Sensitive Adhesive

Thickness: 4 Mil

Ink: U.V. protected CMYK 2/C Process

Finish: Polished

Print Process: Offset Lithography - 200 line-screen or 300 p.i. for digital

Lamination: Clear-gloss over-laminate for abrasion, chemical, and ultra violet protection

***DEPENDS ON LIFT MODEL AND CAPACITY**

F



PN 5905940

Product_Data_Label_5905940-New.pdf:

Size: 4.5"W x 2.3"H

Material: White Vinyl Pressure Sensitive Adhesive

Thickness: 4 Mil

Ink: U.V. protected CMYK 2/C Process

Finish: Polished

Print Process: Offset Lithography - 200 line-screen or 300 p.i. for digital

Lamination: Clear-gloss over-laminate for abrasion, chemical, and ultra violet protection

G



PN 5905953

2015_Serial_Tag-D-5905953.jpg:

Size: 3"W x 3"H

Material: Material: 2 Mil. Matte Silver Polyester (Flex-PSE)

Print using thermal transfer printer with resin ribbon

Ink: 1 Color-Black

H



ALI-Gold-Label-5905326.jpg

****FOR ALI APPROVED LIFTS ONLY**

4 Post Lifts Product Decal Positioning

****FOR ALI APPROVED
LIFTS ONLY**

D, H, G, F

Front of Post
(Top to Bottom)

E, C

Back of Post
(Top to Bottom)

**Place 1.25" from top of
Power Unit bracket to
the bottom of ALI Label.**

B

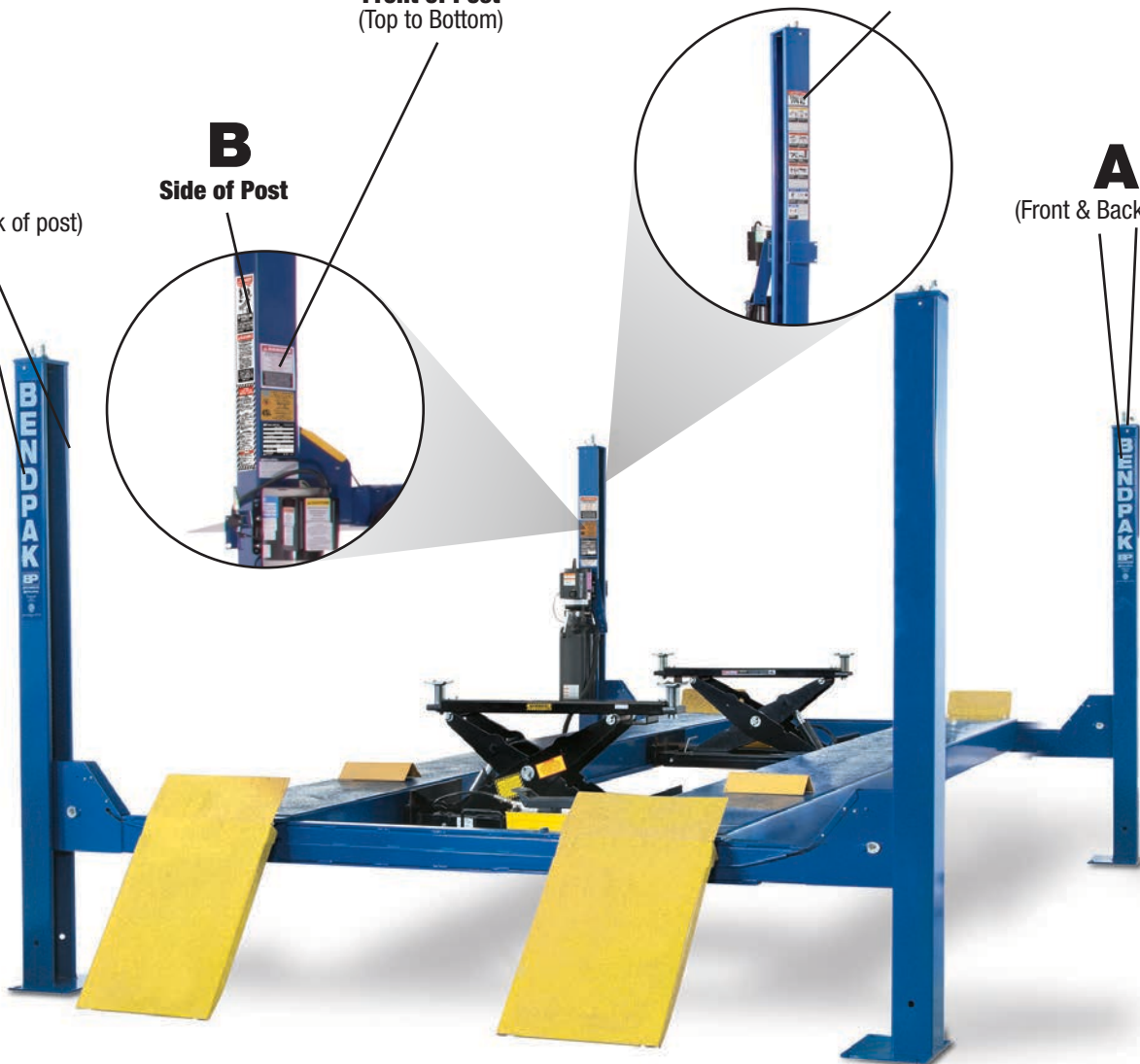
Side of Post

A

(Front & Back of post)

A

(Front & Back of post)



4 Post Lifts Packaging

BP BendPak. Santa Paula, CA USA www.bendpak.com	
MODEL NUMBER	SERIAL NUMBER
PN 5905285	

Serial_Tag_New-2015_Peel_Off-5905285.jpg:

Size: 3"W x 3"H

Material: 2 Mil. Matte Silver Polyester (Flex-PSE)

Print using thermal transfer printer with resin ribbon

Ink: 1 Color-Black

PEEL OFF INVENTORY LABEL	
MODEL NUMBER	SERIAL NUMBER
PN 5905285	

Do not remove back sheet of this portion to prevent from sticking completely as shown in image.



MFD. BY BENDPAK INC.

LIFT TYPE: SURFACE MOUNT CAPACITY: MED/HVY DTY

POWER: ELECTRIC/HYDRAULIC ANCHORS: AS EQUIPPED

INSTALLATION - SEE OWNERS GUIDE OR CONTACT FACTORY

SHIPPING DAMAGE CLAIMS
WHEN THIS EQUIPMENT IS SHIPPED, TITLE PASSES TO THE PURCHASER UPON RECEIPT FROM THE CARRIER. CONSEQUENTLY, CLAIMS FOR THE MATERIAL DAMAGED IN SHIPMENT MUST BE MADE BY THE PURCHASER AGAINST THE TRANSPORTATION COMPANY AT THE TIME SHIPMENT IS RECEIVED.

PLEASE READ ALL OPERATORS/USERS MANUAL(S) PRIOR TO INSTALLATION AND OPERATION. UNDERSTAND AND COMPREHEND THE FULL CONTENTS OF EACH MANUAL(S) PRIOR TO INSTALLATION AND OPERATION. DELIVER THE MANUAL(S) TO ALL OPERATORS. FAILURE TO OPERATE THIS EQUIPMENT AS DIRECTED MAY CAUSE INJURY OR DEATH.

IMPORTANT NOTE:
BENDPAK LIFTS ARE SUPPLIED WITH CONCRETE FASTENERS MEETING THE CRITERIA AS PRESCRIBED BY ASTM E488 - 96(2003). LIFT BUYERS ARE RESPONSIBLE FOR ANY SPECIAL REGIONAL STRUCTURAL AND/OR SEISMIC ANCHORING REQUIREMENTS SPECIFIED BY ANY OTHER AGENCIES AND/OR CODES SUCH AS THE UNIFORM BUILDING CODE (UBC) AND/OR INTERNATIONAL BUILDING CODE (IBC).



INTERNAL BAR CODE - FOR FACTORY AUDIT ONLY 34086

BPK | STYOT | P20KVR | X18576 | HVY DTY/ GVR

THE MANUFACTURE, USE, SALE OR IMPORT OF THIS PRODUCT MAY BE SUBJECT TO ONE OR MORE UNITED STATES PATENTS, OR PENDING APPLICATIONS, OWNED BY BENDPAK, INC.

ENGINEERED BY BENDPAK INC USA

MADE IN CHINA

Manufacturer Packaging Label:

Size: 5"W x 5"H

Material: White adhesive paper

Ink: U.V. protected CMYK 2/C Process

Print Process: Offset Lithography - 200 line-screen or 300 p.p.i. for digital