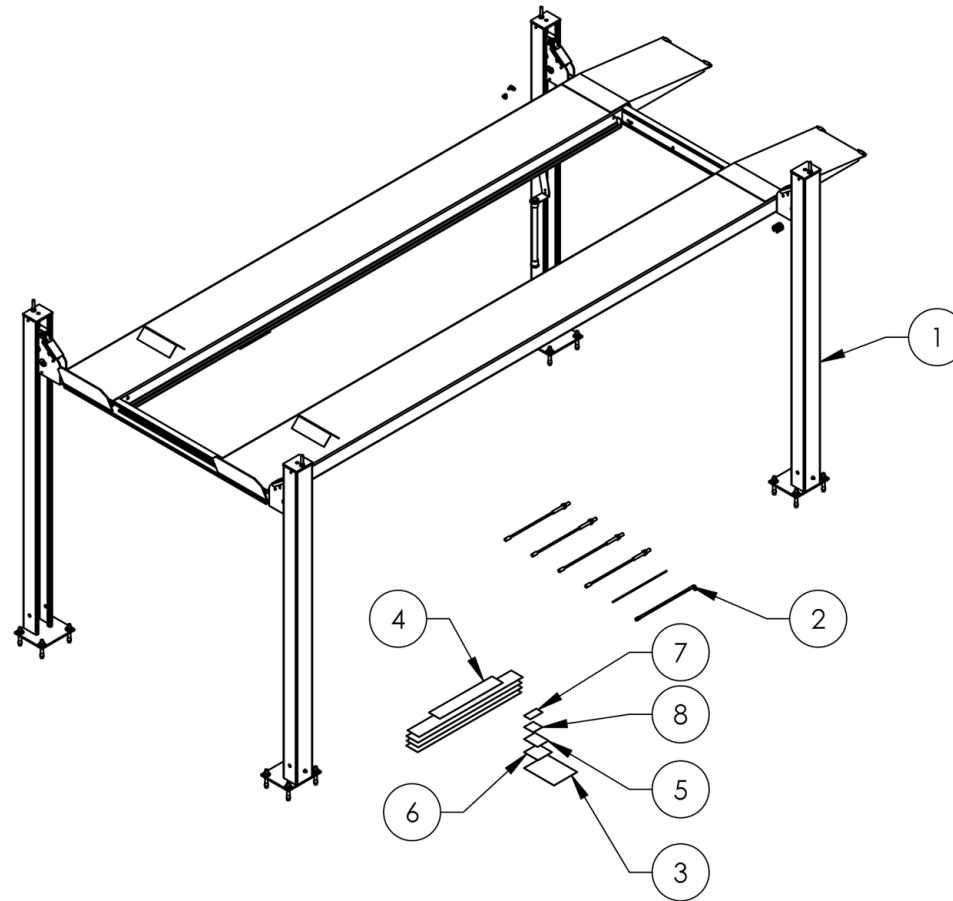


Service Manual

Service Parts & Diagrams

HD-9STX

BendPak SKU 5260028
HD-9STX Four-Post Car Lift
Version K
06/03/2016



This guide is a troubleshooting reference used for maintaining and servicing your BendPak product. It provides comprehensive information on identifying serviceable parts and components and assists in troubleshooting problems and performing assembly/disassembly procedures.



BendPak, Inc. Corporate Office

1645 Lemonwood Drive
Santa Paula, CA 93060 USA
Toll Free US/Canada: 1-800-253-2363
Fax: 1-805-933-9160
info@bendpak.com

Customer Service Desk / Warranty

Customer Service Representatives
Office Tel: 1-805-933-9970
Toll Free US/Canada: 1-800-253-2363
Fax: 1-805-933-9160
customerservice@bendpak.com

Parts Orders

Customer Service Representatives
Office Tel: 1-805-933-9970
Toll Free US/Canada: 1-800-253-2363
Fax: 1-805-933-9160
parts@bendpak.com

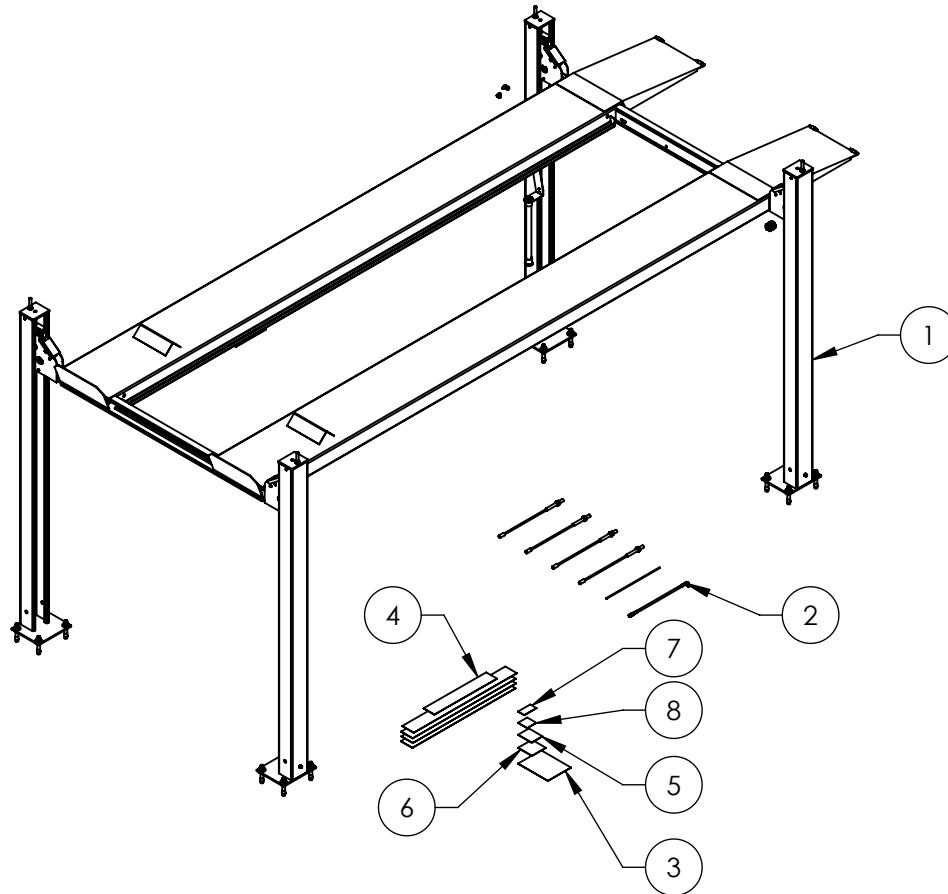
Domestic Sales & Service

USA Sales Representatives
Office Tel: 1-805-933-9970
Toll Free US/Canada: 1-800-253-2363
Fax: 1-805-933-9160
sales@bendpak.com

International Sales & Service

Office Tel: 1-805-933-9970
Exports Department: 1-805-933-9970 Ext. 192
Toll Free US/Canada: 1-800-253-2363
Fax: 1-805-933-9160
bpkexports@bendpak.com


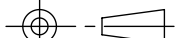
| REVISION | | | | |
|----------|---|------------|-----------|-------|
| REV | DESCRIPTION | DATE | EDITED BY | ECO# |
| C | ADDED 5905103, 5905200, 5905402, 5905465, 5905940, AND 5930605. UPDATED BOM REVISIONS | 08/14/2015 | TM | 00683 |
| D | REMOVED 5930605, ADDED 5905952 UPDATED BOM REVISIONS | 12/2/2015 | JM | 00740 |
| E | REPLACED 5905952 WITH 5905953 UPDATED BOM REVISIONS | 12/30/2015 | JM | 00741 |

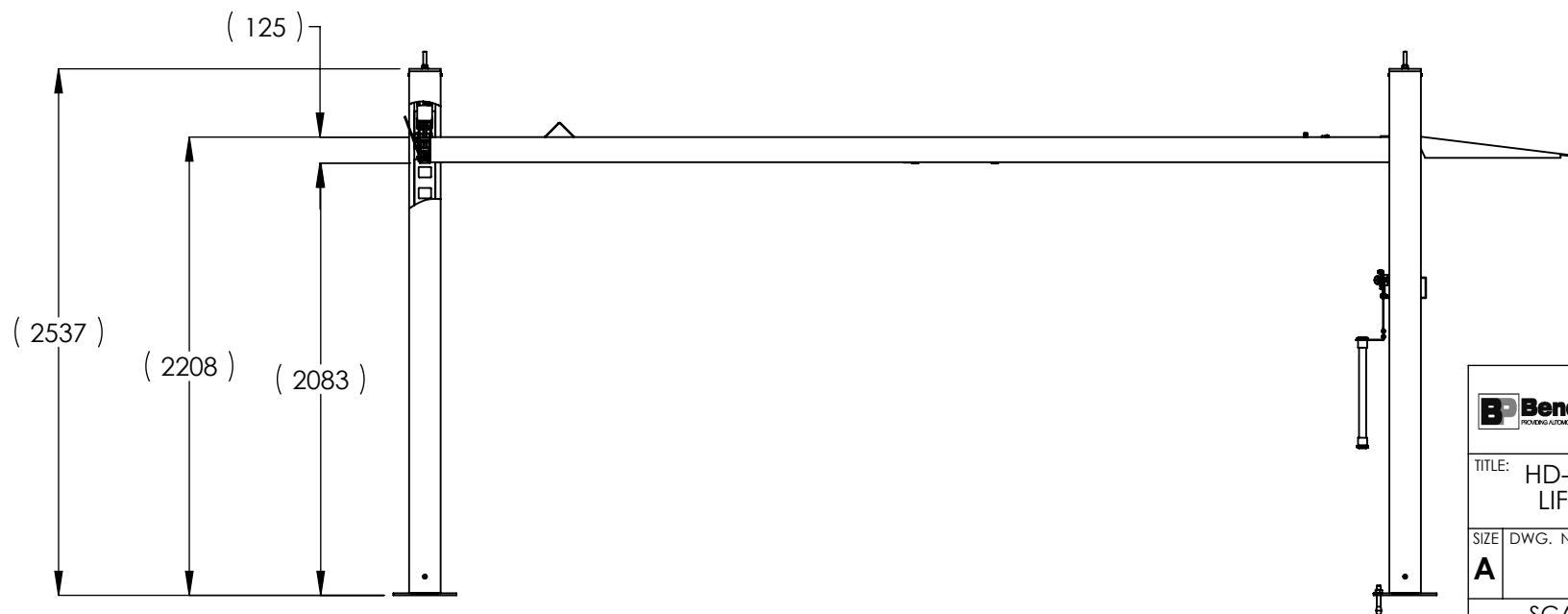
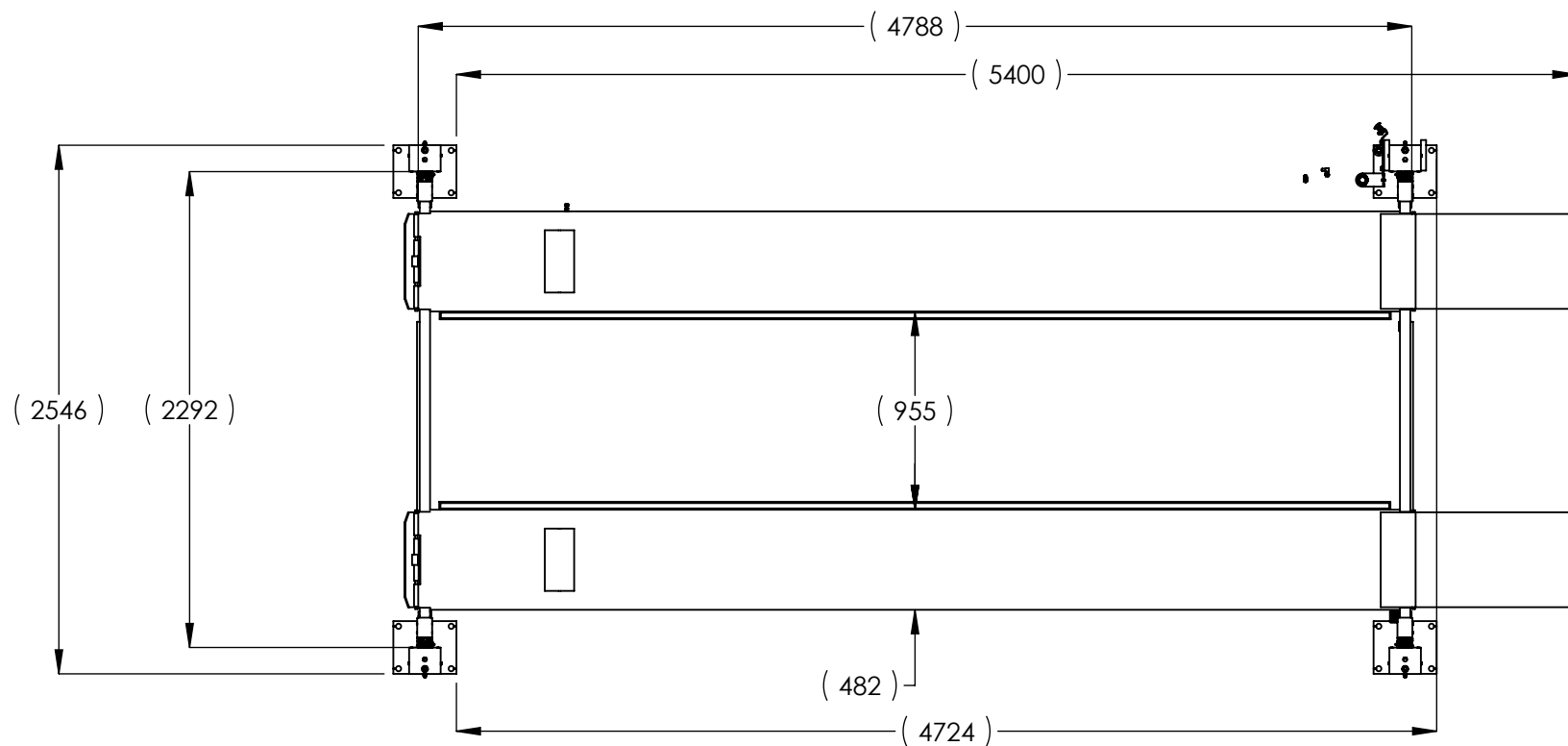


NOTE: UNLESS OTHERWISE SPECIFIED.

1. SEE SHIPPING INSTRUCTIONS FOR FINAL PACKAGING
2. ALL LABELS TO BE APPLIED TO POSTS AFTER PAINTING.
3. SEE ATTACHED LABEL PLACEMENT SHEET

| ITEM NO. | PART NUMBER | DESCRIPTION | QTY. | REV |
|----------|-------------|----------------------------------|------|-----|
| 1 | 5245392 | HD-9STX LIFT SUPERSTRUCTURE | 1 | E |
| 2 | 5250189 | PARTS BOX HD-9STX | 1 | E |
| 3 | 5905103 | WARNING ALI/WL 200 | 1 | -- |
| 4 | 5905200 | 4 POST DECAL KIT, LESS ALI | 1 | B |
| 5 | 5905402 | MAX CAP DANGER | 1 | -- |
| 6 | 5905465 | MANUFACTURER LABEL | 1 | -- |
| 7 | 5905940 | PRODUCT DATA LABEL | 1 | -- |
| 8 | 5905953 | SERIAL NUMBER INTERIOR TAG PLATE | 1 | -- |

| | | | | | | | | | | | |
|---|--|--|--|------|--|---|--|---|--|-----|--|
| DO NOT SCALE DRAWING | | NAME | | DATE | | BendPak. 1645 LEMONWOOD DR. MOVING AUTOMATIC SERVICE SOURCES SANTA PAULA, CA 93060 | | | | | |
| DIMENSIONS ARE IN MM | | DRAWN | | TM | | 08/12/2014 | | | | | |
| | | CHECKED | | - | | - | | | | | |
| | | THIRD ANGLE PROJECTION | | | | | | TITLE: HD-9STX PRODUCTION LIFT VER K (CE CERT) | | | |
|  | |  | | | | | | SIZE DWG. NO. | | REV | |
| | | <p>PROPRIETARY AND CONFIDENTIAL</p> <p>THE INFORMATION CONTAINED IN THIS DRAWING IS THE SOLE PROPERTY OF BENDPAK INC. ANY REPRODUCTION IN PART OR AS A WHOLE WITHOUT THE WRITTEN PERMISSION OF BENDPAK INC. IS PROHIBITED.</p> | | | | | | A 5260528 | | E | |
| | | | | | | | | SCALE: 1:50 | | | |



BendPak 1645 LEMONWOOD DR.
SANTA PAULA, CA 93060

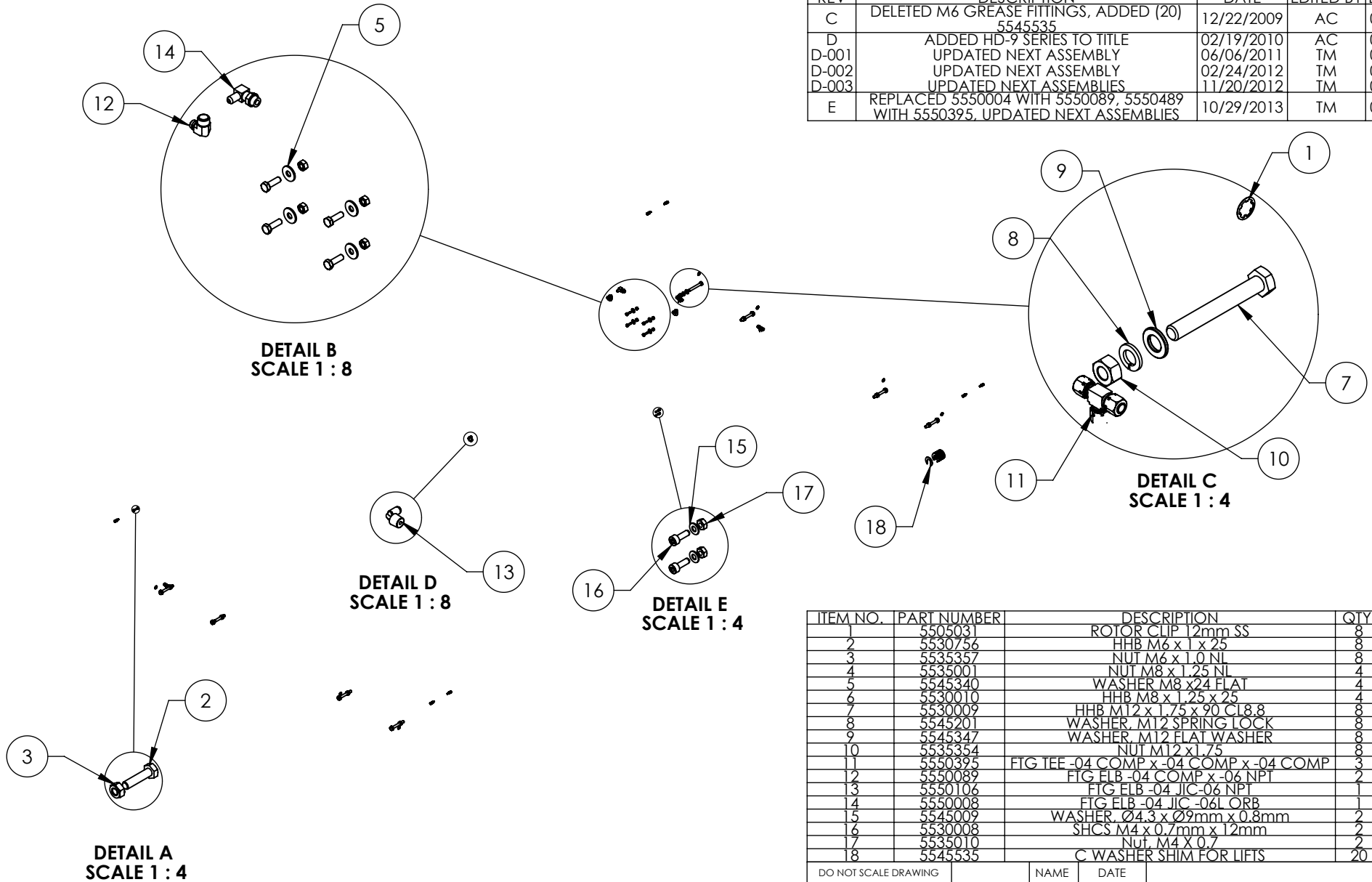
TITLE: HD-9STX PRODUCTION
LIFT VER K (CE CERT)

| | | |
|----------|----------|-----|
| SIZE | DWG. NO. | REV |
| A | 5260528 | E |

SCALE: 1:35

SHEET 2 OF 2

| REVISION | | | | |
|----------|--|------------|-----------|-------|
| REV | DESCRIPTION | DATE | EDITED BY | ECO# |
| C | DELETED M6 GREASE FITTINGS, ADDED (20) 5545535 | 12/22/2009 | AC | 00326 |
| D | ADDED HD-9 SERIES TO TITLE | 02/19/2010 | AC | 00333 |
| D-001 | UPDATED NEXT ASSEMBLY | 06/06/2011 | TM | 00464 |
| D-002 | UPDATED NEXT ASSEMBLY | 02/24/2012 | TM | 00501 |
| D-003 | UPDATED NEXT ASSEMBLIES | 11/20/2012 | TM | 00562 |
| E | REPLACED 5550004 WITH 5550089, 5550489 WITH 5550395, UPDATED NEXT ASSEMBLIES | 10/29/2013 | TM | 00593 |



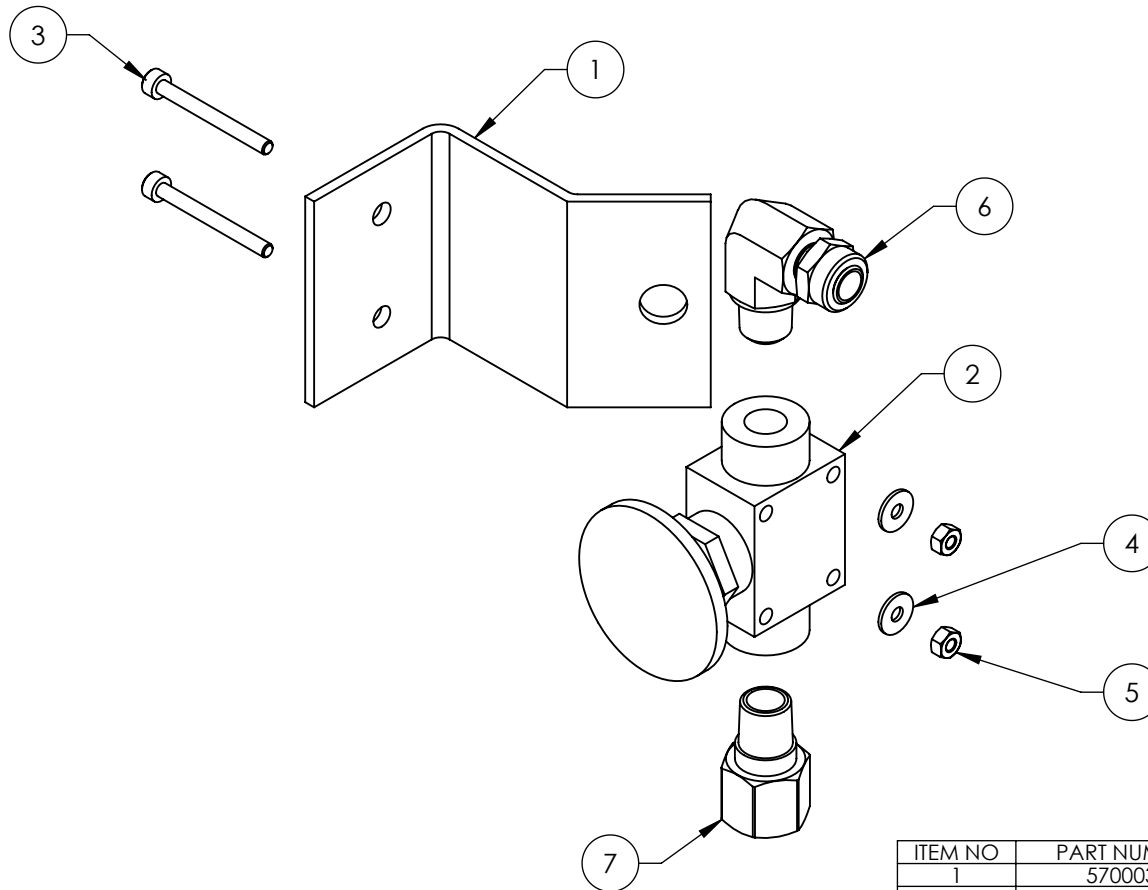
| ITEM NO. | PART NUMBER | DESCRIPTION | QTY. | REV |
|----------|-------------|--|------|-----|
| 1 | 5505031 | ROTOR CLIP 12mm SS | 8 | - |
| 2 | 5530756 | HHB M6 x 1 x 25 | 8 | - |
| 3 | 5535357 | NUT M6 x 1.0 NL | 8 | - |
| 4 | 5535001 | NUT M8 x 1.25 NL | 4 | A |
| 5 | 5545340 | WASHER M8 x24 FLAT | 4 | - |
| 6 | 5530010 | HHB M8 x 1.25 x 25 | 4 | B |
| 7 | 5530009 | HHB M12 x 1.75 x 90 CL8.8 | 8 | - |
| 8 | 5545201 | WASHER M12 SPRING LOCK | 8 | - |
| 9 | 5545347 | WASHER M12 FLAT WASHER | 8 | - |
| 10 | 5535354 | NUT M12 x 1.75 | 8 | - |
| 11 | 5550395 | FTG TEE -04 COMP x -04 COMP x -04 COMP | 3 | - |
| 12 | 5550089 | FTG ELB -04 COMP x -06 NPT | 2 | - |
| 13 | 5550106 | FTG ELB -04 JIC-06 NPT | 1 | - |
| 14 | 5550008 | FTG ELB -04 JIC-06L ORB | 1 | - |
| 15 | 5545009 | WASHER Ø4.3 x Ø9mm x 0.8mm | 2 | - |
| 16 | 5530008 | SHCS M4 x 0.7mm x 12mm | 2 | - |
| 17 | 5535010 | Nut M4 x 0.7 | 2 | - |
| 18 | 5545535 | C WASHER SHIM FOR LIFTS | 20 | - |

| | | | |
|--|--|--|-----------------|
| DO NOT SCALE DRAWING | | NAME | DATE |
| DIMENSIONS ARE IN MM | | DRAWN | AC 08/08/2008 |
| | | CHECKED | |
| | | THIRD ANGLE PROJECTION | |
| MATERIAL: --- | | | |
| SIZE: --- | | PROPRIETARY AND CONFIDENTIAL THE INFORMATION CONTAINED IN THIS DRAWING IS THE SOLE PROPERTY OF BENDPAK INC. ANY REPRODUCTION IN PART OR AS A WHOLE WITHOUT THE WRITTEN PERMISSION OF BENDPAK INC. IS PROHIBITED. | |
| NEXT ASSEMBLY 5250164 5250167 5250168 5250169 5250184 5250185 5250187 5250188 5250189 | | TITLE: HD-7/9 SERIES PARTS BAG | |
| | | SIZE DWG. NO. A 5174092 | REV E |
| | | SCALE: 1:30 | |
| | | SHEET 1 OF 1 | |



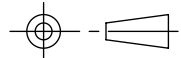
NOTE: UNLESS OTHERWISE SPECIFIED.

1. SEE SHIPPING INSTRUCTIONS FOR FINAL PACKAGING

| REVISION | | | | |
|----------|--|------------|-----------|-------|
| REV | DESCRIPTION | DATE | EDITED BY | ECO# |
| D | UPDATED NEXT ASSEMBLY, ADDED 5550486 | 02/24/2010 | AC | 00333 |
| D-001 | UPDATED NEXT ASSEMBLY | 01/21/2011 | TM | 00439 |
| D-010 | UPDATED NEXT ASSEMBLIES | 07/24/2013 | TM | 00611 |
| E | REPLACED 5550481 WITH 5550087 | 10/29/2013 | TM | 00593 |
| F | REPLACED 5590240 WITH 5590175, UPDATED NEXT ASSEMBLIES | 05/05/2015 | MR | 00683 |



| ITEM NO | PART NUMBER | DESCRIPTION | QTY | REV |
|---------|-------------|-----------------------------|-----|-----|
| 1 | 5700031 | ZERO ANGLE MTG BRACKET | 1 | C |
| 2 | 5590175 | PUSH BUTTON AIR VALVE | 1 | B |
| 3 | 5530043 | SHCS M3 x 0.5 x 30 | 2 | - |
| 4 | 5545024 | WASHER M3 x 9mm | 2 | - |
| 5 | 5535020 | NUT M3 x 0.5 NL | 2 | - |
| 6 | 5550087 | FTG ELB -04 COMP x -02 NPT | 1 | - |
| 7 | 5550486 | FTG NPL -02 NPT x -04 F NPT | 1 | - |

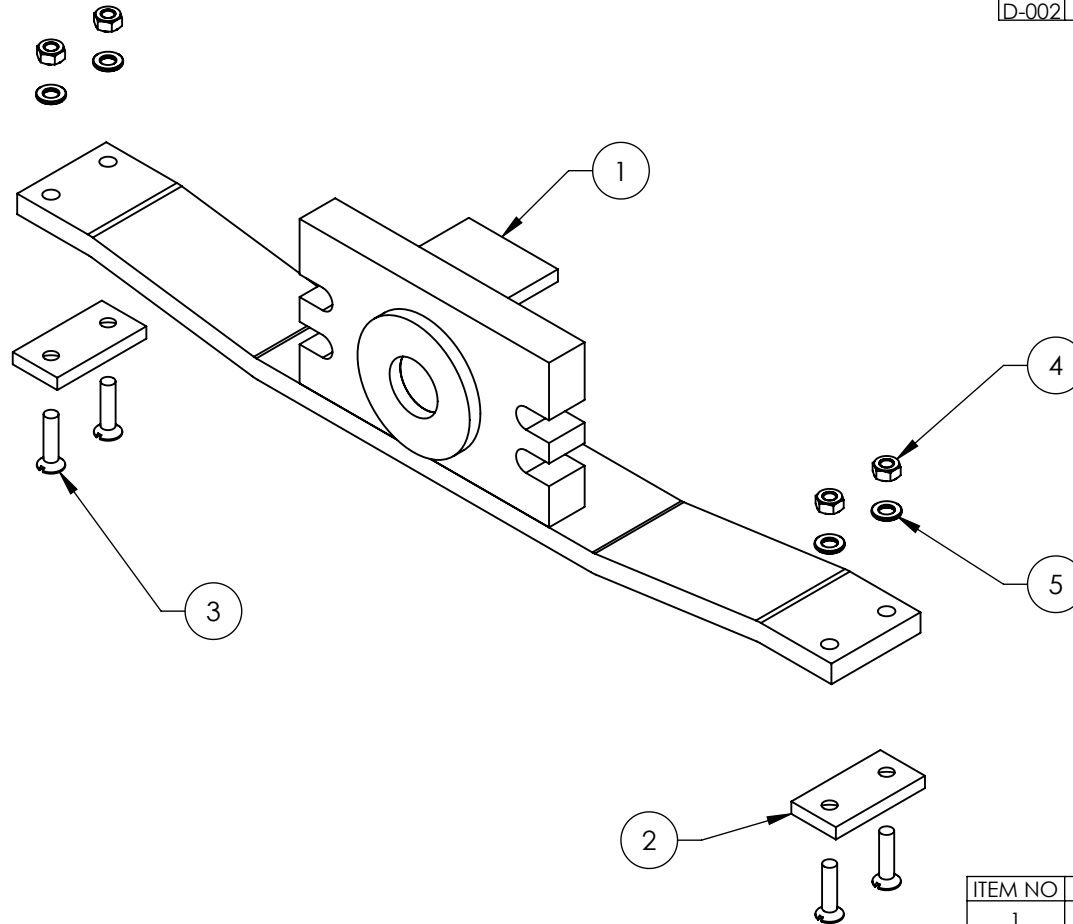
| | | | | |
|---|--|---|------|---|
| DO NOT SCALE DRAWING | | NAME | DATE |  BendPak. 1645 LEMONWOOD DR. SANTA PAULA, CA 93060 |
| | | DRAWN | AC | |
| | | CHECKED | CA | |
| DIMENSIONS ARE IN MM  | | THIRD ANGLE PROJECTION | | TITLE: |
| | |  | | PUSH BUTTON AIR ASSEMBLY |
| | | <small>PROPRIETARY AND CONFIDENTIAL THE INFORMATION CONTAINED IN THIS DRAWING IS THE SOLE PROPERTY OF BENDPAK INC. ANY REPRODUCTION IN PART OR AS A WHOLE WITHOUT THE WRITTEN PERMISSION OF BENDPAK INC. IS PROHIBITED.</small> | | SIZE DWG. NO. |
| | | A | | 5215096 |
| | | | | REV |
| | | | | F |
| | | SCALE: 2:3 | | SHEET 1 OF 1 |

NOTE: UNLESS OTHERWISE SPECIFIED.



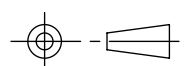
1. ASSEMBLE ITEMS AS SHOWN

| |
|---------------|
| NEXT ASSEMBLY |
| HD/HDS/HDSO |
| SERIES |
| 5250118 |
| 5250249 |
| 5250364 |

| REVISION | | | | |
|----------|--|------------|-----------|-------|
| REV | DESCRIPTION | DATE | EDITED BY | ECO# |
| B | UPDATED BOM REVISIONS, UPDATED NEXT ASSEMBLY | 11/14/2008 | AC | 00174 |
| C | UPDATED BOM REVISION | 04/22/2010 | TM | 00351 |
| D | UPDATED TITLE TO REFLECT WHERE USED, UPDATED BOM REVISIONS | 06/10/2010 | AC | 00366 |
| D-001 | UPDATED NEXT ASSEMBLY | 01/20/2011 | TM | 00439 |
| D-002 | UPDATED NEXT ASSEMBLY | 06/06/2011 | TM | 00464 |



| ITEM NO | PART NUMBER | DESCRIPTION | QTY | REV |
|---------|-------------|---|-----|-----|
| 1 | 5600901 | HD-7500/9 SERIES CYLINDER FLANGE ARM WELDMENT | 1 | D |
| 2 | 5715090 | CYL. FLANGE ARM SLIDE | 2 | A |
| 3 | 5530069 | FHS M6 x 1.0 x 25 | 4 | - |
| 4 | 5535357 | NUT M6 x 1.0 NL | 4 | - |
| 5 | 5545005 | M6 FLAT WASHER | 4 | - |

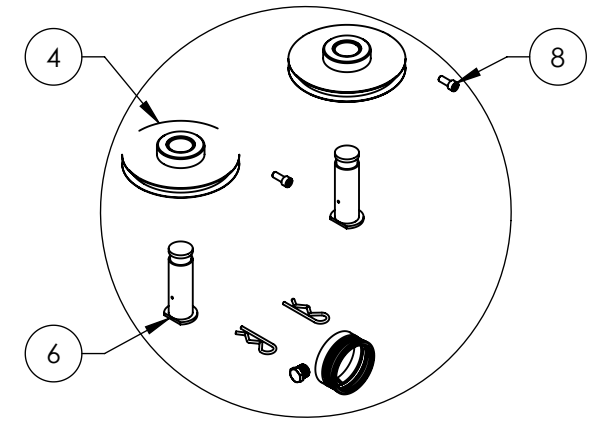
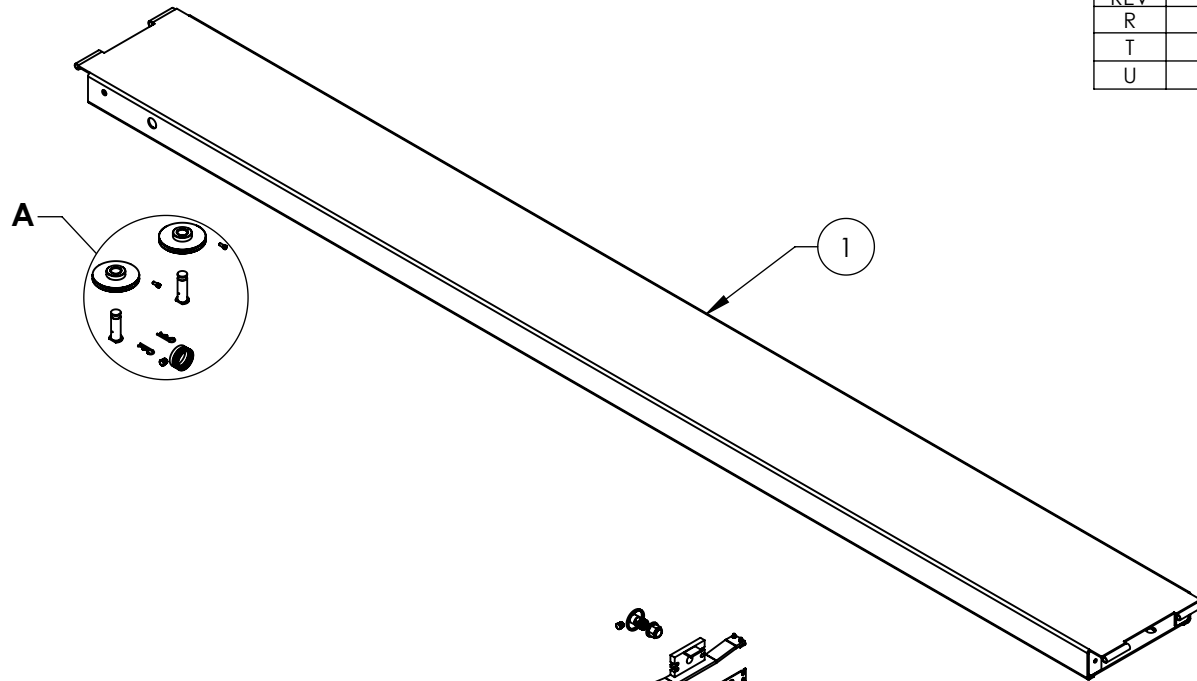
| | | | | | |
|---|--|---|------|--|--|
| DO NOT SCALE DRAWING | | NAME | DATE |  BendPak. 1645 LEMONWOOD DR. MOVING AUTOMATIC SERVICE SOURCES SANTA PAULA, CA 93060 | |
| DIMENSIONS ARE IN MM | | DRAWN | AC | 08/21/2008 | |
|  | | CHECKED | MT | 07/06/2011 | |
| | | THIRD ANGLE PROJECTION | | | |
|  | | TITLE: HD-7500/9 CYLINDER FLANGE ARM ASSEMBLY | | | |
| | | SIZE DWG. NO. | | REV | |
| MATERIAL: --- | | A | | 5215129 | |
| SIZE: --- | | | | D | |
| SCALE: 1:3 | | | | SHEET 1 OF 1 | |

| NEXT ASSEMBLY | |
|---------------|---------------|
| 5215190 | MATERIAL: --- |
| 5215191 | SIZE: --- |
| 5215192 | |
| 5215198 | |
| 5215512 | |
| 5215525 | |

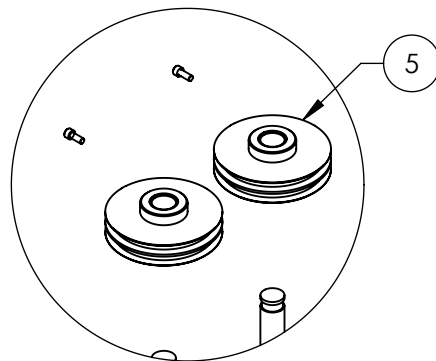
NOTE: UNLESS OTHERWISE SPECIFIED.

1. ASSEMBLE ITEMS AS SHOWN

| REVISION | | | | |
|----------|-----------------------------------|------------|-----------|-------|
| REV | DESCRIPTION | DATE | EDITED BY | ECO# |
| R | REMOVED 5535026, 5505350, 5545031 | 01/14/2015 | MR | 00675 |
| T | UPDATED BOM REVISION | 04/28/2015 | MR | 00683 |
| U | REMOVED (4) 5550025 | 11/25/2015 | JM | 00740 |



**DETAIL A
SCALE 1 : 10**



**DETAIL B
SCALE 1 : 10**

NOTE: UNLESS OTHERWISE SPECIFIED.

- SEE SHIPPING INSTRUCTIONS FOR FINAL PACKAGING
- ASSEMBLE ITEMS AS SHOWN

| ITEM NO | PART NUMBER | DESCRIPTION | QTY | REV |
|---------|-------------|---|-----|-----|
| 1 | 5600192 | HD-7500BLX/9STX/ 9SWX/9XL/9XW POWER SIDE WELDMENT | 1 | J |
| 2 | 5502166 | CYLINDER ASSEMBLY Ø3.0 x 82 | 1 | G |
| 3 | 5731309 | CABLE RETAINER PLATE | 1 | A |
| 4 | 5215122 | HD-7/7500/9 SERIES SINGLE SHEAVE ROLLER ASSEMBLY | 2 | D |
| 5 | 5215123 | HD-7/7500/9 SERIES TWIN SHEAVE ASSEMBLY | 2 | D |
| 6 | 5600900 | HD-7/7500/9 SERIES RAMP SHEAVE SHAFT WELDMENT | 4 | D |
| 7 | 5215129 | HD-7500/9 CYLINDER FLANGE ARM ASSEMBLY | 1 | D |
| 8 | 5530773 | SHCS M8x1.25x20mm L | 4 | - |

DO NOT SCALE DRAWING

| NAME | DATE |
|------------|------------|
| DRAWN AC | 10/15/2008 |
| CHECKED CA | 09/01/2015 |

BendPak 1645 LEMONWOOD DR.
SANTA PAULA, CA 93060

DIMENSIONS ARE IN MM



THIRD ANGLE PROJECTION

PROPRIETARY AND CONFIDENTIAL
THE INFORMATION CONTAINED IN THIS DRAWING IS
THE SOLE PROPERTY OF BENDPAK INC. ANY
REPRODUCTION IN PART OR AS A WHOLE WITHOUT
THE WRITTEN PERMISSION OF BENDPAK INC. IS
PROHIBITED.

TITLE:
HD-7500BLX/9STX/9SWX/9XW
POWER SIDE RAMP ASSEMBLY

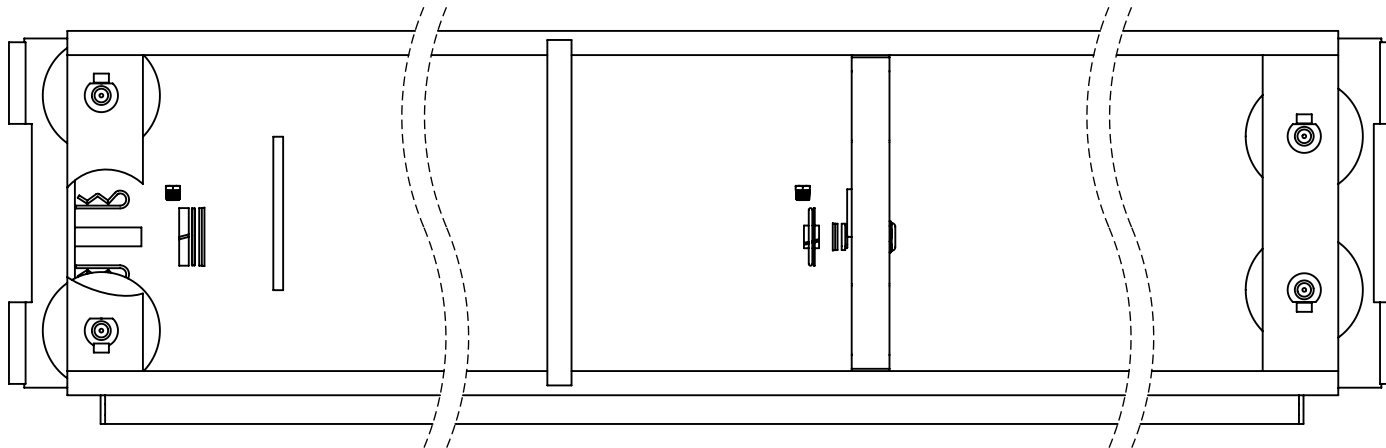
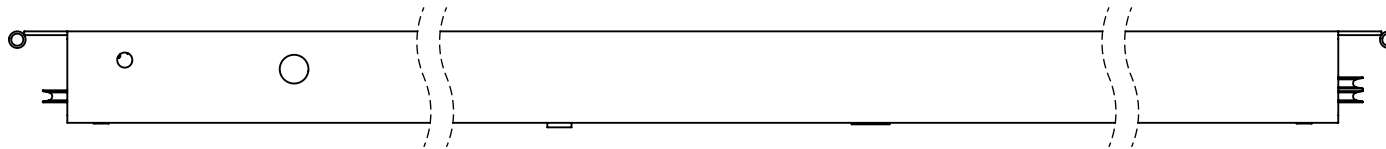
SIZE DWG. NO. REV


A 5215192 U

SCALE: 1:25

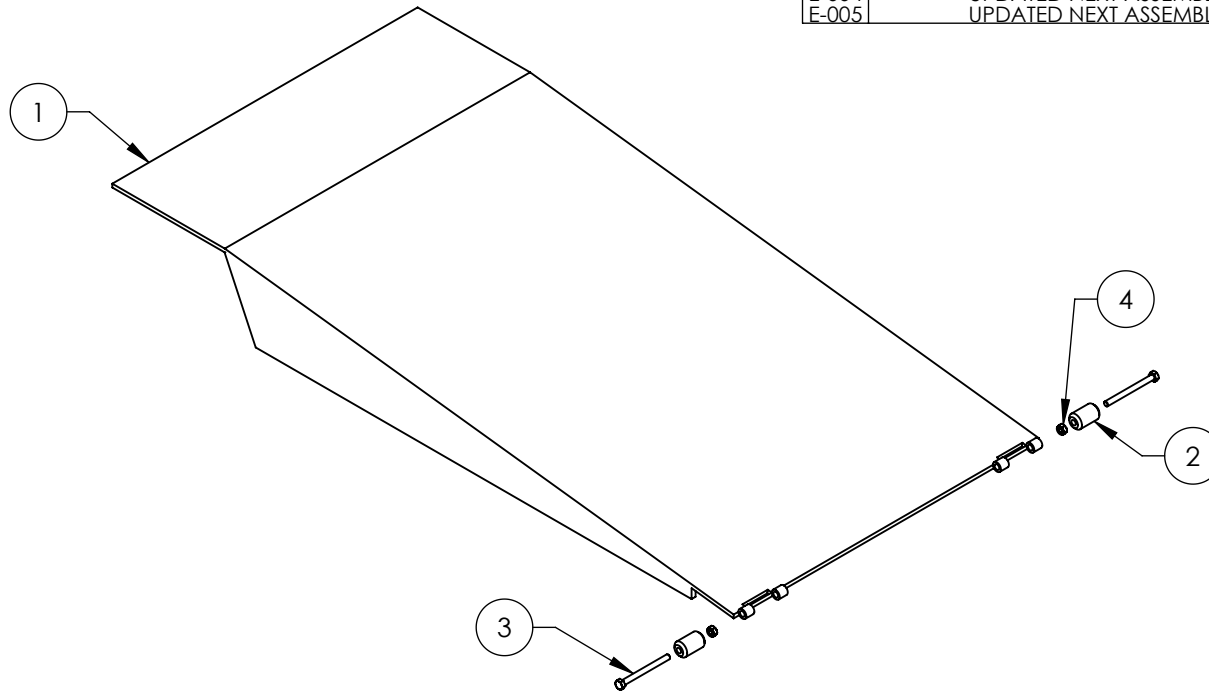
SHEET 1 OF 2

| NEXT ASSEMBLY |
|---------------|
| 5245381 |
| 5245389 |
| 5245392 |
| 5245393 |



| | | |
|---|----------|--------------|
|  BendPak 1645 LEMONWOOD DR. SANTA PAULA, CA 93060 <small>HYDRAULIC RAMP SOLUTIONS</small> | | |
| TITLE: HD-7500BLX/9STX/9SWX/9XW POWER SIDE RAMP ASSEMBLY | | |
| SIZE | DWG. NO. | REV |
| A | 5215192 | U |
| SCALE: 1:10 | | SHEET 2 OF 2 |

| REVISION | | | | |
|----------|---|------------|-----------|-------|
| REV | DESCRIPTION | DATE | EDITED BY | ECO# |
| C | UPDATED TITLE TO REFLECT WHERE USED UPDATED NEXT ASSEMBLY | 02/25/2010 | AC | 00333 |
| D | UPDATED TITLE TO REFLECT WHERE USED UPDATED BOM REVISIONS REPLACED 5535112 WITH 5535357 | 06/10/2010 | AC | 00366 |
| D-001 | UPDATED NEXT ASSEMBLY | 06/06/2011 | TM | 00464 |
| D-002 | UPDATED NEXT ASSEMBLY | 10/27/2011 | TM | 00487 |
| E | UPDATED BOM REVISION | 08/22/2012 | TM | 00541 |
| E-001 | UPDATED NEXT ASSEMBLY | 11/19/2012 | TM | 00562 |
| E-002 | UPDATED NEXT ASSEMBLY | 05/20/2013 | TM | 00593 |
| E-003 | UPDATED NEXT ASSEMBLY | 11/20/2013 | TM | 00626 |
| E-004 | UPDATED NEXT ASSEMBLY | 06/10/2014 | TM | 00648 |
| E-005 | UPDATED NEXT ASSEMBLY | 08/14/2014 | TM | 00664 |



| ITEM NO | PART NUMBER | DESCRIPTION | QTY | REV |
|---------|-------------|---|-----|-----|
| 1 | 5600891 | HD-7500BL/7500BLX/ 9/9N/9NX/9ST/9STX/9XW DRIVE UP RAMP WELDMENT | 1 | D |
| 2 | 5716149 | HD-7500/9, HD/S-14 SERIES DRIVE UP RAMP PLASTIC ROLLER | 2 | F |
| 3 | 5530005 | HHB M6 x 1 x 70 | 2 | - |
| 4 | 5535357 | NUT M6 x 1.0 NL | 2 | - |

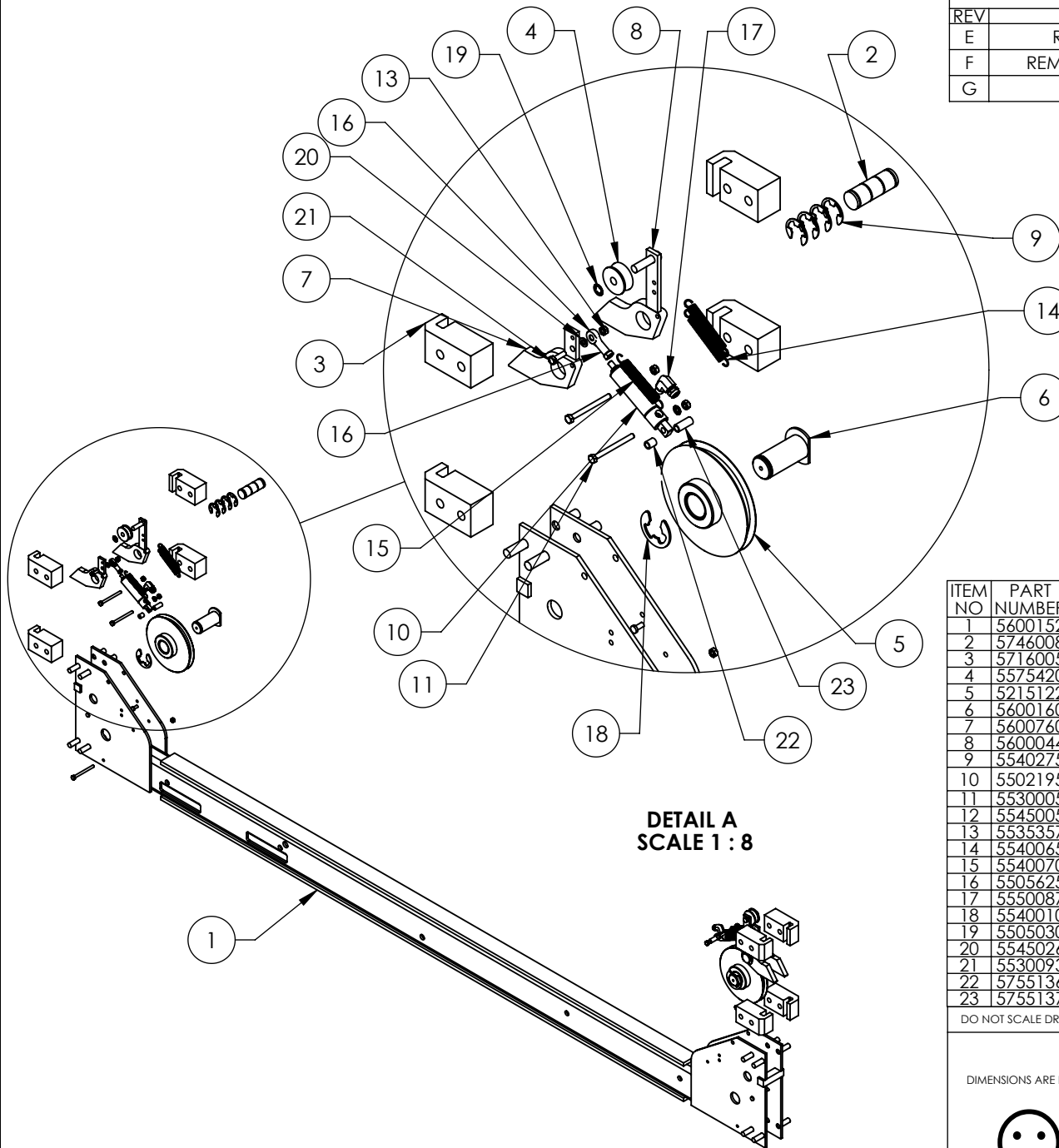
| NEXT ASSEMBLY |
|---------------|
| 5245275 |
| 5245381 |
| 5245382 |
| 5245383 |
| 5245384 |
| 5245385 |
| 5245386 |
| 5245388 |
| 5245391 |
| 5245392 |
| 5245393 |
| 5245395 |
| 5245396 |

| | | | | |
|----------------------|--|---|---------------|--|
| DO NOT SCALE DRAWING | | NAME | DATE | BendPak. 1645 LEMONWOOD DR. SANTA PAULA, CA 93060 |
| DIMENSIONS ARE IN MM | | DRAWN | AC 11/13/2008 | |
| | | CHECKED | | TITLE: HD-7500BL/BLX, 9/ST/STX/XW DRIVE UP RAMP ASSEMBLY SIZE DWG. NO. REV |
| | | THIRD ANGLE PROJECTION | | |
| | | <small>PROPRIETARY AND CONFIDENTIAL THE INFORMATION CONTAINED IN THIS DRAWING IS THE SOLE PROPERTY OF BENDPAK INC. ANY REPRODUCTION IN PART OR AS A WHOLE WITHOUT THE WRITTEN PERMISSION OF BENDPAK INC. IS PROHIBITED.</small> | | A 5215193 F |
| SCALE: 1:8 | | | | SHEET 1 OF 1 |

NOTE: UNLESS OTHERWISE SPECIFIED.

- SEE SHIPPING INSTRUCTIONS FOR FINAL PACKAGING
- ASSEMBLE ITEMS AS SHOWN

| REVISION | | | | |
|----------|-------------------------------------|------------|-----------|-------|
| REV | DESCRIPTION | DATE | EDITED BY | ECO# |
| E | REPLACED 5545026 WITH 5545005 | 3/19/2015 | MR | 00683 |
| F | REMOVED (2) 5550025 AND (2) 5716630 | 11/25/2015 | JM | 00740 |
| G | UPDATED BOM REVISIONS | 12/30/2015 | JM | 00741 |



DETAIL A
SCALE 1 : 8

| ITEM NO | PART NUMBER | DESCRIPTION | QTY | REV |
|---------|-------------|--|-----|-----|
| 1 | 5600152 | HD-9ST/9STX SMALL WINDOW CROSSTUBE WELDMENT | 1 | N |
| 2 | 5746008 | HD/HDS-7/7500/9/14, HD50-14 SAFETY PIN | 2 | E |
| 3 | 5716005 | HD-7/7500/9/14/HD50-14 PLASTIC SLIDE BLOCK | 8 | J |
| 4 | 5575420 | HD-7/7500/9 SERIES SAFETY ROLLER | 2 | C |
| 5 | 5215122 | HD-7/7500/9 SERIES SINGLE SHEAVE ROLLER ASSEMBLY | 2 | D |
| 6 | 5600160 | HD-7/7500/9 SERIES CROSSTUBE SHEAVE SHAFT WELDMENT | 2 | E |
| 7 | 5600760 | HD/HDS LIGHT DUTY SERIES SAFETY WELDMENT | 2 | B |
| 8 | 5600044 | HD/HDS LIGHT DUTY SERIES SLACK SAFETY WELDMENT | 2 | F |
| 9 | 5540275 | E RING Ø25mm OD DIN 6799 0250 | 8 | - |
| 10 | 5502195 | AIR CYLINDER, Ø19mm x 25 STROKE | 2 | - |
| 11 | 5530005 | HHB M6 x 1 x 70 | 6 | - |
| 12 | 5545005 | M6 FLAT WASHER | 2 | - |
| 13 | 5535357 | NUT M6 x 1.0 NL | 8 | - |
| 14 | 5540065 | SPRING Ø13mm x 90mm, SLACK SAFETY | 4 | A |
| 15 | 5540070 | SPRING Ø13mm x 89mm, AIR CYLINDER | 2 | B |
| 16 | 5505625 | FEMALE ROD END M6 x 33mm | 2 | - |
| 17 | 5550087 | FTG ELB -04 COMP x -02 NPT | 2 | - |
| 18 | 5540010 | E RING Ø32mm OD DIN 6799 | 2 | - |
| 19 | 5505030 | ROTOR CLIP 10mm SS | 2 | - |
| 20 | 5545026 | WASHER M6 x Ø12 SL | 2 | A |
| 21 | 5530093 | HHB M6 x 1 x 20 | 2 | - |
| 22 | 5755136 | HD AIR CYLINDER SPACER 12mm | 2 | B |
| 23 | 5755137 | HD AIR CYLINDER SPACER 25mm | 2 | B |

DO NOT SCALE DRAWING

| NAME | DATE |
|------------|------------|
| DRAWN TM | 04/29/2013 |
| CHECKED CA | 09/01/2015 |

BendPak 1645 LEMONWOOD DR.
SANTA PAULA, CA 93060

DIMENSIONS ARE IN MM



THIRD ANGLE PROJECTION

PROPRIETARY AND CONFIDENTIAL
THE INFORMATION CONTAINED IN THIS DRAWING IS
THE SOLE PROPERTY OF BENDPAK INC. ANY
REPRODUCTION IN PART OR AS A WHOLE WITHOUT
THE WRITTEN PERMISSION OF BENDPAK INC. IS
PROHIBITED.

TITLE:
HD-9ST/STX CROSSTUBE
ASSEMBLY, SMALL WINDOW

| | |
|---------------|-----|
| SIZE DWG. NO. | REV |
| A 5215601 | G |

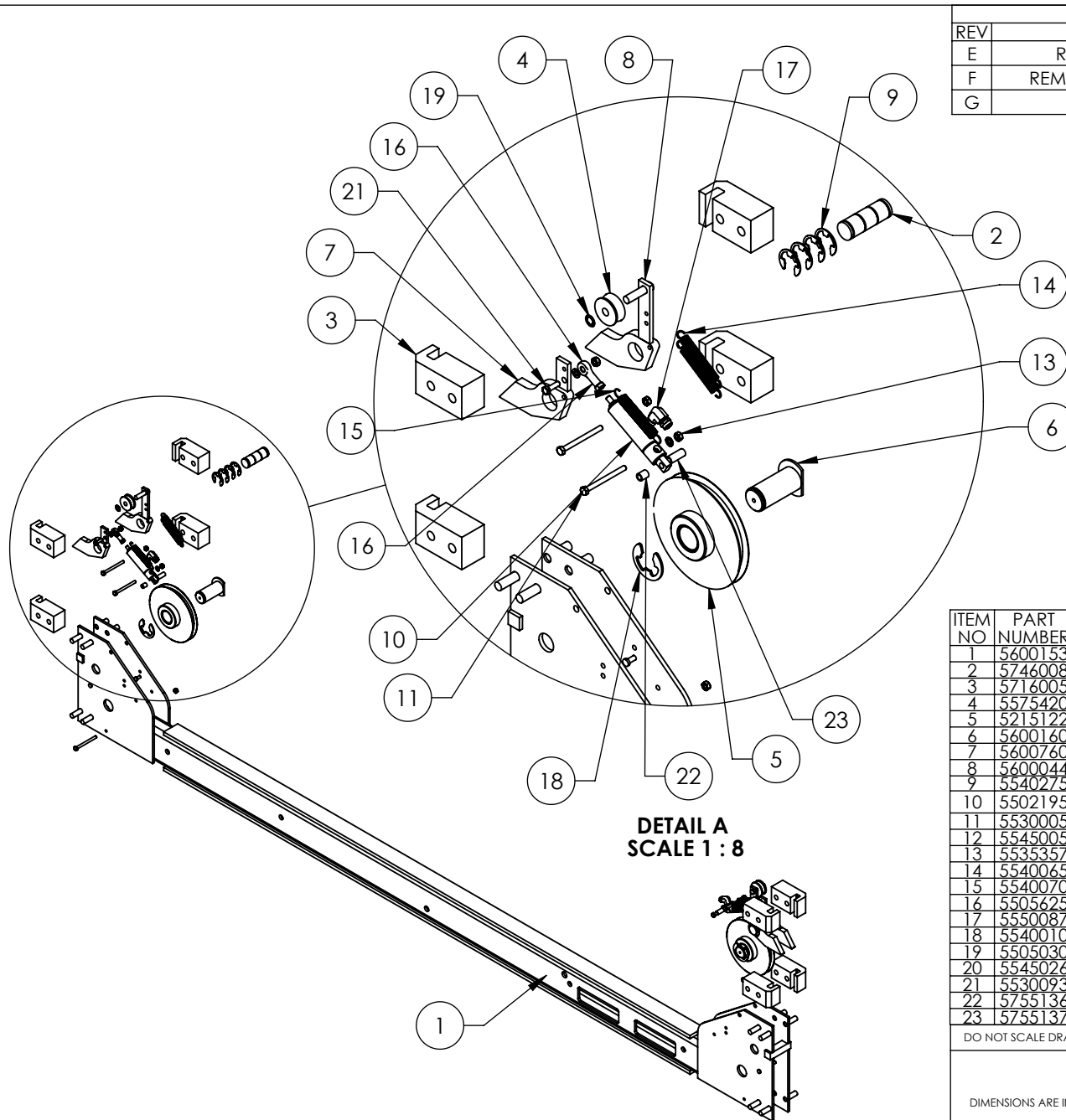
SCALE: 1:16

SHEET 1 OF 1

NOTE: UNLESS OTHERWISE SPECIFIED.

- SEE SHIPPING INSTRUCTIONS FOR FINAL PACKAGING
- ASSEMBLE ITEMS AS SHOWN

NEXT ASSEMBLY
5245392
5245395





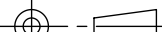
NOTE: UNLESS OTHERWISE SPECIFIED.

1. SEE SHIPPING INSTRUCTIONS FOR FINAL PACKAGING
2. ASSEMBLE ITEMS AS SHOWN

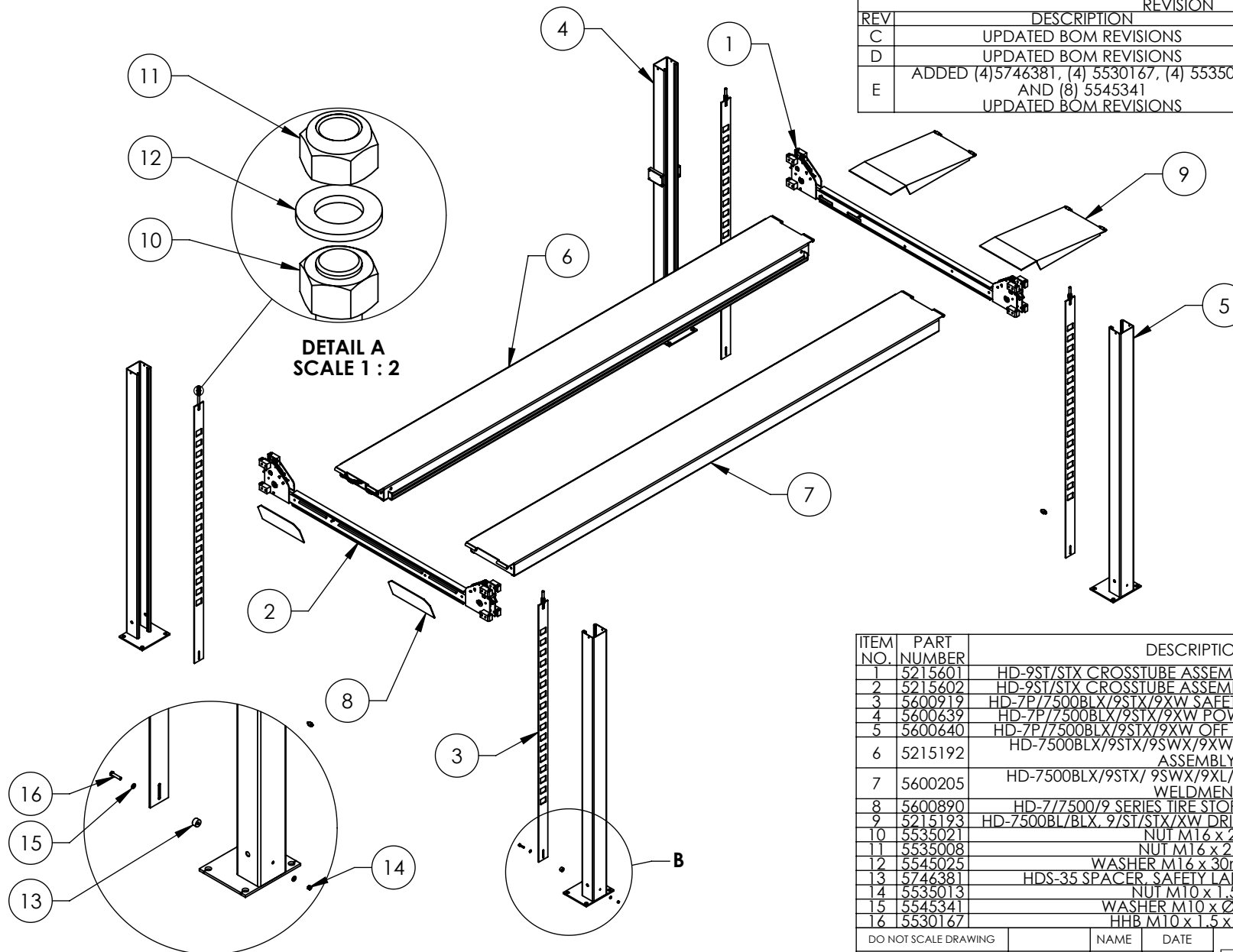
NEXT ASSEMBLY
5245392
5245395

| REVISION | | | | |
|----------|-------------------------------------|------------|-----------|-------|
| REV | DESCRIPTION | DATE | EDITED BY | ECO# |
| E | REPLACED 5545026 WITH 5545005 | 03/20/2015 | MR | 00683 |
| F | REMOVED (2) 5550025 AND (2) 5716630 | 11/25/2015 | JM | 00740 |
| G | UPDATED BOM REVISIONS | 12/30/2015 | JM | 00741 |

| ITEM NO | PART NUMBER | DESCRIPTION | QTY | REV |
|---------|-------------|--|-----|-----|
| 1 | 5600153 | HD-9ST/9STX LARGE WINDOW CROSSTUBE WELDMENT | 1 | N |
| 2 | 5746008 | HD/HDS-7/7500/9/14, HDSO-14 SAFETY PIN | 2 | E |
| 3 | 5716005 | HD-7/7500/9/14/HDSO-14 PLASTIC SLIDE BLOCK | 8 | J |
| 4 | 5575420 | HD-7/7500/9 SERIES SAFETY ROLLER | 2 | C |
| 5 | 5215122 | HD-7/7500/9 SERIES SINGLE SHEAVE ROLLER ASSEMBLY | 2 | D |
| 6 | 5600160 | HD-7/7500/9 SERIES CROSSTUBE SHEAVE SHAFT WELDMENT | 2 | E |
| 7 | 5600760 | HD/HDS LIGHT DUTY SERIES SAFETY WELDMENT | 2 | B |
| 8 | 5600044 | HD/HDS LIGHT DUTY SERIES SLACK SAFETY WELDMENT | 2 | F |
| 9 | 5540275 | E RING Ø25mm OD DIN 6799 0250 | 8 | - |
| 10 | 5502195 | AIR CYLINDER, Ø19mm x 25 STROKE | 2 | - |
| 11 | 5530005 | HHB M6 x 1 x 70 | 6 | - |
| 12 | 5545005 | M6 FLAT WASHER | 2 | - |
| 13 | 5535357 | NUT M6 x 1.0 NL | 8 | - |
| 14 | 5540065 | SPRING Ø13mm x 90mm, SLACK SAFETY | 4 | A |
| 15 | 5540070 | SPRING Ø13mm x 89mm, AIR CYLINDER | 2 | B |
| 16 | 5505625 | FEMALE ROD END M6 x 33mm | 2 | - |
| 17 | 5550087 | FTG ELB -04 COMP x -02 NPT | 2 | - |
| 18 | 5540010 | E RING Ø32mm OD DIN 6799 | 2 | - |
| 19 | 5505030 | ROTOR CLIP 10mm SS | 2 | - |
| 20 | 5545026 | WASHER M6 x Ø12 SL | 2 | A |
| 21 | 5530093 | HHB M6 x 1 x 20 | 2 | - |
| 22 | 5755136 | HD AIR CYLINDER SPACER 12mm | 2 | B |
| 23 | 5755137 | HD AIR CYLINDER SPACER 25mm | 2 | B |

| | | | | | | | |
|---|--|---|------|---|--|----------|--------------|
| DO NOT SCALE DRAWING | | NAME | DATE |  BendPak. 1645 LEMONWOOD DR. <small>WORKING WITH THE FORCE BUILT FOR YOU</small> SANTA PAULA, CA 93060 | | | |
| DIMENSIONS ARE IN MM  | | DRAWN | TM | 04/29/2013 | TITLE: HD-9ST/STX CROSSTUBE ASSEMBLY, LARGE WINDOW | | |
| | | CHECKED | CA | 09/01/2015 | | | |
| | | THIRD ANGLE PROJECTION  | | | | | |
| Y | | PROPRIETARY AND CONFIDENTIAL THE INFORMATION CONTAINED IN THIS DRAWING IS THE SOLE PROPERTY OF BENDPAK INC. ANY REPRODUCTION IN PART OR AS A WHOLE WITHOUT THE WRITTEN PERMISSION OF BENDPAK INC. IS PROHIBITED. | | | SIZE | DWG. NO. | REV |
| | | | | | A | 5215602 | G |
| | | | | | SCALE: 1:16 | | SHEET 1 OF 1 |

| | | REVISION | | |
|-----|---|------------|-----------|-------|
| REV | DESCRIPTION | DATE | EDITED BY | ECO# |
| C | UPDATED BOM REVISIONS | 03/20/2015 | MR | 00683 |
| D | UPDATED BOM REVISIONS | 12/2/2015 | JM | 00740 |
| E | ADDED (4) 5746381, (4) 5530167, (4) 5535013 AND (8) 5545341 UPDATED BOM REVISIONS | 12/30/2015 | JM | 00741 |



| ITEM NO. | PART NUMBER | DESCRIPTION | QTY | REV |
|----------|-------------|---|-----|-----|
| 1 | 5215601 | HD-9ST/STX CROSSTUBE ASSEMBLY, SMALL WINDOW | 1 | G |
| 2 | 5215602 | HD-9ST/STX CROSSTUBE ASSEMBLY, LARGE WINDOW | 1 | G |
| 3 | 5600919 | HD-7P/7500BLX/9STX/9XW SAFETY LADDER WELDMENT | 4 | B |
| 4 | 5600639 | HD-7P/7500BLX/9STX/9XW POWER POST WELDMENT | 1 | C |
| 5 | 5600640 | HD-7P/7500BLX/9STX/9XW OFF SIDE POST WELDMENT | 3 | C |
| 6 | 5215192 | HD-7500BLX/9STX/9SWX/9XW POWER SIDE RAMP ASSEMBLY | 1 | U |
| 7 | 5600205 | HD-7500BLX/9STX/ 9SWX/9XL/9XW OFFSIDE RAMP WELDMENT | 1 | H |
| 8 | 5600890 | HD-7/7500/9 SERIES TIRE STOP PLATE WELDMENT | 2 | F |
| 9 | 5215193 | HD-7500BL/BLX, 9/ST/STX/XW DRIVE UP RAMP ASSEMBLY | 2 | F |
| 10 | 5535021 | NUT M16 x 2.0 | 4 | - |
| 11 | 5535008 | NUT M16 x 2 NL | 4 | - |
| 12 | 5545025 | WASHER M16 x 30mm FLAT | 4 | - |
| 13 | 5746381 | HDS-35 SPACER, SAFETY LADDER, 17.5mm LG | 4 | A |
| 14 | 5535013 | NUT M10 x 1.5 NL | 4 | - |
| 15 | 5545341 | WASHER M10 x Ø20 FLAT | 8 | - |
| 16 | 5530167 | HHB M10 x 1.5 x 45mm | 4 | - |

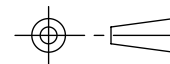
DO NOT SCALE DRAWING

NAME DATE

DRAWN TM 08/11/2014

CHECKED - -

THIRD ANGLE PROJECTION



PROPRIETARY AND CONFIDENTIAL
THE INFORMATION CONTAINED IN THIS DRAWING IS
THE SOLE PROPERTY OF BENDPAK INC. ANY
REPRODUCTION IN PART OR AS A WHOLE WITHOUT
THE WRITTEN PERMISSION OF BENDPAK INC. IS
PROHIBITED.

BendPak 1645 LEMONWOOD DR.
SANTA PAULA, CA 93060

TITLE: HD-9STX LIFT
SUPERSTRUCTURE

SIZE DWG. NO. REV

A 5245392 E

SCALE: 1:40

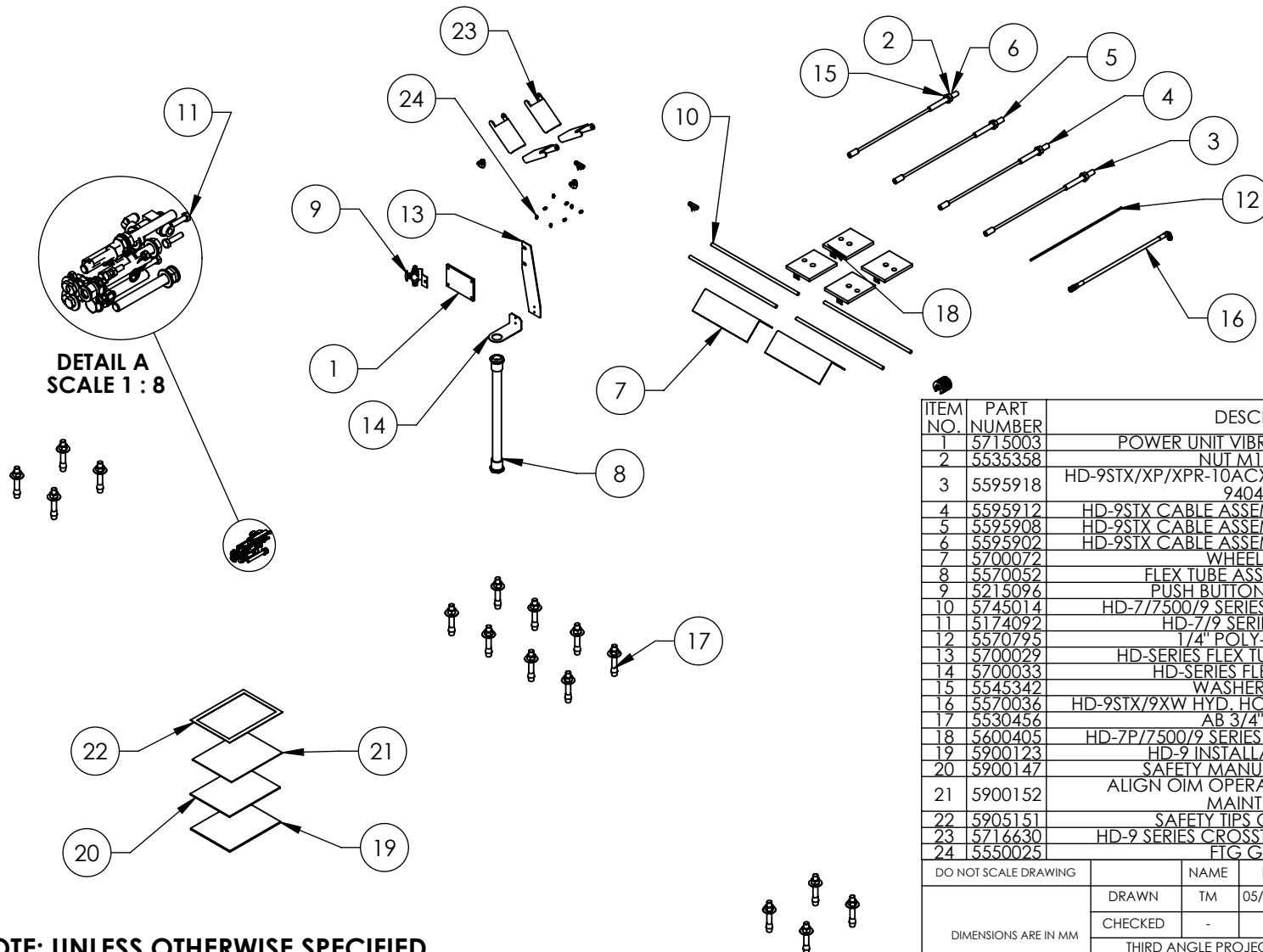
SHEET 1 OF 1

NOTE: UNLESS OTHERWISE SPECIFIED.

- SEE SHIPPING INSTRUCTIONS FOR FINAL PACKAGING
- THREAD M16 HARDWARE ONTO LADDER BOLTS AS SHOWN

NEXT ASSEMBLY
5260528

| REVISION | | | | |
|----------|--|------------|-----------|-------|
| REV | DESCRIPTION | DATE | EDITED BY | ECO# |
| C | UPDATED BOM REVISION | 01/12/2015 | MR | 00675 |
| D | REMOVED 5905103, 5905200, 5905402, 5905465, 5905940, AND 5930605, UPDATED BOM REVISION | 08/14/2015 | TM | 00683 |
| E | REMOVED 5900151 ADDED (4) 5716630 AND (8) 5550025 | 12/2/2015 | JM | 00740 |



| ITEM NO. | PART NUMBER | DESCRIPTION | QTY. | REV |
|----------|-------------|---|----------|-----|
| 1 | 5715003 | POWER UNIT VIBRATION DAMPENER | 1 | B |
| 2 | 5535358 | NUT M18 x 2.5 NL | 4 | - |
| 3 | 5595918 | HD-9STX/XP/XPR-10ACX CABLE ASSEMBLY Ø10 x 9404mm ST | 1 | D |
| 4 | 5595912 | HD-9STX CABLE ASSEMBLY Ø10 x 7978mm ST | 1 | E |
| 5 | 5595908 | HD-9STX CABLE ASSEMBLY Ø10 x 4663mm ST | 1 | F |
| 6 | 5595902 | HD-9STX CABLE ASSEMBLY Ø10 x 3240mm ST | 1 | F |
| 7 | 5700072 | WHEEL CHOCK | 2 | A |
| 8 | 5570052 | FLEX TUBE ASSEMBLY 1170mm | 1 | B |
| 9 | 5215096 | PUSH BUTTON AIR ASSEMBLY | 1 | F |
| 10 | 5745014 | HD-7/7500/9 SERIES DRIVE UP RAMP PIN | 4 | B |
| 11 | 5174092 | HD-7/9 SERIES PARTS BAG | 1 | E |
| 12 | 5570795 | 1/4" POLY-FLO TUBING | 17000*mm | - |
| 13 | 5700029 | HD-SERIES FLEX TUBE BRACKET PLATE | 1 | F |
| 14 | 5700033 | HD-SERIES FLEX TUBE ANGLE | 1 | E |
| 15 | 5545342 | WASHER M18 FLAT | 4 | - |
| 16 | 5570036 | HD-9STX/9XW HYD. HOSE ASSY Ø6.4 x 3683mm | 1 | E |
| 17 | 5530456 | AB 3/4" x 4 - 3/4" | 16 | - |
| 18 | 5600405 | HD-7P/7500/9 SERIES TOP PLATE WELDMENT | 4 | C |
| 19 | 5900123 | HD-9 INSTALLATION MANUAL | 1 | - |
| 20 | 5900147 | SAFETY MANUAL ALI / SM 93-1 | 1 | - |
| 21 | 5900152 | ALIGN OIM OPERATION INSPECTION & MAINTENANCE | 1 | - |
| 22 | 5905151 | SAFETY TIPS CARD ALI-ST 90 | 1 | - |
| 23 | 5716630 | HD-9 SERIES CROSSTUBE COVER, PLASTIC | 4 | A |
| 24 | 5550025 | FIG GRS M6x1 | 8 | PRE |

| | | | |
|------------------------|--|---|------------|
| DO NOT SCALE DRAWING | | NAME | DATE |
| DRAWN | | TM | 05/09/2013 |
| CHECKED | | - | - |
| THIRD ANGLE PROJECTION | | | |
| | | BendPak. 1645 LEMONWOOD DR. SANTA PAULA, CA 93060 | |
| DIMENSIONS ARE IN MM | | TITLE: PARTS BOX HD-9STX | |
| | | SIZE DWG. NO. | REV |
| | | A 5250189 | E |
| | | SCALE: 1:25 SHEET 1 OF 1 | |

NOTE: UNLESS OTHERWISE SPECIFIED.

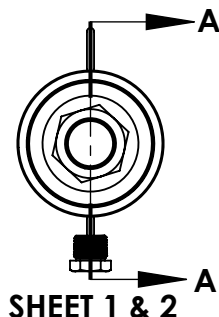
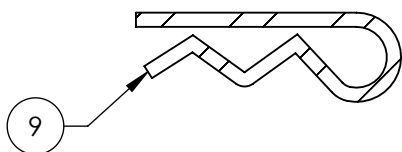
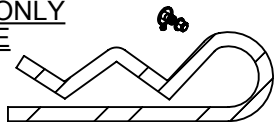
- SEE SHIPPING INSTRUCTIONS FOR FINAL PACKAGING
- INSERT PARTS BAG INTO PARTS BOX FOR SHIPMENT
- THREAD 5535358 WITH 5545342 ONTO CABLES FOR SHIPMENT
- HOSES AND CABLES IN REPRESENTATIONAL FORM
- (*) LENGTH FOR REFERENCE ONLY

NEXT ASSEMBLY
5260528

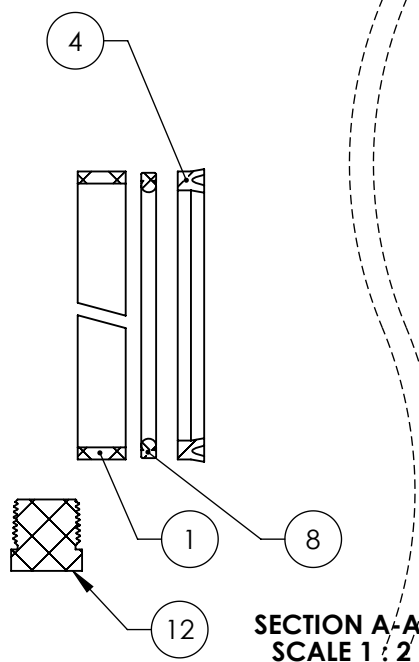


| REVISION | | | | |
|----------|--|------------|-----------|-------|
| REV | DESCRIPTION | DATE | EDITED BY | ECO# |
| E | UPDATED BOM REVISION | 07/09/2012 | TM | 00534 |
| F | ADDED 5505350, 5545031 AND 5535363 | 01/14/2015 | MR | 00675 |
| G | ADDED 5580112, REMOVED 5540114, UPDATED BOM REVISION | 03/27/2015 | MR | 00683 |

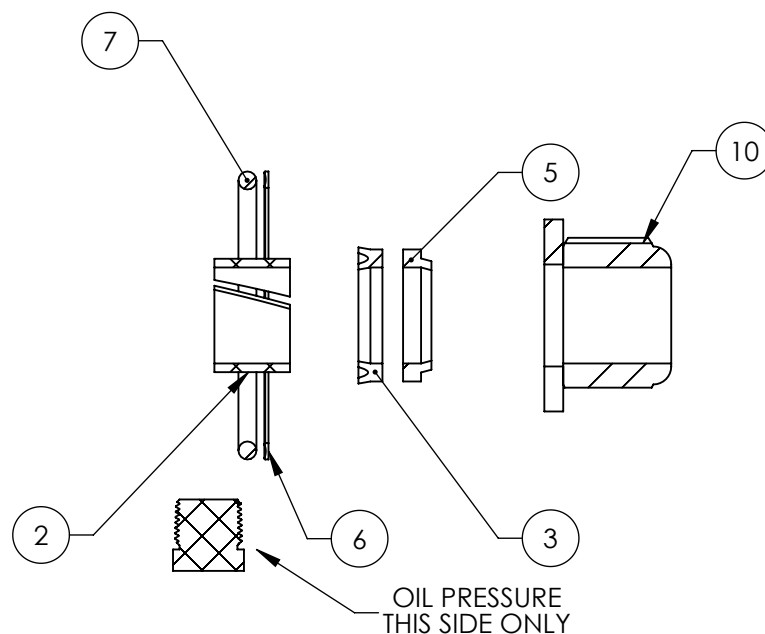
ISOMETRIC VIEW
FOR REFERENCE ONLY
DO NOT SCALE



SHEET 1 & 2





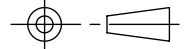
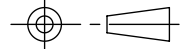
SECTION A-A
SCALE 1:2



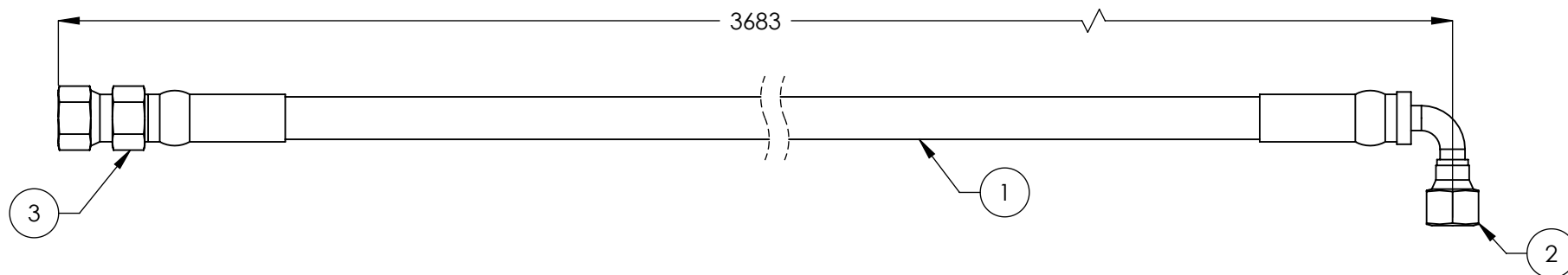
NOTE: UNLESS OTHERWISE SPECIFIED.

1. GREASE SEALS PRIOR TO ASSEMBLY
2. PRESSURE TEST CYLINDER ASSEMBLY 100% TO 3,600 PSI. (NO LEAKS)
3. MARK IN APPROXIMATE LOCATION WITH THE FOLLOWING INFORMATION: MANUFACTURER MONTH/ YEAR PART NUMBER
4. HERCULES HU18-2.62-37 MAY BE USED IN PLACE OF CUP SEAL UN 66.2-76.2.
5. PARKER 4615-SHD-01000, HERCULES ST-100 OR AFM D-1000 MAY BE USED IN PLACE OF RECO D-1000
6. DISOGRIN 001-073, HERCULES DRU18-1.00-31 OR PARKER UR 18701000-250 MAY BE USED IN PLACE OF RECO UN-1000-1375-0250
7. HERCULES 25.4-30.4-20 POM MAY BE USED IN PLACE OF WR-01250-0500-125
8. HERCULES 27.2-69.8-12 POM MAY BE USED IN PLACE OF WR-03000-0500-125
9. VERIFY HYDRAULIC PORTS ARE CAPPED WITH PLUGS

| ITEM NO | PART NUMBER | DESCRIPTION | QTY | REV |
|---------|------------------------|-----------------------------------|-----|-----|
| 1 | WR 76.2-69.8-12.7 POM | WEAR RING | 1 | -- |
| 2 | WR 30.4-25.4-20 POM | WEAR RING | 1 | -- |
| 3 | RECO UN-1000-1375-0250 | PISTON SEAL d25.40 D34.93 h6.35 | 1 | -- |
| 4 | CUP SEAL UN 66.2-76.2 | PISTON SEAL UN 66.2-76.2 | 1 | -- |
| 5 | RECO D-1000 | WIPER | 1 | -- |
| 6 | -334 BUANA 90 | BACKUP RING | 1 | -- |
| 7 | -334 BUANA 70 | O-RING | 1 | -- |
| 8 | GLYD GS55044-0762 | GLYD RING PISTON SEAL | 1 | -- |
| 9 | 5505350 | MODEL#211 HAIR PIN/ LARGE | 2 | -- |
| 10 | 5535363 | NUT 1"-14 NL | 1 | A |
| 11 | 5545031 | WASHER Ø2.0"x Ø1-1/16" x 5mm FLAT | 1 | -- |
| 12 | 5580112 | 3/8-18 NPT PLASTIC SCREW PLUG | 2 | -- |

| | | | | | | |
|---|--|---|------|------------------------|---|--------------|
| DO NOT SCALE DRAWING | | NAME | DATE | | | |
| DIMENSIONS ARE IN MM | | DRAWN | AC | 05/11/2010 |  1645 LEMONWOOD DR. SANTA PAULA, CA 93060 | |
| | | CHECKED | CA | 08/27/2015 | | |
| | |  | | THIRD ANGLE PROJECTION | | |
|  | | | | SIZE DWG. NO. | REV | |
| | | | | A 5502166 | G | |
| PROPRIETARY AND CONFIDENTIAL THE INFORMATION CONTAINED IN THIS DRAWING IS THE SOLE PROPERTY OF BENDPAK INC. ANY REPRODUCTION IN PART OR AS A WHOLE WITHOUT THE WRITTEN PERMISSION OF BENDPAK INC. IS PROHIBITED. | |  | | | SCALE: 1:4 | SHEET 1 OF 2 |

| REVISION | | | | |
|----------|--|------------|-----------|-------|
| REV | DESCRIPTION | DATE | EDITED BY | ECO# |
| C | UPDATED NAME TO INCLUDE NEXT ASSEMBLY, UPDATED NEXT ASSEMBLY | 12/11/2008 | AC | 00174 |
| D | REMOVED 9NX FROM TITLE | 02/24/2010 | AC | 00333 |
| D-001 | UPDATED NEXT ASSEMBLY | 11/23/2012 | TM | 00562 |
| D-002 | UPDATED NEXT ASSEMBLIES | 05/21/2013 | TM | 00593 |
| E | REPLACED 5570110 WITH 5570129 | 1/12/2015 | MR | 00675 |



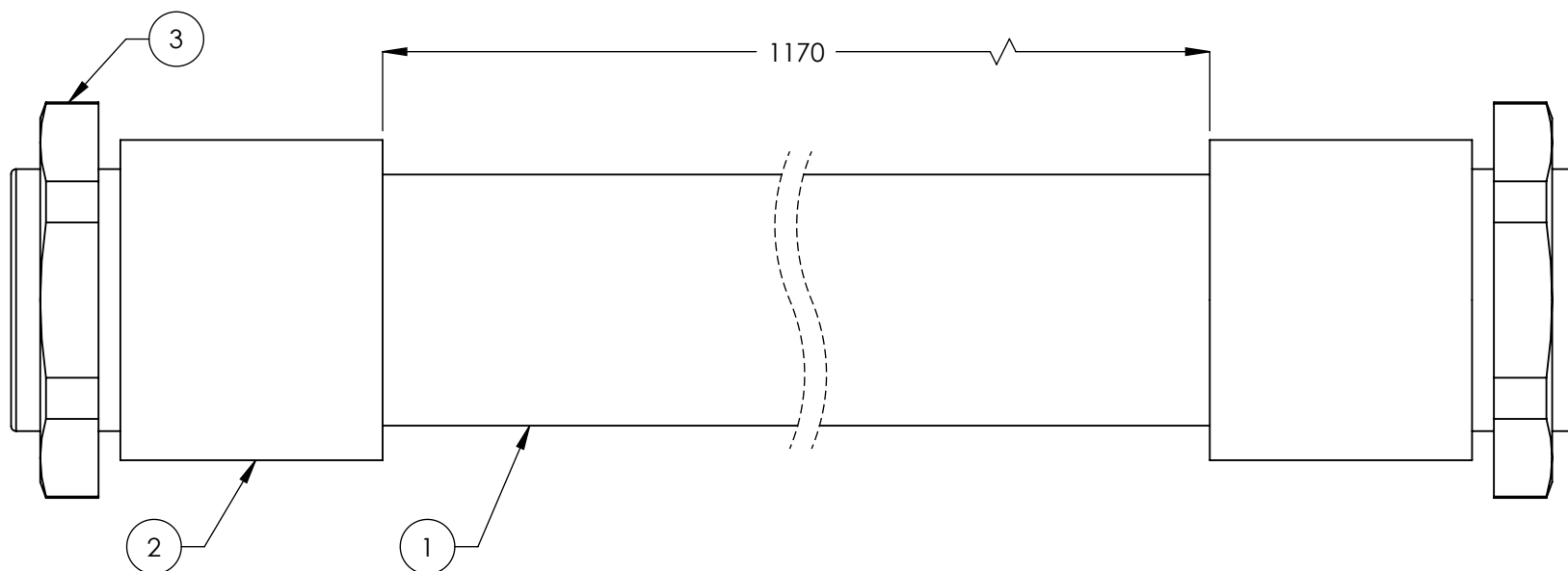
| ITEM NO. | PART NUMBER | DESCRIPTION | QTY. | REV |
|----------|-------------|------------------------------|---------|-----|
| 1 | 5570129 | Ø6.4 ID HYDRAULIC HOSE | 3617mm* | - |
| 2 | 5550345 | FTG ELB Ø1/4 CRIMP x -04 JIC | 1 | - |
| 3 | 5550325 | FTG NPL Ø1/4 CRIMP x -04 JIC | 1 | - |

| | | | |
|--|--|--|---------------|
| DO NOT SCALE DRAWING | | NAME | DATE |
| DIMENSIONS ARE IN MM TOLERANCES: 0. = ±1.5 0.0 = ±1.0 | | DRAWN | AC 01/18/2008 |
| | | CHECKED | VB 02/06/2015 |
| ANGULAR: MACH ±2° SURFACE FINISH 1.6 ISO Ra µm FOR MACHINED SURFACES UNLESS OTHERWISE SPECIFIED | | THIRD ANGLE PROJECTION | |
| | | | |
| General Table NEXT ASSEMBLY 5250168 5250187 5250189 5570036 | | PROPRIETARY AND CONFIDENTIAL THE INFORMATION CONTAINED IN THIS DRAWING IS THE SOLE PROPERTY OF BENDPAK INC. ANY REPRODUCTION IN PART OR AS A WHOLE WITHOUT THE WRITTEN PERMISSION OF BENDPAK INC. IS PROHIBITED. | |
| | | TITLE: HD-9STX/9XW HYD. HOSE ASSY Ø6.4 x 3683mm | |
| SIZE DWG. NO. | | REV | |
| A 5570036 | | E | |
| SCALE: 1:2 | | | SHEET 1 OF 1 |


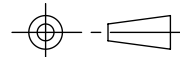
NOTE: UNLESS OTHERWISE SPECIFIED.

- FOR ITEM 1 SPECIFICATIONS REFER TO PART SPECIFICATION FORM
- (*)ITEM 1 QTY FOR REFERENCE ONLY

| REVISION | | | | |
|----------|--|------------|-----------|-------|
| REV | DESCRIPTION | DATE | EDITED BY | ECO# |
| A | PRODUCTION RELEASE | 01/18/2008 | AC | 00137 |
| B | UPDATED TUBE TO NEW STYLE, UPDATED NEXT ASSEMBLY | 12/11/2008 | AC | 00174 |
| B-001 | UPDATED NEXT ASSEMBLY | 05/04/2009 | AC | 00277 |
| B-002 | UPDATED NEXT ASSEMBLY | 02/24/2010 | AC | 00333 |
| B-003 | UPDATED NEXT ASSEMBLY | 06/18/2010 | AC | 00366 |
| B-004 | UPDATED NEXT ASSEMBLIES | 05/22/2013 | TM | 00593 |



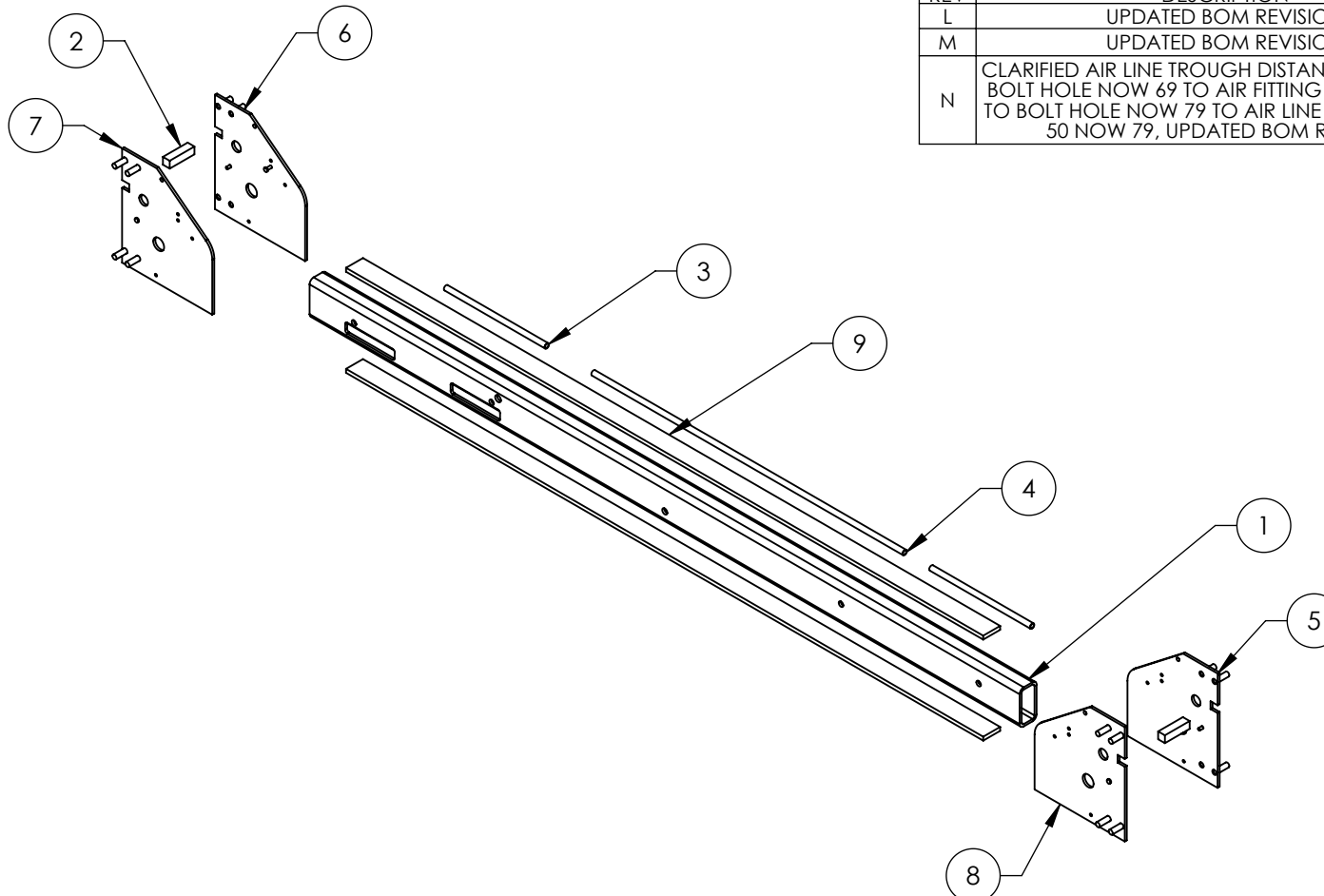
| ITEM NO | PART NUMBER | DESCRIPTION | QTY | REV |
|---------|-------------|---------------------------|-----|-----|
| 1 | 5570053 | PE FLEX TUBE Ø34.5xØ29 | 1 | - |
| 2 | 5555555 | WQG1-M36/AD34.5 CONNECTOR | 2 | - |
| 3 | 5535050 | PLASTIC NUT M36 x 2 | 2 | - |

| | | | | | | | | | | | |
|--|--|------------------------------|--|---|--|---|--|---|--|--------------|--|
| DO NOT SCALE DRAWING | | NAME | | DATE | |  BendPak. PROVIDING AUTOMATIC BRIDGE SOLUTIONS | | 1645 LEMONWOOD DR. SANTA PAULA, CA 93060 | | | |
| DIMENSIONS ARE IN MM TOLERANCES: 0. = ±1.5 0.0 = ±1.0 0.00 = ±0.25 0.000 = ±0.13 ANGULAR: MACH ±2° SURFACE FINISH 1.6 ISO Ra µm FOR MACHINED SURFACES UNLESS OTHERWISE SPECIFIED MATERIAL: | | DRAWN | | MT | | 01/18/2008 | | | | | |
| | | CHECKED | | | | | | | | | |
| | | THIRD ANGLE PROJECTION | |  | | TITLE: | | FLEX TUBE ASSEMBLY 1170mm | | | |
| SIZE: | | PROPRIETARY AND CONFIDENTIAL | | THE INFORMATION CONTAINED IN THIS DRAWING IS THE SOLE PROPERTY OF BENDPAK INC. ANY REPRODUCTION IN PART OR AS A WHOLE WITHOUT THE WRITTEN PERMISSION OF BENDPAK INC. IS PROHIBITED. | | SIZE | | DWG. NO. | | REV | |
| | | | | | | A | | 5570052 | | B | |
| | | | | | | | | SCALE: 1:1 | | SHEET 1 OF 1 | |

NOTE: UNLESS OTHERWISE SPECIFIED.


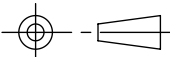
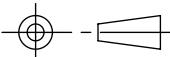
- FOR ITEM 1 SPECIFICATIONS REFER TO PART SPECIFICATION FORM
- (*)ITEM 1 QTY FOR REFERENCE ONLY

| NEXT ASSEMBLY |
|---------------|
| 5250185 |
| 5250186 |
| 5250188 |
| 5250189 |



| REVISION | | | | |
|----------|--|------------|-----------|-------|
| REV | DESCRIPTION | DATE | EDITED BY | ECO# |
| L | UPDATED BOM REVISION | 03/31/2014 | TM | 00648 |
| M | UPDATED BOM REVISION | 09/30/2014 | TM | 00664 |
| N | CLARIFIED AIR LINE TROUGH DISTANCE, WAS 31 TO BOLT HOLE NOW 69 TO AIR FITTING HOLE, WAS 25 TO BOLT HOLE NOW 79 TO AIR LINE TROUGH, WAS 50 NOW 79, UPDATED BOM REVISION | 05/28/2015 | TM | 00683 |

| ITEM NO | PART NUMBER | DESCRIPTION | QTY | REV |
|---------|-------------|--|-----|-----|
| 1 | 5766052 | HD-7P/7PXN/9PL/9ST/9STX SMALL WINDOW CROSSTUBE | 1 | E |
| 2 | 5760010 | HD-7/9 SERIES CROSSTUBE SAFETY BLOCK | 2 | B |
| 3 | 5755018 | AIR LINE TROUGH Ø13 x Ø9.8 x 297 | 2 | C |
| 4 | 5755020 | AIR LINE TROUGH Ø13 x Ø9.8 x 918 | 1 | C |
| 5 | 5620130 | HD-7/7500/9 SERIES CROSS TUBE END PLATE #1 | 1 | J |
| 6 | 5620131 | HD-7/7500/9 SERIES CROSS TUBE END PLATE #2 | 1 | J |
| 7 | 5620132 | HD-7/7500/9 SERIES CROSS TUBE END PLATE #3 | 1 | J |
| 8 | 5620133 | HD-7/7500/9 SERIES CROSS TUBE END PLATE #4 | 1 | J |
| 9 | 5735052 | HD-7P/7PXN/9ST/9STX CROSS TUBE STRAP | 2 | D |

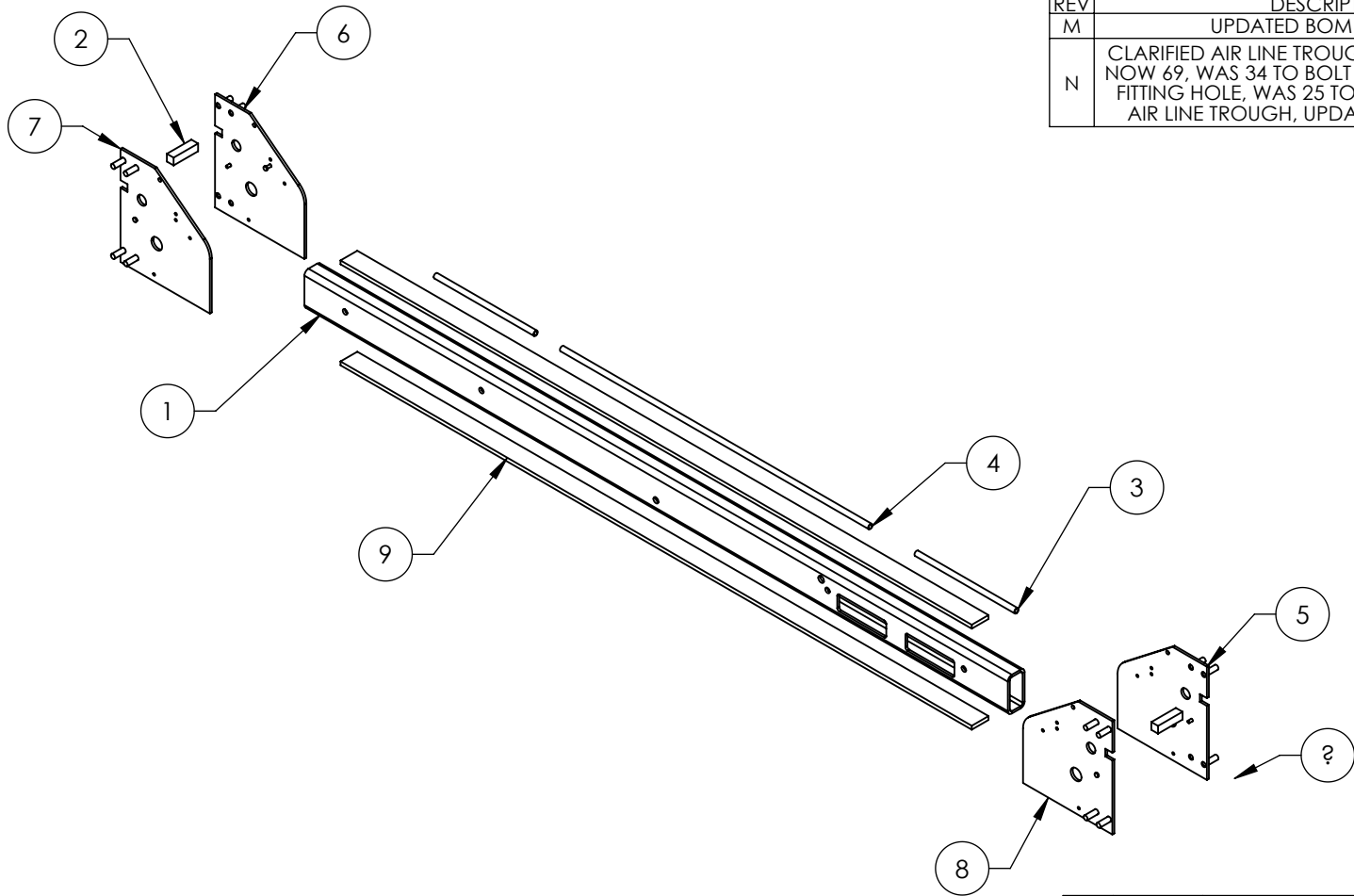
| | | | | | |
|--|--|--|------|---|---|
| DO NOT SCALE DRAWING | | NAME | DATE |  BendPak. 1645 LEMONWOOD DR. SANTA PAULA, CA 93060 | |
| DIMENSIONS ARE IN MM TOLERANCES: 0. = ±1.5 0.0 = ±0.5 ANGULAR: 0. = ±2° SURFACE FINISH 1.6 ISO Ra µm FOR MACHINED SURFACES UNLESS OTHERWISE SPECIFIED | | DRAWN | AC | 11/11/2008 |  |
| | | CHECKED | CA | 08/27/2015 | |
|  | | THIRD ANGLE PROJECTION | | | TITLE: HD-9ST/9STX SMALL WINDOW CROSSTUBE WELDMENT |
| | | <p>PROPRIETARY AND CONFIDENTIAL THE INFORMATION CONTAINED IN THIS DRAWING IS THE SOLE PROPERTY OF BENDPAK INC. ANY REPRODUCTION IN PART OR AS A WHOLE WITHOUT THE WRITTEN PERMISSION OF BENDPAK INC. IS PROHIBITED.</p> | | | SIZE DWG. NO. REV A 5600152 N |
| | | SCALE: 1:15 | | | SHEET 1 OF 2 |

NOTE: UNLESS OTHERWISE SPECIFIED.

- BREAK AND DEBURR ALL SHARP EDGES 0.3mm
- REMOVE ALL WELD SPLATTER
- PAINT BENDPAK BLUE


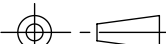
NEXT ASSEMBLY
5215601

PROPRIETARY AND CONFIDENTIAL
THE INFORMATION CONTAINED IN THIS DRAWING IS
THE SOLE PROPERTY OF BENDPAK INC. ANY
REPRODUCTION IN PART OR AS A WHOLE WITHOUT
THE WRITTEN PERMISSION OF BENDPAK INC. IS
PROHIBITED.



| REVISION | | | | |
|----------|---|------------|-----------|-------|
| REV | DESCRIPTION | DATE | EDITED BY | ECO# |
| M | UPDATED BOM REVISIONS | 09/30/2014 | TM | 00664 |
| N | CLARIFIED AIR LINE TROUGH DISTANCE, WAS 50 NOW 69, WAS 34 TO BOLT HOLE NOW 69 TO AIR FITTING HOLE, WAS 25 TO BOLT HOLE NOW 79 AIR LINE TROUGH, UPDATED BOM REVISION | 05/28/2015 | TM | 00683 |

| ITEM NO | PART NUMBER | DESCRIPTION | QTY | REV |
|---------|-------------|--|-----|-----|
| 1 | 5766053 | HD-9ST/9STX LARGE WINDOW CROSSTUBE | 1 | E |
| 2 | 5760010 | HD-7/9 SERIES CROSSTUBE SAFETY BLOCK | 2 | B |
| 3 | 5755018 | AIR LINE TROUGH Ø13 x Ø9.8 x 297 | 2 | C |
| 4 | 5755020 | AIR LINE TROUGH Ø13 x Ø9.8 x 918 | 1 | C |
| 5 | 5620130 | HD-7/7500/9 SERIES CROSS TUBE END PLATE #1 | 1 | J |
| 6 | 5620131 | HD-7/7500/9 SERIES CROSS TUBE END PLATE #2 | 1 | J |
| 7 | 5620132 | HD-7/7500/9 SERIES CROSS TUBE END PLATE #3 | 1 | J |
| 8 | 5620133 | HD-7/7500/9 SERIES CROSS TUBE END PLATE #4 | 1 | J |
| 9 | 5735052 | HD-7P/7PXN/9ST/9STX CROSS TUBE STRAP | 2 | D |

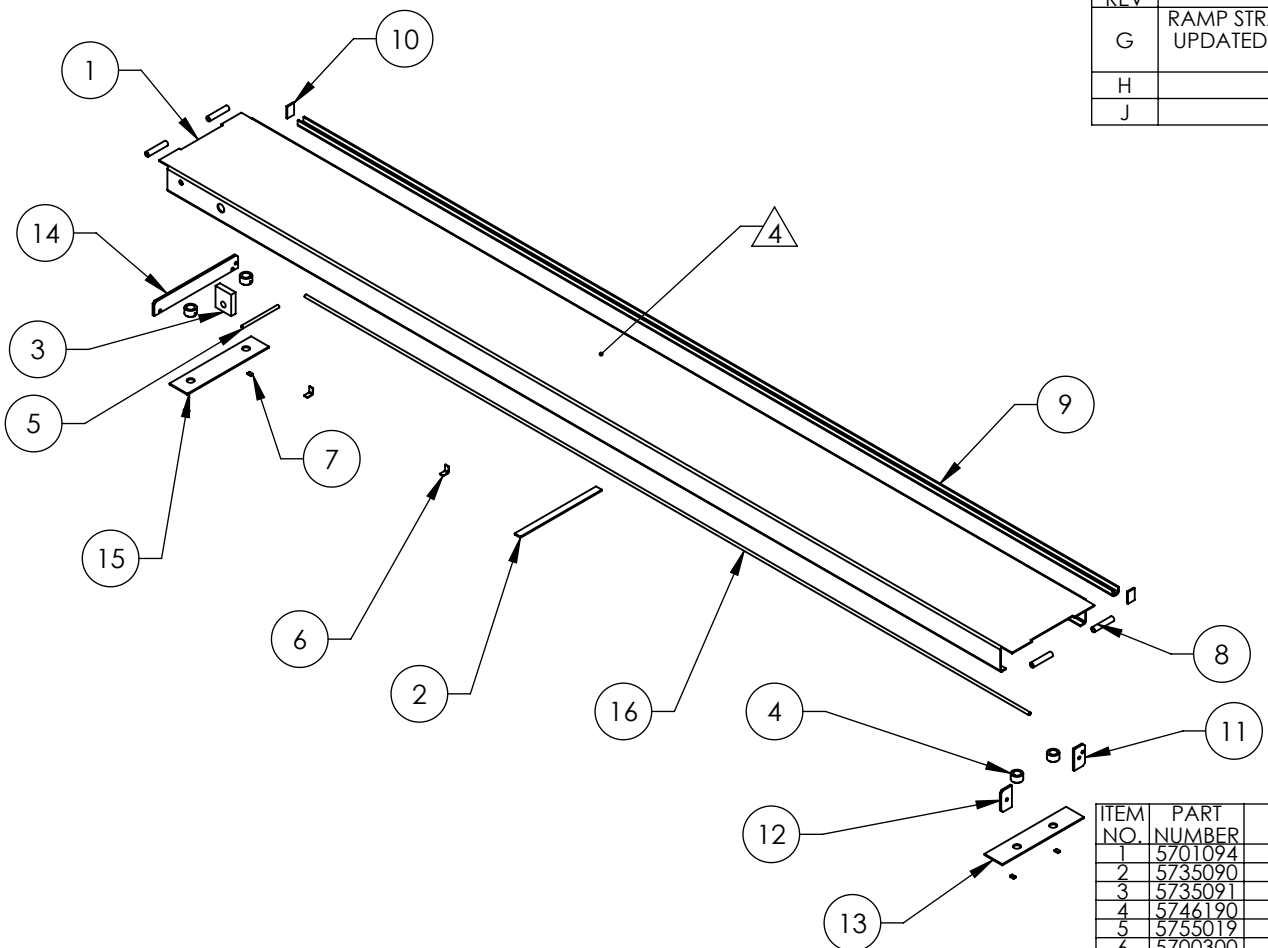
| | | | | | | | | | |
|--|--|---|--|---|--|---|--|---|--|
| DO NOT SCALE DRAWING | | NAME | | DATE | |  BendPak. <small>PROVIDING AUTOMOTIVE BRIDGE SOLUTIONS</small> | | 1645 LEMONWOOD DR. SANTA PAULA, CA 93060 | |
| DIMENSIONS ARE IN MM TOLERANCES: 0. = ±1.5 0.0 = ±0.5 ANGULAR: 0. = ±2° SURFACE FINISH 1.6 ISO Ra µm FOR MACHINED SURFACES UNLESS OTHERWISE SPECIFIED | | DRAWN | | AC | | 11/11/2008 | | | |
| | | CHECKED | | - | | - | | | |
| | | THIRD ANGLE PROJECTION | |  | | TITLE: HD-9ST/9STX LARGE WINDOW CROSSTUBE WELDMENT | | | |
| | | PROPRIETARY AND CONFIDENTIAL THE INFORMATION CONTAINED IN THIS DRAWING IS THE SOLE PROPERTY OF BENDPAK INC. ANY REPRODUCTION IN PART OR AS A WHOLE WITHOUT THE WRITTEN PERMISSION OF BENDPAK INC. IS PROHIBITED. | | SIZE | | DWG. NO. | | REV | |
| | | | | A | | 5600153 | | N | |
| | | | | | | SCALE: 1:15 | | SHEET 1 OF 2 | |

NOTE: UNLESS OTHERWISE SPECIFIED.


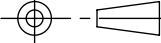
- BREAK AND DEBURR ALL SHARP EDGES 0.3mm
- REMOVE ALL WELD SPLATTER
- PAINT BENDPAK BLUE

NEXT ASSEMBLY
5215602

| REVISION | | | | |
|----------|---|------------|-----------|-------|
| REV | DESCRIPTION | DATE | EDITED BY | ECO# |
| G | RAMP STRAP DISTANCE WAS 2147 NOW 1969, UPDATED NEXT ASSEMBLY, UPDATED TITLE TO REFLECT WHERE USED | 06/03/2011 | TM | 00464 |
| H | UPDATED BOM REVISION | 08/20/2012 | TM | 00541 |
| J | UPDATED BOM REVISION | 09/02/2014 | TM | 00664 |



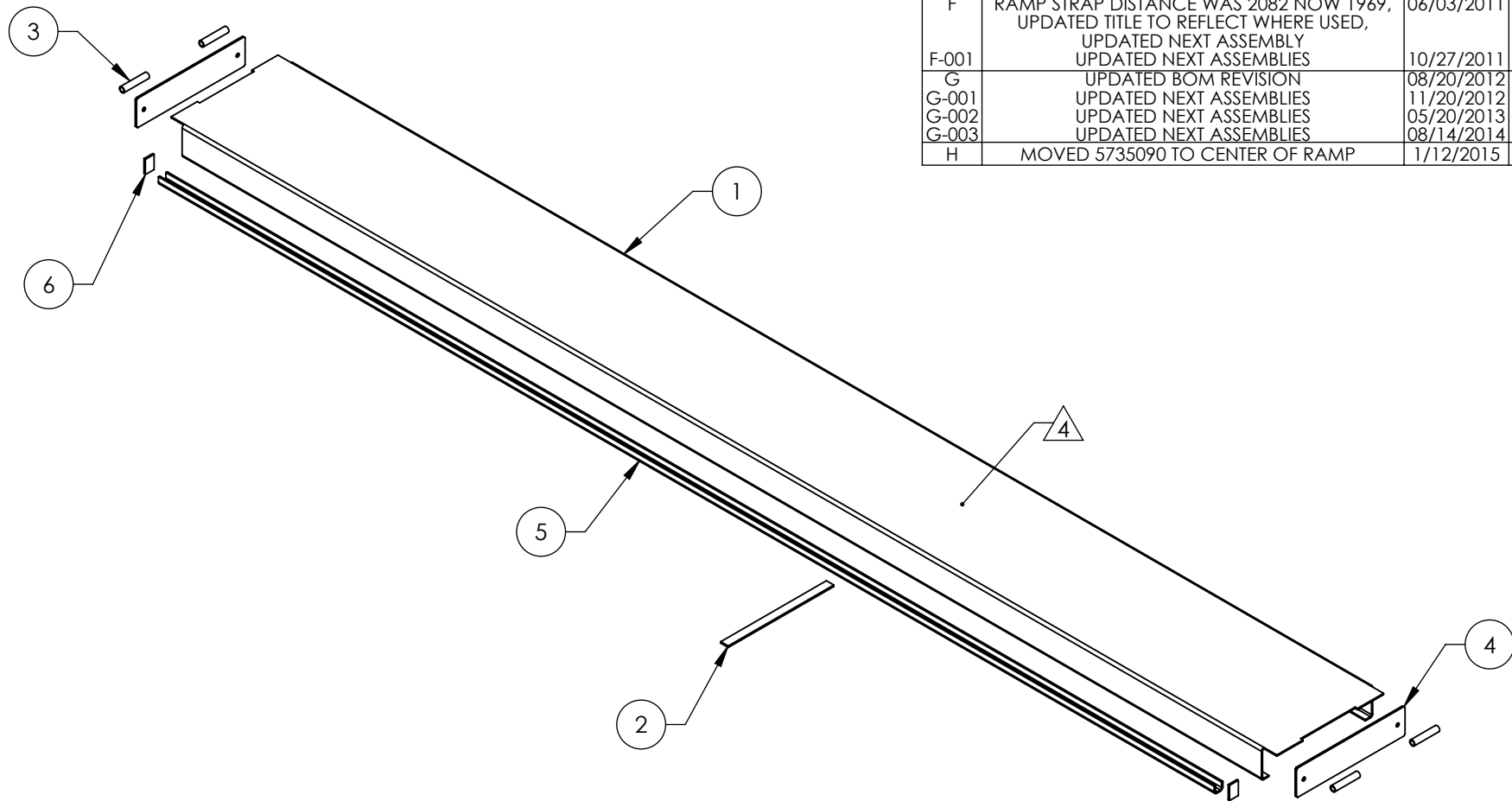
| ITEM NO. | PART NUMBER | DESCRIPTION | QTY | REV |
|----------|-------------|---|-----|-----|
| 1 | 5701094 | HD-7500BLX/9STX/9SWX/ 9XW/9AE EXTENDED RAMP | 1 | E |
| 2 | 5735090 | HD-7500/9 SERIES RAMP STRAP | 1 | B |
| 3 | 5735091 | HD-7500/9 SERIES CYLINDER CLEVIS | 1 | C |
| 4 | 5746190 | HD-7/7500/9 SERIES RAMP SHEAVE BUSHING | 4 | C |
| 5 | 5755019 | AIR LINE TROUGH Ø13 x Ø9.8 x 203 | 1 | B |
| 6 | 5700300 | HYD. HOSE HOLDER | 2 | A |
| 7 | 5735028 | PIN STOP | 4 | B |
| 8 | 5755020 | HD-7/7500/9 SERIES DRIVE UP RAMP HINGE TUBE | 4 | C |
| 9 | 5700192 | HD-7PX SERIES, HD-9STX/9SWX/ 9XW/9AE ROLLING BRIDGE BEAM | 1 | D |
| 10 | 5735032 | HD-7/9/14, HDS/HDSO-14, XR-T2000 ROLLING JACK RAIL CLOSEOUT | 2 | C |
| 11 | 5736203 | HD-7500/9 SERIES 4-SHEAVE RIGHT RAMP BOLT PLATE | 1 | C |
| 12 | 5736204 | HD-7500/9 SERIES 4-SHEAVE LEFT RAMP BOLT PLATE | 1 | C |
| 13 | 5736200 | HD-7500/9 SERIES 4-SHEAVE RAMP END PLATE | 1 | B |
| 14 | 5736202 | HD-7/7500/9 SERIES 2-SHEAVE RAMP BOLT PLATE | 1 | C |
| 15 | 5736201 | HD-7/7500/9 SERIES 2-SHEAVE RAMP END PLATE | 1 | B |
| 16 | 5755024 | AIR LINE TROUGH Ø13 x Ø9.8 x 4064 | 1 | A |

| | | | | | |
|---|----|--|------|--|---|
| DO NOT SCALE DRAWING | | NAME | DATE | <div> BendPak. POWERED ATTACHE BRIDGE ELEVATOR</div> <div>1645 LEMONWOOD DR. SANTA PAULA, CA 93060</div> | |
| DIMENSIONS ARE IN MM | | DRAWN | AC | | |
| TOLERANCES: | | CHECKED | MT | 09/13/2012 | <div>TITLE: HD-7500BLX/9STX/ 9SWX/9XL/9XW POWER SIDE WELDMENT</div> <div>SIZE DWG. NO. A 5600192 REV J</div> <div>SCALE: 1:30</div> <div>SHEET 1 OF 4</div> |
| 0. = ±1.5 0.0 = ±0.5 | | <div>THIRD ANGLE PROJECTION</div> <div></div> | | | |
| ANGULAR: 0. = ±2° | | | | | |
| SURFACE FINISH 1.6 ISO Ra µm FOR MACHINED SURFACES UNLESS OTHERWISE SPECIFIED | | | | | |
| MATERIAL: -- | | | | | |
| SIZE: | -- | <div>PROPRIETARY AND CONFIDENTIAL</div> <div>THE INFORMATION CONTAINED IN THIS DRAWING IS THE SOLE PROPERTY OF BENDPAK INC. ANY REPRODUCTION IN PART OR AS A WHOLE WITHOUT THE WRITTEN PERMISSION OF BENDPAK INC. IS PROHIBITED.</div> | | | |

NOTE: UNLESS OTHERWISE SPECIFIED.

- BREAK AND DEBURR ALL SHARP EDGES 0.3mm
- REMOVE ALL WELD SPLATTER
- PAINT BENDPAK BLUE
- APPLY #30 GRIT ALUMINUM OXIDE WHEN PAINTING TO TOP ONLY AFTER WELDING

| REVISION | | | | |
|----------|---|------------|-----------|-------|
| REV | DESCRIPTION | DATE | EDITED BY | ECO# |
| F | RAMP STRAP DISTANCE WAS 2082 NOW 1969, UPDATED TITLE TO REFLECT WHERE USED, UPDATED NEXT ASSEMBLY | 06/03/2011 | TM | 00464 |
| F-001 | UPDATED NEXT ASSEMBLIES | 10/27/2011 | TM | 00487 |
| G | UPDATED BOM REVISION | 08/20/2012 | TM | 00541 |
| G-001 | UPDATED NEXT ASSEMBLIES | 11/20/2012 | TM | 00562 |
| G-002 | UPDATED NEXT ASSEMBLIES | 05/20/2013 | TM | 00593 |
| G-003 | UPDATED NEXT ASSEMBLIES | 08/14/2014 | TM | 00664 |
| H | MOVED 5735090 TO CENTER OF RAMP | 1/12/2015 | MR | 00675 |


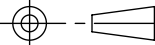


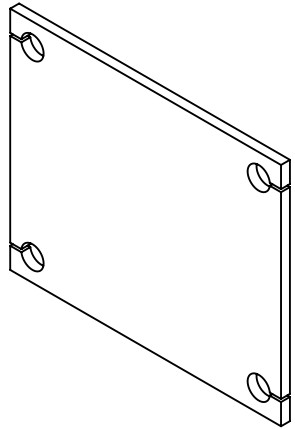
| ITEM NO | PART NUMBER | DESCRIPTION | QTY | REV |
|---------|-------------|---|-----|-----|
| 1 | 5701473 | HD-7/7500/9 SERIES EXTENDED RAMP | 1 | C |
| 2 | 5735090 | HD-7500/9 SERIES RAMP STRAP | 1 | B |
| 3 | 5755090 | HD-7/7500/9 SERIES DRIVE UP RAMP HINGE TUBE | 4 | C |
| 4 | 5736090 | HD-7/7500/9 SERIES RAMP END PLATE | 2 | C |
| 5 | 5700192 | HD-7PX SERIES, HD-9STX/9SWX/ 9XW/9AE ROLLING BRIDGE BEAM | 1 | D |
| 6 | 5735032 | HD-7/9/14, HDS/HDSO-14, XR-12000 ROLLING JACK RAIL CLOSEOUT | 2 | C |

NOTE: UNLESS OTHERWISE SPECIFIED.

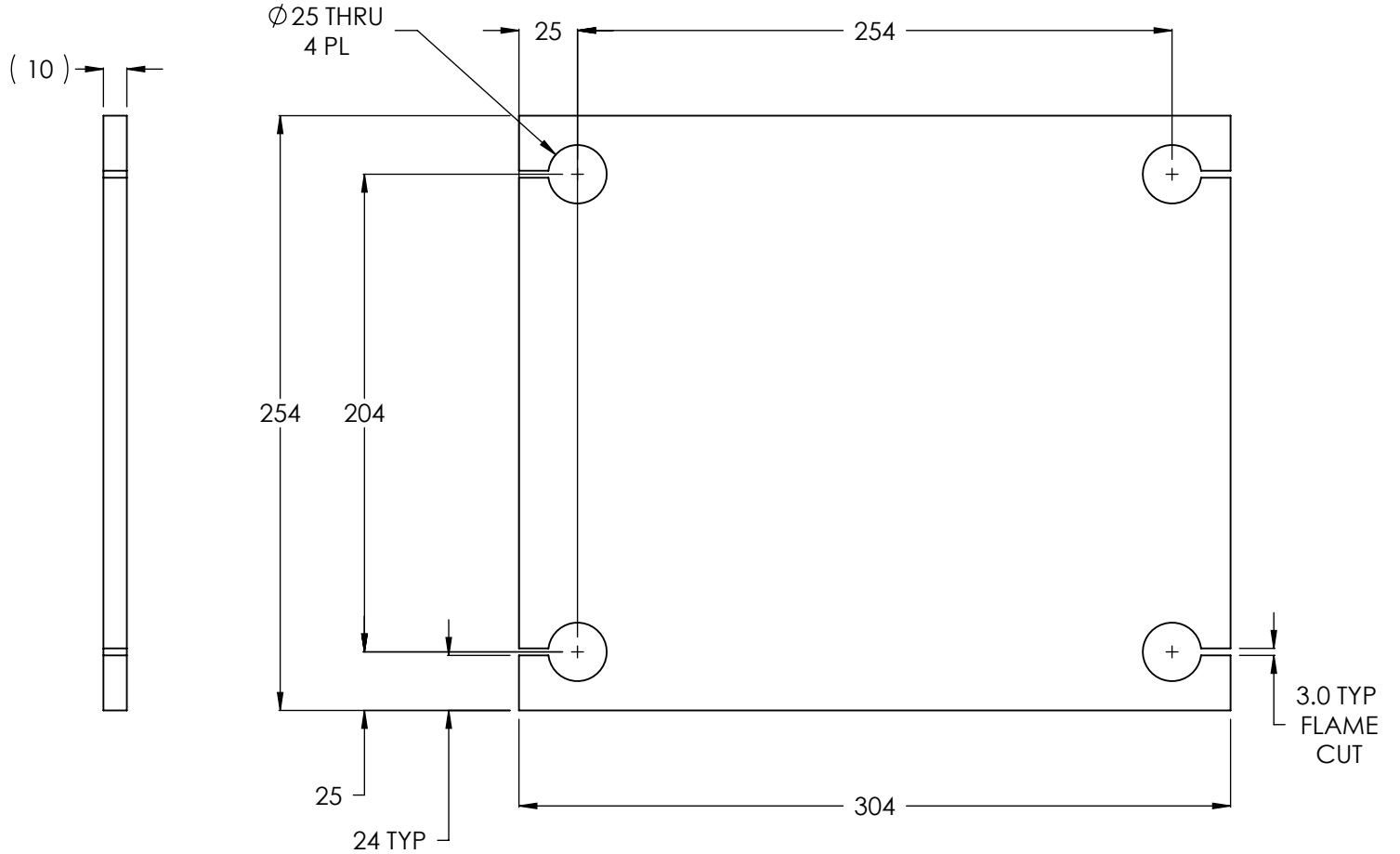
1. BREAK AND DEBURR ALL SHARP EDGES 0.3mm
2. REMOVE ALL WELD SPLATTER
3. PAINT BENDPAK BLUE
4. APPLY #30 GRIT ALUMINUM OXIDE WHEN PAINTING TO TOP ONLY AFTER WELDING

| NEXT ASSEMBLY |
|---------------|
| 5245381 |
| 5245382 |
| 5245389 |
| 5245392 |
| 5245393 |


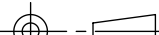
| | | | | | | | |
|---|--|--|------|--|--|------------|--------------|
| DO NOT SCALE DRAWING | | NAME | DATE | <div> BendPak. 1645 LEMONWOOD DR. PROVIDING AUTOMATIC BRIDGE SOLUTIONS SANTA PAULA, CA 93060</div> | | | |
| DIMENSIONS ARE IN MM TOLERANCES: 0. = ±1.5 0.0 = ±0.5 | | DRAWN | AC | | | 11/05/2008 | |
| | | CHECKED | CA | | | 08/27/2015 | |
| ANGULAR: 0. = ±2° | | THIRD ANGLE PROJECTION | | | TITLE: HD-7500BLX/9STX/ 9SWX/9XL/9XW OFFSIDE RAMP WELDMENT | | |
| | |  | | | SIZE | DWG. NO. | REV |
| | | | | | A | 5600205 | H |
| SURFACE FINISH 1.6 ISO Ra µm FOR MACHINED SURFACES UNLESS OTHERWISE SPECIFIED | | <p>PROPRIETARY AND CONFIDENTIAL</p> <p>THE INFORMATION CONTAINED IN THIS DRAWING IS THE SOLE PROPERTY OF BENDPAK INC. ANY REPRODUCTION IN PART OR AS A WHOLE WITHOUT THE WRITTEN PERMISSION OF BENDPAK INC. IS PROHIBITED.</p> | | | SCALE: 1:20 | | SHEET 1 OF 3 |



ISOMETRIC VIEW
FOR REFERENCE ONLY
DO NOT SCALE



| REVISION | | | | |
|----------|---|------------|-----------|-------|
| REV. | DESCRIPTION | DATE | EDITED BY | ECO# |
| B | UPDATE SHEET TEMPLATE | 03/31/2008 | MT | 00157 |
| B-001 | CHANGED SURFACE FINISH FROM 3.2 μm TO 1.6 Ra μm | 09/10/2008 | GJ | 00237 |
| B-002 | UPDATED NEXT ASSEMBLY | 10/30/2008 | AC | 00174 |
| B-003 | UPDATED NEXT ASSEMBLY | 11/12/2008 | TM | 00249 |
| C | UPDATED TITLE TO REFLECT WHERE USED | 02/26/2010 | AC | 00333 |
| D | UPDATED TITLE TO REFLECT WHERE USED | 06/02/2010 | AC | 00366 |
| D-001 | UPDATED NEXT ASSEMBLIES | 11/01/2011 | TM | 00487 |

| | | | | | | | | | | | |
|--|--|--|--|---|--|--|--|--|--|--------------|--|
| DO NOT SCALE DRAWING | | NAME | | DATE | |  BendPak. <small>PROVIDING AUTOMOTIVE SERVICE SOLUTIONS</small> | | 1645 LEMONWOOD DR. SANTA PAULA, CA 93060 | | | |
| <div>NEXT ASSEMBLY</div> <div>5600182</div> <div>5600183</div> <div>5600184</div> <div>5600185</div> <div>5600524</div> <div>5600525</div> <div>5600639</div> <div>5600640</div> <div>5600903</div> <div>5600904</div> <div>5620236</div> <div>5620237</div> | | DRAWN | | GJZ | | 02/29/2008 | | <div>THIRD ANGLE PROJECTION</div> <div></div> | | | |
| | | CHECKED | | | | | | | | | |
| | | DIMENSIONS ARE IN MM TOLERANCES: 0. = ±1.5 0.0 = ±0.5 ANGULAR: 0. = ±2° SURFACE FINISH 1.6 ISO Ra µm FOR MACHINED SURFACES UNLESS OTHERWISE SPECIFIED MATERIAL: HR ASTM A36 OR Q235 GB/T 700 SIZE: 10mm THK | | PROPRIETARY AND CONFIDENTIAL THE INFORMATION CONTAINED IN THIS DRAWING IS THE SOLE PROPERTY OF BENDPAK INC. ANY REPRODUCTION IN PART OR AS A WHOLE WITHOUT THE WRITTEN PERMISSION OF BENDPAK INC. IS PROHIBITED. | | TITLE: HD-7P/7500/9/14 SERIES POST BASE PLATE | | | | | |
| | | | | | | | | | | SIZE | |
| | | A | | 5731632 | | D | | SCALE: 1:3 | | SHEET 1 OF 1 | |

PART SPECIFICATION FORM

| | |
|-------------------------|--------------------------|
| BENDPAK Number: | 5900123 |
| MRP Description: | HD-9 INSTALLATION MANUAL |
| Date: | 05/12/2016 |
| ECO : | 00741 |

1. Engineering Specification

Application:

INSTALLATION MANUAL

Detailed Description:

WARNING

IMPORTANT SAFETY INSTRUCTIONS
SAVE THESE INSTRUCTIONS

PLEASE READ THE ENTIRE CONTENTS OF THIS MANUAL PRIOR TO INSTALLATION AND OPERATION. BY PROCEEDING YOU AGREE THAT YOU FULLY UNDERSTAND AND COMPREHEND THE FULL CONTENTS OF THIS MANUAL. FORWARD THIS MANUAL TO ALL OPERATORS. FAILURE TO OPERATE THIS EQUIPMENT AS DIRECTED MAY CAUSE INJURY OR DEATH.

400V/50HZ SUPPLY DETAILS ARE INCLUDED WITH ELECTRICAL CONNECTION BOX. CIRCULAR SUPPLY WIRING DETAILS IN THIS MANUAL.

Manual HD9 11 01-29-15
pnr 5900123

INSTALLATION AND OPERATION MANUAL

**9,000 POUND CAPACITY
COMMERCIAL GRADE
FOUR-POST LIFTS**

MODELS:
HD-9ST
HD-9
HD-9STX
HD-9XW
HD-9XL

READ FIRST

Do not operate this machine until you have read and understood all the safety instructions and warnings in this manual.



ORIGINAL INSTRUCTIONS IN ENGLISH LANGUAGE

Keep this operation manual near the machine at all times. Make sure that ALL USERS read this manual.

RECEIVING
The shipment should be thoroughly inspected as soon as it is received. The signed Bill of Lading is acknowledgement by the shipping carrier as receipt of this product as listed in your invoice as being in a good condition of shipment. If any of these goods listed on this Bill of Lading are missing or damaged, do not accept goods until the shipping carrier makes a notation on the freight bill of the missing or damaged goods. Do this for your own protection.

BE SAFE
Your new lift was designed and built with safety in mind. However, your overall safety can be increased with proper training and thoughtful operation on the part of the operator. DO NOT operate or repair this equipment without reading this manual and the important safety instructions shown inside. Keep this operation manual near the lift at all times. Make sure that ALL USERS read and understand this manual.

BP BendPak
PROVIDING AUTOMOTIVE SERVICE SOLUTIONS

1645 Lemonwood Dr.
Santa Paula, CA. 93060, USA
Toll Free 1-800-253-2393
Tel: 1-805-933-9970
Fax: 1-805-933-9160
www.bendpak.com

2. Vendor Information

| Approved Vendor | Vendor Part # | Contact # | Preferred Vendor |
|-----------------|---------------|-----------|------------------|
| 1) | | | |

PART SPECIFICATION FORM

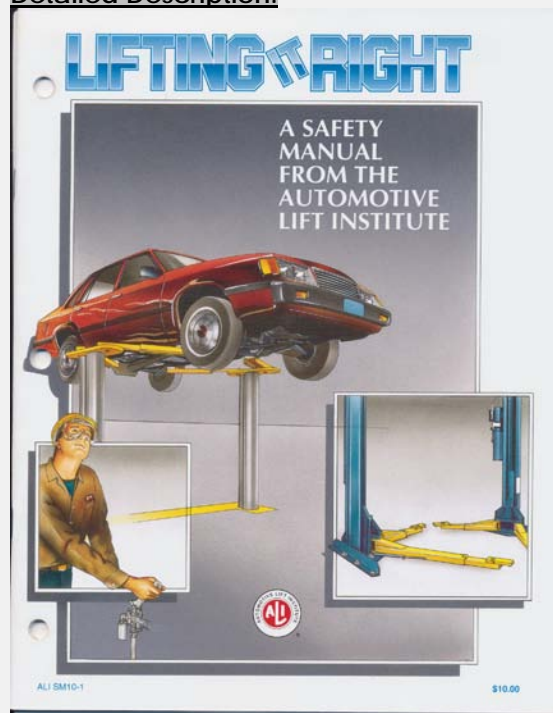
| | |
|-------------------------|-----------------------------|
| BENDPAK Number: | 5900147 |
| MRP Description: | SAFETY MANUAL ALI / SM 93-1 |
| Date: | 12/28/2010 |
| ECO : | 00431 |

1. Engineering Specification

Application:

ALI SAFETY MANUAL

Detailed Description:



2. Vendor Information

| Approved Vendor | Vendor Part # | Contact # | Preferred Vendor |
|-----------------|---------------|-----------|------------------|
| 1) | | | |

PART SPECIFICATION FORM

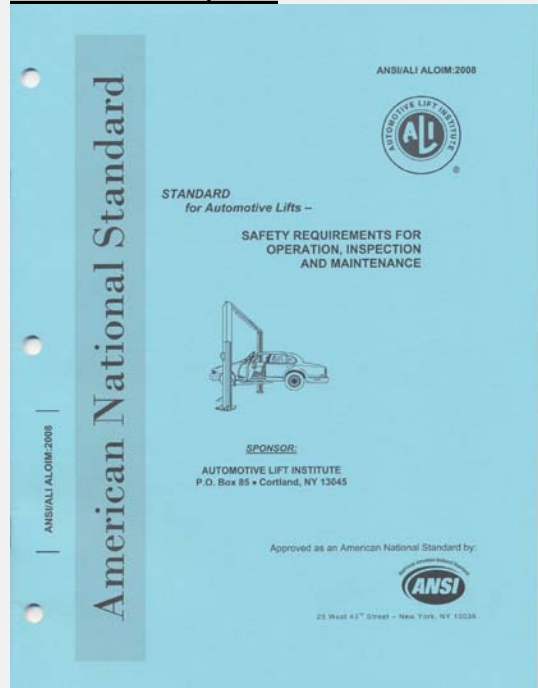
| | |
|-------------------------|--|
| BENDPAK Number: | 5900152 |
| MRP Description: | ALIGN OIM OPERATION INSPECTION & MAINTENANCE |
| Date: | 12/28/2010 |
| ECO : | 00431 |

1. Engineering Specification

Application:

ALI OPERATION INSPECTION & MAINTENANCE MANUAL

Detailed Description:



2. Vendor Information

| Approved Vendor | Vendor Part # | Contact # | Preferred Vendor |
|-----------------|---------------|-----------|------------------|
| 1) | | | |

PART SPECIFICATION FORM

| | |
|-------------------------|--------------------|
| BENDPAK Number: | 5905103 |
| MRP Description: | WARNING ALI/WL 200 |
| Date: | 05/06/2013 |
| ECO : | 00593 |

1. Engineering Specification

Application:

ALI 4 POST SAFETY STICKER KIT

Detailed Description:



SIZE: 11" L x 8.5" W (279mm x 216mm)

2. Vendor Information

| Approved Vendor | Vendor Part # | Contact # | Preferred Vendor |
|-----------------|---------------|-----------|------------------|
| 1) | | | |

PART SPECIFICATION FORM

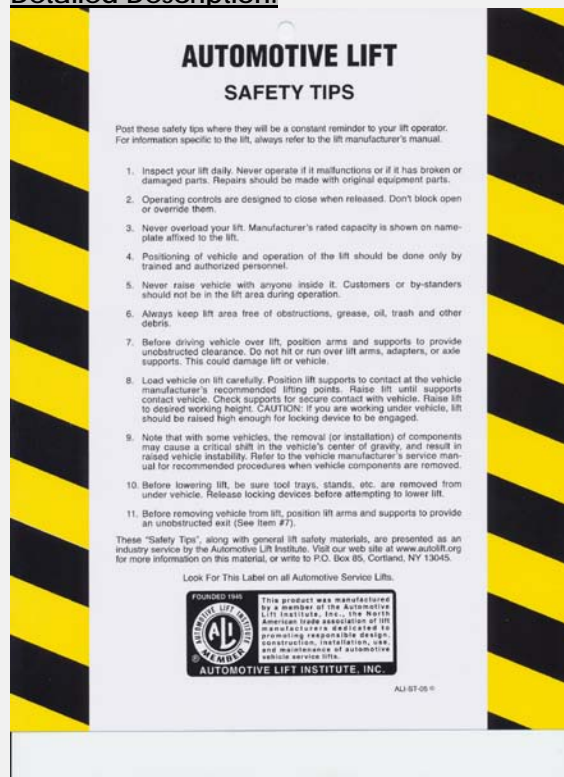
| | |
|-------------------------|----------------------------|
| BENDPAK Number: | 5905151 |
| MRP Description: | SAFETY TIPS CARD ALI-ST 90 |
| Date: | 12/28/2010 |
| ECO : | 00431 |

1. Engineering Specification

Application:

ALI SAFETY TIPS

Detailed Description:



2. Vendor Information

| Approved Vendor | Vendor Part # | Contact # | Preferred Vendor |
|-----------------|---------------|-----------|------------------|
| 1) | | | |

PART SPECIFICATION FORM

| | |
|-------------------------|----------------------------------|
| BENDPAK Number: | 5905311 |
| MRP Description: | BENDPAK LABEL; 4 x 38" WHITE INK |
| Date: | 05/13/2015 |
| ECO : | 00689 |

1. Engineering Specification

Application:

BENDPAK LABEL

Detailed Description:



SIZE: 38" L x 4.25" W (965mm x 108mm)

- Material: Yellow Represents Clear Adhesive PET
- Size: 4.25"W x 38"H
- Thickness: 4 Mil
- Finish: Polished
- Ink: U.V. protected, Opaque White
- Print Process: Silk Screen, 85 line-screen (Opaque White ink, clear adhesive PET will fill in blank areas.)
- Lamination: Clear-gloss over-laminate for abrasion, chemical, and ultra violet protection

2. Vendor Information

| Approved Vendor | Vendor Part # | Contact # | Preferred Vendor |
|-----------------|---------------|-----------|------------------|
| 1) | | | |

B

E

N

D

P

A

K

BendPak

ABOVE-GROUND LIFTS



BendPak®
PROVIDING AUTOMOTIVE SERVICE SOLUTIONS



1645 Lemonwood Drive
Santa Paula, CA 93060
U.S.A.
(805) 933-9970
www.bendpak.com

P/N 5905311

PART SPECIFICATION FORM

| | |
|------------------|-------------------|
| BENDPAK Number: | 5905402 |
| MRP Description: | MAX CAP DANGER 9K |
| Date: | 05/06/2013 |
| ECO : | 00593 |

1. Engineering Specification

Application:

LIFT CAPACITY STICKER

Detailed Description:



SIZE: 5" L x 4" W (127mm x 100mm)

P/N 5905402

2. Vendor Information

| Approved Vendor | Vendor Part # | Contact # | Preferred Vendor |
|-----------------|---------------|-----------|------------------|
| 1) | | | |

DANGER

THE MAXIMUM LIFTING CAPACITY FOR THIS LIFT IS DESCRIBED BELOW

Maximum Lifting Capacity

9000 lbs. / 4082 kg

Max. Lifting Cap. / Front of Lift Center

4500 lbs. / 2041 kg

Max. Lifting Cap. / Rear of Lift Center

4500 lbs. / 2041 kg

Exceeding the weight capacity of this lift can damage lift and/or property and may cause personal harm, injury or death to operators and/or bystanders. All vehicles MUST be positioned on lift with CENTER OF GRAVITY midway between adapters and/or centered on runways. Damage to lift due to overloading or misuse IS NOT covered under warranty.

PART SPECIFICATION FORM

| | |
|-------------------------|--------------------|
| BENDPAK Number: | 5905465 |
| MRP Description: | MANUFACTURER LABEL |
| Date: | 05/07/2013 |
| ECO : | 00593 |

1. Engineering Specification

Application:

MANUFACTURER LABEL

Detailed Description:

MFD. BY BENDPAK INC.

LIFT TYPE: SURFACE MOUNT CAPACITY: MED/HVY DTY
 POWER: ELECTRIC/HYDRAULIC ANCHORS: AS EQUIPPED
 INSTALLATION - SEE OWNERS GUIDE OR CONTACT FACTORY

SHIPPING DAMAGE CLAIMS

WHEN THIS EQUIPMENT IS SHIPPED, TITLE PASSES TO THE PURCHASER UPON RECEIPT FROM THE CARRIER. CONSEQUENTLY, CLAIMS FOR THE MATERIAL DAMAGED IN SHIPMENT MUST BE MADE BY THE PURCHASER AGAINST THE TRANSPORTATION COMPANY AT THE TIME SHIPMENT IS RECEIVED.

PLEASE READ ALL OPERATORS/USERS MANUAL(S) PRIOR TO INSTALLATION AND OPERATION. UNDERSTAND AND COMPREHEND THE FULL CONTENTS OF EACH MANUAL(S) PRIOR TO INSTALLATION AND OPERATION. DELIVER THE MANUAL(S) TO ALL OPERATORS. FAILURE TO OPERATE THIS EQUIPMENT AS DIRECTED MAY CAUSE INJURY OR DEATH.

IMPORTANT NOTE:

BENDPAK LIFTS ARE SUPPLIED WITH CONCRETE FASTENERS MEETING THE CRITERIA AS PRESCRIBED BY ASTM E488 - 96(2003). LIFT BUYERS ARE RESPONSIBLE FOR ANY SPECIAL REGIONAL STRUCTURAL AND/OR SEISMIC ANCHORING REQUIREMENTS SPECIFIED BY ANY OTHER AGENCIES AND/OR CODES SUCH AS THE UNIFORM BUILDING CODE (UBC) AND/OR INTERNATIONAL BUILDING CODE (IBC).



INTERNAL BAR CODE - FOR FACTORY AUDIT ONLY 34086

| | | | | |
|-----|-------|--------|--------|--------------|
| BPK | STYOT | P20KVR | X18576 | HVY DTY/ GVR |
| | | | | 832 |

THE MANUFACTURE, USE, SALE OR IMPORT OF THIS PRODUCT MAY BE SUBJECT TO ONE OR MORE UNITED STATES PATENTS, OR PENDING APPLICATIONS, OWNED BY BENDPAK, INC.

ENGINEERED BY BENDPAK INC USA

MADE IN CHINA

SIZE: 5.125" L x 5.125" W (130mm x 130mm)

2. Vendor Information

| Approved Vendor | Vendor Part # | Contact # | Preferred Vendor |
|-----------------|---------------|-----------|------------------|
| 1) | | | |

MFD. BY BENDPAK INC.

LIFT TYPE: SURFACE MOUNT CAPACITY: MED/HVY DTY

POWER: ELECTRIC/HYDRAULIC ANCHORS: AS EQUIPPED

INSTALLATION - SEE OWNERS GUIDE OR CONTACT FACTORY

SHIPPING DAMAGE CLAIMS

WHEN THIS EQUIPMENT IS SHIPPED, TITLE PASSES TO THE PURCHASER UPON RECEIPT FROM THE CARRIER. CONSEQUENTLY, CLAIMS FOR THE MATERIAL DAMAGED IN SHIPMENT MUST BE MADE BY THE PURCHASER AGAINST THE TRANSPORTATION COMPANY AT THE TIME SHIPMENT IS RECEIVED.

PLEASE READ ALL OPERATORS/USERS MANUAL(S) PRIOR TO INSTALLATION AND OPERATION. UNDERSTAND AND COMPREHEND THE FULL CONTENTS OF EACH MANUAL(S) PRIOR TO INSTALLATION AND OPERATION. DELIVER THE MANUAL(S) TO ALL OPERATORS. FAILURE TO OPERATE THIS EQUIPMENT AS DIRECTED MAY CAUSE INJURY OR DEATH.

IMPORTANT NOTE:

BENDPAK LIFTS ARE SUPPLIED WITH CONCRETE FASTENERS MEETING THE CRITERIA AS PRESCRIBED BY ASTM E488 - 96(2003). LIFT BUYERS ARE RESPONSIBLE FOR ANY SPECIAL REGIONAL STRUCTURAL AND/OR SEISMIC ANCHORING REQUIREMENTS SPECIFIED BY ANY OTHER AGENCIES AND/OR CODES SUCH AS THE UNIFORM BUILDING CODE (UBC) AND/OR INTERNATIONAL BUILDING CODE (IBC).



INTERNAL BAR CODE - FOR FACTORY AUDIT ONLY 34086

| | | | | |
|-----|-------|--------|--------|---------------------|
| BPK | STYOT | P20KVR | X18576 | HVY DTY/ GVR 832 |
|-----|-------|--------|--------|---------------------|

THE MANUFACTURE, USE, SALE OR IMPORT OF THIS PRODUCT MAY BE SUBJECT TO ONE OR MORE UNITED STATES PATENTS, OR PENDING APPLICATIONS, OWNED BY BENDPAK, INC.

ENGINEERED BY BENDPAK INC USA

MADE IN CHINA

PART SPECIFICATION FORM

| | |
|------------------|---------------------|
| BENDPAK Number: | 5905556 |
| MRP Description: | 4-POST SAFETY DECAL |
| Date: | 05/06/2013 |
| ECO : | 00593 |

1. Engineering Specification

Application:

4-POST SAFETY DECAL

Detailed Description:



SIZE: 23" L x 4" W (584mm x 100mm)

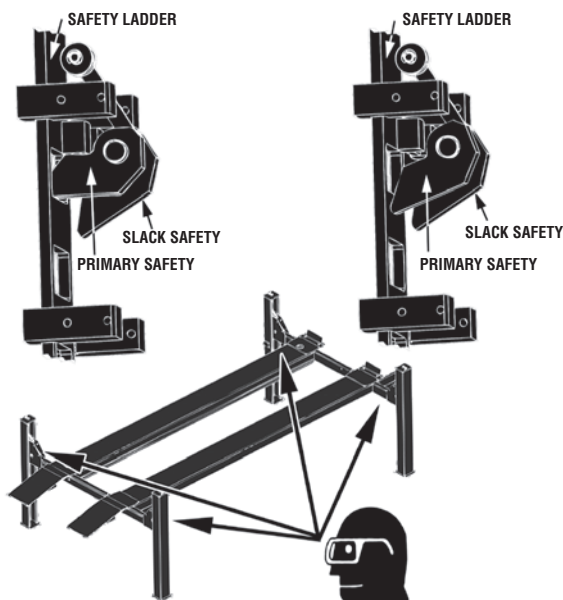
2. Vendor Information

| Approved Vendor | Vendor Part # | Contact # | Preferred Vendor |
|-----------------|---------------|-----------|------------------|
| 1) | | | |

! DANGER

**SAFETY LOCKS ENGAGED
– OK TO PROCEED –**

**SAFETY LOCK NOT ENGAGED
– REMAIN CLEAR –**



VISUALLY CONFIRM THAT ALL PRIMARY SAFETY LOCKS ARE ENGAGED BEFORE ENTERING WORK AREA.

Suspension components used on this lift are intended to raise and lower lift only and are NOT meant to be load-holding devices. Remain clear of elevated lift unless visual confirmation is made that all primary safety locks are fully engaged and the lift is LOWERED onto the safety locks. Refer to installation/operation manual for proper safety lock procedures and/or further instruction.

! WARNING

WIRE ROPE INSPECTION AND MAINTENANCE

- Lifting cables should be replaced every (3) three years or when visible signs of damage are apparent. DO NOT USE LIFT WITH DEFECTIVE OR WORN CABLES.
- Wire rope should be maintained in a well-lubricated condition at all times. Wire rope is only fully protected when each wire strand is lubricated both internal and external. Excessive wear will shorten the life of the wire rope. The factory suggests wire rope lubricant that penetrates to the core of the rope and provides long-term lubrication between each individual strand. In order to make sure that the inner layers of the rope remain well lubricated, lubrication should be carried out at intervals not exceeding three (3) months during operation.
- All sheaves and guide rollers in contact with the moving wire rope should be given regular visual checks for surface wear and lubricated to make sure that they run freely. This operation should be carried out at appropriate intervals generally not exceeding three (3) months during operation. For all sheave axles, the factory recommends standard wheel bearing grease. For all sheaves and/or guide rollers, the factory recommends 90-WT gear oil or similar heavy lubricant applied by any method including pump/spray dispensing, brush, hand and/or swabbing.

Failure to read, understand and follow these instructions may cause death or serious injury. Read and understand these instructions before using lift.

IMPORTANT OPERATION / MAINTENANCE INSTRUCTIONS - PLEASE READ

TO RAISE LIFT

- ✓ Position vehicle tires at the center of each runway.
- ✓ Set parking brake or use wheel chock to hold vehicle in position.
- ✓ Before raising vehicle, be sure all personnel are clear of lift and surrounding area. Pay careful attention to overhead clearances.
- ✓ Raise lift to desired height by pressing push button on power unit.
- ✓ Maintain visual contact with vehicle and surrounding area at all times while lowering lift.
- ✓ **STOP IMMEDIATELY** if load shifts or becomes unlevel.
- ✓ After vehicle is raised to desired height, lower lift onto the nearest safety lock. Do not allow cables to become excessively slack.
- ✓ **ALWAYS INSURE ALL PRIMARY SAFETY LOCKS ARE ENGAGED** before entering work area.

TO LOWER LIFT

- ✓ Before lowering vehicle, be sure all personnel, tools and equipment are clear of lift and surrounding area.
- ✓ Raise lift by pressing **RAISE BUTTON** on power unit. Elevate lift at least two inches to allow adequate clearance for locks to clear.
- ✓ Press push button **AIR SAFETY VALVE** and **HOLD**.
- ✓ Lower vehicle by pressing power unit lowering handle until lift has descended completely.
- ✓ When lowering lift **PAY CAREFUL ATTENTION** that all personnel and objects are kept clear.
- ✓ **ALWAYS** keep a visual line of site on lift **AT ALL TIMES**.
- ✓ **ALWAYS** make sure that **ALL LOCKS** are disengaged. If one of the locks inadvertently engages on descent, lift and/or vehicle may disrupt causing personal injury or death.

REQUIRED MONTHLY MAINTENANCE

- ✓ **ALWAYS** consult operation manual for factory recommended maintenance.
- ✓ Adjust lift cables to ensure lift raises level and safety locks engage simultaneously.
- ✓ Check all chain/cable connections, bolts and pins to insure proper mounting.
- ✓ Visually inspect safety locks for proper operation.
- ✓ Visually inspect concrete floor. **DO NOT USE LIFT** if concrete foundation shows signs of deterioration.
- ✓ Inspect all anchor bolts and retighten if necessary.
- ✓ Check columns for squareness and plumb.
- ✓ Inspect all bolts and/or fasteners making sure they are properly secured.
- ✓ Make a visual inspection of **ALL MOVING PARTS** and check for excessive signs of wear.
- ✓ Replace **ALL FAULTY PARTS** before lift is put back into operation.

! WARNING

1. **WARNING:** If cement anchor bolts are loose, or any component of the lift is found to be defective, **DO NOT USE LIFT!**
2. Never operate the lift with any person or equipment below.
3. Never exceed rated capacity.
4. Always insure safety locks are engaged before any attempt is made to work on or near vehicle.
5. Never leave lift in an elevated position unless the safety locks are engaged.
6. Do not permit electric motor to get wet! Motor damage caused by dampness is not covered under warranty.

PART SPECIFICATION FORM


| | |
|-------------------------|--------------------|
| BENDPAK Number: | 5905940 |
| MRP Description: | PRODUCT DATA LABEL |
| Date: | 05/06/2013 |
| ECO : | 00593 |

1. Engineering Specification

Application:

PRODUCT DATA LABEL

Detailed Description:



SANTA PAULA, CA USA
 WWW.BENDPAK.COM

LIFT TYPE: SURFACE MOUNT CAP: MED/HVY DTY MFG. BPK SEE DATA PLATE FOR PRODUCT DETAILS
 POWER: ELECTRIC/HYDRAULIC INSTALLATION - SEE OWNERS GUIDE OR CONTACT FACTORY

SAFETY INSTRUCTIONS: IF ATTACHMENTS, ACCESSORIES OR CONFIGURATION MODIFYING COMPONENTS THAT ARE LOCATED IN THE LOAD PATH, AFFECT OPERATION OF THE LIFT, AFFECT THE LIFT ELECTRICAL LISTING OR AFFECT INTENDED VEHICLE ACCOMMODATION ARE USED ON THIS LIFT AND, IF THEY ARE NOT CERTIFIED FOR USE ON THIS LIFT, THEN THE CERTIFICATION OF THIS LIFT SHALL BECOME NULL AND VOID. CONTACT THE PARTICIPANT FOR INFORMATION PERTAINING TO CERTIFIED ATTACHMENTS, ACCESSORIES OR CONFIGURATION MODIFYING COMPONENTS.

BENDPAK LIFTS ARE SUPPLIED WITH CONCRETE FASTENERS MEETING THE CRITERIA AS PRESCRIBED BY ASTM E488 - 96(2003). LIFT BUYERS ARE RESPONSIBLE FOR ANY SPECIAL REGIONAL STRUCTURAL AND/OR SEISMIC ANCHORING REQUIREMENTS SPECIFIED BY ANY OTHER AGENCIES AND/OR CODES SUCH AS THE UNIFORM BUILDING CODE (UBC) AND/OR INTERNATIONAL BUILDING CODE (IBC).

THE MANUFACTURE, USE, SALE OR IMPORT OF THIS PRODUCT MAY BE SUBJECT TO ONE OR MORE UNITED STATES PATENTS, OR PENDING APPLICATIONS, OWNED BY BENDPAK, INC.
 DO NOT REMOVE ENGINEERED BY BENDPAK INC. USA MADE IN CHINA

SIZE: 2.3" L x 4.5" W (58mm x 114mm)

2. Vendor Information

| Approved Vendor | Vendor Part # | Contact # | Preferred Vendor |
|-----------------|---------------|-----------|------------------|
| 1) | | | |



SANTA PAULA, CA USA

WWW.BENDPAK.COM

PN 5905940

LIFT TYPE: SURFACE MOUNT CAP: MED/HVY DTY MFG. BPK SEE DATA PLATE FOR PRODUCT DETAILS

POWER: ELECTRIC/HYDRAULIC

INSTALLATION - SEE OWNERS GUIDE OR CONTACT FACTORY

SAFETY INSTRUCTIONS: IF ATTACHMENTS, ACCESSORIES OR CONFIGURATION MODIFYING COMPONENTS THAT ARE LOCATED IN THE LOAD PATH, AFFECT OPERATION OF THE LIFT, AFFECT THE LIFT ELECTRICAL LISTING OR AFFECT INTENDED VEHICLE ACCOMMODATION ARE USED ON THIS LIFT AND, IF THEY ARE NOT CERTIFIED FOR USE ON THIS LIFT, THEN THE CERTIFICATION OF THIS LIFT SHALL BECOME NULL AND VOID. CONTACT THE PARTICIPANT FOR INFORMATION PERTAINING TO CERTIFIED ATTACHMENTS, ACCESSORIES OR CONFIGURATION MODIFYING COMPONENTS.

BENDPAK LIFTS ARE SUPPLIED WITH CONCRETE FASTENERS MEETING THE CRITERIA AS PRESCRIBED BY ASTM E488 - 96(2003). LIFT BUYERS ARE RESPONSIBLE FOR ANY SPECIAL REGIONAL STRUCTURAL AND/OR SEISMIC ANCHORING REQUIREMENTS SPECIFIED BY ANY OTHER AGENCIES AND/OR CODES SUCH AS THE UNIFORM BUILDING CODE (UBC) AND/OR INTERNATIONAL BUILDING CODE (IBC).

THE MANUFACTURE, USE, SALE OR IMPORT OF THIS PRODUCT MAY BE SUBJECT TO ONE OR MORE UNITED STATES PATENTS, OR PENDING APPLICATIONS, OWNED BY BENDPAK, INC.

DO NOT REMOVE

ENGINEERED BY BENDPAK INC. USA

MADE IN CHINA

PART SPECIFICATION FORM

| | |
|-------------------------|---------------------------|
| BENDPAK Number: | 5905953 |
| MRP Description: | LABEL D (4-POST LIFTS CE) |
| Date: | 12/04/2015 |
| ECO : | 00724 |

1. Engineering Specification

Application:

DATA SERIAL TAG, 4-POST LIFTS, CE

Detailed Description:



BendPak Santa Paula, CA USA
www.bendpak.com

| | |
|-----------------------|---------------|
| MODEL NUMBER | SERIAL NUMBER |
| | |
| LIFT CAPACITY | DATE OF MFG. |
| | |
| ROLLING JACK MAX CAP. | MAX PSI / BAR |
| | |

VOLTAGE

☐ 110-240VAC, 50-60 Hz, 1 Ph
 ☐ 208-440VAC, 50-60 Hz, 3 Ph
☐ 208-240VAC, 50-60 Hz, 1 Ph
 ☐ 208-440VAC, 50-60 Hz, 3 Ph

DANGER!
Disconnect Power
Before Servicing

CE ENE PM 5905953

SIZE: 3.38" L x 3.38" W
(85.7mm x 85.7mm)

2. Vendor Information (Or for Reference)

| Approved Vendor | Vendor Part # | Contact # | Preferred Vendor |
|--|---------------|-----------|------------------|
| 1) | | | |
| 2) | | | |
| OR BENDPAK ENGINEERING APPROVED EQUIVALENT | | | |



Santa Paula, CA USA
www.bendpak.com

MODEL NUMBER

SERIAL NUMBER

LIFT CAPACITY

DESCRIPTION

ROLLING JACK MAX CAP.

MAX PSI / BAR

VOLTAGE

☐ 110-240VAC, 50-60 Hz, 1 Ph

☐ 380-415VAC, 50-60 Hz, 3 Ph

☐ 208-240VAC, 50-60 Hz, 1 Ph

☐ 208-440VAC, 50-60 Hz, 3 Ph

DATE OF MFG.



DANGER!

Disconnect Power
Before Servicing

WARRANTY VOID IF DATA PLATE IS REMOVED



PN 5905953



2016
CE-Approved
4 Post Lifts
Colors & Graphics

4/7/16

CONFIDENTIAL INFORMATION.

You may not disclose, print, copy or disseminate this information.
Unauthorized use is a violation of federal criminal law.

4 Post Lifts Product Decal Positioning

A



Total of 4

PN 5905311

BPK Post Branding Decal-Large_5905311.pdf:

Material: Clear Adhesive PET

Size: 4.25"W x 38"H

Thickness: 4 Mil

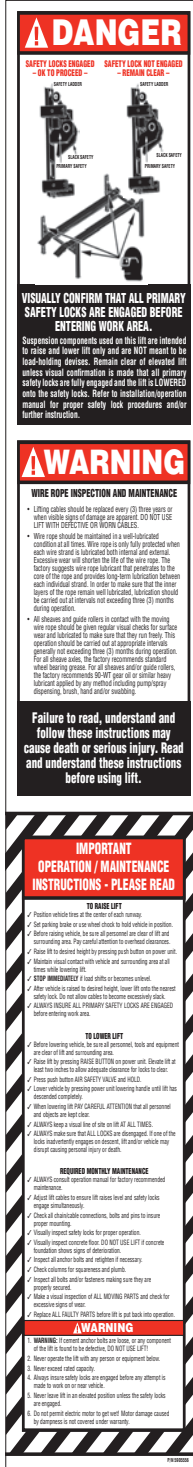
Finish: Polished

Ink: U.V. protected, Opaque White

Print Process: Silk Screen, 85 line-screen (Yellow color in file represents what should be clear PET material and SHOULD NOT print as Yellow ink. White area in file represents Opaque White ink.)

Lamination: Clear-gloss over-laminate for abrasion, chemical, and ultra violet protection

B



PN 5905556

4_Post_Safety_Decal.pdf:

Size: 4"W x 23"H

Material: White Vinyl Pressure Sensitive Adhesive

Thickness: 4 Mil

Ink: U.V. protected CMYK 2/C Process

Finish: Polished

Print Process: Offset Lithography - 200 line-screen or 300 p.p.i. for digital

Lamination: Clear-gloss over-laminate for abrasion, chemical, and ultra violet protection

C

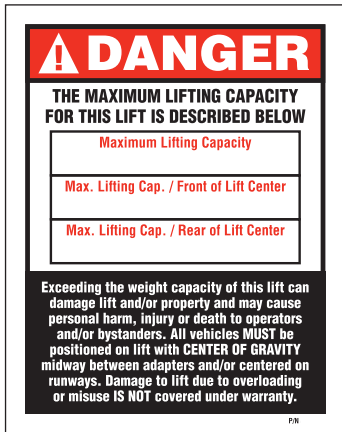


Ali_4_Post_labels.pdf:

(Order Labels from ALI)

4 Post Lifts Product Decal Positioning

***D**



P/N 5905401 - Max Cap. Danger 7k
P/N 5905695 - Max. Cap. Danger 7500
P/N 5905402 - Max Cap. Danger 9k
P/N 5905557 - Max. Cap. Danger 14K
P/N 5905406 - Max Cap. Danger 18k
P/N 5905407 - Max. Cap. Danger 27K
P/N 5905408 - Max. Cap. Danger 35K
P/N 5905409 - Max. Cap. Danger 40K

***Max. Cap. Danger.pdf:**

Size: 4"W x 5"H

Material: White Vinyl Pressure Sensitive Adhesive

Thickness: 4 Mil

Ink: U.V. protected CMYK 2/C Process

Finish: Polished

Print Process: Offset Lithography - 200 line-screen or 300 p.i. for digital

Lamination: Clear-gloss over-laminate for abrasion, chemical, and ultra violet protection

***E**



P/N 5905645 - NRTL_Lifting_Cap_Label_7K
P/N 5905700 - NRTL_Lifting_Cap_Label_7500
P/N 5905650 - NRTL_Lifting_Cap_Label_9k
P/N 5905665 - NRTL_Lifting_Cap_Label_14k
P/N 5905675 - NRTL_Lifting_Cap_Label_18k
P/N 5905680 - NRTL_Lifting_Cap_Label_27k
P/N 5905685 - NRTL_Lifting_Cap_Label_35K
P/N 5905690 - NRTL_Lifting_Cap_Label_40K

***NRTL_Lifting_Cap_Label_.pdf:**

Size: 4.5"W x 3.25"H

Material: White Vinyl Pressure Sensitive Adhesive

Thickness: 4 Mil

Ink: U.V. protected CMYK 2/C Process

Finish: Polished

Print Process: Offset Lithography - 200 line-screen or 300 p.i. for digital

Lamination: Clear-gloss over-laminate for abrasion, chemical, and ultra violet protection

***DEPENDS ON LIFT MODEL AND CAPACITY**

F



PN 5905940

Product_Data_Label_5905940-New.pdf:

Size: 4.5"W x 2.3"H

Material: White Vinyl Pressure Sensitive Adhesive

Thickness: 4 Mil

Ink: U.V. protected CMYK 2/C Process

Finish: Polished

Print Process: Offset Lithography - 200 line-screen or 300 p.i. for digital

Lamination: Clear-gloss over-laminate for abrasion, chemical, and ultra violet protection

G



PN 5905953

2015_Serial_Tag-D-5905953.jpg:

Size: 3"W x 3"H

Material: Material: 2 Mil. Matte Silver Polyester (Flex-PSE)

Print using thermal transfer printer with resin ribbon

Ink: 1 Color-Black

H



ALI-Gold-Label-5905326.jpg

****FOR ALI APPROVED LIFTS ONLY**

4 Post Lifts Product Decal Positioning

****FOR ALI APPROVED
LIFTS ONLY**

D, H, G, F

Front of Post
(Top to Bottom)

E, C

Back of Post
(Top to Bottom)

**Place 1.25" from top of
Power Unit bracket to
the bottom of ALI Label.**

B

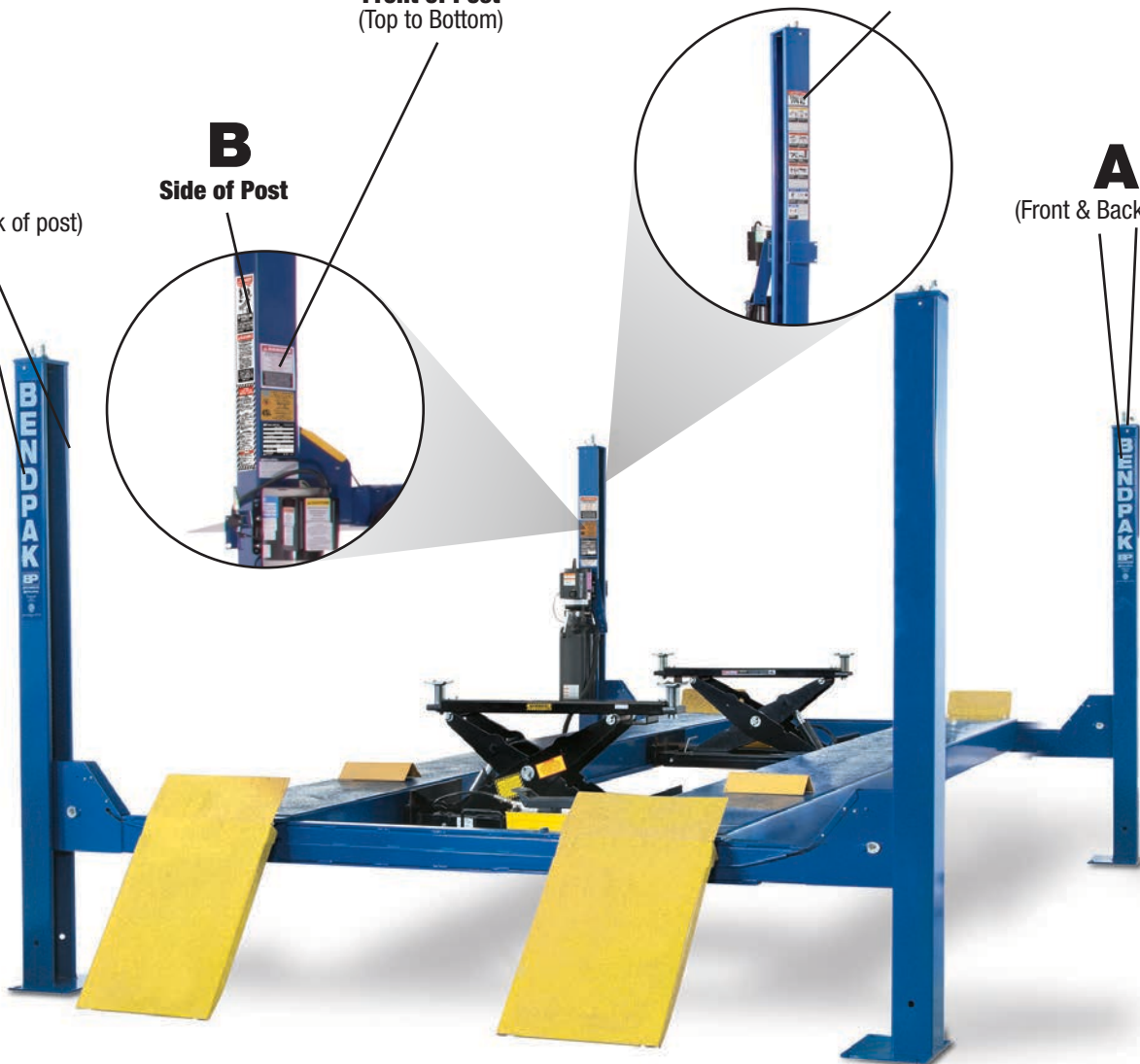
Side of Post

A

(Front & Back of post)

A

(Front & Back of post)



4 Post Lifts Packaging

| | |
|---|----------------------|
| BP BendPak. Santa Paula, CA USA www.bendpak.com | |
| MODEL NUMBER | SERIAL NUMBER |
| | |
| | |
| PN 5905285 | |

Serial_Tag_New-2015_Peel_Off-5905285.jpg:

Size: 3"W x 3"H

Material: 2 Mil. Matte Silver Polyester (Flex-PSE)

Print using thermal transfer printer with resin ribbon

Ink: 1 Color-Black

| | |
|---------------------------------|----------------------|
| PEEL OFF INVENTORY LABEL | |
| MODEL NUMBER | SERIAL NUMBER |
| | |
| PN 5905285 | |

Do not remove back sheet of this portion to prevent from sticking completely as shown in image.



MFD. BY BENDPAK INC.

LIFT TYPE: SURFACE MOUNT CAPACITY: MED/HVY DTY

POWER: ELECTRIC/HYDRAULIC ANCHORS: AS EQUIPPED

INSTALLATION - SEE OWNERS GUIDE OR CONTACT FACTORY

SHIPPING DAMAGE CLAIMS

WHEN THIS EQUIPMENT IS SHIPPED, TITLE PASSES TO THE PURCHASER UPON RECEIPT FROM THE CARRIER. CONSEQUENTLY, CLAIMS FOR THE MATERIAL DAMAGED IN SHIPMENT MUST BE MADE BY THE PURCHASER AGAINST THE TRANSPORTATION COMPANY AT THE TIME SHIPMENT IS RECEIVED.

PLEASE READ ALL OPERATORS/USERS MANUAL(S) PRIOR TO INSTALLATION AND OPERATION. UNDERSTAND AND COMPREHEND THE FULL CONTENTS OF EACH MANUAL(S) PRIOR TO INSTALLATION AND OPERATION. DELIVER THE MANUAL(S) TO ALL OPERATORS. FAILURE TO OPERATE THIS EQUIPMENT AS DIRECTED MAY CAUSE INJURY OR DEATH.

IMPORTANT NOTE:

BENDPAK LIFTS ARE SUPPLIED WITH CONCRETE FASTENERS MEETING THE CRITERIA AS PRESCRIBED BY ASTM E488 - 96(2003). LIFT BUYERS ARE RESPONSIBLE FOR ANY SPECIAL REGIONAL STRUCTURAL AND/OR SEISMIC ANCHORING REQUIREMENTS SPECIFIED BY ANY OTHER AGENCIES AND/OR CODES SUCH AS THE UNIFORM BUILDING CODE (UBC) AND/OR INTERNATIONAL BUILDING CODE (IBC).



INTERNAL BAR CODE - FOR FACTORY AUDIT ONLY 34086

BPK | STYOT | P20KVR | X18576 | HVY DTY/ GVR

THE MANUFACTURE, USE, SALE OR IMPORT OF THIS PRODUCT MAY BE SUBJECT TO ONE OR MORE UNITED STATES PATENTS, OR PENDING APPLICATIONS, OWNED BY BENDPAK, INC.

ENGINEERED BY BENDPAK INC USA

MADE IN CHINA

Manufacturer Packaging Label:

Size: 5"W x 5"H

Material: White adhesive paper

Ink: U.V. protected CMYK 2/C Process

Print Process: Offset Lithography - 200 line-screen or 300 p.p.i. for digital