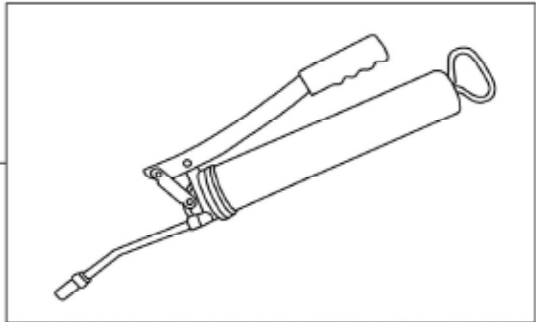
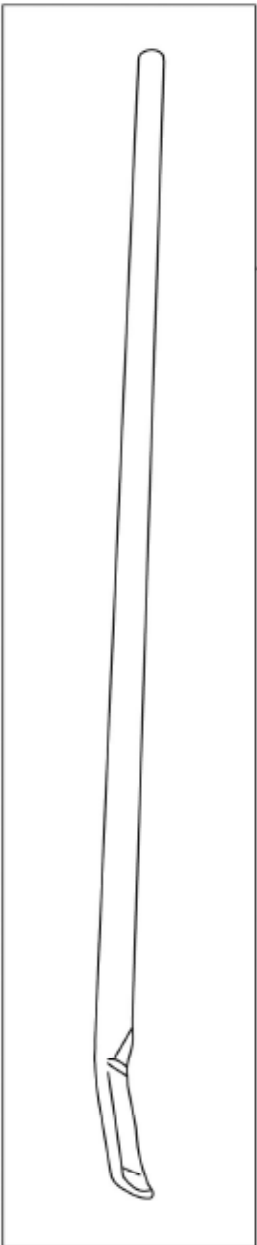


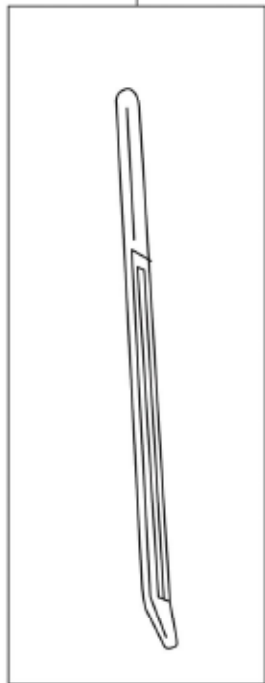
701



704



703

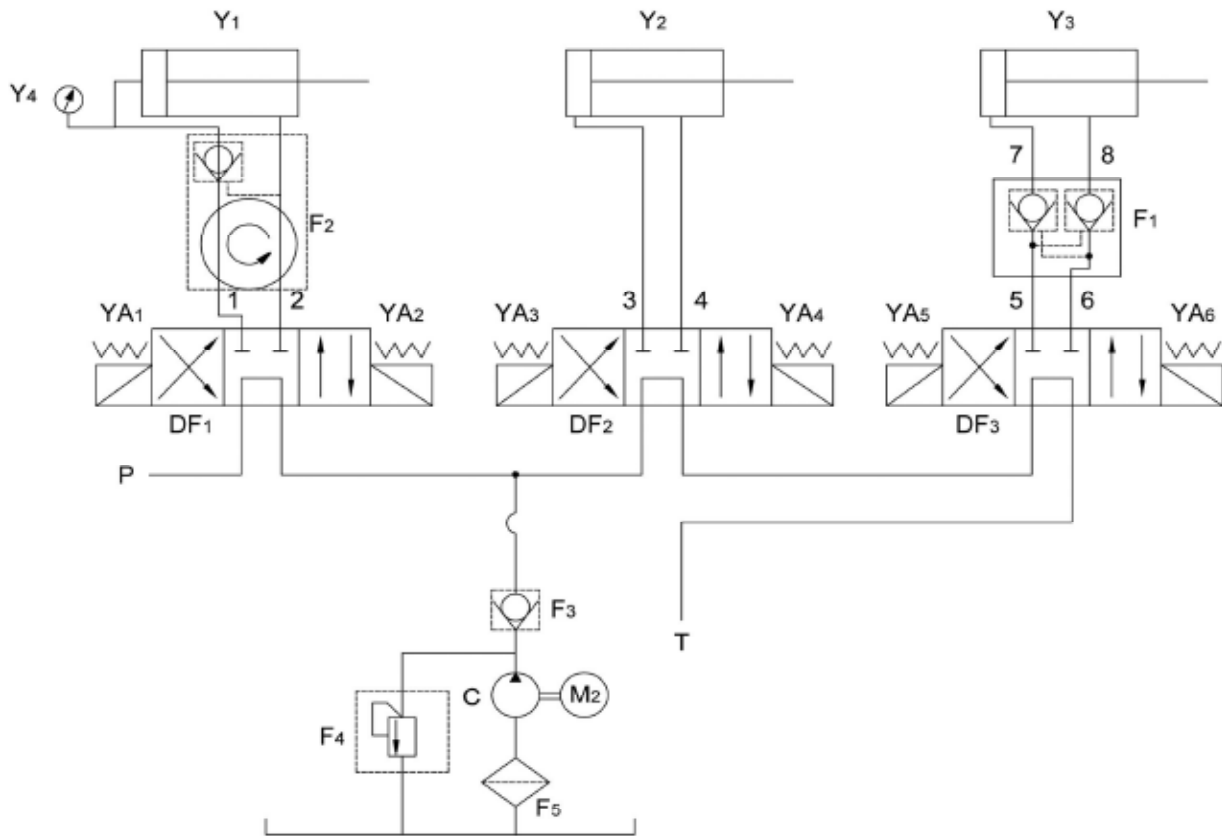


702

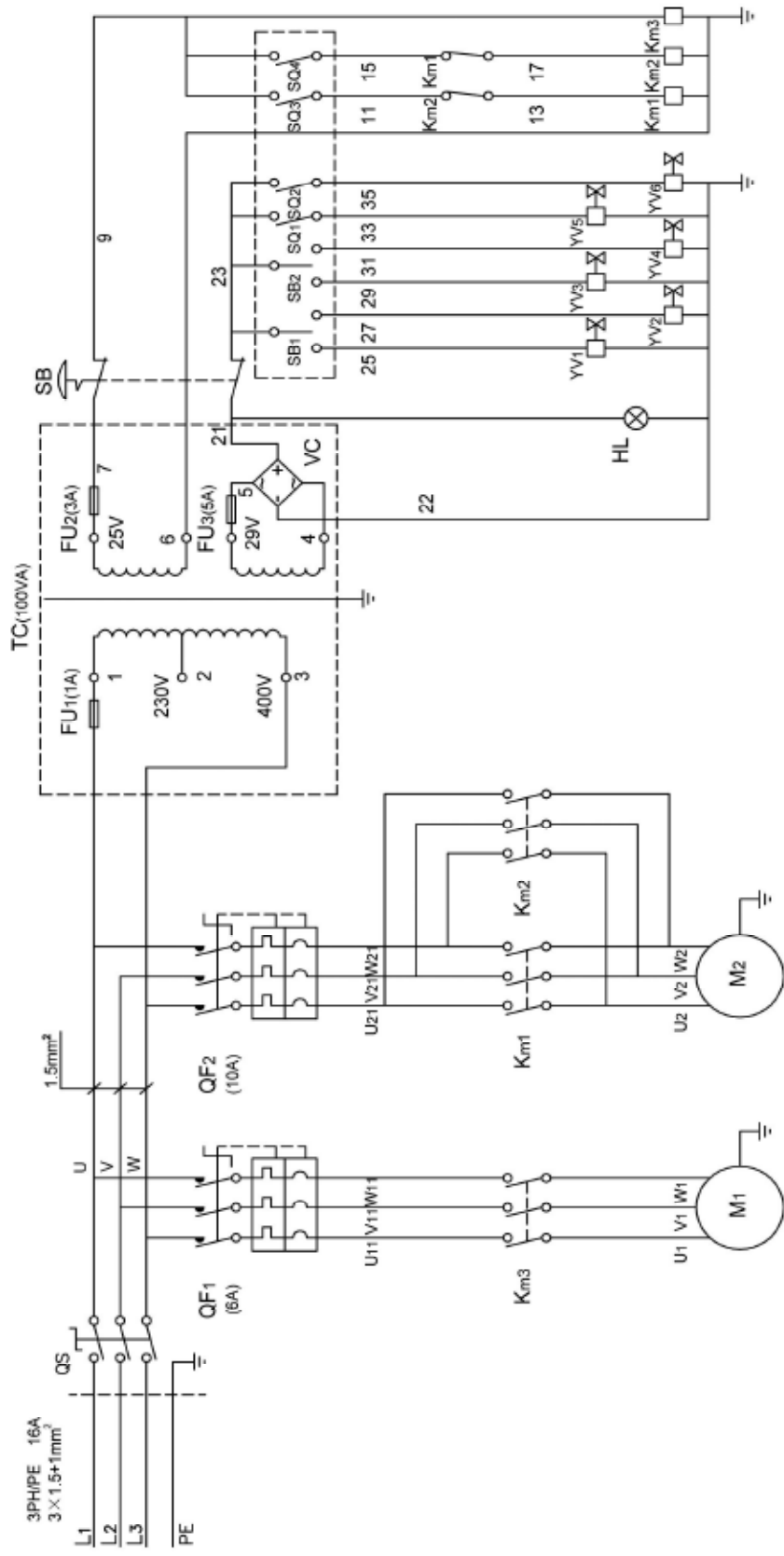
Item #	DESCRIPTION		
1	Electrical Box Lid; R26FLT	121	Screw M8X45
2	Electrical Box; R26FLT	122	Arm Release Lever Spring; R26FLT
3	L/R Cylinder Long Pin; R26FLT	123	Arm Release Lever Pivot Bolt; R26FLT
4	Screw M6X20	124	Nut M8
5	Nut M6	125	Screw M8X25
6	M24 Snap Ring	126	Tool Head Arm; R26FLT
7	NA	127	Screw M10X20
8	Up/Down Arm; R26FLT	128	Washer Φ10.5
9	Nut M10	129	Washer Φ8
10	Lifting Arm Cover; R26FLT	130	Screw M10X30
11	Washer Φ5X16X135	131	Slideing Carriage Assembly; R26FLT
12	Zerk Fitting	132	Slideing Carriage Guide; R26FLT
13	Left/Right Cylinder Shaft; R26FLT	133	Screw M10X30 (70)
14	Up/Down Cylinder Shaft; R26FLT	134	Screw M10X70 (70)
15	Washer	135	Screw M12X12
16	Up/Down Arm Pin; R26FLT	136	Screw M8X20
17	Washer Φ8	137	Nut M16
18	Screw M8X12	138	Tire Ramp Roller; R26FLT
19	Left/Right Cylinder Cover; R26FLT	139	Screw M16X90
20	O-Ring Φ20x2.4	140	Tool Head Arm Ejector; R26FLT
21	Up/Down Cylinder Piston; R26FLT	141	Tool Head Arm Ejector Spring; R26FLT
22	Screw M6X10	142	Tool Head Arm Guide; R26FLT
23	Main Body; R26FLT	143	Tool Head Arm Lock Spring; R26FLT
24	Left/Right Cylinder Short Pin; R26FLT	144	Tool Head Arm Lock Link; R26FLT
25	Dust Seal	145	Tool Head Arm Lock Cap; R26FLT
26	O-Ring Φ25x2.65	146	Tool Head Arm Lock Shaft; R26FLT
27	Ring Nut	147	Tool Head Arm Lock Bracket; R26FLT
28	O-Ring Φ60X3.1	148	Screw M6X25
29	Up/Down Cylinder Housing; R26FLT	149	Tire Ramp Assy; R26FLT
30	Left/Right Cylinder Housing; R26FLT	201	Jaw Clamp Cylinder Housing; R26FLT
31	Gasket for shaft YD50	202	Pressure Gauge; R26FLT
32	Self-locking nut M14	203	O-Ring Φ32X3.5
33	Washer	204	Gasket DAS 9575
34	Screw M6X16 (70)	205	Jaw Clamp Cylinder Piston; R26FLT
35	Zerk Fitting	206	Screw M8X25 (70)
36	Non-return Valve	207	Special Screw M18X1.5
37	Wheel Hose Φ8X10	208	Clamp Claw; R26FLT
38	Junction	209	Clamp Bracket; R26FLT
39	O-Ring Φ41.5X3.55	210	Self-Locking Nut M18
40	Gasket for shaft YD32	211	Self-Locking Nut M12
41	Up/Down Cylinder Pin; R26FLT	212	Special Screw M12
42	Coupling Φ8	213	Inner Jaw Clamp Link; R26FLT
43	Cover M14X1.5	214	Clamp Cylinder Connecting Link; R26FLT
44	Warning Stickers; R26FLT	215	M16 Snap Ring
101	Hook Bolt; R26FLT	216	Connecting Link Pin; R26FLT
102	Hook; R26FLT	217	Middle Jaw Clamp Link; R26FLT
103	Hook Return Spring; R26FLT	218	Right Outer Jaw Clamp Link; R26FLT
104	Tool Head Mounting Bracket; R26FLT	219	Left Outer Jaw Clamp Link; R26FLT
105	Nut M16X1.5	220	Long Special Screw M12
106	Bead Breaker Disk; R26FLT	221	Long Special Screw M18X1.5
107	Bead Breaker Disk Bolt; R26FLT	222	Left/Right Clamp Link Bushing; R26FLT
108	Hook Spring Bracket; R26FLT	223	Screw M6X10 (up)
109	Expansile Pin Φ8X60	224	Key 60X20X12
110	Self-Locking Nut M20X1.5	225	O-Ring 619
111	Expansile Pin Φ6X20	226	Nut M24X2
112	Expansile Pin Φ10X20	227	Protection Ring
113	Expansile Pin Φ8X30	228	Washer Φ75X91X0.5
114	Tool Head Lever Spring; R26FLT	229	Jaw Clamp Cylinder Shaft; R26FLT
115	Tool Head Lever; R26FLT	230	O-Ring Φ90X5.7
116	Tool Head Lever Link; R26FLT	231	Front Flange for Cylinder Φ95
117	Tool Head Lever Pin; R26FLT	232	O-Ring Φ87.5X3.55
118	Tool Head Arm Release Knob; R26FLT	233	O-Ring Φ34X3.1
119	Screw M8X45	234	Nylon Guide Ring
120	Tool Head Arm Release Lever; R26FLT	235	Seeger Ring Int. Φ50
		236	Gasket YD35
		237	O-Ring Φ20X2.4

238	Rotating Jaw Clamp Brk Assy; R26FLT	501	Electrical Box Door; R26FLT
239	Unilateralism Valve	502	Large Contactor; R26FLT
240	Washer JB982-77	503	On/Off Switch Knob; R26FLT
241	Fitting M14-M14 (Convex)	504	Circuit Breaker; R26FLT
242	Copper Washer M14.5	505	On/Off Switch; R26FLT
243	Fitting M14-M14 (Concave)	506	On/Off Light; R26FLT
244	Rotating Union Assembly; R26FLT	507	Electrical Box Latch; R26FLT
245	O-Ring Φ 31.5X2.65	508	Terminal Block
246	Washer Φ 35.9X31.5X1.5	509	Rectifier
249	Copper Hydraulic Line; R26FLT	510	Fuse
		511	Transformer
301	Motor Pulley; R26FLT		
302	Pully Cover; R26FLT		
303	Motor Belt; R26FLT	601	4 Position Control Switch Cover; R26FLT
304	Electric Motor; R26FLT	602	Screw
305	Screw M10X25	603	4 Position Control Switch; R26FLT
306	Motor Mounting Bracket; R26FLT	604	Emergency Stop Switch; R26FLT
307	Yoke End with Pin	605	Screw
308	Tie Bar	606	Open/Close Jaw Clamp Switch; R26FLT
309	Pully Cover Support; R26FLT	607	Washer
310	Gearbox Rear Cover; R26FLT	608	Emergency Switch Bracket; R26FLT
311	Gearbox Gasket; R26FLT	609	Open/Close Jaw Switch Cover; R26FLT
312	Cover Plate Gasket; R26FLT	610	Open/Close Jaw Switch Box Cover; R26FLT
313	Worm Screw Support; R26FLT	611	Screw
314	Screw M10X30	612	Screw
315	Washer	613	Screw
316	Gearbox Pulley; R26FLT	614	Washer
317	Gearbox Pulley Spacer; R26FLT	615	Open/Close Jaw Switch Box; R26FLT
318	Key 8X7	616	Control Pod Frame; R26FLT
319	Radial Bearing	617	Control Pod Wire Harness; R26FLT
320	Thrust Bearing	618	Control Pod Wire Harness Plug; R26FLT
321	Washer Φ 38X16.2X5	619	Terminal Block
322	Helical Gear; R26FLT	620	Foot Pedal Seal; R26FLT
323	Gearbox Front Cover; R26FLT	621	Screw
324	Worm Screw Threaded Section; R26FLT	622	Foot Pedal Mounting Bracket; R26FLT
325	Pin	623	Foot Pedal Switch; R26FLT
326	Gearbox Fill Plug; R26FLT	624	Foot Pedal Return Spring; R26FLT
327	Jaw Clamp Cylinder Cover; R26FLT	625	Screw
328	Oil Sight Glass; R26FLT	626	Screw Cap
329	Gearbox Oil Plug; R26FLT	627	Foot Pedal Pivot Shaft; R26FLT
330	Gearbox Oil Plug O-Ring; R26FLT	628	Screw Cap
331	Pully Cover Support Bracket; R26FLT	629	Foot Pedal Switch Bracket; R26FLT
332	O-Ring Φ 105X3.7	630	Foot Pedal Front Plate; R26FLT
		631	Screw
401	Hydraulic Motor; R26FLT	632	Screw
402	Hydraulic Pump Outer Housing; R26FLT	633	Screw
403	Screw	634	Foot Pedals; R26FLT
404	Screw	635	Connection Wire
405	Pump Drive Shaft; R26FLT	636	Screw
406	Hydraulic Pump Inner Housing; R26FLT	637	Washer
407	Hydraulic Pump; R26FLT	638	Screw Cap
408	Screw		
409	Hydraulic Pump Oil Strainer; R26FLT	701	Mounting Clamp
410	Screw	702	Pry Bar
411	Hydraulic Oil Tank; R26FLT	703	Large Pry Bar
412	Hydraulic Oil Dipstick; R26FLT	704	Lever Grease Gun; R26FLT
413	Manifold Connecting Screw; R26FLT	1001	Tool Head Assy; R26FLT
414	Manifold End Cap; R26FLT	1002	Left / Right Cylinder Assy; R26FLT
415	Manifold Block; R26FLT	1003	Up/Down Cylinder Assy; R26FLT
416	Screw	1008	Jaw Clamp Cylinder Seal Kit; R26FLT
417	Hydraulic Solenoid Conector; R26FLT	1009	Lifting/Sliding Cyl Seal kit; R26FLT
418	Hydraulic Solenoid; R26FLT	1010	Tire Ramp Assy; R26FLT
419	Screw	1011	Tool Head Lever Assy; R26FLT
420	Screw		
421	Pump to Manifold Block; R26FLT		
422	O-Ring		

Hydraulic Schematic



NUMBER	NAME	MODEL	QUANTITY
Y1	THICK HYDRAULIC CYLINDER	TG $\Phi 95 \times 200$	1
Y2	LONG HYDRAULIC CYLINDER	TG $\Phi 50 \times 1000$	1
Y3	SHORT HYDRAULIC CYLINDER	TG $\Phi 50 \times 380$	1
Y4	PRESSING METER	Y-40	1
1, 2	ASSEMBLY OF SQUARE BEND AND PIPE	GPU $\Phi 6-1-4UMPa1200$	2
3, 5, 6	STRAIGHTWAY FOUND PIPE JOINT	GPU $\Phi 6-1-4UMPa880$	3
4	STRAIGHTWAY FOUND PIPE JOINT	GPU $\Phi 6-1-4UMPa1520$	1
7	HYDRALIC CYLINDER TIE-IN	TG $\Phi 8 \times 140$	1
8	HYDRALIC CYLINDER TIE-IN	TG $\Phi 8 \times 105$	1
M2	MOTOR	Y-90L4	1
F1	HYDRAULIC LOCK	TGF-YS6	1
F2	ROTARY PIPE JOINT	TGF-HJ4	1
F3	CHECK VALVE	TGF-DC6C	1
F4	RELIEF VALVE	TGF-YL4-C	1
F5	HYDRAULIC FILTER	TGL-M18	1
DF1-DF3	HYDRAULIC SOLENOID VALVE	4WE6E61/CG24	3
C	GEAR PUMP	CBK-2.5	1
P	FEED OIL CIRCUIT		
T	BACK OIL CIRCUIT		



QS	Main switch	FU1-FU3	Fuse
QF1	Pump switch	VC	Rectifier
QF2	Motor switch	HL	LED
Km1	Motor clockwise contactor	YV1-YV6	Solenoid valve
Km2	Motor anticlockwise contactor	SB1 SB2	Crossing switch
Km3	Pump power switch	SQ1 SQ2	Bottom switch
M1	Pump motor	SQ3 SQ4	Microswitch
M2	Turning motor	SB	Power switch
TC	Transformer		