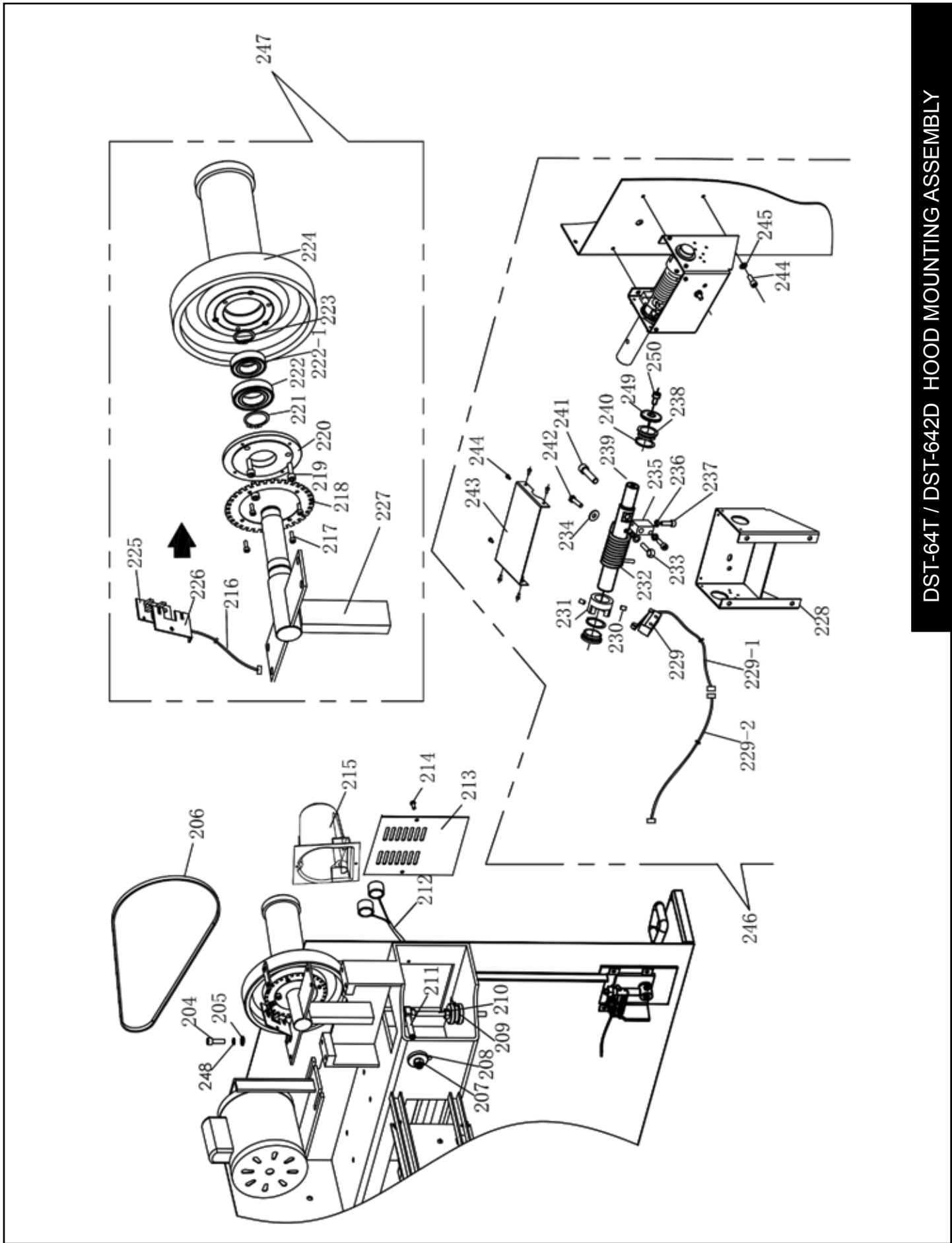
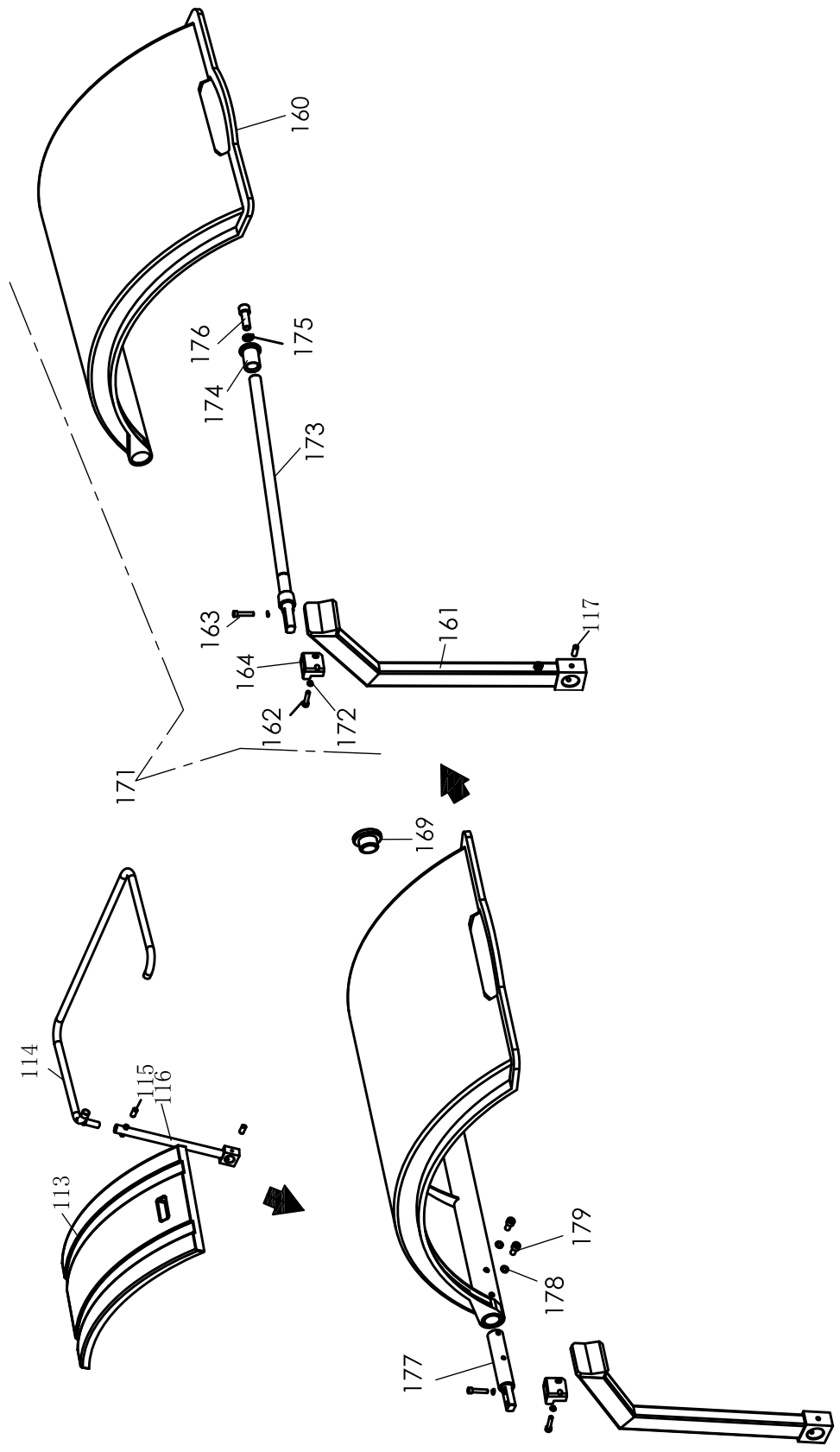
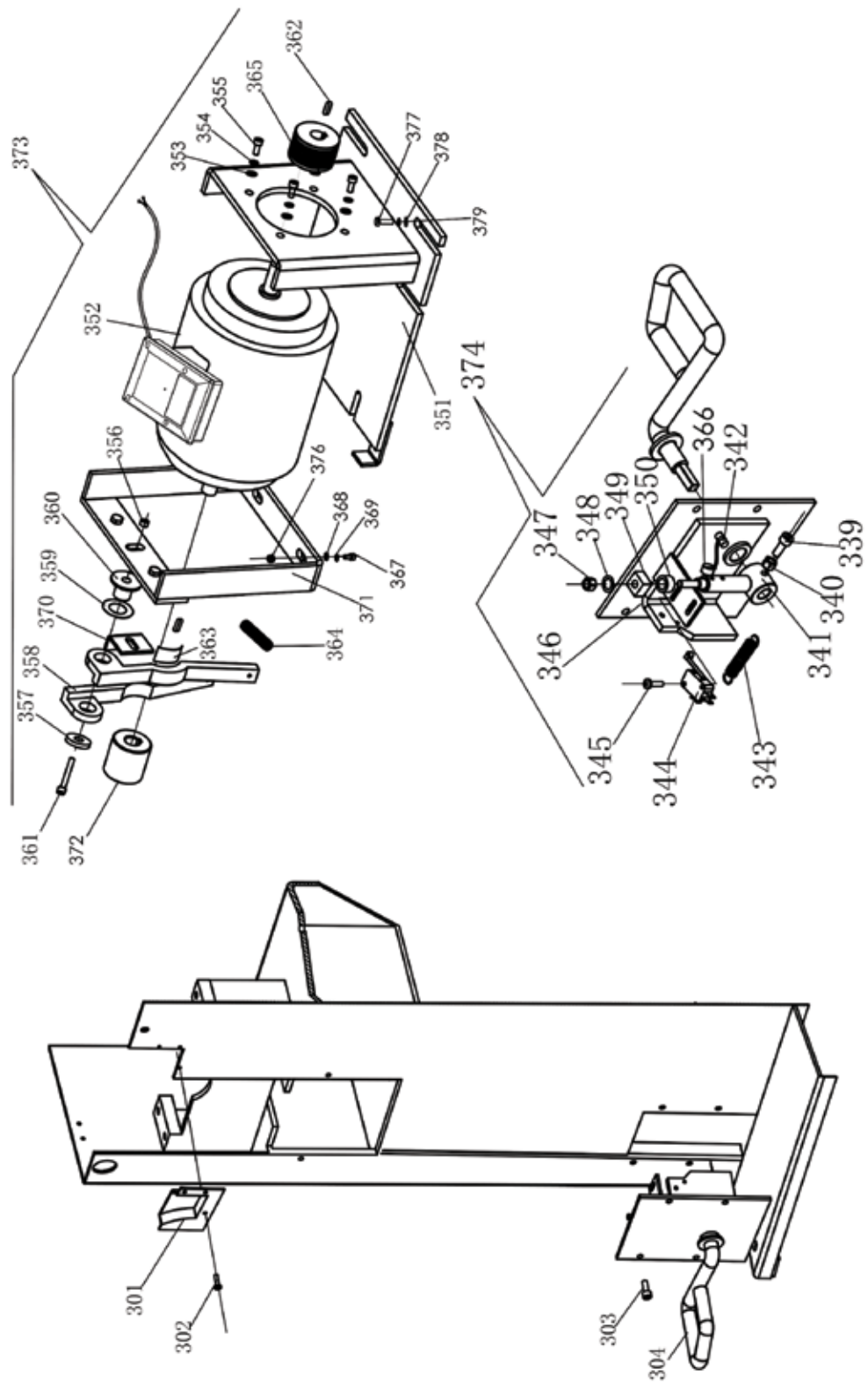


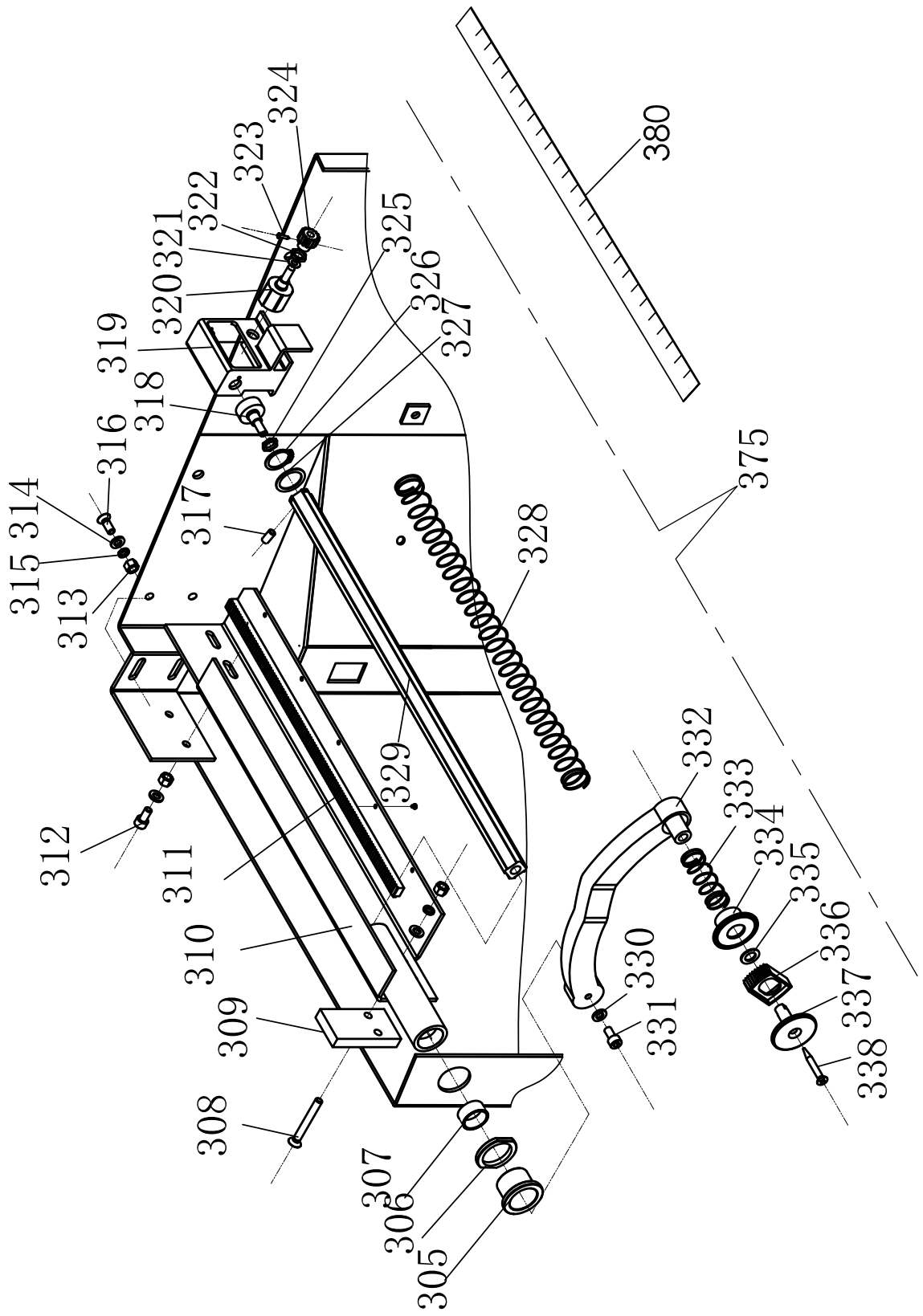
DST-64T CABINET

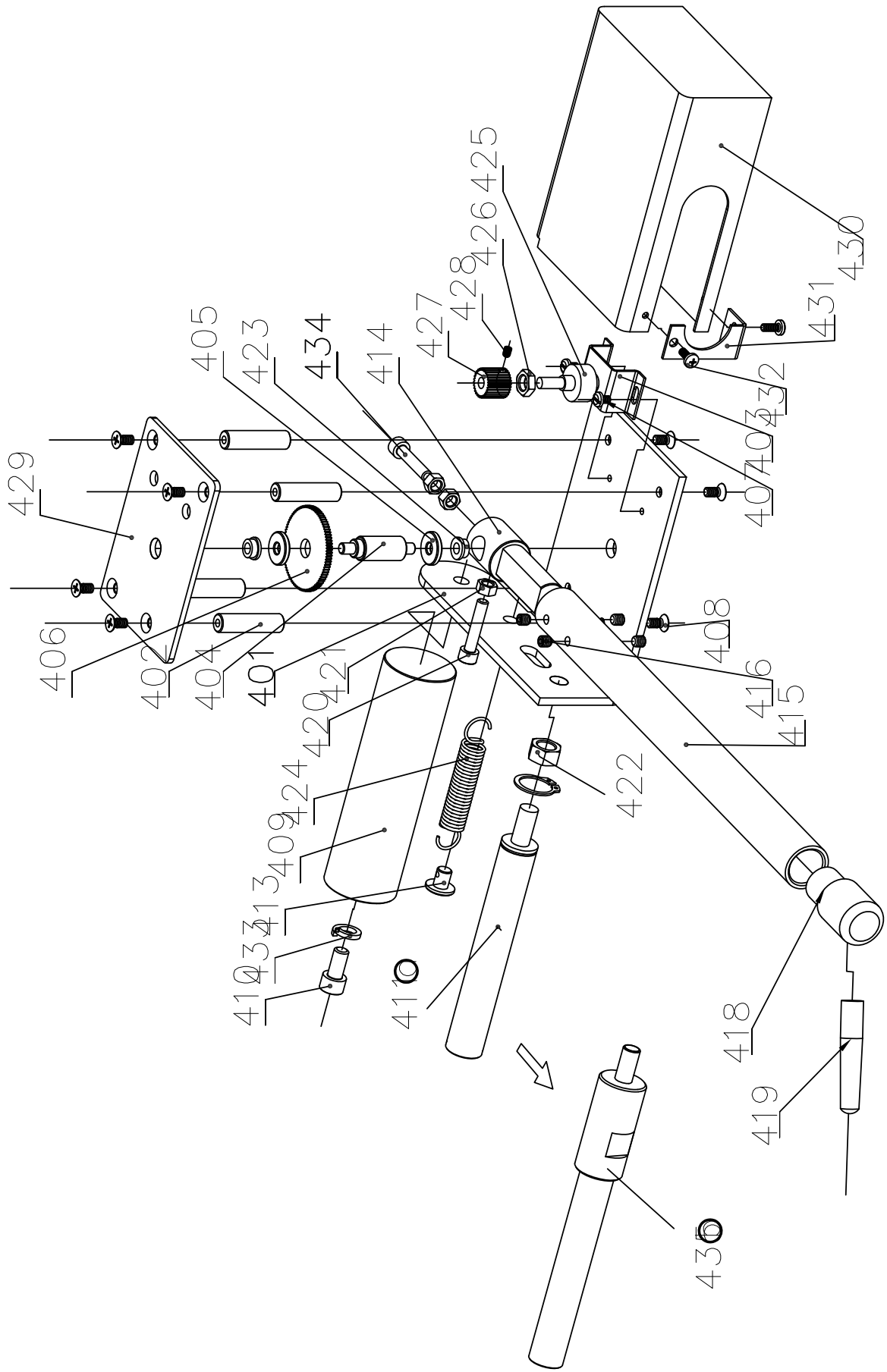


DST-64T / DST-642D HOOD MOUNTING ASSEMBLY

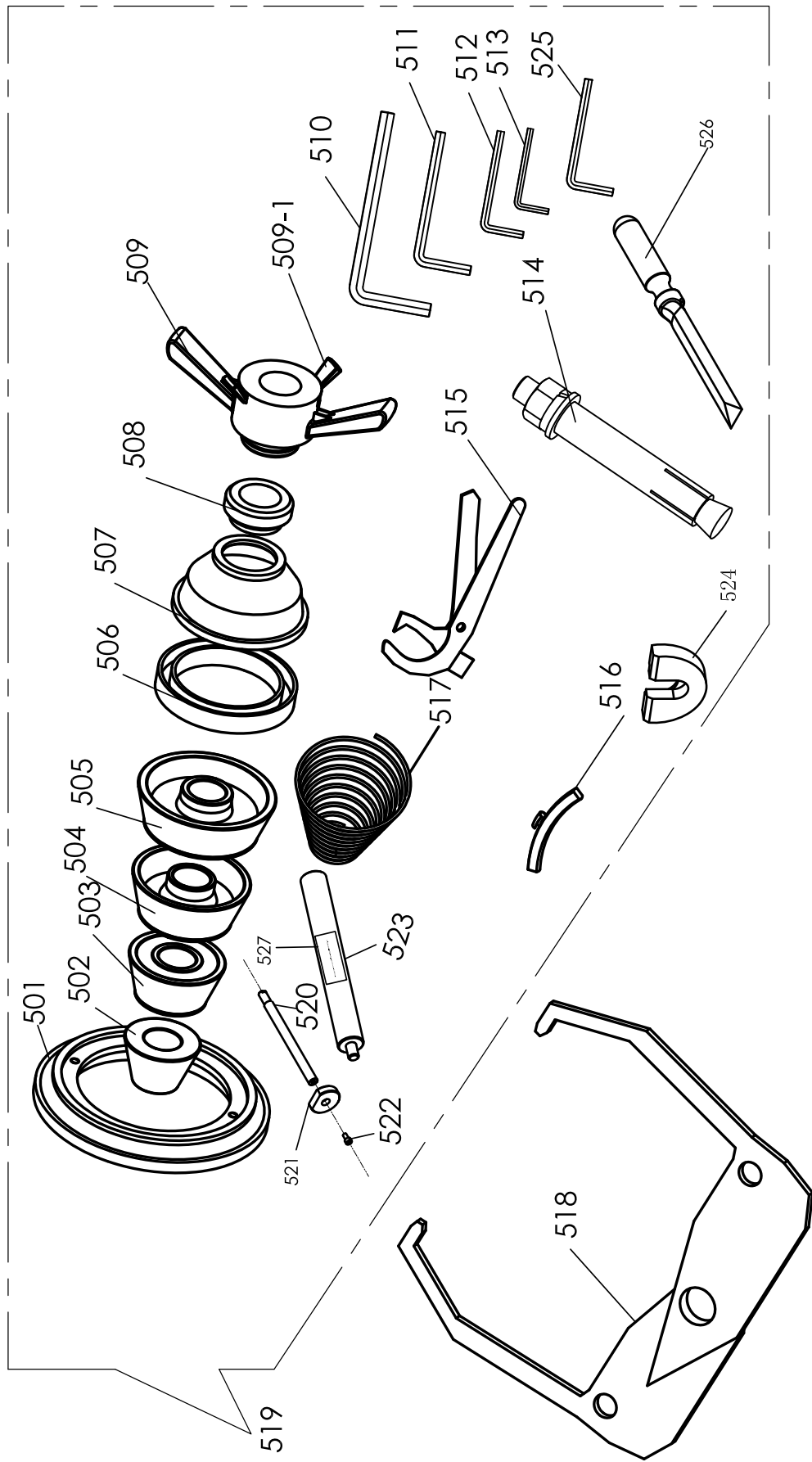


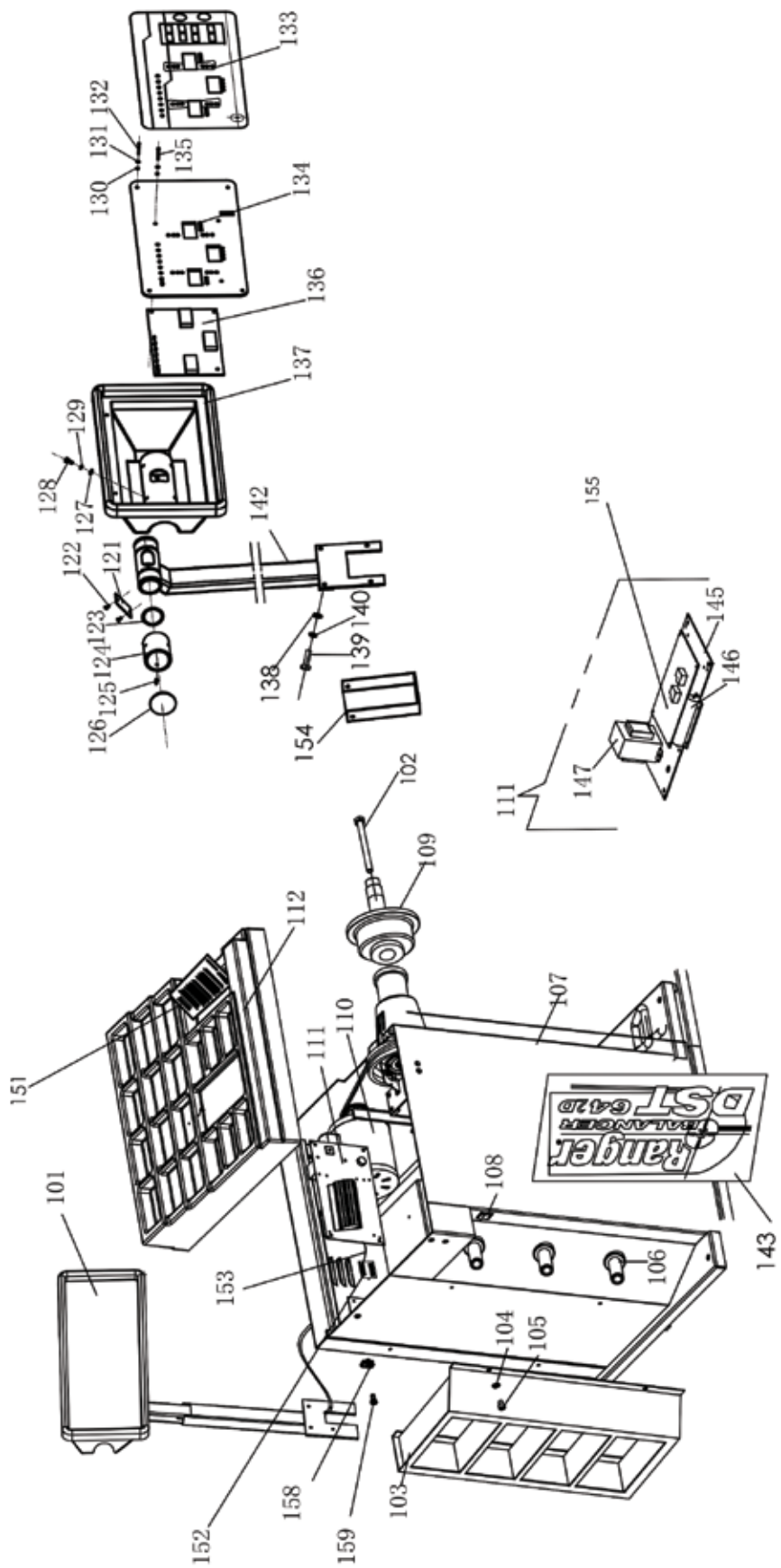




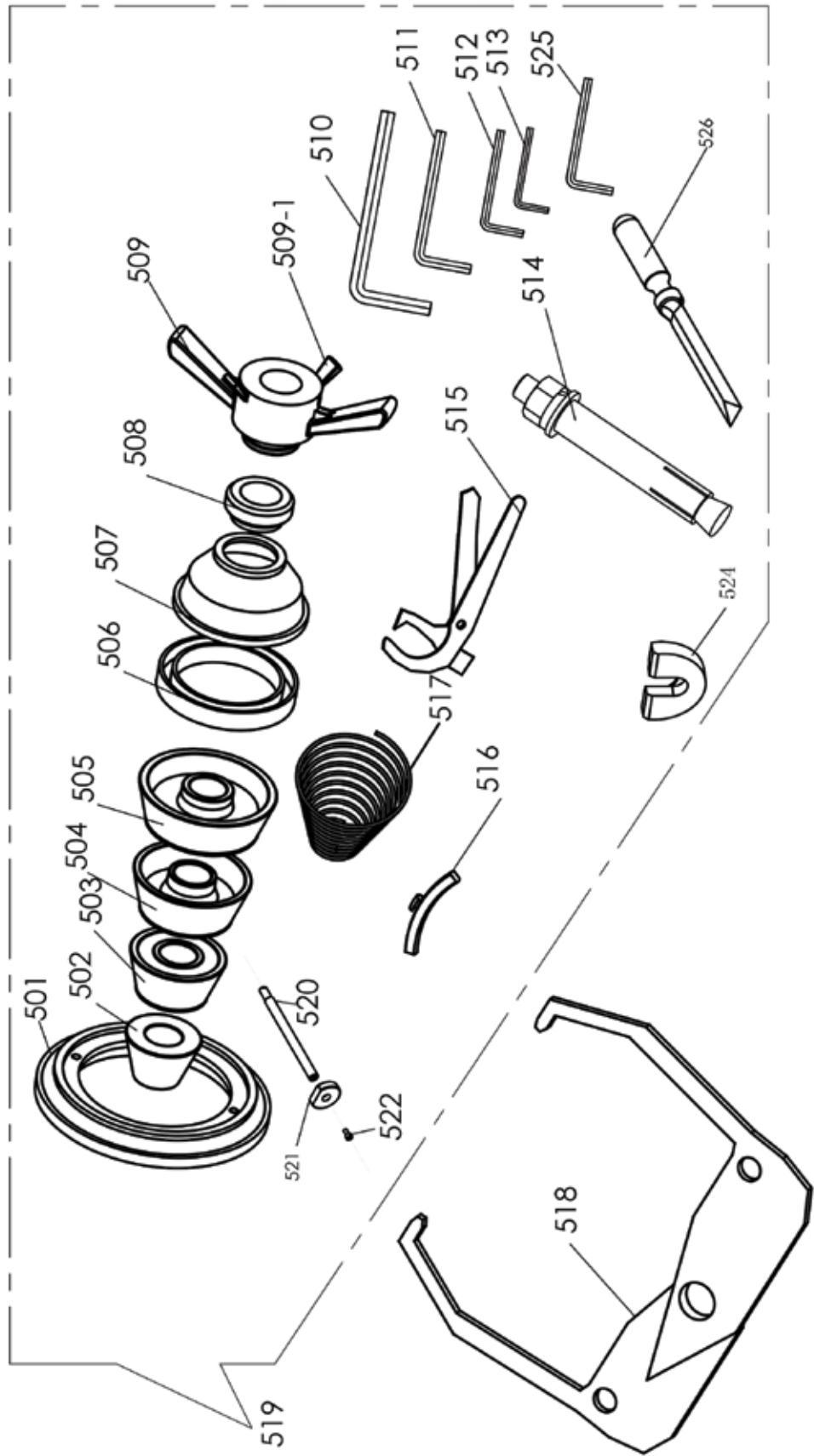


DST-64T TOUCH WAND ASSEMBLY









DRAWING #	DESCRIPTION	DRAWING #	DESCRIPTION
101	Display Board DST-64T	210	Vertical Shaft; DST-242D/64T
102	SHCS M6X20	211	Piezo Horizontal Shaft; DST-242D/64T
103	Side Storage Rack; DST242D/64T	212	Weight Indicator Light; DST-64T
104	Washer; 8mm flat	213	Chuck Guard; DST-242D/64T
105	SHCS M8X16	214	SSS ST4.8×16
106	Cone Hanger; DST-242D/64T/ZR650Z/RX3040	215	Thread Shaft Plastic Cover; DST-64T
107	Chassis Body; DST-64T	216	Piezo Sensors; DST-242D/64T
108	ON/OFF Switch; DST-64T	217	SHCS M4X12
109	Threaded Shaft/Spindle; DST-64T	218	tooth 64 ; DST-64T
110	Motor; DST-64T	219	SHCS M6X20
111	Power Board Assembly ; DST-64T	220	Bearing Cover
112	Weight Tray; DST-64T	221	Snap ring; 30mm
113	Hood; DST-242D/64T	222	Bearing 6006
114	Hood Mounting Bracket DST-242D/64T	222-1	Bearing 6005
115	SSS M8 x 25; DST-242D/64T	223	Snap ring; 25mm
116	Lower Hood Mount Support; DST-242D/64T	224	Spindle W/Position Board; DST-242D/64T
117	Hood Assembly Set Screw M8x25	225	Encoder Board; DST-64T
118	External Gauge Bracket Weldment	226	Encoder Board Mounting Brkt; DST-242D/64T
119	Bearing 2010; DST-64T	227	Deformation of Beams
120	Snap Ring 20X1	228	Hood Mounting Assembly Bracket; DST-64T
121	Mounting Hood Cover	229	Hood Switch; DST-242D/64T
122	Cross recessed pan head screw M4X12	229-1	Short Hood Switch Wires; DST-242D/64T
123	O-Ring 4.2 x 3.5; DST-64T	229-2	Long Hood Switch Wires; DST-64T
124	Display Assembly Sleeve; DST-64T	230	Hexagon socket set screw with flat point M8X12
125	Hexagon socket set screw with flat point M6x8	231	Hood Cam; DST-242D/64T
126	Display Assembly Plug; DST-64T	232	Hood Spring; DST-242D/64T
127	Washer; 6mm Flat	233	Adjustable Eye Bolt M8X1.25; DST-242D/64T
128	Washer; 6mm Split lock	234	Washer; 8mm
129	SHCS M6X16	235	Hood Cam Stop; DST-242D/64T
130	Washer; 3mm Flat	236	Nut M8
131	Washer; 3mm Split lock	237	SHCS M8X25
132	Cross recessed pan head screw M3X30	238	Hood Shaft Bushing; DST-242D/64T
133	Membrane Switch; DST-64T	239	Hood Rotating Shaft; DST-242D/64T
134	Display Board Cover; DST-64T	240	Snap ring; 38mm
135	Cross recessed pan head screw M3X40	241	SHCS M12X40
136	Computer/Display Board; DST-64T	242	HHB M8X30
137	Display Board Box; DST-64T	243	Hood Mounting Assembly Cover; DST-242D/64T
138	Washer; 6mm Flat	244	SHCS M8X20
139	SHCS M8X10	245	Washer; 8mm flat
140	Elastic Washer	246	Hood Mounting Assembly DST-64T
141	Stator	247	Spindle Assembly
142	Display Board Active Bracket; DST-64T	248	Elastic Washer
143	DECAL 1	301	Cabinet Plate; 64T
144	Power Board; DST-64T	302	Cross recessed pan head screw M4X16
145	Electrical Mounting Plate; DST-64T	303	SHCS M6X16
146	Resistor; DST-242D/64T	304	Brake Pedal; DST-64T
147	Transformer; DST-64T	305	Distance Arm Sleeve; DST-64T
148	SHCS M6X25	306	Distance Arm Sleeve Nut; DST-64T
149	Washer 6mm Split Lock	307	Bearing 2010; DST-64T
150	Washer	308	Cross recessed pan head screw M6X40
151	DECAL 2	309	Internal Pad 3; DST-64T
152	Patch board	310	Distance Arm Basement; DST-64T
153	Inner gauge wire	311	Gear Rail; DST-64T
201	SHCS M8X20	312	SHCS M6X16
202	Washer; 8mm split lock	313	Nut M10
203	Washer; 8mm	314	Washer; 6mm Flat
204	HHB M8X20	315	Washer; 6mm Split lock
205	Washer; 8mm flat	316	Cross recessed pan head screw M6X20
206	Motor Belt; DST-64T	317	Hexagon socket set screw with flat point M4x4
207	Nut M10	318	Wheel Diameter Potentiometer; DST-64T
208	Piezo Sensor Pad; DST-64T	319	Distance Arm Slide Block; DST-64T
209	Piezo Sensors; DST-64T	155	Power Board Assembly

<b>DRAWING #</b>	<b>DESCRIPTION</b>	<b>DRAWING #</b>	<b>DESCRIPTION</b>
320	Wheel Distance Potentiometer; DST-64T	402	External Support Column
321	Distance arm locking spacer	403	Potentiometer Bracket
322	Nut M8	404	Main Shaft
323	Cross recessed tapping screw ST2.9x9.5	405	Rotary Shaft Spacer
324	Distance Arm Gear; DST-64T	406	Touch Wand Gear; DST-64T
325	Lock Washer	407	Cross recessed pan head screw M4X6
326	Snap Ring 20X1	408	Cross recessed pan head screw M5X10
327	Distance Arm Rod Washer; DST-64T	409	Balancing Weight; DST-64T
328	Distance Arm Spring; DST-64T	410	SHCS M8X16
329	Distance Arm Rod; DST-64T	411	External Bracket Shaft
330	Washer; 6mm Flat	412	Snap Ring 20X1
331	SHCS M6X16	413	External Gauge Spring Hook; DST-64T
332	Distance Arm Head Connect Rod; DST-64T	414	External Gauge Connector
333	Distance Arm Head Spring; DST-64T	415	Touch Wand Rod; DST-64T
334	Distance Arm Head Bushing; DST-64T	416	Hexagon socket set screw with flat point M6x6
335	Washer; 12mm flat	417	External Gauge Basement; DST-64T
336	Distance Arm Head Weight Holder; DST-64T	418	Touch Wand Pointer Coupling; DST-64T
337	Distance Arm Head Pivot Bushing; DST-64T	419	Touch Wand Pointer; DST-64T
338	Distance Arm Head Screw; DST-64T	420	SHCS M6X30
339	SHCS M6X25	421	Nut M6
340	Nut M10	422	Nut M10
341	Brake Pedal Link Weldment	423	Touch Wand Bearing; DST-64T
342	Brake Metal Thread; DST-64T	424	Touch Wand Return Spring; DST-64T
343	Brake Pedal Return Spring; DST-64T	425	Touch Wand Potentiometer; DST-64T
344	Hood Switch; DST-242D/64T	426	Nut M8
345	Cross recessed pan head screw M3X20	427	Touch Wand Potentiometer Gear; DST-64T
346	Brake Bracket Kit; 64T	428	Hexagon socket set screw with flat point M4x5
347	Nut M10	429	Hood Mounting Assembly Upper Plate; DST-64T
348	Washer; 6mm Flat	430	Touch Wand Bracket Cover; DST-64T
349	Presser	431	Touch Wand Bracket Side Cover; DST-64T
350	Rubber Bushing; 64T	432	Cross recessed pan head screw M4X10
351	Motor Bracket; 242D/64T	433	Washer; 10mm split lock
352	Motor; DST-64T	434	SHCS M6X30
353	Washer; 6mm Flat	401-434	Touch Wand Assembly; DST-64T
354	Washer; 6mm Split lock	501	Spacer Ring; DST-242D/64T
355	SHCS M6X25	502	44.5-74.5mm CONE; DST-242D/64T 36mm
356	Nut M8	503	69-94mm CONE; DST-242D/64T 36mm
357	Brake Bracket Spacer; DST-64T	504	90-115mm CONE; DST-242D/64T 36mm
358	Right Brake Stop; DST-64T	505	110-134mm CONE; DST-242D/64T 36mm
359	Brake Shim; DST-64T	506	Quick Nut Cup Cover; DST-242D/64T
360	Brake Spacer Sleeve; DST-64T	507	Quick Nut Cup ; DST-242D/64T
361	HHB M8X60	508	Quick Nut Cover; DST-242D/64T
362	Motor Pully Key; 242D/64T	509	36mm Quick Nut; DST-242D/64T
363	Rubbing Sheet DST-64T	509-1	Quick Nut Release Cover; DST-242D/64T
364	Brake Spring; DST-6T	510	12mm Allen Wrench; DST242D/64T
365	Motor Pulley; DST-64T	511	6mm Allen Wrench; DST-242D/64T
366	Brake Pin	512	4mm Allen Wrench; DST242D/64T
367	SHCS M6X25	513	3mm Allen Wrench; DST-242D/64T
368	Washer; 6mm Split lock	514	Anchor Bolt; 3/8 x 3 1/2; DST-242D/64T
369	Washer; 6mm Flat	515	Weight Pliers
370	Left Brake Stop; DST-64T	516	Calibration Weight
371	Brake Bracket; DST-64T	517	36mm Spring; Mounting DST / ZR
372	Brake wheel	518	Wheel Calipers; All DST / ZR650
373	Motor Assembly; (110/220V 0.55KW)	519	Accessory Box; DST-64T
374	Brake Assembly; DST-64T	520	Extension Lever; DST-64T
375	Distance Arm Assembly; DST-64T	521	Distance Arm Head; DST-64T
376	NUT M6	522	SHCS M6X12
377	SHCS M8X25	523	External Gauge Calibration Kit; DST-64T
378	Washer	524	DIAMETER CALIBRATION TOOL; DST-64T
379	Elastic Washer	525	5mm Allen Wrench DST-64T
380	Distance Arm Sticker; DST-64T	526	WEIGHT SHOVEL
401	Hood Mounting Assembly Lower Plate; DST-64T	527	DECAL 3



**IMPORTANT NOTICE ABOUT LEAD WHEEL WEIGHTS**

New legislation now makes it illegal to sell, manufacture or install lead wheel weights in many states. Violators can be faced with substantial penalties of up to \$2,500 per day, per violation. Wheel weights made entirely of lead or zinc that end up on the roadway have high potential impacts to human health and the environment compared to steel wheel weights. Steel wheel weights are the preferred alternative due to their comparatively low toxicity and fewer environmental impacts from manufacturing. Lower environmental and human health impacts coupled with the high opportunity for steel wheel weights to be made from recycled material make steel wheel weights the best overall alternative.

Ranger offers a complete line of environmentally conscious steel weights for almost any application. Whether your wheel balancing needs are focused on passenger cars or trucks, Ranger has the right wheel weight for your needs, in stock and ready for immediate delivery.


**ENTER QTY. NEEDED FOR EACH ITEM. FAX ORDER TO 1-805-933-9160 OR CALL ORDER IN TO 1-800-253-2363 or 1-805-933-9970**

BILL TO:	
Name:	PO #
Company Name:	
Address:	
City:	
State:	Zip:
Phone:	
Email:	


SHIP TO: ( No P.O. Boxes )	
Name:	PO #
Company Name:	
Address:	
City:	
State:	Zip:
Phone:	
Email:	

Method of Payment:  Credit Card  Check Other \_\_\_\_\_ Preferred Shipment Method:  Rush 1-3 Days  Standard 5-10 Days  
**Fax order form to 1-805-933-9160 or call order in to 1-800-253-2363 or 1-805-933-9970. Email order form to sales@bendpak.com**

STEEL ADHESIVE WHEEL WEIGHTS (SELF-DISPENSING CARTON)					
SKU	DESCRIPTION	SALE PRICE EA.	BULK PRICE EA. (MIN. 10)	ORDER QTY.	TOTAL \$
5150220	Adhesive Steel Wheel Weights / Silver / ROLL (700 pcs. - 0.25 oz. - 1/2" Wide -11 lbs.)		\$46.75		
5150225	Adhesive Steel Wheel Weights / Black / ROLL (700 pcs. - 0.25 oz. - 1/2" Wide - 11 lbs.)		\$46.75		
5150230	Adhesive Steel Wheel Weights / Combo / ROLLS (1400 pcs. - 0.25 oz. - 1/2" Wide - 22 lbs.)		\$93.50		



CLIP-ON STEEL WHEEL WEIGHTS (STANDARD STEEL WHEELS)					
SKU	DESCRIPTION	SALE PRICE EA.	BULK PRICE EA. (MIN. 10)	ORDER QTY.	TOTAL \$
5150250	Clip-on Steel Wheel Weights Coated / Steel Wheels / 0.25 oz. ea. / Qty. 25 / Pfe / 1.21 lbs. / Box				
5150255	Clip-on Steel Wheel Weights Coated / Steel Wheels / .50 oz. ea. / Qty. 25 / Pfe / 1.61 lbs. / Box				
5150260	Clip-on Steel Wheel Weights Coated / Steel Wheels / .75 oz. ea. / Qty. 25 / Pfe / 2.01 lbs. / Box				
5150265	Clip-on Steel Wheel Weights Coated / Steel Wheels / 1 oz. ea. / Qty. 25 / Pfe / 1.61 lbs. / Box				
5150270	Clip-on Steel Wheel Weights Coated / Steel Wheels / 1.25 oz. ea. / Qty. 25 / Pfe / 2.01 lbs. / Box				
5150275	Clip-on Steel Wheel Weights Coated / Steel Wheels / 1.5 oz. ea. / Qty. 25 / Pfe / 2.41 lbs. / Box				
5150280	Clip-on Steel Wheel Weights Coated / Steel Wheels / 1.75 oz. ea. / Qty. 25 / Pfe / 2.82 lbs. / Box				
5150285	Clip-on Steel Wheel Weights Coated / Steel Wheels / 2 oz. ea. / Qty. 25 / Pfe / 3.22 lbs. / Box				
5150290	Clip-on Steel Wheel Weights Coated / Steel Wheels / 2.25 oz. ea. / Qty. 25 / Pfe / 3.62 lbs. / Box				
5150295	Clip-on Steel Wheel Weights Coated / Steel Wheels 2.5 oz. ea. / Qty. 25 / Pfe / 4.02 lbs. / Box				
5150305	Clip-on Steel Wheel Weights Coated / Steel Wheels 2.75 oz. ea. / Qty. 25 / Pfe / 4.43 lbs. / Box				
5150310	Clip-on Steel Wheel Weights Coated / Steel Wheels 3 oz. ea. / Qty. 25 / Pfe / 4.83 lbs. / Box				



**GRAND TOTAL**

**NOTICE:** After we are in receipt of your order, one of our courteous sale team members will call you to confirm your order and confirm payment method. Please make sure to write legibly and include your full name, email and phone number so that we may best assist you. Your order will be shipped 5-10 business days after we have received your order (this includes a completed order form and full payment). Shipping charges will be detailed on your final receipt.