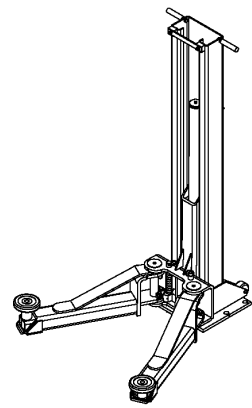
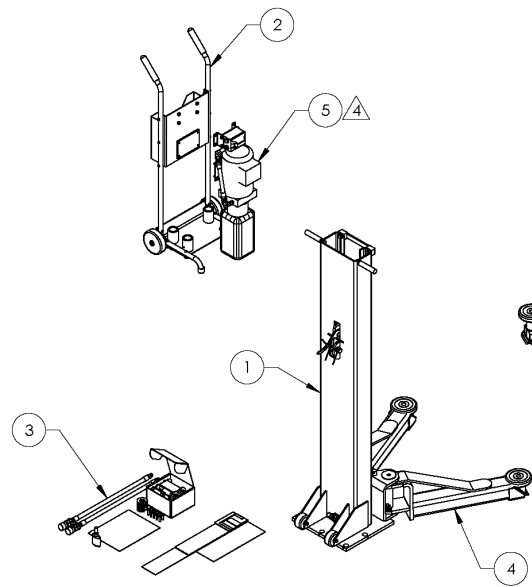


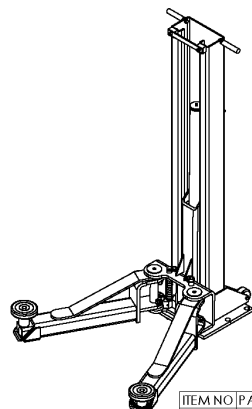
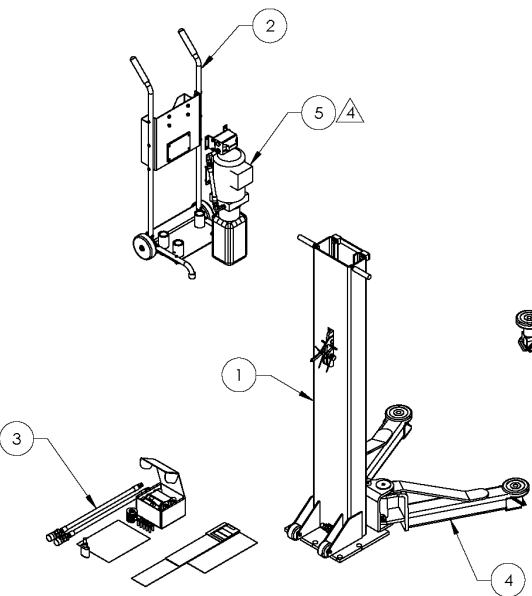
Parts Drawings



ITEM NO	PART NUMBER	DESCRIPTION	QTY	REV
1	5215935	M6K POST ASSEMBLY	2	D
2	5215936	MAX JAX POWER UNIT STAND ASSEMBLY	1	B
3	5250293	M6K PARTS BOX	1	E
4	5215938	MAXJAX ARM ASSEMBLY	4	A
5	REF	M6K POWER UNIT, 220V	1	-
--	5906033	MAXJAX BRANDING LABEL	4	-
--	5906034	MAXJAX SAFETY LABEL	1	-
--	5906035	MAXJAX SAFETY LOCKS WARNING LABEL	2	-
--	5906005	MAX CAPACITY NTRL 6K LABEL, ENGLISH-FRENCH	1	-
--	5906036	SERIAL TAG F, MAX JAX	1	-
--	5905377	NOTICE LABEL, ALI/WLSIA01	1	-
--	5905109	WARNING ALI/WL 101	1	-
--	5905654	LABEL: ALI/ALCTV-2017 GOLD LABEL, CAN-US; MET LABS	1	-
--	5906044	AMERICAN OWNED LABEL	1	-

DO NOT SCALE DRAWING		NAME	DATE	<b>EP BendPak.</b> 1645 LEMONWOOD DR. SANTA PAULA, CA 93060	
DRAWN	CA	06/23/2021			
CHECKED	OR	06/23/2021			
DIMENSIONS ARE IN MM		THIRD ANGLE PROJECTION		TITLE: M6K PRODUCTION LIFT, 220V	
				SIZE DWG. NO.	REV
				A 5260653	A
PROPRIETARY AND CONFIDENTIAL THE INFORMATION CONTAINED IN THIS DRAWING IS THE SOLE PROPERTY OF BENDPAK INC. ANY REPRODUCTION IN PART OR AS A WHOLE WITHOUT THE WRITTEN PERMISSION OF BENDPAK INC. IS PROHIBITED.				SCALE: 1:22	SHEET 1 OF 3

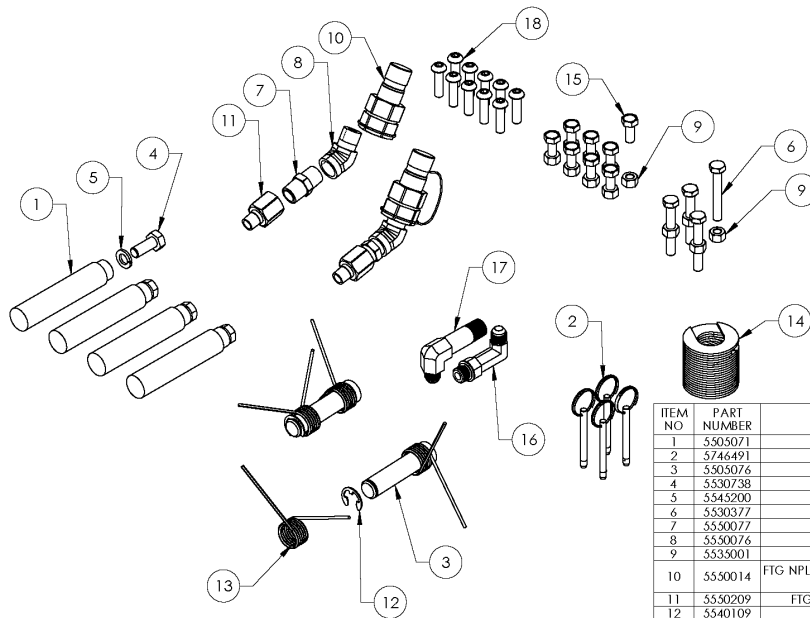
4. POWER UNIT REFERENCE ON PURCHASE ORDER



ITEM NO	PART NUMBER	DESCRIPTION	QTY	REV
1	5215935	M6K POST ASSEMBLY	2	D
2	5215936	MAX JAX POWER UNIT STAND ASSEMBLY	1	B
3	5250293	M6K PARTS BOX	1	E
4	5215938	MAXJAX ARM ASSEMBLY	4	A
5	REF	M6K POWER UNIT, 110V	1	-
--	5906033	MAXJAX BRANDING LABEL	4	-
--	5906034	MAXJAX SAFETY LABEL	1	-
--	5906035	MAXJAX SAFETY LOCKS WARNING LABEL	2	-
--	5906005	MAX CAPACITY NTRL 6K LABEL, ENGLISH-FRENCH	1	-
--	5906036	SERIAL TAG F, MAX JAX	1	-
--	5905377	NOTICE LABEL, ALI/WLSIA01	1	-
--	5905109	WARNING ALI/WL 101	1	-
--	5905654	LABEL: ALI/ALCTV-2017 GOLD LABEL, CAN-US; MET LABS	1	-
--	5906044	AMERICAN OWNED LABEL	1	-

DO NOT SCALE DRAWING		NAME	DATE	<b>EP BendPak.</b> 1645 LEMONWOOD DR. SANTA PAULA, CA 93060	
DRAWN	OR	05/29/2020			
CHECKED	OR	06/23/2021			
DIMENSIONS ARE IN MM		THIRD ANGLE PROJECTION		TITLE: M6K PRODUCTION LIFT, 110V	
				SIZE DWG. NO.	REV
				A 5260614	J
PROPRIETARY AND CONFIDENTIAL THE INFORMATION CONTAINED IN THIS DRAWING IS THE SOLE PROPERTY OF BENDPAK INC. ANY REPRODUCTION IN PART OR AS A WHOLE WITHOUT THE WRITTEN PERMISSION OF BENDPAK INC. IS PROHIBITED.				SCALE: 1:22	SHEET 1 OF 3

4. POWER UNIT REFERENCE ON PURCHASE ORDER



ITEM NO	PART NUMBER	DESCRIPTION	QTY	REV
1	5505071	M6K SAFETY PIN ASSEMBLY	4	B
2	5746491	MAXJAX LIFT HEAD RELEASE PIN	4	A
3	5505076	MAXJAX SAFETY CLEVIS PIN	2	A
4	5530738	HHB M10 x 1.5 x 25	4	-
5	5545200	WASHER M10 x Ø18 SL	4	-
6	5530377	HHB M8 x 1.25 x 55	4	-
7	5550077	FTG -06 NPTF x -06 NPTF, HEX NIPPLE	2	-
8	5550076	FTG 45° ELB -06 NPTF x -06 NPTF	2	-
9	5535001	NUT M8 x 1.25 NL	12	-
10	5550014	FTG NPL -06 NPTF x 3/8 QUICK-CONNECTOR COUPLER MALE, NON SPILL DESIGN	2	-
11	5550209	FTG -04 NPTF x -06 NPTF, STRAIGHT EXPANDER	2	-
12	5540109	E RING Ø16mm OD DIN 6799 0160	2	-
13	5540075	R.H.L. 2.5 WIRE DIA., Ø20.5 x 75 LG	4	-
14	5545535	C WASHER SHIM FOR LIFTS	21	-
15	5530304	HHB M8 x 1.25 x 20	8	-
16	5550074	FTG 90° ELB 3/8" JIC MALE x 3/8" ORB MALE, LONG	1	-
17	5550170	FTG 90° ELB 3/8" JIC MALE x 3/8" NPTF MALE, LONG	1	-
18	5530412	BHSK M8 x 1.25 x 30 CT10.9	10	-

DO NOT SCALE DRAWING

DRAWN OR 06/19/2020  
CHECKED OR 02/15/2021

DIMENSIONS ARE IN MM

THIRD ANGLE PROJECTION

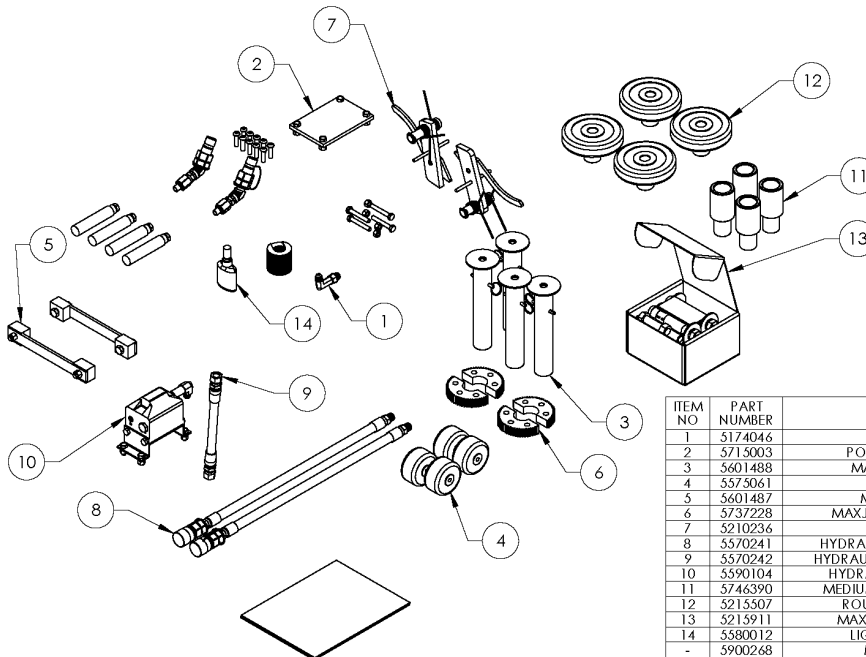
PROPRIETARY AND CONFIDENTIAL  
THE INFORMATION CONTAINED IN THIS DRAWING IS THE SOLE PROPERTY OF BENDPAK, INC. ANY REPRODUCTION IN PART OR IN WHOLE WITHOUT THE WRITTEN PERMISSION OF BENDPAK, INC. IS PROHIBITED.

NAME DATE  
BendPak  
1645 LEMONWOOD DR.  
SANTA PAULA, CA 93060

TITLE: M6K PARTS BAG

SIZE DWG. NO. REV  
A 5174046 D

SCALE: 1:4 SHEET 1 OF 1



ITEM NO	PART NUMBER	DESCRIPTION	QTY	REV
1	5174046	M6K PARTS BAG	1	D
2	5715003	POWER UNIT VIBRATION DAMPENER	1	B
3	5601488	MAXJAX LIFT HEAD PIN WELDMENT	4	B
4	5575061	M6K POST WHEEL	4	-
5	5601487	MAXJAX POST STRAP ASSEMBLY	2	A
6	5737228	MAXJAX BOLT ON ARM RESTRAINT GEAR	4	A
7	5210236	MAXJAX SAFETY WELDMENT	2	B
8	5570241	HYDRAULIC HOSE ASSEMBLY Ø10 x 4520mm	2	A
9	5570242	HYDRAULIC HOSE ASSEMBLY Ø10 x 295mm DS	1	C
10	5590104	HYDRAULIC FLOW DIVIDER CAST IRON: ST	1	-
11	5746390	MEDIUM LIFT PAD EXTENSION Ø35 x 113mm	4	E
12	5215507	ROUND LIFT PAD ADAPTER ASSEMBLY	4	G
13	5215911	MAXJAX STANDARD ANCHOR BOLT KIT	1	-
14	5580012	LIQUID PTFE THREAD SEALANT 50ml	1	-
-	5900268	MAXJAX OPERATION MANUAL	1	-
-	5900304	MAXJAX INSTALLATION MANUAL	1	-

DO NOT SCALE DRAWING

DRAWN OR 06/01/2020  
CHECKED OR 02/25/2021

DIMENSIONS ARE IN MM

THIRD ANGLE PROJECTION

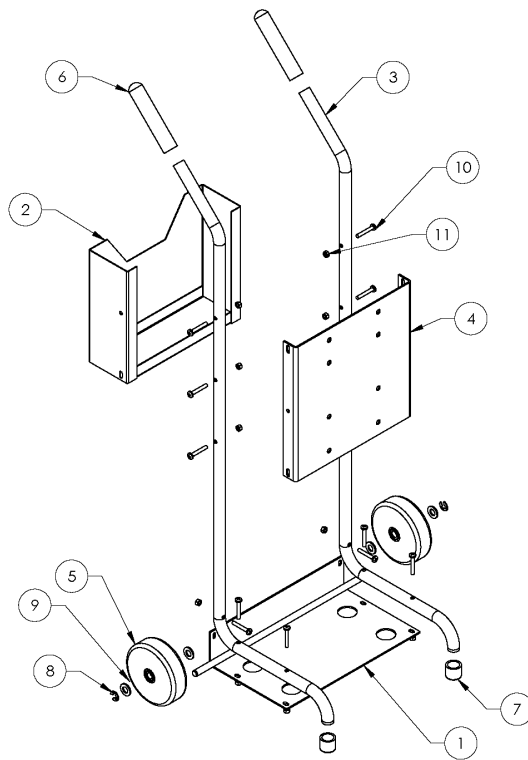
PROPRIETARY AND CONFIDENTIAL  
THE INFORMATION CONTAINED IN THIS DRAWING IS THE SOLE PROPERTY OF BENDPAK, INC. ANY REPRODUCTION IN PART OR IN WHOLE WITHOUT THE WRITTEN PERMISSION OF BENDPAK, INC. IS PROHIBITED.

NAME DATE  
BendPak  
1645 LEMONWOOD DR.  
SANTA PAULA, CA 93060

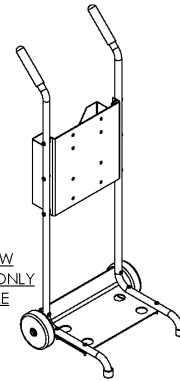
TITLE: M6K PARTS BOX

SIZE DWG. NO. REV  
A 5250293 F

SCALE: 1:25 SHEET 1 OF 1



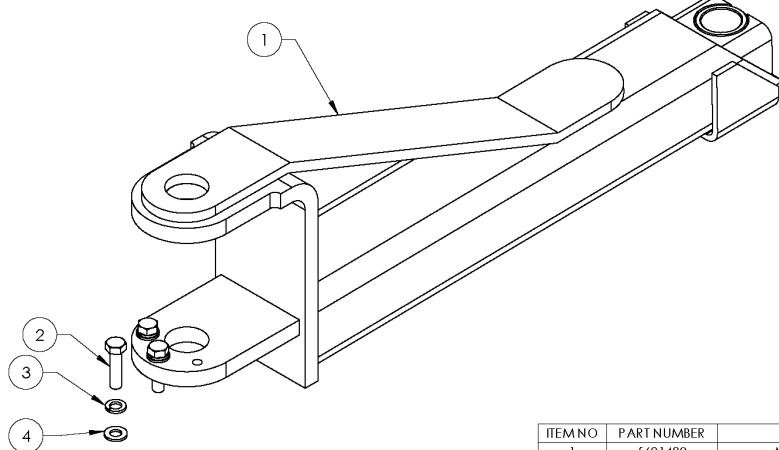
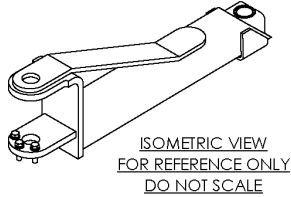
ISOMETRIC VIEW  
FOR REFERENCE ONLY  
DO NOT SCALE



ITEM NO	PART NUMBER	DESCRIPTION	QTY	REV
1	5601535	MAX JAX BOTTOM PLATE WELDMENT, STAND	1	A
2	5601474	M6K HOSE STORAGE BOX WELDMENT	1	B
3	5755171	MAX JAX STAND HANDLE	2	B
4	5737162	MAX JAX STAND SUPPORT PLATE	1	A
5	5215970	MAX JAX HAND CART WHEEL ASSEMBLY	2	-
6	5715041	MAX JAX VINYL GRIP, Ø22 I.D.	2	A
7	5716056	MAX JAX VINYL CAP, Ø22 I.D.	2	B
8	5540113	E RING Ø1/2" OD TRUARC. 5133-50	2	-
9	5545141	WASHER M12 x 24 FLAT CL 10.9	4	-
10	5530378	PHPS M6 x 1.0 x 40mm	12	-
11	5533357	NUT M6 x 1.0 NL	12	-

DO NOT SCALE DRAWING	NAME	DATE	<b>BendPak.</b>	
	DRAWN	OR	05/27/2020	1645 LEMONWOOD DR. SANTA PAULA, CA 93060
	CHECKED	OR		
DIMENSIONS ARE IN MM	THIRD ANGLE PROJECTION		TITLE: MAX JAX POWER UNIT STAND ASSEMBLY	
<p>PROPRIETARY AND CONFIDENTIAL THE INFORMATION CONTAINED IN THIS DRAWING IS THE SOLE PROPERTY OF BENDPAK INC. ANY REPRODUCTION IN PART OR AS A WHOLE WITHOUT THE WRITTEN PERMISSION OF BENDPAK INC. IS PROHIBITED.</p>	SIZE		DWG. NO.	REV
	A		5215936	B
	SCALE: 1:8		SHEET 1 OF 1	



ITEM NO	PART NUMBER	DESCRIPTION	QTY	REV
1	5601489	MAX JAX ARM WELDMENT	1	A
2	5530302	HHB M10 x 1.5 x 40 FULLY THREAD	3	-
3	5545200	WASHER M10 x Ø18 SL	3	-
4	5545341	WASHER M10 x Ø20 FLAT	3	-

DO NOT SCALE DRAWING	NAME	DATE	<b>BendPak.</b>	
	DRAWN	OR	05/21/2020	1645 LEMONWOOD DR. SANTA PAULA, CA 93060
	CHECKED	OR	07/20/2020	
DIMENSIONS ARE IN MM	THIRD ANGLE PROJECTION		TITLE: MAX JAX ARM ASSEMBLY	
<p>PROPRIETARY AND CONFIDENTIAL THE INFORMATION CONTAINED IN THIS DRAWING IS THE SOLE PROPERTY OF BENDPAK INC. ANY REPRODUCTION IN PART OR AS A WHOLE WITHOUT THE WRITTEN PERMISSION OF BENDPAK INC. IS PROHIBITED.</p>	SIZE		DWG. NO.	REV
	A		5215938	A
	SCALE: 1:4		SHEET 1 OF 2	